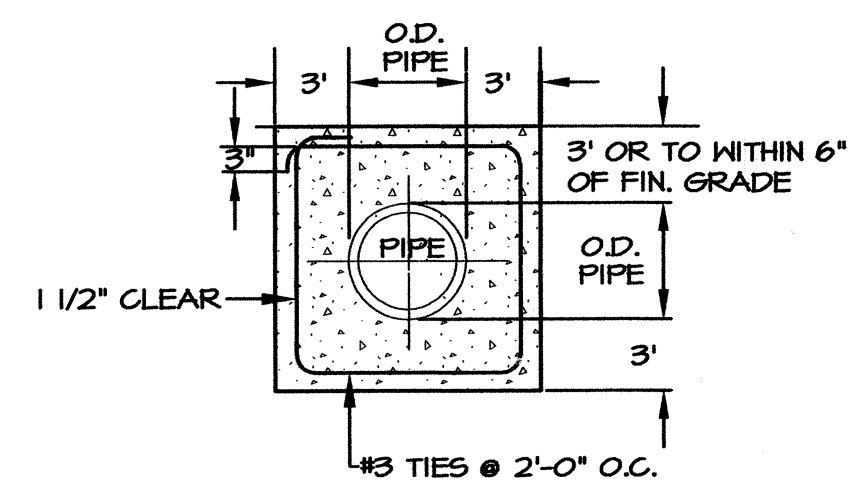
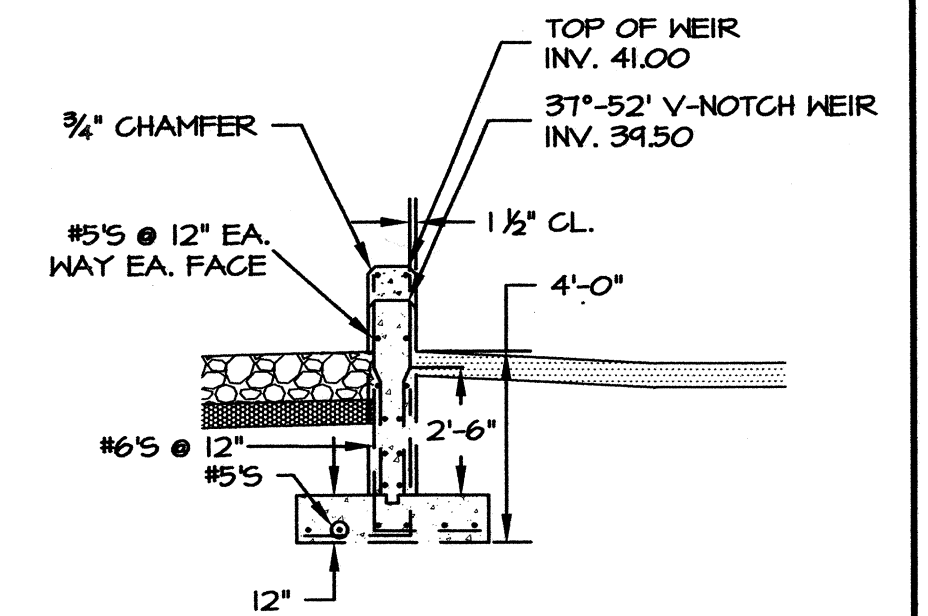
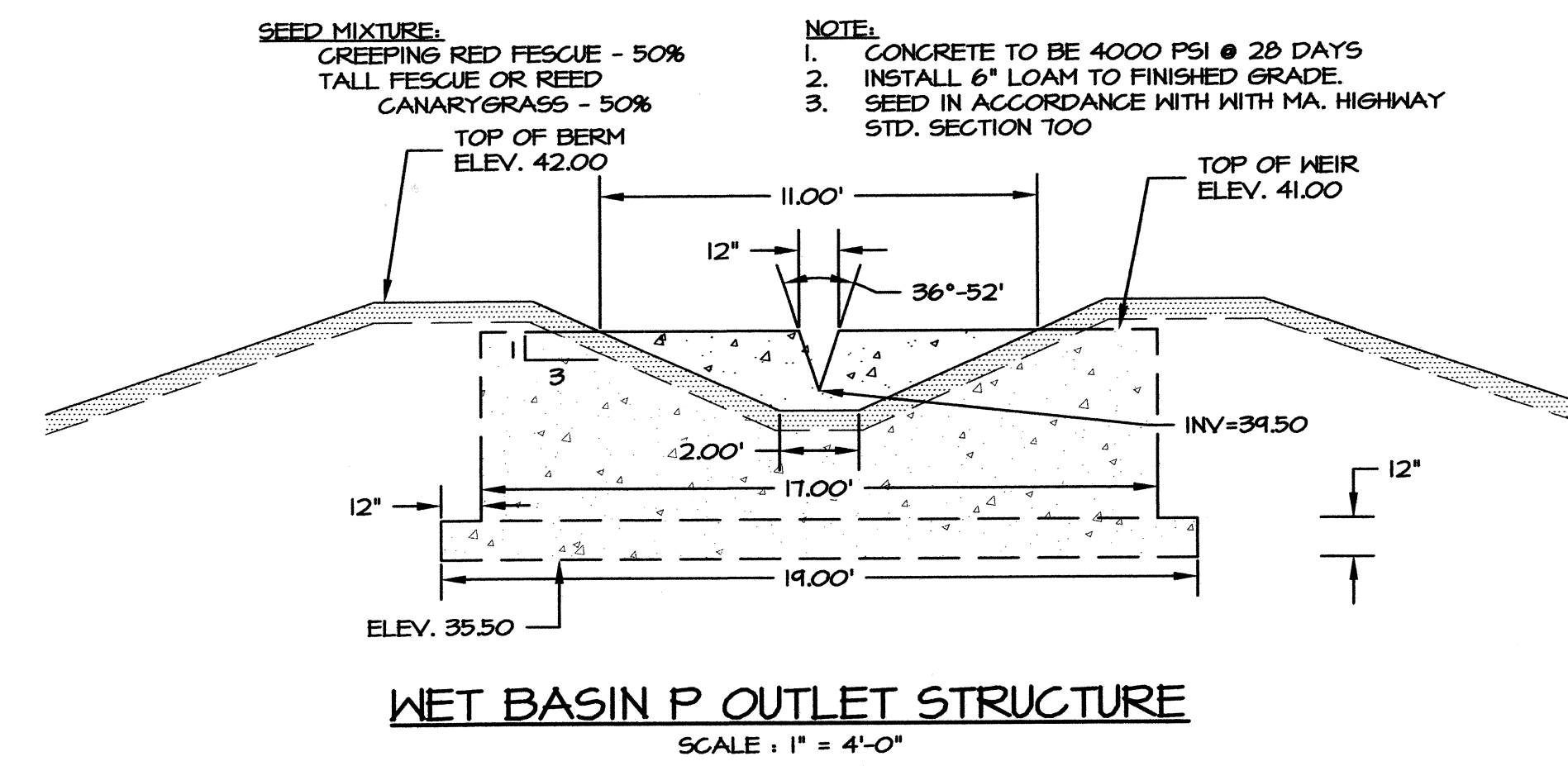


DETAIL - SEDIMENT FOREBAY (TYPICAL)
NOT TO SCALE

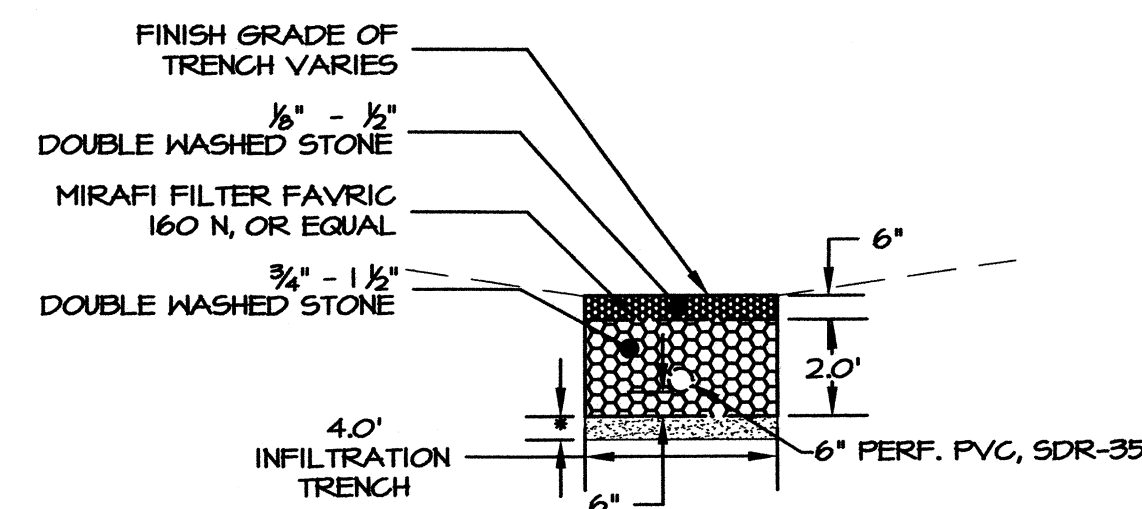
SEDIMENT FOREBAY ELEVATIONS AND DIMENSIONS

FOREBAY	BOTTOM ELEVATION	WEIR ELEVATION	BERM ELEVATION	A (FEET)	B (FEET)	CONG. FLOOR AREA (S.F.)
A-1	52.00	52.00	53.00	3.0	6.0	280 (35'x8')
A-2	51.25	52.00	52.25	3.0	6.0	160 (20'x8')
A-3	51.25	52.00	52.25	3.0	6.0	46 (12'x8')
B-1	51.25	52.00	52.25	6.5	8.0	300 (30'x10')
D-1	54.00	54.75	55.00	2.5	4.0	100 (10'x10')
D-2	54.00	54.75	55.00	4.5	6.0	300 (25'x12')
D-3	54.00	54.75	55.00	4.5	6.0	150 (15'x10')
F-1	53.50	54.00	54.50	2.0	5.0	200 (20'x10')
F-2	53.50	53.85	54.00	2.0	3.0	462 (32'x15')
F-3	53.25	53.25	53.50	6.5	8.0	688 (435'x20')
H-1	56.50	56.75	57.00	8.5	10.0	300 (25'x12')
K-1	58.00	58.75	59.00	4.5	6.0	614 (442'x15')
N-1	49.50	46.00	46.50	7.0	10.0	250 (50'x5')
P-1	43.00	43.50	44.00	2.0	11.0	



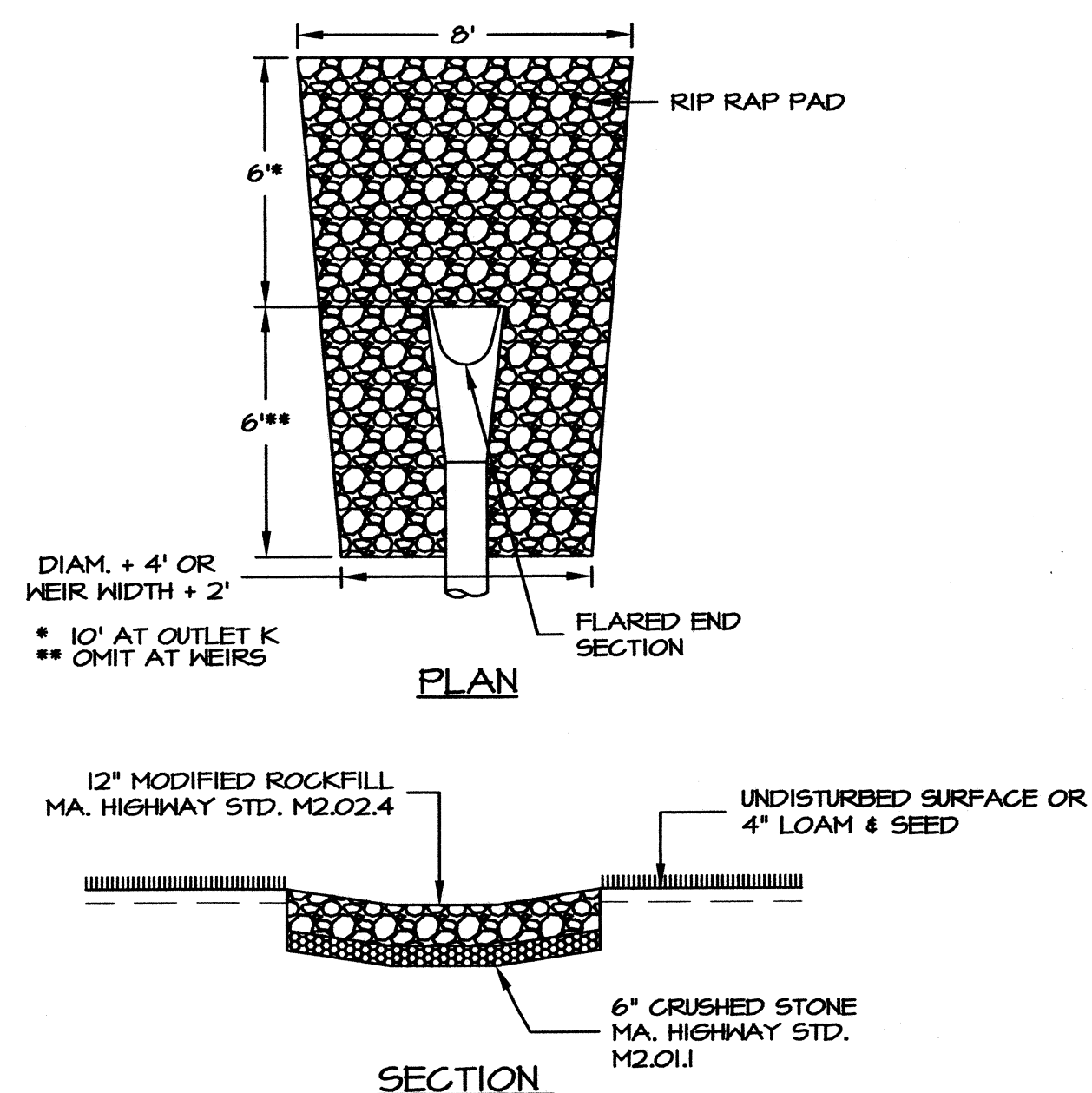
- NOTES:
1. ALL CONCRETE TO BE 3,000 PSI, 28 DAYS.
2. CONCRETE WIDTH 12"

ANTI-SEEP COLLAR
NOT TO SCALE



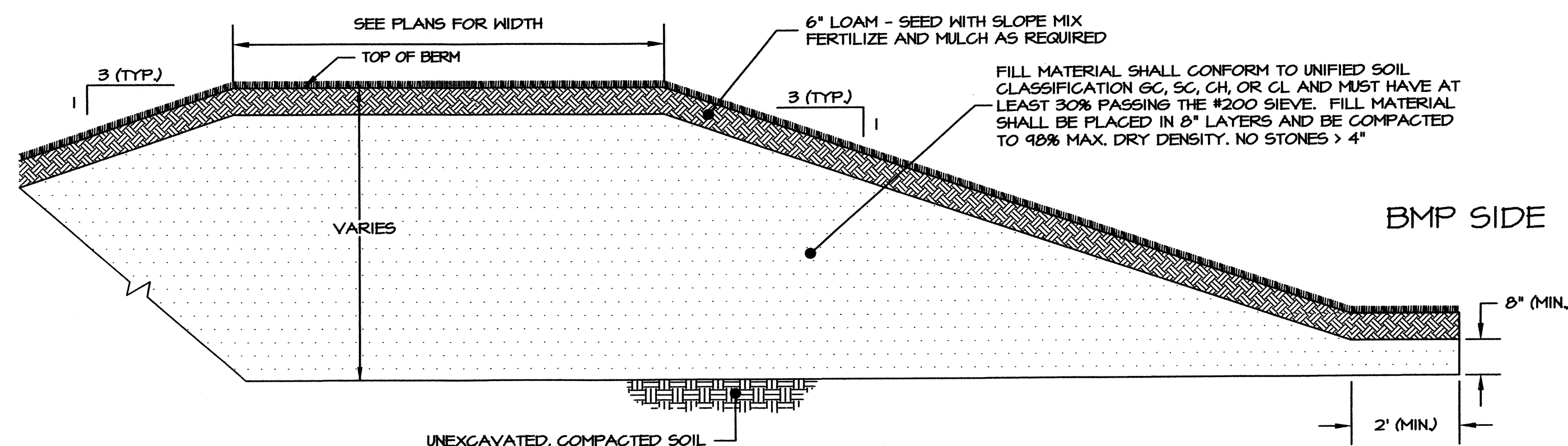
* - REMOVE ALL TOPSOIL AND SUBSOIL WITHIN LIMITS OF INFILTRATION TRENCH. REPLACE WITH BANK RUN GRAVEL CONTAINING LITTLE TO NO FINES TO WITHIN 30' OF FINISHED GRADE.
SEE GRADING PLAN FOR LOCATION AND FINISH GRADING ELEVATIONS FOR INFILTRATION TRENCH.

DETAIL - INFILTRATION TRENCH M&Q
SCALE 1"=4'



NOTE: USE SIMILAR OUTLET PROTECTION AT OUTLETS TO FOREBAYS

**DETAILS - STONE PIPE END
OUTLET PROTECTION**
SCALE 1" = 4'



STRIP ALL TOPSOIL, SUBSOIL AND UNSUITABLE MATERIAL, TREE ROOTS AND STUMPS AND ANY OTHER UNSUITABLE SOIL IN THE AREA OF THE EMBANKMENT AND 3 FEET BEYOND HORIZONTALLY IN ALL DIRECTIONS, WHERE POSSIBLE. STRIP MATERIAL VERTICALLY 3" MINIMUM INTO THE C HORIZON.

DETAIL - TYPICAL BMP EMBANKMENT
SCALE 1" = 2'

	<p>DETAIL NO. 2 GREENBRIER CONDOMINIUMS PREPARED FOR RI SEEKONK HOLDINGS, LLC FALL RIVER AVENUE & COLE STREET SEEKONK, MASSACHUSETTS</p>	
	<p>CAPUTO AND WICK LTD.</p> <p>1150 PAWTUCKET AVE. RUMFORD, R.I. 02916 401-434-8880</p>	<p>DATE August 31, 2009 REV. APRIL 2010 SHEET 18 OF 21</p>