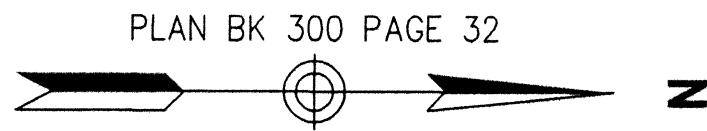
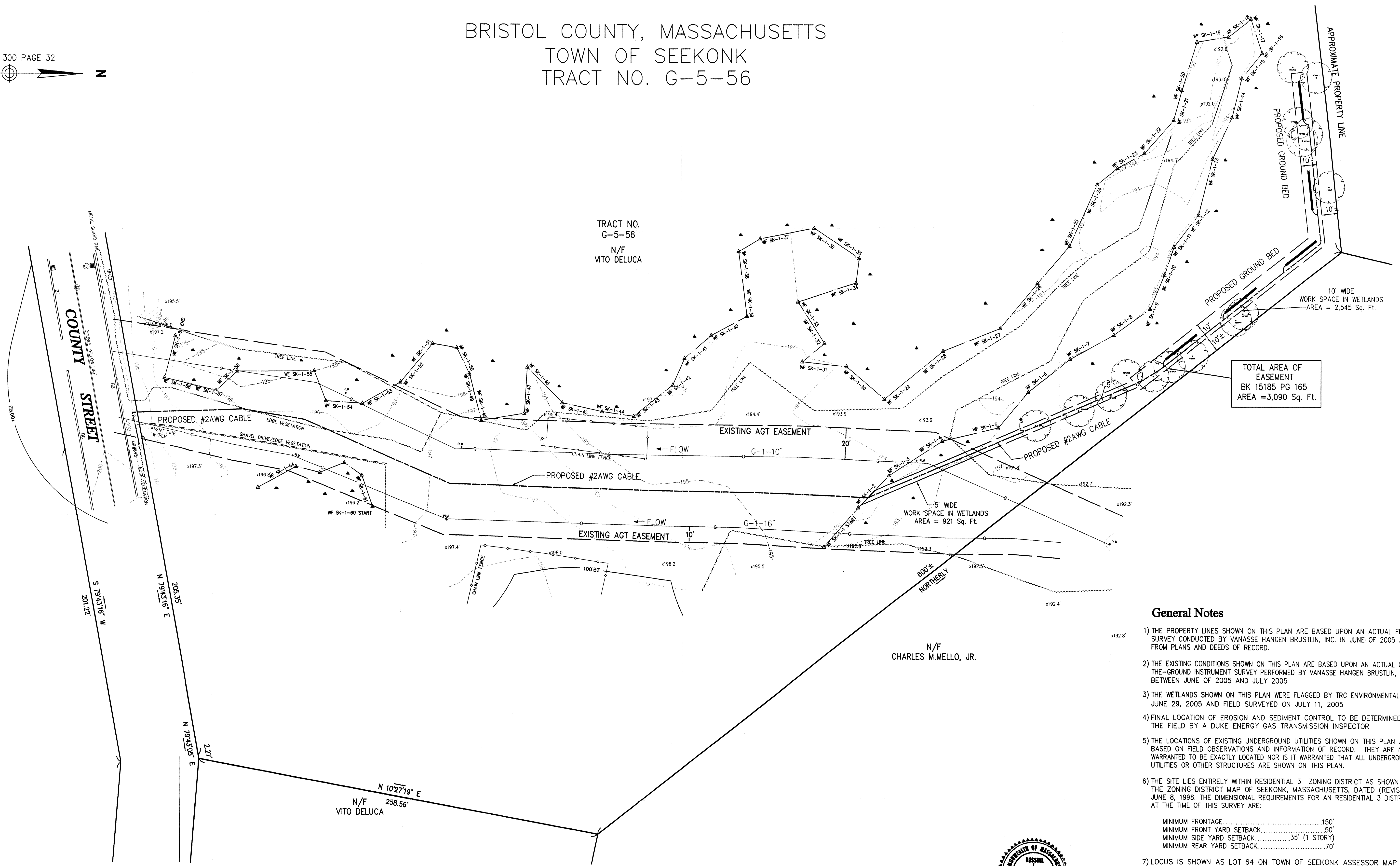


BRISTOL COUNTY, MASSACHUSETTS
TOWN OF SEEKONK
TRACT NO. G-5-56



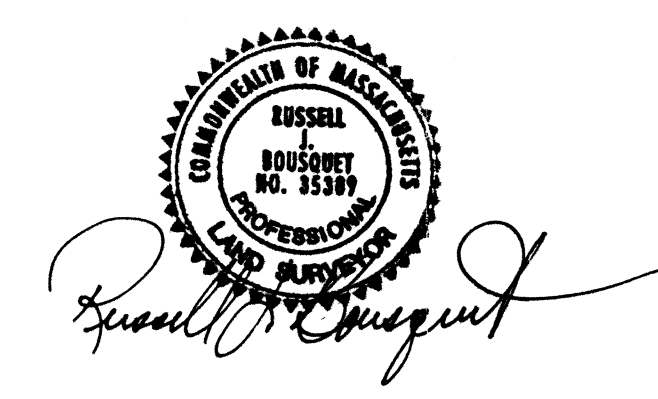
TRACT NO.
G-5-56
N/F
VITO DELUCA



N/F
CHARLES M. MELLO, JR.

General Notes

- 1) THE PROPERTY LINES SHOWN ON THIS PLAN ARE BASED UPON AN ACTUAL FIELD SURVEY CONDUCTED BY VANASSE HANGEN BRUSTLIN, INC. IN JUNE OF 2005 AND FROM PLANS AND DEEDS OF RECORD.
- 2) THE EXISTING CONDITIONS SHOWN ON THIS PLAN ARE BASED UPON AN ACTUAL ON-THE-GROUND INSTRUMENT SURVEY PERFORMED BY VANASSE HANGEN BRUSTLIN, INC. BETWEEN JUNE OF 2005 AND JULY 2005.
- 3) THE WETLANDS SHOWN ON THIS PLAN WERE FLAGGED BY TRC ENVIRONMENTAL ON JUNE 29, 2005 AND FIELD SURVEYED ON JULY 11, 2005.
- 4) FINAL LOCATION OF EROSION AND SEDIMENT CONTROL TO BE DETERMINED IN THE FIELD BY A DUKE ENERGY GAS TRANSMISSION INSPECTOR.
- 5) THE LOCATIONS OF EXISTING UNDERGROUND UTILITIES SHOWN ON THIS PLAN ARE BASED ON FIELD OBSERVATIONS AND INFORMATION OF RECORD. THEY ARE NOT WARRANTED TO BE EXACTLY LOCATED NOR IS IT WARRANTED THAT ALL UNDERGROUND UTILITIES OR OTHER STRUCTURES ARE SHOWN ON THIS PLAN.
- 6) THE SITE LIES ENTIRELY WITHIN RESIDENTIAL 3 ZONING DISTRICT AS SHOWN ON THE ZONING DISTRICT MAP OF SEEKONK, MASSACHUSETTS, DATED (REVISED) JUNE 8, 1998. THE DIMENSIONAL REQUIREMENTS FOR A RESIDENTIAL 3 DISTRICT AT THE TIME OF THIS SURVEY ARE:
 MINIMUM FRONTAGE.....150'
 MINIMUM FRONT YARD SETBACK.....50'
 MINIMUM SIDE YARD SETBACK.....35' (1 STORY)
 MINIMUM REAR YARD SETBACK.....70'
- 7) LOCUS IS SHOWN AS LOT 64 ON TOWN OF SEEKONK ASSESSOR MAP 10.
- 8) TOTAL AREA OF ADDITIONAL EASEMENT IS 3,090.S.F.
- 9) DATUMS ARE BASED ON AN ASSUMED ELEVATION



CRITICAL INFRASTRUCTURE NON-INTERNET PUBLIC

SUBDIVISION SARAH COURT 8/16/1989				DRAFTING DESIGNER				ALGONQUIN GAS TRANSMISSION LLC CATHODIC PROTECTION EASEMENT PLAN OF LAND N/F VITO DELUCA 402 COUNTY STREET SEEKONK MA.			
SUBDIVISION CHARLES M. MELLO 8/02/1988				ENGINEERING APPROVALS				LOC. SEEKONK, MA.			
BRIARWOOD ESTATE 11/1968				DRAWN BY: BID CONSTRUCTION				5400 Wertheimer Ct. Houston, TX 77056-5310 713/627-5400			
RIGHT OF WAY CROSSING PROPERTY OF CHARLES M. MELLO 2/27/1967				DRAFTING SUPERVISOR SLT 9/19/05				YEAR: 2005 CWO SCALE: 1"=30' DWG. C-263 A REV. 0			
L 4604 B				DESIGN ENGINEER							
REV DSN CK				DESIGN MANAGER							
DESCRIPTION				INITIALS DATE INITIALS DATE							

69-579

PREPARED BY
VHB Vanasse Hangen Brustlin, Inc.
101 Walnut St., P.O. Box 9151
Watertown, MA 02272 617 924 1770



AUTO CAD RELEASE 2005
 PREPARED BY VANASSE HANGEN BRUSTLIN, INC.
 WATERTOWN, MASS.
 \\Mweld\vd\08000.25\cont\p\delucamisc\08000.25-Ex.dwg