

LEGEND

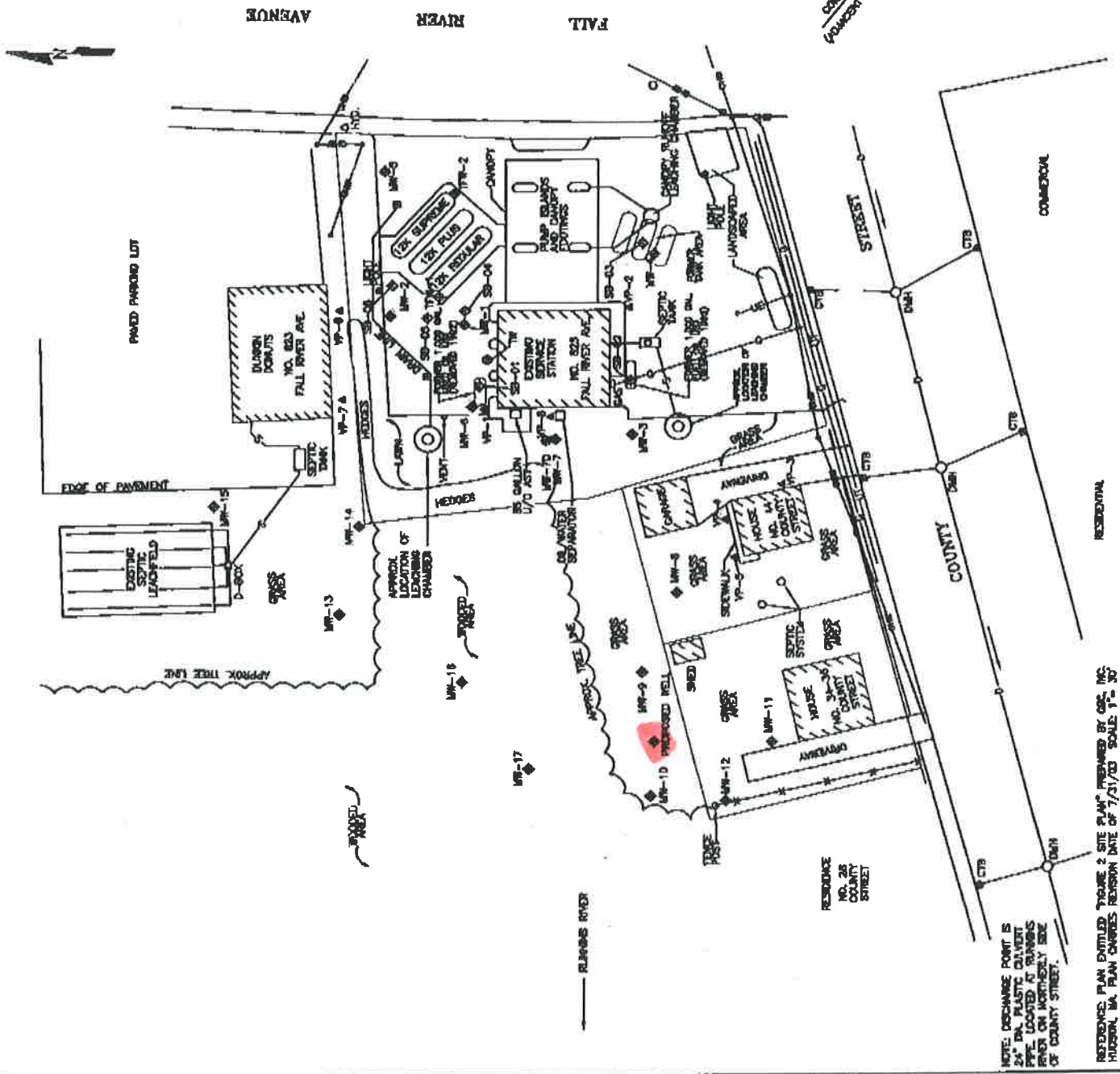
- ◆ APPROXIMATE LOCATION OF A/C WORKS
- ▲ SOL. VAPOR MONITORING POINT
- ◆ MONITORING WELL
- ◆ DEEP MONITORING WELL
- ◆ TANK FIELD WELL
- MANHOLE
- CATCH BASIN
- PROPERTY BOUNDARY
- TF @ TEMPORARY WELL LOCATION
- U/O USED OIL
- F/O FUEL OIL
- LIST UNDERGROUND STORAGE TANK
- UTILITY POLE
- FIRE HYDRANT
- OHV-DRENCH WIRES
- O— GAS LINE
- W— WATER LINE
- UT— UNDERGROUND TELEPHONE

NOTE: LOCATION OF UTILITIES ARE APPROXIMATE

SCALE



69-580



NOTE: DISCHARGE POINT IS IN PLANNED COUNTY STREET LOCATED TO REMAIN OPEN ON INTERSECTING SIDE OF COUNTY STREET.

REFERENCE: PLAN ENTITLED 'TRUCK 2 SITE PLAN' PREPARED BY GEC, INC. HISSON, MA. PLAN CHANGES REVISION DATE OF 7/31/03 SCALE 1"=30'