

4 Turkey Hill Road
Newtown, CT 06470
Tel (203) 270-4300
Fax (203) 426-9968



Fred Hurley,
Director

TOWN OF NEWTOWN
WATER AND SEWER AUTHORITY

Richard B. Zang,
Chairman
Marianne Brown
Louis Carbone
Richard Conte
Alan Shepard
Eugene Vetrano
Carl Zencey

The Newtown Water & Sewer Authority held its regular meeting on April 12, 2012 at the Waste Water Treatment Plant, 24 Commerce Road, Newtown, CT. Marianne Brown called the meeting to order at 7:00pm.

Present: Marianne Brown, Alan Shepard, Carl Zencey

Absent: Lou Carbone, Dick Zang, Gene Vetrano

Also Present: Director of Public Works Fred Hurley, Julio Segarra and Jason O'Brien of United Water Environmental Services.

Public Participation: NONE

Approval of the Minutes: Tabled due to a lack of quorum

OLD BUSINESS

Gallons processed vs gallons billed study/Flow monitoring – The members have the table and can manipulate the data from the meters. It has been very dry and should be the baseline moving forward. The meters will be kept in the same location until there is a rain event.

Capital Needs – SCADA - The proposal has still not been received **New Well** – There has been no activity

Fairfield Hills Sewer Service Area – Alan Shepard handed out the map of the Fairfield Hills Sewer system.

Renewable Energy Project – OPEL will start actual construction next week.

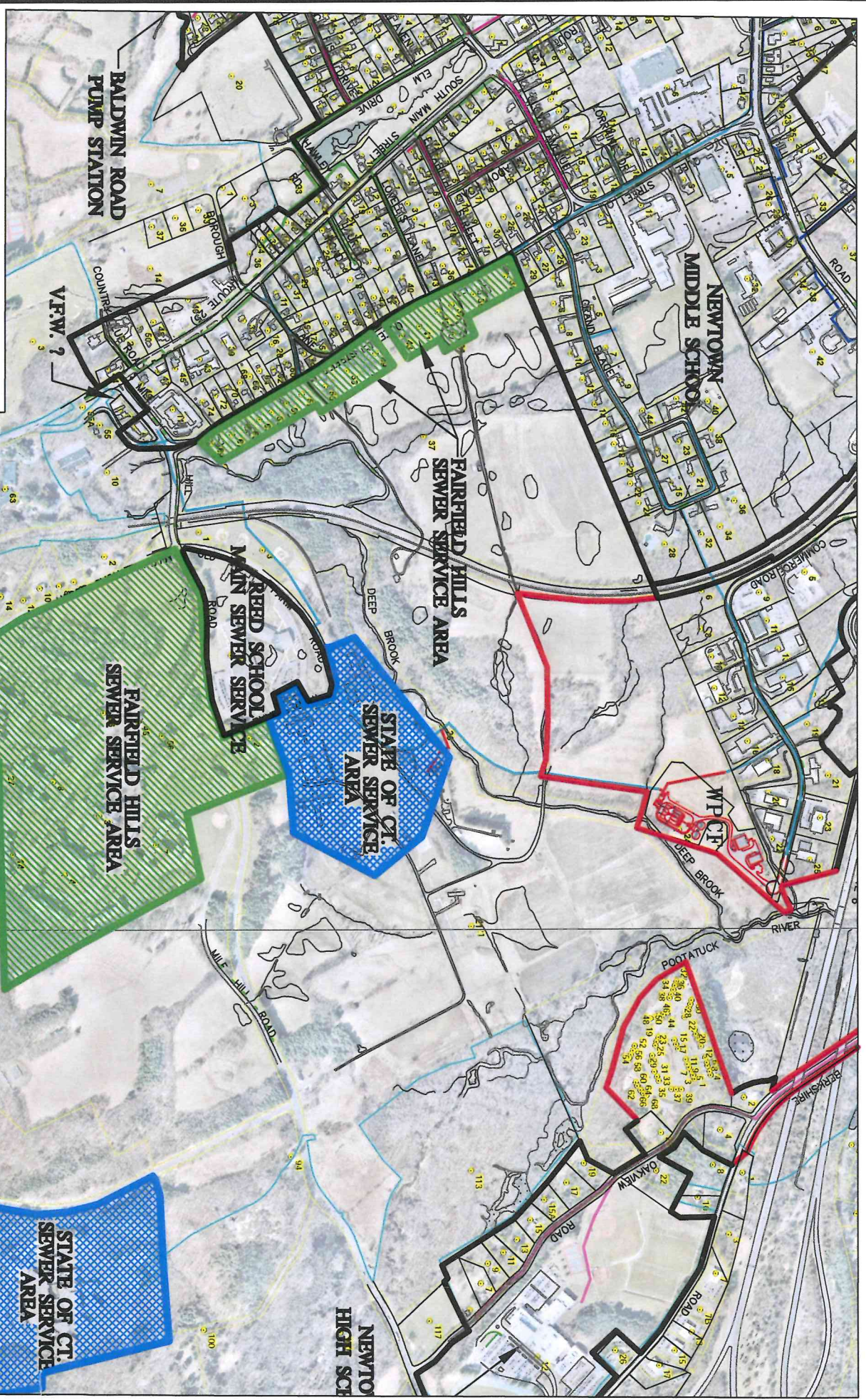
NEW BUSINESS

Report by United Water Environmental Services – The plant ran well.

Report by Public Director – Reported within the meeting.

Having no further business, the meeting was adjourned at 7:45pm

Arlene Miles
Clerk



FAIRFIELD HILLS SEWER SERVICE AREA

SCALE: 1" = 1,000 FT.
 DATE: MARCH 15, 2012

BALDWIN ROAD
 PUMP STATION

V.F.W. ?

NEWTOWN
 MIDDLE SCHOOL

FAIRFIELD HILLS
 SEWER SERVICE AREA

REED SCHOOL
 MAIN SEWER SERVICE AREA

STATE OF CT.
 SEWER SERVICE AREA

FAIRFIELD HILLS
 SEWER SERVICE AREA

STATE OF CT. (OR FTH)
 SEWER SERVICE AREA

STATE OF CT.
 SEWER SERVICE AREA

NEWTOWN
 HIGH SCHOOL

MPCF

POSTATUCK RIVER

OAKVIEW ROAD

BERKSHIRE ROAD

MILE HILL ROAD

DEEP BROOK

RIVER

COMMERCIAL ROAD

STREET

STREET

STREET

STREET

STREET

STREET

STREET

STREET

STREET

STREET

STREET

STREET

STREET

STREET

STREET



MONTHLY OPERATING REPORT
March 2012
TOWN OF NEWTOWN WPCF

EXECUTIVE SUMMARY

During the month of March the plant process performed well. Nitrogen removal has remained below permit level. The average pound per day during the month was 14.78 lbs. The open channel flow meter has been collected from both locations. The meters are located at a manhole on Main Street near School House rd. and Commerce Road. Taunton Lake will be our next areas of focus.

Oxidation ditch controller needs to be replaced, on order.

Inspecting and prepping the Alum and Ultraviolet process for their seasonal operations.

Below are some of the highlighted major operation and maintenance items that are currently in progress or completed.

OPERATION & MAINTENANCE

- Inspect all plant fire extinguishers, eyewash, and emergency exit lighting.
- Inspected and adjusted sludge pumps in the thickener building.
- Hosed secondary wells and troughs.
- Cleaned the grit washer screen, and hopper.
- Cleaned both levels in the filter building.
- Cleaned the roto-mat and the rag hopper.
- Greased gravity belt thickener.
- Inspected and cleaned all eye wash stations.
- Cleaned secondary tanks 1&2 draft tubes.
- Cleaned gravity belt thickener belt.
- Replaced brushes on both secondary clarifier algae sweeps.
- Replaced tubing on both influent and effluent samplers.
- Butterworth and Scheck repaired plumbing in the filter building plant water system.
- Pressure washed the ultraviolet light concrete channel.
- Hand washed and installed ultraviolet lights.
- Performed Permit required confined space entry for public works and installed grinder pump discharge for the dog pound.

PUMP STATIONS

- March 5th replaced grinder pump at 16 Diamond drive.
- March 24th replaced grinder pump at 5 Sunset rd.
- March 26th replaced grinder pump at Rand Whitney.
- Removed faulty ups battery back at Taunton pump station.

ODOR ABATEMENT

There were no odor complaints for the month.

STAFFING

We are presently fully staffed.

TRAINING

All employees continued with our in house OSHA compliance safety training through PureSafety.

REGULATORY COMPLIANCE

The plant will be issued a Notice of Violation for the plant generator. Air permit did not have the existing generator listed. updating

SOLIDS HANDLING

| Type | Gallons This Month | Target | Gallons This Year | Target |
|------------------|--------------------|-----------------------------|-------------------|-------------------------|
| Sludge (SYNAGRO) | 32,500 | 40,625 gal/mo 2 loads/wk | 0.213MG | 0.488 MG 75 loads/yr |

ANALYSIS OF WASTED SLUDGE

| Waste Activated Sludge | Total Gallons | Min % | Max % | Average % | Total Pounds |
|------------------------|---------------|-------|-------|-----------|--------------|
| SYNAGRO | 32,500 | 4.05 | 4.48 | 4.17 | 11,314 |

EMERGENCY CALL-OUTS

| Type | Total This Month | Total for Year |
|-----------------|------------------|----------------|
| Sewer Backup | 0 | 1 |
| Pump Station | 0 | 10 |
| Plant | 1 | 23 |
| Odor | 0 | 0 |
| Grinder Systems | 1 | 10 |

PLANT MAINTENANCE

The following data is provided as a record of maintenance work order activities during the month.

| Type | Total This Month | Total for Year |
|----------------------------|------------------|----------------|
| Preventative Maintenance | 10 | 56 |
| Corrective Maintenance | 20 | 185 |
| Emergency Maintenance | 0 | 28 |
| Call-Before-You-Dig (CBYD) | 28 | 287 |

FIELD OPERATIONS

| Type | Monthly Ft | Total for Yr | Contract | Amount Left |
|----------------------------|-------------|--------------|--------------|-------------|
| Sewer Cleaning Scheduled | 0 | 0 | 16,226 ft. | 16,226 |
| Sewer Cleaning Unscheduled | 0 | 0 | ***** | ***** |
| Other | Monthly Qty | Total for Yr | Contract | Amount Left |
| Manhole Inspections | 4 | 4 | ***** | N/A |
| Grinder Replacements | 3 | 24 | As Necessary | N/A |
| New Grinder Stations | 1 | 1 | ***** | N/A |

PUMP STATIONS

| Station | Baldwin | Hanover | Sandy Hook | Taunton Lake | Hawleyville | Fairfield Hills Metering |
|------------------------|---------|---------|------------|--------------|-------------|--------------------------|
| Number Inspections/Mo. | 8 | 8 | 8 | 9 | 8 | 8 |
| Service Failures | 0 | 0 | 0 | 0 | 0 | 0 |
| Number Callouts | 0 | 0 | 0 | 0 | 0 | 0 |
| Maintenance & Repair | 0 | 0 | 0 | 1 | 0 | 0 |
| Flow (Total MG) | 0.123 | .429 | 1.888 | .525 | 0.556 | 4.909 |
| (Avg. Daily GPD) | 3,978 | 13,847 | 60,910 | 16,939 | 17,952 | 158,355 |

FINANCIAL STATUS – MAINTENANCE

| Item | Budget \$ | \$ Spent/Mo | \$ Spent/Yr | \$ Remaining |
|--------------------------------|-----------|-------------|--------------|--------------|
| Preventative and Predictive | \$55,000 | \$2,096.53 | \$50,833.80 | \$4,166.20 |
| Capital Repair and Replacement | \$95,000 | \$2,022.85 | \$182,129.86 | -\$87,129.86 |

FLOW AND LOADS TRACKING

| Budget Month/Yr | Influent Flow, MGD | Influent BOD, lbs | Influent TSS, lbs | Calendar Month / Year | Average N, lbs |
|-------------------|--|---|---|-------------------------------|---------------------------------|
| July 2011 | .381 | 663 | 612 | January 2011 | 22 |
| August 2011 | .467 | 944 | 849 | February 2011 | 14.6 |
| September 2011 | .638 | 910 | 860 | March 2011 | 14.8 |
| October 2011 | .615 | 998 | 687 | April 2011 | |
| November 2011 | .546 | 903 | 793 | May 2011 | |
| December 2011 | .639 | 1096 | 1165 | June 2011 | |
| January 2012 | .565 | 771 | 870 | July 2011 | |
| February 2012 | .414 | 730 | 633 | August 2011 | |
| March 2012 | .393 | 701 | 682 | September 2011 | |
| April 2012 | | | | October 2011 | |
| May 2012 | | | | November 2011 | |
| June 2012 | | | | December 2011 | |
| Monthly Average | .518 | 857 | 795 | Calendar Year to Date Average | 17.1 |
| Contract | Average 0.53 MGD Adjustment = Change in Flow in MG * \$17.83/MG | Avg. 999 lbs/day Adjustment = Change in BOD in lbs * \$0.04/lb | Avg. 703 lbs/day Adjustment = Change in TSS in lbs * \$0.16/lb | Contract | NPDES Permit Limit = 17 Lbs/day |
| Deviation % (+/-) | -2.3 | -14.2 | 13.1 | Deviation % (+/-) | .6 |

FAIRFIELD HILLS WTF

EXECUTIVE SUMMARY

The staff continues to improve equipment and standard operating methods to prevent Fairfield Hills WTP failures. Well # 3 is operating as the lead pump at <50 gallons per minute. The water treatment plant operated very well in December.

The Water Supply Plan is near completion.

There was flushing of the lines at Fairfield Hills during the month of March.

Listed below are some of the highlighted major operation and maintenance items that are currently in progress or have been completed.

OPERATION & MAINTENANCE

- Inspected and made adjustments as needed.

STAFFING

Currently, all the regulatory required staffing positions are met for the Water Treatment Facilities.

REGULATORY COMPLIANCE

The Department of Health Monitoring Report did meet full compliance during the month.

EMERGENCY CALL-OUTS

| Type | Total This Month | Total for Year |
|-------------------------|------------------|----------------|
| Plant | 1 | 2 |
| Well Houses | 0 | 1 |
| Reservoirs (Storage) | 1 | 2 |
| Customer Service Issues | 0 | 0 |
| Water Main Breaks | 0 | 0 |

FAIRFIELD HILLS MAINTENANCE

The following data is provided as a record of maintenance work order activities during the month.

| Type | Total This Month | Total for Year |
|--------------------------|------------------|----------------|
| Preventative Maintenance | 3 | 48 |
| Corrective Maintenance | 2 | 4 |
| Emergency Maintenance | 0 | 0 |

FIELD OPERATIONS

| Other | Monthly Qty | Total for Year |
|-------------------------------|-------------|----------------|
| Valve Inspections | 0 | 0 |
| Hydrant Inspections | 3 | 3 |
| Service Inspections | 0 | 0 |
| Call-Before-You-Dig (CBYD) | 5 | 18 |

FINANCIAL STATUS – MAINTENANCE

| Item | Budget \$ | \$ Spent/Mo | \$ Spent/Yr | \$ Remaining |
|--------------------------------|-------------|-------------|-------------|--------------|
| Preventative and Predictive | \$15,500.00 | \$0.00 | \$12,216.94 | \$3,283.06 |
| Capital Repair and Replacement | \$20,000.00 | \$0.00 | \$1,785.76 | \$18,214.24 |

FLOW TRACKING

| Month/Yr | Well No. 3 Gallons | Well No. 7 Gallons | Well No. 8 Gallons | Plant Production Gallons |
|-----------------|-----------------------|-----------------------|-----------------------|-----------------------------|
| July 2011 | 1,166,000 | 4,733,800 | 0 | 5,899,800 |
| August 2011 | 990,000 | 4,258,900 | 0 | 5,248,900 |
| September 2011 | 950,000 | 4,299,000 | 0 | 5,249,000 |
| October 2011 | 1,008,000 | 4,960,700 | 0 | 5,968,700 |
| November 2011 | 663,000 | 3,413,900 | 0 | 4,076,900 |
| December 2011 | 731,000 | 4,019,700 | 0 | 4,750,700 |
| January 2012 | 755,000 | 4,456,700 | 0 | 5,211,700 |
| February 2012 | 648,000 | 3,878,700 | 0 | 4,526,700 |
| March 2012 | 767,000 | 4,665,900 | 0 | 5,432,900 |
| April 2012 | | | 0 | |
| May 2012 | | | 0 | |
| June 2012 | | | 0 | |
| Monthly Average | 853,111 | 4,298,588 | 0 | 5,151,700 |
| Daily Average | 24,742 | 150,513 | 0 | 175,255 |