



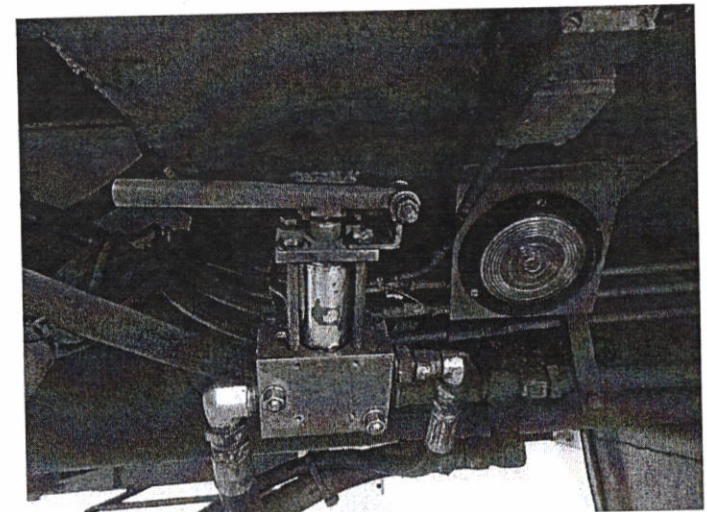
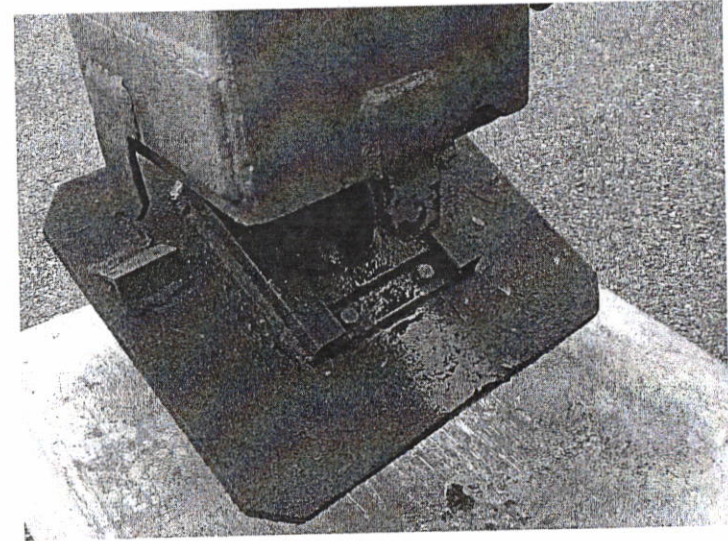
Ladder 1 Replacement

Ladder 1- 1984 LTI

- Ladder 1 was purchased in 1997 used from Pennsylvania for \$150,000
- It is a 108 ft Ladder with a 10k generator
- It has 20,800 miles, 5,014 truck hrs. and 9,454 ladder hrs..
- A ladder truck has a life expectancy of 25 years, ours is 28.
- Last year, repairs were \$12,000.

Reasons for replacement

- Frequent Repairs
- Costly Hydraulic Repairs
- Large Pistons needing replacement
- Ladder is twisted
- Drive train
- Torque Box is rusted
- Ladder pulls to left and extends slowly



Ladder Certification

- Per National Fire Protection Agency (NFPA) 1911- Ladders must be tested annually
- Ladders must meet strict requirements due to life safety
- Ladder failed last years inspection and cost \$12,000 to repair and pass
- We were told that it would be difficult to pass ladder on next inspection due to the rust on torque box area.
- Ladder is due for inspection in February

Rust on Torque Box Area

- The Torque Box area is the part of the truck where the ladder structure is attached, it holds all the weight of the ladder.
- The steel structure is measured in 1,000th's rather than inches or centimeters.
- Flaking paint reveals flaking steel that reduces the allowable thickness of the structure.

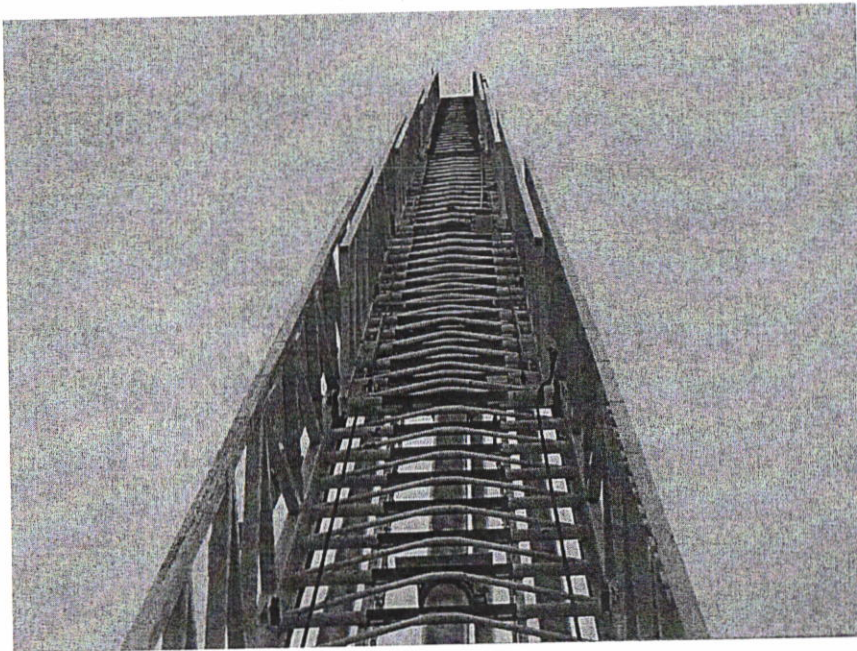


These areas show flaking paint and steel, along with areas that have been scraped down and painted over several times, there are other areas that are unreachable by camera that the Inspectors have warned us about.

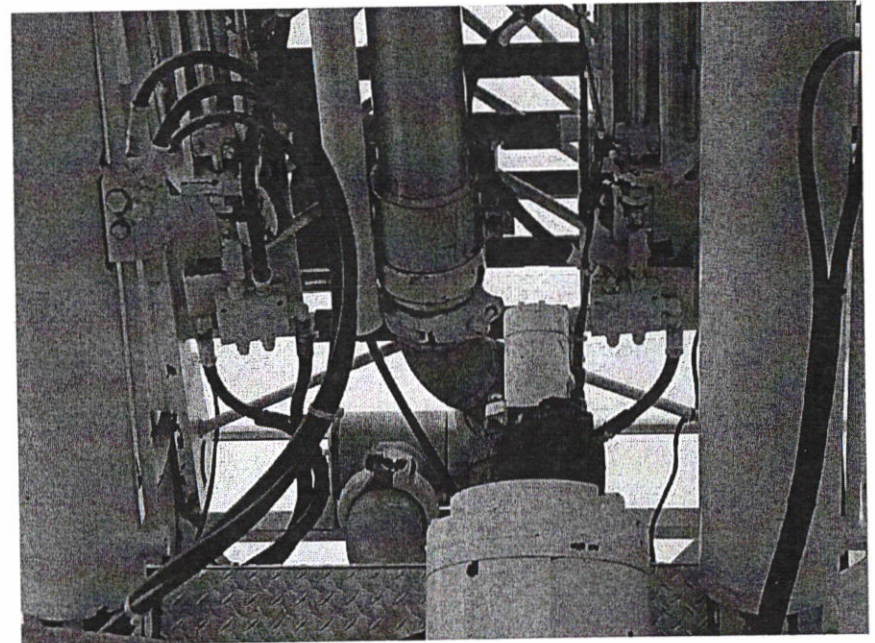
The Concerns with applying a sealant or preventer, is scraping the metal to a level that paint will stay applied.

Ladder Repairs

Ladder is Twisted



Large Piston Replacements



Replacing with a “Quint”

- A “Quint” is a multi-purpose truck
- It has a Ladder and a Pump
- With reduced manpower this truck allows for the deployment of fire hoses and ladder set up simultaneously.
- Many departments are going to these due to budget restraints and less manpower.

100' Quint

- 100 ft Ladder
- 500 gallons of water
- 10k watt Generator
- Pre-piped waterway
- Stabilization jacks that set up in 40 seconds
- Fire attack lines
- Water supply lines
- 150' of ground ladders
- Compartments that can fit rescue equipment
- 6 man cab with seatbelts
- Back up camera

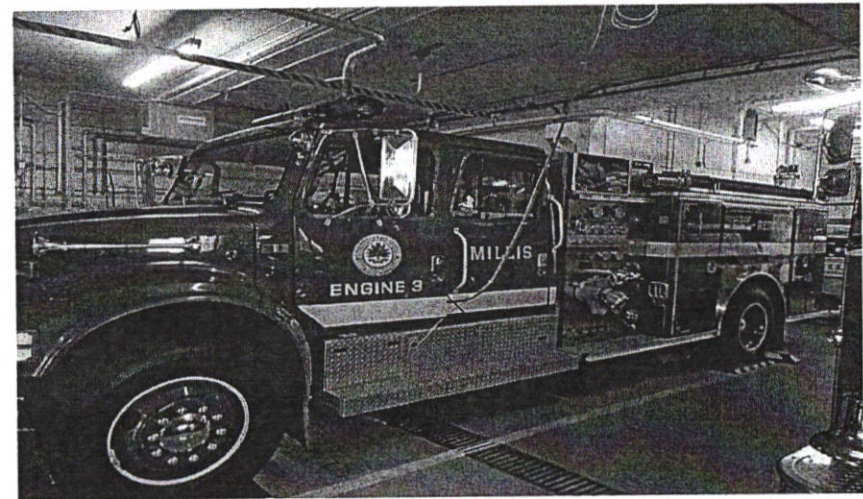


Frequently Asked Questions?

- ***Why do we need a 100ft ladder?***
- In our town like many others, we need the 100 ft for reach rather than height. Many houses are set back from road or we are unable to get close enough. Ladder trucks cannot be parked directly next to a building.
- ***Why do we not buy used again?***
- We were very lucky when we purchased the current ladder truck and we got the 15 years that we hoped for. Newer trucks have to meet newer standards that make them costly and finding a truck for less is difficult in this market.
- ***Why can't we just call another town?***
- There are several issues when considering using another town, the first is response time. Arriving on scene and needing a ladder truck to make a rescue and having to wait for one that is coming from another town can be very difficult and costly to the person or person's needing rescue. Calling another towns ladder for a Structure Fire is a common practice, calling another town for routine calls, chimney fires, tree rescue's and simple assist calls can be costly to another town.

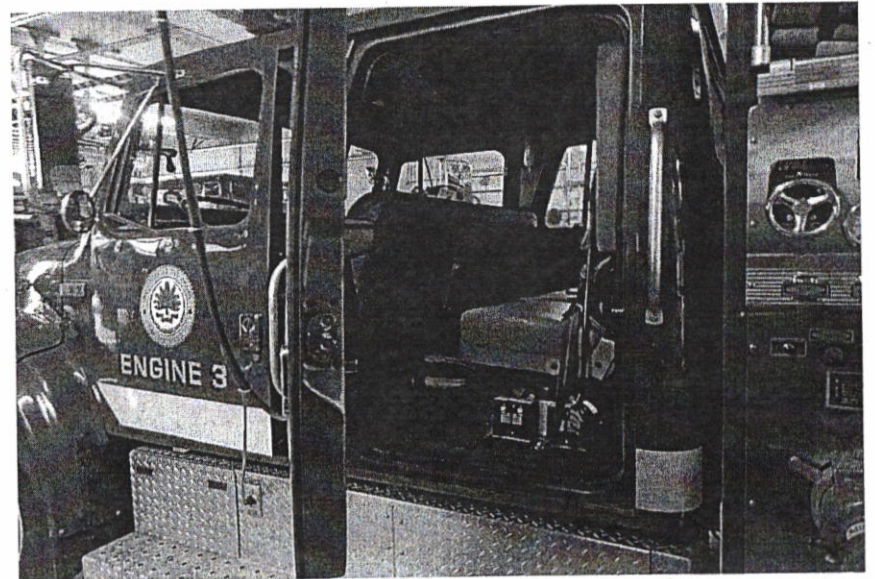
Recommendations

- Replace Ladder 1 and Engine 3 with the new Quint.
- Engine 3 is a truck that was purchased in 1995 and still holds some value.



Engine 3

- Engine 3 is the least used piece of apparatus in the fleet
- Built using a commercial chassis
- Small cab area
- Difficult for Firefighters to put on air packs
- Difficult to fit 3 firefighters in
- Carry's 500 Gallons of water
- Second set of Jaws of life and air bags.
- Used primarily for fuel leaks and back up water supply.
- Could be sold or traded



“Quint”

- Compartments for Jaws of Life, Airbags and rescue tools
- Holds the 500 gallons of water
- Spacious Cab to fit the 6 firefighters
- Would be the primary piece of the fleet
- Would have multiple uses
- 1 truck to maintain rather than 2.
- Reduced fuel cost
- 25 yr. Life expectancy
- 5yr Warranty



Cost of Quint-\$850,000

- If the Town was to do:
- A 1 year Debt exemption the cost would be \$288.36 per Household
- A 10 year Debt exemption would cost \$36.04 per household per year decreasing each year
- A 15 year Debt exemption would cost \$26.43 per household per year decreasing each year
- Figures were calculated using \$339,000 as the average home

February Inspection

- My concern is to continuously put money in the Ladder to pass inspection
- Continue to put off and hope it passes
- What if the Ladder fails
- The safety of the ladder for use.