



SMEAL FIRE APPARATUS CO.

2012 Smeal 105' Heavy Duty Aerial

Engine:	550 HP Cummins ISX15	Seating:	6
Transmission:	Allison 4000 EVS	Water/Foam:	480 / 20
Exterior:	2185 / 71096 Alt (White over Red)	Pump Size:	1750 GPM Waterous
Tip Load:	500 lbs. / 1250 GPM	Hose Bed:	EHL

Equipment and Accessories

- UL Pump/Aerial Certification
- PSG, FRC Pump Boss
- Two (2), 1-3/4" & one (1) 2-1/2" Crosslays
- Two (2), 2-1/2" Left Discharges
- One (1), 2-1/2" Right Discharge
- One (1), 4" Right Discharge
- Preplumbed for future foam system
- Flowmeter at Pump Panel
- ROM Rollup Compartment Doors
- Left side turntable access
- Compartment Venting
- Exhaust heat deflector shield
- Stainless Steel Pump Panels
- FRC Tank Level Gauge
- Stainless Steel Fenderettes
- Tow Rear Tow Eyes
- Seven (7), Single Air Bottle Compartments
- EHL (Ergonomic Hose Load)
- High Side Compartments, both sides
- Ground Ladders: (Duo Safety)
 - 10' Attic, 14' Fresno, 16' Roof
 - 24' Two Section, 35' Three Section
- Hose Bed Capacity: 1000' of 5" in 100' length
- Standard 12VDC VMux Electrical System
- LED Compartment Lighting
- Smart Power 10kW Hydraulic Generator
- Two (2), 1000 Watt Telescoping Lights
- Two (2), 120 Volt Receptacles
- Square D Load Center
- Code3 Warning Lights
- Line-X Compartment Interior Coating
- Chevron Pattern on Rear
- Undercoating
- Mud Flaps
- Wheel Chocks
- Bolt-On Egress
- Rubber Rung Covers
- LED Blue Rung Illumination
- Safety and Body Damage Interlocks
- Atkinson Two-way Aerial Intercom
- CP84 Chrome Plated Steel Waterway
- Positional Waterway
- TFT Monitor and Nozzle at Aerial Tip
- LoadMinder in addition to Load Chart
- Spartan Sirius Custom Chassis
- MFD 4-Door
- Fuel Tank 68 Gallons
- 23,000 lb. Front Axle
- 54,000 lb. Rear Axle
- 60 MPH Top Speed
- Goodyear Tires G296MSA / G622 RSD
- 24" Stainless Front Bumper
- XDuty Trim Interior
- Climate Control Heater/Defrost/AC
- Bostrom Cab Seats
- Six Battery System
- ProPower Battery Conditioner
- Pair of 24" Hadley Air Horns
- Electronic Siren Speaker

NFPA Complaint *DEMO PRICE*

MSRP: \$ 759,306

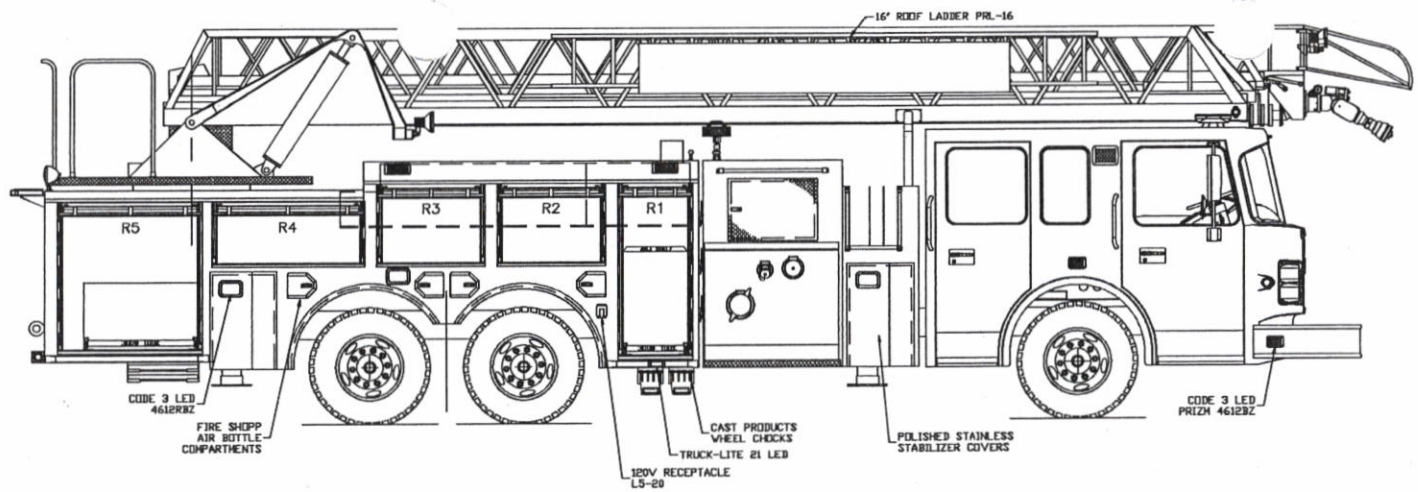
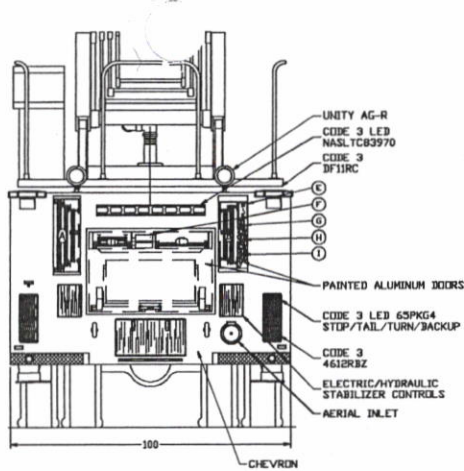
WE BUILD RESPECT.

610 West 4th Street
Snyder, NE 68664
(402) 568-2224

Stock Number: 4053

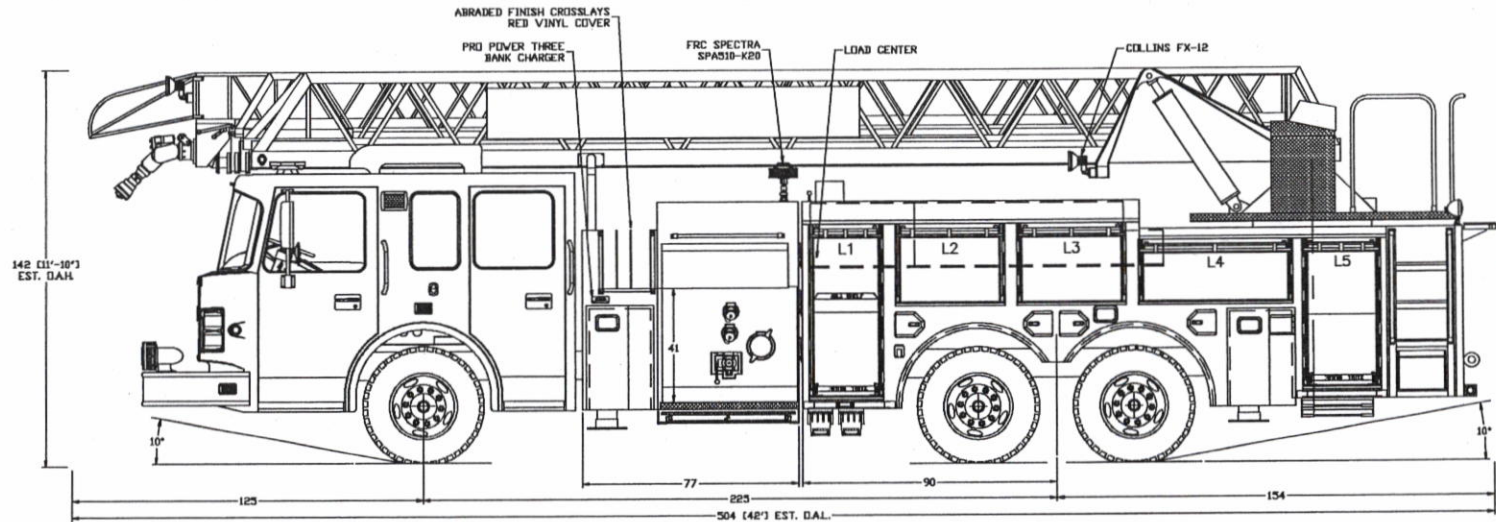
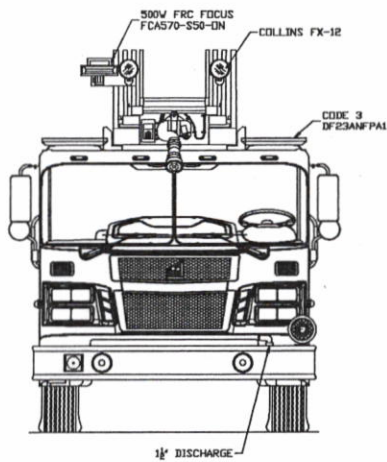
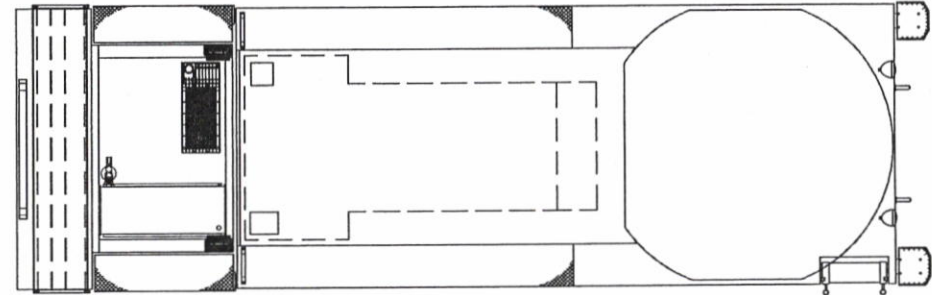
116090

Pricing and availability subject to change without notice. Smeal reserves the right to make changes to this unit without prior notice. Which may not be represented in the written specifications. Contact you local sales rep for complete specs.



GROUND LADDERS & PIKE POLES			
ITEM	DESCRIPTION	MODEL	QTY
A	35' 3 SEC	PEL3-35	1
B	24' 2 SEC	PEL-24	1
C	16' ROOF	PRL-16	1
D	14' FRESNO	AEL-14	1
E	10' ATTIC	FL-10	1
F	4' D-HANDLE	UL-4D	2
G	6' PIKE POLE	UL-6	2
H	8' PIKE POLE	UL-8	2
I	12' PIKE POLE	UL-12	2

COMPT.	OPENING	UPPER DEPTH	LOWER
L1	23W x 56H	14	23
L2/L3	35W x 23H	14	-
L4	51W x 17H	14	-
L5	24W x 48H	14	24
R1	23W x 56H	14	14
R2/R3	35W x 23H	14	-
R4	51W x 17H	14	-
R5	48W x 48H	14	24
INTERMEDIATE DIVIDE HEIGHT			
L1	30	L4/R4	25/24



NOTE:
 DIMENSIONS SHOWN ARE APPROXIMATE AND ARE SUBJECT TO CHANGE AS MAY BE FOUND NECESSARY DURING CONSTRUCTION. NDR DETAILS MAY NOT BE SHOWN.
 THIS DRAWING IS FOR REFERENCE PURPOSES ONLY. SOME ITEMS MAY OR MAY NOT APPEAR ON THE DRAWING THAT MAY OR MAY NOT BE INCLUDED IN THE SPECIFICATIONS. SPECIFICATIONS SHALL BE THE FINAL AUTHORITY TO BE DETERMINED WHAT IS SUPPLIED ON THE APPARATUS.

CHASSIS: SIRIUS MFD FLAT ROOF
 WATER TANK: 480 GAL
 FOAM TANK: 20 GAL
 HOSE LOAD: EHL 1000' OF 5"
 GENERATOR: SMART POWER HR-10 10kW
 COMPARTMENTS: 155 CUBIC FEET
 PUMP: WATERBUS S-100 C20 1750 GPM
 AUTOMATIC LEVELING SYSTEM

\$759,306 Demo
FINAL APPROVAL

Date	Approval Signatures	Revisions
	DEALER	
	FIRE CHIEF	
	SALES AID	
	PRODUCTION	
	ENGINEERING	



Revisions		SMEAL FIRE APPARATUS	
KS	REVISED 2/01/12	SNYDER, NE 68664	
		SMEAL DEMO 105' AERIAL	
Drawn by	KS	Scale	3/8"=1'
Check'd		Date	09/09/11
		Sheeting No.	4053
		18 x 24	SD

\$ 890,000

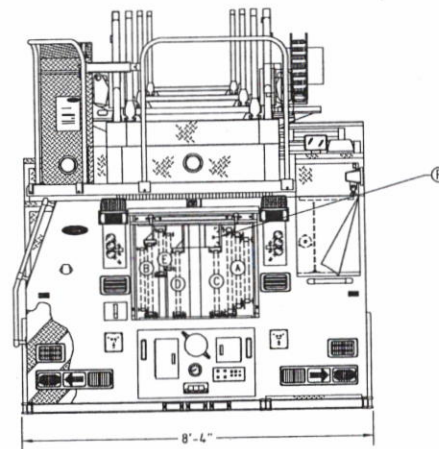


**MEDWAY FIRE DEPT.
MEDWAY, MA**

Q50844

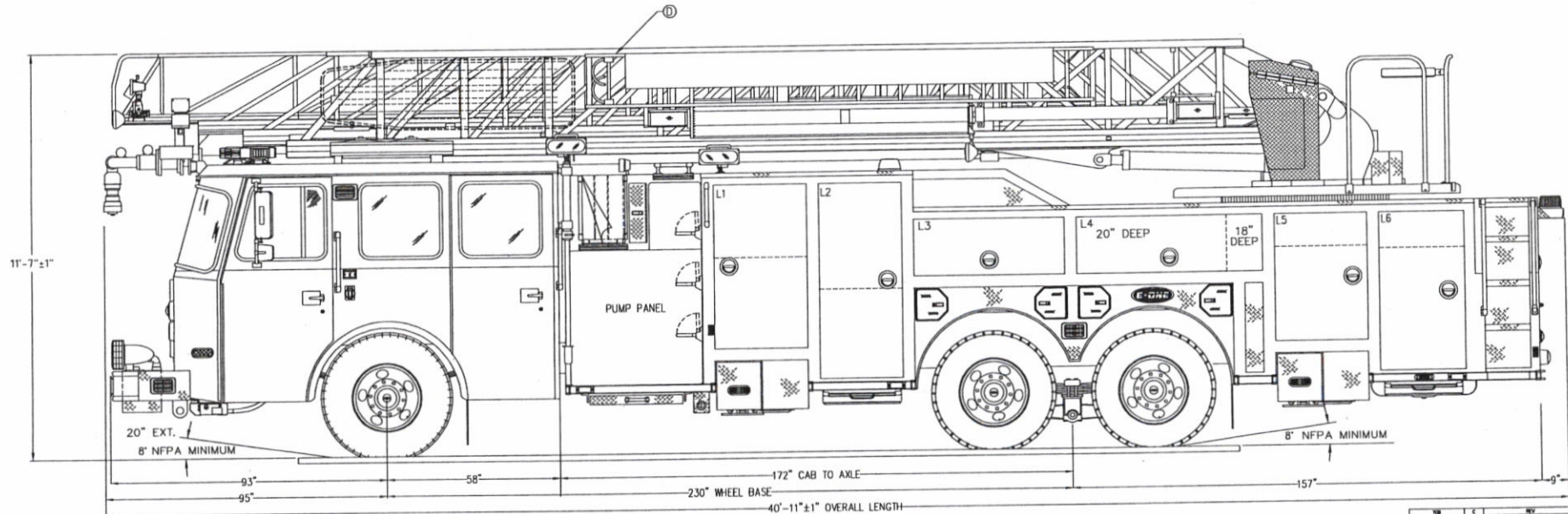
AERIAL BODY
CYCLONE II X CHASSIS
HP100 AERIAL LADDER

2000 G.P.M. HALE QMAX PUMP				HOSE LOAD:			
440 GALLON WATER TANK				400' OF 2.50" DJ			
10 GALLON INTEGRAL CLASS A FOAM				1000' OF 4.00" LDH			
COMPT.	OPENING		INTERIOR DIMENSION				
L1/R1	31W	55H	31W	24H	17D	UPPER	
			31W	30H	14D	LOWER	
L2/R2	28W	65H	28W	35H	17D	UPPER	
			28W	30H	26D	LOWER	
L3	50W	19H	50W	19H	26D		
L4	62W	19H	62W	19H	NOTED		
L5	31W	42H	31W	14H	18D	UPPER	
			31W	28H	14D	LOWER	
L6	28W	53H	28W	14H	18D	UPPER	
			28W	39H	23D	LOWER	
R3	31W	16H	31W	19H	14D		
R4	49W	30H	49W	30H	23D		
GROUND LADDERS							
ITEM	LADDER LENGTH	MODEL NUMBER	QTY				
A	35' 3-SECT.	PEL3-35	1				
B	24' 2-SECT.	PEL-24	1				
C	16' ROOF	PRL-16	1				
D	14' ROOF	PRL-14	2	ONE ON AERIAL			
E	12' ROOF	AEL-12	1				
F	10' FOLDING	FL-10	1				



THIS DRAWING IS FOR REFERENCE PURPOSES. ALL DIMENSIONS ARE SUBJECT TO MINOR VARIATIONS DUE TO MANUFACTURING PROCESSES.

This print is the property of Emergency One, Inc. and is loaned to you subject to return on demand, unless otherwise agreed to in writing by Emergency One, Inc. Its contents are confidential and must not be copied or submitted to third parties for use or examination.



NO.	REV.	DATE	BY	CHKD.	APP'D.
1	1				
2	1				
3	1				
4	1				
5	1				
6	1				
7	1				
8	1				
9	1				
10	1				
11	1				
12	1				
13	1				
14	1				
15	1				
16	1				
17	1				
18	1				
19	1				
20	1				
21	1				
22	1				
23	1				
24	1				
25	1				
26	1				
27	1				
28	1				
29	1				
30	1				
31	1				
32	1				
33	1				
34	1				
35	1				
36	1				
37	1				
38	1				
39	1				
40	1				
41	1				
42	1				
43	1				
44	1				
45	1				
46	1				
47	1				
48	1				
49	1				
50	1				
51	1				
52	1				
53	1				
54	1				
55	1				
56	1				
57	1				
58	1				
59	1				
60	1				
61	1				
62	1				
63	1				
64	1				
65	1				
66	1				
67	1				
68	1				
69	1				
70	1				
71	1				
72	1				
73	1				
74	1				
75	1				
76	1				
77	1				
78	1				
79	1				
80	1				
81	1				
82	1				
83	1				
84	1				
85	1				
86	1				
87	1				
88	1				
89	1				
90	1				
91	1				
92	1				
93	1				
94	1				
95	1				
96	1				
97	1				
98	1				
99	1				
100	1				

APX™ 7000

Project 25 Multi-Band Portable Radio



Top Display Model:

- Up to 96 channels
- Universal Push-to-Talk
- T-Grip
- Dual Battery Latch
- Orange emergency button
- 16 position rotary knob
- 2 position concentric switch
- 3 position toggle switch
- 3 programmable side buttons
- Transmit LED indicator
- Full Bitmap Top Display
 - 1 line of icons
 - 1 line x 8 characters of text
- No keypad



Dual Display Model:

- Same as APX Top Display model plus the following features:
- 1250 channels
- Dial from pre-stored lists or free-form entry
- Programmable soft keys for easy access to radio menus
- Backlit Keypad
 - Home and Data buttons
 - 3 soft keys
 - 4 direction navigation key
 - 4 x 3 keypad
- Full Bitmap Display
 - 2 lines of icons
 - 4 lines x 14 characters of text
 - Status icons

The APX 7000 Multi-Band P25 Portable Radio delivers exceptional performance combining advanced voice and data technology driven by the challenges of mission critical users.

Motorola's 4th generation P25 subscriber is multi-band (700/800 MHz and VHF), communicates with current and future networks (FDMA and TDMA) and has integrated GPS. Designed specifically for first responders the dual-sided mission critical design has both an audio and data side providing optimal functionality and loud and clear audio in a compact rugged form factor.



Quote Number: QU0000216759
Effective: 09 JAN 2013
Effective To: 10 MAR 2013

Bill-To:
MILLIS FIRE DEPT, TOWN OF
885 MAIN ST
MILLIS, MA 02054
United States

Ultimate Destination:
MILLIS FIRE DEPT, TOWN OF
885 MAIN ST
MILLIS, MA 02054
United States

Attention:
Name: CHIEF RICK BARRETT
Email: rbarrett@millisfire.com

Sales Contact:
Name: Kevin Jay
Email: kjay@cybercomminc.com
Phone: 7816471010

Contract Number: ITT40 MA STATE
Freight terms: FOB Destination
Payment terms: Net 45

Item	Quantity	Nomenclature	Description	List price	Your price	Extended Price
1	1	H98SDD9PW5AN	APX6000 UHF R2 MODEL 1.5 PORTABLE	\$1,900.00	\$1,539.00	\$1,539.00
1a	1	Q241BC	ADD: ANALOG OPERATION	-	-	-
1b	1	H885BK	ENH: 2 YEAR REPAIR SERVICE ADVANTAGE	\$84.00	\$84.00	\$84.00
1c	1	Q393CB	ALT: NIMH IMPRES 2000MAH FM IP67 BATT (NNTN7036)	\$95.00	\$76.95	\$76.95
1d	1	QA01427AB	ALT: HIGH IMPACT GREEN	\$25.00	\$20.25	\$20.25
1e	1	QA02829AA	ENH: LI ANALOG CONVENTIONAL	\$400.00	\$324.00	\$324.00
1f	1	H35BU	ADD: CONVENTIONAL OPERATION	\$500.00	\$405.00	\$405.00
2	1	WPLN7080A	IMPRES CG SU APX7000 US/NA/CA/LA	\$125.00	\$86.25	\$86.25
3	33	SVC03SVC0115D	SUBSCRIBER PROGRAMMING	\$1.00	\$1.00	\$33.00
4	42	SVC03SVC0116D	ENGRAVING SERVICES	\$1.00	\$1.00	\$42.00

Total Quote in USD

\$2,610.45

THIS QUOTE IS BASED ON THE FOLLOWING:

1 This quotation is provided to you for information purposes only and is not intended to be an offer or a binding proposal.

If you wish to purchase the quoted products, Motorola Solutions, Inc. ("Motorola") will be pleased to provide you with our standard terms and conditions of sale (which will include the capitalized provisions below), or alternatively, receive your purchase order which will be acknowledged.

Thank you for your consideration of Motorola products.

2 Quotes are exclusive of all installation and programming charges (unless expressly stated) and all applicable taxes.

3 Purchaser will be responsible for shipping costs, which will be added to the invoice.

4 Prices quoted are valid for thirty(30) days from the date of this quote.

5 Unless otherwise stated, payment will be due within thirty days after invoice. Invoicing will occur concurrently with shipping.

MOTOROLA DISCLAIMS ALL OTHER WARRANTIES WITH RESPECT TO THE ORDERED PRODUCTS, EXPRESS OR IMPLIED INCLUDING THE IMPLIED WARRANTIES OF MERCHANTABILITY AND FITNESS FOR A PARTICULAR PURPOSE.

USAlert WatchDog™

M and Mx series pagers

USAlert's continuation of
advanced paging products and
service excellence....

Synthesized and Five Channel



The *WatchDog M* series:
Easy to Operate, Extremely Loud and Rugged. With single channel or dual channel operation or five channel Models. Source alert text messaging and message time stamping. Tone alert, vibrate alert or simultaneous tone and vibrate. The WatchDog also has a true alphanumeric display making operational changes simple and fast. The 5 channel pager can operate on a single channel or any two of the five menu selectable channel frequencies.

The *WatchDog MX* series:
The same rugged design as the M series but with voice memory. The MX pagers voice memory with the display allows you to easily replay the message you need. Forward and reverse message select and replay.

A man's best friend is his dog
a fireman's best friend is his **WatchDog™**

USAlert, LLC
164 West Royal Palm Road
Boca Raton, Florida, 33432-3830
Phone: 561 394 9969

Sales: Robert O'Sullivan
Email: info@usalertllc.com
Fax: 561 394 9986
Web: www.usalertllc.com



CYBERCOMM INC.

Prepared by: Kevin Jay

Date: January 9, 2012

Prepared For: **MILLIS FIRE DEPARTMENT**
885 MAIN STREET
MILLIS, MA

Attn.: LT. RICK BARRETT

US Alert Pagers

<u>ITEM</u>	<u>QTY</u>	<u>DESCRIPTION</u>	<u>PRICE</u>	<u>EXTENDED</u>
<u>US Alert WatchDog Pager</u>				
1	1	US Alert WatchDog - UHF Frequency (483.700 mhz) - Single Frequency - Non- Stored Voice - 1 Battery Pack - Standard Charger - Synthesized - 12.5 KHz / 25 KHz - Audible or Vibrate - Five Year Warranty	\$ 367.00	\$ 367.00

NOTES:

- A) Millis FD to confirm pager frequency.
- B) US Alert will confirm 483.700 mhz is capability in the Watch Dog Pager.

US Alert Pagers

Please allow 3-4 weeks for delivery of equipment.

Programming: \$20/unit

Municipal Leasing and Financing Available.

Equipment Total:	\$ 367.00
Tax:	Exempt
Labor/Installation:	N/A
Programming:	\$ 20.00
Shipping:	PCC
TOTAL:	\$ 387.00

PRICING PROPOSAL PAGE - FCAM 2011 - AERIAL FIRE APPARATUS "QUINTS"

<u>BASE PRICE</u> - 50FT. TELEBOOM "HIGH END" MIDMOUNTED QUINT	\$494,518
<u>BASE PRICE</u> - HP75 "HIGH END" REAR MOUNTED QUINT	\$577,570
<u>BASE PRICE</u> - HP78 "HIGH END" REAR MOUNTED QUINT	\$584,550
<u>BASE PRICE</u> - HM100 "HIGH-END" REAR MOUNTED QUINT	\$688,378
<u>BASE PRICE</u> - HP100 "HIGH-END" REAR MOUNTED QUINT	\$749,435
* <u>BASE PRICE</u> - CR100 "HIGH-END" REAR MOUNTED QUINT	\$769,103
<u>BASE PRICE</u> - HM110 "HIGH-END" REAR MOUNTED QUINT	\$697,583
<u>BASE PRICE</u> - CR137 "HIGH-END" REAR MOUNTED QUINT	\$798,614

COST OF DEBT EXEMPTION

1-YEAR

PROPOSED COST		\$850,000.00					
YEAR	LOAN BALANCE	PRINCIPAL	TOTAL PAYMENT	LOAN BALANCE	COST PER \$1000/VALUE	COST AVG home at 339K	
1	\$850,000.00	\$850,000.00	\$850,000.00	\$0.00	\$0.851	\$288.36	

COST OF DEBT EXEMPTION

10-YEAR

PROPOSED COST YEAR	LOAN BALANCE	\$850,000.00		TOTAL PAYMENT	LOAN BALANCE	COST PER \$1000/VALUE	COST AVG home at 339K
		PRINCIPAL	INTEREST AT 3 %				
1	\$850,000.00	\$85,000.00	\$21,250.00	\$106,250.00	\$765,000.00	\$0.106	\$36.04
2	\$765,000.00	\$85,000.00	\$19,125.00	\$104,125.00	\$680,000.00	\$0.104	\$35.32
3	\$680,000.00	\$85,000.00	\$17,000.00	\$102,000.00	\$595,000.00	\$0.102	\$34.60
4	\$595,000.00	\$85,000.00	\$14,875.00	\$99,875.00	\$510,000.00	\$0.100	\$33.88
5	\$510,000.00	\$85,000.00	\$12,750.00	\$97,750.00	\$425,000.00	\$0.098	\$33.16
6	\$425,000.00	\$85,000.00	\$10,625.00	\$95,625.00	\$340,000.00	\$0.096	\$32.44
7	\$340,000.00	\$85,000.00	\$8,500.00	\$93,500.00	\$255,000.00	\$0.094	\$31.72
8	\$255,000.00	\$85,000.00	\$6,375.00	\$91,375.00	\$170,000.00	\$0.091	\$31.00
9	\$170,000.00	\$85,000.00	\$4,250.00	\$89,250.00	\$85,000.00	\$0.089	\$30.28
10	\$85,000.00	\$85,000.00	\$2,125.00	\$87,125.00	\$0.00	\$0.087	\$29.56

COST OF DEBT EXEMPTION

15-YEAR

PROPOSED COST		\$850,000.00					
YEAR	LOAN BALANCE	PRINCIPAL	INTEREST \$0.0250	TOTAL PAYMENT	LOAN BALANCE	COST PER \$1000/VALUE	COST AVG home at 339K
1	\$850,000.00	\$56,666.67	\$21,250.00	\$77,916.67	\$793,333.33	\$0.078	\$26.43
2	\$793,333.33	\$56,666.67	\$19,833.33	\$76,500.00	\$736,666.67	\$0.077	\$25.95
3	\$736,666.67	\$56,666.67	\$18,416.67	\$75,083.33	\$680,000.00	\$0.075	\$25.47
4	\$680,000.00	\$56,666.67	\$17,000.00	\$73,666.67	\$623,333.33	\$0.074	\$24.99
5	\$623,333.33	\$56,666.67	\$15,583.33	\$72,250.00	\$566,666.67	\$0.072	\$24.51
6	\$566,666.67	\$56,666.67	\$14,166.67	\$70,833.33	\$510,000.00	\$0.071	\$24.03
7	\$510,000.00	\$56,666.67	\$12,750.00	\$69,416.67	\$453,333.33	\$0.069	\$23.55
8	\$453,333.33	\$56,666.67	\$11,333.33	\$68,000.00	\$396,666.67	\$0.068	\$23.07
9	\$396,666.67	\$56,666.67	\$9,916.67	\$66,583.33	\$340,000.00	\$0.067	\$22.59
10	\$340,000.00	\$56,666.67	\$8,500.00	\$65,166.67	\$283,333.33	\$0.065	\$22.11
11	\$283,333.33	\$56,666.67	\$7,083.33	\$63,750.00	\$226,666.67	\$0.064	\$21.63
12	\$226,666.67	\$56,666.67	\$5,666.67	\$62,333.33	\$170,000.00	\$0.062	\$21.15
13	\$170,000.00	\$56,666.67	\$4,250.00	\$60,916.67	\$113,333.33	\$0.061	\$20.67
14	\$113,333.33	\$56,666.67	\$2,833.33	\$59,500.00	\$56,666.67	\$0.060	\$20.18
15	\$56,666.67	\$56,666.67	\$1,416.67	\$58,083.33	\$0.00	\$0.058	\$19.70