

TOWN COUNCIL AGENDA
February 22, 2016
7:00 P.M.

The Town Council meeting will be held in the Moose Hill Council Chambers, Town Hall, 268B Mammoth Road, Londonderry, NH. Regular meetings are cablecast live and videotaped for the convenience of our viewers at home. 7:00 PM

A. CALL TO ORDER

B. PUBLIC COMMENT

- 1.) Presentation of the Londonderry Police Department Annual Report
Presented by Chief Bill Hart, Capt. Chris Gandia and Lt. Kim Bernard

C. PUBLIC HEARING

D. OLD BUSINESS

E. NEW BUSINESS

- 1.) **Order #2016-07** – Expenditure of Maintenance Trust Fund
Presented by Steve Cotton
- 2.) BID Acceptance – Type 1, 2016 Ford F 550 Ambulance
Presented by Chief Darren O'Brien
- 3.) **Ordinance #2016-01** – An Amendment to the Zoning Ordinance Relating to Rezoning a Portion of Map 17, Lot 45, 280 Rockingham Road (**First Reading**)
- 4.) Quarterly Financial Update
Presented by Kevin Smith

F. APPROVAL OF MINUTES

Approval of February 1, 2016 Town Council Minutes

G. OTHER BUSINESS

1. Liaison Reports
2. Town Manager Report
3. Board/Committee Appointments/Reappointment

H. ADJOURNMENT

I. MEETING SCHEDULE

1. Town Council Meeting – **03/07/16** Moose Hill Council Chambers, 7:00 PM
2. Town Council Meeting – **03/21/16** Moose Hill Council Chambers, 7:00 PM
3. Town Council Meeting – **04/04/16** Moose Hill Council Chambers, 7:00 PM
4. Town Council Meeting – **05/02/16** Moose Hill Council Chambers, 7:00 PM

ORDER #2016-07

An Order Relative to

EXPENDITURE OF

MAINTENANCE TRUST FUNDS FOR VARIOUS PROJECTS

Reading: 02/22/2016

Adopted: 02/22/2016

WHEREAS voters since 2003 have approved funding for the maintenance and repair of public buildings and grounds in the town; and

WHEREAS by the Town Council of the Town of Londonderry that the Town Treasurer is hereby ordered to expend \$19,027.96 from the Expendable Maintenance Trust Fund for the aforementioned repairs and improvements.

NOW THEREFORE BE IT ORDERED by the Town Council of the Town of Londonderry that the Town Treasurer is hereby ordered to expend \$19,027.96 from the Expendable Maintenance Trust Fund for the aforementioned repairs and improvements.

John Farrell, Chairman
Town Council

Sharon Farrell
Town Clerk

A TRUE COPY ATTEST:
02/22/2016

**Expendable Maintenance Trust TC Order Request
for Town Council Meeting "2/22/16"**

Description	Vendor	Amount
<u>Replace sign and flag pole lights - South Fire Station</u> The sign lights (qty. 2), and flag pole light (qty. 1) ballasts/bulbs were burnt out. This EMTF request is for the labor and materials to upgrade the sign lights and flag pole light with LED lights. These lights were installed in 2006, and the warranty had expired.	Stephen - Marquis - Invoice #20231	\$ 1,164.00
		\$ 1,164.00
<u>Greenheck exhaust fans - South Fire Station</u> Two of the Greenheck exhaust fans in the exhaust duct work had the motors/bearings burn out. This EMT request is for the labor and materials to replace the two Greenheck exhaust fan assemblies. These exhaust fans were installed in 2006, and the warranty had expired.	SAM Mechanical - Invoice #2016189	\$ 1,254.50
		\$ 1,254.50
<u>HVAC Controls Replacement - Police Department</u> The existing HVAC controllers were installed in 2004, they manage the LPD buildings Heating/Cooling/Hot Water HVAC system. These controllers are failing/obsolete, and replacement parts are very difficult to procure. This EMTF request is to upgrade to the latest technology using Honeywell Spyder Controllers (qty. 3), Sylk I/O Modules (qty. 3), Spyder Operating System, Programming and Testing of the new controllers/modules/system software.	Burnell Controls - Quote 1/12/16	\$ 9,950.00
		\$ 9,950.00
<u>Exterior Light Repairs - North Fire Station</u> The various parking lot lights, wall pack lamps, overhead door lights, and flag pole light were not working. This EMTF request is for the labor and materials (24 bulbs, 3 ballasts) to get the various exterior lighting fixtures functional. These fixtures were installed in 2011, the warranty had expired on these devices.	Stephen - Marquis - Invoice #20293	\$ 1,984.46
		\$ 1,984.46
<u>Rear entry tile - North Fire Station</u> The leveling cement used in the rear entry foyer which the ceramic tiles were attached to had hollowed out under the tiles, and caused the tile to crack. This EMTF request is for the labor and materials to repair the rear entry tile area. The rear entry was installed in 2011, the two year workmanship warranty had expired.	Craig Drouin - Invoice #201662	\$ 1,175.00
		\$ 1,175.00
<u>Retro-Commissioning HVAC - North Fire Station</u> The HVAC System (Heat/Cooling/Hot Water) requires a 5 year retro-commissioning to check performance, identify any balancing issues, and develop a plan of action on potential enhancements and/or repairs to the HVAC system. This EMTF request is for the labor, and creation of the retro-commissioning report on the findings/recommendations from the retro-commissioning.	RFS Engineering - Quote 1/20/16	\$ 3,500.00
		\$ 3,500.00
Total Town Council EMTF Order		\$ 19,027.96



Professional Vehicle Corporation

12 Industrial Park Road
Rumford, Maine 04276

February 10, 2016

Town Of Londonderry
Finance Department
268 "B" Mammoth Road
Londonderry, NH 03053

Ambulance Bid

Professional Vehicle Corporation respectfully submits the following bid based on current bid specifications and current vehicle in production at AEV:

One, Type I , 2016 Ford F-550 4x4

Current vehicle in production:	\$ 232,920.00
Plus Chassis increase price:	<u>1,566.00</u>
Subtotal:	234,486.00

Less Ford GPC Discount:	<u>minus 3,800.00</u>
-------------------------	-----------------------

TOTAL: \$ 230,686.00
(Two-hundred thirty thousand, six hundred eighty-six dollars)

This bid does not include radios from Motorola. If you choose to bundle radio purchase into this project, we will add radios at the cost from Motorola.

Thank you for this opportunity,

David White



QUOTATION

Professional Vehicle Corporation

PVC
David White

Londonderry Fire Department
Michael McQuillen
280 Monmouth Road
Londonderry, NH 03053

Exp. Date: 07/11/2015
 Quote No: 10360-0089
 Job/Order No: 15OF 19431
 TYPE I: 172T1LWBFT 172 LWB Ford T1 Top Level Model
 GENERAL: Gen_Info *****BID STANDARDS*****
 CHASSIS: F-4/550LB *****F-Series 189 WB CHASSIS*****
 CONVERSION: 172T1LWBF 172 x 95 T-1 LWB Ford Mod Body, Conversion
 BASE: 172T1LWBFP 172 x 95 T-1 LWB Ford Base Price

07/06/2015

Page 1

DESCRIPTION	QTY	EACH	EXTENDED
Vehicle Quantity (1 Vehicle)	1	0.00	0.00
Quality Management System ISO 9001:2008 Registered	1	0.00	0.00
BODY NUMBER:	1	0.00	0.00
-- MICKEY BODY DUE DATE :	1	0.00	0.00
ACCOUNT MANAGER: Mikael Blevins	1	0.00	0.00
REFERENCE UNIT #:	1	0.00	0.00
RE-WRITE DATE : 6-11-15	1	0.00	0.00
SEAT BELT POSITIONS MODS	1	0.00	0.00
-- CAB SEAT BELT MOD:	1	0.00	0.00
-- Total: 2 Positions	1	0.00	0.00
-- REAR SEAT BELT MOD:	1	0.00	0.00
-- Total: 3 Positions	1	0.00	0.00
Type I Modular Ambulance	1	0.00	0.00
2015 Ford, F-550 4 x 4 DRW Reg Cab, 189" WB, XLT	1	0.00	0.00
-- Engine: 6.7L Scorpion, Pwr Stroke V-8 Turbo Diesel - F-series	1	0.00	0.00
-- Cab Interior Color: Gray (F-series)	1	0.00	0.00
-- F-Series 188.8" wheelbase- Turning Diameter 54.8' curb to curb	1	0.00	0.00
-- GVWR: 18,000 pounds, FAWR: 7,000, RAWR: 13,660 (4x4)	1	0.00	0.00
-- Tire, SPARE: Matching, Random Make	1	0.00	0.00
-- Location: Shipped Loose	1	0.00	0.00
-- Jack and Tire Tools: Install behind Passenger's seat	1	0.00	0.00
-- Wheel Finish: Polished SS Wheel Simulators (F-550)	1	0.00	0.00
-- Brakes, F-4/550: 4-Wheel Disc/Anti-lock, Power Assist	1	0.00	0.00
-- Cab Door Locks: Power	1	0.00	0.00
-- Floor Pedals: Brake and Accelerator, Adj..... 62M	1	0.00	0.00
-- Daytime Running Lights: Ford OEM	1	0.00	0.00
-- Shock Absorbers: OEM, HD Gas Type, 1.38 inch	1	0.00	0.00
-- Front stabilizer (Sway) Bar: OEM, 1.00 inch bar diameter	1	0.00	0.00
-- Fuel Tank: 40 Gallon, Aft Axle, Fords	1	0.00	0.00
-- Rear Axle: DANA 80, Full Float, 4.10:1 Ratio (F-4/550)	1	0.00	0.00
-- Tires: F-4/550, All season, Random Mk 225/70 R19.5, LR F	1	0.00	0.00
-- 47L - Ambulance Prep Package - F-Series	1	0.00	0.00
-- Alternator: Dual (OEM) Motorcraft Dual Per 47LJA	1	0.00	0.00
-- Throttle: Ford High Idle	1	0.00	0.00
-- Replacement Radio Kenwood eXcelon DNX891 HD -Ford F-series chassis with	1	2047.00	2047.00
sync			

DESCRIPTION	QTY	EACH	EXTENDED
-- Ford SYNC installed 91N	1	0.00	0.00
-- Tire Pressure Monitoring System: None	1	0.00	0.00
-- Side Mirrors, OEM: (F-Series) Pwr glass, Manual Telescopic	1	0.00	0.00
-- Rear Suspension: F-550 Liquid Spring, ILOS	1	3417.00	3417.00
-- ""DETAIL"" Liquid Rear Suspension Decal Install	1	0.00	0.00
-- Rear Stabilize (Sway) Bar: OEM, Ford F-450/550	1	0.00	0.00
-- Kneeling Feature: Enable Switch Located in CAB console	1	0.00	0.00
-- Kneeling Feature: Activated by TRAILING rear access door	1	0.00	0.00
-- Exhaust system termination point: OEM Location, Rt Rear	1	0.00	0.00
-- Vacuum Pump: For Heater Solenoid and Valves	1	0.00	0.00
Dealer installed Plymovent Adapter - to exit RIGHT side	1	677.00	677.00
Dealer supplied leather seats for cab	1	1800.00	1800.00
BODY	1	0.00	0.00
-- Body Build Information	1	0.00	0.00
-- ALL DIMENSIONS ON ORDER WILL HAVE A VARIABLE OF + OR - 1/4"	1	0.00	0.00
Body, Mod: Type 1 LWB, 172" x 95" x 72" Interior HR - 6" Body Drop Both Sides	1	408.00	408.00
-- Headroom: 74/72" Finished Interior - Ducted A/C	1	0.00	0.00
-- Compartment Construction: STANDARD, Unless Specified Otherwise	1	0.00	0.00
-- Compt Floors: Sweep-out, even with bottom door jamb	1	0.00	0.00
-- Compartment Ventilation - Austin Flap style #VT-2495-A01, STD	1	0.00	0.00
-- M-8 Compt (RF): Batt, 15.5" H x 25.25" W x 19.5" D	1	584.00	584.00
-- Battery Drawer compartment Construction: Smooth Aluminum	1	0.00	0.00
-- Compartment Door Panel: Smooth Aluminum	1	0.00	0.00
-- Compartment Finish: DA Sanded Aluminum	1	38.00	38.00
-- Compartment Drawer: Single Door 2pt Latch	1	0.00	0.00
-- Light, Compt, M-8 (Batt): NONE	1	0.00	0.00
-- Talk through, Cab to Mod Window (T1) With Sliding Window	1	0.00	0.00
-- Cab Roof Support : 3/16" x 3" Steel Plate, Per Engineering Drawing	1	0.00	0.00
-- Body Drop: 6" Both Sides, Ahead of Rear Wheels	1	179.00	179.00
-- Curb side Entry Door (CSE): 82.812 High x 31 Wide	1	0.00	0.00
-- Compt Door Check : Double Action Gas Shock	1	0.00	0.00
-- Door Swing Angle: Set just over 90 degrees	1	0.00	0.00
-- Step Well, CURBSIDE Entry Door, 2-Step Diamond Plate	1	0.00	0.00
-- Light, Step Well: 3" Weldon, White, STD	1	0.00	0.00
-- Light, Step Well #2 : NONE	1	0.00	0.00
-- M-1 Compt (LF): 72 HR, 67.5" H x 22.125" W x 19.5" D w/M1a compartment	1	0.00	0.00
-- M-1 Compartment Construction: Smooth Aluminum ILOS	1	0.00	0.00
-- Compartment Door Panel: D.A. Sanded Aluminum	1	0.00	0.00
-- Compartment Surface Finish: D.A. Sanded Aluminum	1	39.00	39.00
-- Compt Floor: Sweep-out, even with bottom door jamb.	1	0.00	0.00
-- Compartment Door: SINGLE DOOR, Forward hinged 2-point Latch	1	0.00	0.00
-- Light, Compartment: Kinequip #108818C 8", Strip Light, M-1, ILOS	1	15.00	15.00
-- Light, Compartment: Kinequip #108818C 8", Strip Light, Additional, Each	1	41.00	41.00
-- M-1a Compt (LF Upper): 72 HR, 17.56" H x 22.125" W x 19.5" D	1	474.00	474.00
-- M-1a Compartment Construction: Smooth Aluminum ILOS	1	0.00	0.00
-- Compartment Door Panel: D.A. Sanded Aluminum	1	0.00	0.00
-- Compartment Surface Finish: D.A. Sanded Aluminum	1	39.00	39.00
-- Compartment Door Ventilation - small punched half moon Louvered Door	1	0.00	0.00
-- Compt Floor: Sweep-out, even with bottom door jamb.	1	0.00	0.00
-- Compartment Door: SINGLE DOOR, 1-point Latch	1	0.00	0.00
-- Light, Compartment: Kinequip #108818C 8", Strip Light, M-1A, ILOS	1	15.00	15.00
-- M-2 Compt (LFM): 40.5" H x 51" W x 19.5" D	1	0.00	0.00
-- M-2 Compartment Construction: Smooth Aluminum ILOS	1	0.00	0.00
-- Compartment Door Panel: D.A. Sanded Aluminum	1	0.00	0.00
-- Compartment Surface Finish: D.A. Sanded Aluminum	1	39.00	39.00
-- Compt Floor: Sweep-out, even with bottom door jamb.	1	0.00	0.00

DESCRIPTION	QTY	EACH	EXTENDED
- Bio-Waste: Diamond Plate Closeout for Bio in A/A	1	0.00	0.00
- Doors, Compartment, DOUBLE DOORS (std)	1	0.00	0.00
- M-2 Shelf, Adjustable, Ext: .125 Alum, 2" Upward lip	1	0.00	0.00
- Shelf Bracket: CPI 90 Deg with Slotted Holes	1	0.00	0.00
- Light, Compartment: Kinequip #108818C 8", Strip Light, M-2, ILOS	1	15.00	15.00
- Light, Compartment: Kinequip #108818C 8", Strip Light, Additional, Each	1	41.00	41.00
- Condenser: OEM Only, Compt Floor Standard	1	0.00	0.00
- Standard Conduit: 1-1/2", with pull wire	1	0.00	0.00
- CONDUIT ORIGINATION POINT: M-1A compartment	1	0.00	0.00
- CONDUIT TERMINATION POINT: Behind A/A Board (Panel)	1	0.00	0.00
- Additional Conduit: 1-1/2", with pull wire, Type 1 units	1	0.00	0.00
- CONDUIT ORIGINATION POINT: Electrical Circuit board cabinet	1	0.00	0.00
- CONDUIT TERMINATION POINT: Behind Driver's seat	1	0.00	0.00
- Additional Conduit: 1-1/2", with pull wire, T	1	0.00	0.00
- CONDUIT ORIGINATION POINT: Electrical Circuit board cabinet	1	0.00	0.00
- CONDUIT TERMINATION POINT: M1A Compartment	1	0.00	0.00
- M-3 Compt (LR): 50" H x 42.6" W x 19.5" D	1	357.00	357.00
- M-3 Compartment Construction: Smooth Aluminum ILOS	1	0.00	0.00
- Compartment Door Panel: D.A. Sanded Aluminum	1	0.00	0.00
- Compartment Surface Finish: D.A. Sanded Aluminum	1	39.00	39.00
- Compt Floor: Sweep-out, even with bottom door jamb.	1	0.00	0.00
- Compartment Doors: DOUBLE DOORS, ILOS single	1	230.00	230.00
- Shelf, Adjustable, Ext: .125 Aluminum, 2" Upward Lips	1	129.00	129.00
- Shelf Bracket: CPI 90 Deg with Slotted Holes	1	0.00	0.00
- (2) SCBA Corner Mounting Plates	2	50.00	100.00
- Light, Compartment: Kinequip #108818C 8", Strip Light, M-3, ILOS	1	15.00	15.00
- Light, Compartment: Kinequip #108818C 8", Strip Light, Additional, Each	1	41.00	41.00
- M-5 Compt (RR): 72 HR, 82.8" H x 25.625" W x 21.0"D	1	0.00	0.00
- M-5 Compartment Construction: Smooth Aluminum ILOS	1	0.00	0.00
- Compartment Door Panel: D.A. Sanded Aluminum	1	0.00	0.00
- Compartment Surface Finish: D.A. Sanded Aluminum	1	39.00	39.00
- Compartment Ventilation - Compartment Ceiling O O O O	1	0.00	0.00
- Compt Floor: Sweep-out, even with bottom door jamb.	1	0.00	0.00
- Compartment Door: SINGLE DOOR, Forward hinged 2-point Latch	1	0.00	0.00
- M-5 Shelf, Adjustable, Ext: .125 Aluminum, Partial Width 2" lips upward	1	64.00	64.00
- Shelf Bracket: CPI 90 Deg with Slotted Holes	1	0.00	0.00
- M-5 Dividers, Vertical, Full compartment height, alum, Fixed	1	118.00	118.00
- Strap: 2" Webb, w/ Chrome Metal Seatbelt buckle	1	0.00	0.00
- 2" Footman Loops: Locate back from jamb	1	0.00	0.00
- Strap: 2" Webb, w/ Chrome Metal Seatbelt buckle IATS	1	18.00	18.00
- 2" Footman Loops: Locate back from jamb	1	0.00	0.00
- Light, Compartment: Kinequip #108818C 8", Strip Light, M-5, ILOS	1	15.00	15.00
- Light, Compartment: Kinequip #108818C 8", Strip Light, Additional, Each	1	41.00	41.00
- M-6 Compt (RRFwd): 19" H x 10.438" W x 19.5" D	1	0.00	0.00
- M-6 Compartment Construction: Smooth Aluminum ILOS	1	0.00	0.00
- Compartment Door Panel: D.A. Sanded Aluminum	1	0.00	0.00
- Compartment Surface Finish: D.A. Sanded Aluminum	1	39.00	39.00
- Compt Floor: Sweep-out, even with bottom door jamb.	1	0.00	0.00
- Compartment Door: SINGLE DOOR, 1-point Latch	1	0.00	0.00
- Light, Compartment: Kinequip #108818C 8", Strip Light, M-6, ILOS	1	15.00	15.00
- M-7 Compt (RF): 47.25" H x 25.25" W x I/O	1	0.00	0.00
- Compartment Door Panel: D.A. Sanded Aluminum	1	0.00	0.00
- Compartment Door: SINGLE DOOR, 1-point Latch	1	0.00	0.00
- Light, Compt: Vista LED Rope Style #FSW1F, IATS	1	214.00	214.00
- Rear Access Doors: 46 3/4" Wide x 60 5/8" High	1	0.00	0.00

DESCRIPTION	QTY	EACH	EXTENDED
WELDING - CELL 1	1	0.00	0.00
-- Stainless Steel - Sill protection: For the following compartments	1	0.00	0.00
-- M-1: Left Front Compartment - Single Bend	1	51.00	51.00
-- M-2: Left Front Middle Compartment - Single Bend	1	51.00	51.00
-- M-3: Left Rear Compartment - Single Bend	1	51.00	51.00
-- M-5: Right Rear Compartment - Single Bend	1	51.00	51.00
-- M-6: Right Rear Compartment - Single Bend	1	51.00	51.00
-- M-7: Right Front Compartment - Single Bend	1	51.00	51.00
-- Drive Shaft Loop	1	47.00	47.00
Fuel Fill: CPI C1045, Open Housing, Polished Bezel - (Std)	1	0.00	0.00
-- Fuel over Fill protection plate: Stainless Steel	1	77.00	77.00
Urea Fill: CPI FG5301-1 Inlet Housing	1	0.00	0.00
-- DEF over fill protection plate: Stainless Steel	1	77.00	77.00
BODY PROTECTION AND TRIM PACKAGE: F-Series	1	0.00	0.00
-- Wire/Hose Cover : Diamond Plate, Between Cab & Module	1	0.00	0.00
-- Bumper, Rear: HD Alum Framed w/DP pontoon covers	1	0.00	0.00
-- Step, Center: 2" x 7" Grip strut, flip-up	1	0.00	0.00
-- Dock Bumpers: Rubber 2 1/4" H x 16" W x 2" Thick	1	65.00	65.00
-- Fenders, Rear: Polished Aluminum (T-1)	1	0.00	0.00
-- Skirt Rails: Polished Diamond Plate, w/ 6 Kinequip Strip Lights, ILOS	1	449.00	449.00
-- Skirt rail Lights, Front Pair	1	0.00	0.00
-- (2) Skirt rail LED Strip Lights, Kinequip KFL-SLRC8, Red/White	1	114.00	114.00
-- Skirt rail Lights, Middle Pair	1	0.00	0.00
-- (2) Skirt rail LED Strip Lights, Kinequip KFL-SLRC8, Red/White	1	114.00	114.00
-- Skirt rail Lights, Rear Pair	1	0.00	0.00
-- (2) Skirt rail LED Strip Lights, Kinequip KFL-SLRC8, Red/White	1	114.00	114.00
-- Skirt rail Lights Switched: Primary/Secondary	1	0.00	0.00
-- Add'l LED Ground Lights : (2) Kinequip White 8" LED lights, Under Running	1	135.00	135.00
Boards			
-- LED Ground Lights : (6) Kinequip White 8" LED lights, In Skirt rails	1	308.00	308.00
-- LED Ground Lights Switched:	1	0.00	0.00
-- Rear Kick Plate: Polished Aluminum Diamond Plate	1	0.00	0.00
-- Rear Recovery Eyes: (2) Cast Iron - Paint Black	1	223.00	223.00
-- Eye Access Holes: (2) 5 inch Dia....., Align w/ eyes	1	0.00	0.00
-- Recessed Tag Area: Polished Aluminum Diamond Plate	1	0.00	0.00
-- Location: Centered in the kick plate	1	0.00	0.00
-- Tag Light: Kinequip LED #132703C	1	0.00	0.00
-- Corner Caps: 24.0" High, Alum Diamond Plate	1	0.00	0.00
-- Front Stone Guards: 24.0" High, Alum Diamond Plate	1	0.00	0.00
-- Rear Deflector: NONE	1	0.00	0.00
(2) Rear Door Hold Opens: Grabber Style, each door	1	0.00	0.00
Running Boards, DP, w/ Grip strut inserts Ford (Type1-2Door)	1	503.00	503.00
-- Mud Flaps Front: Modular, Rubber	1	0.00	0.00
-- Mud Flaps Rear: Modular, Rubber	1	0.00	0.00
-- Lights, Cab Step: 2" White LED, mounted in box front, (TOCOACCR)	1	135.00	135.00
EXTERIOR LIGHTING / HEAT/AC / INSULATION - CELL 2	1	0.00	0.00
Front Turn, Whelen M6 Series w/arrow, LED, Pair, IATS	1	234.00	234.00
-- Location: Front of Module, Below Outer Warning Lights	1	0.00	0.00
-- M6 Series Flange, Chrome Plated, Std: Each	2	0.00	0.00
CORNER CAP LED ICC/WARNING LIGHTS	1	0.00	0.00
-- Front Corner Cap LED ICC/Warning Lights: Warnings RED/WHITE	1	0.00	0.00
-- Front Center ICC Lts: (3) AMBER Kinequip LED No 112401A,	1	0.00	0.00
-- Front ICC Lt Guards: NONE	1	0.00	0.00
-- Rear Corner Cap LED ICC/Warning Lights: Warnings RED/AMBER	1	0.00	0.00
-- Rear Center ICC Lts: (3) RED Kinequip LED No 112401R	1	0.00	0.00
-- Rear ICC Lt Guards: NONE	1	0.00	0.00
-- ICC Warning Lights Switched: Primary Only	1	0.00	0.00

DESCRIPTION	QTY	EACH	EXTENDED
Tail Lights, Whelen LED Combinations , ILOS,	1	0.00	0.00
-- Side Marker Lts: (2) Whelen M6 LED Red Running/Turn, ILOS	1	215.00	215.00
-- M6 Series Flange, Chrome Plated, Std: Each	2	0.00	0.00
-- Whelen M6 Series, Tail Lights	1	0.00	0.00
-- Stop/Tail, Whelen M6 Series, LED, Pair	1	236.00	236.00
-- Turn, Whelen M6 Series, LED, Pair	1	205.00	205.00
-- Back up, Whelen M6 Series, LED, Pair	1	310.00	310.00
-- M6 Series Flange, Chrome Plated, Std: Three Pair	1	0.00	0.00
-- Access Panel: NONE Required	1	0.00	0.00
LED Patient on Board, Exterior, NONE	1	0.00	0.00
LED Lights, Door Panel Warning, Interior	1	0.00	0.00
-- Amber LED POB Light, Each	4	36.00	144.00
-- Red/White LED Light, Each, NONE	1	0.00	0.00
-- White LED Light, Each, NONE	1	0.00	0.00
-- Red LED POB Light, Each	5	36.00	180.00
-- Blue LED Light, Each, NONE	1	0.00	0.00
-- Lights Switched with Entry Door Switch	1	0.00	0.00
Underbody ("BUM") Lights : NONE	1	0.00	0.00
Patient Area Turn and Stop Light Indicator: None	1	0.00	0.00
Third (3rd) Brake Light: NONE	1	0.00	0.00
SCENE/FLOOD LIGHTS : Pioneer Series	1	0.00	0.00
-- High Intensity Light: Whelen Pioneer PSP1 - White Housing	2	720.00	1440.00
-- Single Housing Pioneer Plus PBA103, Semi Recessed	2	134.00	268.00
-- Location: (1) On Front and (1) on Rear of Modular	1	0.00	0.00
-- Rear PSP1 Light Activate: Rear Flood Switch, Reverse and Lead RA Door	1	0.00	0.00
-- Front PSP1 Light Activate: Front Flood Switch in Front Switch Panel	1	0.00	0.00
-- Add Activation: All Scene & Load Lights & Ground Lights in Reverse	1	42.00	42.00
-- Pioneer Plus Single, 75 watt, White Housing, PFP1, (2)	2	719.00	1438.00
-- Location: (1) on Front and (1) on Rear of Modular	2	0.00	0.00
-- Rear PFP1 Light Activate: Rear Flood Switch, Reverse and Lead RA Door	2	0.00	0.00
-- Front PFP1 Light Activate: Switch in Front Switch Panel Labeled Front Flood	2	0.00	0.00
-- Single Housing Pioneer Plus PBA103, Semi Recessed	2	134.00	268.00
-- Pioneer Plus Spot/Flood Light Combo, #PCP2 75 watt, (2)	1	2570.00	2570.00
-- Location:(1) Centered on each side of module	1	0.00	0.00
-- Dual Housing Pioneer Plus PBA203, Semi Recessed	2	235.00	470.00
--	1	0.00	0.00
AC (HVAC): ACC, Ducted in Ceiling - Vert.on floor behind attend seat -	1	0.00	0.00
-- AC COMPRESSOR: Tee into O.E.M.	1	0.00	0.00
-- AC Evaporator: ACC (AC/Heat unit) w/ dual fans - STD	1	0.00	0.00
-- Condensation Drain Pan: Internal ABS	1	0.00	0.00
-- Heater Hoses: EPDM - Nomex Rubber (per Ford QVM)	1	0.00	0.00
-- AC Hoses: Carrier "Quick Click" hose and fitting system	1	0.00	0.00
-- Side Plenum Grille, Return Air: Stamped Powder Coated Steel	1	0.00	0.00
-- Filter, Washable Carbon Pre-Filter	1	0.00	0.00
-- AC Register Panels: (Std)	1	0.00	0.00
-- Ducted AC Delivery: insulated & foil wrapped, 11 registers	1	0.00	0.00
-- Thermostat, Rear A/C, Digital, Kinnequip ILOS	1	161.00	161.00
-- LOCATION: Action Area	1	0.00	0.00
Espar Heater System: None	1	0.00	0.00
CEILING PANELS : Gloss Mica over 1/4" hard plywood	1	0.00	0.00
-- Dome Lts, LED K15: Kinequip, (5) Streetside, (5) Curbside	1	163.00	163.00
-- (5) Dome Light, Additional, LED K15: Kinequip	1	387.00	387.00
-- LOCATION: 100% In Center Ceiling Pad	1	0.00	0.00
-- Timer, Spring Wound, Constant Hot, Check out, 60 Minute	1	91.00	91.00
-- Timer to Power: All Center pad Lights	1	0.00	0.00
-- (2) Speakers: Stereo, patient compartment, in center pad	1	62.00	62.00
-- Volume Control, Stereo: in A/A, For Rear speakers	1	50.00	50.00

DESCRIPTION	QTY	EACH	EXTENDED
-- IV Hook No 1: CPI Rubber IV 2008-1(Recessed Mount), ILOS	1	96.00	96.00
-- LOCATION: Over head/chest area, primary patient on COT	1	0.00	0.00
-- IV Hook No 2: CPI Rubber IV 2008-1(Recessed Mount), ILOS	1	96.00	96.00
-- LOCATION: Over head/chest area, secondary patient on S/B	1	0.00	0.00
-- IV Hook No 3: Hook 07 w/ Velcro bag stabilizer - IATS	1	21.00	21.00
-- LOCATION: Over Knee/Foot area, primary patient on COT	1	0.00	0.00
-- IV Hook No 4: Hook 07 w/ Velcro bag stabilizer - IATS	1	21.00	21.00
-- LOCATION: Over Knee/Foot area, secondary patient on S/B	1	0.00	0.00
-- Recessed C/S Grab Rail, ceiling: 1.25 Dia..... 3 pt, 72in, Yellow Antimicrobial	1	0.00	0.00
-- Streetside Non-Recess Grab Rail, 1.25 Dia..... x 72", 3 point, Yellow	1	117.00	117.00
Insulation PKG:	1	0.00	0.00
-- Insulation: Circumferential PKG, Reflective w/ Air cell core	1	0.00	0.00
-- Blue Block foam ENTRY DOOR Insulated: 2" Thick IATS	1	200.00	200.00
-- Insulation: Floor, 1/2" Block Foam	1	0.00	0.00
-- Blue Block foam WALLS/CEILING Insulated PKG: 1" Thick, IATS Reflective	1	488.00	488.00
-- Stepwell Insulation: Urethane Froth Insulation, IATS	1	110.00	110.00
-- Light Bar Alternative, (4) Across Front, 92" or wider	1	0.00	0.00
-- Front of Module M Series LED System - 92" and wider	1	0.00	0.00
-- Whelen, M9 Series LED	1	0.00	0.00
-- Flasher for LED front of module: None	1	0.00	0.00
-- M9 Series Flange, Chrome Plated, Std: Two Pair	2	0.00	0.00
-- Light: Whelen M9, LED, RED LED/CLEAR Lens, Programmable iats	2	318.00	636.00
-- LED Lights: Programmable, Single Light	2	9.00	18.00
-- Light: Whelen M9, LED, Split RED/WHITE LED/CLEAR Lens, Programmable IATS	2	355.00	710.00
-- LED Lights: Programmable, Single Light	2	9.00	18.00
-- Alternative Lightbar Switching, Prim/Sec	1	0.00	0.00
-- Rear Light Bar: NONE	1	0.00	0.00
-- Traffic Advisor: Whelen TAM-85, (8) TIR6 lights	1	1237.00	1237.00
-- LOCATION: Mount over rear door above load lights	1	0.00	0.00
M SERIES LED WARNING LT SYSTEM - F-series LTD	1	0.00	0.00
-- Flasher: None, All M Series LED's Are Programmable	1	0.00	0.00
-- Flash Pattern: None, Internal Light Head Flasher	1	0.00	0.00
-- Warning Light SWITCH: center console, Primary / Secondary	1	0.00	0.00
-- Flash Pattern #1: SignalAlert	1	0.00	0.00
-- Opticom: 792H GTT Brand Opticom Unit installed	1	1875.00	1875.00
-- Opticom Location: Built into 600 Series Center Front Warning Light	1	148.00	148.00
-- Mirror Lights: NONE	1	0.00	0.00
-- (4) Grille Lights: Whelen Series, LED	1	0.00	0.00
-- Light: (2) Whelen 500 V Series 5V1R, LED, RED ILOS	2	269.00	538.00
-- Light: (2) Whelen 500 V Series 5V1R, LED, RED IATS	2	324.00	648.00
-- (2) Intersection Lights: Whelen M2 Series, LED	1	0.00	0.00
-- Flanges,(2) Chrome : Intersection M2	1	0.00	0.00
-- Light: Whelen M2, LED, WHITE/RED LED/CLEAR Lens pair ILOS	2	259.00	518.00
-- Program #1 Signal Alert	2	18.00	36.00
-- (1) Center Front Body Light: Whelen M9 Series, LED	1	0.00	0.00
-- M9 Series Flange, Chrome Plated, Std. Each	1	0.00	0.00
-- Light: Whelen M9, LED, WHITE LED/CLEAR Lens, Programmable ILOS	1	268.00	268.00
-- LED Lights: Programmable, Single Light	1	9.00	9.00
-- (2) Outer Front Body Lights: Whelen M9 Series, LED	1	0.00	0.00
-- M9 Series Flange Chrome Plated, Std: Pair	1	0.00	0.00
-- Light: Whelen M9, LED, RED LED/CLEAR Lens, Programmable ILOS	2	268.00	536.00
-- LED Lights: Programmable, Single Light	2	9.00	18.00

DESCRIPTION	QTY	EACH	EXTENDED
-- (4) Upper Side Body Lights: Whelen M9 Series, LED	1	0.00	0.00
-- M9 Series Flange, Chrome Plated, Std: Two Pair	1	0.00	0.00
-- Light: Whelen M9, LED, RED LED/CLEAR Lens, Programmable ILOS	4	268.00	1072.00
-- LED Lights: Programmable, Single Light	4	9.00	36.00
-- (2) Rear Intersection Lights: Whelen M7 Series, LED	1	63.00	63.00
-- M7 Series Flange, Chrome Plated, Std: Each	2	0.00	0.00
-- LED M7 Red - Pair	1	0.00	0.00
-- Light, Whelen LED M7 Red LED/Clear Lens - Programmable	2	122.00	244.00
-- LED Lights: Programmable, Single Light	2	9.00	18.00
-- (2) Outer Rear Body Lights: Whelen M9 Series, LED	1	0.00	0.00
-- M9 Series Flange Chrome Plated, Std: Pair	1	0.00	0.00
-- Light: Whelen M9, LED, RED LED/CLEAR Lens, Programmable ILOS	2	268.00	536.00
-- LED Lights: Programmable, Single Light	2	9.00	18.00
-- (2) Additional Rear Body Lights: Whelen M9 Series, LED	1	0.00	0.00
-- M9 Series Flange Chrome Plated, Std: Pair	1	0.00	0.00
-- Location: REAR, (1) aligned w/ EACH upper window in RA doors.	1	0.00	0.00
-- Light: Whelen M9, LED, RED LED/CLEAR Lens, Non-Programmable IATS	2	318.00	636.00
-- Brake Light Override: Wire into rear warning lights above	1	45.00	45.00
-- Override Function: During ALL modes	1	0.00	0.00
-- (1) Center Rear Body Light: Whelen M6 Series, LED ILOS	1	0.00	0.00
-- M6 Series Flange, Chrome Plated, Std: Each	1	0.00	0.00
-- LED M6 Amber - Each	1	147.00	147.00
-- Light: Whelen M6, LED, AMBER LED/CLEAR Lens, Programmable	1	0.00	0.00
-- LED Lights: Programmable, Single Light	1	9.00	9.00
-- Additional Kick Plate Lts, On Rear : NONE	1	0.00	0.00
-- LED Program Switch : NONE	1	0.00	0.00
ELECTRICAL - CELL 3	1	0.00	0.00
-- Customer Supplied Part(s) : Yes See account	1	0.00	0.00
Pre-wire, (2, For Customer Installed Rechargeable Flashlight,	2	44.00	88.00
-- Location: M3 Compartment	2	0.00	0.00
-- Powered: 12v Constant Hot	2	0.00	0.00
Hand Held Spot Light: Optronics, Blue Eye 400,000 CP	1	63.00	63.00
-- Hardwire the light to the center console	1	0.00	0.00
Batteries: 4 - Battery System - Type I Only	1	0.00	0.00
-- Batteries: (2) Interstate Batteries, IATS - Ford	1	549.00	549.00
-- Batteries: (4) Batteries, ILOS Type I	1	215.00	215.00
-- Batteries: (2) Under hood, (2) in M8 Cmpt	1	0.00	0.00
-- Battery Make: (2) OEM, (2) Interstate Group 31	1	284.00	284.00
-- Battery Switch & Auto-Battery Shut-down (Kill Circuit): 5 Minute	1	291.00	291.00
-- Remote Jump Start: Anderson Style Connector with Cable set	1	243.00	243.00
-- Remote Jump Start Point: Front Grille Area	1	0.00	0.00
Dash Light : NONE	1	0.00	0.00
Cabinet Light(s) : "DAY BRIGHT" LED Light, Each	7	98.00	686.00
-- Cab Interior Lights Switching: in Patient Area Console	1	44.00	44.00
PWR Door Locks: Module Doors - Full Mod T1	1	0.00	0.00
-- Door Locks, Tied into OEM System	1	64.00	64.00
-- OEM Key Fob: Included w/Chassis Unlock Mod Doors	1	0.00	0.00
-- Door Lock Switches : Integrated in Interior Entry door Handles	1	0.00	0.00
-- ONLY the following doors shall have power door locks:	1	0.00	0.00
-- Electric Door Lock: M1A Cmpt: (NONE)	1	0.00	0.00
-- Electric Door Lock: (M-1) Left Front Compartment	1	99.00	99.00
-- Electric Door Lock: (M-2) Left Middle Compartment	1	99.00	99.00
-- Electric Door Lock: (M-3) Left Rear Compartment	1	99.00	99.00
-- Electric Door Lock: Rear Access Doors	1	99.00	99.00
-- Electric Door Lock: (M-5) Right Rear Compartment	1	99.00	99.00

DESCRIPTION	QTY	EACH	EXTENDED
-- Electric Door Lock: (M-6) Right Rear, Forward Compt	1	99.00	99.00
-- Electric Door Lock: Curbside Access Door	1	99.00	99.00
-- Electric Door Lock: (M-7) Right Front Compt	1	99.00	99.00
-- Remote Keypad #1: Installed	1	245.00	245.00
-- Location: By Curbside Door	1	0.00	0.00
Door Unlock Switch, Momentary, Exterior, hidden	1	89.00	89.00
-- Location: Front Grille/Bumper Area	1	0.00	0.00
Back Up Camera: Installed Ext over Rr Doors - VCMS140I ASA (White Camera)	1	327.00	327.00
-- Camera Color: White	1	0.00	0.00
Patient Area Camera: Bullet Style (Grab rail Recess)	1	297.00	297.00
-- Camera Mounted Toward: Rear (Faces Forward)	1	0.00	0.00
Circuit Board, 12V: Multiplex VX1 / 1 Touch F3/4/550	1	2315.00	2315.00
-- Circuit Protection, 12V: FET - Auto-reset	1	0.00	0.00
-- Patient Area VX1 Panel:	1	0.00	0.00
-- Pt Area VX1 Switch Panel: One Standard In Patient Compartment	1	0.00	0.00
-- Switch Panel Located: Streetside A/A	1	0.00	0.00
-- 2nd Pt Area VX1 Switch Panel: To be Located	1	575.00	575.00
-- Switch Panel Located: Curbside	1	0.00	0.00
-- Sequencer, VX1, with load manager,	1	0.00	0.00
-- Type I - CAB Console: Pass Thru - 14" OAW	1	0.00	0.00
-- Engine Hour meter: OEM, Gauge Cluster	1	0.00	0.00
-- Cab Console : Type I	1	0.00	0.00
-- Map Light : None	1	0.00	0.00
-- Volt and Amp meters: Digital LED, Impower	1	439.00	439.00
-- Engraved LOGO: None	1	0.00	0.00
-- Indicator Light: AMBER Compt Open" light	1	0.00	0.00
-- Flashing light: Activate w/ ANY compartment door switch.	1	0.00	0.00
-- Indicator Light: GREEN "Amb Pwr" light	1	0.00	0.00
-- Steady burn light: Activate with Conversion power switch	1	0.00	0.00
-- Indicator Light: RED "Door Ajar" light	1	0.00	0.00
-- Flashing light: Activate w/ ANY Mod entry door switch.	1	0.00	0.00
-- Door/Compartment Ajar Buzzer: None	1	0.00	0.00
-- Add-on Console: F-series console	1	173.00	173.00
-- Drink Holder: (2) In Cab Console, Big Gulp Size	2	20.00	40.00
-- Drink Holder Location: Middle	2	0.00	0.00
-- Note Book Slot: Single - Full width by 4" wide	1	50.00	50.00
-- Double removable Lexan Divider(s)	1	28.00	28.00
-- Armrests, Padded, For Cab Seat, On center console	1	264.00	264.00
-- Custom Extension on rear of Console (Reference 13OF 16365)	1	50.00	50.00
-- Console Finish: Black, Textured "Easy Grip"	1	0.00	0.00
-- Console Finish: Black, Textured "Easy Grip"	1	0.00	0.00
Back-up Alarm: Standard	1	0.00	0.00
-- Cut Off Switch: Auto reset ,momentary style	1	0.00	0.00
Ground Straps, Module to Frame: (Qty 4) Braided	1	0.00	0.00
Inverter : Vanner 20-1050 CUL-DC - Full Mod	1	1233.00	1233.00
-- Portable Equip Charging Circuits: Included in Inverter	1	0.00	0.00
-- PREWIRE LOCATION: (1)Cab Console, (1) Behind A/A	1	0.00	0.00
-- Portable Equip Pwr Source: Ignition and/or Shoreline	1	0.00	0.00
-- Battery Charger/Conditioner: 55A - Built into Inverter	1	0.00	0.00
-- Built-in Battery Charger: Enable - Wire to Batteries	1	0.00	0.00
-- Inverter Location: M-1A (ULF) Compartment	1	0.00	0.00
-- Battery Status Panel: Kussmaul #091-189-12	1	187.00	187.00
-- Battery Status Panel Location: Directly above the Shoreline Inlet	1	0.00	0.00
Low Voltage Indicator: Amber with Buzzer	1	0.00	0.00
COMMUNICATION RADIO(S) RELATED	1	0.00	0.00

DESCRIPTION	QTY	EACH	EXTENDED
-- Radio Power No 1: 30A with Buss bar	1	17.00	17.00
-- Radio Power Source: Battery (Constant) Hot	1	0.00	0.00
-- LOCATION: Electrical Cabinet	1	0.00	0.00
-- Radio Power No 2: 30A with Buss bar	1	17.00	17.00
-- Radio Power Source: Battery Switch Hot	1	0.00	0.00
-- LOCATION: Electrical Cabinet	1	0.00	0.00
-- Radio Power No 3: 30A, Pos and Neg, 10 awg Wires	1	31.00	31.00
-- Radio Power Source: Battery (Constant) Hot	1	0.00	0.00
-- LOCATION: C/S Action Area Cabinet	1	0.00	0.00
-- Radio Power No 4: 30A, Pos and Neg, 10 awg Wires	1	31.00	31.00
-- Radio Power Source: Battery Switch Hot	1	0.00	0.00
-- LOCATION: C/S Action Area Cabinet	1	0.00	0.00
-- Radio Power No 5: 30A, Pos and Neg, 10 awg Wires	1	31.00	31.00
-- Radio Power Source: Battery Switch Hot	1	0.00	0.00
-- LOCATION: Behind Passenger's Seat	1	0.00	0.00
-- Radio Power No 6: 30A, Pos and Neg, 10 awg Wires	1	31.00	31.00
-- Radio Power Source: Battery Switch Hot	1	0.00	0.00
-- LOCATION: Behind Action Area Board	1	0.00	0.00
ANTENNA LEADS	1	0.00	0.00
-- Antenna Base w/ Coaxial Cable: KE794 #1	1	43.00	43.00
-- Roof Location: Roof Port #1	1	0.00	0.00
-- Termination Point: M1A Compartment	1	0.00	0.00
-- Antenna Base w/ Coaxial Cable: KE794 #2	1	43.00	43.00
-- ORIGINATION POINT: Roof Port No 2	1	0.00	0.00
-- Port Plate: None - Access thru center upholstery panel	1	0.00	0.00
-- Termination Point: M1A Compartment	1	0.00	0.00
-- Antenna Base w/ Coaxial Cable: KE794 #3	1	43.00	43.00
-- ORIGINATION POINT: Roof Port No 3	1	0.00	0.00
-- Port Plate: None - Access thru center upholstery panel	1	0.00	0.00
-- Termination Point: M1A Compartment	1	0.00	0.00
-- Antenna Base w/ Coaxial Cable: KE794 #4	1	43.00	43.00
-- ORIGINATION POINT: Roof Port No 4	1	0.00	0.00
-- Port Plate: None - Access thru center upholstery panel	1	0.00	0.00
-- Termination Point: M1A Compartment	1	0.00	0.00
-- Antenna Base w/ Coaxial Cable: KE794 #5	1	43.00	43.00
-- Roof Location: Roof Port #5	1	0.00	0.00
-- Termination Point: M1A Compartment	1	0.00	0.00
-- (4) Radio Cables , Customer Supplied prior to production, Installed	2	58.00	116.00
-- Patient Area Radio : None	1	0.00	0.00
-- GPS Unit, Customer Supplied prior to production, Installed	1	39.00	39.00
-- Modem Antenna, Customer Supplied prior to production, Installed	1	39.00	39.00
125V SHORE LINE AND OUTLETS	1	0.00	0.00
-- Shore Line Inlet: 20A Super Auto Eject, ILOS	1	236.00	236.00
-- Inlet location: Aft of Left Front compartment	1	0.00	0.00
-- Indicator Light, Shore line: Weather proof, power by SL, Amber	1	71.00	71.00
-- Cover, Yellow, Shore Line Inlet : 20A Super Auto Eject, STD	1	0.00	0.00
-- Inpower Timer: VCM-05-01SF, Installed	1	49.00	49.00
-- **125 Volt OUTLETS**	1	0.00	0.00
-- 125 VAC Outlet, No 1: 15A, Hospital Grade, IVORY	1	0.00	0.00
-- LOCATION: Action Area, standard location	1	0.00	0.00
-- Outlet mounting ORIENTATION: Vertical	1	0.00	0.00
-- 125 VAC Outlet, No 2: 15A, Hospital Grade, IVORY	1	0.00	0.00
-- LOCATION: RF ALS, I-3 Section (See Drawing)	1	0.00	0.00
-- Outlet mounting ORIENTATION: Vertical	1	0.00	0.00
-- 125 VAC Outlet, No 3: 15A, Hospital Grade, IVORY	1	82.00	82.00

DESCRIPTION	QTY	EACH	EXTENDED
- LOCATION: Curbside, see Drawing	1	0.00	0.00
- Outlet mounting ORIENTATION: Vertical	1	0.00	0.00
- 125 VAC Outlet, No 4: 15A, Hospital Grade, IVORY	1	82.00	82.00
- LOCATION: Telemetry Area, (See Drawing)	1	0.00	0.00
- Outlet mounting ORIENTATION: Vertical	1	0.00	0.00
- 125 VAC Outlet, No 5: 15A, Hospital Grade, IVORY	1	82.00	82.00
- LOCATION: Inside Cab Center Console	1	0.00	0.00
- Outlet mounting ORIENTATION: Vertical	1	0.00	0.00
INTERIOR 12 Volt OUTLETS	1	0.00	0.00
- 12V Outlet, No 1: Power Point Double Outlet- Wire thru Med Isolator	1	0.00	0.00
- LOCATION: Action Area, standard location	1	0.00	0.00
- Outlet mounting ORIENTATION: Vertical	1	0.00	0.00
- Power Source: Medical Isolator , Batt Sw Hot	1	0.00	0.00
- 12V Outlet, No 3: Power Point - Wire thru Med Isolator	1	44.00	44.00
- LOCATION: RF ALS I-2 Drawer, (See Drawing)	1	0.00	0.00
- Outlet mounting ORIENTATION: Vertical	1	0.00	0.00
- Power Source: The SAME as outlet No 1	1	0.00	0.00
- 12V Outlet, No 4: Power Point - Wire thru Med Isolator	1	44.00	44.00
- LOCATION: RF ALS, I-3 Section (See Drawing)	1	0.00	0.00
- Outlet mounting ORIENTATION: Vertical	1	0.00	0.00
- Power Source: The SAME as outlet No 1	1	0.00	0.00
- 12V Outlets, Triple Receptacle (SOCK-04D)	1	44.00	44.00
- Power Source: Medical Isolator #2 , Batt Sw Hot	1	0.00	0.00
- LOCATION: Talk Thru Side of Electrical Cabinet Above Fixed Shelf	1	0.00	0.00
- 12V Outlets, Double Receptacle (SOCK-04C), IATS	1	88.00	88.00
- Power Source: Medical Isolator #2 , Batt Sw Hot	1	0.00	0.00
- LOCATION: Cab Console	1	0.00	0.00
- 12V Outlet, DUAL USB Style Additional : Installed EACH	1	87.00	87.00
- LOCATION: Cab Console	1	0.00	0.00
Siren: Whelen, 295HFS2, Standard F-Series	1	0.00	0.00
- Siren /Air Horn/ Horn Switch: In Cab Console	1	0.00	0.00
Speaker, Bumper, Whelen #SAK40/SAK41,F-Series	1	0.00	0.00
Air Horn System: BUELL - F1	1	1157.00	1157.00
- Air Horns ACTIVATION: Single Foot Switch / Solenoid Valve N	1	0.00	0.00
- Air Tank Mounted to Frame Rail	1	0.00	0.00
- Air Tank, Additional, Mounted to Frame Rail	1	156.00	156.00
- Emergency Master Hot	1	0.00	0.00
- Compressor: Buel #6540, 20% Oil less Intermittent Duty	1	0.00	0.00
- Compressor Location: M1A Compartment	1	0.00	0.00
- Air Horn Location: Under Cab by Frame	1	0.00	0.00
- Left Air Horn: 18" Strombos Horn, Chrome, No 1064 (246 Hz)	1	0.00	0.00
- Right Air Horn: 18" Strombos Horn, Chrome, No 1064 (246 Hz)	1	0.00	0.00
CABINET SHOP - Modular	1	0.00	0.00
ALL DIMENSIONS ON ORDER WILL HAVE A VARIABLE OF + OR - 1/4"	1	0.00	0.00
Mica Colors: Gloss White over Stainless Steel	1	414.00	414.00
- Stainless Steel - FACE of Squad Bench including rear filler	1	0.00	0.00
- Stainless Steel - Lower Face of Wall Cabinet - Included	1	0.00	0.00
Polycarbonate Type/Color: Lexan - CLEAR	1	0.00	0.00
- Polycarbonate Handles: Full Length Extruded	1	0.00	0.00
Attendant Seat: EVS Executive #19005Y, Yellow 5-Point Belt	1	0.00	0.00
- Light Gray, EVS Executive Seat, Yellow 5-Point Belt	1	1368.00	1368.00
- Black Insert	1	0.00	0.00
- BASE: Swivel base for EVS Seat Option	1	138.00	138.00
- Attendant Seat, Armrest: Both Right and Left	1	0.00	0.00
AC CABINET: Evaporator, Std Location Behind Att Seat	1	0.00	0.00
LF Cabinet, Behind Att Seat: Cabinet "H"/(Elec Cab)	1	0.00	0.00

DESCRIPTION	QTY	EACH	EXTENDED
-- Plastic Vent: (2) Total, 1 column x 8 row, Vent 01	1	0.00	0.00
-- Door, Single Solid Flush Fitted	1	0.00	0.00
-- TRIM: U-shaped Door, J-trim opening	1	0.00	0.00
-- Hinge Orientation: RIGHT	1	0.00	0.00
-- Hinge: 1 1/2" Stainless Steel Piano Hinge	1	0.00	0.00
-- Round Pull Latch: Non-locking - Chrome Finish	1	19.00	19.00
Bulkhead Shelf Above Talk Thru: Installed IATS, See Drawing	1	126.00	126.00
Cabinet, (3) Glove Storage, over C/S Entry Door	1	332.00	332.00
-- Door: Overlay He, 1/2" Lexan ILOS - 3-glove dispense thru	1	20.00	20.00
-- Catches: Brass Grabbers w/ Adj tension	1	0.00	0.00
CURBSIDE UPPER: Over S/B, Mods	1	398.00	398.00
-- Cabinet K: (1) Opening with set back center divider	1	0.00	0.00
-- Doors, Sliding Lexan, Mitered AL Assy: Standard	1	0.00	0.00
-- Polycarbonate Handles: Full Length Extruded	1	0.00	0.00
Cabinet, (4) Glove Storage, over Rear Entry Doors	1	332.00	332.00
-- Door: Overlay hinge, 1/2" Lexan ILOS - 4-glove dispense thru	1	20.00	20.00
CURBSIDE REAR: Custom Cabinet Rear of S/B, Mods, 3 glove	1	508.00	508.00
-- Cabinet N: (1) Opening, Open Toward Aisle	1	0.00	0.00
-- Door: Single Hinged Right 1/2" Lexan ILOS	1	20.00	20.00
-- Round Pull Latch: Non-locking - Chrome Finish	1	19.00	19.00
-- Cabinet L: 3-Glove dispenser cabinet	1	0.00	0.00
-- Door: Overlay He, 1/2" Lexan ILOS - 3-glove dispense thru	1	20.00	20.00
-- Catches: Brass Grabbers w/ Adj tension	1	0.00	0.00
-- Cabinet M: Middle Section for Narcotics Storage	1	0.00	0.00
-- (1) Door, Single Solid, Flush - Drug Locker	1	0.00	0.00
-- TRIM: U-shaped Door, J-trim opening	1	0.00	0.00
-- Hinge Orientation: BOTTOM	1	0.00	0.00
-- Hinge: 1 1/2" Stainless Steel Piano Hinge	1	0.00	0.00
-- Kaba # 552 Auditcon 2: Installed	1	1625.00	1625.00
RF ALS Cabinet: Std T-1	1	0.00	0.00
-- Check the specified Walk through Door type (Station 5)	1	0.00	0.00
-- Cabinet I-1: Custom Mermaid MK 15 Location	1	0.00	0.00
-- Cabinet I-2: Drawer 6" High For IV Warmer	1	0.00	0.00
-- Drawer: Mica-wood body, Mica inside and out	1	0.00	0.00
-- Drawer Front: Flush Fitted	1	0.00	0.00
-- TRIM: U-shaped Door, J-trim opening	1	0.00	0.00
-- Round Pull Latch: Non-locking - Chrome Finish	1	19.00	19.00
-- Drawer Slides: Full Extension, Detachable	1	0.00	0.00
-- Outside Access: DELETE - Block Off M-7 Access	1	68.00	68.00
-- Cabinet I-3: Custom From I-2 Drawer Down W/Robinson Roll Up Door	1	0.00	0.00
-- Door, Roll up, Robinson Roll-o-matic, per opening	1	851.00	851.00
-- Outside Access: Thru M-7 (RF) Compartment door.	1	0.00	0.00
-- Interior MICA Color: White cabinet liner	1	0.00	0.00
-- Shelf Track: Small Alum Uni Strut Type	1	0.00	0.00
-- (2) Shelves: Adjustable mica over substrate with Alum Trim	1	0.00	0.00
Right Rear Cabinet: Cover over M-5compartment	1	0.00	0.00
-- Inside access into M-5: Face Aisle	1	179.00	179.00
-- Door, Single Solid, Flush Fitted	1	39.00	39.00
-- TRIM: U-shaped Door, J-trim opening	1	0.00	0.00
-- Hinge Orientation: RIGHT	1	0.00	0.00
-- Hinge: 1 1/2" Stainless Steel Piano Hinge	1	0.00	0.00
-- Round Pull Latch: Non-locking - Chrome Finish	1	19.00	19.00
	1	0.00	0.00
SQUAD BENCH: Standard	1	0.00	0.00
-- (2) Drawer Cabinet At Head of Bench	1	510.00	510.00
-- Drawer Front: Flush Fitted	1	0.00	0.00
-- TRIM: U-shaped Door, J-trim opening	1	0.00	0.00

DESCRIPTION	QTY	EACH	EXTENDED
-- Round Pull Latch: Non-locking - Chrome Finish	2	19.00	38.00
-- Drawer Slides: Full Extension, Detachable	1	0.00	0.00
-- See Upholstery Section for Post and Wheel Cup info	1	0.00	0.00
-- Bio-waste/Sharps No 1: Roll-out DRAWER	1	361.00	361.00
-- LOCATION: At head of Squad Bench, Roll out Toward Aisle	1	0.00	0.00
-- SHARPS CONTAINER: 3-Quart Bemis Container	1	0.00	0.00
-- WASTE CONTAINER: AEV 6 Quart	1	0.00	0.00
-- Storage Under Lid - Configure to M-6 Compartment Size	1	0.00	0.00
-- Squad Bench Lid: Single, One pc, 1-section	1	0.00	0.00
-- Hinge, Squad Bench Lid(s): Butt Style Hinges	1	0.00	0.00
-- Latch, Squad Bench Lid(s): Slam Action Paddle, Non-loc	1	0.00	0.00
-- Lid Checks: Gas shock, Dual Action	1	0.00	0.00
-- Edge Trim, Lids: Band w/ Laminate and J-Trim Protection	1	0.00	0.00
-- Restraint Net, Detachable, at head of S/B, Yellow Webbing	1	0.00	0.00
TOP CABINETS, - Standard, 72" Headroom	1	0.00	0.00
-- Cabinet A: Custom Non Angled Extended Over Telemetry Area	1	0.00	0.00
-- Shelf Track: NONE	1	0.00	0.00
-- (2) Shelves: Fixed Mica Over Wood	1	0.00	0.00
-- Doors, Sliding Lexan, Mitered AL Assy: Restocking	1	191.00	191.00
-- Dividers, (12) Adj 3/16" Lexan, w/ ABS slotted track - EA cab	1	157.00	157.00
-- Cabinet B: Non Angled toward the CPR seat (72"HR)	1	0.00	0.00
-- Shelf Track: NONE	1	0.00	0.00
-- (2) Shelves: Fixed Mica Over Wood	1	0.00	0.00
-- Doors, Sliding Lexan, Mitered AL Assy: Restocking	1	191.00	191.00
-- Dividers, (12) Adj 3/16" Lexan, w/ ABS slotted track - EA cab	1	157.00	157.00
Cabinet Over CPR: Over 24" wide Side seat	1	251.00	251.00
-- Door, Single, Overlay Hinged, 1/2" Lexan ILOS	1	20.00	20.00
-- Handle: "C" Handle W/ Reel Torque Hinges & Brass Grabber	1	0.00	0.00
WALL CABINET: CPR Seat w/Telemetry LWBT1	1	0.00	0.00
-- Action Area: Standard	1	0.00	0.00
-- A/A Countertop: Stainless Steel	1	116.00	116.00
-- Sharps Only in A/A With ABS Bezel	1	0.00	0.00
-- SHARPS CONTAINER: 3-Quart Bemis Container	1	0.00	0.00
-- Action Area Board: See Station No 6 for content	1	0.00	0.00
-- Cabinet C: Standard	1	0.00	0.00
-- Doors, Sliding Lexan, Mitered AL Assy: Restocking	1	191.00	191.00
-- No Inside Access to Exterior Compartment	1	0.00	0.00
-- Cabinet D: DELETE	1	0.00	0.00
-- Cabinet E: DELETE	1	0.00	0.00
-- Cabinet F: Standard	1	0.00	0.00
-- Door, Single, Overlay Hinged, 1/2" Lexan ILOS	1	110.00	110.00
-- Round Pull Latch: Non-locking - Chrome Finish	1	19.00	19.00
-- Side Seat: 24" - Single Position - Under Lid Storage w/Latch	1	183.00	183.00
-- Hinge, CPR Seat Lid(s): Butt Style Hinges	1	0.00	0.00
-- Back Rest: Fixed to Back Wall of CPR Seat w/clips	1	0.00	0.00
-- Telemetry Area: with armrest pad	1	0.00	0.00
-- Monitor Tray: Slide out with Lock-Out Slides	1	332.00	332.00
-- Telemetry Area: Mica Finish, color keyed to interior	1	0.00	0.00
-- Cabinet O1: Standard	1	0.00	0.00
-- Shelf Track: Small alum Unistrut type	1	0.00	0.00
-- (1) Shelf: Adjustable with Alum Trim	1	0.00	0.00
-- Door: Single Overlay 1/2" Lexan ILOS Hinged Right	1	20.00	20.00
-- Round Pull Latch: Non-locking - Chrome Finish	1	19.00	19.00
-- P6 - 6-Point Restraint System - with CPR Seat	1	0.00	0.00
-- (1) on Squad Bench, (1) CPR Side Seat	1	-200.00	-200.00
-- Squad Bench: No Secondary patient restraints	1	-38.00	-38.00
CABINET SET - CELL 4 - MOD	1	0.00	0.00

DESCRIPTION	QTY	EACH	EXTENDED
Sub Floor, 3/4" Plywood, Standard	1	0.00	0.00
Flooring: Lonpearl - #716, Marlin Silver	1	273.00	273.00
-- Flooring Main Edge: 3" Recessed (1/2" deep) roll-up	1	0.00	0.00
-- Rear Threshold, Stainless, 6" Wide x Full Width at rear doors	1	0.00	0.00
-- C/S Stepwell Threshold, Polished Diamond Plate	1	0.00	0.00
COT MOUNT HARDWARE: (Full Size Mod)	1	0.00	0.00
-- Cot Mount : Stryker, No 6377, Dual Position, Floor Mount	1	0.00	0.00
-- Cot Plates on floor: 16ga Stainless, Layout for cot below	1	154.00	154.00
-- Cot Position No 1: PRIMARY CENTER POSITION	1	0.00	0.00
-- Primary Cot position under floor reinforcement	1	0.00	0.00
-- Cot mount set up for: Stryker MX-pro	1	0.00	0.00
-- Cot Stop, Block: Stryker (6060-036-018) Long Hook	1	60.00	60.00
-- Cot Location No 2: SECONDARY SIDE POSITION, Left of center	1	0.00	0.00
-- Cot mount set up for: Stryker MX-pro	1	0.00	0.00
-- Q Straint System: NONE	1	0.00	0.00
-- Bariatric Hoist: Transafe Systems - Allied Products	1	3360.00	3360.00
-- Control for Hoist: remote pendant (coil cord) with plug	1	0.00	0.00
-- Storage for Controller: Cabinet M2 Compartment	1	0.00	0.00
-- Backup Activation: Head of Squad Bench just inside C/S Entry Door	1	0.00	0.00
-- Activation Interlock: Only operate with Vehicle in Park & Park Brake Applied	1	0.00	0.00
-- Ramps & Transition Plates - Dealer Installed	1	3100.00	3100.00
-- Rear Plates for Bariatric Hoist	1	1225.00	1225.00
Hanging Hardware: NONE	1	0.00	0.00
	1	0.00	0.00
OXYGEN / AIR / VACUUM System:	1	0.00	0.00
-- Oxygen Outlet No 1: Amico Console - Ohio Diamond Style	1	0.00	0.00
-- LOCATION: Action Area	1	0.00	0.00
-- Oxygen Outlet No 2: Amico Console - Ohio Diamond Style	1	0.00	0.00
-- LOCATION: Action Area	1	0.00	0.00
-- Oxygen Outlet No 3: Amico Console - Ohio Diamond Style	1	144.00	144.00
-- LOCATION: Curbside Action Area	1	0.00	0.00
-- Oxygen Outlet No 4: Amico Console - Ohio Diamond Style	1	144.00	144.00
-- LOCATION: Curbside Action Area	1	0.00	0.00
-- Port Cyl Rack No 1: Zico QR-D-2 - D or Jumbo D - No Strap Req	1	301.00	301.00
-- Location: Side of RF ALS Cabinet	1	0.00	0.00
-- Port Cyl Rack No 2: Zico QR-D-2 - D or Jumbo D - No Strap Req	1	301.00	301.00
-- Location: Side of RF ALS Cabinet	1	0.00	0.00
-- Rack No 1: M-cylinder, Zico #QRM, ILOS	1	269.00	269.00
-- Cylinder Type: OXYGEN - Green Colored Hose	1	0.00	0.00
-- Rack Location: M-1 (LF), corner of wall #2 and #3	1	0.00	0.00
-- Regulator Wrench: Cast aluminum, OXYGEN w/ cable lanyard	1	0.00	0.00
-- Electric Oxygen, 12V solenoid valve w/ manual by-pass	1	116.00	116.00
-- Vacuum System: SSCOR regulator/gauge panel in A/A	1	0.00	0.00
-- Collection Canister: Bemis, 1200 CC Capacity	1	0.00	0.00
-- VAC Plumbing: Direct from panel to canister - NO Outlet	1	0.00	0.00
-- Vacuum Pump: 49 State	1	0.00	0.00
-- Location: M-1a Compartment	1	0.00	0.00
-- PORTABLE SUCTION UNIT : NONE	1	0.00	0.00
-- Oxygen Gauge: Amico electronic Cyl pressure (contents)	1	624.00	624.00
-- Location: Action Area	1	0.00	0.00
TRIM / DOOR ASSEMBLY - CELL 5	1	0.00	0.00
-- Soft Touch Trim Kit: None	1	0.00	0.00
-- Handles, Ext: Tri-mark 030-1875, Free Float, Polished CNC finish	1	0.00	0.00
-- Grab Rail, (1), 18" Yellow Antimicrobial Rear Entry Assist std.	1	0.00	0.00
Entry Door Panels, Windows and Hardware	1	0.00	0.00
-- Interior Grab Handle Color: Yellow Antimicrobial	1	0.00	0.00

DESCRIPTION	QTY	EACH	EXTENDED
-- Grab Handle, CS Entry: (1) 3-pt "L" Shaped, Yellow Antimicrobial	1	83.00	83.00
-- Grab Handles, Rear Access: (2) 3-pt "L" Shaped, Yellow Antimicrobial	1	165.00	165.00
-- Grab Rail, (1), 10" IATS, Yellow Antimicrobial	1	59.00	59.00
-- Grab Rail, C/S wall, curve out over C/S Entry, Yellow Antimicrobial	1	116.00	116.00
-- Door Panels: Mica Upper / Upholstery / Stainless Steel Lower	1	291.00	291.00
-- Curbside Lower Door Panel: Stainless	1	0.00	0.00
-- UPPER Windows: RA Doors, Fixed Glass 17.3"W x 19.3"H	1	0.00	0.00
-- UPPER Window: CS Access, Fixed Glass, std tint	1	0.00	0.00
TRASH CONTAINER BRACKET: Mounted on Head End of Squad Bench	1	69.00	69.00
-- WASTE CONTAINER: Rubbermaid #29561	1	0.00	0.00
Talk Through Window: Sliding Lexan Window - CLEAR	1	0.00	0.00
-- Sliding Window Locking Pin: 1/4" with Lanyard	1	0.00	0.00
Dri-Dek Compt Floors and shelves, Gray	1	248.00	248.00
-- Dri-Dek EDGES: Gray, Beveled frontal edges	1	46.00	46.00
-- Life Pak Bracket: Zoll X-Series Defibrillator, Installed	1	734.00	734.00
-- Monitor Mounting: Bolted in place	1	0.00	0.00
-- Dealer installed Smithworks IV warmer-softsak	1	563.00	563.00
ELECTRICAL Point to Point - CELL 6	1	0.00	0.00
-- Map Light : None	1	0.00	0.00
Temp Controlled Cabinet, Mermaid 1.5 Cu Ft, 12V, MK15 S/S	1	2795.00	2795.00
-- Mermaid Standard Medeco Cam key Lock Installed	1	0.00	0.00
-- Accessory Load Manager: For Cooling Cabinet or Fridge	1	139.00	139.00
-- Location: I-1 Cabinet	1	0.00	0.00
Action Area Light: 12V, LED, Surface Mount	1	0.00	0.00
-- Light Location: Action Area	1	0.00	0.00
UPHOLSTERY - CELL 7	1	0.00	0.00
Upholstery Color: Light Gray (Dove) Vac form	1	0.00	0.00
-- Center Trough Upholstery Color: Color Key to Rest of Truck	1	0.00	0.00
Uph Joint Type: Vacuum Formed - Seamless	1	0.00	0.00
Squad Bench seat cushion cut-outs: None	1	0.00	0.00
Head Protection: Pad over CS Entry Door	1	0.00	0.00
Head Protection: 2" Pad over Rear Access Doors, Full Width	1	0.00	0.00
-- Clocks: (2) Intellitec Digital / Sweep Emergency Time Manager	2	284.00	568.00
-- Location: (1) Over Rear Doors Between Gloves & (1) In C/S Action Area	2	0.00	0.00
Cabinet			
-- Dealer installed (3) Fire Vulcans & (1) SL20XP Flashlights	2	698.00	1396.00
PAINT - STRIPES - DECALS	1	0.00	0.00
-- Undercoating : Per QVM Guidelines, STD	1	0.00	0.00
Reflective Tape: On painted edges of Exterior Door Frame	1	0.00	0.00
Compartment Finish: Diamond Plate Standard	1	0.00	0.00
Primary (Over All) Color: White and Red	1	3650.00	3650.00
-- Flip Step Reflective/Prismatic Tape: Red/White/R/W/R/W/R	1	0.00	0.00
-- Tape Stripe: NONE (KKK-F Deviation)	1	0.00	0.00
-- Box Roof Oxford White (YZ) ILO Over All	1	510.00	510.00
-- Roof Paint: Color and finish quality to be GLOSSY	1	0.00	0.00
-- Install Frosted Star of Life on Each Rear Window	1	60.00	60.00
-- Tape belt, paint & chevrons	1	2574.00	2574.00
-- Outer Section: without doors	1	0.00	0.00
-- Rear Chevron Flat panel, no doors Diamond Grade Reflective: Double Color	1	1163.00	1163.00
-- Rear Kickplate: None	1	0.00	0.00
Lettering: Per customer specs	1	4500.00	4500.00
Drip Rails: Bright Aluminum, De-burred and rounded corners	1	0.00	0.00
DETAIL - SHIP LOOSE ITEMS	1	0.00	0.00

DESCRIPTION	QTY	EACH	EXTENDED
-- Drip Rails: Detail-Refer to Paint Section for Drip Rail Information	1	0.00	0.00
-- Jumper Cable Set With Anderson Plug (Shipped Loose)	1	0.00	0.00
-- Owner's Manual DVD ship loose	1	0.00	0.00
-- Amico O2 Minder, Transducer, ship loose	1	0.00	0.00
Decals: KKK / DOT Pkg, Blue/White reflective - Ship Loose	1	0.00	0.00
-- Decals: 32" Star of Life - Ship Loose	1	0.00	0.00
Decals: NO SMOKING & SEATBELT, installed, cab & pt. area.	1	0.00	0.00
AEV Logos: Installed on unit per AEV standard locations	1	0.00	0.00
Fire Extinguisher, 5 pound, shipped loose, IATS	1	59.00	59.00
Fire Extinguisher, 5 pound, shipped loose, Std	1	0.00	0.00
Reflector Pkg: Body - 2ea, Side Fr Amber, Side Re Red, Rear	1	0.00	0.00
Post And Wheel Caps: NONE	1	0.00	0.00
Spare Tire: Refer To Chassis Section to See if it gets one.	1	0.00	0.00
Primary Cot: NONE included	1	0.00	0.00
Secondary Stretcher: NONE included	1	0.00	0.00
Indemnification Statement	1	0.00	0.00
GENERAL CONVERSION	1	0.00	0.00
	1	0.00	0.00
2015**172** F-550 4 x 4 and CONV PKG - 15-1	1	142253.00	142253.00
	1	0.00	0.00
-- Two Factory trips - 6 people	1	5000.00	5000.00
Subtotal			232920.00
-- Less Customer GPC Discount QD726	1	-3400.00	-3400.00
-- Less Trade In 2007 AEV Type II ambulance	1	-10000.00	-10000.00
-- ***END OF ORDER***	1	0.00	0.00
Total			219,520.00

First Reading: 02/22/16
Second Reading/Public Hearing: 03/21/16
Adopted: xx/xx/xx

ORDINANCE #2016-01
AN AMENDMENT TO THE ZONING ORDINANCE
RELATING TO REZONING A PORTION OF
MAP 17, LOT 45
280 ROCKINGHAM ROAD

WHEREAS the Planning Board has received a request to rezone a portion of the above-referenced parcel from Industrial I (IND-I) to Multi-Family Residential III (R-III); and

WHEREAS the Planning Board finds that rezoning that portion of the lot as identified on the plan prepared by HSI for Evans Family Limited Partnership, dated December 28, 2015, from Industrial I to Residential III would expand the existing Residential III zoned area of the subject parcel from approximately 20.8 to 47.3 acres and increase the development potential for the lot fronting on Sanborn Road; and

WHEREAS the Planning Board has recommended that the Town Council act favorably upon the request; and

WHEREAS the requested rezoning will make the zoning of this lot consistent with current zoning on the subject parcel and adjacent lots to the south and west;

NOW THEREFORE BE IT ORDAINED by the Town Council of the Town of Londonderry that the Town Zoning Ordinance be amended to reflect the rezoning of a portion of Map 17 Lot 45 from Industrial I (IND-I) to Multi-Family Residential III (R-III), to become effective upon passage of this ordinance.

John Farrell - Chairman
Town Council

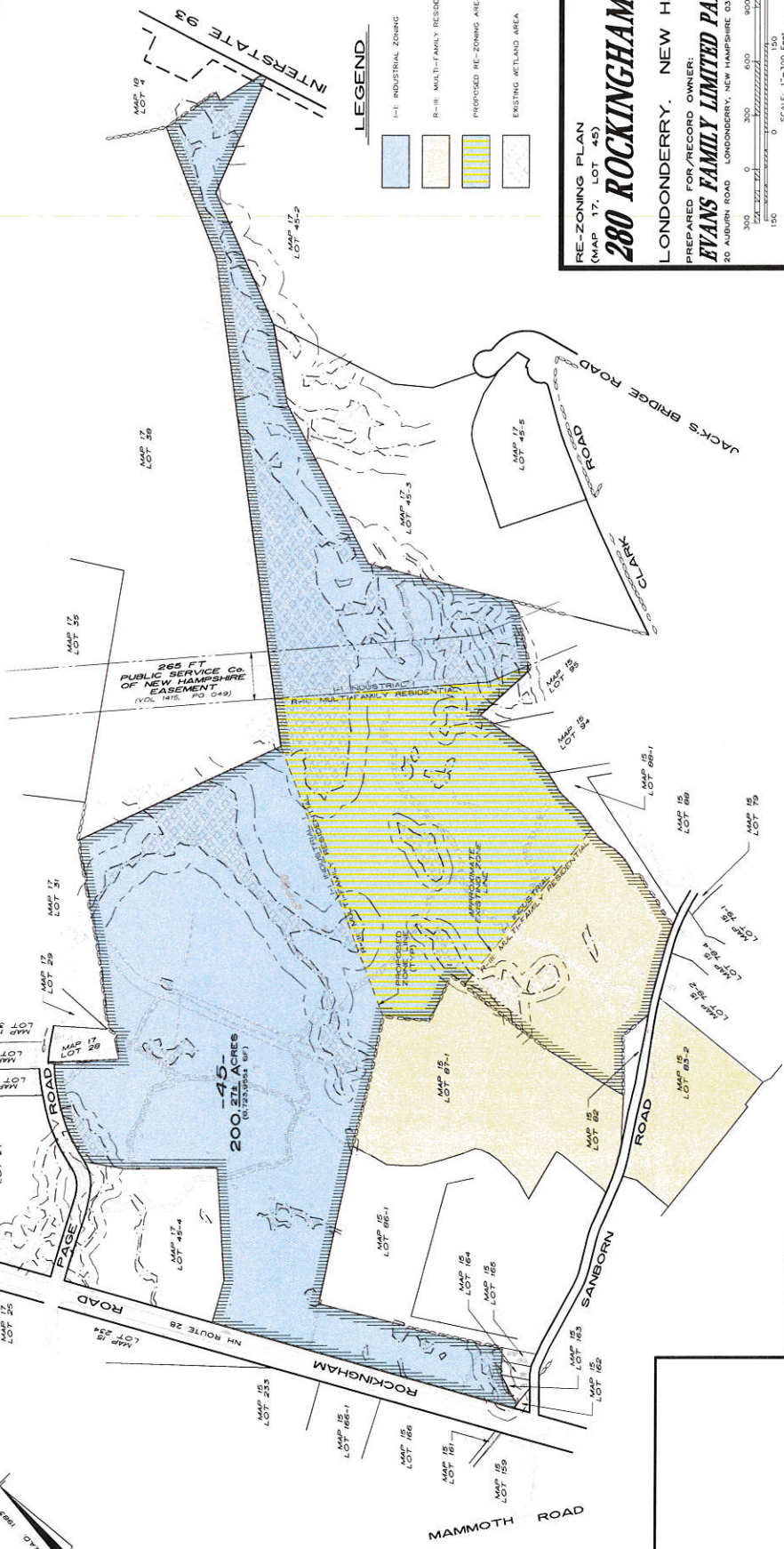
Sharon Farrell
Town Clerk

(TOWN SEAL)

A TRUE COPY ATTEST:
XX/XX/XX

NOTES:

1. TOTAL SITE AREA: 200.271 ACRES (8,723,954 SF)
2. PRESENT ZONING: I-1 INDUSTRIAL (179.4 ACRES)
R-II MULTIFAMILY RESIDENTIAL (20.87 ACRES)
3. PURPOSE OF PLAN: TO RE-ZONE A PORTION OF THE SITE (47.31 ACRES)
FROM ZONE I-1 INDUSTRIAL TO R-II MULTIFAMILY RESIDENTIAL
4. OWNER: HESI, LLC
MAP 17, LOT 45
EVANS FAMILY LIMITED PARTNERSHIP
LONDONDERY, NH 03053
BK 5643 PD 1587



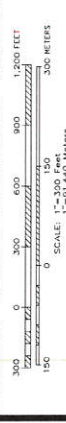
LEGEND

- I-1 INDUSTRIAL ZONING
- R-II MULTIFAMILY RESIDENTIAL ZONING
- PROPOSED RE-ZONING AREA
- EXISTING WETLAND AREA

RE-ZONING PLAN
(MAP 17, LOT 45)

280 ROCKINGHAM ROAD

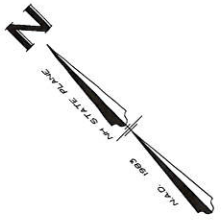
LONDONDERY, NEW HAMPSHIRE
PREPARED FOR/RECORD OWNER:
EVANS FAMILY LIMITED PARTNERSHIP
20 ALBURN ROAD LONDONDERY, NEW HAMPSHIRE 03053 (603) 434-7911



28 DECEMBER 2015

HESI
Hayes/Swanan, Inc.
121 Main Street
Londonderry, New Hampshire 03053
Tel: 603.434.7911 Fax: 603.434.7912
www.hesinc.com

FIELD BOOK 1730 DRAWING NAME: 4537_RZ_1728
DRAWING LOCATION: 2, VAST/DOWN/4537
DATE: 12/28/15
BY: J.S.P.
CHECKED: J.S.P.
SCALE: 1" = 300' 1" OFF 1
SHEET NO.: 1 OF 1





Town of Londonderry

Planning & Economic Development Department

268B Mammoth Road
Londonderry, New Hampshire 03053
Phone (603) 432-1100 x134
www.londonderrynh.org



NOTICE OF DECISION

The Londonderry Planning Board held a meeting on February 3, 2016 to consider the following:

Public Hearing to consider a request to rezone a portion of Tax Map 17 Lot 45 near Sanborn Road from Industrial I (Ind-I) to Multi-Family Residential (R-III) at 280 Rockingham Road, Evans Family Limited Partnership (Owner and Applicant).

The Planning Board took the following action:

The Board passed a motion to recommend to the Town Council to approve the rezoning of a portion of Map 17 Lot 45, currently zoned Ind-I (Industrial I) to the R-III (Residential – III) zoning classification, which is consistent with zoning on the same lot and in the immediate area and adjacent to the parcel.

Vote on the motion: 7-0-0.

This notice is given pursuant to RSA 676:3.

Londonderry Planning Board



**Town of Londonderry
Planning and Economic Development Department**

268B Mammoth Road
Londonderry, NH 03053
Phone 603.432.1100 x 134
www.londonderrynh.org

To: Town Council
CC: Building Department
From: John Vogl, GIS Manager | Comprehensive Planner
Date: February 22, 2016
Subject: **Rezoning Recommendation from the Planning Board
Map 17 Lot 45**

On February 3, 2016, the Planning Board held a public hearing relative to the Zoning Ordinance and Zoning Map.

The Planning Board, by unanimous vote, recommends to the Town Council to approve rezoning a portion of Tax Map 17 Lot 45 near Sanborn Road from Industrial I (Ind-I) to Multi-Family Residential (R-III) at 280 Rockingham Road.

The proposed rezoning is for a 200 acre split-zoned parcel with frontage on Rockingham Road, Sanborn Road and Page Road. The applicant is requesting that a portion of Map 17 Lot 45, currently zoned (Industrial I) be rezoned to R-III (Residential III), which would expand the area of the lot currently zoned R-III with frontage on Sanborn Road to the limits as identified on the attached plan prepared by HSI for Evans Family Limited Partnership, dated December 28, 2015. The area identified for the zoning change is isolated within the larger industrial zoned area of parcel by extensive natural and man-made features. By rezoning this piece to R-III, opportunities for reasonable development are increased for that portion of the lot with Sanborn Road frontage. There are two adjacent parcels zoned R-III on Sanborn Road, so the re-designation is consistent with the zoning in the area.

A copy of the application, a map of the proposed rezoning, staff recommendation to the Planning Board, and the Planning Board minutes are included in the packet.

Please feel free to contact Planning and Economic Development Staff if you have any questions.

Hayner/Swanson, Inc.
 Civil Engineers/Land Surveyors
 Three Congress Street, Nashua, NH 03062-3399
 Tel (603)883-2057 Fax (603)883-5057

LETTER OF TRANSMITTAL

To:
 Londonderry Planning Dept.
 268B Mammoth Road
 Londonderry, NH 03053

Date: 1/8/16	Job #: 4307-RZ
Attn: John Vogl	
RE: Proposed Re-zoning	
Page Road (Map 17, Lot 45)	
Londonderry, NH	

- WE ARE SENDING YOU** Attached Under separate cover via _____ the following items:
- Shop drawings Prints Plans Samples Specifications
 Copy of letter Change order Certificates

COPIES	DATE	NO.	DESCRIPTION
1	1/8/16	--	Re-zoning Application
1	1/7/16	2085	Check for \$448.00 submittal fee (\$40.00 plus \$12.00/abutter x 34 abutters)
1	1/7/16	--	Abutter list / mailing labels
1	12/28/15	1 of 1	Color Re-zoning Plan

THESE ARE TRANSMITTED as checked below:

- For approval Approved as submitted Resubmit ____ copies for approval
 For your use Approved as noted Submit ____ copies for distribution
 As requested Returned for corrections Return ____ corrected prints
 For review and comment _____
 FOR BIDS DUE _____, 19____ PRINTS RETURNED AFTER LOAN TO US

REMARKS: John – the above-listed materials are submitted for the next available Planning Board and Town Council hearings.

cc: Charlie Evans, Evans Family L.P.

Sincerely,

 Earle D. Blatchford
 Senior Project Manager



TOWN OF LONDONDERRY
Community Development Department
Planning & Economic Development Division



268B Mammoth Road
 Londonderry, New Hampshire 03053
 Phone: (603) 432-1100, x134 Fax: (603) 432-1128

REZONING APPLICATION

Name of Applicant: Evans Family Limited Partnership

Name of Lot Owner: Evans Family Limited Partnership *Chad Lee G.P.*
 (if different)

Address: 20 Auburn Road, Londonderry, NH 03053

Telephone #: (603) 434-7911

Date Submitted: _____

Tax Map # 17 Lot # 45
 (Please list all if multiple lots are involved)

Current Zoning: R-III & IND-I

Proposed Zoning: R-III & IND-I

Please explain the purpose and justification for your rezoning request (attach additional sheets if necessary):

Lot 45, Map 17 is presently a split zone lot, with that portion nearest (and fronting on) Sanborn Road being zoned R-III Multi-family Residential and the balance of the property being zoned IND-I Industrial. It is proposed to rezone a portion of the lot from IND-I to R-III, as shown on the attached Re-zoning Plan. The portion of the property proposed to be re-zoned has natural and man-made barriers which act to segregate it from those portions of the property proposed to remain IND-I. To the northeast there is a 266 ft. wide PSNH easement and most of that portion of the property is wetlands and wetland buffers, with limited development potential. To the northwest the land is separated by wetlands and topography. That portion of the site abuts other industrial and commercial lots and is better suited to industrial and commercial uses, with access via Page Rd. to Rockingham Rd. (NH Rte.102). The area proposed to be re-zoned is contiguous with the R-III zoned land which is adjacent to two other R-III properties (Map 15, Lots 83-2 and 87-1).

Planning Department Comments (to be filled in by Town Staff):

ABUTTER LIST

Job No 4307-RZ

January 7, 2016

Map	Lot No.	Name & Address
<i>OWNER(S):</i>		
17	45, 45-3, & 45-4	Evans Family Limited Partnership 20 Auburn Road Londonderry, NH 03053
<i>ABUTTERS:</i>		
15	78-2	Russell Pickering 36 Sanborn Road Londonderry, NH 03053-2317
15	78-4	Kathleen Pickering 36 Sanborn Road Londonderry, NH 03053-2317
15	79	Kelly & Loren Brunet 47 Sanborn Road Londonderry, NH 03053
15	79-1	Brian Bubelnyk 29 Clark Road Londonderry, NH 03053
15	82	Ledoux Family 2014 Trust Robert W. & Jane M. Ledoux, Trustees 840 Miramar Terrace Belmont, CA 94002
15	83-2	Town of Londonderry 268B Mammoth Road Londonderry, NH 03053
15	86, 86-1	Londonderry School District School Administration #12 268B Mammoth Road Londonderry, NH 03053
15	87-1	Pristine Properties Londonderry, LLC 289 Pine Street Manchester, NH 03103
15	88	Loren & Kelly Brunet 47 Sanborn Road Londonderry, NH 03053

15	88-1	Christopher Evans 51 Sanborn Road Londonderry, NH 03053-2318
15	94	Kevin J. Hill 41 Clark Road Londonderry, NH 03053
15	95	Paul Ranberg 43 Clark Road Londonderry, NH 03053
15	153C	Willow Springs Condo Association c/o Prose Management 76 Pine Street Ext. Nashua, NH 03060
15	159	DeCarolis Realty Trust c/o Mario G. DeCarolis, Trustee 3 Sanborn Road Londonderry, NH 03053-2119
15	161	City of Manchester One Airport Road, Suite 300 Manchester, NH 03103
15	162	New Hampshire Dept. of Transportation PO Box 483 Concord, NH 03301-0483
15	163	Thomas & Traci Biron 9 Sanborn Road Londonderry, NH 03053
15	164	James F. Conner 11 Sanborn Road Londonderry, NH 03053
15	165	Louise L. LaCourse 13 Sanborn Road Londonderry, NH 03053
15	166	Bailey-Franklin Realty Co., LLC c/o Amy D'Alessandro 21 Seneca Road Woburn, MA 01801
15	166-1	Sandra Pagano P.O. Box 609 Shirley, NY 11967

15	233	William O. Merrill Revocable Trust c/o Kenneth R. Merrill & Successors, Trustees 569 Mammoth Road Londonderry, NH 03053
15	234	Evans Family Limited Partnership 20 Auburn Road Londonderry, NH 03053
17	27	Evans Family Limited Partnership 20 Auburn Road Londonderry, NH 03053
17	27-1 & 28	Myrna Gregorio 19 Kelley Road Londonderry, NH 03053
17	27-2	Twenty Three Page Road Realty, LLC 23 Page Road Londonderry, NH 03053-2116
17	29	William J. & June L. Puglisi 41 Page Road Londonderry, NH 03053
17	30	William T. & Gladys A. White Living Tr. William T. & Gladys A. White, Trustees 29 Page Road Londonderry, NH 03053
17	31	Richard & Marjorie L. Glispin 34 Page Road Londonderry, NH 03053
17	35	Tammi M. Verani Rev. Trust, Tammi M. Verani, Trustee Giovanni M. Verani Rev. Trust, Giovanni M. Verani, Trustee 73 Page Road Londonderry, NH 03053
17	38	Jon D. Weigler & Margherita Verani 74 Page Road Londonderry, NH 03053
18	4	Earl G. Gazoulis 2081 Bodwell Road Manchester, NH 03103 Earle D. Blatchford Hayner/Swanson, Inc. 3 Congress Street Nashua, NH 03062-3301

TOWN OF LONDONDERRY, NEW HAMPSHIRE

Expenditures by Department
General Fund

January 31, 2015 - Unaudited - 58.3% of Fiscal Year

Description	Original Budget		Adjusted Budget		Expenditures		Enc.	Available Budget		%		Notes
	Budget		Budget		This Period	Year To Date		Budget		Expended		
Town Council	12,099		12,099		678	15,025		(2,926)		124.18%		PY payroll paid in FY 2016
Town Manager	632,140		630,140		24,722	343,058	3,251	283,831		54.96%		
Moderator	300		300		-	-		300		0.00%		
Budget Committee	1		1		-	-		1		0.00%		
Town Clerk	422,799		422,799		25,561	201,930		220,869		47.76%		
Supervisors of the Checklist	18,214		18,214		929	2,178		16,036		11.96%		
Finance	647,690		647,690		76,663	320,772		326,918		49.53%		
Personnel Health Insurance Holdings	(179,400)		(179,400)		(1,000)	(208,240)		28,840		116.08%		
Assessing	394,176		394,176		31,075	191,652		202,524		48.62%		
Information Technology	375,340		375,340		10,965	218,975		156,365		58.34%		
Legal Expenses	174,500		174,500		11,656	77,178		97,322		44.23%		
Zoning Board	49,485		49,485		3,354	26,964		22,521		54.49%		
General Government	506,514		506,514		29,724	210,706		295,808		41.60%		
Cemetery	32,974		32,974		530	20,732		12,242		62.87%		Seasonal Maintenance-Summer, Fall, Spring
Insurance - Property & Liability	244,652		244,652		3,656	177,579		67,073		72.58%		Annual premiums paid in full
Conservation Commission	3,300		3,300		111	762		2,538		23.09%		
Police	8,181,524		8,286,524		616,751	4,550,412	24,191	3,711,921		55.21%		
Fire	6,747,624		7,010,768		52,664	3,897,524	7,021	3,106,223		55.69%		
Building	329,219		331,219		26,383	194,695		136,524		58.78%		
Highway Administration	1,978,632		1,978,632		163,725	959,250	652	1,018,730		48.51%		
Highway Operations	1,240,882		1,240,882		70,853	389,577	85,492	765,813		38.28%		
Solid Waste-Waste Collection & Recycling	1,942,691		1,942,691		148,040	1,010,551		932,140		52.02%		
Social Services	53,864		53,864		5,640	43,524		10,340		80.80%		Most agencies paid in July, August
Welfare	121,268		121,268		4,676	32,286		88,982		26.62%		
Cable	276,799		276,799		16,679	139,000		137,799		50.22%		
Recreation	151,572		151,572		2,765	92,857		58,715		61.26%		One-time equipment purchase
Library	1,267,215		1,267,215		83,714	728,633		538,582		57.50%		
Senior Affairs	52,787		52,787		3,425	27,882		24,905		52.82%		
Community Development	384,333		374,333		21,873	189,812		184,521		50.71%		
Debt Service	2,514,318		2,514,318		216,180	2,335,601		178,717		92.89%		Bond due dates mostly in first half of fiscal year
Capital - Land & Land Improvements						49,999		-		#DIV/0!		
Capital - Vehicles, Machinery & Equipment	50,000		50,000					-		100.00%		
Capital - Buildings	720,000		720,000			600,000		120,000		83.33%		NOTE A
Capital - Other								-				
Transfer to Capital Projects Fund	295,000		323,000			323,000		-		100.00%		
Transfer to Capital Reserve Fund			3,412,421			3,412,421		-		100.00%		
Taxes Paid to County			53,616,277		3,750,000	32,575,000		21,041,277		60.76%		
Taxes Paid to School District												
Total Expenditures	29,642,512		87,057,354		5,401,992	53,151,295	120,607	33,785,452		61.19%		FY 2015 - 62.2% Expended

Note A:

Expendable Maintenance Trust Fund	100,000	100,000	-	100,000	-	100.00%	Transfers to trust fund in July
Roadway Maintenance Trust Fund	500,000	500,000	-	500,000	-	100.00%	Transfers to trust fund in July
Zoning Ordinance Re-write	120,000	120,000	-	-	120,000	0.00%	

TOWN OF LONDONDERRY, NEW HAMPSHIRE

Revenue by Source

General Fund-Fiscal Year 2016

January 31, 2016 - Unaudited - 58.3% of Fiscal Year

Description	Original Budget		Adjusted Budget		Revenue		Revenue		Revenue		Notes
	Budget	Budget	Budget	Budget	This Period	Year To Date	Year To Date	Due	Recvd	%	
Property Taxes											
Land Use Chant Tax	-	-	-	-	-	-	-	-	-	0.00%	
Yield Taxes	3,500	19,500	-	-	-	22,771	(3,271)	(3,271)	646,555	116.77%	
Payment in Lieu of Taxes	646,555	646,555	-	-	-	-	646,555	646,555	-	0.00%	Payment received annually in May
Excavation Taxes	10,000	11,700	-	-	-	11,747	(47)	(47)	-	100.40%	
Interest & Costs on Late Property Taxes	300,000	300,000	7,468	96,112	7,468	96,112	203,888	203,888	-	32.04%	
Business Licenses & Fees	70,000	6,000	39	2,160	39	2,160	3,840	3,840	-	36.00%	
Motor Vehicle Permits	6,250,000	6,300,000	849,378	4,124,938	849,378	4,124,938	2,175,062	2,175,062	-	65.48%	
Building Permits	225,000	400,000	13,650	380,831	13,650	380,831	19,169	19,169	-	95.21%	
Dog Licenses	17,000	16,000	144	2,504	144	2,504	13,496	13,496	-	15.65%	Dogs licenses due annually in April
Marriage Licenses	3,500	4,500	644	3,965	644	3,965	535	535	-	88.11%	
Reclamation Fees	16,000	16,000	1,480	9,115	1,480	9,115	6,885	6,885	-	56.97%	
Other Licenses and Permits	1,500	1,500	-	133	-	133	1,367	1,367	-	8.87%	
Meals & Room Tax	1,074,295	1,168,802	-	1,168,802	-	1,168,802	-	-	-	100.00%	
Highway Block Grant	504,841	569,118	113,824	455,294	113,824	455,294	113,824	113,824	-	80.00%	
Water Pollution Grant	44,236	41,569	-	41,569	-	41,569	-	-	-	100.00%	
Other State Grants	75,000	8,500	-	47,547	-	47,547	(39,047)	(39,047)	-	559.38%	
Zoning Review	30,000	30,000	1,065	37,168	1,065	37,168	(7,168)	(7,168)	-	123.89%	
Police Department	38,000	32,000	2,203	11,975	2,203	11,975	20,025	20,025	-	37.42%	
Fire Department	526,500	616,500	3,494	546,288	3,494	546,288	70,212	70,212	-	88.61%	
Public Works Department	85,000	87,000	1,718	65,905	1,718	65,905	21,095	21,095	-	75.75%	
Cable Department	325,000	375,000	-	238,133	-	238,133	136,867	136,867	-	63.50%	
Recreation Department	5,000	5,000	-	6,986	-	6,986	(1,986)	(1,986)	-	139.72%	
Senior Affairs Department	1,500	1,500	136	1,060	136	1,060	440	440	-	70.67%	
Interest on Investments	10,000	20,000	1,220	7,317	1,220	7,317	12,683	12,683	-	36.59%	
Insurance Reimbursements	50,000	50,000	-	3,529	-	3,529	46,471	46,471	-	7.06%	STD adn LTD booked as expenditure reduction
Other Miscellaneous Revenue	300,000	301,500	55,231	166,258	55,231	166,258	135,242	135,242	-	55.14%	
Transfers from Special Revenue Fund	415,000	415,000	-	-	-	-	415,000	415,000	-	0.00%	Transfers from SRF in June annually
Transfers from Capital Reserve Fund	384,500	384,500	-	300,856	-	300,856	83,644	83,644	-	78.25%	
Total Revenue	#####	#####	#####	7,752,963	1,051,694	7,752,963	4,074,781	4,074,781	#####	65.55%	FY 2015 -62.92 %

LONDONDERRY TOWN COUNCIL MEETING MINUTES

1
2 **February 1, 2016**

3
4 The Town Council meeting was held in the Moose Hill Council Chambers, Town Hall, 268B Mammoth Road, Londonderry,
5 NH.

6
7 Present: Chairman John Farrell; Vice Chairman Jim Butler; Councilors Tom Freda and Tom Dolan; Town Manager Kevin
8 Smith; Executive Assistant Kirby Wade; Absent; Councilor Joe Green

9
10 **CALL TO ORDER**

11
12 Chairman Farrell opened the meeting with the Pledge of Allegiance. This was followed by a moment of silence for all the
13 men and women who serve us here and abroad and all first responders and the men and women who serve us here and
14 abroad.

15
16 **PUBLIC COMMENT**

17
18 Chairman Farrell welcomed up Kenneth Gould, 3 Bittersweet Lane, who is the Chair of the Londonderry YMCA. Gould
19 stated that he was told that there is talk about getting a drug preventative program started in the community. Gould stated that
20 the mission of the YMCA is to help families and support communities. The YMCA is interested in collaborating with other
21 organizations and communities in helping create this program.

22
23 AL Baldasaro, 41 Hall Rd, stated that he got a call from one of his neighbors, Richard Belinsky, in regards to the situation
24 regarding a warrant article citizen petition. Baldasaro stated that after talking with the State, the Town didn't have a right to
25 shup the warrant article down. Baldasaro stated under Article 39.3, it stated "the Selectmen shall insert in their warrant for
26 such meeting the petitioned article with only such minor textual changes as may be required". Baldasaro referred to the Town
27 Charter where is brings you back to the State law. Baldasaro stated that he would just like to get the situation figured out for
28 one of the residents in the Town.

29
30 Christine Patton, 145 Mammoth Rd, stated that she wanted to introduce herself. She is a candidate running for the Budget
31 Committee.

32
33 Robert Cinelli, 9 Estey Rd, stated that he is here to address a wood cutting business being run out of his neighbor's house.
34 Cinelli stated that they have never gotten approval from the Town Council, Planning Board or neighbors. Cinelli stated that
35 he has tried selling his home by buyers have backed off based on the wood cutting business. Cinelli shared information with
36 the Council [see attached information and images]. Town manager Manager Smith stated that this information has been
37 passed along to the Town Attorney. The previous Code Enforcement Officer, Frank Holdsworth, had made a ruling that this
38 was an existing non-conforming use in a residential neighborhood. Attorney Ramsdell is looking at all of the documentation
39 on it to see if he agrees with that judgement. We are waiting for him to get back to us. Cinelli stated that he has signs posted
40 everywhere on his property line. Councilor Dolan asked Cinelli if he has spoken with the business owner to see if he can take
41 the signs down, etc. Cinelli stated that he has not.

42
43 Bonnie Hessey, 3 Estey Drive, stated that her property abuts the Potters business as well. Hessey stated that John Potter has
44 been harassing her family for years. Hessey addressed concerns she has with the business and business owner with the
45 Council. Hessey stated that he hasn't complied with the Ordinance. Chairman Farrell stated that she needs to voice her
46 concerns to the Police as well.

LONDONDERRY TOWN COUNCIL MEETING MINUTES

48 John Potter Sr., 211 Circle, Apt. 20 in Derry, stated that his business is at 5 Estey Drive, addressed a couple of the situations
49 Hessey addressed. Potter stated that right now he doesn't know what he can and can't do. [See all attached document for
50 letters passed around]. Hessey had stated that Potter had tried to run over her son. Potter stated that he plows and he doesn't
51 remember ever trying to run over her son. Potter discussed how he has been running his business. Councilor Freda stated that
52 the statements made by Hessey tonight are serious statements. Chairman Farrell suggested that the Council wait to get the
53 feedback from the Town Attorney and go from there.

54
55 Richard Belinsky, 89 Hall Rd, stated that he didn't find out that the petition warrant articles on the 18th until the 20th or 21st.
56 Belinsky stated that he watched the meeting and it was said that the Secretary of State's office was going to be contacted.
57 Belinsky stated that he spoke with David Scanlan at the Secretary's office who stated that he was never contacted from the
58 Town. Belinsky stated that he knows he missed the date. Belinsky stated that the Town Council has no way to say no to his
59 petition. Belinsky stated that if his petition can't get on, he's going to ask the Town Council to freeze the accounts for a year.
60 Councilor Dolan stated that the Town Charter says that the Town Council is the only body who can enact an Ordinance.

PUBLIC HEARING

61
62
63
64 Motion to move into Public Hearing made by Councilor Dolan and second by Vice Chairman Butler.

65
66 Chairman Farrell introduced Ordinance #2011-08 (A), a review and revisions to the Municipal Code, Title II, Chapters VI,
67 VII and X. Police Chief Bill Hart presented. There was no public comment. Motion to approve Ordinance #2011-08 (A)
68 made by Councilor Dolan and second by Vice Chairman Butler. Chair votes 4-0-0.

69
70 Motion to close Public Hearing made by Councilor Dolan and second by Vice Chairman Butler. Chair votes 4-0-0.

OLD BUSINESS

71
72
73
74 NONE

NEW BUSINESS

75
76
77
78 Chairman Farrell introduced Order #2016-06, the expenditure of Maintenance Trust Fund which was presented by Steve
79 Cotton. Vice Chairman Butler stepped down due to a conflict of interest. Motion to approve Order #2016-06 made by
80 Councilor Dolan and second by Councilor Freda. Chair votes 3-1-0.

81
82 Councilor Butler rejoined the Council.

BOARD/COMMITTEE APPOINTMENTS & RESIGNATIONS

83
84
85
86 NONE

APPROVAL OF MINUTES

87
88
89
90 Motion to approve the minutes from February 1, 2016 made by Councilor Freda and second by Councilor Dolan. Chair votes
91 5-0-0.

LONDONDERRY TOWN COUNCIL MEETING MINUTES

ADJOURNMENT

Motion to adjourn made by Councilor Dolan and second by Vice Chairman Butler. **Chair votes 4-0-0.**

Notes and Tapes by:	Kirby Wade	Date: 02 /01/2016
Minutes Typed by:	Kirby Wade	Date: 02/16/2016
Approved by:	Town Council	Date: 02/22/2016

DRAFT

92
93
94
95
96
97
98
99
100
101
102
103
104
105
106
107
108
109
110
111
112

TOWN COUNCIL MEETING 2/1/2016

WAS NOT AWARE OF WOOD CUTTING BUSINESS WHEN PURCHASED HOME

DICK POTTER HAD A SMALL BUSINESS

TODAY THAT BUSINESS IS RUN BY HIS SON JON POTTER WHO HAS TURNED IT INTO A LARGE COMMERCIAL BUSINESS

JON DOES NOT LIVE AT 5 ESTEY DRIVE ONLY WORKS THERE

30 HIGH GRAPPLE LOADS OF WOOD AND SCORES OF CUT AND SPLIT WOOD READY FOR SALE

OPERATING AN ILLEGAL COMMERCIAL BUSINESS IN A RESIDENTIAL AREA WITH NO PERMIT AND IS NOT GRANDFATHERED

HAVE A LETTER FROM THE TOWN STATING THAT THE BUSINESS IS NOT GRANDFATHERED (INCLUDED)

NEVER WENT IN FRONT OF TOWN COUNCIL FOR APPROVAL

NEVER WENT IN FRONT OF THE PLANNING BOARD

NEVER GOT APPROVAL FROM NEIGHBORS OR ABUTTERS

NO SPECIAL EXEMPTION ISSUED FOR COMMERCIAL WOOD CUTTING BUSINESS

HOURS RESTRICTED FROM 8 AM TO 4 PM. HAVE NOT CHANGED FROM LETTER BY MR FRANK HOLDSWORTH COMPLIANCE OFFICER IN 2008 TO LETTER FROM MR RICHARD CANUEL SENIOR BUILDING INSPECTOR IN 2015.

DICK POTTER RAN BUSINESS YEARS BEFORE SON TOOK OVER

DEVALUED MY PROPERTY VALUE AND MY NEIGHBORS INCLUDING IMPACTING HOMES ON CHASE ROAD WHICH IS BEHIND 5 ESTEY DRIVE

NEGATIVELY IMPACTED FAIR MARKET VALUE OF MY HOME

APPEARANCE OF 5 ESTEY DRIVE LOT ALSO DECREASES VALUE OF OTHER
PROPERTY ON ESTEY DRIVE

DUMPSTER, COVER IT, TRASH IN YARD SEEN FROM MY PROPERTY (PICTURES
INCLUDED)

BUYERS HAVE BACKED OUT OF MAKING OFFERS TO BUY AND BACKED OUT OF
PURCHASE AND SALES AGREEMENT BECAUSE OF THIS COMMERCIAL BUSINESS

HOME-BASED BUSINESS ZONING LAWS WERE NOT ADHERED TO (INCLUDED)

* NO TRESPASSING SIGN POSTING HAS TURNED THE PROPERTY INTO A EYESORE BY
USING MORE SIGNS THAN ARE NESCESSARY

LOOKING FOR ZONING ORDINANCE TO PROHIBIT COMMERCIAL WOOD CUTTING
BUSINESS ON ESTEY DRIVE

December 8, 2015

Residents of Estey Dr. Londonderry, NH

RE: Wood cutting business at 5 Estey Drive

Dear Neighbor,

I am writing this letter to inform you of the difficulties I am facing with regards to the sale of my property and the obstacles you may face in the future if we do not remedy this situation.

As you know we have been trying to sell our house for over 3 years now. The last 3 months we have listed with Keller Williams and have shown our home over 70 times. During this period we had 3 offers that were pulled when the people realized there was a wood cutting business next door. These 3 offers do not account for the offers that may have been made if this nuisance was not present.

Per comparable properties that were sold in the vicinity, the original list price of our home was \$379,000. When no offers were generated, we dropped the price as low as \$328,900 feeling the lack of offers may be due to present market conditions and the lack of buyers. The latest offer came in at \$300,000 and we ultimately settled on a price of \$310,000 (this price is well below comparable sales but we were willing to take it).

Upon inspection of the property, the potential buyers noticed the noise that was created by the neighboring business and since one of the buyers worked at home during the day, the noise was just too much for him to deal with.

We have gone to the town to see if something could be done but they stated that the business is grandfathered. They will do nothing. In 2005 a complaint was made by one of our neighbors (enclosed) which limited the times and days that this business can be in operation. But this only limits the business hours and not the business. On a daily basis, the operation of the business is to abide by this requirement. Does it?

The current business environment has progressed over time and many people work remotely (especially in suburban towns like Londonderry) and as this business is "grandfathered in", the town is not taking this new work environment into their consideration. We feel they need to.

Other than the decline in property values due to this business in a residential neighborhood, there are other important considerations that must be addressed. We feel the business here is also a fire hazard, and a safety hazard and potentially health hazards . What would happen if your child or one of their friends was injured on the property? What if the dry wood on the property caught fire? How is this noise over the acceptable decibel level effecting your hearing and the hearing of your children? These factors are cutting into your property values and if we do not remedy this situation, the values of your property in close proximity to this business will continue to be below that of your neighbors.

I am writing this letter to inform you that you too may face these same problems if you try to sell your house. Perhaps if we act as a group the town will have to listen as there are power in numbers and if approached enough, the city will have to listen. Let's band together

and fight this problem for our values, our health and the future of Estey Dr.

I am still going to pursue the town by bringing to their attention the nuisance created by this business in a residential neighborhood. I am also going to file for a tax abatement. I think all of you in the neighborhood should do the same. Perhaps if the town has to grant a decrease in their income, they will finally see that this business is a nuisance to everyone and if they start to lose income, they will finally take action.

I would also request that all of the neighbors receiving this letter to document the nuisance. At what times is the business operating? Do you smell any foul odors from the equipment being used in this everyday business? Is there ever an increase in the noise level that affects your right to quiet enjoyment of the property? Collectively, if we work together, maybe something can be done. Feel free to contact me if you would like to work together to end this situation.

Thank you for your consideration,

Robert Cinelli


9 Estey Dr.



TOWN OF LONDONDERRY
Building, Health & Zoning Enforcement

268 Mammoth Road
Londonderry, New Hampshire 03053
432-1100 ext. 115 Fax: 432-1128

February 9, 2015

Mr. Richard Potter
5 Estey Drive
Londonderry, NH 03053

Re: Timber / Cordwood Activity @ 5 Estey Dr., Londonderry, NH Map 3 Lot 3

Dear Mr. Potter:

The purpose of this letter is to inform you that this office continues to receive complaints regarding the disturbance your wood processing activity is causing the neighborhood.

If you recall, this matter was addressed a number of years ago by our former Code Enforcement Officer (CEO) in response to the same complaints. In a letter to you from the CEO, dated August 18, 2008, he agreed at that time to allow you to continue the cordwood business, provided you adhered to specific hours of operation. The letter stated that both you and Jon Potter agreed to limit activities to **8AM to 4PM Weekdays, 9AM to 1PM Saturdays (for out-going deliveries only)**, and **No operation on Sundays**. The CEO also warned you of possible civil penalties for non-compliance. That letter is enclosed for your reference.

I must inform you that there is a misconception that the cordwood business is a "Grandfathered" use on your property. For the business to be considered grandfathered, the wood-cutting activity had to exist before the adoption of the zoning ordinance in 1963. I can find no record that establishes any use of the property whatsoever prior to 1963. Therefore, this use is not in compliance. However, considering that a determination was made by the prior CEO to allow the business to continue, the concern for the cordwood use relates to the restricted hours of operation.

Therefore, you are hereby reminded of your obligation to comply with the previously agreed upon hours of operation. You shall immediately refrain from any wood processing activity outside of those established hours of operation. This shall include: no delivery of timber before or after hours; no wood-cutting or wood-splitting on site before or after hours; no loading or delivery of cordwood before or after hours.

Should this office receive any similar complaints after this date, you shall be cited for violation. Be advised that violation of the ordinance is considered a misdemeanor for which you may be subject to a civil penalty in the amount of \$275 for the first offense and \$550 for subsequent offenses for each day the violation continues after the date of this written notification, in accordance with the State Statute RSA 676:17.

Mr. Richard Potter
February 9, 2015
Page 2

If you have any question, please do not delay in contacting my office. Your understanding and cooperation is greatly appreciated.

Sincerely,

A handwritten signature in black ink, appearing to read "R. Canuel". The signature is written in a cursive style with a large initial "R" and a long, sweeping underline.

Richard G. Canuel
Senior Building Inspector
Code Enforcement Officer





POSTED

POSTED