

# Lee Town Crier

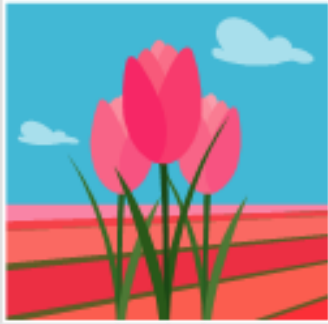
Established in January 1970

Volume 70

Coordinator: Dawn Hayes

SPRING 2013 (April, May & June)

Typesetting, Layout & Design: Dawn Hayes



## TOWN of LEE ELECTION RESULTS

**Selectman – CAROLE DENNIS**

**Treasurer – BENJAMIN GENES**

**Library Trustees –  
KATRINKA PELLECCIA  
CYNTHIA GIGUERE-UNREIN**

**Cemetery Trustees – JANICE NEILL**

**Trustees of the Trust Fund –  
SCOTT BUGBEE**

**Advisory Budget Committee  
For 3 years – PAT BARBOUR  
For 3 years – SCOTT BUGBEE**

**Article 2  
(Zoning Amendment)- PASSED**

**Article 3  
(Race Car Driving School)- **FAILED****

**Article 4  
(Operating Budget)- PASSED**

**Article 5  
(Capital Reserve Trust Funds)- PASSED**

**Article 6  
(Grass Field at Little River Park)- PASSED**

**Article 7  
(Police Cruiser)- PASSED**

## OYSTER RIVER COOPERATIVE SCHOOL DISTRICT RESULTS

**Moderator – RICHARD LAUGHTON**

**School Board At Large –  
THOMAS NEWKIRK  
KENNETH ROTNER**

**Article 3 –** Shall the District vote to approve the Collective Bargaining Agreement between Oyster River Education Support Personnel Association and the ORCSD?  
**PASSED**

**Article 4 –** Shall the district raise and appropriate \$40,000 for the purpose of supporting initiatives requested by the Oyster River Sustainability Committee?  
**PASSED**

**Article 5 –** Shall the district vote to authorize the retention of year-end unassigned general funds not to exceed 2.5% of the current fiscal year's net assessment?  
**PASSED**

**Article 6 –** Shall the district raise and appropriate an operating budget, not including appropriations by special warrant article and other appropriations voted separately, totaling \$38,815,855?  
**PASSED**

**CONGRATULATIONS  
TO ALL  
NEWLY ELECTED OFFICIALS!**



### LEE POLICE

The Lee Police Dept. welcomes its newest officer, Mark Pierce! Pierce served in the U.S. Air Force and will be attending the Police Academy in June.

Originally from Gloucester, MA, he spent five years served in the Air Force in security forces and the thought of joining law enforcement has been an ongoing one over the years.

Pierce will go to the academy in June and finish in September. Until then, he'll do field training with other officers. Once he's completed three months of training at the Police Academy, Pierce will patrol the roads on his own.

### DISPOSAL of PRESCRIPTION DRUGS

A drop-off box for unused and unwanted prescription drugs provides Lee residents a safe way to dispose of medications.

Unwanted/unused prescription drugs may be dropped off anytime at the Public Safety Complex at 20 George Bennett Road.



### LAMPREY RIVERS ADVISORY MANAGEMENT PLAN - 2013

The original Lamprey River Management Plan was written in 1995 and was an ambitious undertaking. In 2007, a revision was completed and has served as the guiding document for the Lamprey Rivers Advisory Committee's activities. With the addition of ten new towns represented in LRAC, the need for another revision was clear. The committee is hard at work adding new projects, adjusting focus areas, and seeing an even bigger picture that covers the 212 square miles that comprise the Lamprey River drainage area.

New Hampshire RSA 483, which created the Rivers Management and Protection Program, lists the creation of an advisory management plan as one of the duties of a local river advisory committee such as LRAC. The committee is making good progress and a draft version will be available for review shortly at [www.lampreyriver.org](http://www.lampreyriver.org) as well as at the town halls for the fourteen towns. If anyone has comments or suggestions, please forward them to LRAC Chair Mike Russo, at [M.Russo@dover.k12.nh.us](mailto:M.Russo@dover.k12.nh.us), or Outreach Chair Sharon Meeker, at [s-meeker@comcast.net](mailto:s-meeker@comcast.net) or at 659-5441.

### TOWN REPORTS

The 2012 Annual Town Report is NOW available! You may pick up a copy at the Town Hall, the Public Safety Complex, the Transfer Station or the Library. You may also view it online at [leenh.org](http://leenh.org).

## RAYMOND REGATTA and FAMILY FUN DAY

co-sponsored by Raymond Recreation, the Lamprey Rivers Advisory Committee, and the Lamprey River Watershed Association.

Are you are serious canoeist or kayaker? Are you serious about making a silly boat? Have we got a deal for you! Join us on **Saturday, June 1 from 10:00 am – 4:00 pm** at the Raymond Regatta and Family Fun Day. For the serious folks, the race will put you on the fast track to fame and glory. For the silly sailors, we hope your home-made, non-motorized boat will hold together and get you back to shore dry so that you, too, can bask in the glory of infamy.



In addition to the regatta, plenty of terrestrial events are planned for you landlubbers: Canoe safety without the fear of getting wet; cast for fishy prizes; try your hand at tying fly-fishermen flies; plenty of active games; learn about aquatic insects, local fish, watersheds, and reptiles.

**Watch for further details in the E-Crier and at [www.lampreyriver.org](http://www.lampreyriver.org)**

## FROM THE TOWN CLERK

### 2013 Dog Tags now available!

Deadline to register is April 30<sup>th</sup>. Please present a copy of your dog's Rabies vaccination certificate.

If you have spayed or neutered your dog, please present proof of this as well.

## CODE ENFORCEMENT OFFICER RETIRES

Lee's Code Enforcement Officer, Allan Dennis is set to retire this month. Allan was first employed by the town in 1975 as a part time Patrolman; he has been the Code Officer since 1987. The town would like to thank Allan for his many years of service and wishes him the very best in his retirement!



## BACKYARD FARMING INITIATIVE

The Backyard Farming Initiative is sponsored by the Lee Agricultural Commission to foster a greater understanding and participation in, the Town's long history of farming activities and life skills. The mission is to provide understanding and appreciation to young and old of the unique characteristics of our existing working landscapes here in Lee. The Backyard Farming Initiative has hosted many hands-on, neighbor-to-neighbor lectures, demonstrations, and round table discussions designed to provide participants with easy to understand information.

The Backyard Farming Initiative wants to hear from you! Do you have a question that our panel of experts can assist you with? Do you have an idea for a workshop? Are you involved in Lee's long tradition of working landscapes and would be willing to share your experiences & knowledge? Please contact us at [bfi@leenh.org](mailto:bfi@leenh.org).

## LEE HISTORICAL SOCIETY

**SPRING PROGRAMS** Co-hosted by the Lee Historical Society and the Lee Public Library.

**“The Mills of Lee” by Randy Stevens**  
**Wednesday, April 3, 7:00 pm**  
**Public Safety Complex**

Randy has completed the project started by Dick Wellington. He will discuss the water-powered mills located in Lee from 1657 to 1934. His presentation will include historic pictures!

### ANNUAL MEETING

**POT LUCK SUPPER/SHOW AND TELL**  
**Friday, April 12th, 6:00 pm**

**Jeremiah Smith Grange**

You are invited to the Annual Meeting and pot luck supper. There will be great food, so plan to bring a good appetite. You will learn about our plans for 2013. Anyone interested in our mission of preserving Lee’s history is welcome. Dues are only \$5.00. Contributions are always welcome.

This is your opportunity to “Show and Tell” - share something old that is special to you. You may also bring a “What’s this?” It may be just one item, or a collection. It should be an evening of fun and surprises!

### SEE LEE’S HISTORY COME ALIVE

We are planning to reschedule a “Living-history event” for early June at Ye Old Parish Cemetery on the corner of Mast Road and Garrity Road. You will learn about the people of Lee during the 18th century. **CALLING ALL ACTORS AND ACTRESSES: adults and college or high school students!** Please contact

Phyllis (659-2883) or Jan (292-6143), if you would like to take part in this exciting event.



### MUSEUM EXTENDED HOURS

The Lee Historical Society Museum will be open 10:00 am - 2:00pm on the third Saturday of each month from April to November. **Please visit us this spring on April 20, May 18, and June 15.** We are in the process of creating new exhibits. Please notify Phyllis White (659-2883), or Jan Allen (292-6143), if you are able to help us with these extended hours.

### CHANNEL 13

Check your local TV channel 13 to view Selectmen’s meetings aired daily at 7:00 am; 2:00 pm; 7:00 pm.

## BAHAIS OF LEE

The Bahá'í community in Lee was established in 1985. All events are free and open to all. Email us for more information [bahaisofleenh@gmail.com](mailto:bahaisofleenh@gmail.com).

### Devotional Gatherings

The Bahá'ís of Lee hold simple prayer meetings on the first and third Sundays of each month, from 11:00 to noon (with time for chatting). Call Marty and Wendy at 988-7107 for details.

**April** - 7<sup>th</sup> and 21<sup>st</sup>

**May** - 5<sup>th</sup> and 19<sup>th</sup>

**June** - 16<sup>th</sup> (we're taking June 2 off)

### Holidays and Holy Days

First Day of Ridván: Sunday, April 21, at 4:00 pm in Epping. RSVP: Mike and Rose at 679-5575.

Ninth Day of Ridván: Sunday, April 28, at 7:00 pm in Lee. RSVP: Marty and Wendy at 988-7107.

Twelfth Day of Ridván: May 2<sup>nd</sup>

Declaration of the Báb: May 23<sup>rd</sup>

### Other events

Saturday, April 6, at 7:00 pm

A showing of the DVD "The Hungry Tide" about Kiribati, the Pacific nation that may become the first nation forced to move due to global warming. RSVP: Marty and Wendy at 988-7107.

Early May

A showing of the DVD "Bag It!" about an average guy who makes a resolution to stop using plastic bags at the grocery store. Offered in cooperation with the Friends (aka Quakers) of Dover.

### Bahá'í Study Group

Beginning on June 29, in Lee.

"Reflections on the Life of the Spirit" is a Bahá'í study book that covers "Understanding the Bahá'í Writings," "Prayer," and "Life and Death." Come study and discuss the life of the spirit in a small group setting, with a focus on spiritual empowerment and service to humanity. Call 988-7107 to RSVP.

**For more information:** Feel free to email us at [bahaisofleenh@gmail.com](mailto:bahaisofleenh@gmail.com).



## ADDRESS CHANGES

The Town recently underwent a series of Public Hearings regarding address changes, as a result of a thorough review by Lee's Emergency Management Team and the State's Bureau of Emergency Communication (E911).

The goal was to promote accurate emergency responses to all Lee Residents by eliminating confusing, redundant and inconsistent street names and addresses.

For a complete list of all the changes please visit [leenh.org](http://leenh.org) under the Quick Links section on the home page.

## LEE PUBLIC LIBRARY

### Museum visits

Spring and summer is a great time to visit the museums with your families. We have the following discounted passes available thanks to the Friends of the Lee Public Library: Museum of Science, The Children's Museum of New Hampshire, Boston Children's Museum, Currier Art Museum, Isabella Stewart Gardner Museum, Museum of Fine Arts, and Strawberry Banke. The Seacoast Science Center pass is made possible thanks to the generosity of an anonymous donor.

### Digging into your family's past

There is a resource right here at the library that can help you do that! Ancestry.com will help you find census, birth, marriage, death, immigrant and travel records and more. This resource includes newspaper, historical stories, photos, maps and more. Join the ranks of other genealogists who have made use of this wonderful service.

### Keeping Costs Down

If you no longer receive magazine subscriptions like you used to be sure to take advantage our online service EbscoHost. EBSCOHOST is a collection of 15 online databases covering general interest, business and health resources, magazine and newspaper articles, available periodicals are available online 24 hours a day. Visit our website and click on Reference Databases to find it. Or stop by the library and check out one of our 66 individual subscriptions.

### Another way to keep costs down

The library is lucky to have a volunteer who comes into the library every week or so and updates the container holding coupons on everything you could ever need or want. She separates them by category and tosses the expired ones. Many already take advantage of this, you could too!

### Available For Loan

2 banquet tables  
2 Kindles  
1 Nook  
2 Pop-up tents  
1 telescope



Call 659-2626 to reserve!

### Are you an Artist or a Craft Person?

We would love to display your art on our tiny but visible space. This year alone we shared photography, quilts, fly tying, photography, fabric art, jewelry, lace, knitting and hand-painted wooden bowls trays using the Bauernmalerei folk art technique, just to name a few! Help beautify the library! Please give the library a call at 659-2626 and ask for Sharon or Cheryl.

## CLASSES, WORKSHOPS & EVENTS

### Lee's Historic Mills

Wednesday, April 3 7:00 pm

Public Safety Complex

Randy Stevens, presenter

Find out about the water-powered mills that used to flourish in Lee. Randy Stevens will share what his research yielded about the first mills in 1657 until the last mill ceased operation in 1934. He will present historic pictures of many of the mills, locations and explanations of the time frame, and type and activity of each mill at the twelve different sites. Hosted by the Lee Public Library and the Lee Historical Society.

### Knitting Get Together

Tuesdays in April, May & June

6:30-8:00 pm

Bring that project you've been meaning to finish, knit and make some new friends! This is not a class. Instructors are not present.



**Knitting Class for 50 and Older**  
**Every other Wednesday 9:00 am**

A drop-in group will meet every other Wednesday at the library. Instructor Donna Kay will help with your projects! All levels welcome. Call the library 659-2626 for dates. **Sponsored by the Senior Advisory Committee in conjunction with the Lee Public Library.**

**Book Sale**

**Saturday, April 6<sup>th</sup> 9:00 am – 2:00 pm**

All books are 6 for \$1 or 20¢ each. Some DVDs are now available. What a deal!

**Book Discussion**

***Sense of an Ending* by Julian Barnes**

**Monday, April 8<sup>th</sup> 7:00 pm**

All are welcome! “Exquisitely crafted, sophisticated, suspenseful, and achingly painful, *The Sense of an Ending* is a meditation on history, memory, and individual responsibility.” —*The Philadelphia Inquirer* **Winner of the 2011 Man Booker Prize**

**Babysitting Certification Class**

**Saturday, April 13<sup>th</sup> 10:00 am – 3:00 pm**

**Ages 12-15**

Taught by the McGregor Institute, this class is designed to certify kids who already are babysitting or wish to babysit. The care and feeding of infants, how to handle emergencies and the business aspect of babysitting will be addressed. Attendees will also be trained in CPR and First Aid and will receive certification in these areas.

**For ages 12-15**, this class takes place on **Saturday, April 13 from 10-3**. Please bring a lunch. Fee is \$35.00. **Register** by visiting [mcgregorems.org/institute/index](http://mcgregorems.org/institute/index)

**National Library Week**

**April 14<sup>th</sup> – 19<sup>th</sup>**

*Communities matter at your library*

“During **National Library Week** and throughout April, libraries of all types host special events to highlight the unique role libraries play in people’s lives. Today’s

libraries can help you and your family discover a new and exciting world through collections, digital resources and more. Whether you come for homework or job searches, help with citizenship issues or finances, adult education classes or to find the best books for young readers, libraries are a great place to spend quality time and connect with loved ones and friends.” ALA 2013

**Celebration of Poetry**

**Wednesday, April 17<sup>th</sup> 7:00 pm**

Come join other wielders of words in a fun evening of poetry! Read from the greats or read your own...come to listen or come to inspire! Happy National Poetry Month!



**“You Are What You Eat: Dairy & Eggs”**

**Monday, April 22<sup>nd</sup> 7:00 pm**

**Jeremiah Smith Grange, Lee**

Explore local dairy products, such as goat cheeses, raw milk, ice creams and the nutritional benefits of local range raised eggs. Learn about different cooking techniques on how to use these foods. Please call the library 659-2626 to register. **Sponsored by the Agricultural Commission and the Lee Library**

**Ticks and Illnesses They May Cause**

**Wednesday, April 24 7:00 pm**

Once the snow melts and the temperature goes above 45 degrees, the blacklegged ticks will be active. Find out how to manage ticks and reduce your risk of becoming a tick-borne disease victim. Dr. Alan Eaton, UNH Professor/Specialist, Entomology will talk about the three most important tick species in NH and their biology as well as the three major diseases they spread here. NH ranks 3rd in the nation for Lyme disease and is in the top 10 for Babesiosis and Anaplasmosis. Lee is in the area for highest risk for one of these diseases, possibly all three. Please call the library 659-2626 to register.

**TOE JAM PUPPET BAND  
APRIL VACATION EVENT**

**Thursday, April 25<sup>th</sup> 10:30 a.m.**

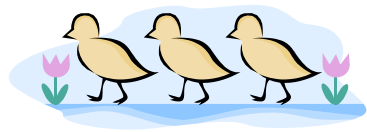
Join us on for a zany, wacky, over the top performance by Toe Jam Puppet Band. Be prepared to sing, dance and laugh the morning away! This program will be held in the multipurpose room of the Oyster River High School. **Co-sponsored by the Madbury, Durham libraries and the Lee Public Library.**

**PEEP! PEEP! PEEP!**

**Drop-In Craft**

**April 20<sup>th</sup> – 27<sup>th</sup>**

Stop by during vacation week and make some chicks, creeping and peeping in the fresh springtime grass!



**Join the Green Team!**

**Tuesday April 30<sup>th</sup> & Tuesday May 14<sup>th</sup>**

**6:00 pm**

Become part of the global warming solution. Join other Lee households and families to form a Green Team! We will meet for four to five sessions at the library where we will learn how to lower our carbon footprint and save energy and money using the workbook, "Low Carbon Diet". This fun, easy to use guide will show you step by step how to dramatically reduce your use of energy and how to calculate your CO2 emissions.

This workshop welcomes all, and families are especially encouraged to participate in eco-friendly strategies and discussion. Light refreshments will be served. Participants should expect to commit to attending most of the sessions. The first sessions are April 30 and May 14 from 6-7:30. Subsequent meeting dates will be set to accommodate the needs of the group. For further information call Noel Jost-Coq, at 292-5667. To register call 659-2626. **Sponsored by the Lee Public Library, and the Lee Energy Committee.**

**New Hampshire's One-Room Rural Schools:  
The Romance and the Reality**

**Wednesday, May 1<sup>st</sup> 7:00 pm**

**Lee Public Safety Complex**

Hundreds of one-room schools dotted the landscape of NH a century ago and were the backbone of primary education for generations of children from the early 19th century onward. These schools are revered in literature and lore, but were beset with problems, some of which are little changed in today's education environment. The greatest of these issues was the method of financing the local school and the vast differences in ability of taxing districts to support education. Steve Taylor will explore the lasting legacies of the one-room school era and how they echo today. **Hosted by the Lee Public Library and the Lee Historical Society. Made possible by a grant from the NH Humanities Council.**

**Henna Body Art Workshop - Teens**

**Saturday, May 11<sup>th</sup> 10:30 - noon**

Learn the history of henna body art as used in ceremony, ritual and medicine as well as the various designs used in different cultures. Learn how to mix henna and after choosing/creating a design, paint away! Taught by master herbalist and henna tattoo artist, Melissa Morrison, this workshop takes place on **For grades 7-12 - Please call the library 659-2626 to register. Please register by May 4.**

**Book Discussion**

***The Paris Wife* by Paula McLain**

**Monday, May 13<sup>th</sup> 7:00 pm**

Join this dynamic book group! Lively discussion every time! Pick up a book today. "[Paula] McLain has brought Hadley [Hemingway] to life in a novel that begins in a rush of early love. . . . A moving portrait of a woman slighted by history, a woman whose . . . story needed to be told."—*The Boston Globe* Winner-Best Historical Fiction-Goodreads Choice Awards



### **Barbershop Quartet "Whatever Four"**

**Wednesday, May 15<sup>th</sup> 7:00 pm**

"Whatever Four" Barbershop Quartet is composed of four members of the Dover Chapter of the Barbershop Harmony Society, the Seacoast Men of Harmony. They are, Peter McDonald, Greg Burdwood, Gary Wilbur and Dick Ferraro. In addition to singing with the SMH they get together to enjoy each other's company and sing songs in the uniquely American genre of the barbershop style. Barbershop singing is as American as jazz and baseball and uses a four note chord which is what makes it sound so unique.

### **Flock of Birds**

#### **Drop-In-Craft for children**

**Saturday, May 18<sup>th</sup> & May 25<sup>th</sup>**

Drop by the library and make a colorful flock of birds centerpiece for the dining room table!

### **"You Are What You Eat: Grains and Smart Shopping"**

**Monday, May 20<sup>th</sup> 7:00 pm**

**Jeremiah Smith Grange, Lee**

Explore the growing and use of local grain, its nutritional value and how to use this food in cooking new and old recipes. Also look at ways to shop smart using local farmers markets, CSA's and grocery stores. Please call the library 659-2626 to register.

**Sponsored by the Lee Agricultural Commission and the Lee Library.**

### **Device Advice**

**Wednesday, May 22<sup>nd</sup> 7:00 pm**

What kind of device do you have? Whether it is a Nook, an Ipad or a Kindle come share your questions and your answers! Please call the library 659-2626 and let us know which device you will be bringing.

### **Book Sale**

**Saturday, June 1<sup>st</sup>**

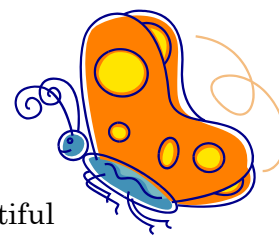
Stop by to see our newest treasures!  
Six books for \$1.00 or 20¢ cents each.

### **Beautiful Butterflies**

#### **Drop-In Craft**

**Saturday, June 8<sup>th</sup>**

Children may visit the library and make a beautiful butterfly to take home!



### **Book Discussion Group**

***Unbroken: A World War II Story of Survival, Resilience and Redemption***

**By Laura Hillenbrand**

**Monday, June 10<sup>th</sup> 7:00 pm**

Pick up a copy at the library today!

"A warning: after cracking open *Unbroken* you may find yourself dog tired the next day, having spent most of the night fending off sleep with coffee refills, eager to find out whether the story of Louis Zamperini, Olympic runner turned WWII POW, ends in redemption or despair.. In Hillenbrand's [hands], it's nothing less than a marvel—a book worth losing sleep over."—*The Washingtonian*

### **Fancy Nancy Extravaganza**

**Saturday, June 15<sup>th</sup> 10:30 am**

On Saturday, June 15 from 10:30-11:30 am, come listen to some great Fancy Nancy stories and then – get all fancy! Decorate a party purse, pick up some earrings and edible bracelets and have your nails done at the Manicure Maison! Enjoy some party refreshments, too! For ages 4-7. \*This program was rescheduled from an earlier date. If interested and not previously registered, please call 659-2626 to inquire about availability. (Previous event cancelled due to storm)

### **STORYTIME**

Story times are held on **Thursday and Friday mornings at 10:30**. These fun 30-40 minute programs include stories, songs, finger plays, flannel board and a craft. Registration is not required.

**May 16<sup>th</sup> & May 17<sup>th</sup>** will be the last programs for this school year.

## DOG DAYS AT THE LIBRARY

Read with a 4 footed friend! This program is dedicated to improving reading skills



of children using registered Pet Partner teams as literacy mentors. Between **3:30 and 4:30 pm**, children in **grades K-4** can read for 20 minutes with Carla Corey and her cocker spaniel, Holly on the **second Thursday of the month** or with Barb Brothwell and her French bulldog, Izzy on the **third Monday of the month**. Talk to a librarian and **sign up**.

## ROCKIN' READERS BOOK CLUB

For 5<sup>th</sup> and 6<sup>th</sup> graders, this club meets **the first Thursday** of each month from 3:00 – 4:00 pm. Participants will read and discuss a different book each month. Pizza will be served! Students may take **bus 8** directly to the library after school. If interested, **sign up** by calling 659-2626! **May 2<sup>nd</sup>** will be the last meeting for this school year.

## AFTER SCHOOL PROGRAM

The after school program for ages 6-10 is held on Tuesday afternoons from 3:30 – 4:30 pm. Children will be introduced to a variety of authors and award-winning books. A snack, games and a craft are included. Mast Way students may ride **bus 23** directly to the library after school. **Registration is required**. Call 659-2626. The last program for this school year is **May 14<sup>th</sup>**.

## ADULT SUMMER READING –GROUND BREAKING READS

**June 17<sup>th</sup> Registration begins**

**Ground Breaking Reads** is the Summer Reading theme for adults. Write very short

reviews (one or two sentences) of the books you read this summer to enter into our summer reading raffle!

Thank you to the Friends of Lee Public Library for encouraging all readers to read by providing fun prizes!

## SUMMER READING PROGRAM – DIG INTO READING

**June 17<sup>th</sup> Registration begins**

This year, the summer reading program is all about what's under the surface – underground and in the deep, deep sea! Burrowing creatures, pet rocks and so much more! So join us for a summer of great books and activities! Registration for this 6 week program begins on Monday, June 17 and is for children in preschool - grade 6.

## TEEN SUMMER READING – BENEATH THE SURFACE

**June 17<sup>th</sup> Registration begins**

Teens entering grades 7-12 may sign up for our teen summer reading program beginning Monday, June 17. Fill out a simple form for each book read and be eligible to win great prizes in weekly raffle drawings! Also, inquire about the special Comics Workshop where teens can explore the world of graphical storytelling with cartoonist Marek Bennett!



The need is constant. The gratification is instant. Give Blood:™

## RED CROSS BLOOD DRIVE AT LEE CHURCH

**Friday May 24<sup>th</sup> 1:00 – 6:00 pm**

Please donate if you are able.

Call for more information. 659-2861

## **SPECIAL WORSHIP SERVICES at LEE CHURCH CONGREGATIONAL**

**Earth Day Sunday – April 21<sup>st</sup>**  
8:30 & 10:30 am Worship Services

**Music Sunday – June 2<sup>nd</sup>**  
8:30 & 10:30 am Worship Services

**Christian Education Sunday – June 23<sup>rd</sup>**  
9:30 Worship Service

**On June 23<sup>rd</sup> we change to our summer  
schedule to One Service at 9:30 am.**

## **CHURCH SUPPERS**

Lee Church Congregational 17 Mast Rd  
**Saturday, April 13<sup>th</sup> 5:00 -7:00 pm**  
**Pork Supper**

**Friday, May 17<sup>th</sup> 4:30 – 7:00 pm**  
**Beef Stew/Mac & Cheese (Plant Sale Day)**  
Adults \$8, Seniors \$7, Kids under 12  
years old \$5

**Saturday, June 15<sup>th</sup> 3:00 pm - until  
SOLD OUT**  
**Chicken BBQ –Eat here or Take Out**  
Chicken BBQ \$8 each or \$5 for ½  
chicken.

## **MUSIC MINISTRY JUBILEE**

**Saturday, April 20<sup>th</sup> at 7:00 pm**  
Lee Church 17 Mast Road  
Join us for a celebration of music by Lee  
Church Choirs and Musicians.  
Donations appreciated - Refreshments  
available. This is a fundraiser for the  
Music Ministry of Lee Church  
Congregational. For info call 659-2861.

## **23RD ANNUAL LEE CHURCH PLANT SALE**

**Friday May 17<sup>th</sup> 4:00 -7:00 pm**  
Beef Stew Supper 4:30 – 7:00 pm

**Saturday May 18<sup>th</sup> 9:00 am - noon**  
Brunch! hosted by the Women's Guild

Plants of all varieties will be available;  
shrubs, small trees, perennials, herbs &  
vegetables. Selected to be perfectly  
happy to grow where we live! Master  
Gardeners will be on hand for  
conversation. Fresh stock available  
Saturday morning – come both days!  
Most selections have been locally grown.

Please email [leechurchucc@comcast.net](mailto:leechurchucc@comcast.net)  
or call 659-2861 with questions.



We use as many recycled pots as is  
possible. Pots should be left  
**outside the white shed at  
the rear of the Parish  
House garage.**

## **WILKINSON FOOD PANTRY**

Lee Church Congregational, 17 Mast Rd  
The food pantry is open to any family in  
the Town of Lee. The pantry is open the  
first and third Monday of each month  
from 6:00 - 7:00 pm.

If there is an emergency need please  
feel free to contact the Church office  
659-2861. All visits to the pantry are  
strictly confidential.

## TAI CHI CLASSES

There are many different styles of tai chi, but all involve slow, relaxed, gentle movements, each flowing into the next. The body is in constant motion, and practitioners focus on posture and deep breathing.

Tai chi teaches you to focus on simplicity, harmonize with unfolding events and to create a balance in your life.

Beginner class is Mondays at 9:00 am at Lee Church, come try your first class for free. Intermediate class is Wednesday at 9:00 am. For more information contact the Church office at 659-2861.

## LEE FARMERS' MARKET

**Thursdays 3:00 – 6:00pm**  
**June 6 through Sept**  
(possible May 30th opening)

The Market is located at the Old Fire Station: corner of Mast Rd (Rt. 155) and Recycling Center Rd.  
Market Master Dick Babcock 659-9329

Items will include: vegetables, cheese, bakery, honey, pork, lamb, canola oil, beef, flowers, crafts, soaps, fudge, eggs, pesto, garlic, seasonal fruits and plants!

Master Gardener on site with gardening info, music, and more!



## LEE VFW POST 10676

### Little River Park Celebration

The Post will again be coordinating the Memorial Day parade. Any groups who wish to participate should form at the town hall at 12:45 pm on Monday, May 27<sup>th</sup>.

Post members took up the flags from the Lee cemetery after Veterans Day and will put out the flags before Memorial Day.

We are always looking for new members so bring your DD214 to any of our meetings at 7:30 pm on the first Monday of each month at the Flag Hill Winery.

The Post is still collecting old, unserviceable flags to be disposed of. They may be dropped off at Flag Hill Winery during their business hours. We will have a flag burning this fall to properly retire them.

Dale V. Hardy  
Commander

## FISHING DERBY

**Saturday, May 11<sup>th</sup>**

Grab your fishing pole and come on down to the **Stevens Farm on Tuttle Road** for a fun morning of fishing. No license required if you are a youth participating in this event.

Prizes for the first fish caught, biggest fish, etc. Lines go in when the bell is rung at 9:00 am. Event ends at noon followed by a fish fry (hot dogs) at the Fire Station. Call town hall to register 659-5414.

## LEE POLICE DEPARTMENT

The Lee Police Department would like to remind everyone of some scams that may come your way. We have listed some of the most common scams. To obtain more information about scams visit [www.fbi.gov](http://www.fbi.gov) or [www.lookstoogoodtobetrue.com](http://www.lookstoogoodtobetrue.com)

The **“Grandparent Scam”** - In this scenario an older person gets a telephone call from a person they are led to believe is their grandchild. The caller will state that either their wallet and belongings were stolen or they got stopped by the police while in a different country. The caller will ask the “Grandparent” to wire money to them so they can get home, get out of jail, or continue with their vacation. The caller will advise the “Grandparent” to not call any other family members because it is too embarrassing or will cause more trouble. **CALL A FAMILY MEMBER;** confirm that the “grandchild” is out of the country and in trouble. **NEVER WIRE MONEY** based on a request. Once money is wired, it cannot be returned.

The **“Jury Duty Scam”** - This scam involves a person receiving a telephone call that they missed their Jury Duty appointment. The caller states that they need to verify the date of birth and social security number of the person called. Once the caller has this information, the caller can now steal the identity of the person that was called **NEVER PROVIDE ANY PERSONAL INFORMATION, INCLUDING CREDIT CARD INFORMATION TO A PERSON WITH WHOM YOU DID NOT INITIATE CONTACT.** This warning applies to email contact as well.

The **“Work at Home Scam”** is similar to the **“Lottery Scam”**. In both of these cases, the person who is in touch with you, either by phone or by email, is requiring that you pay them upfront for “shipping and handling” or “taxes”. **YOU SHOULD NEVER HAVE TO**

**PAY PRIOR TO WORKING FROM HOME OR RECEIVING LOTTERY WINNINGS.**

The most common is the **“Phishing Scam”** - This involves the internet user receiving an e-mail from a company that the user may have a working relationship with, i.e. AOL or e-Bay. The e-mail looks very professional and may state something to the effect of either the company had their computer system crash, or they are just updating their information and need the user to “click on the link below” and re-enter their credit card and personal information to include passwords. The scammers have also applied this technology to text messages; that type of scam is called “Smishing”

The Lee Police Department warns all residents that any type of e-mail or text as listed above is more than likely fraudulent. However, the “phishers” are persistent and if you don’t reply, they will send additional e-mails and texts with warnings that your account is going to be closed etc...

If you receive an e-mail or text similar to the one above, please do not respond to it. If you are concerned that it may be valid, call the customer service telephone number that was provided to you when you first became a user of that service or business. If the e-mail or text is legitimate, you are still able to provide the information over the telephone to legitimate people. All companies that use the internet are aware of these “phishers” and “smishers” and would be happier if you called them directly to inquire rather than be scammed.

Please remember, the information listed above is just a *small* sampling of some of the scams that are prevalent. Identity theft is an enormous problem worldwide. Please do not become a victim. If you have any questions or want more information do not hesitate to view the websites listed above, or contact the Lee Police Department.

## HIGHWAY DEPARTMENT SUMMER ROAD WORK PLAN

**Paving** – Due to the escalating cost of paving and holding the line on budget increases the Department has fallen behind on the paving schedule. Summer plans include: paving Tuttle Rd., Campground Rd., and a top coat over the newly paved gravel section of Old Mill Rd. In addition the Department would like to pave Kelsey Rd. and West Mill Pond Rd. This would depend on taking funds from the Highway and Bridge Expendable Trust Fund. Durgin Dr., Earle Dr., Thornton Ln., and Jacob's Ln. are all on the due list, with some of the roads going fourteen years since the last paving. There will be some prep work performed on the above roads before paving to include ditching, shimming, and trimming brush.

**Crack Sealing** – Garrity Rd., Snell Rd., Sackett Rd., Jenkins Rd., Packers Falls Rd., and Newtown Plains Rd., are due for crack sealing, but dependent on quotes.

**Seal Coating** – Thompson Mill Rd., Pinkham Rd. West, and Gile Rd. will be seal-coated. Lee Hill Rd. and Cartland may be seal coated, depending upon funding.

**Culverts** – The Department will be replacing several steel culverts that are rusted out. Wednesday Hill Rd., Tamarack Rd., Thompson Mill Rd., Lamprey Ln., and Radford Drive. Also planned is the replacement of an old concrete culvert on Birch Hill Rd.

Other work includes: ditching several roads; guardrail replacement at Fisher Brook on Packers Falls Rd; road side mowing; centerline striping; catch basin cleaning.

Once bids/quotes have been obtained a revised list will be posted on the E-Crier.

## FRIENDS of the LEE LIBRARY

The Friends of Lee Library is a non-profit organization that supports Lee Library activities through memberships and fundraising. Activities that the Friends of Lee Library support include museum passes, children's vacation and summer programs, and adult educational programs.

This summer, the Friends of Lee Library is supporting two exciting summer reading programs – if you are an avid reader of any age, join the library for fun and prizes!

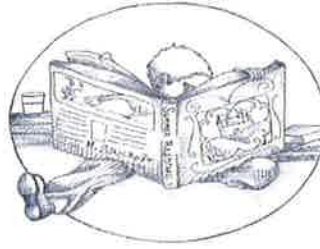
**Ground Breaking Reads** is a new Summer Reading Program for adults. Write very short reviews of the books you read this summer and get entered into our summer reading raffle for every book read!

**Dig Into Reading** is the Summer Reading Program for youth and is all about what's under the surface—underground and in the deep, deep sea. Exciting reading ahead!

**Love to go to museums?** We have discounted passes to museums: Seacoast Science Center, Strawberry Banke, Children's Museum of NH, Currier Art Museum, Boston Children's Museum, Museum of Science, Isabella Stewart Gardner Museum, and the Museum of Fine Arts.

Thanks to your funding, the Friends of Lee Library will continue to support the wonderful activities that you depend on for your family. Not a member yet? It's easy – fill out the form attached and mail it or drop it off at the library. Know that your money goes directly to supporting Lee Library programs!

*Friends of the Lee Library*  
Lee Public Library  
7 Mast Road, Lee, NH 03861



*Lee Public Library*  
7 Mast Road  
Lee, NH 03861-6612

## ***BECOME A FRIEND!***

***Or*** renew your existing membership in the **Friends of the Lee Library**  
and help support *your* library!

Through our efforts we have brought to the community: the Holiday Concert, school vacation programs, museum passes, book collections, multi-media support, and funding for the children's summer reading program.

Complete this form and return it along with your check, payable to:  
"Friends of the Lee Library" at the above address.

Name: \_\_\_\_\_

Address: \_\_\_\_\_  
\_\_\_\_\_

Phone: \_\_\_\_\_

Email: \_\_\_\_\_



New Member \_\_\_\_\_ Renewing Member: \_\_\_\_\_ Renewal Date: \_\_\_\_\_

Would you like to be contacted by phone or email? Phone \_\_\_\_\_ Email \_\_\_\_\_

I am pleased to join but do not wish to be called upon for events \_\_\_\_\_

|                               |         |       |                          |
|-------------------------------|---------|-------|--------------------------|
| Annual Individual Membership  | \$18.00 | _____ |                          |
| Annual Family Membership      | \$25.00 | _____ |                          |
| Annual Senior Membership      | \$10.00 | _____ |                          |
| Additional Financial Donation | \$      | _____ | Total Enclosed: \$ _____ |

I would like to help with any type of fundraising \_\_\_\_\_ or only those checked below:

Baked Goods \_\_\_\_\_ Book Sale \_\_\_\_\_ Silent Auction \_\_\_\_\_ Other Ideas? \_\_\_\_\_  
Holiday and/or Garden Tour \_\_\_\_\_ Library Tent at Lee Fair \_\_\_\_\_

*Thank you! The Friends of the Lee Library*

Lee Town Crier  
Town of Lee, NH  
7 Mast Road  
Lee, NH 03861