

TOWN OF LEE, NEW HAMPSHIRE

7 Mast Road
Lee, New Hampshire 03861
(603) 659-5414
November 21, 2014

Town Offices will be Closed
November 27 & 28 for the
Thanksgiving Holiday



LEE PUBLIC SAFETY COMPLEX

November 22nd 7:30 – 9:00 am



RIDE IN A HORSE DRAWN WAGON TO THE HOLIDAY FESTIVAL

Lee Church Congregational 9:00 am – 2:00 pm
[CLICK HERE](#) for more details

TREE LIGHTING & HOLIDAY CONCERT

4:30 – 7:00 p.m. December 7th



[CLICK HERE](#) for more information

CONSERVATION COMMISSION UPDATE



WHILE ON THEIR WEEKLY TOWN FOREST NATURE WALK, THE CHILDREN FROM MR. MCCORMICK'S CLASS AT MASTWAY SCHOOL WERE VERY IMPRESSED WITH THE BEAUTIFUL NEW BRIDGE BUILT BY TONI AND AARON HARTGERINK

Last Saturday's deconstruction event in the Town Forest went well and quickly. Work began at 10:00 and by 11:30, the two decrepit bridges had been dismantled and "de-nailed." Pressure-treated boards were sledged out of the forest to the transfer station, while un-treated boards were set up as a decomposition experiment for students at Mastway to keep track in years to come.

The bridge-replacement project's final task takes place this **SUNDAY, November 23RD**, when the second bridge will be rebuilt. There aren't that many opportunities in life to build a bridge, so why not come lend a hand? Anyone interested in helping should dress warmly and bring work gloves. A hand-drilling hammer would also be useful. Work begins at 10:00 am and we'll meet at the yellow trailhead (behind the baseball field backstop). If you'd like to help, please contact Toni Hartgerink at 659-2269.

FIRE DEPARTMENT NEWS

CARBON MONOXIDE
AWARENESS MONTH
NOVEMBER 2014

[CLICK HERE](#) for Proclamation
[CLICK HERE](#) for State Fire Marshal Release



SPARKY THE FIRE DOG

[CLICK HERE](#) for NOV/DEC SAFETY EDUCATOR

NH WORKS JOB TRAINING CLASS

Wednesday, December 3rd 9:00 am – Noon
Wentworth Douglass Hospital, Dover, NH
[CLICK HERE](#) for details



HEALTHIERUS SCHOOL CHALLENGE: SMARTER LUNCHROOMS

HUSSC SL is a voluntary certification initiative recognizing those schools enrolled in Team Nutrition that have created healthier school environments through promotion of nutrition and physical activity.

Both the Mast Way and Moharimet Elementary Schools have just received Awards of Distinction! The U.S. Department of Agriculture commends these schools for the exemplary steps, leadership and team work employed to make changes to their schools' nutrition environment; improve the quality of the foods served; provide students with more nutritious, healthy choices; and, enhance their physical activity program. To acknowledge their achievement, the schools will receive a HUSSC award plaque, a banner to display, and a small monetary incentive award (\$500 per school for the Bronze award.)
<http://www.fns.usda.gov/hussc/healthierus-school-challenge-smarter-lunchrooms>

LEARNING AND HEALTH

The CDC and the Association for Supervision and Curriculum Development recently unveiled a new school health model called Whole School, Whole Community, Whole Child Model ~ WSCC. The prior model ~ Coordinated School Health ~ focused primarily on health; the new model incorporates the whole child tenets, with additional emphasis placed on the social-emotional climate, alignment of policies and community involvement. CDC and ASCD officials say they hope schools will adopt the new model to help guide health advisory board and policy decisions.

Go to <http://www.ascd.org/programs/learning-and-health.aspx> for more information.



LEE THANKS THE VOLUNTEER ROADSIDE
PICKUP CREW FROM COPPAL HOUSE FARM
FOR A JOB WELL DONE!!!



DONATIONS NEEDED

CAP is seeking food and monetary donations to help fund their Annual Holiday Food Program. Each year they give HUNDREDS of holiday food baskets to people in need. Please call 603-516-8146 for donation information or give via PayPal at straffordcap.org/donate.

WANTED

HISTORIC PHOTOS OF LEE

[CLICK HERE](#) for more information

The **TRANSFER STATION** is seeking a **SWAP SHOP VOLUNTEER** to cover a morning shift. Call the TS Manager Roger Rice at 659-2239 or the Town Administrator Julie Glover at 659-5414 for details.

OPENINGS still available for **THE TOWN OF LEE**

- **TRUSTEE OF THE TRUST FUNDS**
- **ADVISORY BUDGET COMMITTEE**
- **RECREATION COMMISSION**

[CLICK HERE](#) for an application
& deliver to the Town Hall

MEDIA RELEASE

November 17, 2014

Community Action Partnership of Strafford County is reaching out to striking FairPoint employees to make sure they are aware of the available community resources. These employees are eligible to work with town welfare offices and Community Action to determine financial assistance for:

- Rental assistance (current and back rent due)
- Current and back utility payments
- Emergency food, Fuel and Electrical assistance
- Referrals to other agencies for basic services

For example, a household is eligible if it is at or below 200 percent of the federal poverty guidelines: \$47,700 or less for family of four; \$31,460 or less for family of two.

“Our mission is to help families meet their basic needs and we wanted to make sure these workers know what services are available,” says CAP’s Executive Director Betsey Andrews Parker. “Employees are encouraged to call for an appointment to determine eligibility. Their current work status does not affect their ability to qualify for services.”

Employees can contact their town welfare office, Susan Geier, Community Services and Outreach Director at 603-516-8183 or sgeier@straffordcap.org or CAP’s Outreach Offices at 603-516-8126 or 603-516-8191.

SENIOR ADVISORY COMMITTEE UPDATE

The Pen Pal Program is up and running at Mast Way School. Two community members are now corresponding with third or fourth graders and sharing their life experiences and interests. If you are interested in participating contact us at shirlwalker@comcast.net or 603-659-5786. Special thanks go out to Mast Way staff members for their support in helping to make this program a reality.

Next month’s Family Nature Walk will take place in the Town Forest. As always it will be held on the first Saturday of the month, December 6th. We’ll meet at 9:30am behind the backstop of the baseball field adjacent to Mast Way School. Our walk will include a trip to a porcupine den, a look at some cool trees and a visit to a vernal pool. Along the way we’ll stop to examine a collection of animal skulls. All ages welcome! Nature Walks are sponsored by the Lee Conservation Commission and the Senior Advisory Committee.

The Knitting Gathering, 9:00 am on every other Wednesday, continues to grow in popularity—last week we numbered fourteen! Not only do we get excellent knitting help from Donna Kay but inspiration during the “Show and Tell” time. Donna gives individual help as she makes her way around our group. Sometimes there is a muffled gasp as she “rips” out those rows of knitting and picks up the correct stitches to set us on the right path in that very complicated pattern! Lots of laughs and conversation. The next session will meet on December 3rd. Check with the Library to confirm dates. The Knitting Gathering is sponsored by the Lee Public Library and Senior Advisory Committee.

SAC encourages community members to join our meetings, held on the 2nd Monday of the month at 9:00 am at the Safety Complex.

READY RIDES

NEEDS volunteer DRIVERS from LEE!

READY RIDES volunteer drivers offer free rides to medical appointment for residents 55+ and those who are disabled and unable to drive. They serve Lee, Barrington, Durham, Madbury, Newmarket, Northwood, Nottingham and Strafford.

They need volunteer drivers from Lee! This program receives the support of the town budget and is a great opportunity for active residents with minimal amount of time to volunteer. Drivers receive 25 cents per mile and can pick as many or as few rides as they want to do. Drivers must be at least 25 years old, have a valid driver's license and a favorable driving record. You must have a legally registered, inspected and insured vehicle to transport the rider. You will need to complete a volunteer application that includes a motor vehicle and criminal background check. Volunteer Orientation meetings are held frequently. Please call Meri Schmalz at 224-8719 or email info@readyrides.org for information about this great opportunity to help out your neighbor.

TOWN OF LEE NOW OFFERS ONLINE SERVICES



for car registration renewals, dog licenses, vital records and property taxes. To access the new online services, please visit the Town of Lee's website at www.leenh.org. Credit/debit cards and ACH payments (bank-to-bank transfers) will be accepted for all online transactions. Credit/debit card and internet processing fees will apply.



The Town Clerk/Tax Collector's office now accepts MasterCard, Visa, American Express, and Discover credit cards; debit cards that display these logos are also accepted. **Please note:** There are additional fees to cover the cost of using a credit or debit card - 2.95% of the total transaction with \$1.50 minimum. These convenience fees go directly to the Town of Lee's third party credit/debit card processor and are not retained by the Town of Lee. Convenience fees cannot be refunded. Cash and checks are still accepted forms of payment and do not require additional fees.

ON SALE AT TOWN HALL!
The Early Milles and Industry of Lee, NH
Compiled and researched by Randy Stevens and Susan Wellington
Proceeds to benefit the Heritage Commission



LEE PUBLIC LIBRARY

You like us at the library, now like us on Facebook!



LIBRARY REGULAR HOURS

Monday, Tuesday, Wednesday: 12:00 – 8:00 pm
Thursday, Friday: 10:00 am – 5:00 pm
Saturday: 10:00 am – 3:00 pm

WEDNESDAY, NOVEMBER 26TH OPEN NOON – 5 PM
CLOSED NOVEMBER 27TH & 28TH FOR THANKSGIVING

The library would like to revive its **Armchair Traveler series**. Are there any interested travelers out there who would like to share their adventures with people in the community? If so, please contact the library at 659-2626 or email us at leelibrary@comcast.net.



Thursday & Friday at 10:30 am

These fun 30 – 40 minute programs include stories, songs, finger plays, flannel board and a craft. Registration is not required.

“Creating Connections: Building Community through the Arts”
The following is the first in a series of workshops on a variety of art techniques.



FRESH FLOWER CORNUCOPIA CENTERPIECES

Saturday, November 22nd 10:30 am - Noon

Tina Sawtelle will guide participants in creating a centerpiece for their Thanksgiving table. Ages 15 and up. **Please register. Limited to 12.** Spaces are filling up fast so if you are interested in participating call 659-2626. Sponsored by the Friends of the Lee Library.



MANDALAS FOR ADULTS

Tuesday, December 2nd 6:00 – 8:00 pm

Create a little harmony in your life by making a mandala. The word mandala from Sanskrit means “sacred circle.” Making a circle brings order to things and helps to catch and focus your attention inside the circle so you are distracted by what is outside of it. This focus helps to relax the body and release natural healing processes. **Ages 15 and up. Please register by calling 659-2626. Limited to 12.** Sponsored by the Friends of the Lee Library.

ON GOING PROGRAMS



NO FOOLIN, JUST FUN – ADULT GAME DAY

Tuesdays, Next day November 18th at 9:30 am

Come join the fun, make new friends and learn some new games. All are welcome! Open to all adults 18 and older.



STORY TREKKERS
Tuesdays 3:30 – 4:30 pm
Ages 6-10

Read a variety of authors and award-winning books. Snack, games and a craft included. Most way students ride bus 23. **Please register. This program is currently filled and has a waiting list.**



KNITTING GET TOGETHER
Tuesdays, 6:30 - 8:00 pm

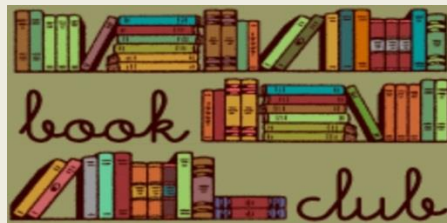
Come and join other knitters for an evening of knitting and socializing. Bring that project you've been meaning to finish and make some new friends. Sorry, there are no instructors.



KNITTING FOR 50+

ALTERNATE WEDNESDAYS, DECEMBER 3rd & 17th 9AM

A drop-in group will meet at the library. Help is available from instructor, Donna Kay. All levels welcome. **Offered by the Senior Advisory Committee in conjunction with the Lee Library.**



ROCKIN' READERS BOOK CLUB

Thursdays 3:00 – 4:00 pm
5th & 6th Graders

Book discussion – read and discuss a different book each month. Take bus 21. **Please register.**



DONATION ANNOUNCEMENT

Beginning on November 1, 2014, the library will no longer accept book donations for the book sale until the spring of 2015. Our book sale shelves are bursting at the seams, so please feel free to come by anytime there isn't a program going on downstairs and fill a bag.



MARIPOSA MUSEUM AND WORLD CULTURE CENTER Peterborough, NH

Thanks to the generosity of the Friends of the Lee Public Library, we now have a membership to the Mariposa Museum and World Culture Center. The pass admits 2 adults and 2 children for free. The museum is currently running an exhibit called "World of Chocolate" until January 15, 2015. Check out their website www.mariposamuseum.org.



CURRIER MUSEUM OF ART Manchester, NH

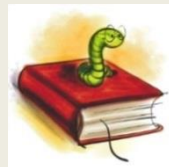
Our pass to the Currier courtesy of the Friends of the Lee Public Library, admits up to 2 adults for free. Children under 18 are also free. Beginning September 20, 2014 - January 5, 2015, the museum is presenting an exhibit by M.C. Escher called "Reality and Illusion". There will be a \$5 special exhibition charge to view the exhibit. Upcoming exhibits include, Still Life: 1970's Photorealism, Audubon's Wild Animals of North America, Witness to History: James Nachtwey Photography, and Killer Heels: The Art of the High Heeled Shoe. Check out their website for all their programs: www.currier.org.



Did you know the library has a Kindle and a Nook available for checkout? Great opportunity to explore whether or not you like reading on an electronic device!

BOOKWORM DIGEST

Sign up for the Bookworm Digest: A monthly newsletter all about everything going on at Lee Public Library. Send an email to leelibrary@comcast.net to get the Bookworm Digest sent once a month.



Please visit the following link to view all the library's programs:
leenh.org/pages/LeeNH_LibraryCal/?formid=158



FRIENDS OF THE LEE LIBRARY

The Friends of Lee Library is a non-profit organization that supports Lee Library activities through memberships and fundraising. Activities include museum passes, children's vacation and summer programs, and adult educational programs. Thanks to your funding, the Friends of Lee Library will continue to support the wonderful activities! Not a member yet? It's easy - [CLICK HERE](#) !

LAMPREY HEALTH CARE SENIOR TRANSPORTATION PROGRAM

Lamprey Health Care's Senior Transportation program provides rides to essential services for individuals over the age of 60 and/or with disabilities. Our handicap-accessible buses take seniors and adults with disabilities to the grocery store, pharmacy, doctor, or bank! For reservations or more information call 1-800-582-7214 or 659-2424 Monday through Friday, 8:00am - 4:00pm or go to lampreyhealth.org/index.php/patient-services/transportation_program



JOIN THE LEE FIRE RESCUE DEPT.

The Department is always looking for new members!

Please stop by the Safety Complex Monday - Friday 8:00 am to 4:00 pm or during one of our training meetings, held on the 2nd and 4th Thursday of each month at 7:00 pm.



EMERGENCY NOTIFICATION SYSTEM

The Town of Lee Police, Fire & Emergency Management will now utilize the emergency notification system known as CODE RED. [CLICK HERE](#) for instructions. Please visit leenh.org to sign up!



CHANNEL 13

Check your local TV channel 13 to view Selectmen's meetings aired daily at 7:00 am; 2:00 pm; 7:00 pm. [CLICK HERE](#) for more details on Channel 13. [CLICK HERE](#) to view town meetings and videos online through the media site at leenh.org.

Sun	Mon	Tue	Wed	Thu	Fri	Sat
				1	2	3
4	5	6	7	8	9	10
11	12	13	14	15	16	17
18	19	20	21	22	23	24
25	26	27	28	29	30	

MEETING CALENDAR

To view the meeting calendar on leenh.org [CLICK HERE](#)



DISPOSAL OF PRESCRIPTION DRUGS

A drop-off box is available at the Public Safety Complex for unused and unwanted prescriptions.

STRAFFORD COUNTY CITIZEN CORPS
HEALTH & SAFETY COUNCIL
OF STRAFFORD COUNTY

Click below for good information about Influenza. Click on the "Senior" web page link for more information.

dhhs.nh.gov/dphs/cdcs/influenza/index.htm



WILKINSON FOOD PANTRY
Lee Church Congregational 17 Mast Rd

The food pantry is open to any family in the Town of Lee. The pantry is open the first and third Monday of each month from 6 - 7:00 pm. If there is an emergency please call the Church office at 659-2861. All visits to the pantry are strictly confidential.



Community Action Partnership
Pregnant? New Baby? CAP Can Help!

If you are pregnant, know someone who is, or just had a baby, Community Action can help. We have a free Home Visiting program for teens and women age 25 and under. Call CAP's Home Visiting at 603-516-8108 to learn more or visit www.traffordcap.org.



FUEL & ELECTRICAL ASSISTANCE

CAP employees are now taking appointments for fuel and electrical assistance. Last year, we served nearly 3,900 households. Income-eligible households can get help paying their winter heating bills by applying for fuel assistance now through April 30, 2015. Electrical assistance is available year round. We have flexible hours and locations for appointments. Call today at 603-516-8126 or 603-516-8191. Visit www.traffordcap.org



**Food Pantry
Donations Needed**

DONATIONS NEEDED FOR FOOD PANTRIES

We are seeking donations of non-perishable food items, grocery store gift cards and financial donations to help stock our food pantries in Dover, Farmington and Milton. Supplies are critically low yet demand remains very high. To donate, visit www.traffordcap.org/donate today! Our food pantries serve individuals and families from all over Strafford County.

**BITS of HISTORY from
The NEWMARKET ADVERTISER
November 1893**



One of Mrs. Cook's hens is in the contest for the blue ribbon, having laid an egg that measures seven inches in circumference, four inches length, and weighs a trifle over five ounces.

To receive the E-CRIER via email EVERY WEEK go to www.leenh.org, click on Subscribe to E-Alerts and follow the directions to subscribe. It's that easy!
