

# TOWN OF LEE, NEW HAMPSHIRE

7 Mast Road  
Lee, New Hampshire 03861  
(603) 659-5414

November 17, 2017

Lee News & Upcoming  
Events



## FROM THE TOWN OF LEE

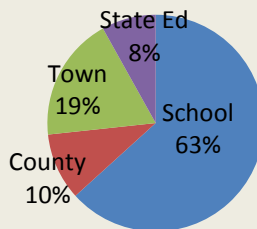
---

**TOWN OFFICES and the TRANSFER STATION WILL BE CLOSED THURSDAY, NOV 23<sup>RD</sup>  
& FRIDAY, NOV 24<sup>TH</sup> FOR THE THANKSGIVING HOLIDAY**

**THE LIBRARY WILL BE OPEN TIL 5PM ON WEDNESDAY, NOVEMBER 23<sup>RD</sup>  
CLOSED ON THURSDAY, NOV 23<sup>RD</sup> & FRIDAY NOV 24<sup>TH</sup> AND OPEN REGULAR HOURS ON  
SATURDAY, NOVEMBER 25<sup>TH</sup>**

---

## 2017 Tax Rate



School	County	Town	State Ed
\$19.02	\$2.86	\$5.67	\$2.39

The 2017 Town of Lee Tax Rate has been set at \$29.94.  
The tax bills have been mailed out and payment is due by December 1, 2017.



**SATURDAY, NOVEMBER 18<sup>TH</sup> 7:30 am – 9:00 am**  
Lee Public Safety Complex, George Bennett Road, Lee, NH

---



**LEE HISTORICAL SOCIETY MUSEUM**  
**OPEN EVERY 3<sup>RD</sup> SATURDAY 10 AM – 2 PM**  
**LAST DAY NOVEMBER 18<sup>TH</sup>**

---

**NOVEMBER SELECT BOARD MEETINGS**  
**Monday, November 20<sup>th</sup> starting at 6:30 pm**

Meetings can now be seen on **You Tube** at [www.media.leenh.org](http://www.media.leenh.org)

---



**THE LEE POLICE ASSOCIATION HOSTS**  
**THE ANNUAL END 68 HOURS OF HUNGER FOOD DRIVE**  
**November, 25<sup>th</sup> 8:00 am – 2:00 pm Lee Transfer Station**

**SUGGESTED FOOD DONATIONS:**

Whole Grain Cereals (Low Sugar)  
Cans of Tuna, Chicken, or Turkey  
Cans of Fruit or Packets of Fruit Cups  
Canned Beans; Black Beans; Baked Beans  
Canned Vegetables: Mixed; Green Beans;  
Corn  
Canned Tomato Sauce for Pasta  
Packs of Pudding Cups  
Small Jars of Peanut Butter  
Packets of Hot Cocoa (Prepared with water)

Boxes of Triscuits  
Cans of Beef Stew  
Cans of Pasta: Ravioli; Spaghetti-O's, etc.  
Cans of Chili  
Boxes of Pasta  
Individual Packets of Trail Mix  
Packets of Oatmeal  
Jelly  
Soup (sm & lg cans): Tomato; Vegetable;  
Chicken Noodle

## NEW SWAP SHOP PROGRESS



PICTURE BY TOBY VAN AKEN



PICTURE BY RANDY STEVENS



PICTURE BY DAVID MEEKER



PICTURE BY RANDY STEVENS



PICTURE BY RANDY STEVENS

Members of the Lee Energy Committee cheered Randy Stevens, Toby Van Aken, Peter Hoyt and Dave Allen on as they worked to get the new Swap Shop's foundation poured before the snow flies.



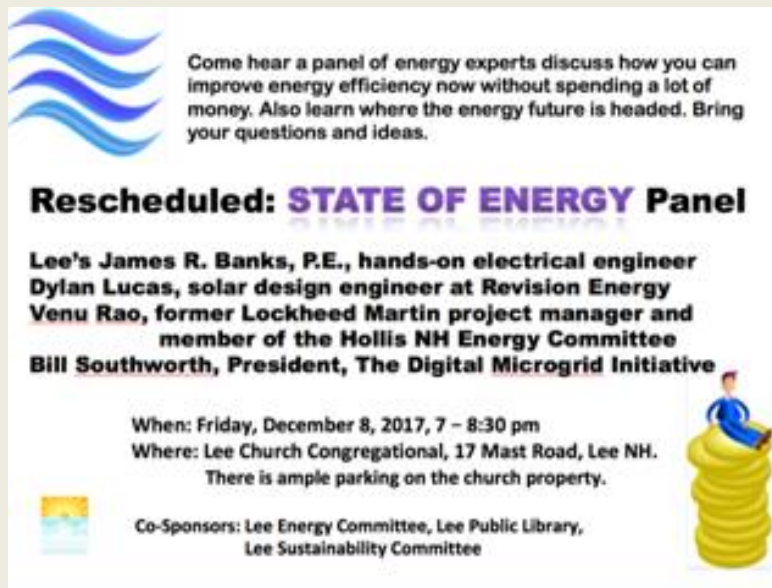
## TREE LIGHTING & HOLIDAY CONCERT CELEBRATION!

Saturday, December 2<sup>nd</sup>

Town Triangle at 4:00 pm

Jeremiah Smith Grange Hall 4:30 – 7:00 pm

[CLICK HERE](#) for more information



---

## LEE CIRCLE WATER LINE EXPANSION PROJECT | D-UNH WATER SYSTEM

Since 2015, the Towns of Durham and Lee, along with the University of New Hampshire and the NH Department of Environmental Services, have been in discussion concerning supplying water to 7 MTBE contaminated sites at the Lee Traffic Circle.

MTBE is a gasoline additive and a potential human carcinogen. It is often introduced into water-supply aquifers by leaking underground storage tanks at gasoline stations or by gasoline containing MTBE spilled onto the ground.

NHDES, working in close conjunction with Durham and UNH, contracted with Weston and Sampson Engineers to develop feasibility studies and water modeling to look at options and impacts if connected to the nearby Durham-UNH Water System. Various scenarios were modeled to determine the impact the full build out of the Lee Commercial District would have on the Durham-UNH water pressure and supplies. It was determined that the current Durham-UNH system could support the project, so long as a variety of improvements were made within the Durham-UNH system, to be funded by NHDES using various water pollution control funds. Conversations continue but it appears that the project is feasible, and the Durham-UNH water system and the Lee Select Board are supportive of the project.

Durham and Lee have a decades old agreement dating to the original siting of Durham's well in Lee near Lee Five Corners to provide a percentage of the supply to the Town of Lee if needed in the future.

Last week, the state's Drinking Water and Groundwater Trust Fund Advisory Commission approved \$35 million in grants and loans for communities across New Hampshire, including funds for the Lee water line extension from the Durham/UNH System. The project will also need additional approvals from other state entities.

*Excerpts from Durham's Friday Updates, Nov. 9, 2017.*

---

## STORM UPDATE

NH Homeland Security & Emergency Management Director Perry Plummer asks the owners of homes or businesses that sustained damage as result of the October 29<sup>th</sup> – 30<sup>th</sup> storm to report the damage to 2-1-1 or 1-866-444-4211.



**LEE SELECT BOARD VOTES TO ENACT  
THE TOWN CENTER VISION COMMITTEE**

[CLICK HERE](#) to view the TCVC Charge

Please call the Town Administrator at 603-659-5414 or  
email [townadministrator@leenh.org](mailto:townadministrator@leenh.org) with questions.



**LEE TOWN COMMISSIONS AND COMMITTEES**

**AGRICULTURAL, CONSERVATION, &  
RECREATION COMMISSIONS;  
ENERGY & SUSTAINABILITY COMMITTEES**

[CLICK HERE](#) for Application

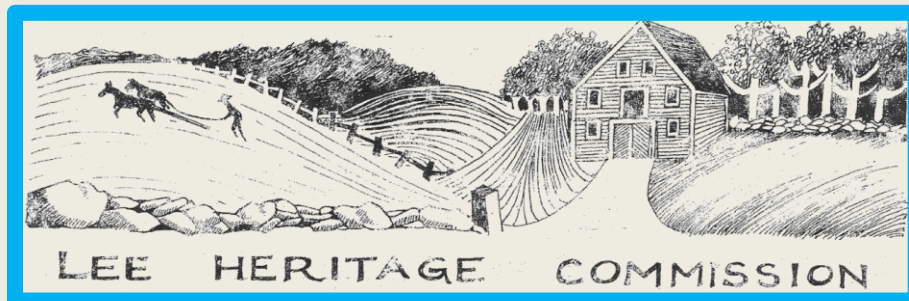
Hand deliver to Town Hall or email application to the Town Secretary at [dduval@leenh.org](mailto:dduval@leenh.org).

**COMMITTEE, COMMISSION & BOARD MEETING CALENDAR**

Go to [www.leenh.org/Pages/LeeNH\\_MeetingsCal/?formid=158](http://www.leenh.org/Pages/LeeNH_MeetingsCal/?formid=158)

**LIBRARY CALENDAR**

Go to [http://leenh.org/pages/LeeNH\\_LibraryCal/?formid=158](http://leenh.org/pages/LeeNH_LibraryCal/?formid=158)



**THIS WEEK'S NEW LEE TRIVIA QUESTION!!** *(Answer will be given in next week's Lee E-Crier):*

**What year did the Market Basket store, near the Lee Traffic Circle, open?**

**If you have suggestions for Lee Trivia Q's & A's, please email Anne Jennison: ([jennison.anne@gmail.com](mailto:jennison.anne@gmail.com))**

The Lee Heritage Commission is currently working on several projects, which we will be reporting on as developments occur, including: assembling and editing the 2018 Lee Wall Calendar, creating a Mission Statement and Collections Policy for the historic Lee Archives, researching and preparing applications for NH State historic recognition for the Lee Town Center buildings (the buildings include the Lee Town Hall, Lee Town Hall Annex, Lee Public Library, Lee Historical Society, and the Lee Town Hobo Shed). Additionally, we are conducting, recording, and transcribing oral interviews with various town elders, to collect oral histories of Lee - as well as investigating the means to have some of the older documents and journals in our collections digitized to make them more accessible to the public.



## HUNTING

Please note it is Hunting Season again! Please be safe and take precautions.  
Go to <http://www.wildlife.state.nh.us/hunting/hunt-dates.html> for details.

---

## POLICE REMINDER

**Please do not become a victim. WHEN IN DOUBT, DON'T GIVE IT OUT.**

The scammers are still working to obtain your information. Do NOT click on any links in emails or provide any personal or banking information either on the telephone or on the internet, unless you initiated the contact. Also, remember the IRS will NEVER call you! They will always send mail!

---



**READY RIDES** offer free rides to medical appointments for residents 55+ and those who are disabled and unable to drive. They serve Lee, Barrington, Durham, Madbury, Newmarket, Northwood, Nottingham and Strafford. Please call Meri Schmalz at 224-8719 or email [info@readyrides.org](mailto:info@readyrides.org) for more details about how to help your neighbor. **Volunteers from Lee are needed!**

---



## LEE FIRE RESCUE DEPARTMENT SEEKING CALL FIREFIGHTERS AND EMTS

[CLICK HERE](#) for more information

[CLICK HERE](#) for Safety Educator

### ***FIRE DEPARTMENT UPDATE***

The Select Board recently approved a new Fee Schedule for the Lee Fire Department.

Please [CLICK HERE](#) for the Fee Schedule

Please [CLICK HERE](#) for the Permitting Checklist and Reference Guide

## BURN PERMIT

[CLICK HERE](#) for NH BURN PERMIT RULES AND REGULATIONS  
GO TO [www.nhfirepermit.com](http://www.nhfirepermit.com) to obtain a fire permit online

---



### WILKINSON FOOD PANTRY

Lee Church Congregational 17 Mast Rd

**Wilkinson Pantry will be closed on Monday, November 20th. If you have a food emergency, contact the Lee Church Office at 603-659-2861.**

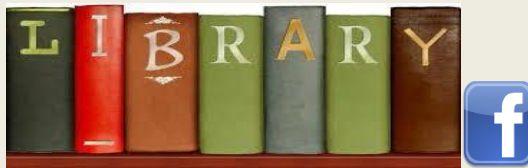
The food pantry is open to **any family** in the towns of Lee, Durham, Newmarket and Nottingham. The pantry is open the 1<sup>st</sup> & 3<sup>rd</sup> Monday of each month from 6 - 7:00 pm. If there is an emergency please call the Church office at 659-2861. All visits to the pantry are strictly confidential.



### DISPOSAL OF PRESCRIPTION DRUGS

A drop-off is available at the Public Safety Complex to the left of the front entrance for unused and unwanted prescriptions.

### Lee Public Library



**OPEN WEDNESDAY, NOVEMBER 23<sup>RD</sup> UNTIL 5pm**

**CLOSED THURSDAY, NOVEMBER 23<sup>RD</sup> & FRIDAY, NOVEMBER 24<sup>TH</sup> for THANKSGIVING**

**Monday, Tuesday, Wednesday: 12:00 – 8:00 pm**

**Thursday, Friday: 10:00 am – 5:00 pm**

**Saturday: 10:00 am – 3:00 pm**



**BOUQUET BAR – BUILD YOUR OWN COLOR SPRAY**  
**Saturday, November 18<sup>th</sup> 11:00am – 1:00pm**

Drop by the library any time between 11 a.m. and 1 p.m. and make a hand-tied bouquet. Tina Sawtelle will provide the flowers, and the flower arranging knowhow. **Sponsored in part by the Friends of the Lee Library.**



**TURKEY DROP-IN-CRAFT**  
**Monday, Nov 13<sup>th</sup> – Saturday, Nov 18<sup>th</sup>**  
**Drop by and make a turkey**

## ONGOING PROGRAMS



**STORY TREKKERS**  
**Tuesday Afternoons 3:30 – 4:30pm**

This program for **grades K-4** will introduce children to a variety of authors and award-winning books. A snack, games and a craft are also included. Mast Way students may arrange to ride **bus 6** directly to the library after school. Please **register** by calling 659-2626.



**ROCKIN' READERS BOOK CLUB**  
**1<sup>ST</sup> Thursday of each Month**  
**3:30 – 4:30 pm Grades 5-6**

Participants will read & discuss a different book each month. Pizza will be served. Students may arrange to take **bus 6** directly to the library after school. If interested, **sign up** by calling 659-2626.



**STORY TIME**  
**Thursdays 10:30 am Children ages 2-6**

These fun 30-40 minute programs include stories, songs, finger plays, flannel board and a craft. **Registration not required.**



**TINY TOTS LAPSIT**  
**Children up to 2 years of age**  
**Friday, Nov. 17<sup>th</sup> at 10:30am**

Join us for a baby/toddler lapsit. This 20 minute program offers songs, stories and movement with relaxed time afterwards for play and socializing. **Registration is not required.**





**FUN FRIDAYS**  
**3:30 – 4:30 pm Grades K-4**

Have fun making puppets and building with Robots and Legos. This is a drop-in program. Mast Way students may arrange to ride **bus 6** from school to the library.

**Nov. 17. Legos**



**NO FOOLIN, JUST FUN**  
**ADULT GAME DAY**  
**Tuesdays 9:30am**

Come join the fun, make new friends and learn some new games. All are welcome! Open to all adults 18 and older.



**KNITTING FOR 50+**  
**1<sup>st</sup> & 3<sup>rd</sup> Wednesdays 9:30am**  
**December 6<sup>th</sup> & 20<sup>th</sup>**

Help is available from instructor  
 Donna Kay. All levels welcome.

The Trustees of the Lee Library and the Friends of the Lee Library invite you to the Annual Christmas Tree Lighting and Holiday Concert on **Saturday, December 2, 2017.**

4:00 pm - Tree Lighting Town Center Triangle

4:30 pm - Concert at the Jeremiah Smith Grange featuring members of the Oyster River High School Jazz Band. Refreshments will be served.

**Regional & State  
 News & Events**

### **McGregor EMC Collecting Donations for The Homemakers Health Services**

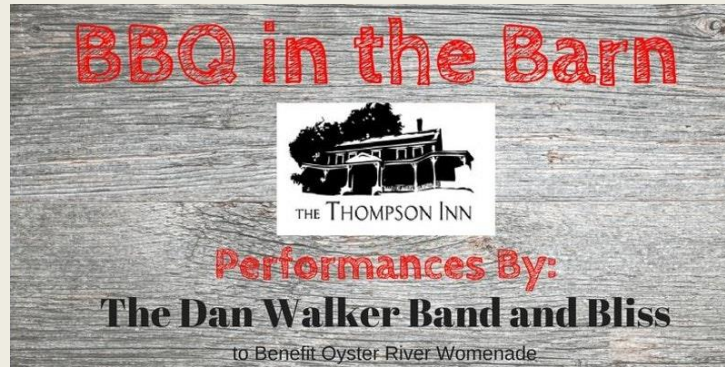
McGregor EMS is collecting donations on behalf of The Homemakers Health Services, [thehomemakers.org](http://thehomemakers.org), whose mission is to provide health care and supportive services to those in need so they can remain safely in their home. The Homemakers will be making gift baskets for senior citizens in Strafford County. Items needed include nonperishable food, new socks, new sheets or blankets, personal hygiene items and pet food. Items may be dropped off at Madbury Town Hall, Madbury Library, Lee Public Safety Building, Durham Town Hall or at McGregor EMS. If these locations are not convenient, a McGregor member will gladly come to you! Kindly call our station at 862-3674 between 7am and 5pm and ask for a pick-up.

**STRAFFORD REGIONAL PLANNING COMMISSION PUBLIC COMMENT PERIOD  
& PUBLIC HEARING ON THE UPDATES TO  
THE 2015-2040 METROPOLITAN TRANSPORTATION PLAN**

[CLICK HERE](#) for Memo

[CLICK HERE](#) for Plan

---



**BBQ IN THE BARN – TO BENEFIT OYSTER RIVER WOMENADE**

**Saturday, November 18<sup>th</sup> 5:00 – 9:00 pm**

**Thompson Inn & Cyderhouse, 90 Bennet Road, Durham, NH 03824**

[CLICK HERE](#) for flyer

Go to [www.orphomenade.org](http://www.orphomenade.org)

For Tickets go to <https://bbqinthebarn.eventbrite.com>

---

**STATE OF OUR ESTUARIES CONFERENCE – BEYOND BORDERS**

**Friday, December 8<sup>th</sup> 9:00 am – 4:00 pm**

**Portsmouth Harbor Events Center, Portsmouth, NH**

[CLICK HERE](#) for more details and to Register

---

**EVERSOURCE**  
ENERGY

780 North Commercial St.  
Manchester, New Hampshire 03101

**NEWS RELEASE**

**Eversource, 100+ Energy Companies, Retailers and Local Law Enforcement Urge  
Customers to Beware of Scams**

*New signs posted at retailer checkouts warn customers of prepaid card scam*

**MANCHESTER, N.H. (November 15, 2017)** – Eversource business and residential customers continue to pick up their phones and open their doors to find individuals falsely claiming to be “representatives” or “employees” of Eversource on the other side. These individuals either threaten disconnection of energy service if an immediate payment isn’t made with a prepaid debit card, or they use deceptive marketing tactics to mine for customers’ personal account information. This week, as part of Utilities United Against Scams, a consortium of over 100 energy companies, Eversource is urging its customers to beware of scammers and to heed law enforcement’s warnings.

A common scam impacting New Hampshire energy customers – especially small businesses – involves a fraudster calling and stating that due to a customer’s “delinquent” account, a truck has been dispatched to disconnect their service unless a payment is made within a short time frame.

Scammers usually demand immediate payment with a gift card or prepaid debit card, such as Green Dot MoneyPak, Vanilla or Reloadit purchased from a local retailer, in order to stop the disconnection of services. The scammers will provide the victim with a phone number to call back with their prepaid debit card information.

“The key to stopping these scammers is to stay calm - don’t panic and don’t pay,” said Penni Conner, Senior Vice President and Chief Customer Officer at Eversource. “Together with our fellow energy companies, retailers and local law enforcement, we’re urging any of our customers who receive a suspicious phone call or home visit to call us at 1-800-662-7764 to verify ANY request for payment or personal information.”

To help combat the scams from continuing, Eversource has worked closely with local retailers who sell prepaid debit cards to post warning signs at store checkout counters, reminding people that energy companies will never request payment with a prepaid card.

Local law enforcement is also sounding the alarm on scammers. "You’re being targeted by a scammer if you receive a call demanding a hasty payment with a gift card,” said Londonderry Police Det. Chris Olson. “Another sign is a request for payment of a high amount, much more than a monthly bill. If you know your monthly bill isn’t that high, that should be a red flag. Contact your energy company to verify a representative is who they say they are. If something seems suspicious, call the police right away.”

Reminders:

- Eversource representatives never ask for instant payment in person or over the phone.
- Eversource representatives do not require the use of prepaid debit cards (such as Green Dot MoneyPak, Vanilla or Reloadit).
- Eversource representatives never request customers meet at a payment center, such as a department or grocery store, to make a payment.
- Eversource does not solicit door-to-door or on the phone on behalf of third-party energy suppliers.

Eversource urges anyone who believes they are a target of improper solicitation to please contact them directly at 1-800-662-7764. The company tracks these types of customer concerns and reports them to state regulators. [Eversource.com](http://Eversource.com) and the [Utilities United Against Scams](http://Utilities United Against Scams) websites provide more information on how to protect personal information and avoid becoming a victim of utility scams. Concerned customers can also report scams and fraudulent activity by calling the New Hampshire Public Utilities Commission at 603-271-2431.

#### **OYSTER RIVER MIDDLE SCHOOL FACILITIES COMMITTEE**

[http://orcsd.org/school\\_board/board\\_appointed\\_committees/facility\\_committee/](http://orcsd.org/school_board/board_appointed_committees/facility_committee/)

#### **ARTICLE BY OYSTER RIVER COOPERATIVE SCHOOL BOARD CHAIR THOMAS NEWKIRK REGARDING CURRENT MIDDLE SCHOOL**



#### **NH FISH AND GAME LANDOWNER NEWSLETTER**

<http://www.wildnh.com/landshare>

---



To receive the E-CRIER via email EVERY WEEK go to, click on Subscribe to E-Alerts and follow the directions to subscribe. It's that easy!

**ATTENTION!**

We heard that there may be Lee residents who wish to see the E-Crier but do not have the internet!! If you have contact with these people kindly direct them to Town Hall for a printed copy or to the Library to view it there. If they cannot leave their home please have them call Denise Duval, Town Secretary, at 659-5414 to have it mailed!