

TOWN OF LEE, NEW HAMPSHIRE

7 Mast Road

Lee, New Hampshire 03861

(603) 659-5414

November 14, 2014



FIRE DEPARTMENT NEWS

*State of New Hampshire
By Her Excellency
Margaret Wood Hassan, Governor*

A Proclamation

*CARBON MONOXIDE
AWARENESS MONTH
NOVEMBER 2014*

*[CLICK HERE](#) for Proclamation
[CLICK HERE](#) for State Fire Marshal Release*

ROGER RICE
RECEIVES AMERICAN RED CROSS BLOOD SERVICES
NORTHERN NEW ENGLAND REGION
OUTSTANDING SPONSOR AWARD
[CLICK HERE](#) to see Award Notice



MCGREGOR MEMORIAL EMS PROUDLY ANNOUNCES
THAT **BRIAN VAN DAM** RECENTLY RECEIVED
2014 VOLUNTEER SERVICE AWARD
[CLICK HERE](#) for full article

**LEE HISTORICAL SOCIETY MUSEUM
LAST DAY OPEN FOR THE SEASON**



LAST 3RD SATURDAY TO BE OPEN IS **NOV 15TH**
10:00 AM - 2:00 PM

WANTED
HISTORIC PHOTOS OF LEE
[CLICK HERE](#) for more information

CONSERVATION COMMISSION UPDATE



STUDENTS FROM MS. BUSWELL'S CLASS AT MASTWAY SCHOOL ENJOY THE VIEW FROM THE NEW BRIDGE ON THE TOWN FOREST YELLOW TRAIL

Construction of the first of two new bridges being rebuilt in the Town Forest has been completed, and is a wonderful improvement to the dilapidated bridge it replaces. The second bridge is scheduled to be rebuilt next Saturday (November 22). This weekend's task involves dismantling and removing the two old bridges being replaced. Bridge deconstruction begins at 10:00 am on **Saturday, November 15th**. We'll meet at the yellow trailhead (behind the baseball field backstop). Folks interested in helping should dress warmly and bring work gloves. Crowbars would be useful, as well as plastic sleds to haul old boards out of the forest. If you'd like to help, please contact Toni Hartgerink at 659-2269.

LEARNING AND HEALTH

The CDC and the Association for Supervision and Curriculum Development recently unveiled a new school health model called Whole School, Whole Community, Whole Child Model ~ WSCC. The prior model ~ Coordinated School Health ~ focused primarily on health; the new model incorporates the whole child tenets, with additional emphasis placed on the social-emotional climate, alignment of policies and community involvement. CDC and ASCD officials say they hope schools will adopt the new model to help guide health advisory board and policy decisions.

Go to <http://www.ascd.org/programs/learning-and-health.aspx> for more information.

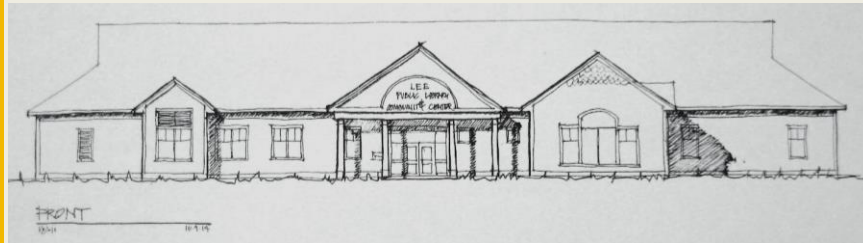
NEW SIGN FOR LEE CANOE ACCESS



DICK LORD, PRESTON SAMUEL, KEVIN MARTIN AND JAKE POIRIER

Travelers on Route 152 near Wadleigh Falls will notice a new sign marking Lee's only public canoe access. The site and ramp, donated to the Town of Lee by the Lamprey Rivers Advisory Committee, has been open since 2011. Until just recently, the site was marked by a temporary sign. LRAC representatives Dick Lord, Preston Samuel, and Sharon Meeker led the effort to create the sign. Kevin Martin designed and built the framework. UNH student Jake Poirier helped with the installation. All costs were generously donated by the Lamprey Rivers Advisory Committee. Although the paddling season is quickly coming to a close, the sign will be a strong reminder that the river is ours to enjoy and protect.

LIBRARY TRUSTEES' CORNER



Lee Public Library Community Center

Public Information Session

Thursday, November 20TH, 7:00 pm

Public Safety Complex, 2nd floor meeting room

Want to know what's happening with the Library Community Center project? Here's your chance to find out! The Building Committee has been working this summer and fall to reduce the cost of the project - come see the latest revisions to the floor plan and building design and let us know what you think - what is essential, what does the town need now, what can be postponed for future expansion. Architect Dennis Mires and representatives from Milestone Engineering will be on hand to explain the revisions, and answer questions.

Working together, Lee can build it!

SENIOR ADVISORY COMMITTEE UPDATE



MEMBERS OF THE FOREST SCHOOL COOPERATIVE LEARN ABOUT THE STRANGE LITTLE PLANT CALLED INDIAN PIPES. ALSO KNOWN AS CORPSE PLANT, INDIAN PIPES HAVE NO CHLOROPHYL & GET THEIR NUTRIENTS FROM FUNGI & TREE ROOTS GROWING NEARBY

There were lots of interesting things to see and do during last Saturday's Family Nature Walk at Little River Park. Before setting out, we were entertained by the aerial maneuvers of cedar waxwings, as a good-sized flock flitted from one tree top to another. Clear crisp weather made our walk along the trails a real pleasure. Chickadees and titmice could be heard each time we stopped to learn about different plants we encountered along the way. Also of interest was the distribution of the first five plant ID stone markers. Painted by Shirley Walker, each stone identifies particular plants found in the park. As you walk along the trails, keep an eye out for stones identifying American chestnut, Canada mayflower, tall round-headed bush clover, pipsissewa and wintergreen. During the months to come (particularly after winter is over) more stone ID markers will be set beside plants along the trails. Next month's Family Nature Walk will take place in the Town Forest. As always it will be held on the first Saturday of the month, December 6th. We'll meet at 9:30 behind the backstop of the baseball field adjacent to Mast Way School. Our walk will include a trip to a porcupine den, a look at some cool trees and a visit to a vernal pool. Along the way we'll stop to examine a collection of animal skulls. All ages welcome! Nature Walks are sponsored by the Lee Conservation Commission and the Senior Advisory Committee.

At a recent meeting of the SAC, Larry Kindberg, Chairman of the Lee Recreation Commission, listened to our ideas for a safe walking path for seniors. This idea came from a community member via email to SAC expressing her concern that such an area was not available in Lee. Most importantly, we felt that the path would need to be smooth, not necessarily level. Larry suggested such an area might be available at Little River Park and will bring his ideas for establishing the path to the Lee Recreation Commission and then to the Select Board for approval of installation.

SAC encourages community members to join our meetings, held on the 2nd Monday of the month at 9:00 am at the Safety Complex.

SENIOR ADVISORY CONTINUED

Fourteen knitters gathered at the Lee Public Library on Wednesday, some sharing their finished projects in a “Show and Tell” while interested knitters gathered inspiration for upcoming projects. A reminder that the 9:00 am knitting gathering scheduled for the 19th has been cancelled and the next session will meet on December 3rd, same time and place. The Knitting Gathering is sponsored by the Lee Public Library and Senior Advisory Committee.

READY RIDES

NEEDS volunteer DRIVERS from LEE!

READY RIDES volunteer drivers offer free rides to medical appointment for residents 55+ and those who are disabled and unable to drive. They serve Lee, Barrington, Durham, Madbury, Newmarket, Northwood, Nottingham and Strafford.

They need volunteer drivers from Lee! This program receives the support of the town budget and is a great opportunity for active residents with minimal amount of time to volunteer. Drivers receive 25 cents per mile and can pick as many or as few rides as they want to do. Drivers must be at least 25 years old, have a valid driver's license and a favorable driving record. You must have a legally registered, inspected and insured vehicle to transport the rider. You will need to complete a volunteer application that includes a motor vehicle and criminal background check. Volunteer Orientation meetings are held frequently. Please call Meri Schmalz at 224-8719 or email info@readyrides.org for information about this great opportunity to help out your neighbor.

**The TRANSFER STATION is seeking a
SWAP SHOP VOLUNTEER to cover a morning shift.**

**Call the TS Manager Roger Rice at 659-2239 or the
Town Administrator Julie Glover at 659-5414 for details.**



OPENINGS still available for THE TOWN OF LEE

- TRUSTEE OF THE TRUST FUNDS
- ADVISORY BUDGET COMMITTEE
- RECREATION COMMISSION

**[CLICK HERE](#) for an application
& deliver to the Town Hall**

GOVERNOR & EXECUTIVE COUNCIL MEETING MINUTES FROM NOVEMBER 12TH

[CLICK HERE](#) for the minutes

Next Governor & Executive Council Meeting
Wednesday, December 3, 2014 at 10:00 am in the Executive
Council Chamber at the State House Concord, NH

TOWN OF LEE NOW OFFERS ONLINE SERVICES



for car registration renewals, dog licenses, vital records and property taxes. To access the new online services, please visit the Town of Lee's website at www.leenh.org. Credit/debit cards and ACH payments (bank-to-bank transfers) will be accepted for all online transactions. Credit/debit card and internet processing fees will apply.



The Town Clerk/Tax Collector's office now accepts MasterCard, Visa, American Express, and Discover credit cards; debit cards that display these logos are also accepted. **Please note:** There are additional fees to cover the cost of using a credit or debit card - 2.95% of the total transaction with \$1.50 minimum. These convenience fees go directly to the Town of Lee's third party credit/debit card processor and are not retained by the Town of Lee. Convenience fees cannot be refunded. Cash and checks are still accepted forms of payment and do not require additional fees.

ON SALE AT TOWN HALL!

The Early Mills and Industry of Lee, NH



The Fibreboard Mill at Wadleigh Falls

By: Richard Wellington

Compiled and researched by Randy Stevens and Susan Wellington

Proceeds to benefit the Heritage Commission



LEE PUBLIC LIBRARY

You like us at the library, now like us on Facebook!



LIBRARY REGULAR HOURS

Monday, Tuesday, Wednesday: 12:00 – 8:00 pm

Thursday, Friday: 10:00 am – 5:00 pm

Saturday: 10:00 am – 3:00 pm

WEDNESDAY, NOVEMBER 26TH OPEN NOON – 5 PM
CLOSED NOVEMBER 27TH & 28TH FOR **THANKSGIVING**

The library would like to revive its **Armchair Traveler** series. Are there any interested travelers out there who would like to share their adventures with people in the community? If so, please contact the library at 659-2626 or email us at leelibrary@comcast.net.



Thursday & Friday at 10:30 am

These fun 30 – 40 minute programs include stories, songs, finger plays, flannel board and a craft. Registration is not required.



NORTHEAST WOODLAND INDIANS

Saturday, November 15TH 10:30 am

In this wonderful, interactive program offered by the Mt. Kearsarge Indian Museum, we will learn about the lives of Northeast Woodland Indians, view and handle Native American artifacts and listen to a Native American story. Grades K-4. Adults welcome. Please register.

“Creating Connections: Building Community through the Arts”

The following is the first in a series of workshops on a variety of art techniques.



FRESH FLOWER CORNUCOPIA CENTERPIECES

Saturday, November 22nd 10:30 am - Noon

Tina Sawtelle will guide participants in creating a centerpiece for their Thanksgiving table. Ages 15 and up. **Please register. Limited to 12.** Spaces are filling up fast so if you are interested in participating call 659-2626. Sponsored by the Friends of the Lee Library.



MANDALAS FOR ADULTS

Tuesday, December 2nd 6:00 – 8:00 pm

Create a little harmony in your life by making a mandala. The word mandala from Sanskrit means “sacred circle.” Making a circle brings order to things and helps to catch and focus your attention inside the circle so you are distracted by what is outside of it. This focus helps to relax the body and release natural healing processes. **Ages 15 and up.** Please register by calling 659-2626. Limited to 12. Sponsored by the Friends of the Lee Library.

ON GOING PROGRAMS



NO FOOLIN, JUST FUN – ADULT GAME DAY

Tuesdays, Next day November 18th at 9:30 am

Come join the fun, make new friends and learn some new games. All are welcome! Open to all adults 18 and older.



STORY TREKKERS

Tuesdays 3:30 – 4:30 pm

Ages 6-10

Read a variety of authors and award-winning books. Snack, games and a craft included. Most way students ride bus 23. **Please register. This program is currently filled and has a waiting list.**



KNITTING GET TOGETHER

Tuesdays, 6:30 - 8:00 pm

Come and join other knitters for an evening of knitting and socializing. Bring that project you've been meaning to finish and make some new friends.

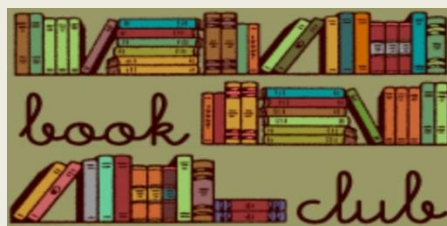


KNITTING FOR 50+

ALTERNATE WEDNESDAYS, NEXT DECEMBER 3RD 9AM

A drop-in group will meet at the library. Help is available from instructor, Donna Kay. All levels welcome.

Offered by the Senior Advisory Committee in conjunction with the Lee Library.



ROCKIN' READERS BOOK CLUB

Thursdays 3:00 – 4:00 pm

5th & 6th Graders

Book discussion – read and discuss a different book each month. Take bus 21. Please register.



DONATION ANNOUNCEMENT

Beginning on November 1, 2014, the library will no longer accept book donations for the book sale until the spring of 2015. Our book sale shelves are bursting at the seams, so please feel free to come by anytime there isn't a program going on downstairs and fill a bag.



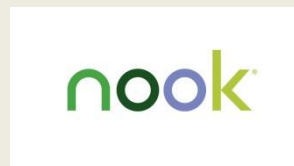
MARIPOSA MUSEUM AND WORLD CULTURE CENTER Peterborough, NH

Thanks to the generosity of the Friends of the Lee Public Library, we now have a membership to the Mariposa Museum and World Culture Center. The pass admits 2 adults and 2 children for free. The museum is currently running an exhibit called “World of Chocolate” until January 15, 2015. Check out their website www.mariposamuseum.org.



CURRIER MUSEUM OF ART Manchester, NH

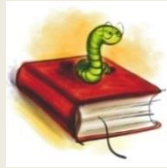
Our pass to the Currier courtesy of the Friends of the Lee Public Library, admits up to 2 adults for free. Children under 18 are also free. Beginning September 20, 2014 - January 5, 2015, the museum is presenting an exhibit by M.C. Escher called “Reality and Illusion”. There will be a \$5 special exhibition charge to view the exhibit. Upcoming exhibits include, Still Life: 1970’s Photorealism, Audubon’s Wild Animals of North America, Witness to History: James Nachtwey Photography, and Killer Heels: The Art of the High Heeled Shoe. Check out their website for all their programs: www.currier.org.



Did you know the library has a Kindle and a Nook available for checkout? Great opportunity to explore whether or not you like reading on an electronic device!

BOOKWORM DIGEST

Sign up for the Bookworm Digest: A monthly newsletter all about everything going on at Lee Public Library. Send an email to leelibrary@comcast.net to get the Bookworm Digest sent once a month.



Please visit the following link to view all the library's programs: leenh.org/pages/LeeNH_LibraryCal/?formid=158



FRIENDS OF THE LEE LIBRARY

The Friends of Lee Library is a non-profit organization that supports Lee Library activities through memberships and fundraising. Activities include museum passes, children's vacation and summer programs, and adult educational programs. Thanks to your funding, the Friends of Lee Library will continue to support the wonderful activities! Not a member yet? It's easy - [CLICK HERE](#) !

LAMPREY HEALTH CARE SENIOR TRANSPORTATION PROGRAM

Lamprey Health Care's Senior Transportation program provides rides to essential services for individuals over the age of 60 and/or with disabilities. Our handicap-accessible buses take seniors and adults with disabilities to the grocery store, pharmacy, doctor, or bank! For reservations or more information call 1-800-582-7214 or 659-2424 Monday through Friday, 8:00am - 4:00pm or go to lampreyhealth.org/index.php/patient-services/transportation_program



JOIN THE LEE FIRE RESCUE DEPT.

The Department is always looking for new members!

Please stop by the Safety Complex Monday - Friday 8:00 am to 4:00 pm or during one of our training meetings, held on the 2nd and 4th Thursday of each month at 7:00 pm.



EMERGENCY NOTIFICATION SYSTEM

The Town of Lee Police, Fire & Emergency Management will now utilize the emergency notification system known as CODE RED. [CLICK HERE](#) for instructions. Please visit leenh.org to sign up!



CHANNEL 13

Check your local TV channel 13 to view Selectmen’s meetings aired daily at 7:00 am; 2:00 pm; 7:00 pm. [CLICK HERE](#) for more details on Channel 13. [CLICK HERE](#) to view town meetings and videos online through the media site at leenh.org.

Sun	Mon	Tue	Wed	Thu	Fri	Sat
				1	2	3
4	5	6	7	8	9	10
11	12	13	14	15	16	17
18	19	20	21	22	23	24
25	26	27	28	29	30	

MEETING CALENDAR

To view the meeting calendar on leenh.org [CLICK HERE](#)



DISPOSAL OF PRESCRIPTION DRUGS

A drop-off box is available at the Public Safety Complex for unused and unwanted prescriptions.

STRAFFORD COUNTY CITIZEN CORPS HEALTH & SAFETY COUNCIL OF STRAFFORD COUNTY

Click below for good information about Influenza. Click on the “Senior” web page link for more information.

dhhs.nh.gov/dphs/cdcs/influenza/index.htm



FoodPantry

WILKINSON FOOD PANTRY Lee Church Congregational 17 Mast Rd

The food pantry is open to any family in the Town of Lee. The pantry is open the first and third Monday of each month from 6 - 7:00 pm. If there is an emergency please call the Church office at 659-2861. All visits to the pantry are strictly confidential.



Community Action Partnership
Pregnant? New Baby? CAP Can Help!

If you are pregnant, know someone who is, or just had a baby, Community Action can help. We have a free Home Visiting program for teens and women age 25 and under. Call CAP's Home Visiting at 603-516-8108 to learn more or visit www.traffordcap.org.

CAP's COUNTYWIDE LIP SYNC CONTEST

November 14TH Dover High School

Come join us for CAP's First Ever Countywide Lip Sync Contest. Tickets are \$3 per person; families of 4 or more are just \$10. Children 10 & under are free. For entry form and to purchase tickets, go to www.traffordcap.org. All proceeds will benefit the programs and services of Community Action Partnership of Strafford County. Questions? Email Suzanne Weete at sweete@traffordcap.org.

CAP would like to thank these sponsors for underwriting this event: [Kennebunk Savings Bank](#), [D.F. Richard](#), [Liberty Mutual](#), [Federal Savings Bank](#), [Optima Bank & Trust](#), [Centrix Bank](#), [Relyco](#), [Eastern Propane](#) and [Bank of New Hampshire](#)



**FUEL & ELECTRICAL ASSISTANCE
APPOINTMENTS NOW AVAILABLE**

Winter is around the corner and CAP employees are taking appointments for fuel and electrical assistance. Last year, we served nearly 3,900 households. Income-eligible households can get help paying their winter heating bills by applying for fuel assistance now through April 30, 2015. Electrical assistance is available year round. We have flexible hours and locations for appointments. Call today at 603-516-8126 or 603-516-8191. Visit www.straaffordcap.org



Food Pantry
Donations Needed

DONATIONS NEEDED FOR FOOD PANTRIES

We are seeking donations of non-perishable food items, grocery store gift cards and financial donations to help stock our food pantries in Dover, Farmington and Milton. Supplies are critically low yet demand remains very high. To donate, visit www.straaffordcap.org/donate today! Our food pantries serve individuals and families from all over Strafford County.

**BITS of HISTORY from
The NEWMARKET ADVERTISER**

November 16, 1895

Among the vegetables displayed at the recent harvest supper, that of George Dudley deserved special mention. He is a granger of more than average ability in whatever he undertakes, and the great variety and fine appearance of his exhibit was equal to any seen at agricultural fairs.

November 14, 1902

The Republicans elected the entire ticket on November 4th in Lee.

To receive the E-CRIER via email EVERY WEEK go to www.leenh.org, click on Subscribe to E-Alerts and follow the directions to subscribe. It's that easy!
