

TOWN OF LEE, NEW HAMPSHIRE

7 Mast Road
Lee, New Hampshire 03861
(603) 659-5414

November 3, 2017

Lee News & Upcoming
Events

OCTOBER 30, 2017 STORM



GARRITY ROAD



HIGH ROAD



OLD MILL ROAD



SNELL ROAD



TRANSFER STATION ROAD

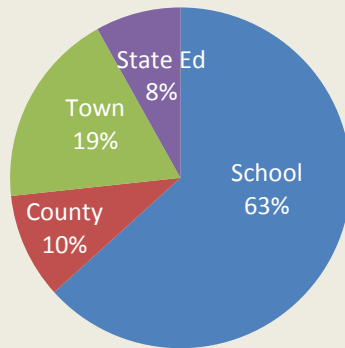


TUTTLE ROAD

PHOTOS BY RANDY STEVENS

THANK YOU TO THE HIGHWAY CREW FOR CUTTING AND HAULING AWAY ALL THE DEBRIS LEFT OVER FROM THIS DEBILITATING STORM! AND THANK YOU TO ALL THE EMERGENCY PERSONNEL FOR THEIR EFFORTS IN KEEPING LEE SAFE! THE RESIDENTS APPRECIATE ALL THAT YOU DO!

2017 Tax Rate



School	County	Town	State Ed
\$19.02	\$2.86	\$5.67	\$2.39

The 2017 Town of Lee Tax Rate has been set at \$29.94.
The tax bills have been mailed out and payment is due by December 1, 2017.

NOVEMBER SELECT BOARD MEETINGS

Monday, November 9th & 20th starting at 6:30 pm

Meetings can now be seen on **YouTube** at www.media.leenh.org



**TOWN OFFICES WILL BE CLOSED FRIDAY, NOVEMBER 10TH
IN OBSERVANCE OF VETERANS DAY**

LIBRARY WILL BE OPEN FRIDAY, NOVEMBER 10TH BUT CLOSED NOVEMBER 11TH

THANK YOU FOR SERVING OUR COUNTRY & PROTECTING OUR FREEDOM!

ATTENTION: THERE WILL **NOT BE AN E-CRIER NEWSLETTER ON NOVEMBER 10TH**

ONE RESIDENT'S BATTLE AGAINST NON-NATIVE INVASIVE PLANT SPECIES

A Walk Offered by the Conservation Commission

Saturday, November 11, 9:00 am



MULTIFLORA ROSE IS GREEN PLANT IN THE FOREGROUND

ORIENTAL BITTERSWEET IS CLIMBING PLANT

PHOTO BY CARL WINDER

Like beings from a horror movie, non-native invasive plants can take over a habitat with devastating results. Displacing native plants, and the animals which rely on them, invasive plants can quickly overwhelm a habitat - replacing a once-healthy diversity of herbs, shrubs and trees with a monoculture. Making up nearly a third of all the plants in New England, non-native invasive species are both an ecological problem and a financial one - with estimated costs in the United States ranging from \$40- \$120 billion each year in damage done to farmlands, forests, and open wild areas such as fields and prairies. In southern New Hampshire the abundance of invasive plants has become a serious problem.

For a number of years, Lee resident Mimi Winder has worked to remove from her beautiful property such invasive plants as oriental bittersweet, multiflora rose, glossy buckthorn, Japanese barberry, and burning bush. She has graciously offered to give a tour of her property and share the history of her battle against these invasives. We'll discuss how she became aware of the problem, what she learned about removing them, what she's done to reduce their population on her land, and her plans for the future.

Please join us at the Winder home on Saturday November 11 at 9:00 a.m. The property is located on Little Hook Road (directions below). Dress for the weather. Comfortable, utilitarian clothing (i.e. suitable for yard work) is recommended; avoid down jackets or vests as they may snag on rogue branches of multiflora rose. Ticks are again active, so light-colored clothing and long socks that can be pulled over pants are recommended. As deer hunting season will have begun, wearing orange may be advisable.

Directions: Take Lee Hook Road from the center of Lee and proceed for 2.3 miles. Take a left onto Little Hook Road, and continue for .23 miles. The Winder residence is on the right - a red farmhouse with an attached barn.



LEE HISTORICAL SOCIETY MUSEUM
OPEN EVERY 3RD SATURDAY 10 AM – 2 PM
LAST DAY NOVEMBER 18TH



HUNTING

Please note it is Hunting Season again! Please be safe and take precautions.
Go to <http://www.wildlife.state.nh.us/hunting/hunt-dates.html> for details.

LEE SELECT BOARD VOTES TO ENACT THE TOWN CENTER VISION COMMITTEE

[CLICK HERE](#) to view the TCVC Charge

Please call the Town Administrator at 603-659-5414 or
email townadministrator@leenh.org with questions.



LEE TOWN COMMISSIONS AND COMMITTEES

**AGRICULTURAL, CONSERVATION, &
RECREATION COMMISSIONS;
ENERGY & SUSTAINABILITY COMMITTEES**

[CLICK HERE](#) for Application

Hand deliver to Town Hall or email application to the Town Secretary at dduval@leenh.org.

COMMITTEE, COMMISSION & BOARD MEETING CALENDAR

Go to www.leenh.org/Pages/LeeNH_MeetingsCal/?formid=158

LIBRARY CALENDAR

Go to http://leenh.org/pages/LeeNH_LibraryCal/?formid=158



The Lee Heritage Commission is currently working on several projects including: assembling and editing the 2018 Lee Wall Calendar, creating a Mission Statement and Collections Policy for the historic Lee Archives, researching and preparing applications for NH State historic recognition for the Lee Town Center buildings (the buildings include the Lee Town Hall, Lee Town Hall Annex, Lee Public Library, Lee Historical Society and the Lee Town Shed). Additionally, we are conducting, recording and transcribing oral interviews with various town elders, to collect oral histories of Lee - as well as investigating the means to have some of the older documents and journals in our collections digitized to make them more accessible to the public. We'll keep you posted as we go!

POLICE REMINDER

Please do not become a victim. WHEN IN DOUBT, DON'T GIVE IT OUT.

The scammers are still working to obtain your information. Do NOT click on any links in emails or provide any personal or banking information either on the telephone or on the internet, unless you initiated the contact. Also, remember the IRS will NEVER call you! They will always send mail!



READY RIDES offer free rides to medical appointments for residents 55+ and those who are disabled and unable to drive. They serve Lee, Barrington, Durham, Madbury, Newmarket, Northwood, Nottingham and Strafford. Please call Meri Schmalz at 224-8719 or email info@readyrides.org for more details about how to help your neighbor. **Volunteers from Lee are needed!**



LEE FIRE RESCUE DEPARTMENT SEEKING CALL FIREFIGHTERS AND EMTS

[CLICK HERE](#) for more information

FIRE DEPARTMENT UPDATE

The Select Board recently approved a new Fee Schedule for the Lee Fire Department.

Please [CLICK HERE](#) for the Fee Schedule

Please [CLICK HERE](#) for the Permitting Checklist and Reference Guide

BURN PERMIT

[CLICK HERE](#) for NH BURN PERMIT RULES AND REGULATIONS
GO TO www.nhfirepermit.com to obtain a fire permit online



WILKINSON FOOD PANTRY

Lee Church Congregational 17 Mast Rd

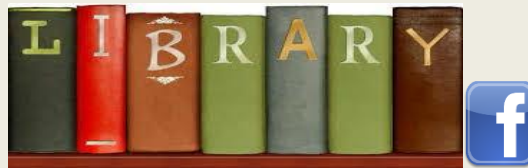
The food pantry is open to **any family** in the towns of Lee, Durham, Newmarket and Nottingham. The pantry is open the 1st & 3rd Monday of each month from 6 - 7:00 pm. If there is an emergency please call the Church office at 659-2861. All visits to the pantry are strictly confidential.



DISPOSAL OF PRESCRIPTION DRUGS

A drop-off is available at the Public Safety Complex to the left of the front entrance for unused and unwanted prescriptions.

Lee Public Library



OPEN FRIDAY, NOVEMBER 10TH

CLOSED SATURDAY, NOVEMBER 11TH for VETERANS DAY

Monday, Tuesday, Wednesday: 12:00 – 8:00 pm

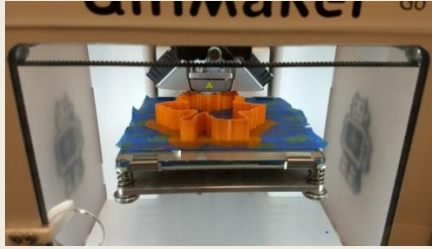
Thursday, Friday: 10:00 am – 5:00 pm

Saturday: 10:00 am – 3:00 pm



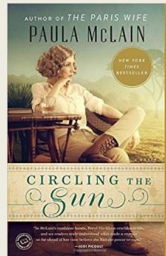
BEGINNING FELTING
Tuesday, November 7th 6:00pm

Have you ever wanted to learn how to make a felted wool creation? Kris Weyrick-Scott, our current artist of the month, will give a brief history of felting and then teach us how to make a felted seahorse. **Class is limited to 10. Please Register at 659-2626.**



3D Printer Class
Friday Nov. 10, 10-11:30
Monday Nov. 13, 5-6:30

The library director will be offering two 3D printing sessions PRIOR to our next ownership of the printer. Please bring your laptop or tablet and learn about thingiverse, TinkerCAD and CURA. This learning session will prepare you for printing an item that takes 1 hour or less when the printer is back in the library on 11/27. Children in grades 4-6 should be accompanied by a parent, anyone else on their own is fine. **Please register by calling 659-2626 or stopping by the library.**



ADULT BOOK DISCUSSION
Monday, November 13th 7:00pm
"Circling the Sun" by Paula McLain

"Famed aviator Beryl Markham is a novelist's dream. . . . [A] wonderful portrait of a complex woman who lived—defiantly—on her own terms."—*People* (Book of the Week)



PET SERIES TALK
Staying Alive – Pet CPR
Tuesday, November 14th 7:00pm

Dr. Karen Woodberry from Oyster River Veterinary Hospital will talk about Pet CPR.



BOUQUET BAR – BUILD YOUR OWN COLOR SPRAY
Saturday, November 18th 11:00am – 1:00pm

Drop by the library any time between 11 a.m. and 1 p.m. and make a hand-tied bouquet. Tina Sawtelle will provide the flowers, and the flower arranging knowhow.

Sponsored in part by the Friends of the Lee Library.



TURKEY DROP-IN-CRAFT
Monday, Nov 13th – Saturday, Nov 18th
Drop by and make a turkey

ONGOING PROGRAMS



STORY TREKKERS
Tuesday Afternoons 3:30 – 4:30pm

This program for **grades K-4** will introduce children to a variety of authors and award-winning books. A snack, games and a craft are also included. Mast Way students may arrange to ride **bus 6** directly to the library after school. Please **register** by calling 659-2626.



ROCKIN' READERS BOOK CLUB
1ST Thursday of each Month
3:30 – 4:30 pm Grades 5-6

Participants will read & discuss a different book each month. Pizza will be served. Students may arrange to take **bus 6** directly to the library after school. If interested, **sign up** by calling 659-2626.



STORY TIME
Thursdays 10:30 am Children ages 2-6

These fun 30-40 minute programs include stories, songs, finger plays, flannel board and a craft. **Registration not required.**



TINY TOTS LAPSIT
Children up to 2 years of age
Fridays, Nov. 10th & 17th at 10:30am

Join us for a baby/toddler lapsit. This 20 minute program offers songs, stories and movement with relaxed time afterwards for play and socializing. **Registration is not required.**



FUN FRIDAYS
3:30 – 4:30 pm Grades K-4

Have fun making puppets and building with Robots and Legos. This is a drop-in program. Mast Way students may arrange to ride **bus 6** from school to the library.

Nov. 3 – Robots

Nov. 10 – No program

Nov. 17. Legos



**NO FOOLIN, JUST FUN
ADULT GAME DAY
Tuesdays 9:30am**

Come join the fun, make new friends and learn some new games. All are welcome! Open to all adults 18 and older.



**KNITTING FOR 50+
1st & 3rd Wednesdays 9:30am
November 15th**

Help is available from instructor Donna Kay. All levels welcome. **Offered by the Senior Advisory Committee and the Lee Public Library.**

**Regional & State
News & Events**



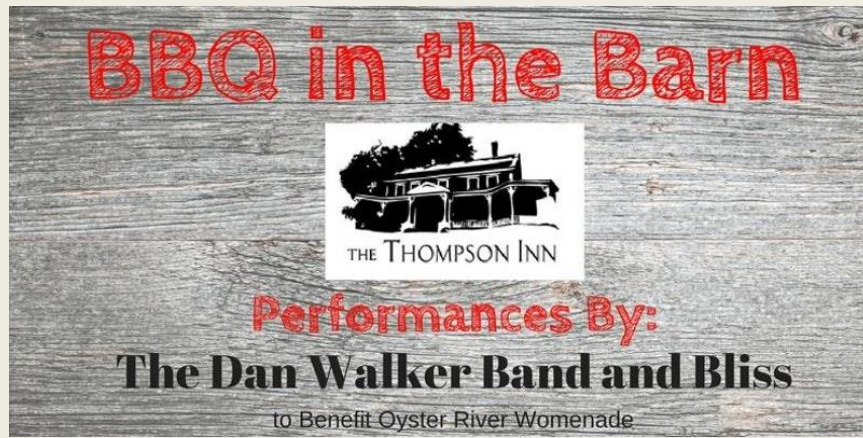
**OYSTER RIVER
HIGH SCHOOL
RELAY FOR LIFE!**

**JOIN US AT FLATBREAD COMPANY IN PORTSMOUTH
TUESDAY, NOVEMBER 7TH 4:00 - 9:00 PM**



**DINE IN OR TAKE OUT AND A
PORTION OF THE PROCEEDS
FROM EVERY PIZZA SOLD WILL
BENEFIT ORHS RELAY FOR
LIFE'S FUNDRAISING GOAL
FOR THE AMERICAN CANCER
SOCIETY!**

THERE WILL BE A RAFFLE AND PRIZES TOO!



BBQ IN THE BARN – TO BENEFIT OYSTER RIVER WOMENADE

Saturday, November 18th 5:00 – 9:00 pm

Thompson Inn & Cyderhouse, 90 Bennet Road, Durham, NH 03824

[CLICK HERE](#) for flyer

Go to www.orwomenade.org

For Tickets go to <https://bbqinthebarn.eventbrite.com>

OYSTER RIVER MIDDLE SCHOOL FACILITIES COMMITTEE

http://orcsd.org/school_board/board_appointed_committees/facility_committee/

**ARTICLE BY OYSTER RIVER COOPERATIVE SCHOOL BOARD CHAIR THOMAS NEWKIRK
REGARDING CURRENT MIDDLE SCHOOL**



LAMPREY RIVER ADVISORY COMMITTEE FALL [NEWSLETTER](#)



NH FISH AND GAME LANDOWNER NEWSLETTER

<http://www.wildnh.com/landshare>



**To receive the E-CRIER via email EVERY WEEK go to, click on Subscribe to
E-Alerts and follow the directions to subscribe. It's that easy!**

ATTENTION!

We heard that there may be Lee residents who wish to see the E-Crier but do not have the internet!! If you have contact with these people kindly direct them to Town Hall for a **printed copy** or to the Library to view it there. If they cannot leave their home please have them call Denise Duval, Town Secretary, at 659-5414 to have it mailed!