

TOWN OF LEE, NEW HAMPSHIRE

7 Mast Road

Lee, New Hampshire 03861

(603) 659-5414

October 31, 2014



**STATE GENERAL ELECTION
NOVEMBER 4TH 7:00 AM - 7:00 PM
LEE PUBLIC SAFETY COMPLEX**



NEW VOTERS may register at the polls on Election Day.



The Town now offers online services for car registration renewals, dog licenses, vital records and property taxes. To access the new online services, please visit the Town of Lee's website at www.leenh.org. Credit/debit cards and ACH payments (bank-to-bank transfers) will be accepted for all online transactions. Credit/debit card and internet processing fees will apply.



The Town Clerk/Tax Collector's office now accepts MasterCard, Visa, American Express, and Discover credit cards; debit cards that display these logos are also accepted. **Please note:** There are additional fees to cover the cost of using a credit or debit card - 2.95% of the total transaction with \$1.50 minimum. These convenience fees go directly to the Town of Lee's third party credit/debit card processor and are not retained by the Town of Lee. Convenience fees cannot be refunded. Cash and checks are still accepted forms of payment and do not require additional fees.

The TRANSFER STATION is seeking a SWAP SHOP VOLUNTEER to cover a morning shift and a PART-TIME PERSON to work Tuesday, Thursday and Saturday.

Call the TS Manager Roger Rice at 659-2239 or the Town Administrator Julie Glover at 659-5414 for details.



OPENINGS still available for THE TOWN OF LEE

- TRUSTEE OF THE TRUST FUNDS
- ADVISORY BUDGET COMMITTEE
- RECREATION COMMISSION

[CLICK HERE](#) for an application
& deliver to the Town Hall

FACILITIES NEEDS ASSESSMENT

THE SELECT BOARD HAS CHOSEN 3 FIRMS TO BE INTERVIEWED ON **NOVEMBER 5TH** STARTING AT **6:00pm** AT THE PUBLIC SAFETY COMPLEX.

THIS AGENDA CAN BE VIEWED AT http://leenh.org/Pages/LeeNH_SelectmenAg/Agd20141105.pdf



THE 5TH ANNUAL SEACOAST VETERANS CONFERENCE

Saturday, November 8th

[CLICK HERE](#) for more information

LEE HISTORICAL SOCIETY & LIBRARY PRESENT

The Story One Dress Can Tell by Astrida Schaeffer

Wednesday, November 12th 7:00 pm Public Safety Complex

Ms. Schaeffer has been working with historic textiles for over twenty years as a curator, reproduction dressmaker, researcher and author. Her website is www.schaefferarts.com. Ms. Schaeffer will tell the story of Celestia Freeman, an 1870's Somersworth, NH woman, who stepped out into society in an elegant dress made possible by the invention of the sewing machine in the home. It is a story of how technology made possible wide innovations and businesses such as pattern making, fashion magazines and textiles. These changes gave women across social levels all they needed to turn the dress from a functional garment into one of status.



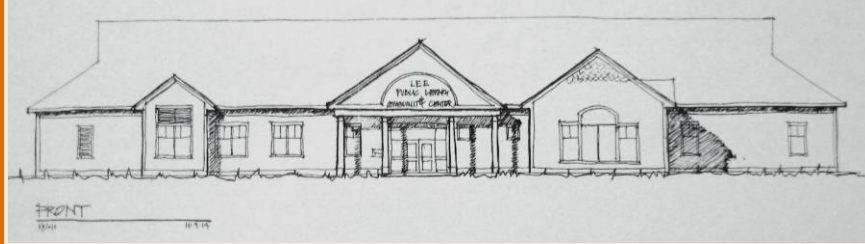
CONSERVATION COMMISSION UPDATE

A Successful Log-Hauling Day in the Town Forest

The log-hauling demonstration last Saturday was a wonderful success. Chuck Cox gave everyone a very interesting lesson in horse-powered log-hauling, as his pony dragged heavy beams to two bridge-rebuilding locations in the Town Forest. Clear blue skies and mild weather, combined with the beauty of the forest in its autumnal colors made for a truly beautiful morning's work. Many thanks to Chuck and all who assisted and/or took part in this engaging and informative demonstration.

With the beams and cross pieces now on site, part two of the bridge-rebuilding process - the actual re-building - is next on the agenda. This is slated to take place in mid-November. Folks interested in participating in bridge-building are welcome to attend. Check future E-Crier notices and the kiosk at the Town Forest for updates regarding the date and time of this event.

LIBRARY TRUSTEES' CORNER



THE LIBRARY AS PLACE

The library is first and foremost a place... a place that promotes development in society. It is the family room of a community. That's the vision, that's the future. —AKHTAR BADSHAH

It continues to be the physical presence of the library that anchors it most firmly in the community. Research and experience show that geography and place still matter.

The Pew Research Center's survey on library usage found that a large proportion of Americans, even those who seldom visit a library, consider libraries important institutions in their geographic communities and believe that their communities would suffer a loss if the library closed.

In an increasingly virtual world, physical library places are community assets. They:

- ESTABLISH PERSONAL CONNECTIONS that help define community needs and interests
- PROVIDE AN ANCHOR for economic development and neighborhood revitalization
- STRENGTHEN COMMUNITY IDENTITY in ways that yield significant return on investment, including drawing people together for diverse purposes
- PROVIDE A SAFE AND TRUSTED LOCATION for community services
- CREATE CONNECTING PLACES that draw people together

The public library is a place for the community to experiment and collaborate, to gather and engage, and to explore and confront important community issues. With its deep knowledge and relationships in the community, its physical presence and its platform, the public library is playing an important role in sustaining the civic health of the community.

From the Aspen Institute dialogue on Public Libraries report



**SENIOR ADVISORY COMMITTEE UPDATE
FAMILY NATURE WALK AT LITTLE RIVER PARK
SATURDAY, NOVEMBER 1, 9:30 AM**

By November, the vibrant colors of early autumn have faded to more muted golds and russets, and nature's quiet time of year begins to take hold. While our resident songbirds have left for their wintering grounds, migrants from the north continue to pass through. With its rich supply of seeds and berries Little River Park is a favorite stopping place for many birds. Last month the patch habitat was twitching with various species of sparrows and we were entertained by the broken-voiced songs of "teenaged" white-throated sparrows. Now these seed eaters are joined by a related species for which New Hampshire is a wintering ground - the dark eyed junco. These charcoal gray and white "snow birds" nest in Canada and the alpine meadows of the Appalachians. Their arrival means that the cold, dark season is fast approaching, but with their striking plumage and constant chipping calls, juncos are one of winter's consolations. We'll be on the lookout for their flashing white tail feathers as we walk the park. In a nod to Halloween, we'll also take a look at a few animal skulls! We meet in the LRP parking lot at 9:30. All ages welcome!

At the recent knitting gathering, the Lee Library tables were surrounded by thirteen able knitters. With fall-like weather and some of us finishing up yard/garden chores we gather for conversation and knitting advice. Some of us really need to get "bailed-out" while others just need a bit of advice about patterns and yarns. Donna Kay continues to add to the flavor of the group with her stories of farm life and her knitting expertise that she so kindly shares. The dates for the next three meetings are November 12th, 19th and December 3rd at 9:00 - 11:00 am. Not too late to start a scarf or hat for holiday giving! The sessions are co-sponsored by the Lee Library and the Senior Advisory Committee.

You are most welcome to visit and listen or share ideas with the Senior Advisory Committee at any of their meetings. The next one is scheduled for December 10th at 9:00 am at the Safety Complex. Let us know what your needs are—we may be able to find someone that has a solution to your problem. You may even have a nifty idea that would enhance life in our community!

POLICE DEPARTMENT UPDATE



NH'S NEW HANDS-FREE ELECTRONIC DEVICE LAW EFFECTIVE 7/1/2015

[CLICK HERE](#) for details

FIRE DEPARTMENT NEWS



[CLICK HERE](#) for BURNING PERMIT CHECKLIST

READY RIDES

NEEDS volunteer DRIVERS from LEE!

READY RIDES volunteer drivers offer free rides to medical appointment for residents 55+ and those who are disabled and unable to drive. They serve Lee, Barrington, Durham, Madbury, Newmarket, Northwood, Nottingham and Strafford.

They need volunteer drivers from Lee! This program receives the support of the town budget and is a great opportunity for active residents with minimal amount of time to volunteer. Drivers receive 25 cents per mile and can pick as many or as few rides as they want to do. Drivers must be at least 25 years old, have a valid driver's license and a favorable driving record. You must have a legally registered, inspected and insured vehicle to transport the rider. You will need to complete a volunteer application that includes a motor vehicle and criminal background check. Volunteer Orientation meetings are held frequently. Please call Meri Schmalz at 224-8719 or email info@readyrides.org for information about this great opportunity to help out your neighbor.

THE TOWN OF LEE



LEE HISTORICAL SOCIETY MUSEUM



OPEN EVERY 3RD SATURDAY, NEXT DATE **NOV 15TH**
10:00 AM - 2:00 PM

HISTORY OF EDUCATION IN THE TOWN OF LEE

Phyllis White needs information & pictures:
Call Phyllis at 659-2883 or email PhylliseWhite@comcast.net

1. NORTH LEE - Lane's School House #1 or the Turnpike School, Caverno School House #2 or Mastway, North Lee School
2. Those who attended MAST WAY SCHOOL from 1960-1967
3. Pictures to scan and return: all school buildings, class pictures (including Town Hall years) and teachers



LEE SCHOOL HOUSE 1900

ON SALE AT TOWN HALL!

The Early Mills and Industry of Lee, NH



The Fibreboard Mill at Wadleigh Falls

By: Richard Wellington

Compiled and researched by Randy Stevens and Susan Wellington

THEY ARE GOING LIKE HOT CAKES!

Proceeds to benefit the Heritage Commission



LEE PUBLIC LIBRARY

You like us at the library, now like us on Facebook!



LIBRARY REGULAR HOURS

Monday, Tuesday, Wednesday: 12:00 – 8:00 pm

Thursday, Friday: 10:00 am – 5:00 pm

Saturday: 10:00 am – 3:00 pm

CLOSED TUESDAY, NOVEMBER 11TH
IN OBSERVANCE OF VETERAN'S DAY

WEDNESDAY, NOVEMBER 26TH OPEN NOON – 5 PM
CLOSED NOVEMBER 27TH & 28TH FOR **THANKSGIVING**



This is a busy time of year for many families. If you don't have time to read a book, consider reading one of our 51 different magazines or listening to our abundant collection of audio books! Come in and check them out!



Friday, October 31ST 10:30 am

These fun 30 – 40 minute programs include stories, songs, finger plays, flannel board and a craft. Registration is not required.



TURKEY DROP-IN CRAFT

Saturday, November 8TH

Gobble gobble! Stop by and make a tom turkey.



NORTHEAST WOODLAND INDIANS

Saturday, November 15TH 10:30 am

In this wonderful, interactive program offered by the Mt. Kearsarge Indian Museum, we will learn about the lives of Northeast Woodland Indians, view and handle Native American artifacts and listen to a Native American story. Grades K-4. Adults welcome. Please register.



THE STORY ONE DRESS CAN TELL

Wednesday, November 12TH 7:00 pm

Lee Safety Complex

The 1870s dress is the centerpiece of this exploration of how a woman of limited means could make the clothes that could make a woman. The story behind the dress is that of the booming, innovative 19th century with all its new ideas and new possibilities. Join Astrida Schaeffer, who has been working with historic textiles for over 25 years as she tells the story of Celestia Freeman, a textile mill overseer's wife, who broke the barriers of social class making dresses using a sewing machine. Co-sponsored by the Friends of the Lee Public Library and the Lee Historical Society.

“Creating Connections: Building Community through the Arts”

The following is the first in a series of workshops on a variety of art techniques.



FRESH FLOWER CORNUCOPIA CENTERPIECES

Saturday, November 22nd 10:30 am - Noon

Tina Sawtelle will guide participants in creating a centerpiece for their Thanksgiving table. Ages 15 and up. **Please register. Limited to 12.** Spaces are filling up fast so if you are interested in participating call 659-2626. Sponsored by the Friends of the Lee Library.

ON GOING PROGRAMS



NO FOOLIN, JUST FUN – ADULT GAME DAY

Tuesdays, Next day November 4th at 9:30 am

Come join the fun, make new friends and learn some new games. All are welcome! Open to all adults 18 and older.



STORY TREKKERS
Tuesdays 3:30 – 4:30 pm
Ages 6-10

Read a variety of authors and award-winning books. Snack, games and a craft included. Most way students ride bus 23. **Please register. This program is currently filled and has a waiting list. Please note there will be no program on November 11th due to the holiday.**



KNITTING GET TOGETHER
Tuesdays, 6:30 - 8:00 pm

Come and join other knitters for an evening of knitting and socializing. Bring that project you've been meaning to finish and make some new friends.

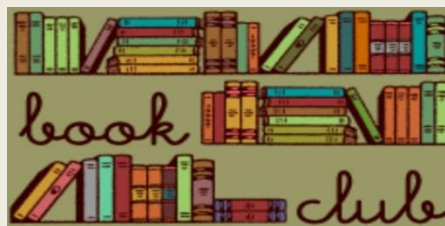


KNITTING FOR 50+

ALTERNATE WEDNESDAYS, NEXT NOV 12TH 9AM

A drop-in group will meet at the library. Help is available from instructor, Donna Kay. All levels welcome.

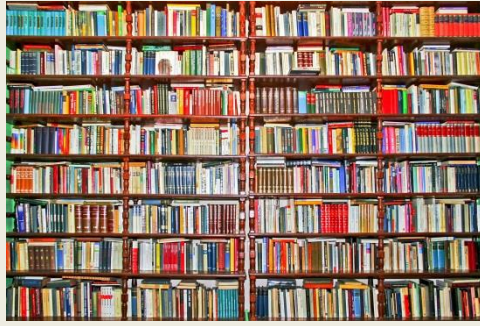
Offered by the Senior Advisory Committee in conjunction with the Lee Library.



ROCKIN' READERS BOOK CLUB

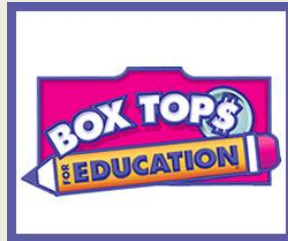
Thursdays 3:00 – 4:00 pm
5th & 6th Graders

Book discussion – read and discuss a different book each month. Take bus 21. **Please register.**



DONATION ANNOUNCEMENT

Beginning on November 1, 2014, the library will no longer accept book donations for the book sale until the spring of 2015. Our book sale shelves are bursting at the seams, so please feel free to come by anytime there isn't a program going on downstairs and fill a bag.



BOX TOPS FOR EDUCATION

Lee Public Library is helping Mast Way Elementary's PTO by collecting box tops for the "Box Tops for Education" Program. Since 1996, the program has helped schools across America earn cash for the things they need. Box tops come from a wide variety of sources including paper towels, flour and more! To see other box top possibilities visit:

<http://www.boxtops4education.com/products/participating-products>

Drop your box tops off at the library and help our school out!



MARIPOSA MUSEUM AND WORLD CULTURE CENTER

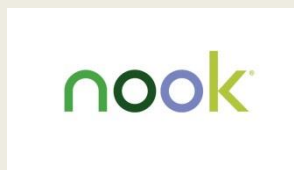
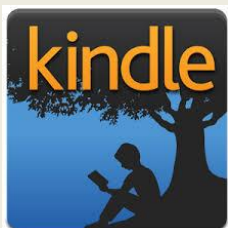
Peterborough, NH

Thanks to the generosity of the Friends of the Lee Public Library, we now have a membership to the Mariposa Museum and World Culture Center. The pass admits 2 adults and 2 children for free. The museum is currently running an exhibit called "World of Chocolate" until January 15, 2015. Check out their website www.mariposamuseum.org.



CURRIER MUSEUM OF ART Manchester, NH

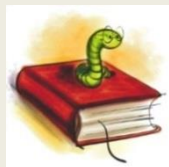
Our pass to the Currier courtesy of the Friends of the Lee Public Library, admits up to 2 adults for free. Children under 18 are also free. Beginning September 20, 2014 - January 5, 2015, the museum is presenting an exhibit by M.C. Escher called "Reality and Illusion". There will be a \$5 special exhibition charge to view the exhibit. Upcoming exhibits include, Still Life: 1970's Photorealism, Audubon's Wild Animals of North America, Witness to History: James Nachtwey Photography, and Killer Heels: The Art of the High Heeled Shoe. Check out their website for all their programs: www.currier.org.



Did you know the library has a Kindle and a Nook available for checkout? Great opportunity to explore whether or not you like reading on an electronic device!

BOOKWORM DIGEST

Sign up for the Bookworm Digest: A monthly newsletter all about everything going on at Lee Public Library. Send an email to leelibrary@comcast.net to get the Bookworm Digest sent once a month.



Please visit the following link to view all the library's programs:
leenh.org/pages/LeeNH_LibraryCal/?formid=158



FRIENDS OF THE LEE LIBRARY

The Friends of Lee Library is a non-profit organization that supports Lee Library activities through memberships and fundraising. Activities include museum passes, children's vacation and summer programs, and adult educational programs. Thanks to your funding, the Friends of Lee Library will continue to support the wonderful activities! Not a member yet? It's easy - [CLICK HERE](#) !

LAMPREY HEALTH CARE SENIOR TRANSPORTATION PROGRAM

Lamprey Health Care's Senior Transportation program provides rides to essential services for individuals over the age of 60 and/or with disabilities. Our handicap-accessible buses take seniors and adults with disabilities to the grocery store, pharmacy, doctor, or bank! For reservations or more information call 1-800-582-7214 or 659-2424 Monday through Friday, 8:00am - 4:00pm or go to lampreyhealth.org/index.php/patient-services/transportation_program



JOIN THE LEE FIRE RESCUE DEPT.

The Department is always looking for new members!

Please stop by the Safety Complex Monday - Friday 8:00 am to 4:00 pm or during one of our training meetings, held on the 2nd and 4th Thursday of each month at 7:00 pm.



EMERGENCY NOTIFICATION SYSTEM

The Town of Lee Police, Fire & Emergency Management will now utilize the emergency notification system known as CODE RED. [CLICK HERE](#) for instructions. Please visit leenh.org to sign up!



CHANNEL 13

Check your local TV channel 13 to view Selectmen's meetings aired daily at 7:00 am; 2:00 pm; 7:00 pm. [CLICK HERE](#) for more details on Channel 13. [CLICK HERE](#) to view town meetings and videos online through the media site at leenh.org.

Sun	Mon	Tue	Wed	Thu	Fri	Sat
			1	2	3	
4	5	6	7	8	9	10
11	12	13	14	15	16	17
18	19	20	21	22	23	24
25	26	27	28	29	30	

MEETING CALENDAR

To view the meeting calendar on leenh.org [CLICK HERE](#)



DISPOSAL OF PRESCRIPTION DRUGS

A drop-off box is available at the Public Safety Complex for unused and unwanted prescriptions.

STRAFFORD COUNTY CITIZEN CORPS HEALTH & SAFETY COUNCIL OF STRAFFORD COUNTY

Click below for good information about Influenza. Click on the "Senior" web page link for more information.

dhhs.nh.gov/dphs/cdcs/influenza/index.htm



WILKINSON FOOD PANTRY Lee Church Congregational 17 Mast Rd

The food pantry is open to any family in the Town of Lee. The pantry is open the first and third Monday of each month from 6 - 7:00 pm. If there is an emergency please call the Church office at 659-2861. All visits to the pantry are strictly confidential.



Community Action Partnership
Pregnant? New Baby? CAP Can Help!

If you are pregnant, know someone who is, or just had a baby, Community Action can help. We have a free Home Visiting program for teens and women age 25 and under. Call CAP's Home Visiting at 603-516-8108 to learn more or visit www.traffordcap.org.

CAP's COUNTYWIDE LIP SYNC CONTEST

November 14TH Dover High School

Come join us for CAP's First Ever Countywide Lip Sync Contest. Tickets are \$3 per person; families of 4 or more are just \$10. Children 10 & under are free. For entry form and to purchase tickets, go to www.traffordcap.org. All proceeds will benefit the programs and services of Community Action Partnership of Strafford County. Questions? Email Suzanne Weete at sweete@traffordcap.org.

CAP would like to thank these sponsors for underwriting this event: [Kennebunk Savings Bank](#), [D.F. Richard](#), [Liberty Mutual](#), [Federal Savings Bank](#), [Optima Bank & Trust](#), [Centrix Bank](#), [Relyco](#), [Eastern Propane](#) and [Bank of New Hampshire](#)



FUEL & ELECTRICAL ASSISTANCE APPOINTMENTS NOW AVAILABLE

Winter is around the corner and CAP employees are taking appointments for fuel and electrical assistance. Last year, we served nearly 3,900 households. Income-eligible households can get help paying their winter heating bills by applying for fuel assistance now through April 30, 2015. Electrical assistance is available year round. We have flexible hours and locations for appointments. Call today at 603-516-8126 or 603-516-8191. Visit www.traffordcap.org



Food Pantry
Donations Needed

YOU CAN HELP!

DONATIONS NEEDED FOR FOOD PANTRIES

We are seeking donations of non-perishable food items, grocery store gift cards and financial donations to help stock our food pantries in Dover, Farmington and Milton. Supplies are critically low yet demand remains very high. To donate, visit www.straaffordcap.org/donate today! Our food pantries serve individuals and families from all over Strafford County.

**BITS of HISTORY from
The NEWMARKET ADVERTISER**

October 27, 1911

“Those, though in highest places, who slight and disoblige their friends shall infallibly come to know the value of them by having none when they shall have most need of them.”

To receive the E-CRIER via email EVERY WEEK go to www.leenh.org, click on Subscribe to E-Alerts and follow the directions to subscribe. It's that easy!
