

# TOWN OF LEE, NEW HAMPSHIRE

7 Mast Road

Lee, New Hampshire 03861

(603) 659-5414

October 17, 2014

## **SHOUT OUT TO ONE OF OUR OWN JOSH STEVENS!**

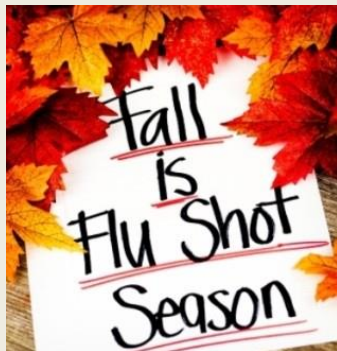


Foster's front page news reports a woman, having driven into the Oyster River, was pulled out by those passing by. Joshua Stevens, who works at the Lee Transfer Station, was one of those Good Samaritans. Kudo's to Josh! Click below to read more.

[http://www.fosters.com/apps/pbcs.dll/article?AID=/20141013/GJNEWS\\_01/141019822/-1/fosnews1403](http://www.fosters.com/apps/pbcs.dll/article?AID=/20141013/GJNEWS_01/141019822/-1/fosnews1403)

[http://www.fosters.com/apps/pbcs.dll/article?AID=/20141015/GJNEWS\\_01/141019706/-1/FosNEWS02&template=GreatBayRegion](http://www.fosters.com/apps/pbcs.dll/article?AID=/20141015/GJNEWS_01/141019706/-1/FosNEWS02&template=GreatBayRegion)

\*\*\*\*\*



**FLU VACCINE CLINIC**

**OCTOBER 20<sup>TH</sup> 10:00 - 2:00 PM**

**Public Safety Complex**

**Sponsored by the Sr. Advisory Committee & Walgreens**

**Generally covered by Medicare Part D**

**Other insurance plans may be accepted**

**Be sure to bring your card**

**\$25 for those without insurance**

**ALL AGES WELCOME**

THE NEW ACCESSIBLE SWINGS AND DIGGER  
HAVE BEEN INSTALLED AT LITTLE RIVER PARK!



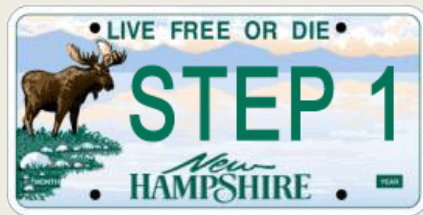
Thank you to the Highway Department for all the hard work it took to get this equipment in just right!

We would love to hear your feedback.  
Please call 659-5414 or email the Town Secretary at [dduval@leenh.org](mailto:dduval@leenh.org) to let us know how much you enjoy the playground!

**MONDAY, 10/20/2014**  
**THE TOWN CLERK / TAX COLLECTOR'S**  
**OFFICE WILL ACCEPT**  
**CREDIT, DEBIT CARDS &**  
**NEW ONLINE 24/7 SERVICES**



Starting October 20, 2014, the Town Clerk/Tax Collector's office will accept credit and debit cards. MasterCard, Visa, American Express and Discover credit cards and debit cards that display these logos will be accepted. *Please note:* There are additional fees to cover the cost of using a credit or debit card - 2.95% of the total transaction with \$1.50 minimum. These convenience fees go directly to the Town of Lee's third party credit/debit card processor and are not retained by the Town of Lee. Convenience fees cannot be refunded. Cash and checks are still accepted forms of payment and do not require additional fees.



Also starting October 20, 2014, we will begin offering online services for car registration renewals, dog licenses, vital records and property taxes. To access the new online services, please visit the Town of Lee's website at [www.leenh.org](http://www.leenh.org). Credit/debit cards and ACH payments (bank-to-bank transfers) will be accepted for all online transactions. Credit/debit card and internet processing fees will apply.

\*\*\*\*\*

**OPENINGS still available for THE TOWN OF LEE**

- **TRUSTEE OF THE TRUST FUNDS**
- **ADVISORY BUDGET COMMITTEE**
- **RECREATION COMMISSION**

**[CLICK HERE](#) for an application**  
**& deliver to the Town Clerk's Office**  
**Monday 8-6pm, Wednesday 8-4pm or**  
**Friday 8-4pm**

\*\*\*\*\*

## PSNH TRANSMISSION AIR PATROLS

October 14<sup>th</sup> - 17<sup>th</sup>

PSNH Transmission is planning on performing fall maintenance air patrols of all the 345/115 KV lines throughout PSNH territory including the seacoast area. Because the specific locations that the air patrols will be going through on each day is dependent on the weather this week, we are not able to narrow down the date for each town. However, they are scheduled to be completed this week. This is not related to the Northern Pass Project.

\*\*\*\*\*



## LAMPREY RIVER WATERSHED ASSOCIATION ANNUAL MEETING

Friday, October 17<sup>th</sup> 6:00 pm

Jeremiah Smith Grange Hall

“Keeping our water clean is everyone’s responsibility” is the theme with Peter Wellenberger of Great Bay Stewards as the speaker. The program includes honoring the leadership of Save Our Groundwater and Neighborhood Guardians for their work in protecting the region’s groundwater. LRWA will highlight the organization’s accomplishments and recognize water quality volunteers. There will be raffle items from local businesses. Enjoy a spaghetti supper with homemade desserts. Tickets \$10 per person. Register at 659-9363 or email [volunteer@lrwa-nh.org](mailto:volunteer@lrwa-nh.org).

\*\*\*\*\*

## 4<sup>TH</sup> ANNUAL KREMPELS KING OF THE ROAD CHALLENGE CHARITY BICYCLE RIDE

Saturday, October 18<sup>th</sup> 9:00 am start time

The ride starts and finishes at Timberland in Stratham. The route again comes through Lee: Camp Lee > Route 152 W > Demeritt > Cartland > Lee Hill > Wednesday Hill. Expect 375+ riders this year but, by the time they reach Lee, they should be fairly spread out. All corners have been marked with (pole mounted) arrows and motorist caution signs have been posted during the week before the event. All signs should be removed by a sweep vehicle that day or at least within 24 hours. Riders are instructed to obey the rules of the road.

\*\*\*\*\*



## OCTOBER HARVEST SUPPER

Saturday, October 18<sup>th</sup> 5:00 – 7:00 pm

Lee Church Congregational

Join us for a delicious meal of Baked Chicken, Squash, Peas, Cran-apple Sauce, Beverages, Rolls, Apple Crisp with Topping. Adults \$8; Seniors \$7; Children under 12 years \$5. This is a fundraiser for the Youth Group Mission Trip. In July the Youth Group traveled to Litchfield, NH for a week to help members of the community with home repairs. The group can't wait to go back to help again in 2015.

\*\*\*\*\*

## CONSERVATION COMMISSION UPDATE

Old-Fashioned Log-Hauling Demonstration

Saturday, October 25<sup>th</sup> at Town Forest

Several of the bridges on the trails in the Town Forest are in badly in need of repair, and one of the most daunting tasks is transporting logs to bridge rebuilding sites. Fortunately a time-honored, effective and engaging method for transporting these logs is available to us: horse power. Using his team of horses to haul logs to the bridge sites, Chuck Cox will give a demonstration of the art of old-fashioned horse-powered log-hauling - an environmentally-friendly, low-impact logging practice. The event is tentatively scheduled for Saturday, October 25, but folks interested in attending/participating, are advised to check next week's E-Crier and/or the kiosk by the baseball diamond near the transfer station for updated information.

\*\*\*\*\*

**TRICK OR TREAT IN LEE**  
**OCTOBER 30<sup>TH</sup> 5:00 - 7:00 PM**



\*\*\*\*\*

## FIRE DEPARTMENT NEWS



[CLICK HERE](#) FOR HALLOWEEN SAFETY MESSAGE  
[CLICK HERE](#) for BURNING PERMIT CHECKLIST

\*\*\*\*\*

### FACILITIES NEEDS ASSESSMENT

ON OCTOBER 13<sup>TH</sup>, THE BOARD REVIEWED 5 SUBMITTALS AND CHOSE 3 TO BE INTERVIEWED ON **NOVEMBER 5<sup>TH</sup>** STARTING AT 6:00pm AT THE PUBLIC SAFETY COMPLEX. THIS AGENDA CAN BE VIEWED AT [http://leenh.org/Pages/LeeNH\\_SelectmenAg/Agd20141105.pdf](http://leenh.org/Pages/LeeNH_SelectmenAg/Agd20141105.pdf)

\*\*\*\*\*



### THE 5<sup>TH</sup> ANNUAL SEACOAST VETERANS CONFERENCE

**Saturday, November 8<sup>th</sup>**

[CLICK HERE](#) for more information

\*\*\*\*\*

### LEE HISTORICAL SOCIETY & LIBRARY PRESENT

*The Story One Dress Can Tell* by Astrida Schaeffer

Wednesday, November 12<sup>th</sup> 7:00 pm Public Safety Complex

Ms. Schaeffer has been working with historic textiles for over twenty years as a curator, reproduction dressmaker, researcher and author. Her website is [www.schaefferarts.com](http://www.schaefferarts.com). Ms. Schaeffer will tell the story of Celestia Freeman, an 1870's Somersworth, NH woman, who stepped out into society in an elegant dress made possible by the invention of the sewing machine in the home. It is a story of how technology made possible wide innovations and businesses such as pattern making, fashion magazines and textiles. These changes gave women across social levels all they needed to turn the dress from a functional garment into one of status. Note that this is the 2<sup>nd</sup> Wednesday of the month as opposed to the typical meeting day of the 1<sup>st</sup> Wednesday.

\*\*\*\*\*

## UNH COOPERATIVE EXTENSION UPDATE

### EMERALD ASH BORER (EAB) IS ON THE MOVE

Because EAB adults were found in Salem, NH as of October 9, the EAB quarantine was expanded from Merrimack to Rockingham County and also that part of eastern Hillsborough including and east of the Everett Turnpike and the Route 293 loop around Manchester. The parts of Hillsborough County added to the quarantine include all or portions of Pelham, Hudson, Nashua, Litchfield, Merrimack, Bedford, and Manchester. Whenever EAB is found in a county, federal law requires the entire county be quarantined. Parts of a county can be quarantined for other reasons and including this small section of Hillsborough County was deemed to facilitate commerce without greatly adding to the threat of the spread of the insect. EAB was recently found in Hopkinton, NH which is in Merrimack County and that find won't result in a change of quarantine. It has resulted in a change in the management zone map and many residents of Hopkinton and surrounding communities are now in the "generally infested area," where before they were in the "potential expansion area." UNH Cooperative Extension's, Tim Fleury, and the NH Division of Forests & Lands, Molly Heuss, are meeting with affected residents and town officials to inform them of the find and suggest management strategies. First on a landowner's "to do" list is to look for ash and decide if it is high-valued or not. Value is subjective and can be for economic or personal reasons. At [nhbugs.org](http://nhbugs.org) we review effective insecticides for use with landscape trees. Of course, the "potential expansion area" is inching outward into the surrounding towns (see map for the edges of the zones). The potential expansion area is the zone where EAB isn't known to be, but the area is within 10 miles of the outer limits of the known infestation and there is a high probability EAB will spread naturally to this zone within a few years. Recommendations for people in this zone include looking for ash and treating high-value landscape ash with an approved insecticide and developing and implementing a management plan for the ash (and other trees) on your woodlot.

Some disappointing news—on October 8, NH Division of Forests & Lands staff found evidence of EAB in Weare and those of you familiar with NH counties know that Weare is in Hillsborough County. As of now, this find is considered "unconfirmed" since finds in new counties must be confirmed by an APHIS entomologist before quarantines are imposed. Once that confirmation happens, the state will proceed to quarantine all of Hillsborough County.

We will keep you informed through this E-News and [www.nhbugs.org](http://www.nhbugs.org) and thank you to all who continue to look and report suspect trees and insects on [www.nhbugs.org](http://www.nhbugs.org).

\*\*\*\*\*

## TRANSFER STATION NEWS

The Swap Shop has lost a dedicated volunteer, Roberta Platenik, who passed away suddenly this past weekend. Arrangements are being taken care of by Kent & Palczar in Newmarket and a service is expected sometime next week. Our condolences go out to her family and friends.

\*\*\*\*\*

## POLICE DEPARTMENT UPDATE



## NH'S NEW HANDS-FREE ELECTRONIC DEVICE LAW EFFECTIVE 7/1/2015

[CLICK HERE](#) for details

\*\*\*\*\*

## READY RIDES

### NEEDS volunteer DRIVERS from LEE!

READY RIDES volunteer drivers offer free rides to medical appointment for residents 55+ and those who are disabled and unable to drive. They serve Lee, Barrington, Durham, Madbury, Newmarket, Northwood, Nottingham and Strafford.

They need volunteer drivers from Lee! This program receives the support of the town budget and is a great opportunity for active residents with minimal amount of time to volunteer. Drivers receive 25 cents per mile and can pick as many or as few rides as they want to do. Drivers must be at least 25 years old, have a valid driver's license and a favorable driving record. You must have a legally registered, inspected and insured vehicle to transport the rider. You will need to complete a volunteer application that includes a motor vehicle and criminal background check of age. Volunteer Orientation meetings are held frequently. There is one on Friday, October 10<sup>th</sup> at the Barrington Library at 3:00 pm. If you are unable to make this meeting, please call Meri Schmalz at 224-8719 or email [info@readyrides.org](mailto:info@readyrides.org) for information about this great opportunity to help out your neighbor.

\*\*\*\*\*



## SENIOR ADVISORY COMMITTEE UPDATE

### FAMILY NATURE WALK AT LITTLE RIVER PARK

Family Nature Walks will continue at Little River Park on the first Saturday of each month at 9:30 am. Other Saturday weekly walks at 8:00 am are discontinued for the time being.

This week as we walked through an area where the trail is sandy and supports numerous plants that produce an abundance of seeds, many birds were seen feeding on these seed heads. I am told that this practice continues throughout the winter months as the hungry birds are nourished on a variety of tall plant specimens growing in this area. We were delighted to have a family with children join us on our walk—their interest and enthusiasm for Catherine's stories of what we were seeing gives testimony to her knowledge of all facets of nature and her understanding of children.

The Knitting Gathering at the Lee Library at 9:00 am on Wednesday continues to provide knitting expertise under the guidance of Donna Kay. We are working on a group project to be gifted soon to a good friend who has left our circle and is sorely missed. The Library continues with generous support to house our meetings at this hour although it is outside their hours of operation. Please join us if you would like to learn to knit or if you are an accomplished knitter. Check the library website activities calendar or call the library for meeting dates.

\*\*\*\*\*

## THE TOWN OF LEE



## LEE HISTORICAL SOCIETY MUSEUM



OPEN EVERY 3<sup>RD</sup> SATURDAY, NEXT DATE **OCT 18<sup>TH</sup>**  
10:00 AM – 2:00 PM

\*\*\*\*\*

**ON SALE NOW AT TOWN HALL!**

The Early Mills and Industry of Lee, NH



The Fibreboard Mill at Wadleigh Falls

By: Richard Wellington

Compiled and researched by Randy Stevens and Susan Wellington

**THEY ARE GOING LIKE HOT CAKES!**

Proceeds to benefit the Heritage Commission

\*\*\*\*\*

## HISTORY OF EDUCATION IN THE TOWN OF LEE

Phyllis White needs information & pictures:

Call Phyllis at 659-2883 or email [PhylliseWhite@comcast.net](mailto:PhylliseWhite@comcast.net)

1. NORTH LEE - Lane's School House #1 or the Turnpike School, Caverno School House #2 or Mastway, North Lee School
2. Those who attended MAST WAY SCHOOL from 1960-1967
3. Pictures to scan and return: all school buildings, class pictures (including Town Hall years) and teachers



## LEE PUBLIC LIBRARY

You like us at the library, now like us on Facebook!



### LIBRARY REGULAR HOURS

Monday, Tuesday, Wednesday: 12:00 – 8:00 pm

Thursday, Friday: 10:00 am – 5:00 pm

Saturday: 10:00 am – 3:00 pm



This is a busy time of year for many families. If you don't have time to read a book, consider reading one of our 51 different magazines or listening to our abundant collection of audio books! Come in and check them out!

### “Creating Connections: Building Community through the Arts”

The following is the first in a series of workshops on a variety of art techniques.



### DIGITAL PHOTOGRAPHY BASICS

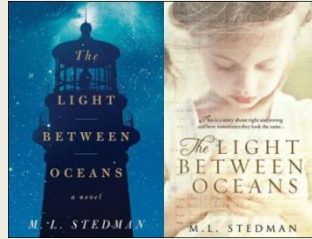
Saturday, October 18<sup>th</sup> 10:00 am - noon

Lee resident and photographer, Jean Nelson, will be teaching us how to use our cameras, whether they are phones, tablets, point and shoots or more sophisticated models, to take great pictures. On Saturday, Jean will review photographs taken by participants and then take everyone on a picture-taking safari outside the library. Space is limited to 10 and registration is required. Call the library at 659-2626.

# It's story TIME

Friday, October 17th 10:30 am

These fun 30 - 40 minute programs include stories, songs, finger plays, flannel board and a craft. Registration is not required.

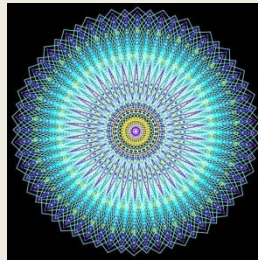


## BOOK DISCUSSION GROUP

Monday, October 20<sup>TH</sup> 7:00 pm

The Light Between Oceans by M. L. Stedman

“Haunting...Stedman draws the reader into her emotionally complex story right from the beginning, with lush descriptions of this savage and beautiful landscape, and vivid characters with whom we can readily empathize. Hers is a stunning and memorable debut.” *Booklist*, review



## MARVELOUS MANDALAS

Saturday, October 25<sup>TH</sup> 10:30 am

A mandala is a complex abstract design, usually circular in form. In this program led by artist Caroline West, learn how mandalas have been used throughout history and then learn how to draw a mandala that reflects your own special creative spirit. For grades 5-8. **Please register.**

## ON GOING PROGRAMS



## STORY TREKKERS

Tuesdays 3:30 - 4:30 pm

Ages 6-10

Read a variety of authors and award-winning books. Snack, games and a craft included. Most way students ride bus 23. **Please register.**



## KNITTING GET TOGETHER

Tuesdays, 6:30 - 8:00 pm

Come and join other knitters for an evening of knitting and socializing. Bring that project you've been meaning to finish and make some new friends.

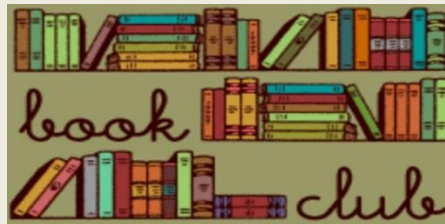


## KNITTING FOR 50+

ALTERNATE WEDNESDAYS, NEXT OCT 29<sup>th</sup> 9AM

A drop-in group will meet at the library. Help is available from instructor, Donna Kay. All levels welcome.

Offered by the Senior Advisory Committee in conjunction with the Lee Library.



## ROCKIN' READERS BOOK CLUB

Thursdays 3:00 - 4:00 pm

5<sup>th</sup> & 6<sup>th</sup> Graders

Book discussion - read and discuss a different book each month. Take bus 21. **Please register.**

## DONATION ANNOUNCEMENT

Beginning on November 1, 2014, the library will no longer accept book donations for the book sale until the spring of 2015. Our book sale shelves are bursting at the seams, so please feel free to come by anytime there isn't a program going on downstairs and fill a bag.



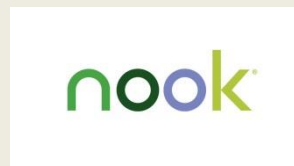
### MARIPOSA MUSEUM AND WORLD CULTURE CENTER Peterborough, NH

Thanks to the generosity of the Friends of the Lee Public Library, we now have a membership to the Mariposa Museum and World Culture Center. The pass admits 2 adults and 2 children for free. The museum is currently running an exhibit called “World of Chocolate” until January 15, 2015. Check out their website [www.mariposamuseum.org](http://www.mariposamuseum.org).



### CURRIER MUSEUM OF ART Manchester, NH

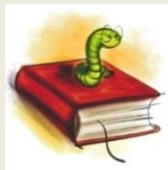
Our pass to the Currier courtesy of the Friends of the Lee Public Library, admits up to 2 adults for free. Children under 18 are also free. Beginning September 20, 2014 - January 5, 2015, the museum is presenting an exhibit by M.C. Escher called “Reality and Illusion”. There will be a \$5 special exhibition charge to view the exhibit. Upcoming exhibits include, Still Life: 1970’s Photorealism, Audubon’s Wild Animals of North America, Witness to History: James Nachtwey Photography, and Killer Heels: The Art of the High Heeled Shoe. Check out their website for all their programs: [www.currier.org](http://www.currier.org).



**Did you know** the library has a Kindle and a Nook available for checkout? Great opportunity to explore whether or not you like reading on an electronic device!

## BOOKWORM DIGEST

Sign up for the Bookworm Digest: A monthly newsletter all about everything going on at Lee Public Library. Send an email to [leelibrary@comcast.net](mailto:leelibrary@comcast.net) to get the Bookworm Digest sent once a month.



Please visit the following link to view all the library's programs: [leenh.org/pages/LeeNH\\_LibraryCal/?formid=158](http://leenh.org/pages/LeeNH_LibraryCal/?formid=158)



## FRIENDS OF THE LEE LIBRARY

The Friends of Lee Library is a non-profit organization that supports Lee Library activities through memberships and fundraising. Activities include museum passes, children's vacation and summer programs, and adult educational programs. Thanks to your funding, the Friends of Lee Library will continue to support the wonderful activities! Not a member yet? It's easy - [CLICK HERE](#) !

## LAMPREY HEALTH CARE SENIOR TRANSPORTATION PROGRAM

Lamprey Health Care's Senior Transportation program provides rides to essential services for individuals over the age of 60 and/or with disabilities. Our handicap-accessible buses take seniors and adults with disabilities to the grocery store, pharmacy, doctor, or bank! For reservations or more information call 1-800-582-7214 or 659-2424 Monday through Friday, 8:00am - 4:00pm or go to [lampreyhealth.org/index.php/patient-services/transportation\\_program](http://lampreyhealth.org/index.php/patient-services/transportation_program)



## JOIN THE LEE FIRE RESCUE DEPT.

**The Department is always looking for new members!**

Please stop by the Safety Complex Monday - Friday 8:00 am to 4:00 pm or during one of our training meetings, held on the 2nd and 4th Thursday of each month at 7:00 pm.



### EMERGENCY NOTIFICATION SYSTEM

The Town of Lee Police, Fire & Emergency Management will now utilize the emergency notification system known as CODE RED. [CLICK HERE](#) for instructions. Please visit [leenh.org](http://leenh.org) to sign up!



### CHANNEL 13

Check your local TV channel 13 to view Selectmen’s meetings aired daily at 7:00 am; 2:00 pm; 7:00 pm. [CLICK HERE](#) for more details on Channel 13. [CLICK HERE](#) to view town meetings and videos online through the media site at [leenh.org](http://leenh.org).

Sun	Mon	Tue	Wed	Thu	Fri	Sat
				1	2	3
4	5	6	7	8	9	10
11	12	13	14	15	16	17
18	19	20	21	22	23	24
25	26	27	28	29	30	

### MEETING CALENDAR

To view the meeting calendar on [leenh.org](http://leenh.org) [CLICK HERE](#)



### DISPOSAL OF PRESCRIPTION DRUGS

A drop-off box is available at the Public Safety Complex for unused and unwanted prescriptions.

### STRAFFORD COUNTY CITIZEN CORPS HEALTH & SAFETY COUNCIL OF STRAFFORD COUNTY

Click below for good information about Influenza. Click on the “Senior” web page link for more information.

[dhhs.nh.gov/dphs/cdcs/influenza/index.htm](http://dhhs.nh.gov/dphs/cdcs/influenza/index.htm)





**WILKINSON FOOD PANTRY**  
**Lee Church Congregational 17 Mast Rd**

The food pantry is open to any family in the Town of Lee. The pantry is open the first and third Monday of each month from 6 - 7:00 pm. If there is an emergency please call the Church office at 659-2861. All visits to the pantry are strictly confidential.



**Community Action Partnership**  
**Pregnant? New Baby? CAP Can Help!**

If you are pregnant, know someone who is, or just had a baby, Community Action can help. We have a free Home Visiting program for teens and women age 25 and under. Call CAP's Home Visiting at 603-516-8108 to learn more or visit [www.straffordcap.org](http://www.straffordcap.org).

\*\*\*\*\*

**BITS of HISTORY from**  
**The NEWMARKET ADVERTISER**

**October 26, 1895**

Charles McMahan of the Crayon Portrait Company is in town delivering ordered portraits enlarged from photographs. Their work is superior to any this writer has ever seen.

H.M. Glidden's little corn patch has yielded 125 bushels of the finest ears of corn to be found hereabouts. A good part of it is a foot long and covered to the tip with kernels.

\*\*\*\*\*

To receive the E-CRIER via email EVERY WEEK go to [www.leenh.org](http://www.leenh.org), click on Subscribe to E-Alerts and follow the directions to subscribe. It's that easy!

\*\*\*\*\*