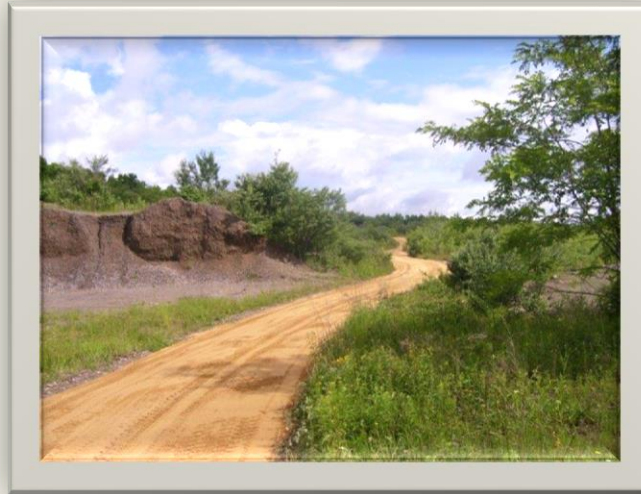


TOWN OF LEE, NEW HAMPSHIRE

7 Mast Road
Lee, New Hampshire 03861
(603) 659-5414

October 4, 2013

NOBLE FARM



The Lee Board of Selectmen is pleased to announce that it has entered into a Purchase & Sales Agreement with James P. Daley, Jr. for the 91 acre parcel of land off North River Road known as Noble Farm. The Town acquired this property by tax deed in 2003 and it was re-zoned from residential to light-commercial use in 2012. The sale includes the area contained within the Conservation Easement. The Board has been advised by Mr. Daley that he intends to construct one or more warehouses on the property. The purchase price is \$200,000.



LEE SENIORS GROUP

Are you or a senior you know interested in talking about what seniors need in the community? If so we are looking for your input as we develop a program to reach out to the seniors of Lee. Email us at lee.Seniors.Group@gmail.com so we can consider your needs for a successful program. We look forward to hearing from you!

THE SENIOR ADVISORY COMMITTEE is offering a FLU VACCINE CLINIC

FREE to those 65 AND OLDER

October 10, 2013 10:00am - 1:00pm

Location: Public Safety Complex

**ALL AGES WELCOME - ALL INSURANCES ACCEPTED
PLEASE BRING INSURANCE CARD**



LAMPREY RIVER WATERSHED ASSOCIATION'S ANNUAL MEETING

October 18th 6 - 9:00 pm

Location: Grange Hall in Lee

The public is invited to come join the celebration of LRWA's 30 years as a non-profit working for a clean and healthy watershed - something that Lee residents benefit from greatly. There will be a spaghetti supper, comments by Martha Fuller Clark (invited), and a silent auction of original works by eight members of the Great Bay Art Association that were inspired by the river. There were many Lee residents that were a part of getting the organization started in the early 80s and there have been many successes along the way. Call 659-9363 to reserve a seat or email dawn.genes@lrwa-nh.org.

[CLICK HERE](#) more information

[CLICK HERE](#) for registration form

THE SEACOAST VETERANS CONFERENCE

Saturday, October 19, 2014

Registration begins at 8:00 am

Location: Service Credit Union Corporate Headquarters at 3003

Lafayette Road in Portsmouth, NH

All Veterans, Service Members, their Families, and Significant Others are invited to join us for the 4th Annual Seacoast Veterans Conference. This year's theme is "Seeking Your Normal in the Face of War"—"Keys to a Peaceful Return". The Conference features leading experts in the fields of post-military adjustments for particular issues facing Veterans, Service Members, their Families and Significant Others. There will be gender specific breakouts, employment training opportunities, Veteran enrollments & entitlements and much more. The Mobile Vet Center will also be available for self-help or for touring. There will be an array of resource providers with materials and information.

This conference is free to attend, but registration is required.

Continental breakfast and lunch are donated by Service Credit Union.

More information and registration at

www.seacoastveteransconference.org On Facebook:

www.facebook.com/SeacoastVeteransConference

Email inquiries and registration also at

seacoastveteransconference@Gmail.com

You can also register by calling 422-8208 x336 - leave a message with your name and the number of people you are registering. You may leave a phone number or email address if you want more information.

[CLICK HERE](#) for Seacoast Veterans Flier



Happy Halloween

**TOWN OF LEE
TRICK OR TREAT
OCTOBER 30TH
5:00 PM - 7:00 PM**



LEE PUBLIC LIBRARY

You like us at the library, now like us on Facebook!



LIBRARY HOURS

Monday, Tuesday, Wednesday: 12:00 – 8:00 pm

Thursday, Friday: 10:00 am – 5:00 pm

Saturday: 10:00 am – 3:00 pm

STORY TIME

Thursdays & Fridays 10:30 am

Stories, songs, finger plays, flannel board & a craft. Registration is not required. All ages welcome.

KNITTING GET TOGETHER

Tuesdays, 6:30 - 8:00 pm

Come and join other knitters for an evening of knitting and socializing. Make some new friends, while finishing up a project. For experienced knitters, no instructors available!



BOOK SALE

Saturday, October 5 10 a.m. – 2 p.m. (NEW START TIME)

Want to add some books to your collection at bargain basement prices? At the library's book sale you'll find current fiction, mysteries, trade paperbacks, history books, biographies, memoirs, cookbooks, gardening and nature books, children's literature, poetry and self-help books all for the low price of 6/\$1.00 or \$0.20 each.

STAINED GLASS PUMPKIN – DROP IN CRAFT

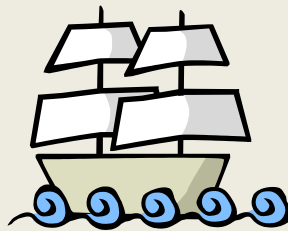
Saturday, October 12 & October 26

Stop by the library and make a “stained glass” pumpkin to hang in the window!



COLUMBUS DAY – LIBRARY IS CLOSED

Monday, October 14, 2013



SENIOR ART NIGHT

Tuesdays, October 15, 22, 29 & November 5 at 6:30pm

Instructor, Caroline West, will help participants create painted floor cloths on linoleum. This project will take 3-4 weeks to complete then we will begin a new project. Supplies will be provided. If you are interested in signing up, please come by the library to choose a design from one of 2 floor cloth books or you can use your own design. The Lee Senior Advisory Committee hopes to see more classes of this type. Space is limited. Call 659-2626 to register.

LIFE LONG LEARNERS WANTED!

September can be back to school whatever your age might be! Take classes through the Lee Public Library's Learning Express. (Look for Learning Express on our website) Whatever your goal, Learning Express resources will help you succeed. Each of the Learning Centers offers practice tests, exercises, skill-building courses, and information you need to achieve the results you want—at school, at work, or in life. Best of all you can take all courses from your home computer! Courses available to you:

[Adobe Dreamweaver Courses](#)

[Adobe Flash Courses](#)

[Adobe Illustrator Courses](#)

[Adobe Photoshop Courses](#)

[Corel WordPerfect Courses](#)

[Microsoft Access Courses](#)

[Microsoft Excel Courses](#)

[Microsoft Outlook Courses](#)

[Microsoft PowerPoint Courses](#)

[Microsoft Project Courses](#)

[Microsoft Publisher Courses](#)

[Microsoft SharePoint Designer Courses](#)

[Microsoft Visio Courses](#)

[Microsoft Word Courses](#)

[Windows and Mac Operating Systems Courses](#)

[Getting Started with Computers](#)

[Introduction to the Computer](#)

[Introduction to Windows](#)

[The Computer in Action](#)

[Getting Started with the Internet](#)

[Introduction to the Internet](#)

[Email and Chat](#)

[Social Networks and Online Communities](#)

[Web Applications and Internet Security](#)

DOG DAYS AT THE LIBRARY (K-4th students)

October 21, 2013 3:15 – 4:15 pm - 3rd Monday every month

Come read to a French Bulldog named Izzy. Registration is required.

Call 659-2626 to sign up.



LEE LIBRARY ONLINE CATALOG NEWS

OverDrive, which powers the NH Downloadable Books service, may now be searched from our [card catalog](#).

Directions for using this service are as follows: Enter the title, author or other search term in the search box at the upper-left corner. Then look for the OverDrive tab to limit your search to the NH Downloadable collection. Click on the "Click here to go to..." message to get to the NH Downloadable site and "Sign In" as usual.

MUSEUMS

Remember the discount coupons for museums available at the library! We have the Museum of Fine Arts, Children's Museum of NH, Boston Science Museum, Currier Museum, Seacoast Science Museum, and Strawberry Banke just to name a few!

FRIENDS OF THE LEE LIBRARY

The Friends of Lee Library is a non-profit organization that supports Lee Library activities through memberships and fundraising. Activities include museum passes, children's vacation and summer programs, and adult educational programs. Thanks to your funding, the Friends of Lee Library will continue to support the wonderful activities! Not a member yet? It's easy - [CLICK HERE](#) !

LEE HISTORICAL SOCIETY

DID YOU ATTEND A SCHOOL IN LEE?

Phyllis White is resuming her research on the history of education in Lee. If you attended a One Room Schoolhouse, the Town Hall, or Mast Way Schools, or if you are a former teacher or the owner of one of the town's Day Care/Nursery Schools, Phyllis would like to hear from you. She can be reached at 659-2883.

MUSEUM HOURS

The Lee Historical Society Museum will be open from 10:00am - 2:00pm on the third Saturday of each month from April to November. There is still time to visit us this year!

THE LEE HERITAGE COMMISSION PRESENTS THE "LEE HERITAGE SITES" PROJECT

Highlights Eight Historic Sites throughout Lee, promotes awareness of our past heritage, focuses our civic pride in the present, and encourages preservation of historic structures in the future.

[CLICK HERE](#) for PowerPoint Presentation

LAMPREY HEALTH CARE SENIOR TRANSPORTATION PROGRAM

Lamprey Health Care's Senior Transportation program provides rides to essential services for individuals over the age of 60 and/or with disabilities. Our handicap-accessible buses take seniors and adults with disabilities to the grocery store, pharmacy, doctor, or bank! The service is door-to-door. For reservations call 1-800-582-7214 or 659-2424 Monday-Friday, 8:00 am - 4:00 pm. Lee residents are welcome to join us for our weekly shopping run to the Fox Run Mall, Wal-Mart and many other stops. The bus currently picks up at Lee Town Hall at 8:50 a.m. on Thursdays.

JOIN THE LEE FIRE RESCUE DEPT

The Department is always looking for new members!

Please stop by the Safety Complex Monday - Friday 8:00 am to 4:00 pm or during one of our training meetings, held on the 2nd and 4th Thursday of each month at 7:00 pm.



EMERGENCY NOTIFICATION SYSTEM

The Town of Lee Police, Fire and Emergency Management will now utilize the emergency notification system known as CODE RED. [CLICK HERE](#) for sign up instructions. Please visit leenh.org to sign up!

CHANNEL 13

Check your local TV channel 13 to view Selectmen's meetings aired daily at 7:00 am; 2:00 pm; 7:00 pm. [CLICK HERE](#) to view meetings and videos online through the media site at leenh.org.

MEETING CALENDAR

To view the meeting calendar on leenh.org [CLICK HERE](#)



**BITS of HISTORY from
the NEWMARKET ADVERTISER
October 7, 1893**

*One of our neighbors has a hen who laid 18 eggs on a bare floor, sat heavily on them in private for three weeks and come out the proud mother a two chickens.

*Wadleigh's river is yielding a large quantity of eels, but only to him who controlleth the eelpot. Some of them are of immense size. Those who have never partaken of an eel stew should try one.



Excerpts submitted by Road Agent Randy Stevens, who has been researching Lee's history in his spare time. Thanks Randy!

WILKINSON FOOD PANTRY

Location: Lee Church Congregational 17 Mast Rd

The food pantry is open to any family in the Town of Lee. The pantry is open the first and third Monday of each month from 6:00 - 7:00 pm. If there is an emergency need please feel free to contact the Church office 659-2861. All visits to the pantry are strictly confidential.

**STRAFFORD COUNTY CITIZEN CORPS
HEALTH & SAFETY COUNCIL
OF STRAFFORD COUNTY**

The below web page link to the NHHS has some good information about Influenza - click on the "Senior" web page link for more information.

<http://www.dhhs.nh.gov/dphs/cdcs/influenza/index.htm>



DISPOSAL OF PRESCRIPTION DRUGS

A drop-off box for unused and unwanted prescription drugs provides Lee residents a safe way to dispose of medications. Unwanted and unused prescription drugs may be dropped off anytime at the Safety Complex at 20 George Bennett Rd.



Food Pantry Donations Needed

You Can Help!

Our food pantry supply in Dover, Farmington and Milton are low and demand is high.

We need donations of non-perishable foods and grocery store gift cards to help fill our shelves. Drop off items at our Dover location in McConnell Center or at 527 Main Street in Farmington (M, W, F)

Or donate online at www.straffordcap.org/donate



Community Action Partnership Pregnant? New Baby? CAP Can Help!

If you are pregnant, know someone who is, or just had a baby, Community Action can help. We have a free Home Visiting program for teens and women age 25 and under. Call CAP's Home Visiting at 603-516-8108 to talk to one of our staff and learn more. For more information, visit www.straffordcap.org.