

# TOWN OF LEE, NEW HAMPSHIRE

7 Mast Road  
Lee, New Hampshire 03861  
(603) 659-5414

June 21, 2019

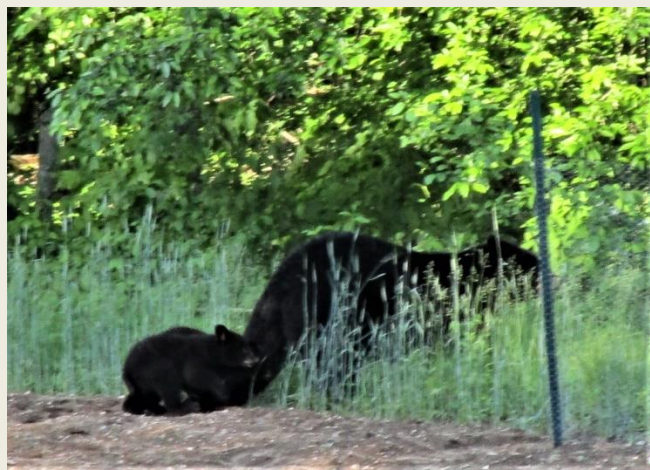
Lee News & Upcoming  
Events



**HAPPY FIRST DAY OF SUMMER – ENJOY !**

---

## A MOM AND HER CUBS ALONG NORTH RIVER ROAD



Photos by Dick Babcock

---

## CLASSIC CAR / ANTIQUE AUTO CLUB

Anyone interested in joining please contact Selectman Brown at  
[cbrown@leenh.org](mailto:cbrown@leenh.org)



## 2<sup>nd</sup> ANNUAL MUSIC IN THE PARK SUMMER CONCERT SERIES

Hosted by the Lee Recreation Commission

Hamburgers, hot dogs, chips and drinks will be available for a \$5 donation from 6:30-7:30pm on a first come, first serve basis.



### CONCERT SCHEDULE

June 27<sup>th</sup> - Dave Gerard  
July 4<sup>th</sup> - NO SHOW  
July 11<sup>th</sup> - Jimmy D  
July 18<sup>th</sup> - Mike Morris  
July 25<sup>th</sup> - Reunion Hill Band

August 1<sup>st</sup> - Jumbo Circus Peanuts  
August 8<sup>th</sup> - Mike Morris  
August 15<sup>th</sup> - April Cushman  
August 22<sup>nd</sup> - Paul Smith  
August 29<sup>th</sup> - Kevin Burt

### THANK YOU TO OUR SPONSORS

Accutech Marine Propeller  
Ear Craft Music  
Firebird Farm Antiques  
Granite State Credit Union  
John's Auto Repair  
Lee Postal Center  
Marquis Family  
Maximum Velocity  
S&J Transportation  
Take Five Dog Care  
Wentworth Health Partners



mrfoxcomposting.com

## SIGN UP FOR THE FOOD WASTE COMPOSTING PILOT PROGRAM NOW! STARTING JUNE 29<sup>TH</sup>

The Select Board and Solid Waste Committee are seeking up to 200 interested residents to participate in food waste pilot program. The Town will provide special compostable bags to bring the food waste to the Transfer Station. Mr. Fox, a company specializing in food waste composting, will then transport the food waste to their facility in Eliot, Maine where it will be composted into a soil like material. Acceptable items are all food scraps and bones, eggshells, bread, seafood, wooden stirrers, sugar packets, wax muffin wrappers, tea bags, coffee grounds/filters, waxed paper liners, fruits and vegetables. Do NOT miss your chance to participate in this important program to keep food waste out of the landfill and make a useful product out of it.

**Interested residents should e-mail the Public Works Manager Steve Bullek at [sbullek@leenh.org](mailto:sbullek@leenh.org) or sign up at the Transfer Station, Farmers Market or call 603-659-6515. [CLICK HERE](#) for Flyer!**

---



### CELEBRATE NATIONAL POLLINATOR WEEK JUNE 17<sup>TH</sup> – 23<sup>RD</sup>!

Stafford County Master Gardeners planted a native butterfly garden in May and just recently added an insect hotel at the Native Garden of NH Plants at the Lee Recycling Center. If you would like more background on the Native Garden or a list of plants we included, both can be found on our website: <http://scmga.wordpress.com/nativegarden>.

Stop by and talk gardening with us if we're working. You'll see the *Ask a MG* sign out, and we'd love to help you with your gardening questions.

Extension also offers a wonderful program, *Ask UNH Extension*, which is manned by Master Gardeners from all ten counties in New Hampshire. The Infoline is 1-877-398-4769, their email is [answers@unh.edu](mailto:answers@unh.edu), and their walk-in address is 329 Mast Road, Set 115, Goffstown.

How can you and your family help preserve and protect our pollinators? There are different ways including reducing or eliminating your pesticide use and creating areas that are pollinator friendly. You can seek more information from [extension.unh.edu](http://extension.unh.edu) where you can search for pollinator plants and habitats. You can also find more pollinator information at [pollinator.org](http://pollinator.org).

Judy @ NHSCMGA

*New Hampshire Stafford County Master Gardeners Association*



## JULY SELECT BOARD MEETINGS

Monday, **July 1<sup>st</sup>, 15<sup>th</sup> and 29<sup>th</sup>** Starting at 6:30 pm

Meetings can now be seen on **You Tube** at [www.media.leenh.org](http://www.media.leenh.org)

---



**JULY 20<sup>TH</sup> – LITTLE RIVER PARK PAVILION  
HOSTED BY THE LEE RECREATION  
COMMISSION**

Begin assembling model rockets at 9:00 a.m. with first launch happening around 10:30!  
Kids of all ages are welcome. Event is open and FREE to Lee residents only.

---



**PHOTO BY DAVID MCCORMICK**

### **TADPOLE STROLL**

Sponsored by the  
Lee Conservation Commission  
**Town Forest, Sat, June 22<sup>nd</sup> 10:00 am**  
(Rain date: Sunday, June 23<sup>rd</sup> 10:00 am)

In early April, wood frogs and spotted salamanders began their breeding season and made their way to vernal pools. There, egg masses they deposited in late April and early May have hatched, and a variety of amphibian species are growing through the larval stage of their life cycles. Abundant and varied forms of invertebrate larvae share these ephemeral wetlands. As is the case in any habitat on the planet, life in the vernal pool is not a peaceable kingdom. Amphibian larvae are a food source for a variety of predators, particularly the larvae of some of the larger insects such as predacious diving beetles, dobson flies and dragonflies; predation by fellow amphibian larvae is an additional hazard. Time, too, can be a winnower of these larval amphibians. During a dry spring, vernal pools can shrink rapidly as warm temperatures and windy days speed the rate of evaporation, and tadpoles must metamorphose before the pools are completely dry. This year's slowly warming spring and abundant rain has produced a year in which water evaporation is not an issue, and the pools are teeming with critters!

Anyone interested in learning more about the aquatic stage of wood frog and spotted salamander life cycles and some of the other animals who use vernal pools, is invited to the Tadpole Stroll. Using clear plastic dippers, we'll capture both wood frog and spotted salamander larvae, and see what sort of interesting larval invertebrates we can find. Sponsored by the Lee Conservation Commission and led by Catherine Fisher, this walk will likely last an hour. All ages are welcome. Wear waterproof shoes (or sneakers, if you don't mind wet toes). Mosquitoes may also be present, so come prepared! We'll meet in front of the library.



## One Bin at a Time – Yard Waste

### Talking trash with Jen Messeder, LSC member

In partnership with the Lee Solid Waste Committee

If you've been in town for a while, you probably already know the answer to "what do I do with my yard waste?" But if you're new and are used to including bags of leaves and grass clippings with your curb-side pick-up, you might be wondering...

Yard waste doesn't go in the solid waste bin. As to where it does go, you might have some options depending on whether you have some woods on your property that can discreetly house a brush and debris pile (or two).

#### **Grass clippings and dry leaves:**

- Grass clippings and leaves can be composted, either at home or in the Transfer Station's yard waste area (where staff turns it into compost, free for the taking).
- A better and easier option is to get a mulching mower or a mulching blade for the mower you have. This chops the clippings and leaves into small pieces that shuffle down through the grass to the topsoil. There, it will compost in place, returning nutrients to your lawn and reducing the need to fertilize. Win-win!

#### **Brush – If you have some woods on your property:**

- Pick a spot or two for piles where they won't be an annoying sight for your neighbors.
- Make a pile for woody brush and a pile for less robust yard waste, like dead leaves and garden debris. Both piles will settle and break down over time.

#### **Brush – If you don't have woods:**

- Bring your woody brush to the Transfer Station's brush pile, which is just beyond the yard waste area, down the slope to the right. Note that it costs us to have this brush chipped and hauled to be burned for energy.
- If you have a chipper at home, you can use your chipped wood as mulch on your property, or you can dump it in the Transfer Station's mulch pile, which is next to the compost pile.

Where the magic happens, on the right side of the Transfer Station building.



Yard waste




Compost and mulch – free!



Brush – down the slope

---

**Refuse • Reduce • Reuse • Repair • Repurpose • Recycle • Rot**

 • Lee NH Sustainability Committee • Low Carbon Diet - Seacoast NH • "Zero Waste" groups

---



**CONSERVATION MONITORING IN LEE!  
COME SEE CONSERVED LANDS  
EVERY WEDNESDAY MORNING**

From now until early fall join the Conservation Commission on Wednesday mornings while they conduct site walks on the Town's conserved properties. Some of these lands are owned by the Town, but most of them are privately owned and protected in perpetuity with a conservation easement. If you'd like to participate, call the Town Secretary, Denise Duval, at 659-5414. Meet in the Town Hall parking lot at 8:45 a.m., dressed for walking in the woods. Standard precautions for ticks & mosquitoes are advised. Walks take 1½-2 hrs.

---



**LEE TRIVIA QUESTION:**

**No prizes – just the satisfaction of confirming how much you know about your town!**

**This Week's New Trivia Question:**

*In 1790, the United States started having a census taken every 10 years. In the 2010 census, the population counted in Lee, NH was 4,330. In what year did Lee, NH have its lowest population count?  
(The answer will be given in next week's Lee E-Crier.)*

**Answer to Last Week's Lee Trivia Question:**

*Captain Noah Wiswall, Lieutenant Gershom Flagg, and Ensign Edward Walker are all linked to one event that took place in colonial Lee, in that all three were killed in a battle that took place around Wheelwright Pond on July 6, 1690, early in King Williams' War. There were casualties on both sides of the opposing forces – an unknown number of Abenaki losses and 15 English Colonists lost their lives – and no clear winner of the battle.*

---

**LEE TOWN COMMITTEE AND COMMISSION VACANCIES**

The Planning Board, Solid Waste Advisory, Energy, and Sustainability Committees have immediate openings to be filled. If you are interested contact the Town Secretary Denise Duval at 603-659-5414 or email [dduval@leenh.org](mailto:dduval@leenh.org). [CLICK HERE](#) for Application.

---

**COMMITTEE, COMMISSION & BOARD MEETING CALENDAR**

Go to [www.leenh.org/Pages/LeeNH\\_MeetingsCal/?formid=158](http://www.leenh.org/Pages/LeeNH_MeetingsCal/?formid=158)

**LIBRARY CALENDAR**

Go to [http://leenh.org/pages/LeeNH\\_LibraryCal/?formid=158](http://leenh.org/pages/LeeNH_LibraryCal/?formid=158)



**LEE FIRE RESCUE DEPARTMENT SEEKING CALL  
FIREFIGHTERS AND EMTS**  
[CLICK HERE](#) for more information

**[BACKYARD BURNING QUICK GUIDE](#)  
[CATEGORY I & II FIRE SPECIFICATIONS](#)**

**[CLICK HERE](#) for the Summer Safety Educator**

**FIRE DEPARTMENT FEE SCHEDULE**  
Please [CLICK HERE](#) for the Fee Schedule  
Please [CLICK HERE](#) for the Permitting Checklist and Reference Guide



Scott M. Nemet  
Fire Chief

## LEE FIRE & RESCUE DEPARTMENT

20 George Bennett Road  
Lee, New Hampshire 03861  
(P): 603.659.5411 (F): 603.659.9611



Jeffery S. Liporto  
Deputy Chief

### TIMELY TOPICS

- The Fire Department recommends that you change the batteries in all smoke detectors and carbon monoxide detectors. There should be at least one smoke and carbon monoxide detector on each level of your residence. If you would like suggestions on where to place smoke detectors you may call us here at the fire station and we would be glad to come to your home to help.
- Check your fire extinguishers to make sure they are fully charged and ready for use.
- Clean out your dryer vents to prevent dryer fires.
- Keep your outdoor grill clean and maintain the burners and gas lines to prevent grill fires. Keep your grill away from your house and out from under overhangs and decks when in use to prevent grill fires from spreading to your home. Keep a fire extinguisher nearby in the case of grill fires.
- If you have severe allergies especially to bees, wasps and hornets make sure your epi pen is up to date and available for immediate use in time of need. As the weather becomes warmer bees, wasps and hornets will become more active.

**BURN PERMIT**

[CLICK HERE](#) for NH BURN PERMIT RULES AND REGULATIONS



## WHEN SECONDS COUNT...

Can the Police, Fire, or Ambulance find your home when you need them for assistance with an emergency? Can they find it at night? Can they find it during a snowstorm?

Having your name and number on a mailbox is just not enough. Some mailboxes are clustered together. The numbers are small and the location may not mark the entrance to your driveway.

The Lee Firemen's Association, in a joint effort with the Lee Fire Department, has started a program to install reflective house number signs at driveway entrances to assist all emergency responders in locating your home in a time of need. The cost for each sign with a post is \$30.00 and it will be installed by the Lee Firemen's Association.

**Please take the time NOW to SAVE TIME in an EMERGENCY**  
**[CLICK HERE](#) for Reflective House Number Sign Request form**



## POLICE NOTICE

In a follow up to the request that residents properly number their homes, [CLICK HERE](#) for the Ordinance that applies. The Lee Police will be compiling a list of homes that are not complying with this ordinance and make contact with the homeowners in hopes of getting everyone in compliance which will make it easier to locate a residence in times of an emergency.

## SCAM! SCAM! SCAM!

**Please do not become a victim. WHEN IN DOUBT, DON'T GIVE IT OUT.**

An old scam has resurfaced. Residents are being contacted by "Publisher's Clearing House" about having won the jackpot. The stipulation is that the resident must pay \$7,500 in advance. This is a scam. You will never have to pre-pay the "FDIC" for your winnings.

**Eversource Energy and NH Public Utilities Commission News Release**  
**[CLICK HERE](#) To Read About How to Avoid Becoming a Victim in 2019**



**READY RIDES** offer free rides to medical appointments for residents 55+ and those who are disabled and unable to drive. They serve Lee, Barrington, Durham, Madbury, Newmarket, Northwood, Nottingham and Strafford. Please call Meri Schmalz at 224-8719 or email [info@readyrides.org](mailto:info@readyrides.org) with questions or go to <https://readyrides.org/> for details. **Volunteers from Lee are needed!**

## WILKINSON FOOD PANTRY

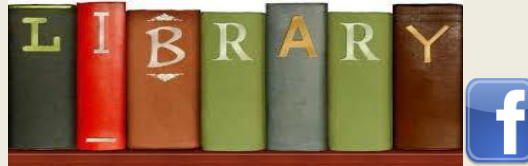
**Lee Church Congregational, 17 Mast Rd**

The food pantry is open to **any family** in the towns of Lee, Durham, Newmarket and Nottingham. The pantry is open the 1<sup>st</sup> & 3<sup>rd</sup> Monday of each month from 6 - 7:00 pm. If there is an emergency please call the Church office at 659-2861. All visits to the pantry are strictly confidential.





A drop-off is available at the Public Safety Complex to the left of the front entrance for unused and unwanted prescriptions.



Monday, Tuesday, Wednesday: 12:00 – 8:00 pm  
Thursday, Friday: 10:00 am – 5:00 pm  
Saturday: 10am – 3pm

### SUMMER READING PROGRAM (For Adults too!)

June 24<sup>th</sup> - August 8<sup>th</sup>

Write very short reviews (one or two sentences) about the books you read this summer to enter our weekly summer reading drawing! **Registration for this program begins on June 24<sup>th</sup>.** Thank you to the Friends of the Lee Public Library for encouraging all readers to read by sponsoring the Summer Reading Program.

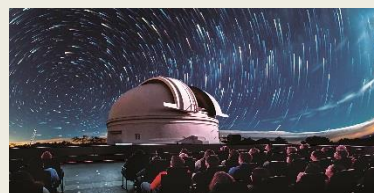


Thursday, July 11<sup>th</sup> 10:30am - Wildlife Encounters at Madbury Town Hall



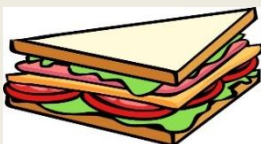
Saturday, July 13 - Trains 9:00 and 11:00

Stop by the library and play with trains. Lots of tracks and trains means lots of fun!



Thursday, July 18<sup>th</sup> 10:30 am - 3:00 pm (3 sessions) Traveling Planetarium

Go to [www.durhampubliclibrary.org](http://www.durhampubliclibrary.org) and scroll down to see the 3 sign-up links. Each session is capped at 25 participants. Co-sponsored by the Lee, Madbury and Durham public libraries.



### **Thursdays, Sandwich and a Story at the Park 11:30 - 12:30pm**

Bring a bag lunch and join us on at Little River Park on Thursdays July 25<sup>th</sup>, August 1<sup>st</sup>, 15<sup>th</sup> & 22<sup>nd</sup> and enjoy a story or two, some movement activities, lunch and some time with friends.



### **Tiny Tots Lapsit - Tuesdays in July & August 3:00 pm**

For children up to 2 years of age, this 20 minute program offers songs, stories and movement with relaxed time afterwards for play and socializing. **Registration is not required.**

### **DISCOUNTED MUSEUM PASSES**

The library has many discounted museum passes provided by the Friends of the library including: Woodman Museum, Boston Children's Museum, Museum of Science, Children's Museum of NH, Currier Museum of Art, Isabella Stewart Gardner Museum, Museum of Fine Arts, Seacoast Science Center, Strawberry Banke, Peabody Essex Museum and the New England Aquarium. **Stop by the library or call 659-2626 to reserve a pass.** \*\*\*The Aquarium pass is now available year round\*\*\*



### **ORION STARBLAST TELESCOPE**

If you're an astronomy buff or you just enjoy gazing at the night sky, the library has an Orion StarBlast Telescope to lend. Using the telescope, you can expect to see planets, stars, the moon, and deep-sky objects such as nebulae, star clusters and some galaxies. If you'd like to borrow the StarBlast, call the library at 659-2626 or come in and check it out.

### **eBooks and Audio Books**

**Below is a list of eBooks and audio books new to Overdrive in 2019 purchased by the library and exclusive to Lee Library patrons.** The wait list on Overdrive will reflect the time frame for Lee Library patrons on these titles only.

The Clockmaker's Daughter – Kate Morton  
Kingdom of the Blind– Louise Penny  
Pachinko – Min Jin Lee  
A Spark of Light – Jodi Picoult  
The Tattooist of Auschwitz – Heather Morris  
A Discovery of Witches – Deborah Harkness  
Transcription – Kate Atkinson  
Where the Crawdads Sing – Delia Owens  
Becoming – Michelle Obama  
The Gown – Jennifer Robson  
Madame Fourcade's Secret War – Lynne Olson  
Normal People – Sally Rooney  
Past Tense – Lee Child  
The Silent Patient – Alex Michaelides  
The Mysterious Benedict Society – Trenton L. Stewart

The Hate U Give – Angie Thomas  
The Woman in the Window – A. J. Finn  
18<sup>th</sup> Abduction – James Patterson  
Ask Again, Yes – Mary Keane  
Everything I Never Told You – Celeste Ng  
I Owe You One – Sophie Kinsella  
Inheritance – Dani Shapiro  
The Kiss Quotient – Helen Hoang  
Lost Roses – Martha Kelly  
The Malta Exchange – Steve Berry  
Nine Perfect Strangers – Lianne Moriarity  
Once Upon a River – Curtis Settenfield  
The Pioneers – David McCullough



**Knitting for 50+  
1<sup>st</sup> & 3<sup>rd</sup> Wednesdays 9 am  
July 3<sup>rd</sup> & 17<sup>th</sup>**

A drop-in group meets at the library.  
All levels welcome.

## CHILDREN'S PROGRAMS



**2019 Summer Reading Program Kickoff  
"A Universe of Stories"**

**Thursday, June 27<sup>th</sup>  
Madbury Town Hall, 10:30 am**



**Fridays 10:30 - 11:30 am**

These fun 30-40 minute programs for ages 2-6 include stories, songs, finger plays, flannel board and a craft. **Registration is not required.**

July 5 - <b>Space/Rockets</b>	July 12 - <b>Animals</b>	July 19 - <b>Space/Planets</b>	July 26 - <b>Under the Sea</b>
Aug 2 - <b>Aliens</b>	Aug 9 - <b>Space</b>	Aug 16 - <b>Summer Fun</b>	

**School Age Story Time/Craft Fridays 3:00 pm**

These fun 40-60 minute programs for children ages 7-10 include stories and an activity and/or craft. **Registration is not required.**

July 5 - **Space/Sparkle Bracelets**  
July 12 - **Animal/Dog/Cat Toys**  
July 19 - **Space/Planets/Galaxy Slime**  
July 26 - **Under the Sea/Woven Baskets**  
Aug 2 - **Aliens/Feather key Chains**  
Aug 9 - **Space/Duct Tape Pencil Case**  
Aug 16 - **Summer Fun/Craft to be Determined**

**Regional & State  
News & Events**

**GOVERNOR & EXECUTIVE COUNCIL MEETING WEDNESDAY, JUNE 19, 2019**

[CLICK HERE](#) for the Minutes

Next Governor & Executive Council Meeting

**Wednesday, July 10, 2019 10:00 am in Littleton, NH**

## **NH DRA's ANNUAL LOW & MODERATE HOMEOWNERS PROPERTY TAX RELIEF PROGRAM**

The Low and Moderate Income Homeowners Property Tax Relief provisions are designed to lessen the economic burden of the State Education Property Tax on certain taxpayers. NH residents who own a homestead subject to the State Education Property Tax, resided in the homestead as of April 1<sup>st</sup> of the year for which the claim for relief is being made, and have a total household income of \$20,000 or less if a single person (or \$40,000 or less if married or head of household) may apply for property tax relief during the filing period - **after May 1, 2019, but no later than June 30, 2019.**

Find out more information by going to the Department of Revenue Administration's [website](#).

Form DP-8, Low and Moderate Income Homeowners Property Tax Relief:

<https://www.revenue.nh.gov/forms/low-moderate.htm>

---

### **If you are a Lee Resident in need of assistance with a Veteran's issue then the Lee Memorial VFW Post 10676 may be able to help.**

This post serves the communities of Lee, Durham, Madbury and Newmarket and has Service Officers who can help folks with just about any Veteran's related issue. At the State level they have a seat on the SVAC (State Veterans Advisory Committee) and are linked with tens of other non-profit Veterans organizations that provide a host of services. Please contact Andy Corrow, Commander, VFW Post 10676, at 603-397-9267 or [vfwpost10676@yahoo.com](mailto:vfwpost10676@yahoo.com) for assistance.



### **McGregor EMS Volunteers Needed**

McGregor EMS is currently seeking both Medical and Non-Medical Volunteers. Those interested may email [membership@mcgregorems.org](mailto:membership@mcgregorems.org). To learn more about this great service [CLICK HERE!](#)

---

### **Oyster River Cooperative School Board News**

The last day of school for 2018-2019 in ORCSD is June 19<sup>th</sup>!

Misty Lowe has been selected as the interim principal of Mast Way for the 2019-2020 school year. Ms. Lowe has most recently been Assistant Director of Student Services at ORHS.

Details, drawings, and presentations for the proposed new middle school are now online: [https://orcscd.org/proposed\\_new\\_middle\\_school](https://orcscd.org/proposed_new_middle_school)

The last strand of the five-year strategic plan was approved. That project is now complete.

Proposed communications goals for the 2019-2020 school year were introduced and may be adopted at the June 19<sup>th</sup> meeting. The proposal includes updating online content and adding a digital communications specialist to facilitate effective communication between the district and the community.

---



**DO YOU WANT TO SHARPEN YOUR CONSERVATION FIELD SKILLS?  
THEN SIGN UP FOR ANY ONE OF THESE CONSERVATION TRAINING SERIES PUT ON BY THE  
NHACC AND UNH EXTENSION.**

## CONSERVATION TRAINING SERIES



### **IMPROVING WILDLIFE HABITAT ON YOUR LAND**

Saturday, **March 23, 2019** • 10am – 12pm • Rindge, NH

### **EASEMENT MONITORING FOR VOLUNTEERS**

Friday, **April 26, 2019** • 9am – 2pm • Canterbury, NH

Saturday, **May 18, 2019** • 9am – 2pm • New Durham, NH

### **MANAGING TOWN FORESTS: Timber, Wildlife, Recreation**

Friday, **May 3, 2019** • 1pm – 4pm • Gilmanton, NH

Friday, **May 10, 2019** • 1pm – 4pm • North Conway, NH

Friday, **June 7, 2019** • 1pm – 4pm • Fremont, NH

### **MAP & COMPASS SKILLS**

Friday, **May 24, 2019** • 1pm – 4pm • Concord, NH

### **INVENTORYING & MONITORING GRASSLAND BIRDS**

Friday, **May 24, 2019** • 7:45am – 12pm • Amherst, NH

### **HOW TO LEAD A NATURE WALK**

Friday, **June 28, 2019** • 1:30pm – 4:30pm • Holderness, NH

For more information and to register, visit:

**[bit.ly/2019ConservationSeries](http://bit.ly/2019ConservationSeries)**

The University of New Hampshire Cooperative Extension is an equal opportunity educator and employer. University of New Hampshire, NH Division of Forests and Lands, US Department of Agriculture and NH – counties cooperating.



**[For more Information and to Register](#)**

## **CHECK OUT MAPGEO [HERE](#)**

**A GIS Collaboration between the Strafford Regional Planning Commission and Lee bringing basic GIS (Geographic Information System) technology to your fingertips.** GIS map data is now displayed on the MapGeo website. The site allows residents to search for tax map info, as well as view several different overlay layers.



**To receive the E-CRIER via email every week go to [www.leenh.org](http://www.leenh.org), click on Subscribe to E-Alerts in the left hand column & follow the directions to subscribe. It's that easy!**

## **ATTENTION!**

If you do not have the internet please come to Town Hall for a **printed copy** or go to the Library to view it there. If you cannot leave your home please call Town Secretary Denise Duval at 659-5414 to have it mailed!