

TOWN OF LEE, NEW HAMPSHIRE

7 Mast Road
Lee, New Hampshire 03861
(603) 659-5414

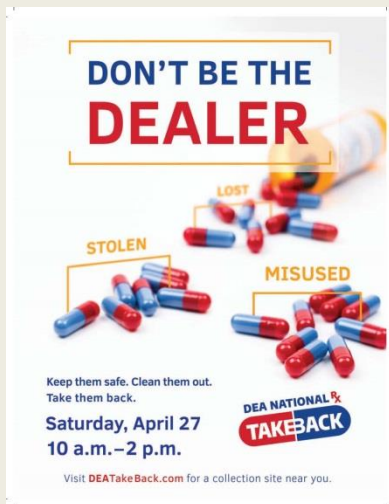
April 26, 2019

Lee News & Upcoming
Events

HAPPY ARBOR DAY



NEWS RELEASE



Lee Police Department is taking back unwanted prescription drugs. On **Saturday, April 27th**, from 10:00 am - 2 pm the Lee PD and the U.S. Drug Enforcement Administration will give the public its 17th opportunity in 9 years to prevent pill abuse and theft by ridding their homes of potentially dangerous expired, unused, and unwanted prescription drugs. Bring your pills for disposal to the Lee Police Department at 20 George Bennett Road. (Sites cannot accept liquids, needles or sharps, only pills or patches.) The service is free and anonymous, no questions asked. Last fall Americans turned in nearly 460 tons (more than 900,000 pounds) of prescription drugs at more than 5,800 sites operated by the DEA and almost 4,800 of its state and local law enforcement

partners. Overall, in its 16 previous Take Back events, DEA and its partners have taken in almost 11 million pounds—nearly 5,500 tons—of pills. Medicines that languish in home cabinets are highly susceptible to diversion, misuse, and abuse. Rates of prescription drug abuse in the U.S. are alarmingly high, as are the number of accidental poisonings and overdoses due to these drugs. For more information about the disposal of prescription drugs or about the April 27th Take Back Day event, go to www.DEATakeBack.com.



ANNUAL FISHING DERBY

Saturday, May 11th 9:00am
Stevens Farm, 28 Tuttle Road

FISH FRY

Following the Derby, 12:00 am
Little River Park

Both are FREE and open to all Lee Residents (but children must be under the age of 16)
Fishing licenses are not required

It is requested, but not necessary, to register for the derby by calling the Town Hall at 659-5414 or Cynthia at 659-2046. Registration automatically enters your child in a prize drawing. All children must be accompanied by an adult. This is a working farm so please remind your children to be respectful of fences, animals and equipment. Trash is carry-in, carry-out.

The Fish Fry will be held at Little River Park at noon. Bring your trout to the park and cook it on the grill. There will be free hot dogs and hamburgers for anyone whose fish got away. You don't need to participate in the derby to come to the Fish Fry, but we ask that you call to let us know you're coming. Bring your Frisbee, guitar, baseball glove or whiffle ball and enjoy the day.



2019 BACK YARD FARMING INITIATIVE

Monday, May 20th (Fowl)

Jeremiah Smith Grange, Lee Hook Road, Lee, NH 7:00 pm

[CLICK HERE](#) for schedule

Anne Tappan and Bambi Miller talk about ducks, geese, turkey and guinea fowl. Ruth Sample, UNH, discusses keeping chickens and vegetable gardening.

Series moderated by Chuck Cox. Sponsored by the Lee Agricultural Commission, Backyard Farming Initiative, Lee Sustainability Committee and the Lee Public Library. Series videotaped and edited by Jeremy Gasowski. Refreshments by Ruth Eifert, Director, Lee Public Library.

MAY SELECT BOARD MEETINGS

Mondays, May 6th and 20th Starting at 6:30 pm

Meetings can now be seen on  at www.media.leenh.org



"TALES OF NEW ENGLAND LIFE, The Stories of Alice Brown"

Wednesday, May 22nd 7:00 pm

Public Safety Complex

Co-hosted by Lee Public Library and Pontine Theater

Performance

Photo credit Pontine Theatre

"Pontine Theatre premieres an original stage adaptation of the short stories of Alice Brown. Brown was born in 1857 on a farm in Hampton Falls, New Hampshire, a community that later acted as a template for the villages depicted in her stories. She attended Robinson Female Seminary in Exeter, where she displayed a talent for writing at a young age. It was during her early years in Boston that Brown published her first novel *Stratford by the Sea* (1884), set in a small coastal community; it was this novel, with her rich descriptions and candid characters, that established Brown as a regional color writer. Brown was best known for her popular New England tales, mostly published from 1895 to 1910. Collected into volumes, her stories of idyllic New England life portray the traditional simplicity and bounteous goodness of country life: *Tiverton Tales* (1899), *The Country Road* (1906), *Meadow Grass* (1886), and *Country Neighbors* (1910)". – www.pontine.org

DOG WASTE PROBLEM ON TOWN OF LEE TRAILS

Apparently this has become an issue again. In 2016, the Conservation Commission and the Select Board addressed the increasing problem of dog waste being left in Little River Park, the Town Forest and other Conservation areas by installing a Pet Waste Station at Little River Park and posting signs at various trail heads throughout Town. Please tell friends and neighbors about the effect of animal waste on the environment and our health. Encourage them to clean up after their pets and to dispose of the pet waste properly. If you do not please note that you may be cited for Littering (see RSA 163.) For more information: [CLICK HERE](#) for the US EPA's "Managing Pet and Wildlife Waste to Prevent Contamination of Drinking Water" bulletin.



**CEMETERY GATES ARE NOW OPEN
FOR THE SEASON**

[CLICK HERE](#) for LEE CEMETERY RULES

RITA LANE IS NOW OPEN

PUBLIC DOCK AT DURGIN PRESERVE WILL OPEN WITHIN THE NEXT MONTH

SWAP SHOP VOLUNTEERS NEEDED

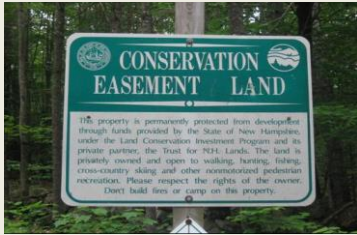
Please call Shirley McKeon at 603-659-8163 or email her at smckeon123@aol.com.

SWAP SHOP HOURS & RULES REMINDER

Swap Shop open on Saturdays only 7am–4pm until further notice.

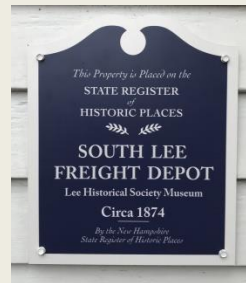
SUMMARY OF RULES

There's a 15 minute time limit. * If you cannot use it then do not take it * If an item has a bulky fee then it **must** be paid. [CLICK HERE](#) for Bulky Fees * Large items such as furniture or mattresses & broken or hazardous items are **not** accepted * **Dumping is prohibited.** Security cameras are installed. Do not be the first to get charged.



CONSERVATION MONITORING HAS BEGUN AGAIN! COME SEE CONSERVED LANDS IN LEE! EVERY WEDNESDAY MORNING

Residents are invited to join members of the Conservation Commission any Wednesday morning from now until early fall while they conduct site walks on the Town's conserved properties. Some of these lands are owned by the Town, but most of them are privately owned and protected in perpetuity with a conservation easement. If you'd like to participate, call the Town Secretary, Denise Duval, at 659-5414. Meet in the Town Hall parking lot at 8:45 a.m., dressed for walking in the woods. Standard precautions for ticks & mosquitoes are advised. Walks take 1½-2 hrs.



As you drive through the town center area, you'll notice some of the work of the Lee Heritage Commission in the form of beautiful banners and the new plaques on our town buildings that have been placed on the NH State Register of Historic Places Lee Town Hall, Lee Town Shed & Tramp Room, and the Lee Historical Society building.



Copies of the beautiful
[2019 Historic Lee, New Hampshire Wall Calendar](#)

are still on sale at:

- Lee Town Hall
- Lee Library

Reduced price while supplies last / \$5.00 each.

NEW LEE TRIVIA QUESTION!

(No prizes – just the satisfaction of confirming how much you know about your town!)

This Week's New Trivia Question: How did Wednesday Hill in Lee get its name?

The answer will be given in next week's Lee E-Crier.

Answer to last week's Lee trivia question: Barrington Oak was named due to its location at the place where the town lines of Lee, Barrington and Madbury meet.

TRANSFER STATION POP QUIZ 4/19/2019 QUESTION: Where does your trash go when it leaves the Transfer Station?

Answer: The Turnkey Recycling and Environmental (TREE) in Rochester, NH which is also a landfill-to-gas energy producer, a recreation area, a picnic area, a dog park, a golf driving range and more. [CLICK HERE](#) to read more.



I Know I Should Recycle, But... Talking trash with Jen Messeder, LSC member

If you're used to throwing everything into one trash can, then changing your habits to separate stuff out can feel inconvenient and even daunting. Here are some questions you might have.

Aren't landfills the same as compost piles – just bigger?

Landfills aren't like compost piles, which get turned so moisture and air support the natural decomposition of biodegradable waste, and most of what we send to landfills isn't biodegradable, anyway. The stuff in landfills takes a long time to break down, and the process produces liquid waste (leachate) and methane gas. In our area, UNH burns the methane collected at the Turnkey Landfill for energy.

How do I know my stuff is actually getting recycled?

This is a very good question, especially now that China has decided to refuse our refuse (and India might make the same decision soon). Why should we go to the trouble of separating out our recyclables if they're just going to end up in a landfill anyway?

First, Lee residents who are already recycling are doing a very good job with it, as are the Transfer Station staff. Our recyclables are consistently very "clean" – the items themselves are clean (no food and such on them) and they are very accurately sorted into the appropriate bins. Cleanliness increases the likelihood that recycling facilities will take our stuff and actually recycle it. Also, for recyclables that Lee earns money for, we earn more because we keep it clean and sort well. For recyclables that we have to pay to have hauled, we pay less because we keep it clean.

Second, one way to reduce solid waste is to avoid packaging in the first place. Shop with reusable bags; buy loose produce; avoid treats that come in plastic wrappers and so on. If you don't buy it, you don't have to try to recycle it.

How clean is "clean enough" to garner the financial benefits of clean recyclables?


Never fear, we don't have to fully wash things so they're clean enough to eat off of. They just need to be "trash clean."

Plastic, glass and metal containers should be well rinsed – use soap if the container is greasy. If you do dishes by hand, you could swish your containers in the soapy sink after finishing the dishes. Cardboard should not be greasy or have food stuck to it. Pizza boxes are notorious here.

I'm not sure I can fit all this into my already busy life.

We hear you. The key to making any change stick is usually to take it a little at a time. In an effort to help ease the change, we'll continue "talking trash" on the theme of reducing our solid waste one bin at a time.

Refuse • Reduce • Reuse • Repair • Repurpose • Recycle • Rot

 • Lee NH Sustainability Committee • Low Carbon Diet - Seacoast NH • "Zero Waste" groups



LEE FIRE RESCUE DEPARTMENT SEEKING CALL FIREFIGHTERS AND EMTS

[CLICK HERE](#) for more information

[BACKYARD BURNING QUICK GUIDE](#) [CATEGORY I & II FIRE SPECIFICATIONS](#)

[CLICK HERE](#) for April Safety Educator
[CLICK HERE](#) for April One Stop Educator

FIRE DEPARTMENT FEE SCHEDULE

Please [CLICK HERE](#) for the Fee Schedule

Please [CLICK HERE](#) for the Permitting Checklist and Reference Guide



Scott M. Nemet
Fire Chief

LEE FIRE & RESCUE DEPARTMENT

20 George Bennett Road
Lee, New Hampshire 03861
(P): 603.659.5411 (F): 603.659.9611



Jeffery S. Liporto
Deputy Chief

TIMELY TOPICS FOR THE SPRING SEASON

With spring approaching your fire department would like to remind everyone to consider these recommended safety practices.

- The Fire Department recommends that you change the batteries in all smoke detectors and carbon monoxide detectors. There should be at least one smoke and carbon monoxide detector on each level of your residence. If you would like suggestions on where to place smoke detectors you may call us here at the fire station and we would be glad to come to your home to help.
- Check your fire extinguishers to make sure they are fully charged and ready for use.
- Clean out your dryer vents to prevent dryer fires.
- Keep your outdoor grill clean and maintain the burners and gas lines to prevent grill fires. Keep your grill away from your house and out from under overhangs and decks when in use to prevent grill fires from spreading to your home. Keep a fire extinguisher nearby in the case of grill fires.
- If you have severe allergies especially to bees, wasps and hornets make sure your epi pen is up to date and available for immediate use in time of need. As the weather becomes warmer bees, wasps and hornets will become more active.
-

BURN PERMIT

[CLICK HERE](#) for NH BURN PERMIT RULES AND REGULATONS

WHEN SECONDS COUNT...

Can the Police, Fire, or Ambulance find your home when you need them for assistance with an emergency? Can they find it at night? Can they find it during a snowstorm?

Having your name and number on a mailbox is just not enough. Some mailboxes are clustered together. The numbers are small and the location may not mark the entrance to your driveway.

The Lee Firemen's Association, in a joint effort with the Lee Fire Department, has started a program to install reflective house number signs at driveway entrances to assist all emergency responders in locating your home in a time of need. The cost for each sign with a post is \$30.00 and it will be installed by the Lee Firemen's Association.

Please take the time NOW to SAVE TIME in an EMERGENCY
[CLICK HERE](#) for Reflective House Number Sign Request form



POLICE NOTICE

In a follow up to the request that residents properly number their homes, [CLICK HERE](#) for the Ordinance that applies. The Lee Police will be compiling a list of homes that are not complying with this ordinance and make contact with the homeowners in hopes of getting everyone in compliance which will make it easier to locate a residence in times of an emergency.

SCAM! SCAM! SCAM!

Please do not become a victim. WHEN IN DOUBT, DON'T GIVE IT OUT.

An old scam has resurfaced. Residents are being contacted by "Publisher's Clearing House" about having won the jackpot. The stipulation is that the resident must pay \$7,500 in advance. This is a scam. You will never have to pre-pay the "FDIC" for your winnings.

IMPERSONATION OF A SOCIAL SECURITY ADMINISTRATION EMPLOYEE

We sometimes receive reports where individuals have been contacted by someone pretending to be an SSA employee. The intent of this type of call is to steal your identity and/or money from your bank accounts. The caller generally asks you for personal information such as your Social Security number, date of birth, your mother's maiden name, or your bank or financial account information. The impersonator may state that "the SSA computers are down" or may refer to enrollment in the Medicare prescription drug program. It is possible that an SSA employee may contact you to follow-up on a previous application for SSA/Medicare Part D benefits or to follow-up on other business you initiated with SSA. If you are unsure as to the authenticity of someone who claims to be an SSA employee, please call SSA's toll-free number, 1-800-772-1213, to verify the reason for the contact and the person's identity prior to providing any information to the caller.

If you wish to report a call from someone you suspect is impersonating an SSA employee, please provide us with the following details:

Caller's alleged name, telephone number, time and date the call was made, information requested by the caller and any other identifying information or details about the content of the call. Please note that there are also "robocalls" from people claiming to be from the Social Security Administration.

Eversource Energy and NH Public Utilities Commission News Release
[CLICK HERE](#) To Read About How to Avoid Becoming a Victim in 2019



READY RIDES offer free rides to medical appointments for residents 55+ and those who are disabled and unable to drive. They serve Lee, Barrington, Durham, Madbury, Newmarket, Northwood, Nottingham and Strafford. Please call Meri Schmalz at 224-8719 or email info@readyrides.org with questions or go to <https://readyrides.org/> for details. **Volunteers from Lee are needed!**



WILKINSON FOOD PANTRY
Lee Church Congregational, 17 Mast Rd

The food pantry is open to **any family** in the towns of Lee, Durham, Newmarket and Nottingham. The pantry is open the 1st & 3rd Monday of each month from 6 - 7:00 pm. If there is an emergency please call the Church office at 659-2861. All visits to the pantry are strictly confidential.



A drop-off is available at the Public Safety Complex to the left of the front entrance for unused and unwanted prescriptions.

LEE TOWN COMMITTEE AND COMMISSION VACANCIES

The Planning Board, Solid Waste Advisory, Energy, LRAC and Sustainability Committees have immediate openings to be filled. If you are interested contact the Town Secretary Denise Duval at 603-659-5414 or email dduval@leenh.org. **[CLICK HERE](#)** for Application.

COMMITTEE, COMMISSION & BOARD MEETING CALENDAR

Go to www.leenh.org/Pages/LeeNH_MeetingsCal/?formid=158

LIBRARY CALENDAR

Go to http://leenh.org/pages/LeeNH_LibraryCal/?formid=158

Lee Public Library



Monday, Tuesday, Wednesday: 12:00 – 8:00 pm

Thursday, Friday: 10:00 am – 5:00 pm

Saturday: 10am – 3pm



DROP-IN TECH HELP

Wednesdays 4 - 6pm

We offer a range of services to help you become tech savvy. Come to a free drop-in tech help session! Drop-In Tech Help sessions

are held at the library on Wednesday afternoons from 4 pm - 6 pm. No appointment is required. All you need to bring are your technology questions/problems and any relevant devices.

You can get started with these [online tutorials](#) provided by Universal Class to get comfortable using basic technology and digital resources. You can also get help with online job searches, resumes, cover letters, completing forms, learning basic computer skills, and more [here](#).

*Please note that Drop-In Tech Help is meant to provide basic technology help. Please bring any devices that you have questions about. Please bring any relevant login information (e.g. usernames and passwords) for any accounts related to your questions. This is a drop in session and multiple people may show up. Sessions may be limited to 15 minutes per patron when demand is high.

Community helping Community volunteer opportunity through the Lee Public Library and Oyster River High School student “Power of One” projects.

Two ORHS students are participating in the “Power of One” program through the library. They will have donation boxes through the 1st week of May. One student is collecting feminine hygiene products; the other is collecting books and cash donations. Visit the library to lend your support.



DROP-IN CRAFT

Monday, May 20th – Saturday, May 25th
Festive Tulip



BOOKS ALIVE

Tuesdays 3:30 pm

Join our interactive after school story program that joins reading, movement, hands-on learning and creativity to bring books to life. There will be snacks. This program is geared for grades K-4 and meets after school on Tuesdays. All children ages 5-10 are welcome. **Call to Register 659-2626.**



STORY TIME
Thursdays @ 10 am

Reading, crafts, puppets, music and more. Who knows where next week's adventures may take us? Large groups and families welcome.



LEGO CLUB
Fridays 3:30 - 4:30 pm
This program ends Friday May 10th and will
resume in the fall.

Back by popular demand, Lego Club will meet on Fridays to build with the library's large Lego collection. Students may take the bus 31 from Mast Way School. **Those riding the bus need to register for this program. Space is limited to 10 on the bus and up to 20 in the program.**



Knitting for 50+
1st & 3rd Wednesdays 9 am
May 1st & 15th
Help is available from instructor Donna Kay.
All levels welcome.

Regional & State News & Events

GOVERNOR & EXECUTIVE COUNCIL MEETING WEDNESDAY, APRIL 17, 2019

[CLICK HERE](#) for the Minutes

Next Governor & Executive Council Meeting

Wednesday, May 1, 2019 10:00 am

Executive Council Chamber at the State House Concord, NH

PENNICHUCK CORPORATION'S ANNUAL MEETING

Saturday, May 4th, 2019 9:00 am

DoubleTree by Hilton, 2 Somerset Parkway, Nashua, NH

[CLICK HERE](#) for NOTICE

[CLICK HERE](#) for Annual Meeting PROXY MATERIAL

[CLICK HERE](#) for Annual Report

**DO YOU WANT TO SHARPEN YOUR CONSERVATION FIELD SKILLS?
THEN SIGN UP FOR ANY ONE OF THESE CONSERVATION TRAINING SERIES PUT ON BY THE
NHACC AND UNH EXTENSION.**

CONSERVATION TRAINING SERIES



IMPROVING WILDLIFE HABITAT ON YOUR LAND

Saturday, **March 23, 2019** • 10am – 12pm • Rindge, NH

EASEMENT MONITORING FOR VOLUNTEERS

Friday, **April 26, 2019** • 9am – 2pm • Canterbury, NH

Saturday, **May 18, 2019** • 9am – 2pm • New Durham, NH

MANAGING TOWN FORESTS: Timber, Wildlife, Recreation

Friday, **May 3, 2019** • 1pm – 4pm • Gilmanton, NH

Friday, **May 10, 2019** • 1pm – 4pm • North Conway, NH

Friday, **June 7, 2019** • 1pm – 4pm • Fremont, NH

MAP & COMPASS SKILLS

Friday, **May 24, 2019** • 1pm – 4pm • Concord, NH

INVENTORYING & MONITORING GRASSLAND BIRDS

Friday, **May 24, 2019** • 7:45am – 12pm • Amherst, NH

HOW TO LEAD A NATURE WALK

Friday, **June 28, 2019** • 1:30pm – 4:30pm • Holderness, NH

For more information and to register, visit:

bit.ly/2019ConservationSeries

The University of New Hampshire Cooperative Extension is an equal opportunity educator and employer. University of New Hampshire, NH Department of Forests and Lands, US Department of Agriculture and NH counties cooperating.



[For more Information and to Register](#)

NH DRA's ANNUAL LOW & MODERATE HOMEOWNERS PROPERTY TAX RELIEF PROGRAM

The Low and Moderate Income Homeowners Property Tax Relief provisions are designed to lessen the economic burden of the State Education Property Tax on certain taxpayers. NH residents who own a homestead subject to the State Education Property Tax, resided in the homestead as of April 1st of the year for which the claim for relief is being made, and have a total household income of \$20,000 or less if a single person (or \$40,000 or less if married or head of household) may apply for property tax relief during the filing period - **after May 1, 2019, but no later than June 30, 2019.**

Find out more information by going to the Department of Revenue Administration's [website](#).

Form DP-8, Low and Moderate Income Homeowners Property Tax Relief:

<https://www.revenue.nh.gov/forms/low-moderate.htm>

UNH COOPERATIVE EXTENSION / STRAFFORD COUNTY MASTER GARDENER ASSN

PLANT SALE

Sunday, May 19th 9:00 am – 1:00 pm (Rain or Shine)

Durham Town Hall Parking Lot

8 Newmarket Road (Route 108)

[CLICK HERE](#) for flier

If you are a Lee Resident in need of assistance with a Veteran's issue then the Lee Memorial VFW Post 10676 may be able to help.

This post serves the communities of Lee, Durham, Madbury and Newmarket and has Service Officers who can help folks with just about any Veteran's related issue. At the State level they have a seat on the SVAC (State Veterans Advisory Committee) and are linked with tens of other non-profit Veterans organizations that provide a host of services. Please contact Andy Corrow, Commander, VFW Post 10676, at 603-397-9267 or vfwpost10676@yahoo.com for assistance.



WELL WATER TESTING BROCHURE FOR RESIDENTS

[CLICK HERE](#) for NHDES Brochure

[CLICK HERE](#) for NHDES Letter

McGregor EMS Volunteers Needed

McGregor EMS is currently seeking both Medical and Non-Medical Volunteers. Those interested may email membership@mcgregorems.org. To learn more about this great service [CLICK HERE](#)!

CHECK OUT MAPGEO [HERE](#)

A GIS Collaboration between the Strafford Regional Planning Commission and Lee bringing basic GIS (Geographic Information System) technology to your fingertips. GIS map data is now displayed on the MapGeo website. The site allows residents to search for tax map info, as well as view several different overlay layers.



To receive the E-CRIER via email every week go to www.leenh.org, click on **Subscribe to E-Alerts** in the left hand column & follow the directions to subscribe. It's that easy!

ATTENTION!

If you do not have the internet please come to Town Hall for a **printed copy** or go to the Library to view it there. If you cannot leave your home please call Town Secretary Denise Duval at 659-5414 to have it mailed!