

# TOWN OF LEE, NEW HAMPSHIRE

7 Mast Road  
Lee, New Hampshire 03861  
(603) 659-5414

April 14, 2017

Lee News & Upcoming  
Events



## **RABIES CLINIC**

Saturday, April 15<sup>th</sup> 8:00 am – 12 noon  
Public Safety Complex  
Vaccines \$10 & Register Your Dog  
[CLICK HERE](#) for flyer

\*\*\*\*\*



**ANNUAL EASTER EGG HUNT**  
Saturday, April 15<sup>th</sup> 9:00 am SHARP at the  
Town Field

There is no registration and this event is  
free to all Lee children.

Thousands of eggs will be placed on the field and in the adjacent woods, filled with candy and prizes. Bring your cameras cause you'll want to capture this fun filled event!

\*\*\*\*\*

## **LEE HISTORICAL SOCIETY MUSEUM OPENS FOR SEASON**

Saturday, April 15<sup>th</sup> 10:00 am – 2:00 pm

The opening theme will be the presentation of artifacts that have been used in bread making. Also, there will be samples of bread made from recipes taken out of an herbalist bread making book published in 1987. There will also be a docent churning butter with any children that visit. The fresh butter will be served with the bread. The Museum has an impressive array of artifacts that cover all aspects of town history through the centuries, including a replica, with antiques, of a one room school house. There is no fee but donations are welcome.

\*\*\*\*\*

To receive the E-CRIER via email EVERY WEEK go to [www.leenh.org](http://www.leenh.org), click on Subscribe to E-Alerts and follow the directions to subscribe. It's that easy!

## **ATTENTION!**

If you know someone who wants to see the e-crier but does not have the internet please direct them to Town Hall for a **printed copy** or to the Library to view it there. If they cannot leave their home please call Denise Duval, Town Secretary, at 659-5414 to have it mailed!

**LEE PUBLIC LIBRARY  
CELEBRATING 125 YEARS**

Last year, the town of Lee celebrated its 250<sup>th</sup> anniversary. This year, it's the Lee Public Library's turn to celebrate 125 years of serving the citizens of Lee. Join the celebration beginning with refreshments being service on **April 21<sup>st</sup>** from 3- 5 pm at the Library!

The Lee Public Library opened in the fall of 1892 on the 2<sup>ND</sup> floor of the Town Hall. It was open every Saturday from 1 – 4 pm. The first librarian was Lizzie Stearns; her salary was \$3.00. Other expenses in the library's first full year were \$6.25 for supplies and \$23.32 for books. Fund-raising efforts began immediately – several stories in 1893 issues of the *Newmarket Advertiser* asked for donations –

“The town library is as yet rather scantily furnished, although many more books are promised. We should suggest that every family fortunate enough to possess a large stock of books should donate one or more good readable ones to the public library.”

And later that year, “The literary people in Lee are pleased with the town library. Although the number of books is limited, more are being added by individuals benevolently inclines, and it is to be hoped the shelves will be well filled in time. If every lady when she goes to the city shopping, would purchase one book and present it to the library, she would be benefiting the youth of our town, who already seem greatly interested in reading these books, according to the number of them seen there Saturday afternoons.”

In 1959, as Lee began to sell its unused schools, a warrant article at town meeting proposed that the Center School on Lee Hook Road be purchased and moved to the town center. It took three years to raise the money; the school became the library building in 1962. Additions to the building were completed in 1972, 1984 and 1996.

Today the library has grown from its original collection of 348 books in 1894 to 24,500 books, DVDs, magazines and audio books. It is currently staffed with one full-time library director (the town's 13th), a full-time circulation/assistant librarian and three part-time employees and is open 43 hours a week.

\*\*\*\*\*



**LEARN HOW TO TAKE CONTROL OF YOUR ENERGY FUTURE!**

**Saturday, April 22<sup>ND</sup> 10:00 am – Noon Public Safety Complex**

**[CLICK HERE](#) for more information on how to take control of your energy future!**

**Sponsored by the Lee Select Board. Call Sharon Meeker with questions 603-659-5441.**

\*\*\*\*\*



PHOTO BY CATHERINE FISHER

THEY'RE BACK!!!

In vernal pools throughout Lee, spotted salamanders and wood frogs are emerging and making their way to vernal pools. Spotted salamanders (pictured above) have whiled away the frozen months cozily underground, hibernating in burrows safely beneath the frost line. Wood frogs, on the other hand, have spent the winter under leaf litter in their forest homes. These small, cryptically marked, terrestrial frogs are the only North American amphibian able to live above the Arctic Circle and have mastered cryogenics - that is, each wood frog is able to withstand the freezing of 45-60% of its body during hibernation. During the winter wood frogs become, in effect, a frogcicles, lying quiescent, without respiration or heartbeat, until spring. With the return of warm temperatures, the frogs thaw and salamanders emerge from their burrows, and soon both species begin migrating to the pools where they were born. Their breeding season is brief - courtship, mating and egg-laying is often accomplished during within a few weeks, after which both salamanders and frogs return to their woodland habitat.

Anyone interested in learning more about spotted salamanders, wood frogs and vernal pools is invited to participate in one of our annual Frog Walks in the Town Forest. Sponsored by the Lee Conservation Commission, two walks are scheduled for next weekend: Twilight Frog Walk, Friday evening, **April 21<sup>st</sup> at 6:30 pm**; Morning Frog Walk, Saturday, **April 22<sup>nd</sup> (Earth Day!) at 9:30 am**. Unless it's really pouring, we'll give it a go (amphibians don't mind a little drizzle), so please dress appropriately. If we have a real drenching, then both walks will be held on Sunday the 23<sup>rd</sup>: Morning Walk, **Sunday, April 23<sup>rd</sup>, at 9:30** and Twilight Walk **Sunday, April 23<sup>rd</sup> at 6:30**. All ages welcome!

\*\*\*\*\*

### 2017 BACKYARD FARMING INITIATIVE PROGRAMS



**LOOKING BACK, MOVING FORWARD: A PERSPECTIVE OF FARMING IN LEE**

**4<sup>TH</sup> Monday of the Month 7:00 pm**

**Next one April 24<sup>th</sup>**

**JEREMIAH SMITH GRANGE, MODERATOR DON QUIGLEY**

**[CLICK HERE](#) for event calendar**

**Presented by the Lee Ag Commission and Lee Public Library**

\*\*\*\*\*

### APRIL SELECT BOARD MEETINGS

**Monday, April 24<sup>th</sup> starting at 6:30 pm**

### COMMITTEE, COMMISSION & BOARD MEETING CALENDAR

Go to [www.leenh.org/Pages/LeeNH\\_MeetingsCal/?formid=158](http://www.leenh.org/Pages/LeeNH_MeetingsCal/?formid=158)

### LIBRARY CALENDAR

Go to [http://leenh.org/pages/LeeNH\\_LibraryCal/?formid=158](http://leenh.org/pages/LeeNH_LibraryCal/?formid=158)

**ARE YOU INTERESTED IN HAVING A PRINTED LEE COMMUNITY NEWSLETTER?**

**Meeting April 26<sup>th</sup> 7:00 pm Lee Safety Complex 1<sup>st</sup> Floor**

As you may recall, for many years there was a publication called "The Lee Crier" that was mailed to each household in the town. As stated many times in the current Lee Master Plan, a number of goals include providing information, education and increasing awareness of topics contributing to the "sustainable quality of life" desirable in Lee. As a possible venue for providing that information, there seems to be a renewed interest in a printed newsletter as an informational source centered around activities and topics pertinent to the Lee community.

Be prepared to discuss the pros and cons, what kind of content would be desired, what the makeup of the group should be (i.e., strictly Town of Lee departments, committees and commissions, or a much wider community involvement?), who is going to do it, who is going to pay for it, where it should go (i.e., each household?) and how often it should be printed. Thank you for your interest!

\*\*\*\*\*

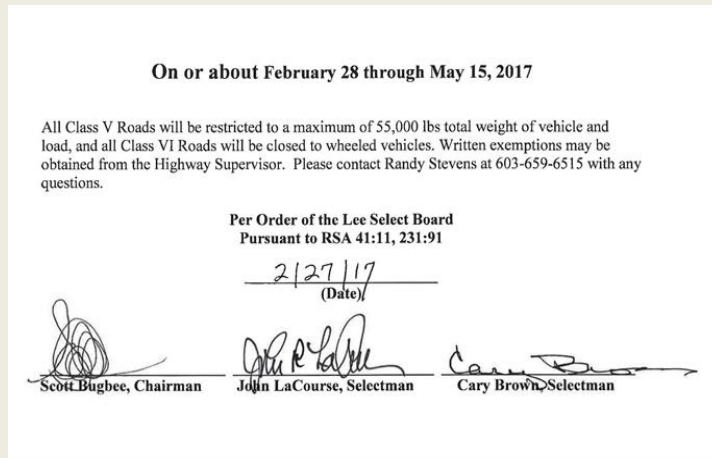
**Pat Jenkins presents "A Bit of Twist: Where Would You Be Without It?"**

**Wednesday, May 3<sup>rd</sup> 7:00pm Public Safety Complex**

With extensive experience in both spinning and weaving, Pat has taught at the UNH Thompson School in the Horticultural Technology Program; demonstrated the art of spinning at the Canterbury Village; is a member of NH Spinners and Dyers Guild; and an officer of the Northeast Hand Spinners Association. She is known throughout New England for her skills and willingness to share her knowledge. Refreshments will be served at the end of the program. Sponsored by the Lee Historical Society and the Lee Library.

\*\*\*\*\*

**WEIGHT LIMIT POSTING**



\*\*\*\*\*

**APPLY NOW FOR THE LEE TOWN COMMISSIONS AND COMMITTEES**

**AGRICULTURAL, CONSERVATION, & RECREATION COMMISSIONS;  
ENERGY & SUSTAINABILITY COMMITTEES**

Hand deliver to Town Hall or email application to the Town Secretary at [duval@leenh.org](mailto:duval@leenh.org).

[CLICK HERE](#) for Application

\*\*\*\*\*



### LEE CEMETERY RULES

[CLICK HERE](#) for Rules

CEMETERY GATES ARE **NOW OPEN** FOR THE SEASON

\*\*\*\*\*

### SELECT BOARD OFFICE HOURS

**Tuesdays & Thursdays 10 am – 2 pm Town Hall, 7 Mast Road, Lee, NH**

\*\*\*\*\*

### POLICE REMINDER

**Please do not become a victim. WHEN IN DOUBT, DON'T GIVE IT OUT.**

Please remember that the scammers are still working to obtain your information. Do NOT click on any links in emails or provide any personal or banking information either on the telephone or on the internet, unless you initiated the contact. Scammers are still using the scams we have noted before: where they state they are from the FBI, where they send you an email that your banking/credit card information needs to be updated, where they call and state they are your grandchild and need money while they are on vacation, they call or email stating they are from Microsoft and there is a problem with your computer, the list goes on and on.

\*\*\*\*\*



### LEE FIRE RESCUE DEPARTMENT SEEKING CALL FIREFIGHTERS AND EMTS

[CLICK HERE](#) for more information



**MARCH / APRIL 2017  
NH STATE FIRE MARSHAL'S OFFICE  
SAFETY EDUCATOR**

[CLICK HERE](#)

\*\*\*\*\*

### BURN PERMIT

[CLICK HERE](#) for BURN PERMIT CHECKLIST

GO TO [www.nhfirepermit.com](http://www.nhfirepermit.com) to obtain a fire permit online





**THIS IS IT!**

**THE REMAINING 250<sup>th</sup> ANNIVERSARY ITEMS at rock bottom prices!**

All items are at the Library.

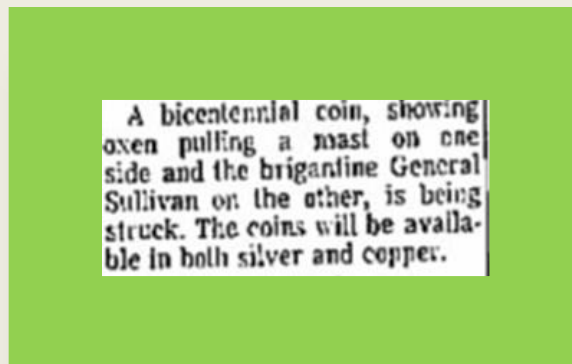
**Mugs, \$5; Adult T-Shirts, \$8; Adult Organic T-Shirts, \$5; Hats, \$10; Coins, \$8; Wooden Nickels, \$0.25; Bells, \$2; Long Sleeve Adult T-Shirts, \$10; Kids T-Shirts, \$8; Kids Tie-Dye Long Sleeve T's, \$8**

\*\*\*\*\*



LEE HERITAGE COMMISSION

**The answer to last week's trivia question:** The brigantine "General Sullivan" was built on the farm of Capt. Robert Parker in Lee, NH during the Revolutionary War. Much later, the same farm was owned by Bud and Betsy Booth, who for many years ran it as the "Green Dream Farm" on Mast Road. Another note of interest: the Portsmouth Herald (on July 23, 1966) noted that Lee's bi-centennial coin showed oxen pulling a mast on ones side of the coin and the brigantine General Sullivan on the other of the coin.



Source: The Portsmouth Herald, Portsmouth, New Hampshire, Saturday, July 23, 1966, pg. 5.

**Next week's trivia question:** In 1837, the Town of Lee purchased property on which town road to serve as its "poor farm".

**NEW HAMPSHIRE PRESERVATION  
ALLIANCE CONFERENCE**  
April 21, 2017 in Concord, NH



*This year's focus:*

*"Preserving Community Character: Critical Issues and Opportunities"*

*For Conference Info & Registration:*

<https://nhpreservation.org/preservation-conference/>

Conference reservations need to be made by April 14<sup>th</sup>

**PRICE REDUCTION!**

2017 Lee Heritage Commission Wall Calendars  
are now only \$5.00 while they last.



**The Lee Heritage Commission Wants  
Your Photos for the 2018 Wall Calendar!!**

Please share your pictures of Lee with us. A photo you share with us might end up being featured in Lee's 2018 photo calendar. Don't be shy! Let your creative self shine! This is a lovely way to show your appreciation for your hometown.

We're looking for recent photos—taken in all seasons—of Lee's historic homes, farms, barns, as well as landmarks, special features, & natural settings.

Along with each photo, please send a brief description of the subject of the photo and where it was taken in Lee. If you didn't take the photo yourself, please list the photographer so proper credit can be given in the calendar.

Photos and questions can be sent to [LeeNHCalendar@gmail.com](mailto:LeeNHCalendar@gmail.com)

Check out the Lee Heritage Commission's Fb page. We invite you to post photos or comments that are relevant to Lee's heritage. <https://www.facebook.com/LeeHeritageCommission>

## Regional & State News & Events



### WHAT'S HAPPENING IN CONCORD [CLICK HERE](#) for NH Legislative Update

\*\*\*\*\*

#### ***Livestock Workshops in Merrimack County***

*UNHCE Merrimack County, 315 DW Hwy, Boscawen*

*All of the events are at Merrimack County UNH Cooperative Extension office. All workshops run from 6:30 pm - 8:00 pm and all cost \$10.00 per person. Most allow 4-Hers for free if accompanied by a registered adult. If you have any livestock questions, please [email Dot Perkins](#) or 796-2151. If you have questions about the registration, please [email Mary West](#).*



#### **Gardening 101: Getting Down and Getting Dirty**

**May 1, Boscawen**

*Master Gardener Ann Lacroix will cover the basics of gardening and so much more. Learn how to prepare the soil, what and when to plant, how to water, mulch and fertilize and she will cover IPM (Integrated Pest Management). This free talk is for new and returning gardeners.*



#### **NH Sheep & Wool Festival**

**May 13 & 14, Deerfield**

*Dot Perkins, UNH Cooperative Extension Livestock Specialist, will once again be giving two talks at the NH Sheep & Wool Fest (both) on Sunday, May 14th. At 9:45 am, she will discuss "A Year in the Life of Sheep" and at 1:30 pm, she will discuss "Parasites: the Down and Dirty". Get a complete list of events and schedules, costs, and directions at [www.nhswqa.com](http://www.nhswqa.com)*



## 2017 Scale Clinics

### VARIOUS DATES MARCH - AUGUST 2017

The Clinic is only open to those who grow and sell their own agricultural products and who uses a scale commercially at farmers markets or a farm stand. Inspection and certification is free to growers who have 3 or fewer scales under 100 lb. capacity and no other commercial devices. Please note: no jeweler scales can be tested at these clinics.



Attendees should bring: 1. legal-for-trade scale(s) and any necessary accessories; 2. current scale license (if you have one); and 3. renewal forms and payments due (no credit cards accepted). Click [here](#) for more details & dates.

April 19 - Cheshire County

April 26- Carroll County

## Upcoming Events at Remick Museum & Farm

### VARIOUS DATES IN APRIL 2017

Remick Museum & Farm

58 Cleveland Hill Road, Tamworth, NH

Events Include:

- Full Moon Campfire Walk
- Foragers Gathering
- Remick Homeschool Class: Weaving Baskets
- School Vacation Week Activities
- Earth Day Celebration
- And much more!

Check out their [calendar of events](#) for more details.



### TUESDAY, APRIL 18

NH Audubon Center

Silk Farm Rd, Concord, NH

Agenda Includes:



- Monitoring Soil Health
- Soil Fertility & Fauna
- Northeast Region Soil Survey
- Ecological Sites
- Soil Matters
- Society of Soil Scientists of Northern NE Meeting

Click [here](#) for more details.

## NH Sheep & Wool Festival

**MAY 13 & 14, 2017**

Deerfield Fair Grounds

Festival Includes:

- Handspun Skien Contest
- Art Contest
- Fleece Sale & Judging
- Lots of great Workshops
- Youth Shows
- And much more!

Click [here](#) for more details. [Event Schedule.](#)



\*\*\*\*\*



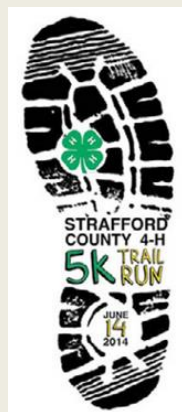
### ***RIGHT-TO-KNOW LAW EDUCATIONAL SESSION***

***Tuesday, April 25<sup>th</sup> 7:00pm***

***Durham Town Hall Town Council Chambers, Durham, NH***

The members of the Town of Lee's boards, committees, commissions and Library Board of Trustees serve as members of public boards and are responsible to act in accordance with the Right-to-Know law in the State of NH. Attorney Laura Spector Morgan from The Mitchell Group will provide an overview of the Right-to-Know law and answer any questions that the Board may have. The general public is invited and Select Board members from Lee, Madbury and Newmarket are encouraged to attend the session or to view it on Durham Community Access Television (Channel 22).

\*\*\*\*\*



### **STRAFFORD COUNTY 4-H 5K TRAIL RUN**

**Saturday, June 3<sup>rd</sup> 9:00 am – 12:00 pm**

**Gonic Waste Management Trails**

**Rochester Neck Road, Rochester, NH**

**[CLICK HERE](#) for more information**

**ALWAYS AVAILABLE IN THE COMMUNITY**

**LAMPREY HEALTH CARE  
SENIOR TRANSPORTATION PROGRAM**

Lamprey Health Care’s Senior Transportation program provides rides to essential services for individuals over the age of 60 and/or with disabilities. Our handicap-accessible buses take seniors and adults with disabilities to the grocery store, pharmacy, doctor or bank! Call 1-800-582-7214 or 659-2424 Monday - Friday, 8am - 4pm or go to [lampreyhealth.org/index.php/patient-services/transportation\\_program](http://lampreyhealth.org/index.php/patient-services/transportation_program)

\*\*\*\*\*



**READY RIDES** offer free rides to medical appointments for residents 55+ and those who are disabled and unable to drive. They serve Lee, Barrington, Durham, Madbury, Newmarket, Northwood, Nottingham and Strafford. Please call Meri Schmalz at 224-8719 or email [info@readyrides.org](mailto:info@readyrides.org) for more details about how to help your neighbor. **Volunteers from Lee are needed!**

\*\*\*\*\*



**WILKINSON FOOD PANTRY**

**Lee Church Congregational 17 Mast Rd**

The food pantry is open to **any family** in the towns of Lee, Durham, Newmarket, and Nottingham. The pantry is open the first and third Monday of each month from 6 - 7:00 pm. If there is an emergency please call the Church office at 659-2861. All visits to the pantry are strictly confidential.

\*\*\*\*\*

**Are you concerned about your child’s use of alcohol or other drugs?**

**Parents’ Support Group**

**Thursdays 7 - 8:30pm**

**Wentworth Douglass Hospital, Central Avenue, Dover**

**Walk-ins welcome**

**[CLICK HERE](#) for flyer**

Supported by a contract with N.H. Department of Health and Human Services

\*\*\*\*\*

**DISPOSAL OF PRESCRIPTION DRUGS**

**A drop-off is available at the Public Safety Complex to the left of the front entrance for unused and unwanted prescriptions.**

Lee Public Library

**COME CELEBRATE THE LIBRARY'S 125<sup>TH</sup> BIRTHDAY  
FRIDAY, **APRIL 21<sup>ST</sup>** 3-5pm at the LIBRARY  
REFRESHMENTS WILL BE SERVED**



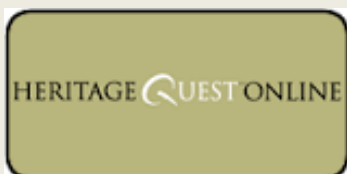
**WINTER HOURS**

**Saturday: 10:00 am – 3:00 pm**

**Monday, Tuesday, Wednesday: 12:00 – 8:00 pm**

**Thursday, Friday: 10:00 am – 5:00 pm**

**Family Research**



You have been able to discover your ancestors at the library with **Ancestry.com**. Now you can use **HeritageQuestOnline.com** at the library or from home. If you choose to search from home you will need the library's username and password to access the program. Give us a call at 659-2626 or drop by and pick up a pamphlet that provides access codes and genealogy research tips.



**New England  
Aquarium**

[neaq.org](http://neaq.org)

The library now offers the **Boston Aquarium pass** for Lee library patrons. The pass will admit up to 4 adults for \$10 each. Children under 3 are free. Regular admission price is \$26.95 for adults, \$18.95 for children 3-11 and \$24.95 for seniors.

**GET AREA MUSEUM PASSES HERE!**

Thank you to the Friends of the Lee Library who make it possible for Lee residents to visit area museums at a reduced charge. Stop by or call the library at 659-2626 to reserve your pass.

Strawbery Banke: FREE ADMISSION  
Museum of Fine Arts, Boston: 50% admission  
Currier Gallery of Art: FREE ADMISSION  
Peabody Essex Museum: 50% admission, weekdays. Discount weekend & holidays  
Boston Children's Museum (available at Durham library): 50% admission  
Isabella Stewart Gardner Museum (available at Durham library): Discount admission

Seacoast Science Center: 50% admission  
Boston Museum of Science: 50% admission  
Children's Museum of NH: 50% admission



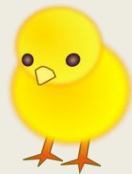
**LIBRARY LEGOS**  
**FRIDAYS THRU APRIL 22<sup>ND</sup>**  
**3:30 – 4:30 PM**

Kids in **grades K-4** can have fun at the library building cool stuff with Legos. A building theme will be suggested each week. Registration is not required. Mast Way students may arrange to ride **bus 30** directly to the library.



**PEEP INTO MY FAVORITE BOOK!**  
**SATURDAY, APRIL 8<sup>TH</sup> 10:30am - NOON**

Create a scene from one of your favorite books using marshmallow **PEEPS** for your main characters! Bring in a shoebox and the peeps you will need. We will supply all other items for your peep diorama. Dioramas will be displayed at the library! This fun event is for kids in **grades 1-8**. **Please register.**



**PEEP! PEEP! PEEP!**  
**Drop-In Craft**  
**April 24<sup>th</sup> – 29<sup>th</sup>**

Stop by during school vacation week and make some chicks, creeping and peeping in the fresh springtime grass.

## **1<sup>st</sup> OF MANY CRAFT WORKSHOPS**



**CARD & GIFT BOX MAKING**  
**Saturday, April 22<sup>nd</sup> 12:00 - 3:00pm**  
**Public Safety Complex**  
**Must Register by Monday, April 17<sup>th</sup>**



## MORE CRAFT WORKSHOPS COMING IN APRIL, MAY & JUNE

Saturdays 12:00pm – 3:00pm Public Safety Complex

Please call the library at 659-2626 to register. Limited to 12 adults.



Off-Loom Weaving (**April 29**) Silk Painting (**May 20**), Watercolor Collage (**June 3**) and Polymer Beads (**June 17**) - Sponsored by the Friends of the Lee Library.



### LOOKING FORWARD – 2017 INNOVATIONS IN FARMING

Monday, April 24<sup>th</sup> 7:00pm

Jeremiah Smith Grange

Can farming be sustainable? Dorn Cox, Agricultural Consultant; Dan Winans and Becky Sideman, UNH will answer that question as well as explore marketing, education, research and healthy living. **Sponsored by the Backyard Farming Initiative of the Lee Agricultural Commission and the Lee Public Library.**



### PET SERIES TALK

Surgery FAQs

Tuesday, April 25<sup>th</sup> 7:00 pm

Dr. Karen Woodberry of Oyster River Veterinary Hospital will be talking about issues related to pet surgery including pre-anesthetic work-up, pain control, drug choices, monitoring and post-op.



### TOE JAM PUPPET BAND

Thursday, April 27<sup>th</sup> 10:30am

Join us for a zany, wacky over the top performance by Toe Jam Puppet Band. Be prepared to sing, dance and laugh the morning away! Cosponsored by the Madbury and Durham libraries

### TINY TOTS LAPSIT

Friday mornings 10:30 am

Children up to 2 years of age

This 20 minute program offers songs, stories, music and movement with relaxed time afterwards for play and socializing. Registration is not required. **No Lapsit on April 28<sup>th</sup>.**

## ON - GOING LIBRARY PROGRAMS



**NO FOOLIN, JUST FUN  
ADULT GAME DAY  
Tuesdays at 9:30 am**

Come join the fun, make new friends and learn some new games. All are welcome! Open to all adults 18 and older.



**KNITTING GET TOGETHER  
Tuesdays, 6:30 - 8:00 pm**

Come and join other knitters for an evening of knitting and socializing.



**STORY TREKKERS  
Tuesdays, 3:30 – 4:30 pm  
Grades K-4**

Children will be introduced to a variety of authors and award-winning books. A snack, games and a craft will be included. Mast Way students may arrange to ride **Bus 30** directly to the library after school. Please **register** by calling 659-2626. **This program is currently filled but we will add names to a waiting list. No Story Trekkers on April 25<sup>th</sup>.**



**KNITTING FOR 50+  
1<sup>st</sup> & 3<sup>rd</sup> WEDNESDAYS  
April 19<sup>th</sup> 9:00 am**

A drop-in group will meet at the library. Help is available from instructor, Donna Kay. All levels welcome.



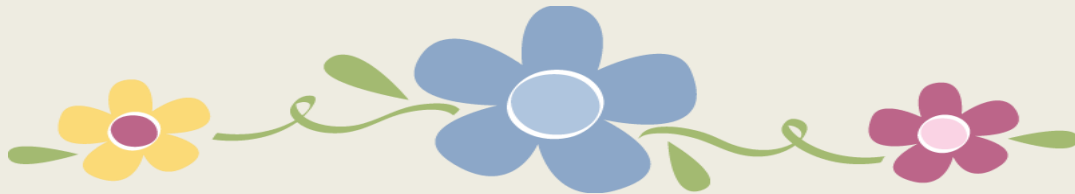
**Thursdays 10:30am  
Ages 2-6**

These fun 30 -40 minute programs include stories, songs, finger plays, flannel board and a craft. Registration is not required. **No Story Time on April 27<sup>th</sup>.**



**ROCKIN' READERS BOOK CLUB**  
**1<sup>st</sup> Thursday of the Month**  
**3:00 – 4:00 pm**

For 5th and 6th graders, participants will read and discuss a different book each month. And—pizza will be served. Students may arrange to take **bus 22** directly to the library after school. If interested, **sign up** by calling 659-2626.



**FRIENDS OF THE LEE LIBRARY**

The Friends of Lee Library is a non-profit organization that supports Lee Library activities through memberships and fundraising. Activities include museum passes, children's vacation and summer programs and adult educational programs. Not a member yet? It's easy – [CLICK HERE!](#)