

# TOWN OF LEE, NEW HAMPSHIRE

7 Mast Road  
Lee, New Hampshire 03861  
(603) 659-5414

April 12, 2019

## Lee News & Upcoming Events

### HISTORICAL SOCIETY ANNUAL MEETING

Friday, **April 12<sup>th</sup>** Jeremiah Smith Grange, 1 Lee Hook Road

**Pot luck Supper 6:00 pm / Short Meeting 7:00 pm Followed by Program**

The meeting will be followed by a program called "What's in and on your head about Lee"  
(Museum's hat collection and your Lee stories and experiences in Lee)

---

### FAMILY GAME NIGHT AND POTLUCK

Thursday, April 18<sup>th</sup> 6:30 – 8:30 pm

Mast Way School Cafeteria

Do you love board games? Please bring your favorite board game and your favorite dish and come play and meet your neighbors at our first Family Game Night! We look forward to seeing you there! Sponsored by the Lee Rec Commission.



**24<sup>th</sup> ANNUAL EASTER EGG HUNT**  
**Saturday, April 20<sup>th</sup> 9:00 SHARP Town Field**  
**Rain or snow! Dress for inclement weather!**  
**There is no registration and this event is free to all Lee children.**

Thousands of eggs will be placed on the field and in the adjacent woods, filled with candy and prizes. Bring your cameras to capture this fun filled event! **Location may change due to weather. Watch for signs and will update here next week if need be. Please no parking on Recycling Road.**



**6<sup>th</sup> ANNUAL BUNNY BREAKFAST**  
**Saturday, April 20<sup>th</sup> 7:30 am – 9:00 am**  
**Lee Church Congregational**

Join us for breakfast before the Town of Lee Easter Egg Hunt! Easter Egg Hunt begins promptly at 9:00 am next door at Mast Way School. **Menu: Pancakes, Ham, Fruit Salad & Beverages. Gluten Free Options available! Adults/\$7 ~ Kids under 12/\$5 Family of 4/\$20.** Take your picture with the Easter Bunny! All proceeds support summer camp scholarships! Thank you for your support.

MARIAHER FARM aka HICKORY NUT FARM *SPRING BABIES*



Cheviot, Southdown and Dorset Sheep





**HISTORICAL SOCIETY MUSEUM  
OPENS FOR THE SEASON  
Saturday, April 20<sup>th</sup> 10:00 am – 2:00 pm**

**May 1, 2019 “Lee’s Flora and Fauna Program” - POSTPONED UNTIL FALL 2019**

**REPLACEMENT FOR THIS MAY PROGRAM**

**“Tales of New England Life, the stories of Alice Brown”**

**May 22, 2019 – Public Safety Complex**

**Co-hosted by Lee Public Library and Pontine Theater Performance**

---



### **2019 BACK YARD FARMING INITIATIVE**

**Mondays, April 22<sup>nd</sup> (Small Livestock) and May 20<sup>th</sup> (Fowl)**

**Jeremiah Smith Grange, Lee Hook Road, Lee, NH 7:00 pm**

[CLICK HERE](#) for schedule

Donna-Lee Woods, Hickory Nut Farm, discusses goats, their care and keeping; Eleanor Kane, Brazen Farm, talks about rabbits and their care; Bob Barth, Birch Hill Farm discusses pigs; Dwight Barney, Woolmark Farm, sheep and wool talk.

---

### **APRIL SELECT BOARD MEETINGS**

**Monday, April 15<sup>th</sup> & April 22<sup>nd</sup> Starting at 6:30 pm**

Meetings can now be seen on **You Tube** at [www.media.leenh.org](http://www.media.leenh.org)

---

### **DOG WASTE PROBLEM ON TOWN OF LEE TRAILS**

Apparently this has become an issue again. In 2016, the Conservation Commission and the Select Board addressed the increasing problem of dog waste being left in Little River Park, the Town Forest and other Conservation areas by installing a Pet Waste Station at Little River Park and posting signs at various trail heads throughout Town. Please tell friends and neighbors about the effect of animal waste on the environment and our health. Encourage them to clean up after their pets and to dispose of the pet waste properly. If you do not please note that you may be cited for Littering (see RSA 163.) For more information: [CLICK HERE](#) for the US EPA’s “Managing Pet and Wildlife Waste to Prevent Contamination of Drinking Water” bulletin.

---



**They're Back!!!**

## **THE 8<sup>TH</sup> ANNUAL FROG WALK**

**Sponsored by the Lee Conservation Commission**

**Saturday, April 13<sup>th</sup> 9:30 am**

**Saturday, April 13<sup>th</sup> 6:30 pm**

Though there have been some intervening frigid days, wood frogs and spring peepers have been heard calling in various ponds and pools in Lee, and spotted salamanders will soon follow. Wood frogs, pictured above, have spent the winter under leaf litter in their forest homes. These

small, cryptically marked, terrestrial frogs are the only North American amphibian able to live above the Arctic Circle and have mastered cryogenics - that is, each wood frog is able to withstand the freezing of 45-60% of its body during hibernation. During the winter, wood frogs become, in effect, frogcicles, lying quiescent, without respiration or heartbeat, until spring. Spotted salamanders have whiled away the frozen months cozily underground, hibernating in burrows safely beneath the frost line.

Once the ground has thawed and the air has warmed sufficiently, wood frogs de-ice and spotted salamanders emerge hibernation. Then they wait for the right combination of conditions before making their way to their breeding grounds. On one of the first rainy nights with temperatures at 40 -50° these amphibians emerge, and journey to their natal pools. Occasionally, when these optimal conditions are delayed, they emerge en masse in what is referred to as the Big Night.

The breeding season of these amphibians is brief: courtship, mating and egg-laying is often accomplished within a few weeks. Following this short procreative period, both salamanders and frogs return to their woodland habitat leaving vernal pools full of the egg masses that will, in a matter of months, produce the next generation.

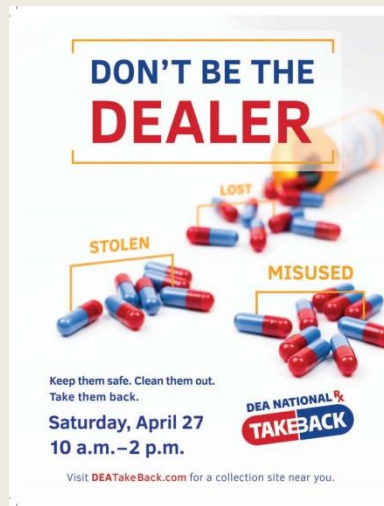
Anyone interested in learning more about wood frogs, spotted salamanders, and vernal pools is invited to participate in one of our annual Frog Walks in the Town Forest. Sponsored by the Lee Conservation Commission, and led by Catherine Fisher, two walks will be scheduled, both on Saturday, April 13. A morning walk will take place at 9:30 a.m. A twilight walk will take place at 6:30 p.m. It can still be chilly, particularly in the evenings, so please dress for the weather. A flashlight may be useful for the twilight walk's return trip. Both outings will begin at the library. All ages are welcome.

---

## **HERBICIDE USE NOTIFICATION**

NH Electric Co-op has contracted with Vegetation Control Services, Inc. to conduct an Herbicide Application Program which will selectively apply herbicides to undesirable vegetation growing within power line right of way corridors located in the Lee community. This application will be part of NHEC's Integrated Vegetation Management Program and is regulated by federal and state statutes and regulations. These requirements protect sensitive areas such as Surface Waters, Public and Private Wells, Wetlands, visually sensitive areas near roads, and/or residences. The products used have been registered with the EPA and will be applied by certified applicators according to specific label directions. Applications will be selective, in that the herbicides will be applied directly to undesirable target species. [CLICK HERE](#) for complete notice.

---



## NEWS RELEASE

Lee Police Department is taking back unwanted prescription drugs. On **Saturday, April 27<sup>th</sup>**, from 10:00 am - 2 pm the Lee PD and the U.S. Drug Enforcement Administration will give the public its 17th opportunity in 9 years to prevent pill abuse and theft by ridding their homes of potentially dangerous expired, unused, and unwanted prescription drugs. Bring your pills for disposal to the Lee Police Department at 20 George Bennett Road. (Sites cannot accept liquids, needles or sharps, only pills or patches.) The service is free and anonymous, no questions asked. Last fall Americans turned in nearly 460 tons (more than 900,000 pounds) of prescription drugs at more than 5,800 sites operated by the DEA and almost 4,800 of its state and local law enforcement partners. Overall, in its 16 previous Take Back events, DEA and its partners have taken in almost 11 million pounds—nearly 5,500 tons—of pills. Medicines that languish in home cabinets are highly susceptible to diversion, misuse, and abuse. Rates of prescription drug abuse in the U.S. are alarmingly high, as are the number of accidental poisonings and overdoses due to these drugs. For more information about the disposal of prescription drugs or about the April 27<sup>th</sup> Take Back Day event, go to [www.DEATakeBack.com](http://www.DEATakeBack.com).

---

### Per Order of the Lee Select Board on March 11, 2019 Pursuant to RSA 41:11, 231:91

On or about **March 12<sup>th</sup> through April 30, 2019**

All Class V Roads will be restricted to a maximum of 23,000 lbs. total weight of vehicle and load.  
Please contact the Lee Highway Supervisor, Steve Bullek at 603-659-6515  
for a written exception or questions.

---

### SWAP SHOP VOLUNTEERS NEEDED

Please call Shirley McKeon at 603-659-8163 or email her at [smckeon123@aol.com](mailto:smckeon123@aol.com).

### SWAP SHOP HOURS & RULES REMINDER

**Swap Shop open on Saturdays only 7am–4pm until further notice.**

#### SUMMARY OF RULES

**There's a 15 minute time limit.** \* If you cannot use it then do not take it \* If an item has a bulky fee then it **must** be paid. [CLICK HERE](#) for Bulky Fees \* Large items such as furniture or mattresses & broken or hazardous items are **not** accepted \* **Dumping is prohibited.** Security cameras are installed. Do not be the first to get charged.



## **Waste Not Want Not**

### Talking trash with Jen Messeder, LSC member

This old adage – along with “a penny saved is a penny earned” – is as true today as ever. After all, who wants to throw away good money and resources? This is why the Sustainability Committee and the Solid Waste Committee are taking a look at how much solid waste goes through the Lee Transfer Station.

Yes, this is related to the suggestion that we go to a Pay per Bag system, but we don’t know yet if that’s the right solution for Lee. In order to decide on a solution, we first need to understand the problem we’re trying to solve.

**Problem:** We’re throwing too much stuff into the solid waste bin at the Transfer Station (that’s the last bin in the line).

Are we sure this is the problem? What is the current condition, really? Short of having a volunteer or intern randomly (and confidentially) open half of the trash bags that go into that last bin (which other towns have done), how might we find out if we really are “throwing too much stuff” in that bin?

Here’s something that each household can do as a quick check – does your trash can contain things that could have been composted, recycled or handed down via the Swap Shop? If it does, you’re probably not alone.

“But,” you might ask, “so what? Why is it a problem that we throw these things in the solid waste bin?”


One part of the answer to that is the cost to the town (that is, to us taxpayers) to have our solid waste hauled to a landfill. It is the highest cost of all the bins at the Transfer Station. On the other hand, we EARN money when we recycle aluminum cans, plastics, steel cans, newsprint and corrugated cardboard. It COSTS a little to recycle mixed paper and glass, but this cost is lower than the cost of sending these materials to a landfill.

If we can move recyclables from the solid waste bin and into the appropriate recycling bins, we save money on the solid waste hauling, and usually make money overall. And if we compost what can be composted (either at home or via a service like Mr. Fox), we reduce the expense even more.

The other part of the answer is that we live on a planet with a certain amount of land area. We like to use land for many different things – places to live, places to grow food, places to work and play and places to maintain as is in their natural state. Using land for landfills limits our ability to use that land for another purpose.

We’ll continue to “talk trash” in a series of articles – stay tuned for more!

**Refuse • Reduce • Reuse • Repair • Repurpose • Recycle • Rot**

 • Lee NH Sustainability Committee • Low Carbon Diet - Seacoast NH • “Zero Waste” groups



## FROM THE SOLID WASTE COMMITTEE

Lee Recyclers Be Proud – Recently, there has been much negative publicity regarding recycling and recycling markets. The Solid Waste Committee would like to assure Lee residents that due to the high quality of the town's recyclables, the due diligence of the Transfer Station staff, and the town's long term association with the Northeast Resource Recovery Association, Lee is currently still doing quite well marketing its recyclables. Below is a chart showing tonnages and revenues for recyclables marketed in 2018. Note that the town has to pay to recycle glass and mixed paper at this time; however, the cost is still well below the cost to send these products to the landfill. Other recyclables make up the difference so in total the Town received average revenues of \$125.00 per ton for its recyclables, generating a total of 59,946.47 dollars in revenue and 38,295.12 dollars in cost avoidance. Not bad considering the market situation. Keep up the good work recycling, Lee Transfer Station staff and residents!

### Calendar Year 2018 Common Recyclables Marketed – Lee Transfer Station

2018	Tons	Revenue \$	Price/ton	Avoidance \$	Total \$
Al. Cans	13.76	20,911.20	1,519.71	1,100.80	22,012.00
Auto Bat	1.56	842.94	540.35	124.80	967.74
News	21.96	2,261.88	103.00	1,756.80	4,062.60
Mixed Paper	109.21	-(2,234.91)	- (20.46)	8,736.80	6,501.89
Cardboard	87.25	\$ 7,876.89	90.28	6,980.00	14,856.89
Glass	78.5	-(2,349.00)	- (29.92)	6,280.00	3,931.00
HDPE (MC)	8.35	2,637.77	315.90	668.00	3,305.77
HDPE (nat)	8.35	4,173.84	499.86	668.00	4,841.84
PETE	25.66	6,578.76	256.38	2,052.80	8,631.56
St Cans	21.37	3,861.87	180.71	1,709.60	5,571.47
Non Ferrous	4.43	5,303.05	1,197.08	354.40	5,657.45
Scrap Metal	97.74	10,082.18	103.15	7,819.20	17,901.38
<b>Totals</b>	<b>478.14</b>	<b>59,946.47</b>		<b>38,295.12</b>	<b>98,241.59</b>

\*Average recyclable revenue for 2018 = \$125.37/ton - Aluminum Cans are about 2 years' worth

\*\$ avoidance is \$80 per ton if sent to landfill instead of being recycled.

\*Total \$ is the revenue received plus cost avoidance which offsets other disposal and operating cost at the Transfer Station.

\*Chart does not include tires, yard waste, wood waste, electronics, textiles, books, concrete, etc. which are also recycled at the Transfer Station.





Copies of the beautiful [2019 Historic Lee, New Hampshire Wall Calendar](#) are still on sale at:

- Lee Town Hall
- Lee Library

Reduced price while supplies last / \$5.00 each.

### NEW LEE TRIVIA QUESTION!

(No prizes – just the satisfaction of confirming how much you know about your town!)

**This Week's New Trivia Question:** Where is Mud Brook in Lee, NH? North Lee, Lee Hill, or South Lee? **The answer will be given in next week's Lee E-Crier.**

**Answer to last week's Lee trivia question:** According to the State of New Hampshire's web site, Market Basket is the largest employer in the Town of Lee, NH.



### LEE FIRE RESCUE DEPARTMENT SEEKING CALL FIREFIGHTERS AND EMTS

[CLICK HERE](#) for more information

### [BACKYARD BURNING QUICK GUIDE](#) [CATEGORY I & II FIRE SPECIFICATIONS](#)

[CLICK HERE](#) for March Safety Educator

- Poison Prevention
- Barnyard Fire Safety
- Chicken Coup Safety

[CLICK HERE](#) for March One Stop Educator

### FIRE DEPARTMENT FEE SCHEDULE

Please [CLICK HERE](#) for the Fee Schedule

Please [CLICK HERE](#) for the Permitting Checklist and Reference Guide





Scott M. Nemet  
Fire Chief

# LEE FIRE & RESCUE DEPARTMENT

20 George Bennett Road  
Lee, New Hampshire 03861  
(P): 603.659.5411 (F): 603.659.9611



Jeffery S. Liporto  
Deputy Chief

## TIMELY TOPICS FOR THE SPRING SEASON

With spring approaching your fire department would like to remind everyone to consider these recommended safety practices.

- The Fire Department recommends that you change the batteries in all smoke detectors and carbon monoxide detectors. There should be at least one smoke and carbon monoxide detector on each level of your residence. If you would like suggestions on where to place smoke detectors you may call us here at the fire station and we would be glad to come to your home to help.
- Check your fire extinguishers to make sure they are fully charged and ready for use.
- Clean out your dryer vents to prevent dryer fires.
- Keep your outdoor grill clean and maintain the burners and gas lines to prevent grill fires. Keep your grill away from your house and out from under overhangs and decks when in use to prevent grill fires from spreading to your home. Keep a fire extinguisher nearby in the case of grill fires.
- If you have severe allergies especially to bees, wasps and hornets make sure your epi pen is up to date and available for immediate use in time of need. As the weather becomes warmer bees, wasps and hornets will become more active.

## BURN PERMIT

[CLICK HERE](#) for NH BURN PERMIT RULES AND REGULATIONS

## WHEN SECONDS COUNT...

Can the Police, Fire, or Ambulance find your home when you need them for assistance with an emergency? Can they find it at night? Can they find it during a snowstorm?

Having your name and number on a mailbox is just not enough. Some mailboxes are clustered together. The numbers are small and the location may not mark the entrance to your driveway.

The Lee Firemen's Association, in a joint effort with the Lee Fire Department, has started a program to install reflective house number signs at driveway entrances to assist all emergency responders in locating your home in a time of need. The cost for each sign with a post is \$30.00 and it will be installed by the Lee Firemen's Association.

**Please take the time NOW to SAVE TIME in an EMERGENCY**

[CLICK HERE](#) for Reflective House Number Sign Request form



## POLICE NOTICE

In a follow up to the request that residents properly number their homes, [CLICK HERE](#) for the Ordinance that applies. The Lee Police will be compiling a list of homes that are not complying with this ordinance and make contact with the homeowners in hopes of getting everyone in compliance which will make it easier to locate a residence in times of an emergency.

## SCAM! SCAM! SCAM!

**Please do not become a victim. WHEN IN DOUBT, DON'T GIVE IT OUT.**

An old scam has resurfaced. Residents are being contacted by "Publisher's Clearing House" about having won the jackpot. The stipulation is that the resident must pay \$7,500 in advance. This is a scam. You will never have to pre-pay the "FDIC" for your winnings.

## IMPERSONATION OF A SOCIAL SECURITY ADMINISTRATION EMPLOYEE

We sometimes receive reports where individuals have been contacted by someone pretending to be an SSA employee. The intent of this type of call is to steal your identity and/or money from your bank accounts. The caller generally asks you for personal information such as your Social Security number, date of birth, your mother's maiden name, or your bank or financial account information. The impersonator may state that "the SSA computers are down" or may refer to enrollment in the Medicare prescription drug program. It is possible that an SSA employee may contact you to follow-up on a previous application for SSA/Medicare Part D benefits or to follow-up on other business you initiated with SSA. If you are unsure as to the authenticity of someone who claims to be an SSA employee, please call SSA's toll-free number, 1-800-772-1213, to verify the reason for the contact and the person's identity prior to providing any information to the caller.

If you wish to report a call from someone you suspect is impersonating an SSA employee, please provide us with the following details:

Caller's alleged name, telephone number, time and date the call was made, information requested by the caller and any other identifying information or details about the content of the call. Please note that there are also "robocalls" from people claiming to be from the Social Security Administration.

---

**Eversource Energy and NH Public Utilities Commission News Release**  
**[CLICK HERE](#) To Read About How to Avoid Becoming a Victim in 2019**

---



**The Lee Hill Cemetery is closed for the winter.**  
**The cemetery may be accessed by foot**  
**through the open gate.**  
**LEE CEMETERY RULES**  
**[CLICK HERE](#) for Rules**



**READY RIDES** offer free rides to medical appointments for residents 55+ and those who are disabled and unable to drive. They serve Lee, Barrington, Durham, Madbury, Newmarket, Northwood, Nottingham and Strafford. Please call Meri Schmalz at 224-8719 or email [info@readyrides.org](mailto:info@readyrides.org) with questions or go to <https://readyrides.org/> for details. **Volunteers from Lee are needed!**

---



**WILKINSON FOOD PANTRY**  
**Lee Church Congregational, 17 Mast Rd**

The food pantry is open to **any family** in the towns of Lee, Durham, Newmarket and Nottingham. The pantry is open the 1<sup>st</sup> & 3<sup>rd</sup> Monday of each month from 6 - 7:00 pm. If there is an emergency please call the Church office at 659-2861. All visits to the pantry are strictly confidential.

---



A drop-off is available at the Public Safety Complex to the left of the front entrance for unused and unwanted prescriptions.

---

**LEE TOWN COMMITTEE AND COMMISSION VACANCIES**

The Planning Board, Solid Waste Advisory, Energy, LRAC and Sustainability Committees have immediate openings to be filled. If you are interested contact the Town Secretary Denise Duval at 603-659-5414 or email [dduval@leenh.org](mailto:dduval@leenh.org). [CLICK HERE](#) for Application.

---

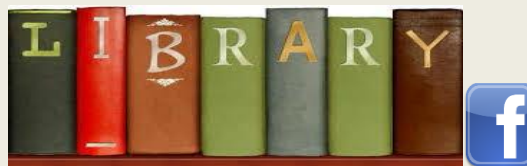
**COMMITTEE, COMMISSION & BOARD MEETING CALENDAR**

Go to [www.leenh.org/Pages/LeeNH\\_MeetingsCal/?formid=158](http://www.leenh.org/Pages/LeeNH_MeetingsCal/?formid=158)

**LIBRARY CALENDAR**

Go to [http://leenh.org/pages/LeeNH\\_LibraryCal/?formid=158](http://leenh.org/pages/LeeNH_LibraryCal/?formid=158)

---



**Monday, Tuesday, Wednesday: 12:00 – 8:00 pm**  
**Thursday, Friday: 10:00 am – 5:00 pm**  
**Saturday: 10am – 3pm**



## **DROP-IN TECH HELP**

**Wednesdays 4 - 6pm**

We offer a range of services to help you become tech savvy. Come to a free drop-in tech help session! Drop-In Tech Help sessions are held at the library on Wednesday afternoons

from 4 pm - 6 pm. No appointment is required. All you need to bring are your technology questions/problems and any relevant devices.

You can get started with these [online tutorials](#) provided by Universal Class to get comfortable using basic technology and digital resources. You can also get help with online job searches, resumes, cover letters, completing forms, learning basic computer skills, and more [here](#).

\*Please note that Drop-In Tech Help is meant to provide basic technology help. Please bring any devices that you have questions about. Please bring any relevant login information (e.g. usernames and passwords) for any accounts related to your questions. This is a drop in session and multiple people may show up. Sessions may be limited to 15 minutes per patron when demand is high.

## **Community helping Community volunteer opportunity through the Lee Public Library and Oyster River High School student "Power of One" projects.**

Two ORHS students are participating in the "Power of One" program through the library. They will have donation boxes here through the first week of May. One student is collecting feminine hygiene products; the other is collecting books and cash donations. Please visit the library to lend your support.



## **DROP-IN CRAFT**

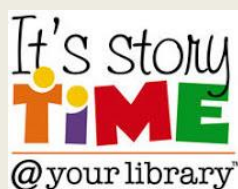
**Monday, April 15<sup>th</sup> – Saturday, April 20<sup>th</sup>**  
**Rainy Day Duck**



## **BOOKS ALIVE**

**Tuesdays 3:30 pm**

Join our interactive after school story program that joins reading, movement, hands-on learning and creativity to bring books to life. There will be snacks. This program is geared for grades K-4 and meets after school on Tuesdays. All children ages 5-10 are welcome. **Call to Register 659-2626.**



## **STORY TIME**

**Thursdays @ 10 am**

Reading, crafts, puppets, music and more. Who knows where next week's adventures may take us? Large groups and families welcome.





**LEGO CLUB**  
**Fridays**  
**3:30 - 4:30 pm**

Back by popular demand, Lego Club will meet on Fridays to build with the library's large Lego collection. Students may take the bus 31 from Mast Way School. **Those riding the bus need to register for this program. Space is limited to 10 on the bus and up to 20 in the program.**



**Knitting for 50+**  
**1<sup>st</sup> & 3<sup>rd</sup> Wednesdays 9 am**  
**April 17<sup>th</sup>**  
Help is available from instructor Donna Kay. All levels welcome.

## Regional & State News & Events

### **GOVERNOR & EXECUTIVE COUNCIL MEETING WEDNESDAY, MARCH 27, 2019**

[CLICK HERE](#) for the Minutes

Next Governor & Executive Council Meeting

**Wednesday, April 17, 2019 10:00 am**

Executive Council Chamber at the State House Concord, NH

---

### **TWO CLIMATE CHANGE EVENTS**

**April 17<sup>th</sup> and 18<sup>th</sup> 6 – 7:00 pm**

**BROUGHT TO YOU BY THE 5<sup>TH</sup> GRADERS AT OYSTER RIVER MIDDLE SCHOOL**

[CLICK HERE](#) to learn more

---

### **NH Extension Pruning Demonstrations**

#### **Various Dates and Locations**

There's nothing more satisfying than picking fruit at peak ripeness from your home orchard. With some work and know how, New Hampshire homeowners can grow a wide variety of fruits at home, including dozens of varieties of apples, pears, sour cherries, peaches, blueberries, grapes, and brambles (such as raspberries and blackberries).

One of the most important annual tasks for the home fruit grower is pruning, which UNH Cooperative Extension recommends for the early spring. When pruning isn't done right, year after year, fruit trees and small fruits often produce lower yields with lower quality fruits and are more prone to fungal diseases.

Springtime demonstrations are an opportunity to learn from experts in person and in the field. From the novice home gardeners to experienced fruit growers looking for a refresher, attending a demonstration close to you is an opportunity to network and learn proven, research-based techniques for pruning and grafting. Demonstrations also cover topics including tools, fertility, and pest control. To find a pruning demonstration near you, click [here](#).



## SELT'S ANNUAL WILD & SCENIC FILM FESTIVAL

Friday, April 12<sup>th</sup> 7pm  
The Music Hall, Portsmouth, NH  
\$20 General Admission

14 Short Films showcasing the environmental concerns and celebrations of our planet. [BUY TICKETS](#) at the Music Hall Box Office, SELT or [TheMusicHall.org](http://TheMusicHall.org).

---



## 9<sup>TH</sup> ANNUAL SEACOAST VETERANS CONFERENCE

Saturday, April 13<sup>th</sup> 8:30 am – LUNCH  
[CLICK HERE](#) for flier

---

**If you are a Lee Resident in need of assistance with a Veteran's issue then the Lee Memorial VFW Post 10676 may be able to help.**

This post serves the communities of Lee, Durham, Madbury and Newmarket and has Service Officers who can help folks with just about any Veteran's related issue. At the State level they have a seat on the SVAC (State Veterans Advisory Committee) and are linked with tens of other non-profit Veterans organizations that provide a host of services. Please contact Andy Corrow, Commander, VFW Post 10676, at 603-397-9267 or [vfwpost10676@yahoo.com](mailto:vfwpost10676@yahoo.com) for assistance.

---

## TRANSFORMING CONSERVATION LAND INTO WORKING FARMS

Tuesday, April 16<sup>th</sup> 5:00 pm – 7:30 pm  
Brentwood Community Center  
[CLICK HERE](#) for flyer



**WELL WATER TESTING BROCHURE FOR RESIDENTS**

[CLICK HERE](#) for NHDES Brochure

[CLICK HERE](#) for NHDES Letter



## University of New Hampshire Cooperative Extension

### TRAINING FOR PRIVATE PESTICIDE APPLICATORS

[CLICK HERE](#) for more information

---

### Oyster River Cooperative School Board News from April 3<sup>rd</sup> Meeting

The last day of the 2018-2019 school year will be June 19<sup>th</sup>.

Moharimet will host a free community supper on April 10<sup>th</sup> at 5:15pm. Following supper at 6:00pm, all are invited to a presentation and Q&A about the proposed middle school replacement project. Construction has started at Moharimet for the front entrance remodeling, so follow the signs through the west wing to the cafeteria.

7 ORCSD bus drivers were recently recognized for at least 5 years of safe driving records by the New Hampshire School Transportation Association. One of these was for 35 straight years!

Congratulations and thanks to our school bus drivers!

Dorothy Joy 35 years

Cindy Bushong 30 years

Melody Lamore 26 years

Brenda Belanger 20 years

Robert Dallon 5 years

Jennifer Perley 5 years

Kathryn Gibson 5 years

The school board also discussed the proposed 2019-2024 strategic plan and reviewed fall 2020 enrollment projections. The board plans to discuss the strategic plan again at its April 17<sup>th</sup> meeting and adopt it May 1<sup>st</sup>.

---

### McGregor EMS Volunteers Needed

McGregor EMS is currently seeking both Medical and Non-Medical Volunteers. Those interested may email [membership@mcgregorems.org](mailto:membership@mcgregorems.org). To learn more about this great service [CLICK HERE](#)!

---

### PENNICHUCK CORPORATION'S ANNUAL MEETING

Saturday, May 4<sup>th</sup>. 2019 9:00 am

DoubleTree by Hilton, 2 Somerset Parkway, Nashua, NH

[CLICK HERE](#) for NOTICE

[CLICK HERE](#) for Annual Meeting PROXY MATERIAL

[CLICK HERE](#) for Annual Report

---

### CHECK OUT MAPGEO [HERE](#)

A GIS Collaboration between the Strafford Regional Planning Commission and Lee bringing basic GIS (Geographic Information System) technology to your fingertips. GIS map data is now displayed on the MapGeo website. The site allows residents to search for tax map info, as well as view several different overlay layers.

---



To receive the E-CRIER via email every week go to [www.leenh.org](http://www.leenh.org), click on *Subscribe to E-Alerts* in the left hand column & follow the directions to subscribe. It's that easy!

**ATTENTION!**

If you do not have the internet please come to Town Hall for a **printed copy** or go to the Library to view it there. If you cannot leave your home please call Town Secretay Denise Duval at 659-5414 to have it mailed!