

# TOWN OF LEE, NEW HAMPSHIRE

7 Mast Road  
Lee, New Hampshire 03861  
(603) 659-5414  
February 28, 2014

## MAUD JONES FOREST TIMBER HARVEST TOUR

March 1<sup>st</sup> and 8<sup>th</sup> 9:00 am

Meet at tree farm sign on Rt. 155

The harvesting operation on the Maud Jones Tree Farm, owned by the Town of Lee and adjacent to Turtle Pond Road (Route 155), is underway. The contractor has enjoyed near perfect weather for logging with cold temperatures and good snow cover. Don Quigley will conduct a tour of the operation on two Saturday mornings for anyone interested in seeing the progression of the timber harvest.

2014 OPEN APPOINTED POSITIONS  
[CLICK HERE](#) FOR LIST, APPLICATION,  
POLICIES, RULES AND RSA: 91-A

TOWN ELECTION/BALLOT SESSION  
MARCH 11, 2014 7:00 AM – 7:00 PM  
LEE PUBLIC SAFETY COMPLEX  
SAMPLE BALLOTS NOW POSTED  
AT THE CLERK'S OFFICE

VOTER INFORMATION GUIDE  
NOW AVAILABLE  
[CLICK HERE](#) FOR A COPY



BABY GOATS BORN 2-25-14  
AT HICKORY NUT FARM



AND HERE'S ONE OF THE FIVE BORN  
LAST WEEK! JUST ADORABLE!



To receive the E-CRIER via email EVERY WEEK go to [www.leenh.org](http://www.leenh.org), click on Subscribe to E-Alerts and follow the directions to subscribe. It's that easy!

\*\*\*\*\*

## ORCSD DELIBERATIVE SESSION 2/7/2014

[CLICK HERE](#) for Minutes

## IMPORTANT DATES FOR THE ORCSD

March 11, 2014, Annual Meeting Session II - Voting Day

Durham	Oyster River High School	7:00 am – 7:00 pm
Lee	Lee Public Safety Complex	7:00 am – 7:00 pm
Madbury	Madbury Town Hall	11:00 am – 7:30 pm

March 24 – 28, 2014 9:00 – 4:00 pm, Kindergarten Registration  
Mast Way or Moharimet Elementary Schools  
[CLICK HERE](#) for more details

## School Board Candidates Questionnaire

[CLICK HERE](#)

\*\*\*\*\*

## OYSTER RIVER SCHOOLS

### SEEK COMMUNITY GARDENERS TO HELP WITH SCHOOL VEGETABLE GARDEN PROJECTS

Oyster River Schools are seeking community members to help out with the program establishing school production gardens located at each of the four schools. The main purpose of the gardens is to provide produce for the school cafeteria meals year round while supporting teacher curriculums. This effort supplements the purchase of locally grown fresh food from area farmers. If you are interested in participating, please contact Principal Dennis Harrington at [dharrington@orcscd.org](mailto:dharrington@orcscd.org)

\*\*\*\*\*

The SUPERVISORS of the CHECKLIST  
will meet at the LEE LIBRARY on  
MARCH 1<sup>st</sup> from 11:00 am – 11:30 am  
to make corrections to the checklist.

This is the LAST DAY to accept voter registration applications.  
NO ADDITIONS OR CORRECTIONS shall be made to the  
checklist AFTER this session, UNTIL ELECTION DAY.  
Voters may register or make corrections at the polls on Election Day  
March 11, 2014.

\*\*\*\*\*

\*\*\*\*\*

## RECREATION COMMISSION SEEKING:

Thoughtful, community-minded individuals of all ages to boost recreational, cultural and fitness opportunities offered by the Town of Lee. Come create programs you think would benefit Lee residents. All ideas welcome. Three vacant seats mean lots of opportunity to guide the direction of programs. Step up. Join in. Give back. Applications available at [CLICK HERE](#).

\*\*\*\*\*

## BARRY CONSERVATION CAMP

Each year the Lee Conservation Commission sponsors a campership at the Barry Conservation Camp. This camp is located at the Fish Hatchery in Berlin, NH. The 4-H Camp is operated in conjunction with the NH Department of Fish & Game. "Barry Conservation Camp emphasizes environmental awareness, responsible use of firearms, safe hunting practices, conservation principles and ethics." There is also swimming and canoeing, as well as group activities that encourage teamwork. Lee youngsters, ages 10 and up, are eligible for this campership. (The Hunter Safety & Certification Program requires ages 12 and up.) For further information, or to apply for the campership, please call Laura Gund at 659-2044 or [walgrove@comcast.net](mailto:walgrove@comcast.net).

\*\*\*\*\*

## VISIT the LEE FARMERS MARKET FB PAGE YEAR ROUND for AGRICULTURAL and COMMUNITY EDUCATION and EVENTS

[www.facebook.com/LeeFarmersMarket](http://www.facebook.com/LeeFarmersMarket)

## LEE AGRICULTURAL COMMISSION UPCOMING EVENTS

February - May: Backyard Farming Series. See below.  
Sunday, March 9<sup>th</sup>: Farm Style Breakfast 8am - Noon at the  
Jeremiah Smith Grange  
June - Sept: Lee Farmer's Market. Thursdays from 3 - 6pm.  
Saturday, Sept 6<sup>th</sup>: Lee Fair. Chicken BBQ, Pig Roast & Farm Games

## BACKYARD FARMING INITIATION PRESENTS: "LIVING HEALTHY WITH LIVING THINGS. THE BENEFICIAL ROLE OF MICROBES IN OUR FOOD AND ENVIRONMENT."

Sponsored by the Lee Agricultural Commission and  
the Lee Public Library

[CLICK HERE](#) for more information

*Join Us for Breakfast!*

**STRAFFORD COUNTY  
"FFA BLUE JACKET" FUNDRAISER**

Farmer's Breakfast  
Sunday, March 9th, 2014  
8:00 am to 12:00 pm  
Jeremiah Smith Grange Hall,  
in Lee, NH

Strafford County Farm Bureau  
and the FFA of Dover High School  
will be cooking breakfast to raise money  
for the purchase of Blue Jackets for the FFA.

Adults - \$8  
Children 12 & under - \$5



Tickets will be available at the door for an additional \$2 fee.  
Email Bruce Cilley at [bcilley@nhfarmbureau.org](mailto:bcilley@nhfarmbureau.org)  
or call 664-9064 to reserve your tickets.

Sponsored by the Lee Agricultural Commission, the Durham Agricultural Commission and Strafford County Farm Bureau.

\*\*\*\*\*

**ROCKINGHAM BIOMASS TOUR  
HELD ON NOVEMBER 8, 2013**  
[CLICK HERE](#) for more information

\*\*\*\*\*

**READY RIDES:  
VOLUNTEER TRANSPORTATION  
ASSISTANCE PROGRAM**

Great news! The town of Lee now has a curb-to-curb Volunteer Transportation Assistance Program for our 55+ residents and residents with a disability that prevents them from driving. READY RIDES, has been providing this service to the towns of Barrington, Northwood, Nottingham and Strafford, and has now expanded to include the towns of Lee, Durham, Madbury and Newmarket. But we need drivers to make this program work. Drivers may choose when they'll provide rides...could be once a week, once a month or whenever! Drivers use their own vehicles, with a mileage stipend offered by READY RIDES. Drivers must be at least 25 years old, hold a valid driver's license with a favorable driving record and have a legally registered, inspected and insured vehicle. Applicants must complete a motor vehicle and criminal background check. Driver Orientation meetings are held frequently to begin this process.

Riders must complete a one-time Registration Form to be approved for eligibility to the program. Once approved, riders need to call at least one (1) week in advance of appointment to request a ride.

**We hope you will volunteer to become a driver for our eligible residents in need. Please call 244-8719 now to learn more about becoming a driver or to request a Rider Registration form.**

## LIBRARY TRUSTEES' CORNER

While visiting at Mast Way School last week, Library Director Sharon Taylor asked children what they wanted to see in the new Library Community Center. Here are some of their answers:

- A tree house in the shape of a farm house
- A tractor to sit in, take apart and put back together.
- A pony to sit on
- A railroad that goes around the room
- A farm house to play in
- Spring animals like they have at Little River Park
- A garden to walk through on the way to the books with signs telling what things are
- A place to sit outside and read
- Kid-sized furniture (and kid-sized shelves)

Thanks to Mrs. George's third-grade class for all these wonderful ideas!

### LEE PUBLIC LIBRARY

You like us at the library, now like us on Facebook!



### LIBRARY REGULAR HOURS

Monday, Tuesday, Wednesday: 12:00 – 8:00 pm

Thursday, Friday: 10:00 am – 5:00 pm

Saturday: 10:00 am – 3:00 pm

**TICKETS FOR THE MARTHA 9<sup>th</sup> FARMERS' BREAKFAST (SUPPORTING FUTURE FARMERS OF AMERICA) MAY BE PURCHASED AT THE LIBRARY!**



### EBSCOHOST

**NoveList** on Ebscohost allows you to search for your favorite author's books and then find read-alike authors and titles as well as books in a series. Visit the library's website by clicking on the link below, choosing **Reference Databases** and then **EBSCOHOST** to find **NoveList**. Call the library at 659-2626 for the User ID and Password.

[http://www.leenh.org/Pages/LeeNH\\_Library/index](http://www.leenh.org/Pages/LeeNH_Library/index).

### BOX TOPS FOR EDUCATION

Lee Public Library is helping Mast Way Elementary's PTO by collecting box tops for the "Box Tops for Education" Program. Since 1996, the program has helped schools across America earn cash for the things they need. Box tops come from a wide variety of sources including paper towels, flour and more! To see other box top possibilities visit:

<http://www.boxtops4education.com/products/participating-products>

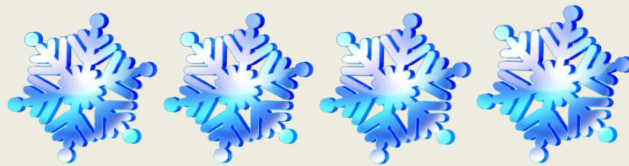
Drop your box tops off at the library and help our school out!



## SNOWFLAKE PHOTO FRAME MAGNET – DROP-IN-CRAFT

March 1

Stop by during school vacation week and decorate a snowflake magnetic frame. At home, find a favorite photo and decorate your refrigerator!



## OPEN STUDIO ART NIGHT FOR ADULTS 50+

Tuesdays beginning in March 5:15 - 7:30 pm

Come join a lively group of creative adults 50 +, who will be working on individual or group projects such as painting on slate, barrel staves, floor cloths or furniture; drawing or clay work and making greeting cards. Instruction for all projects is offered by the library's resident artist, Caroline West. Donations for adult open studio programs are greatly appreciated.



## DEVICE ADVICE

Monday, March 3 7:00 pm

Wondering what you can do with the new e-reader or tablet? Call 659-2626 or email [leelibrary@comcast.net](mailto:leelibrary@comcast.net). Let us know what kind of device you have and we will do our best to answer your questions that night or find the answers for you! Library staff will help you figure out how to use the e-reader or tablet as well as how to access NH Downloadable books and audios.

## BOOK DISCUSSION

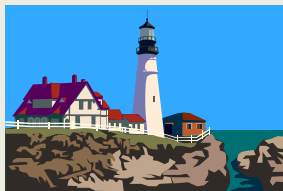
Monday, March 10<sup>th</sup> 7:00 pm

“The Night Circus” by Erin Morgenstern. Get ready to be won over. . . Part love story, part fable, and a knockout debut. . . . So sparkingly alive, you’ll swear the pages are breathing in your hands. . . . *The Night Circus* defies both genres and expectations.” –*The Boston Globe* **You can still read the book even if you can’t come to the book discussion! Pick up a copy at the library and “get ready to be won over!”**

## GREAT BAY TIME BANK

Monday, March 17<sup>th</sup> 7:00 pm

Do you need help with something? Can you offer services to help others? The Great Bay Time Bank is looking for new members. Come to the library to learn more about how a time bank works!



## **LIGHTHOUSES OF THE NH SEACOAST & SOUTHERN ME**

**Tuesday, March 18<sup>th</sup> 7:00 pm**

**Lee Safety Complex**

Join author and lighthouse historian, Jeremy D'Entremont, as he presents an overview of the history of five local lighthouses; Boon Island Light, Cape Neddick "Nubble" Light, White Island Light at the Isles of Shoals, Whaleback Light, and Portsmouth Harbor Light. Each of these locations has rich human history, with tales of hardship and heroism—and even ghosts.



## **BIRDS OF NEW HAMPSHIRE**

**Saturday, March 22<sup>nd</sup> 10:30 am**

**Lee Safety Complex**

What makes birds different from other animals? Using mounted birds, feathers, wings, feet, beaks, nests and eggs, children K-4 and their families will learn about bird habitat and basic biology in this interactive program offered by the NH Audubon Society. A REAL red-tailed hawk and peregrine falcon will be sure to steal the show! Please register by calling the library at 659-2626.



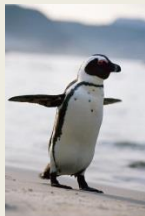
## **BREWING, MEAD AND WINE MAKING - ALCOHOLIC FERMENTATION**

**Monday, March 24<sup>th</sup> 7 pm**

**Jeremiah Smith Grange**

Come and learn about what goes into the process of brewing and wine making from experts: vintner Brian Ferguson, Annette Lee of Throwback Brewery in N. Hampton, Michael Fairbrother of Moonlight Meadery, Londonderry, nutritionist Julie McElhaney and chef Evan Mallett of Black Trumpet in Portsmouth.





**PENQUIN PUPPET DROP-IN-CRAFT**  
**Saturday, March 29<sup>th</sup>**

Drop by and make a cute penguin puppet.

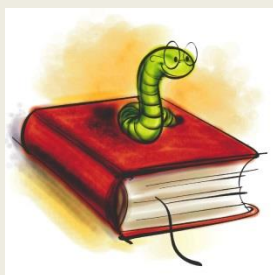
**LEARNING EXPRESS LIBRARY:**  
**24/7 LEARNING OPPORTUNITY**

The library offers **FREE** and unlimited access to computer and Internet basics tutorials as well as popular software tutorials through **Learning Express Library**. These self-paced interactive tutorials offer beginners to advanced users the ability to track their progress and can be accessed anytime, from anywhere with an Internet connection. To find out more about how you can access Learning Express Library, call 659-2626 or stop by and ask one of the staff for more information. You can also visit the Learning Express Library link on the Lee Library website: [http://www.leenh.org/Pages/LeeNH\\_Library/index](http://www.leenh.org/Pages/LeeNH_Library/index).

Please visit the following link to view the library's ongoing programs:  
[http://www.leenh.org/pages/LeeNH\\_LibraryCal/?formid=158](http://www.leenh.org/pages/LeeNH_LibraryCal/?formid=158)

**BOOKWORM DIGEST**

Sign up for the Bookworm Digest: A monthly newsletter all about everything going on at Lee Public Library - send email to [leelibrary@comcast.net](mailto:leelibrary@comcast.net) to get the Bookworm Digest sent once a month.



**FRIENDS OF THE LEE LIBRARY**

The Friends of Lee Library is a non-profit organization that supports Lee Library activities through memberships and fundraising. Activities include museum passes, children's vacation and summer programs, and adult educational programs. Thanks to your funding, the Friends of Lee Library will continue to support the wonderful activities! Not a member yet? It's easy - [CLICK HERE](#) !

## LEE HISTORICAL SOCIETY DID YOU ATTEND A SCHOOL IN LEE?

Phyllis White is resuming her research on the history of education in Lee. If you attended a One Room Schoolhouse, the Town Hall, or Mast Way Schools, or if you are a former teacher or the owner of one of the town's Day Care/Nursery Schools, Phyllis would like to hear from you. She can be reached at 659-2883.

## JOIN THE LEE FIRE RESCUE DEPT.

**The Department is always looking for new members!**

Please stop by the Safety Complex Monday - Friday 8:00 am to 4:00 pm or during one of our training meetings, held on the 2nd and 4th Thursday of each month at 7:00 pm.



## EMERGENCY NOTIFICATION SYSTEM

The Town of Lee Police, Fire & Emergency Management will now utilize the emergency notification system known as CODE RED. [CLICK HERE](#) for instructions. Please visit [leenh.org](http://leenh.org) to sign up!

## LAMPREY HEALTH CARE SENIOR TRANSPORTATION PROGRAM

Lamprey Health Care's Senior Transportation program provides rides to essential services for individuals over the age of 60 and/or with disabilities. Our handicap-accessible buses take seniors and adults with disabilities to the grocery store, pharmacy, doctor, or bank! The service is door-to-door. For reservations call 1-800-582-7214 or 659-2424 Monday-Friday, 8:00 am - 4:00 pm. Lee residents are welcome to join us for our weekly shopping run to the Fox Run Mall, Wal-Mart and many other stops. The bus currently picks up at Lee Town Hall at 8:50 a.m. on Thursdays.

## CHANNEL 13

Check your local TV channel 13 to view Selectmen's meetings aired daily at 7:00 am; 2:00 pm; 7:00 pm. [CLICK HERE](#) for more details on Channel 13. [CLICK HERE](#) to view town meetings and videos online through the media site at [leenh.org](http://leenh.org).

## MEETING CALENDAR

To view the meeting calendar on leenh.org [CLICK HERE](#)

### WILKINSON FOOD PANTRY

**Location:** Lee Church Congregational 17 Mast Rd

The food pantry is open to any family in the Town of Lee. The pantry is open the first and third Monday of each month from 6:00 - 7:00 pm. If there is an emergency need please feel free to contact the Church office 659-2861. All visits to the pantry are strictly confidential.

### STRAFFORD COUNTY CITIZEN CORPS HEALTH & SAFETY COUNCIL OF STRAFFORD COUNTY

The below web page link to the NHHS has some good information about Influenza - click on the "Senior" web page link for more information.

<http://www.dhhs.nh.gov/dphs/cdcs/influenza/index.htm>



### DISPOSAL OF PRESCRIPTION DRUGS

A drop-off box is available at the Public Safety Complex for unused and unwanted prescriptions.



Community Action Partnership  
Pregnant? New Baby? CAP Can Help!

If you are pregnant, know someone who is, or just had a baby, Community Action can help. We have a free Home Visiting program for teens and women age 25 and under. Call CAP's Home Visiting at 603-516-8108 to talk to one of our staff and learn more. For more information, visit [www.straffordcap.org](http://www.straffordcap.org).



BITS of HISTORY from  
The NEWMARKET ADVERTISER  
March 4, 1904

Last Friday evening quite a number from this town attended the Kappa Sigma reception and ball in Thompson Hall, Durham.