

TOWN OF LEE, NEW HAMPSHIRE

7 Mast Road

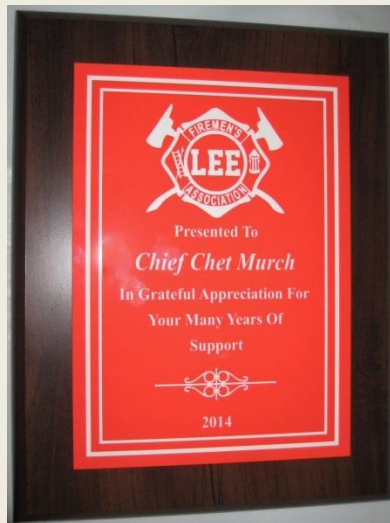
Lee, New Hampshire 03861

(603) 659-5414

February 21, 2014



THE FIRE ASSOCIATION PRESENTS
CHIEF CHET MURCH WITH A PLAQUE



THE TOWN OF LEE THANKS CHIEF MURCH
FOR 20 YEARS OF SERVICE!

Congratulations!

TOWN ELECTION/BALLOT SESSION
MARCH 11, 2014 7:00 AM – 7:00 PM
LEE PUBLIC SAFETY COMPLEX

VOTERS INFORMATION GUIDE
NOW AVAILABLE
[CLICK HERE FOR A COPY](#)



To receive the E-CRIER via email EVERY WEEK go to www.leenh.org, click on Subscribe to E-Alerts and follow the directions to subscribe. It's that easy!



THIS MUST BE HOME.....

**IMPORTANT DATES IN FEBRUARY & MARCH
FOR THE ORCS DISTRICT**

**March 11, 2014, Annual Meeting Session II
Voting Day – Vote in Town of Residence**

Durham	Oyster River High School	7:00 am – 7:00 pm
Lee	Lee Public Safety Complex	7:00 am – 7:00 pm
Madbury	Madbury Town Hall	11:00 am – 7:30 pm

**March 24 – 28, 2014 9:00 – 4:00 pm, Kindergarten Registration
Mast Way or Moharimet Elementary Schools**

[CLICK HERE](#) for more details

**NOTICE OF PUBLIC MEETING
OF THE STRAFFORD COUNTY LEGISLATIVE
DELEGATION**

Saturday, February 22, 2014, 9:00 am.

(Snow Date: Saturday, March 1, 2014, 9:00 a.m.)

**Superior Courtroom II, 2nd floor William A. Grimes Justice and
Administration Building, County Farm Road, Dover, NH**

Receive Recommendations of the Delegation Executive Committee on
Commissioners' 2014 Proposed Budget

Vote on Acceptance of the Strafford County 2014 Budget

Approve Minutes January 22, 2014 Public Hearing

Any other business which may legally come up at that time

Information and directions may be obtained in advance by contacting
the Strafford County Commissioners office at (603)516-7100.

**READY RIDES:
VOLUNTEER TRANSPORTATION
ASSISTANCE PROGRAM**

Next Driver Orientation Meeting

February 26th 10:30 am

Durham Public Library Madbury Road

Great news! The town of Lee now has a curb-to-curb Volunteer Transportation Assistance Program for our 55+ residents and residents with a disability that prevents them from driving. READY RIDES, has been providing this service to the towns of Barrington, Northwood, Nottingham and Strafford, and has now expanded to include the towns of Lee, Durham, Madbury and Newmarket. But we need drivers to make this program work. Drivers may choose when they'll provide rides...could be once a week, once a month or whenever! Drivers use their own vehicles, with a mileage stipend offered by READY RIDES. Drivers must be at least 25 years old, hold a valid driver's license with a favorable driving record and have a legally registered, inspected and insured vehicle. Applicants must complete a motor vehicle and criminal background check. Driver Orientation meetings are held frequently to begin this process. Please call 244-8719 by Monday, February 24th to register.

Riders must complete a one-time Registration Form to be approved for eligibility to the program. Once approved, riders need to call at least one (1) week in advance of appointment to request a ride.

We hope you will volunteer to become a driver for our eligible residents in need. Please call 244-8719 now to learn more about becoming a driver or to request a Rider Registration form.

BARRY CONSERVATION CAMP

Each year the Lee Conservation Commission sponsors a campership at the Barry Conservation Camp. This camp is located at the Fish Hatchery in Berlin, NH. The 4-H Camp is operated in conjunction with the NH Department of Fish & Game. "Barry Conservation Camp emphasizes environmental awareness, responsible use of firearms, safe hunting practices, conservation principles and ethics." There is also swimming and canoeing, as well as group activities that encourage teamwork. Lee youngsters, ages 10 and up, are eligible for this campership. (The Hunter Safety & Certification Program requires ages 12 and up.) For further information, or to apply for the campership, please call Laura Gund at 659-2044 or walgrove@comcast.net.

The SUPERVISORS of the CHECKLIST
will meet at the LEE LIBRARY on
MARCH 1st from 11:00 am – 11:30 am
to make corrections to the checklist.

This is the LAST DAY to accept voter registration applications. NO
ADDITIONS OR CORRECTIONS shall be made to the checklist
AFTER this session, UNTIL ELECTION DAY.

Voters may register or make corrections at the polls on Election Day
March 11, 2014.

VISIT the LEE FARMERS MARKET FB PAGE YEAR
ROUND for AGRICULTURAL and COMMUNITY
EDUCATION and EVENTS

www.facebook.com/LeeFarmersMarket

LEE AGRICULTURAL COMMISSION
UPCOMING EVENTS

February – May: Backyard Farming Series. See below.

Sunday, March 9th: Farm Style Breakfast 8am – Noon at the
Jeremiah Smith Grange

June – Sept: Lee Farmer’s Market. Thursdays from 3 – 6pm.

Saturday, Sept 6th: Lee Fair. Chicken BBQ, Pig Roast & Farm Games

BACKYARD FARMING INITIATION PRESENTS:
“LIVING HEALTHY WITH LIVING THINGS. THE
BENEFICIAL ROLE OF MICROBES IN OUR FOOD
AND ENVIRONMENT.”

Sponsored by the Lee Agricultural Commission and
the Lee Public Library

[CLICK HERE](#) for more information

OYSTER RIVER SCHOOLS SEEK
COMMUNITY GARDENERS TO HELP WITH
SCHOOL VEGETABLE GARDEN PROJECTS

Oyster River Schools are seeking community members to help out with
the program establishing school production gardens located at each of
the four schools. The main purpose of the gardens is to provide
produce for the school cafeteria meals year round while supporting
teacher curriculums. This effort supplements the purchase of locally
grown fresh food from area farmers. If you are interested in
participating, please contact Principal Dennis Harrington at
dharrington@orcsd.org

LIBRARY TRUSTEES' CORNER

The Lee Public Library Trustees would like to congratulate architect Dennis Mires for being awarded an Excellence of Design Award in the first ever New Hampshire Home Design Awards, presented by New Hampshire Home Magazine. Dennis B. Mires, The Architects, was originally chosen by the town to design the new Lee Library Community Center in 2009 and over the past year he has been working closely with the Building Committee and the trustees to refine the plans, which can be viewed at http://www.leenh.org/Pages/LeeNH_BComm/Building/LPLCC%20Drawings%2020140102.

LEE PUBLIC LIBRARY

You like us at the library, now like us on Facebook!



LIBRARY REGULAR HOURS

Monday, Tuesday, Wednesday: 12:00 – 8:00 pm

Thursday, Friday: 10:00 am – 5:00 pm

Saturday: 10:00 am – 3:00 pm

BOX TOPS FOR EDUCATION

Lee Public Library is helping Mast Way Elementary's PTO by collecting box tops for the "Box Tops for Education" Program. Since 1996, the program has helped schools across America earn cash for the things they need. Box tops come from a wide variety of sources including paper towels, flour and more! To see other box top possibilities visit: <http://www.boxtops4education.com/products/participating-products>
Drop your box tops off at the library and help our school out!

EBSCOHOST

NoveList on Ebscohost allows you to search for your favorite author's books and then find read-alike authors and titles as well as books in a series. Visit the library's website by clicking on the link below, choosing Reference Databases and then EBSCOHOST to find NoveList. Call the library at 659-2626 for the User ID and Password.
http://www.leenh.org/Pages/LeeNH_Library/index.

2014 TAX FORMS ARE HERE!

Tax forms and instruction books for 1040, 1040A and 1040EZ are available along with 2 information sheets: Find Your Way Around Health Care: Tax Implications for Individuals and Frequently Asked Questions about Discounts in the Medicare Part D Doughnut Hole.

SNOWFLAKE PHOTO FRAME MAGNET - DROP-IN-CRAFT February 22 - March 1

Stop by during school vacation week and decorate a snowflake magnetic frame. At home, find a favorite photo and decorate your refrigerator!

**LIVING HEALTHY WITH LIVING THINGS:
WHOLE GRAIN SOURDOUGH BREADS VS.
YEAST BREADS**

Monday, February 24th 7:00 pm

Jeremiah Smith Grange Hall

Mariah Roberts, owner of Beach Pea Baking Co. and Julie McElhaney, nutrition educator, GAPS practitioner, will explore the use of leavenings including sourdough, alternative grains and yeast and nutritional benefits. **Sponsored by the Lee Agricultural Commission and the Lee Public Library.**

COYOTES AND WOLVES: LIVING WITH WILDLIFE

Tuesday, February 25th 7:00 pm

Public Safety Complex

Christine Schadler is a coyote researcher and former sheep farmer. She will discuss the ecology of coyotes, coexisting with them and livestock predator avoidance.



MAGICIAN GREG MCADAMS

The Magic of Winter

Thursday, February 27th 10:30 am

Liven up vacation week by treating yourself to **The Magic of Winter**, an enchanting show starring magician Greg McAdams and his dog Axel. Cool magic tricks and hilarious puppetry will keep kids and adults amazed and laughing! This event, co-sponsored by the Lee, Madbury and Durham public libraries will be held at the Durham Public Library.



OPEN STUDIO ART NIGHT FOR ADULTS 50+

Tuesdays beginning in March 5:15 - 7:30 pm

Come join a lively group of creative adults 50 +, who will be working on individual or group projects such as painting on slate, barrel staves, floor cloths or furniture; drawing or clay work and making greeting cards. Instruction for all projects is offered by the library's resident artist, Caroline West. Donations for adult open studio programs are greatly appreciated.

DEVICE ADVICE

Monday, March 3 7:00 pm

Wondering what you can do with the new e-reader or tablet? Call 659-2626 or email leelibrary@comcast.net. Let us know what kind of device you have and we will do our best to answer your questions that night or find the answers for you! Library staff will help you figure out how to use the e-reader or tablet as well as how to access NH Downloadable books and audios.

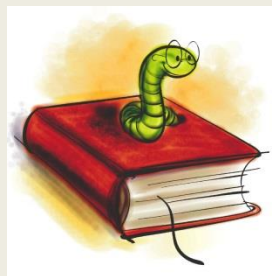
LEARNING EXPRESS LIBRARY: 24/7 LEARNING OPPORTUNIGY

The library offers **FREE** and unlimited access to computer and Internet basics tutorials as well as popular software tutorials through **Learning Express Library**. These self-paced interactive tutorials offer beginners to advanced users the ability to track their progress and can be accessed anytime, from anywhere with an Internet connection. To find out more about how you can access Learning Express Library, call 659-2626 or stop by and ask one of the staff for more information. You can also visit the Learning Express Library link on the Lee Library website: http://www.leenh.org/Pages/LeeNH_Library/index.

Please visit the following link to view the library's ongoing programs: http://www.leenh.org/pages/LeeNH_LibraryCal/?formid=158

BOOKWORM DIGEST

Sign up for the Bookworm Digest: A monthly newsletter all about everything going on at Lee Public Library - send email to leelibrary@comcast.net to get the Bookworm Digest sent once a month.



FRIENDS OF THE LEE LIBRARY

The Friends of Lee Library is a non-profit organization that supports Lee Library activities through memberships and fundraising. Activities include museum passes, children's vacation and summer programs, and adult educational programs. Thanks to your funding, the Friends of Lee Library will continue to support the wonderful activities! Not a member yet? It's easy - [CLICK HERE](#) !

LEE HISTORICAL SOCIETY DID YOU ATTEND A SCHOOL IN LEE?

Phyllis White is resuming her research on the history of education in Lee. If you attended a One Room Schoolhouse, the Town Hall, or Mast Way Schools, or if you are a former teacher or the owner of one of the town's Day Care/Nursery Schools, Phyllis would like to hear from you. She can be reached at 659-2883.

JOIN THE LEE FIRE RESCUE DEPT.

The Department is always looking for new members!

Please stop by the Safety Complex Monday - Friday 8:00 am to 4:00 pm or during one of our training meetings, held on the 2nd and 4th Thursday of each month at 7:00 pm.



EMERGENCY NOTIFICATION SYSTEM

The Town of Lee Police, Fire & Emergency Management will now utilize the emergency notification system known as CODE RED. [CLICK HERE](#) for instructions. Please visit leenh.org to sign up!

LAMPREY HEALTH CARE SENIOR TRANSPORTATION PROGRAM

Lamprey Health Care's Senior Transportation program provides rides to essential services for individuals over the age of 60 and/or with disabilities. Our handicap-accessible buses take seniors and adults with disabilities to the grocery store, pharmacy, doctor, or bank! The service is door-to-door. For reservations call 1-800-582-7214 or 659-2424 Monday-Friday, 8:00 am - 4:00 pm. Lee residents are welcome to join us for our weekly shopping run to the Fox Run Mall, Wal-Mart and many other stops. The bus currently picks up at Lee Town Hall at 8:50 a.m. on Thursdays.

CHANNEL 13

Check your local TV channel 13 to view Selectmen's meetings aired daily at 7:00 am; 2:00 pm; 7:00 pm. [CLICK HERE](#) for more details on Channel 13. [CLICK HERE](#) to view town meetings and videos online through the media site at leenh.org.

MEETING CALENDAR

To view the meeting calendar on leenh.org [CLICK HERE](#)

WILKINSON FOOD PANTRY

Location: Lee Church Congregational 17 Mast Rd

The food pantry is open to any family in the Town of Lee. The pantry is open the first and third Monday of each month from 6:00 - 7:00 pm. If there is an emergency need please feel free to contact the Church office 659-2861. All visits to the pantry are strictly confidential.

STRAFFORD COUNTY CITIZEN CORPS HEALTH & SAFETY COUNCIL OF STRAFFORD COUNTY

The below web page link to the NHHS has some good information about Influenza - click on the "Senior" web page link for more information.

<http://www.dhhs.nh.gov/dphs/cdcs/influenza/index.htm>



DISPOSAL OF PRESCRIPTION DRUGS

A drop-off box is available at the Public Safety Complex for unused and unwanted prescriptions.



**Community Action Partnership
Pregnant? New Baby? CAP Can Help!**

If you are pregnant, know someone who is, or just had a baby, Community Action can help. We have a free Home Visiting program for teens and women age 25 and under. Call CAP's Home Visiting at 603-516-8108 to talk to one of our staff and learn more. For more information, visit www.straffordcap.org.



Blizzard of 1904

**BITS of HISTORY from
The NEWMARKET ADVERTISER
March 4, 1904**

We think the rural delivery mail carriers much have enjoyed their holiday on Monday, the 22nd, after their hard experience of the preceding week. In many places they found the snow-drifts ten feet deep.