

# TOWN OF LEE, NEW HAMPSHIRE

7 Mast Road

Lee, New Hampshire 03861

(603) 659-5414

February 6, 2015

## CONGRATULATIONS MARTIN CASTLE!



I would like to take the time to acknowledge Firefighter/Emergency Medical Technician Martin Castle. After 12 years on the Lee Fire & Rescue Department, Martin has retired. Martin held many positions in the fire department serving first as an Emergency Medical Technician-Basic and later on obtaining his Emergency Medical Technician-Intermediate and Firefighter Level I certifications. He also held the position of Emergency Medical Services Coordinator and Lieutenant. Martin has been a vital part of this organization and has dedicated countless hours to the Town of Lee. From all of us, thank you Martin for your loyal service and best wishes.

Scott Nemet  
Chief of Department

\*\*\*\*\*

## STATE FIRE MARSHALL WARNS OF BUILDING COLLAPSE DANGER

NH DEPARTMENT OF SAFETY  
DIVISION OF FIRE SAFETY  
NEWS AND EVENTS

For News Release dated 2/5/15 go to:

[http://www.nh.gov/safety/divisions/firesafety/news/20150205-  
building-collapse.htm](http://www.nh.gov/safety/divisions/firesafety/news/20150205-building-collapse.htm)

FUTURE **OPENING** AS THE LEE REPRESENTATIVE  
ON THE LAMPREY REGIONAL COOPERTIVE  
JOINT BOARD STARTING 4/1/2015  
Please Call Town Hall at 659-5414 For Details

KEEP YOUR EYE OPEN FOR A LIST OF OPENINGS  
FOR COMMITTEE AND COMMISSION MEMBERS  
WITHIN THE NEXT MONTH

**It's a great way to be involved and  
contribute to your community.**

[CLICK HERE](#) for an application & deliver to the Town Hall

\*\*\*\*\*



“FERN” ROSSI

She looks like a sheep, but is actually an angora goat.

\*\*\*\*\*



BACKYARD FARMING INITIATIVE SERIES 2015  
PRESENTS FIVE NIGHTS, 10 FARMS: EXPLORE  
YOUR FARMING DREAMS

**NEXT DISCUSSION Monday, February 23<sup>rd</sup> 7:00 pm**

Jeremiah Smith Grange Hall, Lee Hook Road, Lee

[CLICK HERE](#) for schedule



### LICENSE PLATE DESIGN CONTEST

The Lee Police and Lee Fire Associations are working with the members of the 250<sup>th</sup> Anniversary Planning Committee to purchase commemorative license plates to be used during 2016. There is a contest for the best design for the Lee 250<sup>th</sup> license plate. The winning license plate will be chosen by the 250<sup>th</sup> Anniversary Planning Committee. The rules for the design are that the design has to be done freehand without any shadowing. We are looking for a design that is representative of the town's history. [CLICK HERE](#) to view the design that the Town of Fremont used for their 250<sup>th</sup> commemorative plate. Please submit your entries to the Police Department by **February 27, 2015**. Email entries accepted at [restee@leenhpolice.org](mailto:restee@leenhpolice.org). Good luck!

\*\*\*\*\*

### BE CAREFUL WHERE YOU PUT THAT SNOW!



### TOWN ORDINANCE : SNOW CASTING

This ordinance reads in part "Be it hereby ordained that NO PERSON shall throw or allow to be thrown, cast, placed or deposited any snow or ice into or upon the plowed portion of any street, sidewalk or public way in the Town of Lee, it being the intent and purpose of this ordinance to prohibit all persons from throwing, casting, placing or depositing snow and ice in such manner as to become a hazard to vehicular or pedestrian traffic." The fine for this violation can be up to \$100.00 (one hundred dollars).

\*\*\*\*\*

### CHILD CARE WEATHER WATCH

Below a Child Care Weather Watch recommendation from the American Academy of Pediatrics. Although it refers to child care providers it works as a great guide for moms and dads.

<http://www.idph.state.ia.us/hcci/common/pdf/weatherwatch.pdf>

\*\*\*\*\*

# Farm to Institution SUMMIT 2015

APRIL 7-9 UMASS AMHERST



Registration is now open for the Farm to Institution Summit taking place in Amherst, Massachusetts! The Summit is a first-year conference that will bring together at least 800 leaders from the Northeast who are working to get more local and regional food into schools, colleges, health care and other institutions. With over 50 workshops offered in the Farm to School, Farm to College and Farm to Health Care sectors, this is a landmark event not to be missed!

Please make note: the early bird deadline to save on registration is March 2, 2015. After March 2<sup>nd</sup>, registration fees will increase by at least \$20/day. Online registration will close March 30<sup>th</sup> and walk-in registration is not guaranteed.

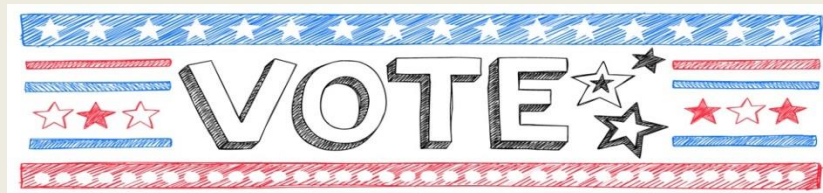
Register Now at: [www.regonline.com/builder/site/?eventid=1673184](http://www.regonline.com/builder/site/?eventid=1673184)

Additionally, if you are in need of a financial scholarship, please go to <http://www.farmtoinstitution.org/summit#scholarships>

Scholarship applications will be accepted until March 2nd.

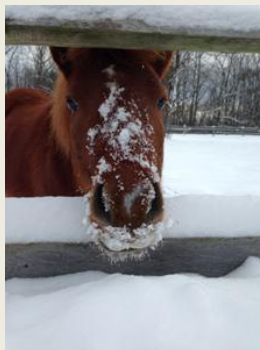
Please visit the **Conference Website** for more information about the programming ~ keynotes, workshop descriptions and more: [www.farmtoinstitution.org/summit](http://www.farmtoinstitution.org/summit).

\*\*\*\*\*



**TOWN OF LEE BALLOT SESSION**  
**MARCH 10, 2015 7:00 AM – 7:00 PM**  
**PUBLIC SAFETY COMPLEX**

\*\*\*\*\*



**MORE SNOW?! WHERE WILL I PUT MY HEAD?**



**LEE HISTORICAL SOCIETY is seeking a  
VOLUNTEER TREASURER to start APRIL 10, 2015**

This position is responsible for all banking, filing State and Federal tax forms, maintaining membership lists and reporting to the Board of Directors. The Lee Historical Society is a 501c3 and a NH Charitable Corporation. This year's Annual Meeting is on April 10, 2105. Interested applicants may reach out to Phyllis White, Historical Society Secretary, at [PhyllisWhite@comcast.net](mailto:PhyllisWhite@comcast.net) or call Lee Town Hall, 7 Mast Road, Lee, NH 03861.

\*\*\*\*\*

**SENIOR ADVISORY COMMITTEE**

The Senior Advisory Committee meets next on Monday, February 9<sup>th</sup>, 9:00 am at the Safety Complex, weather permitting. If you have a question about the meeting date and are planning to attend, please call Shirley Walker at 603-659-5786.

At our last meeting in January, senior housing was one topic of discussion. If you would like to share your opinion on senior housing in our community please contact Nancy at [NancyAliceR@cs.com](mailto:NancyAliceR@cs.com).

SAC and the Lee Library sponsor the Knitting Gathering held twice monthly on Wednesdays from 9:00-11:00 am at the library. Our next meeting date is February 18<sup>th</sup>.



**FAMILY NATURE WALK AT LEE TOWN FOREST  
SATURDAY, FEBRUARY 7<sup>TH</sup> is CANCELED**

We've crossed the cross-quarter (groundhog's day) which means that winter is half over, but it feels like winter is just getting started. With snow more than three feet deep in the woods, the going is too difficult to attempt a walk this Saturday. We'll try again next Saturday (Feb. 14). We meet at 9:30 am behind the backstop of the baseball field adjacent to Mast Way School. All ages welcome! Monthly family nature walks are sponsored by the LCC and the SAC.



### **READY RIDES NEEDS DRIVERS from LEE!**

READY RIDES offer free rides to medical appointment for residents 55+ and those who are disabled and unable to drive. They serve Lee, Barrington, Durham, Madbury, Newmarket, Northwood, Nottingham and Strafford. Drivers receive 25 cents per mile and can pick what rides they want to do. Drivers must be at least 25 years old, have a valid driver's license and a favorable driving record with a legally registered, inspected and insured vehicle. You will need to complete a volunteer application that includes a motor vehicle and criminal background check. Please call Meri Schmalz at 224-8719 or email [info@readyrides.org](mailto:info@readyrides.org) for information about how to help your neighbor.

\*\*\*\*\*

### **LIBRARY TRUSTEES' CORNER**



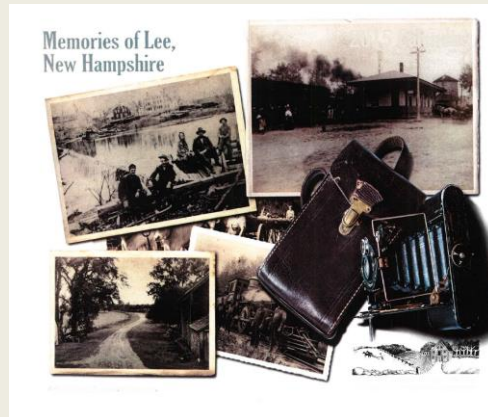
At the Deliberative Session on January 31<sup>st</sup>, residents voted to amend Warrant Article #7 (the bond for the Library Community Center) by raising the amount of the bond to \$1.3 million in order to include the larger community room in the project now rather than adding it to the building later when construction costs would be higher. The budget for the 8,810 sq. ft. building is now set at \$2,516,000. Other monies will come from the funds already set aside in capital reserve funds and from fund-raising, in-kind donations and cost reductions. The current estimated rate for a 20-year bond for the June 2015 bond sale is 4%. If the bond is procured in June, the highest tax impact will be in 2016; each year thereafter, the bond's tax impact will be reduced.

With interest rates and construction costs beginning to increase, it makes sense to invest **NOW** in Lee's future.

***Working together, Lee can build it!***

\*\*\*\*\*

ON SALE AT TOWN HALL!  
2015 MEMORIES OF LEE, NH CALENDAR



CREATED BY THE LEE HERITAGE COMMISSION IN  
COLLABORATION WITH THE LEE HISTORICAL SOCIETY

\*\*\*\*\*

STILL ON SALE AT TOWN HALL!

**The Early Mills and Industry of Lee, NH**  
Compiled and researched by Randy Stevens and  
Susan Wellington  
Proceeds to benefit the Heritage Commission

\*\*\*\*\*

**WANTED**

HISTORIC PHOTOS OF LEE  
[CLICK HERE](#) for more information



DOES ANYONE KNOW WHO THIS IS?  
Please email [heritage@leenh.org](mailto:heritage@leenh.org) or call Town Hall at 659-5414.

\*\*\*\*\*

## TOWN OF LEE NOW OFFERS ONLINE SERVICES



for car registration renewals, dog licenses, vital records and property taxes. To access the new online services, please visit the Town of Lee's website at [www.leenh.org](http://www.leenh.org). Credit/debit cards and ACH payments (bank-to-bank transfers) will be accepted for all online transactions. Credit/debit card and internet processing fees will apply.



The Town Clerk/Tax Collector's office now accepts MasterCard, Visa, American Express, and Discover credit cards; debit cards that display these logos are also accepted. **Please note:** There are additional fees to cover the cost of using a credit or debit card - 2.95% of the total transaction with \$1.50 minimum. These convenience fees go directly to the Town of Lee's third party credit/debit card processor and are not retained by the Town of Lee. Convenience fees cannot be refunded. Cash and checks are still accepted forms of payment and do not require additional fees.



### LEE PUBLIC LIBRARY

You like us at the library, now like us on Facebook!



### LIBRARY REGULAR HOURS

Monday, Tuesday, Wednesday: 12:00 – 8:00 pm

Thursday, Friday: 10:00 am – 5:00 pm

Saturday: 10:00 am – 3:00 pm





### ADULT BOOK DISCUSSION

Monday, February 9<sup>th</sup> 7:00 pm

“Where’d You Go Bernadette” by Maria Semple. “Semple pieces together a modern-day comic caper full of heart and ingenuity....a compelling composite of a woman's life-and the way she's viewed by the many people who share it...."*Publisher's Weekly (Starred Review)*

Copies of the book are available at the library. All are welcome to participate.

### “Creating Connections: Building Community Through the Arts”

This is the 4th in a series of workshops on a variety of art techniques

Rescheduled from January 27<sup>th</sup>



### BEGINNING QUILTING

Tuesday, February 17<sup>TH</sup> 6:00 pm

If you have been dreaming about learning to quilt then this workshop is for you. Katrina Rhodes, owner of the Fabric Garden quilt shop in Barrington will be teaching this workshop for people new to quilting. She will cover the basics, tools and how to use them, and then guide participants in sewing a small project to help with understanding the techniques being taught. A project kit will be provided for this workshop. **Participants should have basic sewing skills and will need to bring a sewing machine to the class. A supply list will be provided at time of registration. Limited to 6 ages 15 and up. Please register by calling 659-2626.**



### LADYBUG VALENTINE TIC TAC TOE

Drop-In Craft

Saturday, February 14<sup>TH</sup>

Create a ladybug tic-tac-toe game. Then use foam hearts to fill in squares.



### MAKE A SNOWMAN – DROP-IN CRAFT

February 21<sup>ST</sup> – 28<sup>TH</sup>

Stop by and make a soft, cotton snowman with a carrot nose of course!



### BEN RUDNICK AND FRIENDS

Thursday, February 26<sup>TH</sup> 10:30 am

Join us as musicians Ben Rudnick and Friends entertain with fun-to-sing lyrics, guaranteed to get you up and dancing! Co-sponsored with the Durham and Madbury Libraries, this event will be held at the Durham Public Library. Thank you to the Friends of the Lee Public Library for providing funding.



### ZENTANGLE® WORKSHOP

Tuesday, March 3<sup>rd</sup> 6:00 pm

Zentangle® is an easy-to-learn, relaxing and fun way to create beautiful images by drawing structured patterns. The process of tangling was created by Maria Thomas, a world-renowned calligrapher and Rick Roberts, a musician and former Zen monk. Zentangle® is enjoyed by a wide range of skills and ages and can be achieved by all “...one stroke at a time!” There is a \$10 materials fee for this class taught by Jean Kearney. Limited to 10, ages 15 and up. Please register by calling 659-2626. Co-sponsored by the Lee Library and the Friends of the Lee Library.

## ON - GOING PROGRAMS



**Thursday & Friday at 10:30 am**

These fun 30 - 40 minute programs include stories, songs, finger plays, flannel board and a craft. Registration is not required.



### **NO FOOLIN, JUST FUN – ADULT GAME DAY**

**Tuesdays at 9:30 am**

Come join the fun, make new friends and learn some new games. All are welcome! Open to all adults 18 and older.



### **STORY TREKKERS**

**Tuesdays 3:30 – 4:30 pm Ages 6-10**

Read a variety of authors and award-winning books. Snack, games and a craft included. Most way students ride bus 23. **Please register. This program is currently filled and has a waiting list.**



### **KNITTING GET TOGETHER**

**Tuesdays, 6:30 - 8:00 pm**

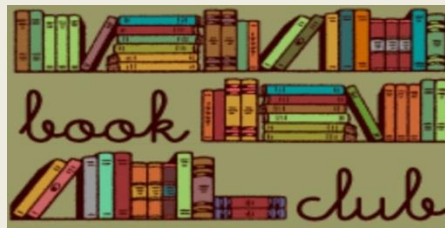
Come and join other knitters for an evening of knitting and socializing. Bring that project you've been meaning to finish and make some new friends. Sorry, there are no instructors.



### KNITTING FOR 50+

**ALTERNATE WEDNESDAYS, NEXT FEB 4<sup>th</sup> & 18<sup>th</sup> 9AM**

A drop-in group will meet at the library. Help is available from instructor, Donna Kay. All levels welcome. **Offered by the Senior Advisory Committee in conjunction with the Lee Library.**



### ROCKIN' READERS BOOK CLUB

**Thursdays 3:00 – 4:00 pm**

**5<sup>th</sup> & 6<sup>th</sup> Graders**

Read/discuss a different book per month. Take bus 21. **Please register.**

### **THE LIBRARY HAS THE FOLLOWING MUSEUM PASSES!**

Boston Children's Museum	Strawbery Banke
Boston Museum of Science	Children's Museum of NH
Currier Museum of Art	Isabella Stewart Gardner Museum
Museum of Fine Arts Boston	Seacoast Science Center
Mariposa Museum & World Culture Center in Peterborough, NH	

Check out their websites to see what is happening and then get a pass from the library that offers free or reduced admission.



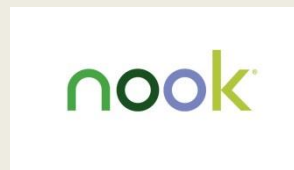
### **MARIPOSA MUSEUM AND WORLD CULTURE CENTER Peterborough, NH**

Thanks to the generosity of the Friends of the Lee Public Library, we now have a membership to the Mariposa Museum and World Culture Center. The pass admits 2 adults & 2 children for free. Check out their website [www.mariposamuseum.org](http://www.mariposamuseum.org).



## CURRIER MUSEUM OF ART Manchester, NH

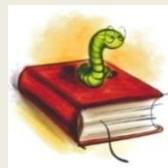
Our pass to the Currier courtesy of the Friends of the Lee Public Library, admits up to 2 adults for free. Children under 18 are also free. Upcoming exhibits include, Still Life: 1970's Photorealism, Audubon's Wild Animals of North America, Witness to History: James Nachtwey Photography, and Killer Heels: The Art of the High Heeled Shoe. Check out their website for all their programs: [www.currier.org](http://www.currier.org).



**Did you know** the library has a Kindle and a Nook available for checkout? Great opportunity to explore whether or not you like reading on an electronic device!

### BOOKWORM DIGEST

Sign up for the Bookworm Digest: A monthly newsletter all about everything going on at Lee Public Library. Send an email to [leelibrary@comcast.net](mailto:leelibrary@comcast.net) to get the Bookworm Digest sent once a month.



Please visit the following link to view all the library's programs: [leelh.org/pages/LeeNH\\_LibraryCal/?formid=158](http://leelh.org/pages/LeeNH_LibraryCal/?formid=158)



### FRIENDS OF THE LEE LIBRARY

The Friends of Lee Library is a non-profit organization that supports Lee Library activities through memberships and fundraising. Activities include museum passes, children's vacation and summer programs, and adult educational programs. Thanks to your funding, the Friends of Lee Library will continue to support the wonderful activities! Not a member yet? It's easy - [CLICK HERE](#) !

## LAMPREY HEALTH CARE SENIOR TRANSPORTATION PROGRAM

Lamprey Health Care's Senior Transportation program provides rides to essential services for individuals over the age of 60 and/or with disabilities. Our handicap-accessible buses take seniors and adults with disabilities to the grocery store, pharmacy, doctor, or bank! For reservations or more information call 1-800-582-7214 or 659-2424 Monday through Friday, 8:00am - 4:00pm or go to [lampreyhealth.org/index.php/patient-services/transportation\\_program](http://lampreyhealth.org/index.php/patient-services/transportation_program)



### JOIN THE LEE FIRE RESCUE DEPT.

**The Department is always looking for new members!**

Please stop by the Safety Complex Monday - Friday 8:00 am to 4:00 pm or during one of our training meetings, held on the 2nd and 4th Thursday of each month at 7:00 pm.



### EMERGENCY NOTIFICATION SYSTEM

The Town of Lee Police, Fire & Emergency Management utilizes the emergency notification system **CODE RED**. Visit [leenh.org](http://leenh.org) to sign up!



### CHANNEL 13

Check your local TV channel 13 to view Selectmen's meetings aired daily at 7:00 am; 2:00 pm; 7:00 pm. [CLICK HERE](#) for more details on Channel 13. [CLICK HERE](#) to view town meetings and videos online through the media site at [leenh.org](http://leenh.org).

Sun	Mon	Tue	Wed	Thu	Fri	Sat
				1	2	3
4	5	6	7	8	9	10
11	12	13	14	15	16	17
18	19	20	21	22	23	24
25	26	27	28	29	30	

### MEETING CALENDAR

To view the meeting calendar on [leenh.org](http://leenh.org) [CLICK HERE](#)



## DISPOSAL OF PRESCRIPTION DRUGS

A drop-off box is available at the Public Safety Complex for unused and unwanted prescriptions.

## STRAFFORD COUNTY CITIZEN CORPS HEALTH & SAFETY COUNCIL OF STRAFFORD COUNTY

Click on the "Sr" web page link for more information about Influenza.  
[dhhs.nh.gov/dphs/cdcs/influenza/index.htm](http://dhhs.nh.gov/dphs/cdcs/influenza/index.htm)



## WILKINSON FOOD PANTRY

Lee Church Congregational 17 Mast Rd

The food pantry is open to any family in the Town of Lee. The pantry is open the first and third Monday of each month from 6 - 7:00 pm. If there is an emergency please call the Church office at 659-2861. All visits to the pantry are strictly confidential.



**Community Action Partnership**  
**Pregnant? New Baby? CAP Can Help!**

If you are pregnant, know someone who is, or just had a baby, Community Action can help. We have a free Home Visiting program for teens and women age 25 and under. Call CAP's Home Visiting at 603-516-8108 to learn more or visit [www.straffordcap.org](http://www.straffordcap.org).



### FUEL & ELECTRICAL ASSISTANCE

CAP employees are now taking appointments for fuel and electrical assistance. Last year, we served nearly 3,900 households. Income-eligible households can get help paying their winter heating bills by applying for fuel assistance now through April 30, 2015. Electrical assistance is available year round. We have flexible hours and locations for appointments. Call today at 603-516-8126 or 603-516-8191. Visit [www.straaffordcap.org](http://www.straaffordcap.org)



### DONATIONS NEEDED FOR FOOD PANTRIES

We are seeking donations of non-perishable food items, grocery store gift cards and financial donations to help stock our food pantries in Dover, Farmington and Milton. Supplies are critically low yet demand remains very high. To donate, visit [www.straaffordcap.org/donate](http://www.straaffordcap.org/donate) today! Our food pantries serve individuals and families from all over Strafford County.

\*\*\*\*\*



\*\*\*\*\*

To receive the E-CRIER via email EVERY WEEK go to [www.leenh.org](http://www.leenh.org), click on Subscribe to E-Alerts and follow the directions to subscribe. It's that easy!

\*\*\*\*\*