

# TOWN OF LEE, NEW HAMPSHIRE

7 Mast Road  
Lee, New Hampshire 03861  
(603) 659-5414  
January 30, 2015

## BLIZZARD OF 2015



**FILING PERIOD for MARCH 10, 2015 ELECTION  
ENDS TODAY @ TOWN CLERK'S OFFICE UNTIL 5PM**

Any Lee resident who is a registered voter may apply for the following positions to be placed on the ballot:

**Selectman: one for 3 years**

**Supervisor of the Checklist: one for 1 year**

**Trustee of the Trust Fund: one for 1 year; one for 3 years**

**Library Trustee: one for 3 years**

**Cemetery Trustee: one for 3 years**

**Advisory Budget Committee: two for 3 years; one for 2 years; one for 1 year**

\*\*\*\*\*

**TOWN OF LEE DELIBERATIVE SESSION**

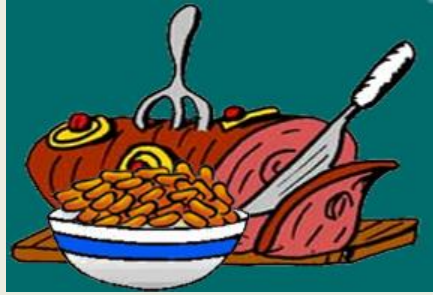
**JANUARY 31, 2015 9:00 AM**

**MAST WAY SCHOOL**

**[CLICK HERE](#) for 2015 TOWN WARRANT**

**[CLICK HERE](#) for FY16 PROPOSED BUDGET**

\*\*\*\*\*



### HAM & BEANS CHURCH SUPPER

Saturday, January 31<sup>ST</sup> 5:00 – 7:00 pm  
Lee Church Congregational

Come in from the cold, join our warm & welcoming group of dinner visitors and enjoy a delicious “home-cooked” meal. Menu includes Ham & Baked Beans, pickled beets, coleslaw, applesauce, rolls & butter, gingerbread with topping and beverages. For more information call 659-2861.

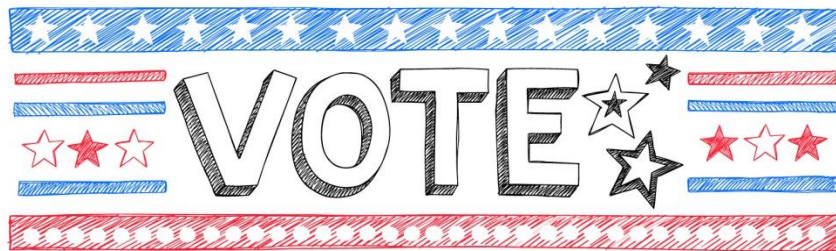
\*\*\*\*\*



### BACKYARD FARMING INITIATIVE SERIES 2015 PRESENTS FIVE NIGHTS, 10 FARMS: EXPLORE YOUR FARMING DREAMS

**NEXT DISCUSSION Monday, February 23<sup>rd</sup> 7:00 pm**  
Jeremiah Smith Grange Hall, Lee Hook Road, Lee  
[CLICK HERE](#) for schedule

\*\*\*\*\*



### TOWN OF LEE BALLOT SESSION MARCH 10, 2015 7:00 AM – 7:00 PM PUBLIC SAFETY COMPLEX

\*\*\*\*\*



**LEE HISTORICAL SOCIETY is seeking a  
VOLUNTEER TREASURER to start by  
APRIL 10, 2015**

This position is responsible for all banking, filing State and Federal tax forms, maintaining membership lists and reporting to the Board of Directors. The Lee Historical Society is a 501c3 and a NH Charitable Corporation. This year's Annual Meeting is on April 10, 2105. Interested applicants may reach out to Phyllis White, Historical Society Secretary, at [PhyllisWhite@comcast.net](mailto:PhyllisWhite@comcast.net) or call Lee Town Hall, 7 Mast Road, Lee, NH 03861.

\*\*\*\*\*

**GOVERNOR & EXECUTIVE COUNCIL MEETING  
MINUTES FROM JANUARY 28<sup>TH</sup>**

[CLICK HERE](#) for the minutes

Next Governor & Executive Council Meeting  
Wednesday, February 11, 2015 at 10:00 am in the Executive  
Council Chamber at the State House Concord, NH

\*\*\*\*\*

**KEEP YOUR EYE OPEN FOR A LIST OF OPENINGS  
FOR COMMITTEE AND COMMISSION MEMBERS  
WITHIN THE NEXT MONTH**

**It's a great way to be involved and  
contribute to your community.**

[CLICK HERE](#) for an application & deliver to the Town Hall

\*\*\*\*\*



**NH'S NEW HANDS FREE ELECTRONIC DEVICE  
LAW **EFFECTIVE JULY 1, 2015**  
WHAT DOES THIS MEAN? [CLICK HERE](#)**

The Lee Police and Lee Fire Associations are working with the members of the 250<sup>th</sup> Anniversary Planning Committee to purchase commemorative license plates to be used during 2016. There is a contest for the best design for the Lee 250<sup>th</sup> license plate. The winning license plate will be chosen by the 250<sup>th</sup> Anniversary Planning Committee. The rules for the design are that the design has to be done freehand without any shadowing. We are looking for a design that is representative of the town's history. [CLICK HERE](#) to view the design that the Town of Fremont used for their 250<sup>th</sup> commemorative plate. Please submit your entries to the Police Department by **February 27, 2015**. Email entries accepted at [restee@leenhpolice.org](mailto:restee@leenhpolice.org). Good luck!

\*\*\*\*\*

**BE CAREFUL WHERE YOU PUT THAT SNOW!**



**TOWN ORDINANCE : SNOW CASTING**

This ordinance reads in part "Be it hereby ordained that NO PERSON shall throw or allow to be thrown, cast, placed or deposited any snow or ice into or upon the plowed portion of any street, sidewalk or public way in the Town of Lee, it being the intent and purpose of this ordinance to prohibit all persons from throwing, casting, placing or depositing snow and ice in such manner as to become a hazard to vehicular or pedestrian traffic." The fine for this violation can be up to \$100.00 (one hundred dollars).

\*\*\*\*\*

**SENIOR ADVISORY COMMITTEE**

The committee last met on January 9<sup>th</sup> and Senior Housing in Lee was one topic of discussion. If you would like to share your opinion about senior housing for yourself in our community please contact Nancy at [NancyAliceR@cs.com](mailto:NancyAliceR@cs.com). We do need feedback from community members who would like to remain in Lee when they choose to downsize.

Join us at our next meeting on February 9<sup>th</sup>, 9:00am at the Lee Safety Complex.

SAC and the Lee Library sponsor the Knitting Gathering held twice monthly on Wednesdays from 9am - 11am at the library: February dates are the 4<sup>th</sup> & 18<sup>th</sup>. SAC and LCC sponsor the Family Nature Walks held at 9:30am on the 1<sup>st</sup> Saturday of the month, weather permitting. The walks are led by Catherine Fisher, member LLC.





White pine with holes excavated by a pileated woodpecker searching for carpenter ants.

**FAMILY NATURE WALK AT LEE TOWN FOREST  
SATURDAY, FEBRUARY 7<sup>TH</sup>, 9:30 a.m.**

This week's nor'easter has transformed the forest, and everything wears a deep coat of powdery snow. The going is tough if you're a denizen of the forest, and whether you're a carnivore or an herbivore, it's a real challenge finding a meal in an environment buried under two feet of snow. As we walk the Yellow Rectangle Trail, we'll talk about the survival strategies of species that remain active during our New Hampshire winters, and we'll pause to look at some frozen avians, including a pileated woodpecker and a barred owl. We'll meet behind the backstop of the baseball field adjacent to Mast Way School. All ages welcome! Monthly family Nature Walks are sponsored by the Lee Conservation Commission and the Senior Advisory Committee.

\*\*\*\*\*

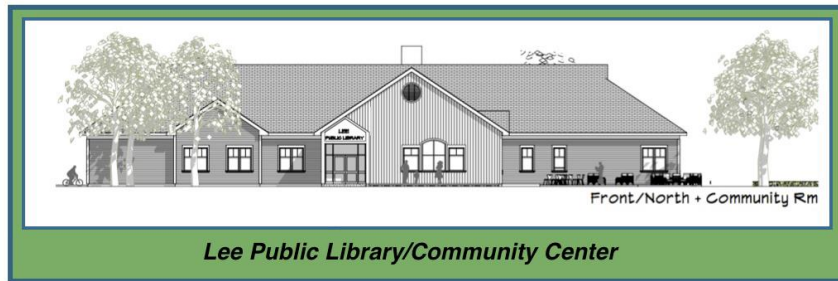


**READY RIDES NEEDS DRIVERS from LEE!**

READY RIDES offer free rides to medical appointment for residents 55+ and those who are disabled and unable to drive. They serve Lee, Barrington, Durham, Madbury, Newmarket, Northwood, Nottingham and Strafford. Drivers receive 25 cents per mile and can pick what rides they want to do. Drivers must be at least 25 years old, have a valid driver's license and a favorable driving record with a legally registered, inspected and insured vehicle. You will need to complete a volunteer application that includes a motor vehicle and criminal background check. Please call Meri Schmalz at 224-8719 or email [info@readyrides.org](mailto:info@readyrides.org) for information about how to help your neighbor.

\*\*\*\*\*

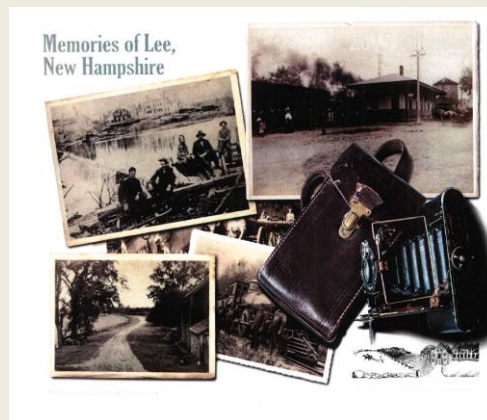
## LIBRARY TRUSTEES' CORNER



Please attend the Deliberative Session on Saturday, January 31<sup>st</sup> starting at 9:00am at the Mast Way School! Two of the warrant articles that will be discussed (#7 and #9) have to do with the new Library Community Center. There will be a presentation about this very important project. In 2016, Lee will celebrate its 250th anniversary. The opening of the Lee Public Library Community Center will be a wonderful way to mark this anniversary and address a critical need in our town. The time is right to move forward in a fiscally responsible way as Lee looks forward to the next 250 years. *Working together, Lee can build it!*

\*\*\*\*\*

### ON SALE AT TOWN HALL! 2015 MEMORIES OF LEE, NH CALENDAR



CREATED BY THE LEE HERITAGE COMMISSION IN  
COLLABORATION WITH THE LEE HISTORICAL SOCIETY

\*\*\*\*\*

**STILL ON SALE AT TOWN HALL!**  
**The Early Mills and Industry of Lee, NH**  
**Compiled and researched by Randy Stevens and**  
**Susan Wellington**  
**Proceeds to benefit the Heritage Commission**

\*\*\*\*\*

# WANTED

## HISTORIC PHOTOS OF LEE

[CLICK HERE](#) for more information



### DOES ANYONE KNOW WHO THIS IS?

Please email [heritage@leenh.org](mailto:heritage@leenh.org) or call Town Hall at 659-5414.

\*\*\*\*\*

## TOWN OF LEE NOW OFFERS ONLINE SERVICES



for car registration renewals, dog licenses, vital records and property taxes. To access the new online services, please visit the Town of Lee's website at [www.leenh.org](http://www.leenh.org). Credit/debit cards and ACH payments (bank-to-bank transfers) will be accepted for all online transactions. Credit/debit card and internet processing fees will apply.



The Town Clerk/Tax Collector's office now accepts MasterCard, Visa, American Express, and Discover credit cards; debit cards that display these logos are also accepted. **Please note:** There are additional fees to cover the cost of using a credit or debit card - 2.95% of the total transaction with \$1.50 minimum. These convenience fees go directly to the Town of Lee's third party credit/debit card processor and are not retained by the Town of Lee. Convenience fees cannot be refunded. Cash and checks are still accepted forms of payment and do not require additional fees.



## LEE PUBLIC LIBRARY

You like us at the library, now like us on Facebook!



### LIBRARY REGULAR HOURS

Monday, Tuesday, Wednesday: 12:00 – 8:00 pm

Thursday, Friday: 10:00 am – 5:00 pm

Saturday: 10:00 am – 3:00 pm

**“Creating Connections: Building Community Through the Arts”**

This is the 4th in a series of workshops on a variety of art techniques

Rescheduled from January 27<sup>th</sup>



### BEGINNING QUILTING

Tuesday, February 17<sup>TH</sup> 6:00 pm

If you have been dreaming about learning to quilt then this workshop is for you. Katrina Rhodes, owner of the Fabric Garden quilt shop in Barrington will be teaching this workshop for people new to quilting. She will cover the basics, tools and how to use them, and then guide participants in sewing a small project to help with understanding the techniques being taught. A project kit will be provided for this workshop. **Participants should have basic sewing skills and will need to bring a sewing machine to the class. A supply list will be provided at time of registration. Limited to 6 ages 15 and up. Please register by calling 659-2626.**



### BUILD WITH LEGOS

Saturday, January 31<sup>st</sup> 10:30 am – Noon

Join us as Gordon Lubbers, owner of Bricks 4 Kidz, leads a fun morning of building with motorized Lego models. Kids can choose model kits and plans from 2 different themes - the NASA inspired Space Adventures and the Ticket to Ride amusement park rides. This program encourages curiosity and creativity and is for children in grades 1-5. **Please register by calling 659-2626.**





### ADULT BOOK DISCUSSION

Monday, February 9<sup>th</sup> 7:00 pm

“Where’d You Go Bernadette” by Maria Semple. “Semple pieces together a modern-day comic caper full of heart and ingenuity....a compelling composite of a woman's life-and the way she's viewed by the many people who share it...."*Publisher's Weekly (Starred Review)*

Copies of the book are available at the library. All are welcome to participate.



### LADYBUG VALENTINE TIC TAC TOE

Drop-In Craft

Saturday, February 14<sup>th</sup>

Create a ladybug tic-tac-toe game. Then use foam hearts to fill in squares.

### ON - GOING PROGRAMS



Thursday & Friday at 10:30 am

These fun 30 - 40 minute programs include stories, songs, finger plays, flannel board and a craft. Registration is not required.



### NO FOOLIN, JUST FUN - ADULT GAME DAY

Tuesdays at 9:30 am

Come join the fun, make new friends and learn some new games. All are welcome! Open to all adults 18 and older.



### STORY TREKKERS

Tuesdays 3:30 – 4:30 pm Ages 6-10

Read a variety of authors and award-winning books. Snack, games and a craft included. Most way students ride bus 23. **Please register. This program is currently filled and has a waiting list.**



### KNITTING GET TOGETHER

Tuesdays, 6:30 - 8:00 pm

Come and join other knitters for an evening of knitting and socializing. Bring that project you've been meaning to finish and make some new friends. Sorry, there are no instructors.



### KNITTING FOR 50+

**ALTERNATE WEDNESDAYS, NEXT FEBRUARY 4<sup>TH</sup> 9AM**

A drop-in group will meet at the library. Help is available from instructor, Donna Kay. All levels welcome. **Offered by the Senior Advisory Committee in conjunction with the Lee Library.**



### ROCKIN' READERS BOOK CLUB

Thursdays 3:00 – 4:00 pm

5<sup>th</sup> & 6<sup>th</sup> Graders

Read/discuss a different book per month. Take bus 21. **Please register.**

## THE LIBRARY HAS THE FOLLOWING MUSEUM PASSES!

Boston Children's Museum  
Boston Museum of Science  
Currier Museum of Art  
Museum of Fine Arts Boston  
Mariposa Museum & World Culture Center in Peterborough, NH

Strawbery Banke  
Children's Museum of NH  
Isabella Stewart Gardner Museum  
Seacoast Science Center

Check out their websites to see what is happening and then get a pass from the library that offers free or reduced admission.



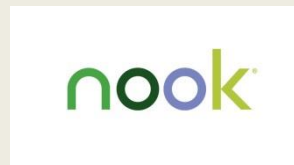
### MARIPOSA MUSEUM AND WORLD CULTURE CENTER Peterborough, NH

Thanks to the generosity of the Friends of the Lee Public Library, we now have a membership to the Mariposa Museum and World Culture Center. The pass admits 2 adults & 2 children for free. Check out their website [www.mariposamuseum.org](http://www.mariposamuseum.org).



### CURRIER MUSEUM OF ART Manchester, NH

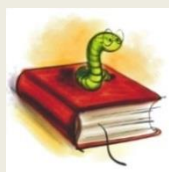
Our pass to the Currier courtesy of the Friends of the Lee Public Library, admits up to 2 adults for free. Children under 18 are also free. Upcoming exhibits include, Still Life: 1970's Photorealism, Audubon's Wild Animals of North America, Witness to History: James Nachtwey Photography, and Killer Heels: The Art of the High Heeled Shoe. Check out their website for all their programs: [www.currier.org](http://www.currier.org).



**Did you know** the library has a Kindle and a Nook available for checkout? Great opportunity to explore whether or not you like reading on an electronic device!

## BOOKWORM DIGEST

Sign up for the Bookworm Digest: A monthly newsletter all about everything going on at Lee Public Library. Send an email to [leelibrary@comcast.net](mailto:leelibrary@comcast.net) to get the Bookworm Digest sent once a month.



Please visit the following link to view all the library's programs: [leenh.org/pages/LeeNH\\_LibraryCal/?formid=158](http://leenh.org/pages/LeeNH_LibraryCal/?formid=158)



## FRIENDS OF THE LEE LIBRARY

The Friends of Lee Library is a non-profit organization that supports Lee Library activities through memberships and fundraising. Activities include museum passes, children's vacation and summer programs, and adult educational programs. Thanks to your funding, the Friends of Lee Library will continue to support the wonderful activities! Not a member yet? It's easy - [CLICK HERE](#) !

## LAMPREY HEALTH CARE SENIOR TRANSPORTATION PROGRAM

Lamprey Health Care's Senior Transportation program provides rides to essential services for individuals over the age of 60 and/or with disabilities. Our handicap-accessible buses take seniors and adults with disabilities to the grocery store, pharmacy, doctor, or bank! For reservations or more information call 1-800-582-7214 or 659-2424 Monday through Friday, 8:00am - 4:00pm or go to [lampreyhealth.org/index.php/patient-services/transportation\\_program](http://lampreyhealth.org/index.php/patient-services/transportation_program)



## JOIN THE LEE FIRE RESCUE DEPT.

**The Department is always looking for new members!**

Please stop by the Safety Complex Monday - Friday 8:00 am to 4:00 pm or during one of our training meetings, held on the 2nd and 4th Thursday of each month at 7:00 pm.



## EMERGENCY NOTIFICATION SYSTEM

The Town of Lee Police, Fire & Emergency Management utilizes the emergency notification system **CODE RED**. Visit [leenh.org](http://leenh.org) to sign up!



### CHANNEL 13

Check your local TV channel 13 to view Selectmen’s meetings aired daily at 7:00 am; 2:00 pm; 7:00 pm. [CLICK HERE](#) for more details on Channel 13. [CLICK HERE](#) to view town meetings and videos online through the media site at leenh.org.

Sun	Mon	Tue	Wed	Thu	Fri	Sat
				1	2	3
4	5	6	7	8	9	10
11	12	13	14	15	16	17
18	19	20	21	22	23	24
25	26	27	28	29	30	

### MEETING CALENDAR

To view the meeting calendar on leenh.org [CLICK HERE](#)



### DISPOSAL OF PRESCRIPTION DRUGS

A drop-off box is available at the Public Safety Complex for unused and unwanted prescriptions.

### STRAFFORD COUNTY CITIZEN CORPS HEALTH & SAFETY COUNCIL OF STRAFFORD COUNTY

Click on the “Sr” web page link for more information about Influenza. [dhhs.nh.gov/dphs/cdcs/influenza/index.htm](http://dhhs.nh.gov/dphs/cdcs/influenza/index.htm)





# FOOD PANTRY

## WILKINSON FOOD PANTRY Lee Church Congregational 17 Mast Rd

The food pantry is open to any family in the Town of Lee. The pantry is open the first and third Monday of each month from 6 - 7:00 pm. If there is an emergency please call the Church office at 659-2861. All visits to the pantry are strictly confidential.



**Community Action Partnership  
Pregnant? New Baby? CAP Can Help!**

If you are pregnant, know someone who is, or just had a baby, Community Action can help. We have a free Home Visiting program for teens and women age 25 and under. Call CAP's Home Visiting at 603-516-8108 to learn more or visit [www.straaffordcap.org](http://www.straaffordcap.org).



## FUEL & ELECTRICAL ASSISTANCE

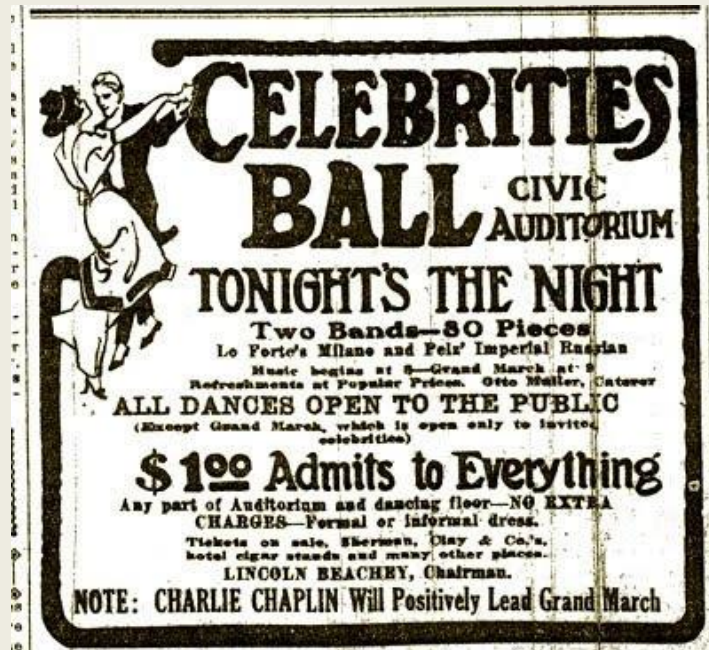
CAP employees are now taking appointments for fuel and electrical assistance. Last year, we served nearly 3,900 households. Income-eligible households can get help paying their winter heating bills by applying for fuel assistance now through April 30, 2015. Electrical assistance is available year round. We have flexible hours and locations for appointments. Call today at 603-516-8126 or 603-516-8191. Visit [www.straaffordcap.org](http://www.straaffordcap.org)



### DONATIONS NEEDED FOR FOOD PANTRIES

We are seeking donations of non-perishable food items, grocery store gift cards and financial donations to help stock our food pantries in Dover, Farmington and Milton. Supplies are critically low yet demand remains very high. To donate, visit [www.traffordcap.org/donate](http://www.traffordcap.org/donate) today! Our food pantries serve individuals and families from all over Strafford County.

\*\*\*\*\*



JANUARY 30, 1915

On this night, on January 30, 1915, Charlie Chaplin and Edna Purviance lead the Grand March at the Celebrities Ball held at the Civic Auditorium in San Francisco.

\*\*\*\*\*

To receive the E-CRIER via email EVERY WEEK go to [www.leenh.org](http://www.leenh.org), click on Subscribe to E-Alerts and follow the directions to subscribe. It's that easy!

\*\*\*\*\*