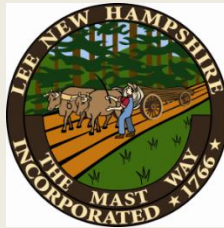


# TOWN OF LEE, NEW HAMPSHIRE

7 Mast Road  
Lee, New Hampshire 03861  
(603) 659-5414

January 29, 2016



## TOWN DELIBERATIVE SESSION

Saturday, January 30<sup>TH</sup> 9:00 am – Completion  
Mast Way School, 23 Mast Road, Lee, NH  
Snow Date Saturday, February 6<sup>th</sup>

[CLICK HERE](#) for WARRANT & [CLICK HERE](#) FY17 BUDGET



LICENSE PLATES WILL BE SOLD AT THE DELIBERATIVE SESSION!  
ANY NH REGISTERED VEHICLE MAY DISPLAY THIS PLATE.  
YOU **DO NOT** HAVE TO BE A LEE RESIDENT.  
JUST \$20 TO SHOW YOUR SUPPORT EVERYWHERE YOU GO!

\*\*\*\*\*

FILING PERIOD FOR TOWN OFFICERS  
**ENDS TODAY – JANUARY 29<sup>TH</sup>** AT 5:00PM AT THE  
TOWN CLERK'S OFFICE

\*\*\*\*\*

**SUPERVISORS OF THE CHECKLIST NOTICE**  
SUPERVISORS OF THE CHECKLIST WILL BE AT THE TOWN  
DELIBERATIVE SESSION AT THE MAST WAY SCHOOL ON  
SATURDAY, JANUARY 30<sup>TH</sup> FROM 9:00 AM – END  
**NOTE:** IF SESSION ENDS BEFORE 11:30AM THEN THE  
SUPERVISORS WILL MOVE TO THE LIBRARY TO CONTINUE THEIR  
SESSION UNTIL 11:30AM

These sessions will be held for corrections and registrations. No  
change in party registration will be accepted, due to the  
Presidential Primary on February 9, 2016.



### **POWDER MAJOR FARM AND FOREST**

A remarkable property in Lee, Madbury and Durham is planned for protection by the Society for the Protection of NH Forests. Working with the three towns, the Forest Society is planning to purchase and conserve 195 acres of forest lands as a new Forest Society Reservation and further to protect an abutting 32 acres of farmland with a conservation easement. The Powder Major property has an extensive trail system for a wide variety of public recreation activities. Conservation will also protect the Oyster River, a drinking water source for UNH and Durham, which travels for more than  $\frac{3}{4}$  of a mile through the property. There are also a variety of important wildlife habitats and historical features. The Town is proposing to help the project by acquiring a conservation easement on the 46 acres in Lee. Although the purchase will cost \$150,000, the money will come from existing conservation funds, so no new taxes will be required. The Select Board and the Conservation Commission have unanimously endorsed this project.

\*\*\*\*\*

### **SAU BALLOT CLERK OPENING**

The SAU Office is looking for a resident of the Town of Lee to serve as a Ballot Clerk at their February 3, 2016 Deliberative Session. The meeting is being held at the Oyster River High School in the Auditorium at 7:00 pm. If you need additional information or are interested in serving as a Ballot Clerk, please contact Wendy at the SAU Office at 389-3286 or [wdifruscio@orcsd.org](mailto:wdifruscio@orcsd.org).

\*\*\*\*\*



**PRESIDENTIAL PRIMARY**

**FEBRUARY 9, 2016**

**DON'T FORGET TO VOTE!!**

\*\*\*\*\*

**IMPORTANT OYSTER RIVER COOPERATIVE  
SCHOOL DISTRICT DATES TO REMEMBER**

January 20<sup>th</sup>–29<sup>th</sup> til 5 pm Filing Period for School District Openings

February 3<sup>rd</sup> Annual Meeting Session I – Deliberative

February 16<sup>th</sup> Candidate’s Night

March 8<sup>th</sup> Annual Meeting Session II – Voting Day

Durham, Oyster River High School, 7am-7pm

Lee, Public Safety Complex, 7am-7pm

Madbury, Madbury Town Hall, 11am-7:30pm

**FOR MORE INFORMATION GO TO [WWW.ORCSO.ORG](http://WWW.ORCSO.ORG)**

\*\*\*\*\*

**[CLICK HERE FOR ORCSO](#)**

**PROPOSED 2016-17 BUDGET UPDATE**

\*\*\*\*\*

**NEW DATE & LOCATION FOR THE 250<sup>TH</sup>**

**KICK OFF CELEBRATION**

**Saturday, February 13<sup>th</sup> 1:00 – 3:00 Mast Way School**

**SNOW DATE TBA**

**CHECK OUT THE PASSPORT TO LEE PROGRAM [CLICK HERE](#)**

**LICENSE PLATES ON SALE AT THE PD & THE LIBRARY FOR \$20!**

**ANY NH REGISTERED VEHICLE MAY DISPLAY THIS PLATE.**

**YOU **DO NOT** HAVE TO BE A LEE RESIDENT.**



**250<sup>th</sup> COMMEMORATIVE MEMORABILIA ON SALE AT THE LIBRARY**

\*\*\*\*\*

2015  
International  
Year of Soils



**HEALTHY SOIL, HEALTHY  
LEE: BUILDING SOIL HEALTH**

**Every 4<sup>th</sup> Monday, January thru May 2016**

**7:00 – 8:30 pm with ‘soil’ related desserts**

**Jeremiah Smith Grange, Lee Hook Road, Lee, NH**

**February 22, 2016 – Soil Fertility: the birds and bees – Eric Sideman, Organic Crop Specialist, MOGFA**

**March 28, 2016 – Causes of soil degradation – Kim McCracken, State Soil Scientist, NRCS, USDA**

**April 25, 2016 – Repairing soil – Dorn Cox, Director of Green Start; Daimon Meeh, Field Specialist, UNH**

**May 23, 2016 – Healthy Soil, Healthy Lee – Steve Haendler, Drumlin Farm; John Hutton, Coppal House Farm**

Sponsored by the Backyard Farming Initiative of the Lee Agricultural Commission and the Lee Public Library. [CLICK HERE](#) for more details

## FIRE DEPARTMENT UPDATE

Inside the January 2016 issue of the [Safety Educator Newsletter](#) readers will find the following topics: New Year for Home Fire Safety Awareness, Home Fire Sprinklers, Pet Safety, Fire Safety for Older Adults and Wood/Pellet Stove Safety

The January 2016 [One Stop Educator Newsletter](#) supports and provides fire and life safety educators with teaching information and links discussed from this month's edition of the Safety Educator Newsletter.

Finally, the January 2016 [In the News Newsletter](#) will provide Fire & Life Safety Educators with information that may assist them in educating their community and to provide educational and networking opportunities.

## BURN PERMIT

[CLICK HERE](#) for BURN PERMIT CHECKLIST

[CLICK HERE](#) for ONLINE FIRE PERMIT PRESS RELEASE

GO TO [www.nhfirepermit.com](http://www.nhfirepermit.com) to obtain a fire permit online.

[CLICK HERE](#) for CodeRED Brochure

\*\*\*\*\*

## POLICE UPDATES

### THE LEE PD IS LOOKING FOR A HIGHLY SELF-MOTIVATED PROFESSIONAL TO JOIN OUR AGENCY AS A POLICE OFFICER

The Lee Police Department is currently hiring for the position of Police Officer. Applicants must be at least 21 years of age, possess a high school diploma or equivalent and have a valid driver's license. Applicants must also be able to pass the NH Police Standards and Training physical agility requirements, a polygraph examination, extensive background check and a psychological examination. The position requires shift work including nights, weekends and holidays. Please send your resume with a cover letter to the Lee Police Department, 20 George Bennett Road, Lee, NH 03861 or via email: [mail@leenhpolice.org](mailto:mail@leenhpolice.org). Resumes are to be received no later than Friday, February 12, 2016 at 3:00pm. Salary dependent on qualifications. The Town of Lee is an equal opportunity employer.



## SCAM ALERTS

what to know and do about scams in the news

The Lee Police Department has received several calls about a telephone scam. Scammers are calling advising they are from the IRS and that they will be arresting people due to non-payment of taxes. These are scam calls. Please do not provide any personal or banking information to anyone with whom you did not initiate the call.

To receive scam alerts, please check out: <http://www.consumer.ftc.gov/scam-alerts>. Don't become a victim.

**OPEN POSITIONS ON TOWN COMMITTEES AND/OR COMMISSIONS LISTED BELOW**

**RECREATION COMMISSION, SENIOR ADVISORY COMMITTEE  
LAMPREY RIVER ADVISORY COMMITTEE, ENERGY COMMITTEE**

[CLICK HERE](#) for Application.

Hand deliver to Town Hall or email application to the  
Town Secretary at [dduval@leenh.org](mailto:dduval@leenh.org)

\*\*\*\*\*

**SAND & WATER AVAILABLE for RESIDENTS**

The Fire Station has a 24 hour water fill station on the east side of the building. There is sand available for residents at the Highway Garage and the Transfer Station.

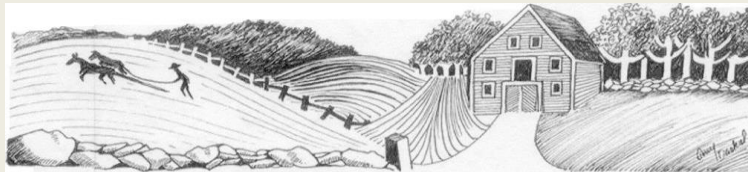
\*\*\*\*\*



**CONSERVE YOUR LAND**

Like the Lee Conservation Commission on Facebook at [page](#) or go to:  
[www.facebook.com/LeeConservationCommission/](http://www.facebook.com/LeeConservationCommission/)

\*\*\*\*\*



**LEE HERITAGE COMMISSION**

**LIKE US ON FACEBOOK and SHARE WITH YOUR FRIENDS!**

**“Don’t Take Any Wooden Nickels!” ...**

**Unless you’re buying one as a Lee souvenir for the 250<sup>th</sup>!**

**Here’s some “wooden nickel” trivia for you.**

The phrase became very popular during the Great Depression, but its roots go back farther in American history. Going back to the turn of 20th Century America, the phrase was used as a warning for those from the country headed into the city for any number of reasons. It was meant as a humorous warning about city slickers and their fancy ways so country folk wouldn’t get scammed and conned out of their money and goods. The warning not to accept “*wooden*” items has been in existence since the mid-1800s in America. Back then, some peddlers were known to mix wooden nutmeg and wooden cucumber seeds in with the real nutmeg and cucumber seeds. So it’s easy to see why honest folk needed to heed the warning. So while the phrase “*don’t take any wooden nickels*” is a turn of the 20th Century phrase, the concept pre-dates the phrase by at least another 50 years.

(Source: <https://idiomation.wordpress.com/2011/01/04/dont-take-any-wooden-nickels>)

**Lee Heritage Commission – Publications and Price List  
Available at the Lee Town Hall and Library**

Lee in Four Centuries edited by Mrs. Ursula Baier - \$5.00  
Lee, NH by John Scales [reprint, 1916] - 4.00  
Oliver Cromwell Gilbert A Life by Jody Fernald & Stephanie Gilbert - \$10.00  
The Early Mills and Industry of Lee, NH by Richard Wellington with Randy Stevens and Susan Wellington - \$20.00  
The Early Roads and Settlers of Lee, NH by Melvin E. Jenkins - \$15.00  
The History of the Jeremiah Smith Grange by Donna F. Eisenhard - \$20.00  
The Railroad That Passed Through Lee, NH - 1874-1934 by Randy Stevens - \$12.00  
2016 Historic Lee NH Wall Calendar - \$10.00

**BITS of HISTORY from  
The NEWMARKET ADVERTISER  
Saturday, January 18, 1896**

The general business depression has reached the shoe factory, the employes not having much to do—something unusual here at this season.

It is reported that Nathaniel French, an old soldier living on the outskirts of Lee, has fallen heir to \$3,000,000 by the death of a relative in the West.

**SUBMITTED BY THE LEE HERITAGE COMMISSION**

\*\*\*\*\*



**READY RIDES NEEDS DRIVERS from LEE!**

READY RIDES offer free rides to medical appointments for residents 55+ and those who are disabled and unable to drive. They serve Lee, Barrington, Durham, Madbury, Newmarket, Northwood, Nottingham and Strafford. You will need to complete a volunteer application that includes a motor vehicle and criminal background check. Please call Meri Schmalz at 224-8719 or email [info@readyrides.org](mailto:info@readyrides.org) for more details about how to help your neighbor.

\*\*\*\*\*

## Regional & State News & Events

### Events in NH Agriculture



#### Raising Chickens: The Basics

Monday, February 1<sup>st</sup> 6:30pm

**Boscawen Municipal Complex, 116 N Main St 4<sup>th</sup> FL, Boscawen**  
Dot Perkins, UNH Cooperative Extension Livestock Field Specialist, will present information about breeds, housing, and seasonal care of chickens. This talk will not cover butchering or broilers. Come listen to all the facts and many practical tips pertaining to raising chickens for eggs. Sponsored by the Boscawen Agricultural Commission. This is a FREE workshop.

[Register on-line HERE.](#) [Event flyer.](#)

Or contact Mary West at 796-2151 or email: [mary.west@unh.edu](mailto:mary.west@unh.edu)

\*\*\*\*\*



[CLICK HERE](#) for the 2015 - 2040 Metropolitan  
Transportation Plan Survey

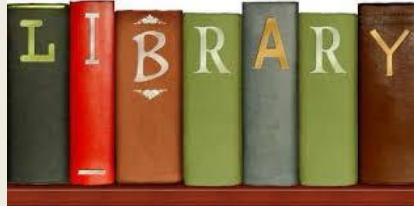
\*\*\*\*\*



[CLICK HERE](#) for the Lamprey Rivers Advisory Committee  
2016 Winter Newsletter

## Lee Public Library

You like us at the library, now like us on Facebook!



**LIBRARY WILL BE CLOSED MONDAY, FEBRUARY 15<sup>TH</sup> IN  
OBSERVANCE OF PRESIDENT'S DAY**

### REGULAR HOURS

Saturday: 10:00 am – 3:00 pm

Monday, Tuesday, Wednesday: 12:00 – 8:00 pm

Thursday, Friday: 10:00 am – 5:00 pm

**\*\*NEW\*\* Online Access to Newmarket Advertiser articles. Go to  
<http://lee.advantage-preservation.com/>**

See articles from 1891-1932. Years 1912-1913 are missing.  
Heritage Commission sponsored.

### Online Access to Town Reports and Early Town Records

Town Records 1766-1815 link from [www.familysearch.org](http://www.familysearch.org)

Town Reports 1863-2007 from UNH's Digital Archive

<http://leelibrarynh.org/index.php/lee-town-reports/>



**250<sup>th</sup> COMMEMORATIVE MEMORABILIA ON SALE AT THE LIBRARY**  
**WOODEN NICKELS, LICENSE PLATES, COFFEE MUGS, TOTES, HATS,**  
**LONG & SHORT SLEEVED T-SHIRTS & ZIP-UP HOODED SWEATSHIRTS**

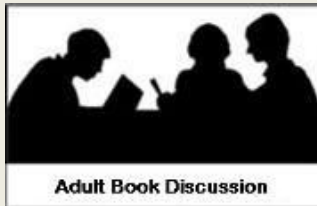
**\*\*\*\*\*Calling all artists/crafts people.** The library is looking for artists and crafts people to display their artwork in the upcoming months at the library. Please call us at 659-2626 if you are interested in gracing our walls with your projects.





## LIBRARY LEGOS

Our first session of Library Legos was so popular that we will be offering another one! Kids in **grades 1-4** can have fun at the library building cool stuff with Legos! This program will run for 10 consecutive Fridays from 3:30-4:30 pm beginning **January 8<sup>TH</sup>** and **ending March 11<sup>TH</sup>**. A building theme will be suggested each week. Registration is not required. Mast Way students may arrange to ride bus 6 directly to the library.



Adult Book Discussion

**ADULT BOOK DISCUSSION  
GROUP**  
**Monday, February 8<sup>TH</sup> 7:00pm**  
**"Kitchen Confidential"**  
**Anthony Bourdain**

Anthony Bourdain captures the world of restaurants and professionally cooked food in all its theatrical, demented glory. (USA Today)



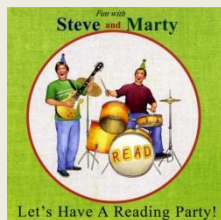
**LOONS IN NH: DOING QUITE  
WELL, THANK YOU!**  
**Tuesday, February 16<sup>th</sup> 7:00 pm**  
**Lee Safety Complex**

This talk will focus on the last 25 years of information about the survival and distribution of the common loon throughout New Hampshire. Maps, generated using GIS (Geographical Information System), will be used to show population growth and spread over time. Data collection methods will be reviewed. Trends in the loon population, loon habitat, nesting habits, hatchling survival and dispersion patterns will be presented. Dr. Congalton's talk will conclude with the current status of loons in New Hampshire.



**Penguin Fun – Drop-In Craft  
Vacation Week February 20<sup>th</sup> – 27<sup>th</sup>**

Some penguins live where it's snowy and cold. Drop by during school vacation week when it's snowy and cold here and make a cute penguin. It will feel right at home in Lee!



**Steve Blunt and Marty Kelley**  
**Thursday, February 25<sup>th</sup> 10:30 am**  
**Durham Public Library**

Join us as musician Steve Blunt and author/illustrator Marty Kelley present a rollicking mix of songs and stories. This show is cosponsored by the Friends of the Lee Public Library and the Durham and Madbury public libraries.

### **ON - GOING PROGRAMS**



**NO FOOLIN, JUST FUN**  
**ADULT GAME DAY**  
**Tuesdays at 9:30 am**

Come join the fun, make new friends and learn some new games. All are welcome! Open to all adults 18 and older.



**KNITTING FOR 50+**  
**ALTERNATE WEDNESDAY,**  
**Feb. 3<sup>rd</sup> & 17<sup>th</sup> 9:00 am**

A drop-in group will meet at the library. Help is available from instructor, Donna Kay. All levels welcome. Offered by the Senior Advisory Committee and the Lee Library.



**KNITTING GET TOGETHER**  
**Tuesdays, 6:30 – 8:00 pm**

Come and join other knitters for an evening of knitting and socializing. Bring that project you've been meaning to finish and make some new friends. Sorry, no instructors.



**Thursdays & Fridays 10:30 am**

These fun 30-40 minute programs for children **ages 2-6** include stories, songs, finger plays, flannel board and a craft. Registration is not required.



**BOOK CLUB**  
**1<sup>ST</sup> Thursday of month 3-4 pm**  
**5 & 6 Graders**

Participants will read and discuss a different book each month. And - pizza will be served! Students may arrange to take **bus 22** directly to the library after school. Please **register** by calling 659-2626.



**STORY TREKKERS**  
**Tuesdays 3:30 – 4:30pm Ages 6-10**

Children will be introduced to a variety of authors and award-winning books. A snack, games and a craft will also be included. Mast Way students may arrange to ride **bus 6** directly to the library after school. Please **register** by calling 659-2626.



This is a new library program that encourages families to read 1000 books with their young children before they enter kindergarten. Just register and keep track of how many books you've read on a reading log. We'll help you celebrate the first 100 books milestone with the gift of a canvas book bag. And at each 100 books mark, you'll get a 100 books sticker. Reach 1000 and you'll receive a copy of Miss Bindergarten Gets Ready for Kindergarten! Registration is ongoing.



**FRIENDS OF THE LEE LIBRARY**

The Friends of Lee Library is a non-profit organization that supports Lee Library activities through memberships and fundraising. Activities include museum passes, children's vacation and summer programs and adult educational programs. Not a member yet? It's easy – [CLICK HERE!](#)

## More About Lee

### LAMPREY HEALTH CARE SENIOR TRANSPORTATION PROGRAM

Lamprey Health Care's Senior Transportation program provides rides to essential services for individuals over the age of 60 and/or with disabilities. Our handicap-accessible buses take seniors and adults with disabilities to the grocery store, pharmacy, doctor or bank! Call 1-800-582-7214 or 659-2424 Monday - Friday, 8am - 4pm or go to [lampreyhealth.org/index.php/patient-services/transportation\\_program](http://lampreyhealth.org/index.php/patient-services/transportation_program)



### JOIN THE LEE FIRE RESCUE DEPT.

Please stop by the Safety Complex Monday - Friday 8am- 4pm.



### EMERGENCY NOTIFICATION SYSTEM

The Town of Lee Police, Fire & Emergency Management utilizes the emergency notification system **CODE RED**. Visit [leenh.org](http://leenh.org) to sign up!

Sun	Mon	Tue	Wed	Thu	Fri	Sat
				1	2	3
4	5	6	7	8	9	10
11	12	13	14	15	16	17
18	19	20	21	22	23	24
25	26	27	28	29	30	

### MEETING CALENDAR

To view the meeting calendar on [leenh.org](http://leenh.org) [CLICK HERE](#)



### DISPOSAL OF PRESCRIPTION DRUGS

A drop-off box is available at the Public Safety Complex for unused and unwanted prescriptions.



# FOOD PANTRY

## WILKINSON FOOD PANTRY

Lee Church Congregational 17 Mast Rd

The food pantry is open to **any family** in the Town of Lee. The pantry is open the first and third Monday of each month from 6 - 7:00 pm. If there is an emergency please call the Church office at 659-2861. All visits to the pantry are strictly confidential.

**To receive the E-CRIER via email EVERY WEEK go to [www.leenh.org](http://www.leenh.org), click on Subscribe to E-Alerts and follow the directions to subscribe. It's that easy!**

### **ATTENTION!**

If you know someone who wants to see the e-crier but does not have the internet please direct them to Town Hall for a printed copy or to the Library to view it there. If they cannot leave their home please call Denise Duval, Town Secretary, at 659-5414 to have it mailed!