

# TOWN OF LEE, NEW HAMPSHIRE

7 Mast Road  
Lee, New Hampshire 03861  
(603) 659-5414  
January 23, 2015

## CHECKLIST MEETING

Saturday, January 24, 2015 11:00 – 11:30 am  
Lee Library



**FILING PERIOD for MARCH 10, 2015 ELECTION**  
**January 21<sup>ST</sup> – 30<sup>TH</sup> @ Town Clerk's Office**

**Monday 8am – 6pm**

**Wednesday & Friday 8am – 4pm**

Any Lee resident who is a registered voter may apply for the following positions to be placed on the ballot:

**Selectman for 3 years**

**Supervisor of the Checklist for 1 year**

**Trustee of the Trust Fund: one for 1 year; one for 3 years**

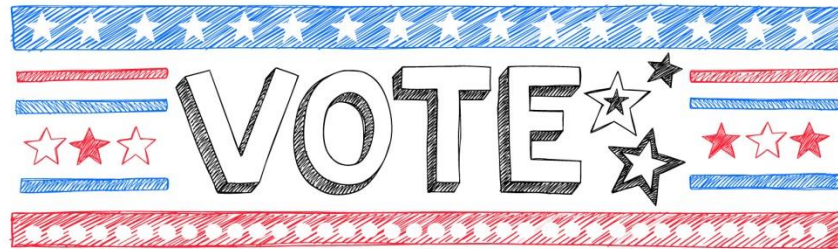
**Library Trustee for 3 years**

**Cemetery Trustee for 3 years**

**Advisory Budget Committee: two for 3 years; one for 1 year; one for 2 years**

\*\*\*\*\*

\*\*\*\*\*  
**TOWN OF LEE DELIBERATIVE SESSION**  
JANUARY 31, 2015 9:00 AM  
MAST WAY SCHOOL  
[CLICK HERE](#) for 2015 TOWN WARRANT  
[CLICK HERE](#) for FY16 PROPOSED BUDGET



\*\*\*\*\*  
**TOWN OF LEE BALLOT SESSION**  
MARCH 10, 2015 7:00 AM – 7:00 PM  
PUBLIC SAFETY COMPLEX



**BACKYARD FARMING INITIATIVE SERIES 2015  
PRESENTS FIVE NIGHTS, 10 FARMS: EXPLORE  
YOUR FARMING DREAMS**

**FIRST DISCUSSION Monday, January 26<sup>th</sup> 7:00 pm**

Jeremiah Smith Grange Hall, Lee Hook Road, Lee

Join us for an evening with the owners of Coppal House Farm (sustainable practices) and Hickory Nut Farm (dairy goat farm) and find out what started their dreams and how they keep them going. Sponsored by the Lee Agricultural Commission & the Lee Library.

[CLICK HERE](#) for schedule

\*\*\*\*\*

## IMPORTANT ORCSD DATES TO REMEMBER

- ◆ **January 14th** - Bond and Budget Public Hearing ~ ORHS Auditorium - 7:00 PM  
Snow Date: January 15th
  - ◆ **Town Meetings for School District Budget Overview**  
January 5th - Lee Selectman Meeting- 6:00 PM - Lee Safety Complex  
January 12th - Durham Town Council Meeting - 7:00 PM - Durham Town Hall  
January 19th - Madbury Selectman Meeting - 7:00 PM - Madbury Town Hall
  - ◆ **January 21st through January 30th until 4:00 PM** - Filing Period for School District Openings  
(No Filing Fee Required) (1 Moderator, 3 School Board Members one each from Durham, Lee and Madbury)
  - ◆ **February 3rd** - Annual Meeting Session I - **Deliberative** ~ ORHS Auditorium 7:00 PM  
Snow Date: February 4th
  - ◆ **February 17th** - Candidates' Night ~ ORHS Location C-124 - 7:00 PM  
Snow Date: February 18th
  - ◆ **March 10th** - Annual Meeting Session II - **Voting Day** ~ Vote in Town of Residence

Durham	Oyster River High School	7:00 AM - 7:00 PM
Lee	Lee Safety Complex	7:00 AM - 7:00 PM
Madbury	Madbury Town Hall	11:00 AM - 7:30 PM

Report of the District February 2015 Edition ~ Available the beginning of February at:  
SAU Office, Town Halls, Libraries, Schools and posted on the ORCSD website.
- If unable to pick up a report - Please contact Wendy @ 389-3286 or via email: wdifruscio@orcscsd.org
- BUDGET INFORMATION CAN BE FOUND ON DISTRICT WEBSITE**  
[www.orcscsd.org](http://www.orcscsd.org) **QUICK LINKS BUDGET FY 15-16**

\*\*\*\*\*

### LEE HISTORICAL SOCIETY is seeking a VOLUNTEER TREASURER to start by APRIL 10, 2015

This position is responsible for all banking, filing State and Federal tax forms, maintaining membership lists and reporting to the Board of Directors. The Lee Historical Society is a 501c3 and a NH Charitable Corporation. This year's Annual Meeting is on April 10, 2105. If you are interested in this very important position, please reach out to Phyllis White, Historical Society Secretary, at [PhyllisWhite@comcast.net](mailto:PhyllisWhite@comcast.net) or call write to Lee Historical Society, Lee Town Hall, 7 Mast Road, Lee, NH 03861.

\*\*\*\*\*

**KEEP YOUR EYE OPEN FOR A LIST OF OPENINGS  
FOR COMMITTEE AND COMMISSION MEMBERS  
WITHIN THE NEXT MONTH.**

**It's a great way to be involved and  
contribute to your community.**

**[CLICK HERE](#) for an application & deliver to the Town Hall**

\*\*\*\*\*

\*\*\*\*\*



The Lee Police and Lee Fire Associations are working with the members of the 250<sup>th</sup> Anniversary Planning Committee to purchase commemorative license plates to be used during 2016. The Director of Motor Vehicles will allow the plates to be made available for purchase and then to be used as the front license plate during 2016. We are anticipating these plates to be on sale near the end of 2015 and continuing through 2016. The cost of the plates will be determined when the design is chosen. So that residents of Lee are involved with this momentous occasion, we are holding a contest for the design of the Lee 250<sup>th</sup> license plate. The winning license plate will be chosen by the 250<sup>th</sup> Anniversary Planning Committee and will become the commemorative license plate for 2016. The rules for the design are that the design has to be done freehand without any shadowing. We are looking for a design that is representative of the town's history. [CLICK HERE](#) to view the design that the Town of Fremont used for their 250<sup>th</sup> commemorative plate.

Please submit your entries to the Police Department by February 27, 2015. Email entries accepted at [restee@leenhpolice.org](mailto:restee@leenhpolice.org). Thank you.

\*\*\*\*\*



**NH'S NEW HANDS FREE ELECTRONIC DEVICE  
LAW EFFECTIVE JULY 1, 2015  
WHAT DOES THIS MEAN? [CLICK HERE](#)**

\*\*\*\*\*

\*\*\*\*\*

## SENIOR ADVISORY COMMITTEE

The committee last met on January 9th and Senior Housing in Lee was one topic of discussion. We need to make a correction to Nancy Ryan's email address from what was listed last week. If you would like to share your opinion about senior housing for yourself in our community please contact Nancy at [NancyAliceR@cs.com](mailto:NancyAliceR@cs.com). We do need feedback from community members who would like to remain in Lee when they choose to downsize. There are many choices to make when considering housing and it would be most helpful to hear from you now.

Our next meeting is on February 9<sup>th</sup>, 9:00 AM, Lee Safety Complex if you care to join us.

SAC and the Lee Library sponsor the Knitting Gathering held twice monthly on Wednesdays from 9am - 11am at the library: February dates are the 4th & 18th. SAC and LCC sponsor the Family Nature Walks held at 9:30am on the 1st Saturday of the month, weather permitting. The walks are led by Catherine Fisher, member LLC.

\*\*\*\*\*

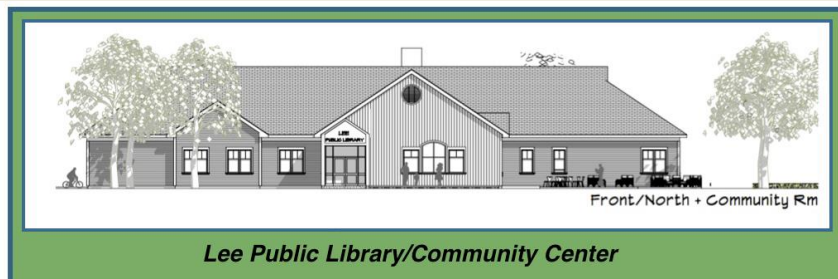


## READY RIDES NEEDS DRIVERS from LEE!

READY RIDES offer free rides to medical appointment for residents 55+ and those who are disabled and unable to drive. They serve Lee, Barrington, Durham, Madbury, Newmarket, Northwood, Nottingham and Strafford. Drivers receive 25 cents per mile and can pick what rides they want to do. Drivers must be at least 25 years old, have a valid driver's license and a favorable driving record with a legally registered, inspected and insured vehicle. You will need to complete a volunteer application that includes a motor vehicle and criminal background check. Please call Meri Schmalz at 224-8719 or email [info@readyrides.org](mailto:info@readyrides.org) for information about how to help your neighbor.

\*\*\*\*\*

## LIBRARY TRUSTEES' CORNER



### ***Find out how much your family can save just by using the Lee Public Library!***

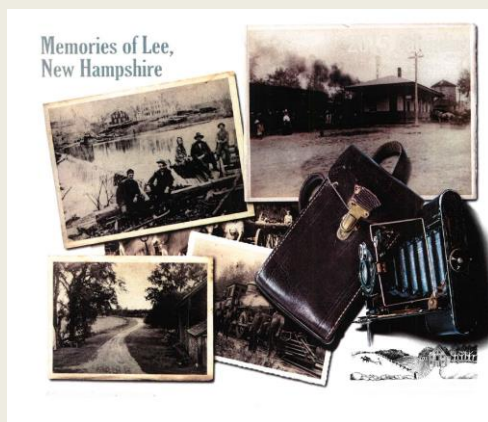
How much is the Lee Library saving your family? Use the Library use calculator to find out how much you would have to pay for the library materials and services you use if you had to purchase them. Go to [http://www.ala.org/advocacy/advleg/advocacyuniversity/toolkit/makingthecase/library\\_calculator](http://www.ala.org/advocacy/advleg/advocacyuniversity/toolkit/makingthecase/library_calculator)

he library offers more than books, DVDs and magazines. Library patrons have access to Ancestry Library and EBSCOHOST, a collection of 15 online databases covering general interest, business and health resources and much more.

*Working together, Lee can build it!*

\*\*\*\*\*

### **ON SALE AT TOWN HALL! 2015 MEMORIES OF LEE, NH CALENDAR**



CREATED BY THE LEE HERITAGE COMMISSION IN  
COLLABORATION WITH THE LEE HISTORICAL SOCIETY

\*\*\*\*\*

## **WANTED**

**HISTORIC PHOTOS OF LEE**  
[CLICK HERE](#) for more information

\*\*\*\*\*

\*\*\*\*\*

**STILL ON SALE AT TOWN HALL!**  
**The Early Mills and Industry of Lee, NH**  
**Compiled and researched by Randy Stevens and**  
**Susan Wellington**  
**Proceeds to benefit the Heritage Commission**

\*\*\*\*\*

**TOWN OF LEE NOW OFFERS ONLINE SERVICES**



for car registration renewals, dog licenses, vital records and property taxes. To access the new online services, please visit the Town of Lee's website at [www.leenh.org](http://www.leenh.org). Credit/debit cards and ACH payments (bank-to-bank transfers) will be accepted for all online transactions. Credit/debit card and internet processing fees will apply.



The Town Clerk/Tax Collector's office now accepts MasterCard, Visa, American Express, and Discover credit cards; debit cards that display these logos are also accepted. **Please note:** There are additional fees to cover the cost of using a credit or debit card - 2.95% of the total transaction with \$1.50 minimum. These convenience fees go directly to the Town of Lee's third party credit/debit card processor and are not retained by the Town of Lee. Convenience fees cannot be refunded. Cash and checks are still accepted forms of payment and do not require additional fees.



**LEE PUBLIC LIBRARY**

You like us at the library, now like us on Facebook!



**LIBRARY REGULAR HOURS**

Monday, Tuesday, Wednesday: 12:00 – 8:00 pm  
Thursday, Friday: 10:00 am – 5:00 pm  
Saturday: 10:00 am – 3:00 pm



### NOVICE KNITTERS

**Thursday, January 22<sup>nd</sup> & 29<sup>th</sup> 3:00 – 4:15 pm Grades 5-8**

Shirley Walker and Patricia Jenkins will be teaching basic knitting skills to create a scarf, a wrister or fingerless mittens. Students may ride bus 21 from the school to the library. Needles will be supplied for all projects. Yarn will be supplied for the bookmarks, but students must purchase yarn for the remaining projects. Please register.

**“Creating Connections: Building Community Through the Arts”**  
This is the 4th in a series of workshops on a variety of art techniques



### BEGINNING QUILTING

**Tuesday, January 27<sup>TH</sup> 6:00 pm**

If you have been dreaming about learning to quilt then this workshop is for you. Katrina Rhodes, owner of the Fabric Garden quilt shop in Barrington will be teaching this workshop for people new to quilting. She will cover the basics, tools and how to use them, and then guide participants in sewing a small project to help with understanding the techniques being taught. A project kit will be provided for this workshop. Participants should have basic sewing skills and will need to bring a sewing machine to the class. A supply list will be provided at time of registration. Limited to 6 ages 15 and up. **Please register by calling 659-2626.**



### BUILD WITH LEGOS

**Saturday, January 31<sup>st</sup> 10:30 am – Noon**

Join us as Gordon Lubbers, owner of Bricks 4 Kidz, leads a fun morning of building with motorized Lego models. Kids can choose model kits and plans from 2 different themes - the NASA inspired Space Adventures and the Ticket to Ride amusement park rides. This program encourages curiosity and creativity and is for children in grades 1-5. **Please register by calling 659-2626.**





### ADULT BOOK DISCUSSION

Monday, February 9<sup>th</sup> 7:00 pm

“Where’d You Go Bernadette” by Maria Semple. “Semple pieces together a modern-day comic caper full of heart and ingenuity....a compelling composite of a woman's life-and the way she's viewed by the many people who share it...."*Publisher's Weekly (Starred Review)*

Copies of the book are available at the library. All are welcome to participate.



### LADYBUG VALENTINE TIC TAC TOE

Drop-In Craft

Saturday, February 14<sup>th</sup>

Create a ladybug tic-tac-toe game. Then use foam hearts to fill in squares.

### ON - GOING PROGRAMS



Thursday & Friday at 10:30 am

These fun 30 - 40 minute programs include stories, songs, finger plays, flannel board and a craft. Registration is not required.



### NO FOOLIN, JUST FUN - ADULT GAME DAY

Tuesdays at 9:30 am

Come join the fun, make new friends and learn some new games. All are welcome! Open to all adults 18 and older.



### STORY TREKKERS

Tuesdays 3:30 – 4:30 pm Ages 6-10

Read a variety of authors and award-winning books. Snack, games and a craft included. Most way students ride bus 23. **Please register. This program is currently filled and has a waiting list.**



### KNITTING GET TOGETHER

Tuesdays, 6:30 - 8:00 pm

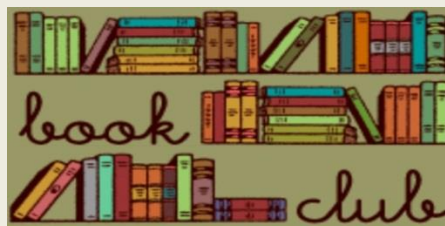
Come and join other knitters for an evening of knitting and socializing. Bring that project you've been meaning to finish and make some new friends. Sorry, there are no instructors.



### KNITTING FOR 50+

ALTERNATE WEDNESDAYS, NEXT FEBRUARY 4<sup>TH</sup> 9AM

A drop-in group will meet at the library. Help is available from instructor, Donna Kay. All levels welcome. **Offered by the Senior Advisory Committee in conjunction with the Lee Library.**



### ROCKIN' READERS BOOK CLUB

Thursdays 3:00 – 4:00 pm

5<sup>th</sup> & 6<sup>th</sup> Graders

Read/discuss a different book per month. Take bus 21. **Please register.**

## THE LIBRARY HAS THE FOLLOWING MUSEUM PASSES!

Boston Children's Museum  
Boston Museum of Science  
Currier Museum of Art  
Museum of Fine Arts Boston  
Mariposa Museum & World Culture Center in Peterborough, NH  
Strawbery Banke  
Children's Museum of NH  
Isabella Stewart Gardner Museum  
Seacoast Science Center

Check out their websites to see what is happening and then get a pass from the library that offers free or reduced admission.



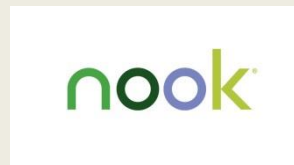
### MARIPOSA MUSEUM AND WORLD CULTURE CENTER Peterborough, NH

Thanks to the generosity of the Friends of the Lee Public Library, we now have a membership to the Mariposa Museum and World Culture Center. The pass admits 2 adults & 2 children for free. Check out their website [www.mariposamuseum.org](http://www.mariposamuseum.org).



### CURRIER MUSEUM OF ART Manchester, NH

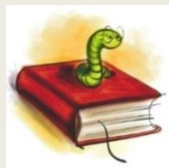
Our pass to the Currier courtesy of the Friends of the Lee Public Library, admits up to 2 adults for free. Children under 18 are also free. Upcoming exhibits include, Still Life: 1970's Photorealism, Audubon's Wild Animals of North America, Witness to History: James Nachtwey Photography, and Killer Heels: The Art of the High Heeled Shoe. Check out their website for all their programs: [www.currier.org](http://www.currier.org).



**Did you know** the library has a Kindle and a Nook available for checkout? Great opportunity to explore whether or not you like reading on an electronic device!

## BOOKWORM DIGEST

Sign up for the Bookworm Digest: A monthly newsletter all about everything going on at Lee Public Library. Send an email to [leelibrary@comcast.net](mailto:leelibrary@comcast.net) to get the Bookworm Digest sent once a month.



Please visit the following link to view all the library's programs: [leenh.org/pages/LeeNH\\_LibraryCal/?formid=158](http://leenh.org/pages/LeeNH_LibraryCal/?formid=158)



## FRIENDS OF THE LEE LIBRARY

The Friends of Lee Library is a non-profit organization that supports Lee Library activities through memberships and fundraising. Activities include museum passes, children's vacation and summer programs, and adult educational programs. Thanks to your funding, the Friends of Lee Library will continue to support the wonderful activities! Not a member yet? It's easy - [CLICK HERE](#) !

## LAMPREY HEALTH CARE SENIOR TRANSPORTATION PROGRAM

Lamprey Health Care's Senior Transportation program provides rides to essential services for individuals over the age of 60 and/or with disabilities. Our handicap-accessible buses take seniors and adults with disabilities to the grocery store, pharmacy, doctor, or bank! For reservations or more information call 1-800-582-7214 or 659-2424 Monday through Friday, 8:00am - 4:00pm or go to [lampreyhealth.org/index.php/patient-services/transportation\\_program](http://lampreyhealth.org/index.php/patient-services/transportation_program)



## JOIN THE LEE FIRE RESCUE DEPT.

**The Department is always looking for new members!**  
Please stop by the Safety Complex Monday - Friday 8:00 am to 4:00 pm or during one of our training meetings, held on the 2nd and 4th Thursday of each month at 7:00 pm.



### EMERGENCY NOTIFICATION SYSTEM

The Town of Lee Police, Fire & Emergency Management utilizes the emergency notification system **CODE RED**. Visit [leenh.org](http://leenh.org) to sign up!



### CHANNEL 13

Check your local TV channel 13 to view Selectmen’s meetings aired daily at 7:00 am; 2:00 pm; 7:00 pm. [CLICK HERE](#) for more details on Channel 13. [CLICK HERE](#) to view town meetings and videos online through the media site at leenh.org.

Sun	Mon	Tue	Wed	Thu	Fri	Sat
				1	2	3
4	5	6	7	8	9	10
11	12	13	14	15	16	17
18	19	20	21	22	23	24
25	26	27	28	29	30	

### MEETING CALENDAR

To view the meeting calendar on leenh.org [CLICK HERE](#)



### DISPOSAL OF PRESCRIPTION DRUGS

A drop-off box is available at the Public Safety Complex for unused and unwanted prescriptions.

### STRAFFORD COUNTY CITIZEN CORPS HEALTH & SAFETY COUNCIL OF STRAFFORD COUNTY

Click on the “Sr” web page link for more information about Influenza. [dhhs.nh.gov/dphs/cdcs/influenza/index.htm](http://dhhs.nh.gov/dphs/cdcs/influenza/index.htm)



# FOOD PANTRY

## WILKINSON FOOD PANTRY

Lee Church Congregational 17 Mast Rd

The food pantry is open to any family in the Town of Lee. The pantry is open the first and third Monday of each month from 6 - 7:00 pm. If there is an emergency please call the Church office at 659-2861. All visits to the pantry are strictly confidential.



**Community Action Partnership**  
**Pregnant? New Baby? CAP Can Help!**

If you are pregnant, know someone who is, or just had a baby, Community Action can help. We have a free Home Visiting program for teens and women age 25 and under. Call CAP's Home Visiting at 603-516-8108 to learn more or visit [www.straffordcap.org](http://www.straffordcap.org).



## FUEL & ELECTRICAL ASSISTANCE

CAP employees are now taking appointments for fuel and electrical assistance. Last year, we served nearly 3,900 households. Income-eligible households can get help paying their winter heating bills by applying for fuel assistance now through April 30, 2015. Electrical assistance is available year round. We have flexible hours and locations for appointments. Call today at 603-516-8126 or 603-516-8191. Visit [www.straffordcap.org](http://www.straffordcap.org)



### DONATIONS NEEDED FOR FOOD PANTRIES

We are seeking donations of non-perishable food items, grocery store gift cards and financial donations to help stock our food pantries in Dover, Farmington and Milton. Supplies are critically low yet demand remains very high. To donate, visit [www.straaffordcap.org/donate](http://www.straaffordcap.org/donate) today! Our food pantries serve individuals and families from all over Strafford County.

\*\*\*\*\*



### JANUARY 22, 1901

The death of **Queen Victoria** on January 22, 1901, ends an era in which most of her British subjects know no other monarch. Her 63 year reign, the longest in British History saw the growth of an empire on which the sun never set. Victoria restored dignity to the English monarchy and ensured its survival as a ceremonial political institution.

\*\*\*\*\*

To receive the E-CRIER via email EVERY WEEK go to [www.leenh.org](http://www.leenh.org), click on Subscribe to E-Alerts and follow the directions to subscribe. It's that easy!

\*\*\*\*\*