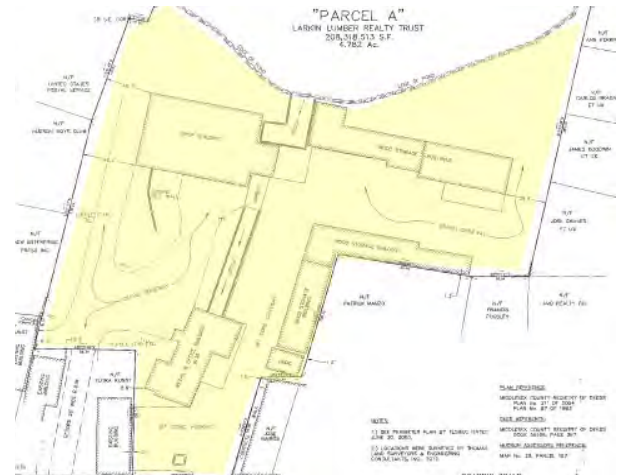


# 136 MAIN STREET HUDSON, MASSACHUSETTS

FOR MORE INFORMATION VISIT: [WWW.136MAINST.COM](http://WWW.136MAINST.COM)



## SPECIFICATIONS

- Total Available: 37,550 SF
- Land: 4.78 Acres
- 2013 Taxes: \$36,096.66
- Building 1 - 3,810 SF of Commercial/Retail
- Building 2 - 12,940 SF of Warehouse
- Building 3 - 11,000 SF of Warehouse
- Building 4 - 7,900 SF of Warehouse
- Building 5 - 1,900 SF of Office

## FOR MORE INFORMATION CONTACT:

Joel Aho, Vice President  
Investment Sales  
Office: (508) 481-8200 x124  
Cell: (508) 868-0216  
[joel@obriencommercial.com](mailto:joel@obriencommercial.com)

# 508.481.8200

All information regarding this property is from source deemed reliable. We make no warranty or representation to the accuracy thereof and the same is submitted subject to errors, omissions, change of price, rental or other conditions, prior sale or lease and withdrawal without notice. You should independently verify all information.

5 MOUNT ROYAL AVE, MARLBOROUGH, MA



[WWW.OBRIENCOMMERCIAL.COM](http://WWW.OBRIENCOMMERCIAL.COM)

# 136 MAIN STREET HUDSON, MASSACHUSETTS

## BUILDING 1

Building Size: 3,810 SF of Commercial/Retail



# 508.481.8200

All information regarding this property is from source deemed reliable. We make no warranty or representation to the accuracy thereof and the same is submitted subject to errors, omissions, change of price, rental or other conditions, prior sale or lease and withdrawal without notice. You should independently verify all information.

5 MOUNT ROYAL AVE, MARLBOROUGH, MA

COMMERCIAL  
**O'BRIEN**  
PROPERTIES, INC

WWW.OBRIENCOMMERCIAL.COM

# 136 MAIN STREET HUDSON, MASSACHUSETTS

## BUILDING 2

**Building Size:** 12,940 SF Warehouse/Production

**Stories:** 2 Floors

**Ceiling Height:** 12' on the first floor  
13'-24'7" on the second floor

**Column Spacing:** 23' x 24'

**Sprinklers:** Wet

**Loading Docks:** 6



# 508.481.8200

All information regarding this property is from source deemed reliable. We make no warranty or representation to the accuracy thereof and the same is submitted subject to errors, omissions, change of price, rental or other conditions, prior sale or lease and withdrawal without notice. You should independently verify all information.

5 MOUNT ROYAL AVE, MARLBOROUGH, MA

COMMERCIAL  
**O'BRIEN**  
PROPERTIES, INC

[WWW.OBRIENCOMMERCIAL.COM](http://WWW.OBRIENCOMMERCIAL.COM)

# 136 MAIN STREET HUDSON, MASSACHUSETTS

## BUILDING 3

**Building Size:** 11,000 SF Warehouse

**Stories:** 2

**Ceiling Height:** 11'1" on the first floor

10'6" on the second floor

**Drive In Doors:** 9



# 508.481.8200

All information regarding this property is from source deemed reliable. We make no warranty or representation to the accuracy thereof and the same is submitted subject to errors, omissions, change of price, rental or other conditions, prior sale or lease and withdrawal without notice. You should independently verify all information.

5 MOUNT ROYAL AVE, MARLBOROUGH, MA

COMMERCIAL  
**O'BRIEN**  
PROPERTIES, INC

WWW.OBRIENCOMMERCIAL.COM

# 136 MAIN STREET HUDSON, MASSACHUSETTS

## BUILDING 4

**Building Size:** 7,926 SF of Warehouse & Covered Storage

**Stories:** 2 Story Section: 4,368 SF

Covered Storage: 3,558 SF



## BUILDING 5

**Building Size:** 1,900 SF of Office



# 508.481.8200

All information regarding this property is from source deemed reliable. We make no warranty or representation to the accuracy thereof and the same is submitted subject to errors, omissions, change of price, rental or other conditions, prior sale or lease and withdrawal without notice. You should independently verify all information.

5 MOUNT ROYAL AVE, MARLBOROUGH, MA

COMMERCIAL  
**O'BRIEN**  
PROPERTIES, INC

[WWW.OBRIENCOMMERCIAL.COM](http://WWW.OBRIENCOMMERCIAL.COM)