

SOUTH ELEVATION
SCALE: 1/4" = 1'-0"

ALTERATIONS TO
555 WARBURTON AVENUE
HASTINGS-ON-HUDSON, NY 10706

CHRISTINA GRIFFIN ARCHITECT PC
10 Spring Street
Hastings-on-Hudson, New York, 10706
914.478.0799 tel 914.478.0806 fax
www.christinagriffinarchitect.com

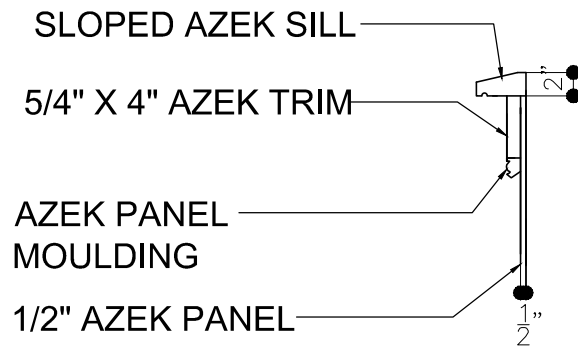
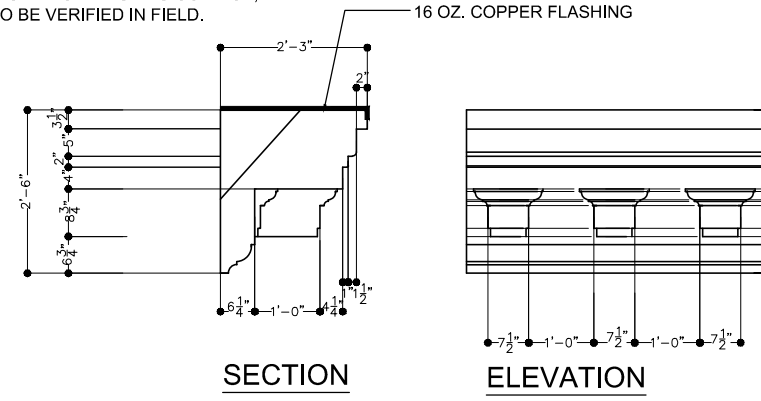
P. ANTHONY SARUBBI
CONSULTING ENGINEER
100 Stevens Avenue
Mount Vernon, NY 10550
914.664.6577 tel 914.668.7502 fax

Date: PLANNING BOARD APPROVAL 1.4.10
ARB APPROVAL 1.4.10
BUILDING PERMIT SUB. 2.3.11
AMENDED BLDG. PER. SUB. 6.13
AMENDED ARB. SUBMISSION 9.2.15.

Drawing Title: EAST ELEVATION
Scale: AS SHOWN

A-2

NEW OR REPLACED PORTIONS OF CORNICE TO BE CAST GLASS FIBER REINFORCED CONCRETE BY STROMBERG, WITH PAINTED FINISH. SIZE AND PROFILE TO MATCH EXISTING CORNICE, DIMENSIONS TO BE VERIFIED IN FIELD.



EXTERIOR CORNICE DETAIL

SCALE: 3/4" = 1'-0"

TYPICAL PANEL DETAIL

SCALE: 3/4" = 1'-0"

ALL NEW WINDOWS AND GLASS DOORS HAVE EXTRUDED ALUMINUM CLAD EXTERIOR, NATURAL WOOD WITH STAINED FINISH AT INTERIOR



EAST ELEVATION

SCALE: 1/4" = 1'-0"

ALTERATIONS TO
555 WARBURTON AVENUE
 HASTINGS-ON-HUDSON, NY 10706

CHRISTINA GRIFFIN ARCHITECT PC

10 Spring Street
 Hastings-on-Hudson, New York, 10706
 914.478.0799 tel 914.478.0806 fax
 www.christinagriffinarchitect.com

P. ANTHONY SARUBBI
 CONSULTING ENGINEER

100 Stevens Avenue
 Mount Vernon, NY 10550
 914.664.6677 tel 914.668.7502 fax

Date: PLANNING BOARD APPROVAL 1.4.10
 ARB APPROVAL 1.4.10
 BUILDING PERMIT SUB 2.3.11
 AMENDED BLDG PER SUB 6.6.13
 AMENDED ARB SUBMISSION 9.21.15

Drawing Title:
 EAST ELEVATION

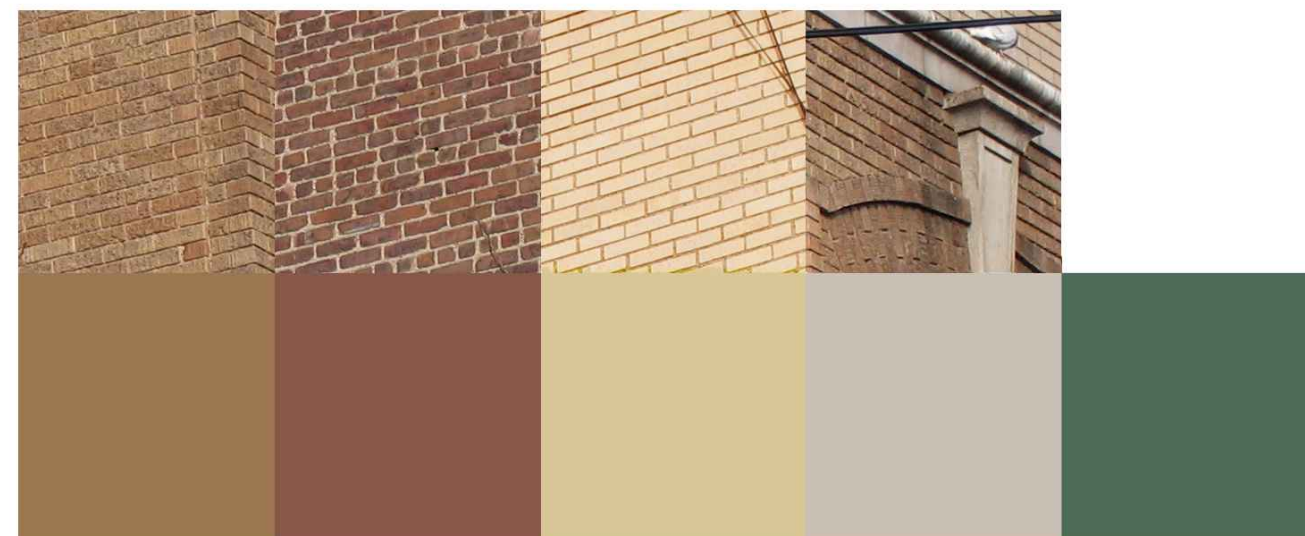
Scale:
 AS SHOWN

A-1



COLOR SCHEME

SCALE: N.T.S.



BROWN BRICK

RED BRICK

YELLOW BRICK

LIMESTONE

WINDOWS, CORNICE,
DOORS & PANELS
PANTONE #553C

ALTERATIONS TO
555 WARBURTON AVENUE
HASTINGS-ON-HUDSON, NY 10706

CHRISTINA GRIFFIN ARCHITECT PC
10 Spring Street
Hastings-on-Hudson, New York, 10706
914.478.0799 tel 914.478.0806 fax
www.christinagriffinarchitect.com

P. ANTHONY SARUBBI
CONSULTING ENGINEER
100 Stevens Avenue
Mount Vernon, NY 10550
914.664.6677 tel 914.668.7502 fax

Date: _____
PLANNING BOARD APPROVAL 1.4.10
ARB APPROVAL 1.4.10
BUILDING PERMIT SUB 2.3.11
AMENDED BLDG PER SUB 6.6.13
AMENDED ARB SUBMISSION 9.21.15
Drawing Title: COLOR SCHEME
Scale: AS SHOWN

A-3



555 WARBURTON AVENUE

SCALE: N.T.S.



555 WARBURTON AVENUE & ADJOINING PROPERTIES

SCALE: N.T.S.

ALTERATIONS TO
555 WARBURTON AVENUE
 HASTINGS-ON-HUDSON, NY 10706

CHRISTINA GRIFFIN ARCHITECT PC
 10 Spring Street
 Hastings-on-Hudson, New York, 10706
 914.478.0799 tel 914.478.0806 fax
 www.christinagriffinarchitect.com

P. ANTHONY SARUBBI
 CONSULTING ENGINEER
 100 Stevens Avenue
 Mount Vernon, NY 10550
 914.664.6677 tel 914.668.7502 fax

Drawing Title: PHOTOS OF 555 WARBURTON AVENUE & ADJOINING PROPERTIES
 Scale: AS SHOWN
 Date: PLANNING BOARD APPROVAL 1.4.10
 ARB APPROVAL 1.4.10
 BUILDING PERMIT SUB 2.3.11
 AMENDED BLDG PER SUB 6.6.13
 AMENDED ARB SUBMISSION 9.21.15

A-4