



ADDENDUM NO. 2

Date: April 11, 2014

Project: Crawl Space and Mechanical System Improvements
Falmouth Town Hall
Falmouth, Maine

This addendum is issued prior to receipt of the bids and does hereby become a part of the contract documents, and in case of conflict, it shall supersede original project manual and drawings.

Each bidder shall be responsible for issuing information contained herein to sub-contractors and suppliers to ensure that his/her proposal covers all work required by the contract documents including this addendum.

Each bidder shall acknowledge receipt of this addendum on the proposal form where indicated.

NOTICE

The following shall serve as notice to General Contractors and Subcontractors that the due date listed within Specification Section 001113 "Advertisement for Bids" has been extended as follows:

Bids will be due on **Tuesday, April 22, 2014, at 12:00 PM (noon)**.

GENERAL

The Town is willing to vacate portions of the work area to facilitate construction, within the following parameters:

- a. Access to the stair and elevator shall be maintained at all times.
- b. Staff will relocate not more than once in two phases for not more than 6 weeks at a time. Refer to SK-A1 (attached).
- c. Total disruption shall not exceed 12 weeks duration.

The Town will handle staff relocation (furniture, computers, etc.).

DRAWINGS

Drawing MH101, Crawl Space and First Floor Mechanical Plans, Detail 2:

- a. Install wall mounted programmable thermostat for HVAC-1 in Council Chambers 119, adjacent to the door to Storage 120.
- b. Install wall mounted programmable thermostat for HVAC-6 in General Office 106, adjacent to the door to Office 108.

Drawing MH102, Second Floor and Attic Mechanical Ductwork Plans, Detail 1:

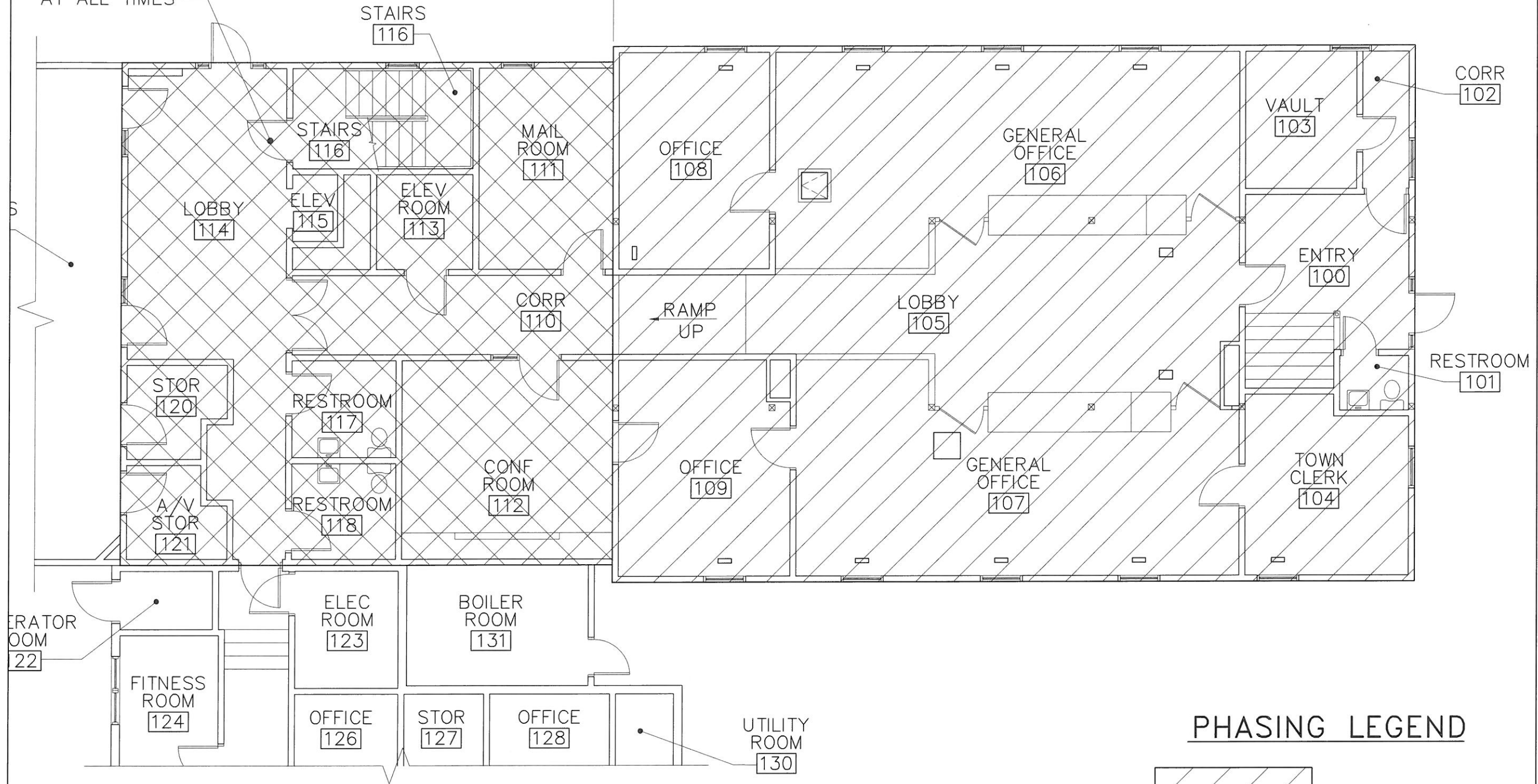
- a. Install wall mounted programmable thermostat for HVAC-2 in Conference Room 220.
- b. Install wall mounted programmable thermostat for HVAC-3 in Secretary 229.
- c. Install wall mounted programmable thermostat for HVAC-4 in Office 207.
- d. Install wall mounted programmable thermostat for HVAC-5 in Office 207.

END OF ADDENDUM No. 2

MAINTAIN ACCESS TO STAIR AND ELEVATOR AT ALL TIMES

PHASE 2

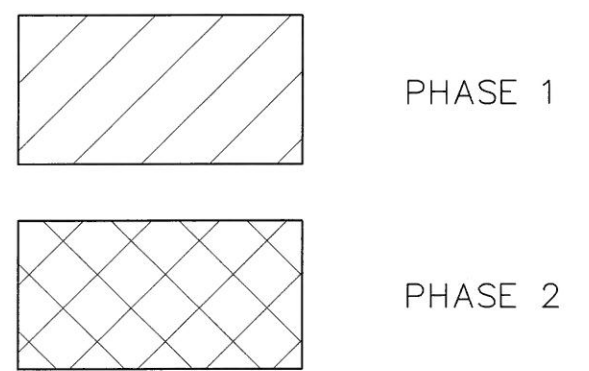
PHASE 1



1 PARTIAL FIRST FLOOR PHASING PLAN
 SK-A1 SCALE: 1/8"=1'-0"



PHASING LEGEND



OAK POINT ASSOCIATES

ARCHITECTURE ■ ENGINEERING ■ PLANNING
 231 Main Street, Biddeford, Maine 04005 (T) 207.283.0193 (F) 207.283.4283
 www.oakpoint.com

DESIGNED BY: GLH
 DRAWN BY: CRR
 CHECKED BY: GLH
 PROJECT: 21404.02

CRAWL SPACE AND MECHANICAL IMPROVEMENTS
Town of Falmouth
Falmouth Town Hall
 271 Falmouth Rd. - Falmouth, Maine

PHASING PLAN

SCALE: AS NOTED
 DATE: 4-11-2014
 REV: **SK-A1**
CLARIFICATION SKETCH