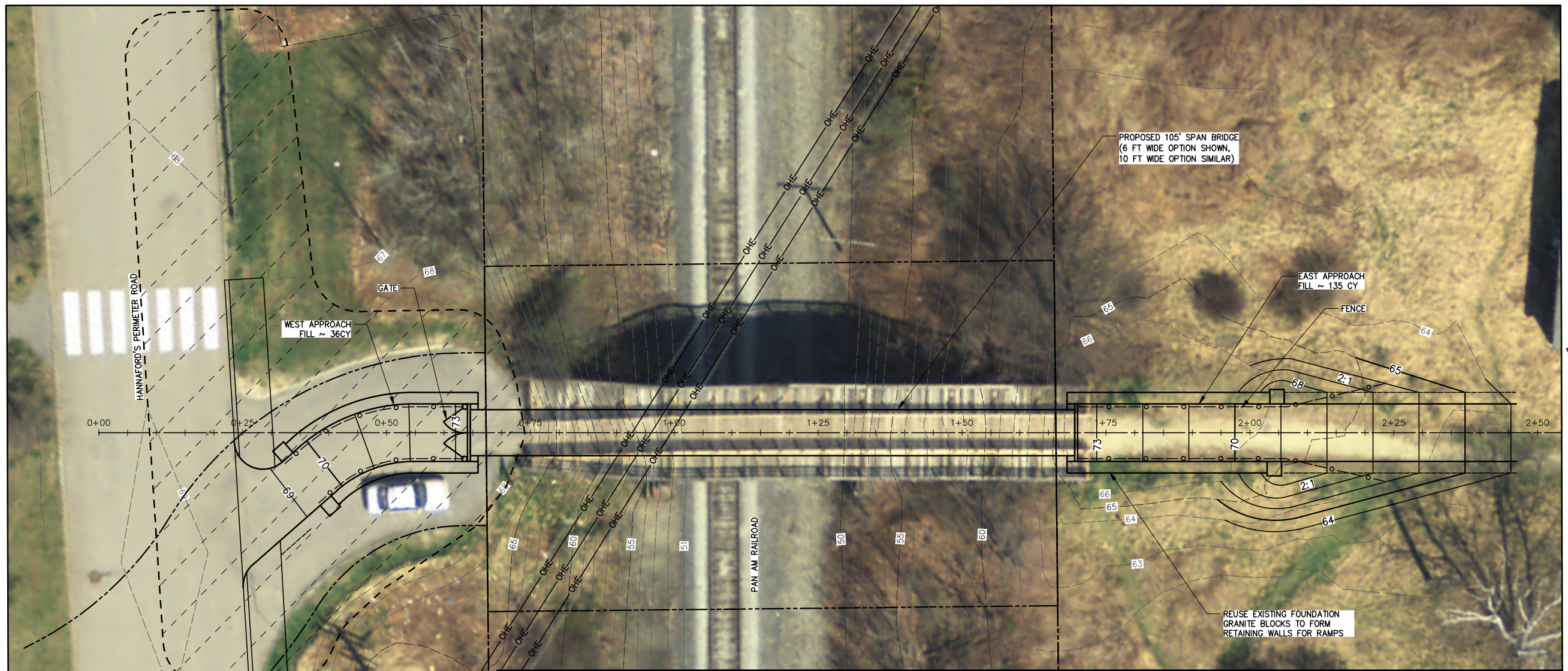
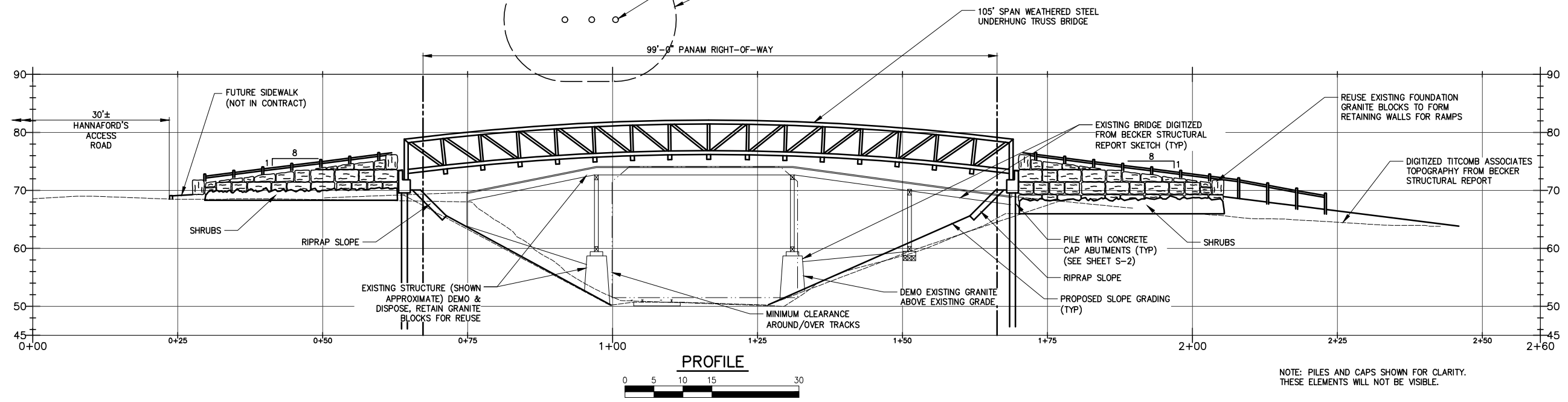
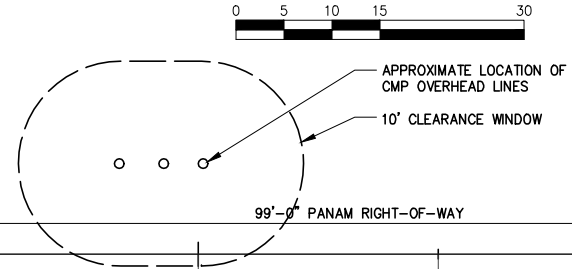


\\ds413\projects\14-09 river point bridge, falmouth\cod\14-09 river point bridge civil (steel truss option).dwg



PLAN (PEDESTRIAN BRIDGE SHOWN, VEHICULAR BRIDGE SIMILAR)



Maritime
Construction and Engineering, LLC

BAKER DESIGN CONSULTANTS
Civil, Marine, and Structural Engineering
7 Spruce Road • Freeport • Maine • 04032 • 207-866-9724 • info@bakdesignconsultants.com

DESIGNED BY:	DJB
DRAWN BY:	JJC
CHECKED BY:	BUB
SCALE:	AS SHOWN
NO.	DATE
A	04/03/14
B	4-13-14
BUB	BUB
PROPOSAL	INT.
WEATHERING STEEL TRUSS OPTION	

SHEET TITLE:		PLAN & PROFILE	
PROJECT:		TOWN OF FALMOUTH CLIFFORD'S BRIDGE DESIGN/BUILD FALMOUTH, MAINE	
DATE:	MARCH 2014	SHEET NO.:	C-2
CONTRACT NO.:	14-09	REV.:	B