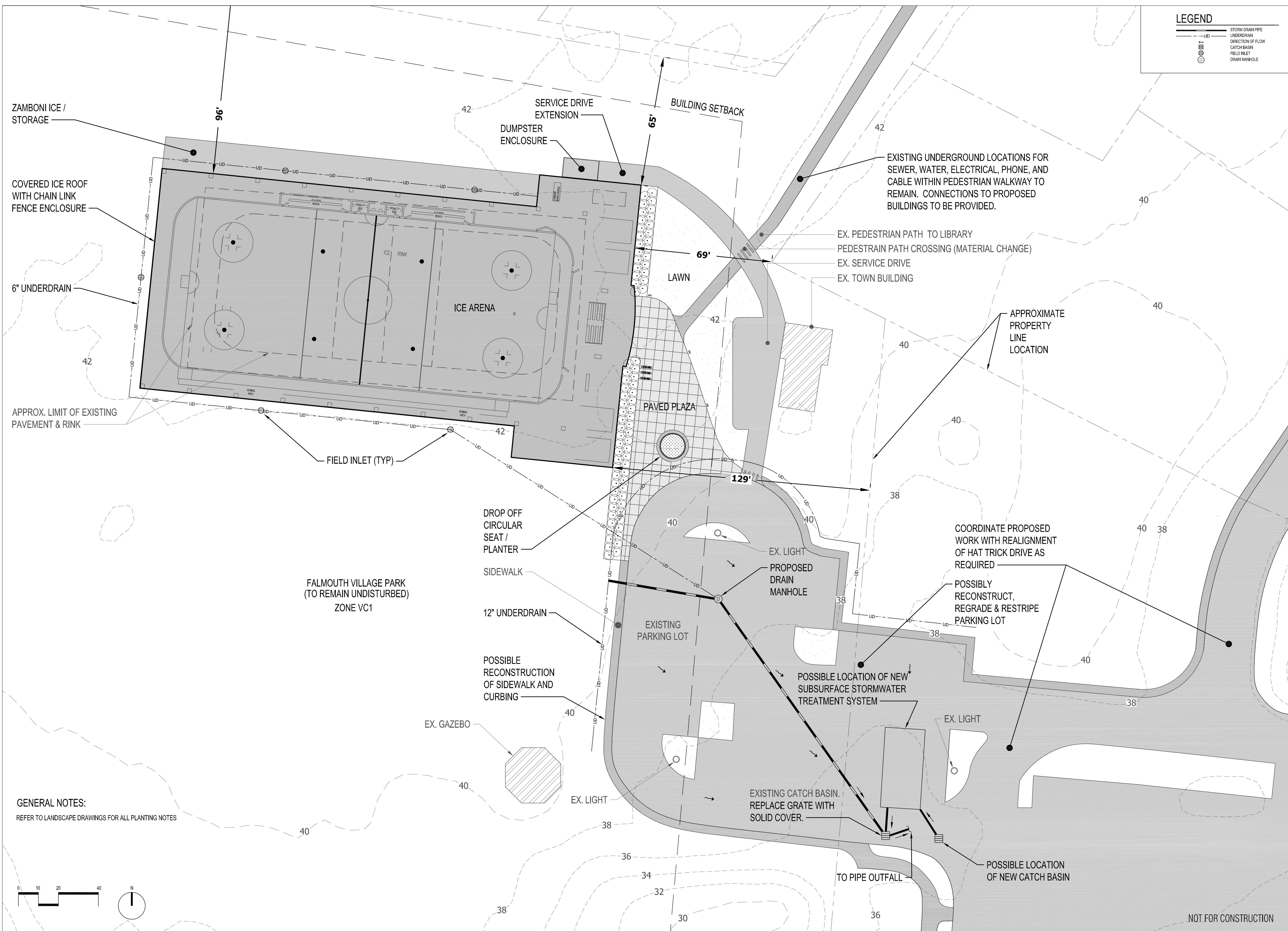


LEGEND

- UD — STORM DRAIN PIPE
- UD — UNDERDRAIN
- UD — DIRECTION OF FLOW
- CATCH BASIN
- FIELD INLET
- DRAIN MANHOLE

CASCO BAY HOCKEY ASSOCIATION
RINK PROJECT
FALMOUTH, MAINE



ZAMBONI ICE / STORAGE

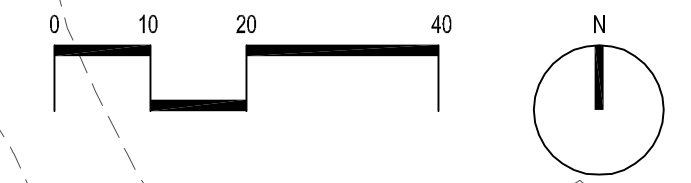
COVERED ICE ROOF WITH CHAIN LINK FENCE ENCLOSURE

6" UNDERDRAIN

APPROX. LIMIT OF EXISTING PAVEMENT & RINK

FALMOUTH VILLAGE PARK (TO REMAIN UNDISTURBED) ZONE VC1

GENERAL NOTES:
REFER TO LANDSCAPE DRAWINGS FOR ALL PLANTING NOTES



SERVICE DRIVE EXTENSION
DUMPSTER ENCLOSURE

BUILDING SETBACK

EXISTING UNDERGROUND LOCATIONS FOR SEWER, WATER, ELECTRICAL, PHONE, AND CABLE WITHIN PEDESTRIAN WALKWAY TO REMAIN. CONNECTIONS TO PROPOSED BUILDINGS TO BE PROVIDED.

EX. PEDESTRIAN PATH TO LIBRARY
PEDESTRIAN PATH CROSSING (MATERIAL CHANGE)
EX. SERVICE DRIVE
EX. TOWN BUILDING

APPROXIMATE PROPERTY LINE LOCATION

DROP OFF CIRCULAR SEAT / PLANTER

SIDEWALK

12" UNDERDRAIN

POSSIBLE RECONSTRUCTION OF SIDEWALK AND CURBING

EX. GAZEBO

EXISTING PARKING LOT

EX. LIGHT
PROPOSED DRAIN MANHOLE

POSSIBLE LOCATION OF NEW SUBSURFACE STORMWATER TREATMENT SYSTEM

EX. LIGHT

EXISTING CATCH BASIN. REPLACE GRATE WITH SOLID COVER.

TO PIPE OUTFALL

POSSIBLE LOCATION OF NEW CATCH BASIN

COORDINATE PROPOSED WORK WITH REALIGNMENT OF HAT TRICK DRIVE AS REQUIRED

POSSIBLY RECONSTRUCT, REGRADE & RESTRIPE PARKING LOT

NOT FOR CONSTRUCTION

No.	Revision	Date:
▲		
▲		
▲		
▲		

revisions:
date: APRIL 9 2014
scale: As Noted
drawn: XX
checked: XX

S1.0

PRELIMINARY SITE PLAN