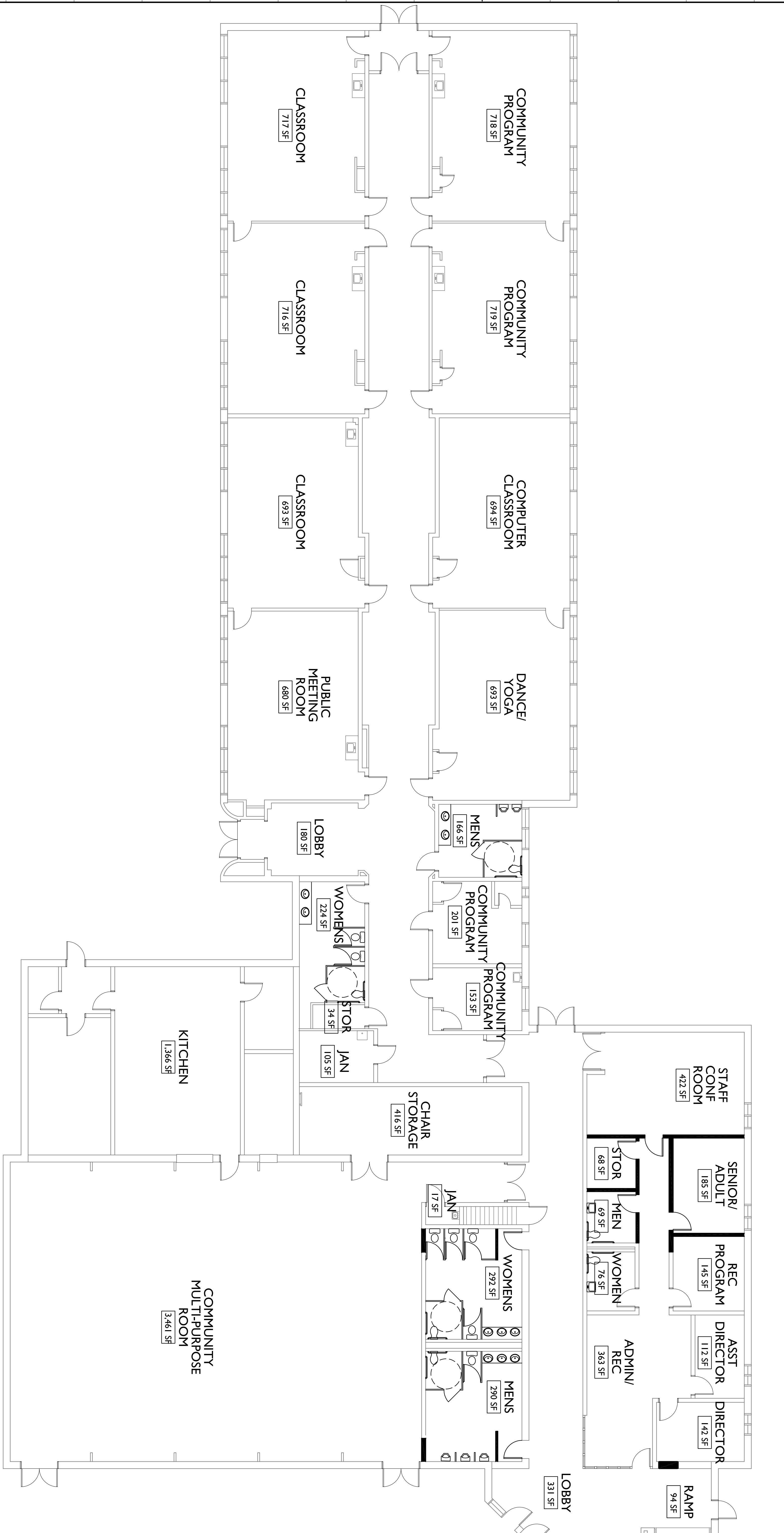


1/8"=1'-0" 19,222 SF 2 3 4 5 6 7 8 9 10 11 12 13 14 15 16 17 18 19 20

AI SCHEMATIC FLOOR PLAN



LEGEND/NOTES

- EXISTING WALLS TO REMAIN
- NEW WALLS & DOORS
- PROVIDE NEW WALL, FLOOR AND CEILING FINISHES THROUGHOUT ENTIRE BUILDING.
- PROVIDE NEW LIGHTING THROUGHOUT THE ENTIRE BUILDING.
- PROVIDE NEW PLUMBING FIXTURES THROUGHOUT THE ENTIRE BUILDING.

N16 FLOOR PLAN LEGEND

Gawron Turgeon ARCHITECTS
 29 Black Point Road
 Scarborough, Maine 04074
 www.gawronturgeon.com
 207.884.2222 • 207.884.2223

MOTZ MASON SCHOOL

FALMOUTH, MAINE

REVISIONS	
#	DATE DESCRIPTION
1	10.31.12 PRELIMINARY FINISHING

DATE	10.23.12
PROJECT #	099642
DRAWN BY	KW
CHECKED BY	RLD
DRAWING SCALE	1/8"=1'-0"

SHEET TITLE	
SCHEMATIC FLOOR PLAN	

A100

© COPYRIGHT 1985-2008
 Motz Mason School
 DOCUMENT NUMBER: 099642
 PROJECT # 099642
 DRAWN BY KW
 CHECKED BY RLD
 DRAWING SCALE 1/8"=1'-0"