

# **COST ESTIMATE FOR ABATEMENT AND REMEDIATION**

CLIENT: TOWN of FALMOUTH

NTC Job #: 12423-2011 (B)

## **PLUMMER SCHOOL SECTION**

**ASBESTOS CONTAINING MATERIALS: \$ 22300.00**

Abatement of 2480 square feet of asbestos flooring materials including clearance air sampling and reporting, windows not included.

**UNIVERSAL WASTE \$2800.00**

Packaging and disposal of the following Universal Waste items

### Mercury Containing Items

576 4' Bulbs  
70 Fluorescent U-Bulbs

### PCB/DEHP Containing Items

275 Ballasts

### Miscellaneous

7 Emergency Lights (Lead Acid and/or NiCd battery)

3 Battery Banks (18 Lead Acid and/or NiCd battery)

**LEAD BASED PAINT: Operations and maintenance required.  
Lead paint abatement costs can be in a range of \$8-\$15 per square foot.**

**RADON: no action required**

**PCB caulking : awaiting lab analysis**

# COST ESTIMATE FOR ABATEMENT AND REMEDIATION

CLIENT: TOWN of FALMOUTH  
NTC Job #: 12423-2011 (B)

## MOTZ SCHOOL SECTION

ASBESTOS CONTAINING MATERIALS: \$ 16500.00

1750 square feet of asbestos floor materials and air clearance sampling, not including window caulking abatement

UNIVERSAL WASTE \$ 2800.00

Packaging and disposal of the following Universal Waste items

### Mercury Containing Items

436	4' Fluorescent Bulbs
1	2' Fluorescent Bulb
76	Fluorescent U-Bulbs

### PCB/DEHP Containing Items

218	Ballasts
-----	----------

### Miscellaneous

10	Fluorescent Exit Signs
3	Emergency Lights (Lead Acid and/or NiCd battery)

**LEAD BASED PAINT: Operations and maintenance required. Lead paint abatement costs can be in a range of \$8-\$15 per square foot.**

**RADON: no action required**

**PCB caulking : awaiting lab analysis**

# **COST ESTIMATE FOR ABATEMENT AND REMEDIATION**

CLIENT: TOWN of FALMOUTH  
NTC Job #: 12423-2011 (B)  
PROJECT: **LUNT SCHOOL**

## **ASBESTOS CONTAINING MATERIAL: \$21300.00**

Abatement of 2360 square feet of asbestos tile and mastic along with air clearance sampling and reports

## **UNIVERSAL WASTE: \$ 2400.00**

Packaging and disposal of 344 4 foot bulbs and 10 HD bulbs along with 173 ballasts

## **LEAD BASED PAINT: Operations and maintenance required**

**Lead paint abatement costs can be in a range of \$8-\$15 per square foot.**

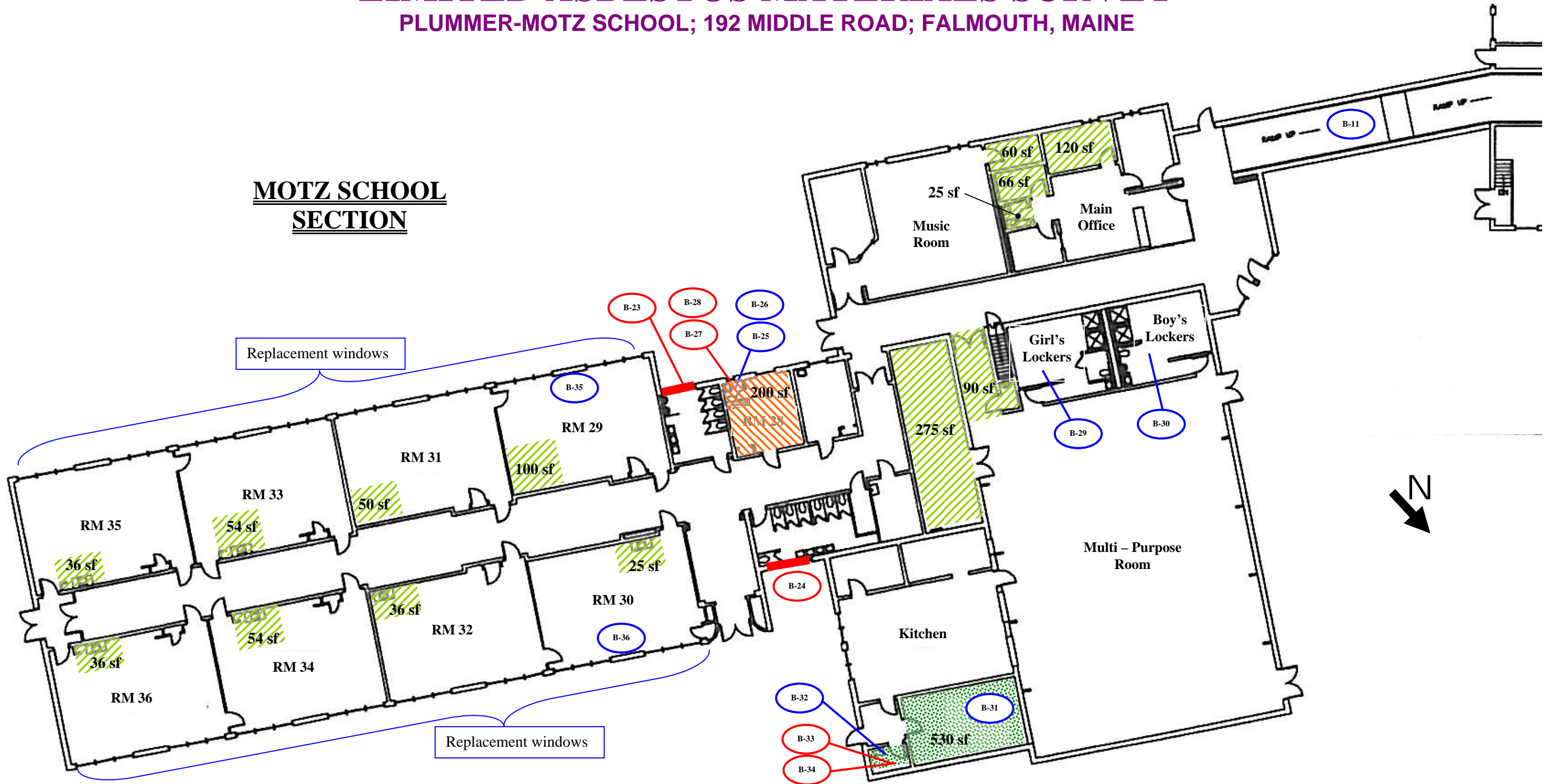
**RADON: no action required**

**PCB caulking : awaiting lab analysis**

# LIMITED ASBESTOS MATERIALS SURVEY

PLUMMER-MOTZ SCHOOL; 192 MIDDLE ROAD; FALMOUTH, MAINE

## MOTZ SCHOOL SECTION



KEY:			
<span style="border: 1px solid red; border-radius: 50%; padding: 2px;">B-</span>	BULK SAMPLES POSITIVE for ASBESTOS		ASBESTOS 12"X 12" LIGHT BROWN W/BROWN STREAK FLOOR TILE & BLACK MASTIC
<span style="border: 1px solid blue; border-radius: 50%; padding: 2px;">B-</span>	BULK SAMPLES NEGATIVE for ASBESTOS		ASBESTOS 12"X 12" BLACK FLOOR & BLACK MASTIC (bottom layer)
	ASBESTOS WINDOW GLAZING		ASBESTOS BLACK MASTIC (under non-asbestos blue tiles)

NTC

**NORTHEAST TEST CONSULTANTS**

NTC JOB #12423-2011

DRAWING DATE: 2-9-2011

JMB

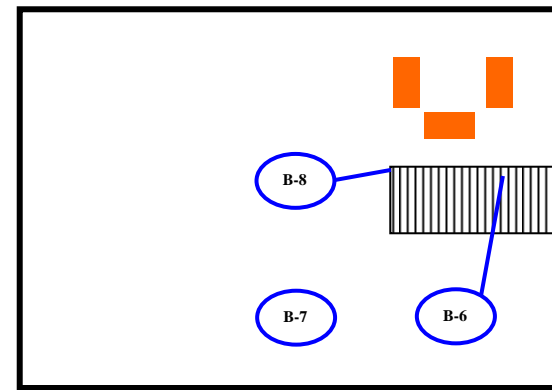
DRAWING NOT TO SCALE



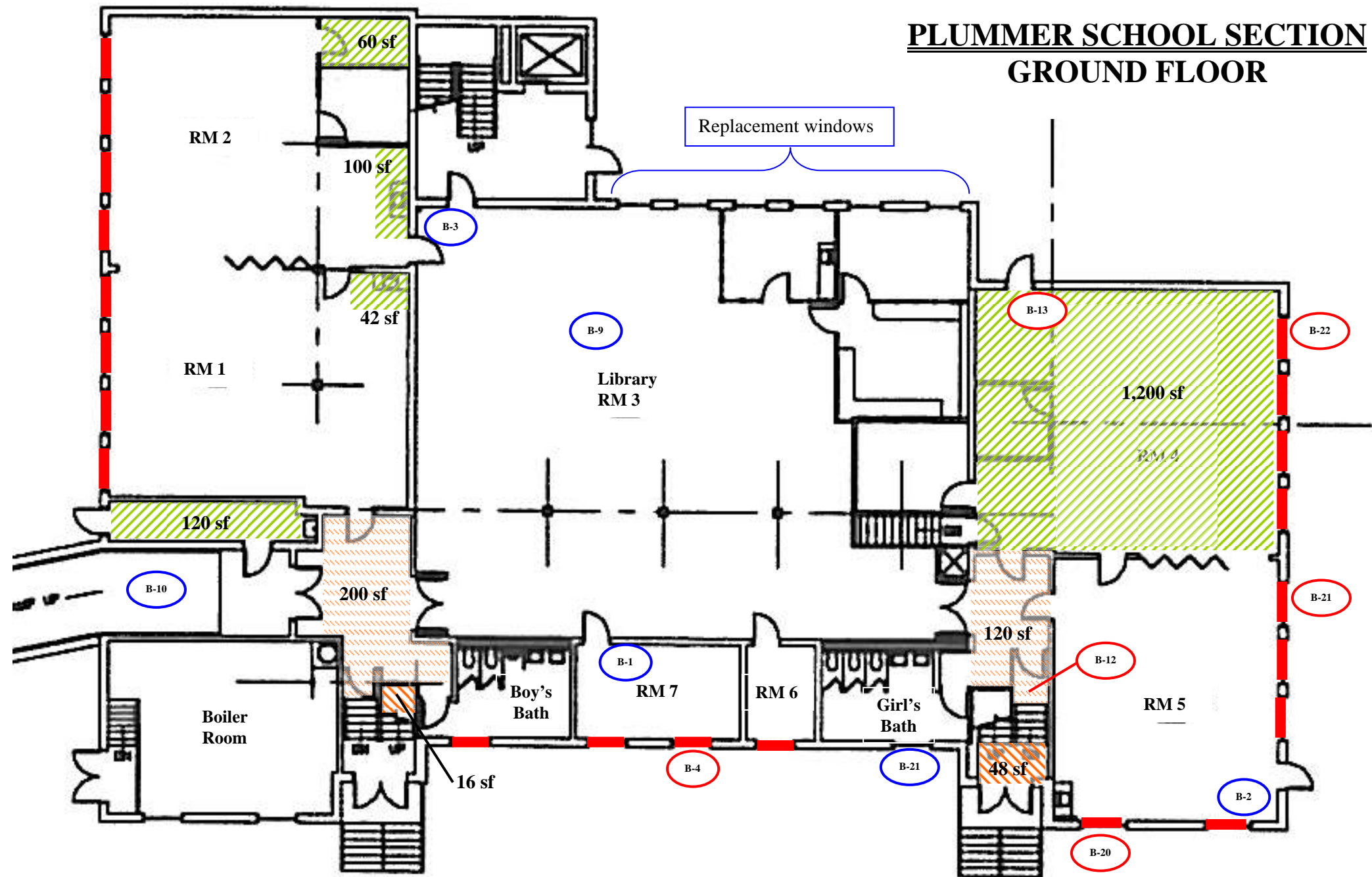
# LIMITED ASBESTOS MATERIALS SURVEY

PLUMMER-MOTZ SCHOOL; 192 MIDDLE ROAD; FALMOUTH, MAINE





## PLUMMER SCHOOL SECTION GROUND FLOOR






**BASEMENT  
MECHANICAL  
ROOM**



**KEY:**

-  B- BULK SAMPLES POSITIVE for ASBESTOS
-  B- BULK SAMPLES NEGATIVE for ASBESTOS
-  ASBESTOS DUCTWORK FLEX JOINTS (approx. 40 square feet)
-  ASBESTOS WINDOW GLAZING

-  ASBESTOS 12"X 12" LIGHT BROWN W/BROWN STREAK FLOOR TILE & BLACK MASTIC
-  ASBESTOS 12"X 12" BLACK FLOOR TILE & BLACK MASTIC
-  ASBESTOS 12"X 12" BLACK FLOOR TILE & BLACK MASTIC (assumed to be present under carpeting)



**NORTHEAST TEST CONSULTANTS**

NTC JOB #12423-2011

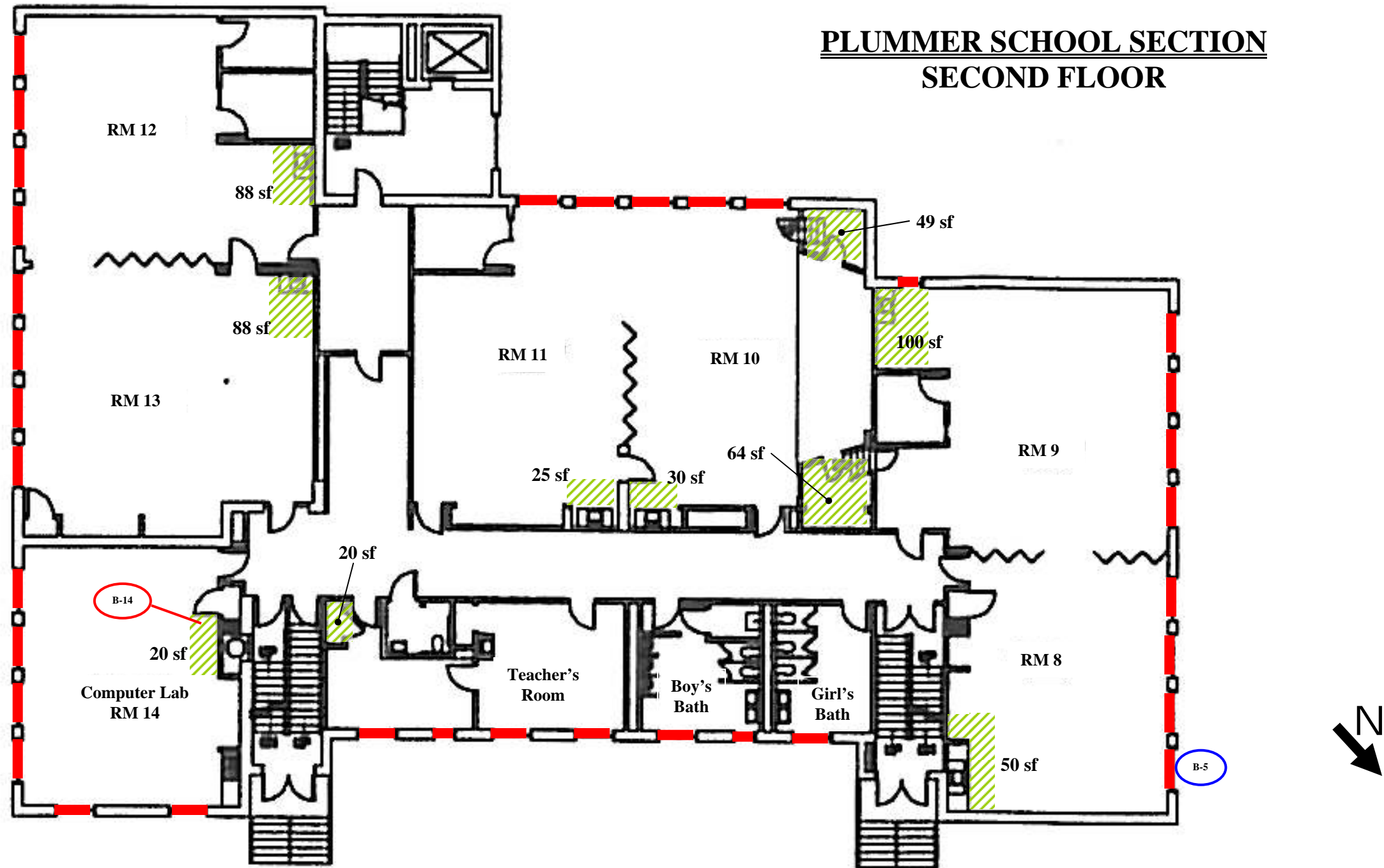
DRAWING DATE: 2-9-2011  
JMB

DRAWING NOT TO SCALE

# LIMITED ASBESTOS MATERIALS SURVEY

PLUMMER-MOTZ SCHOOL; 192 MIDDLE ROAD; FALMOUTH, MAINE

## PLUMMER SCHOOL SECTION SECOND FLOOR



**KEY:**



BULK SAMPLES POSITIVE for ASBESTOS



BULK SAMPLES NEGATIVE for ASBESTOS



ASBESTOS 12"X 12" LIGHT BROWN W/BROWN STREAK FLOOR TILE & BLACK MASTIC



ASBESTOS WINDOW GLAZING



NORTHEAST TEST CONSULTANTS

NTC JOB #12423-2011

DRAWING DATE: 2-9-2011

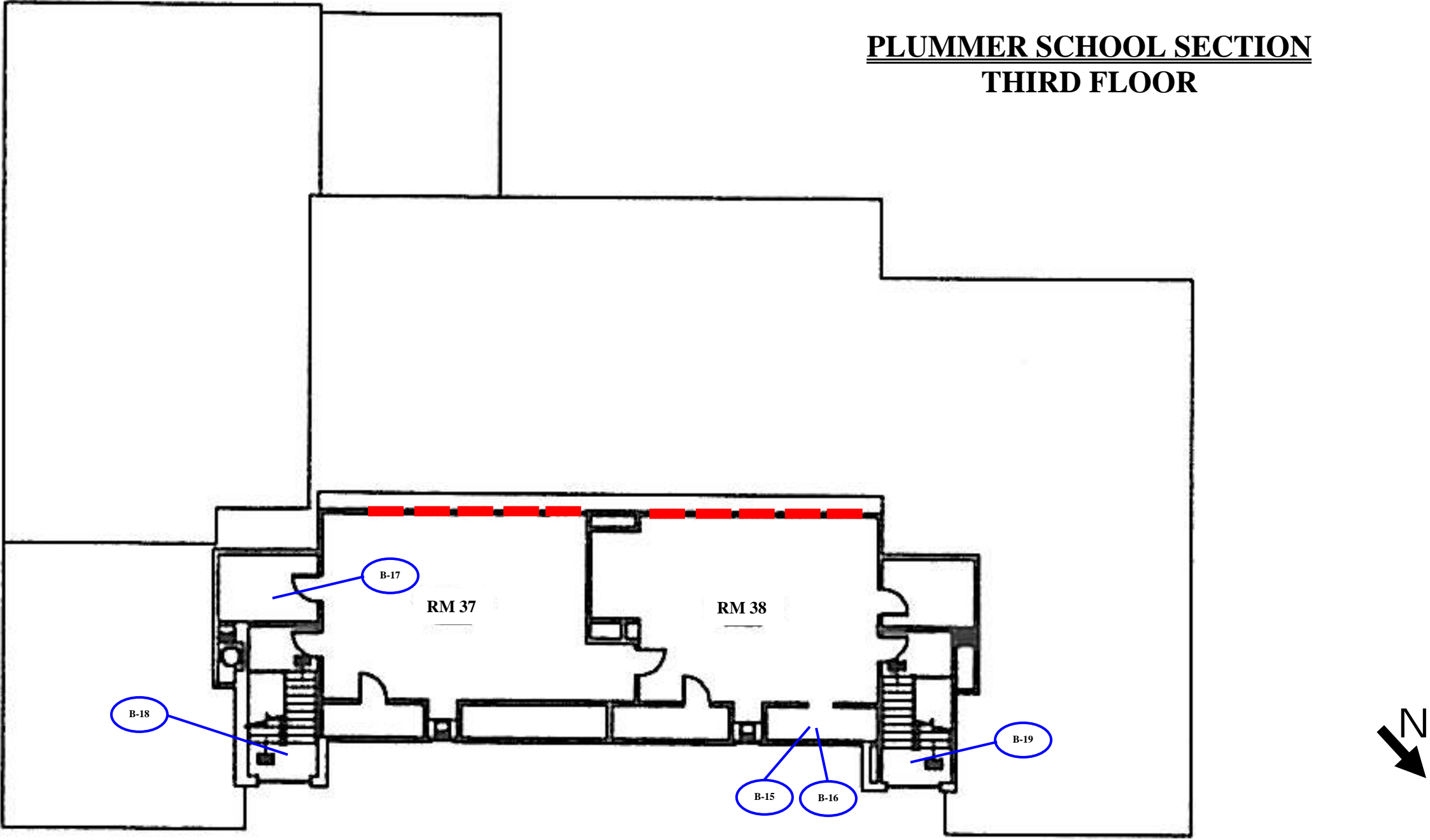
JMB

DRAWING NOT TO SCALE

# LIMITED ASBESTOS MATERIALS SURVEY

PLUMMER-MOTZ SCHOOL; 192 MIDDLE ROAD; FALMOUTH, MAINE

## PLUMMER SCHOOL SECTION THIRD FLOOR



**KEY:**

**B-** BULK SAMPLES POSITIVE for ASBESTOS

**B-** BULK SAMPLES NEGATIVE for ASBESTOS



NORTHEAST TEST CONSULTANTS

NTC JOB #12423-2011

DRAWING DATE: 2-9-2011  
JMB

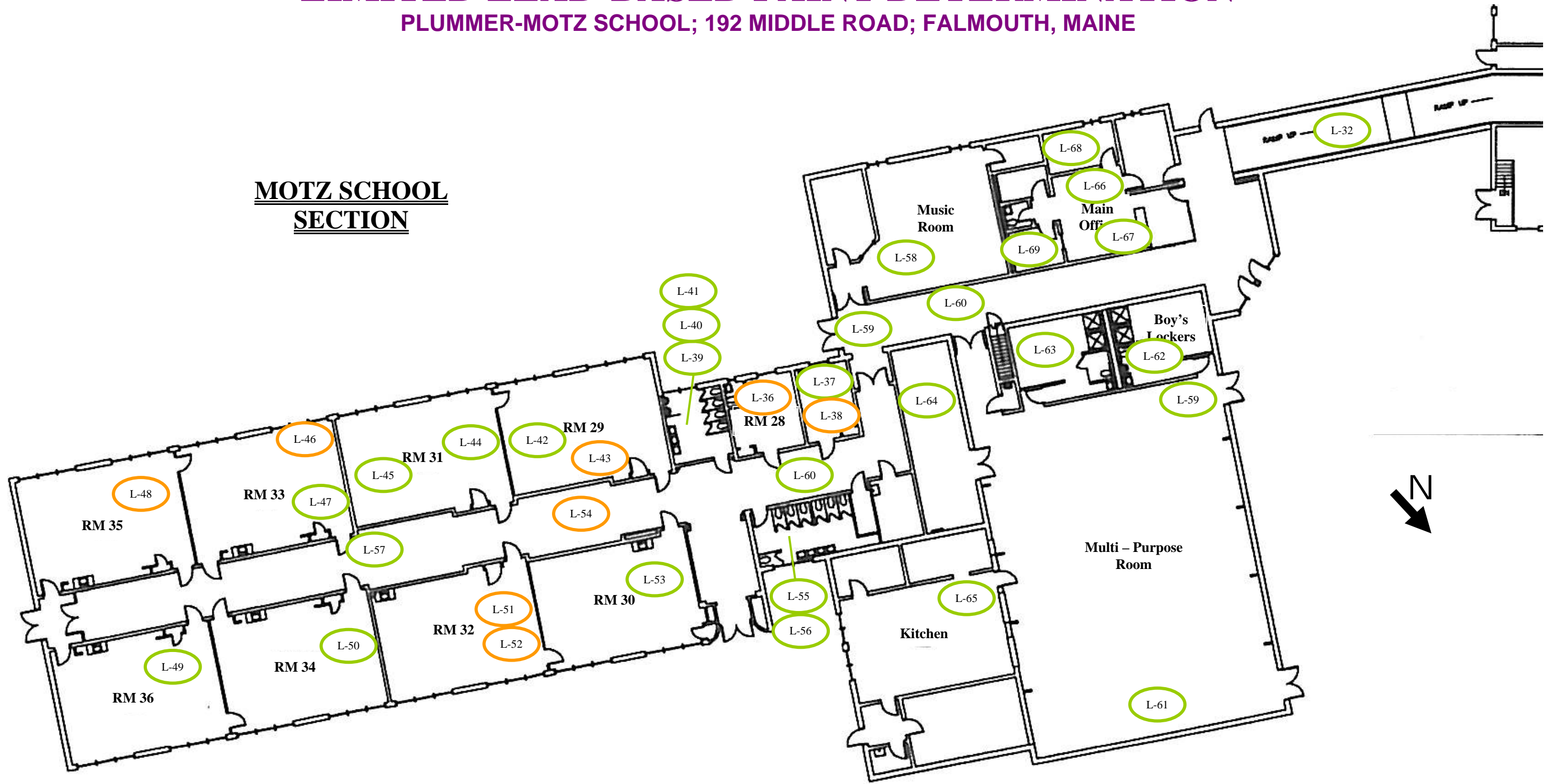
DRAWING NOT TO SCALE



# LIMITED LEAD-BASED PAINT DETERMINATION

PLUMMER-MOTZ SCHOOL; 192 MIDDLE ROAD; FALMOUTH, MAINE

## MOTZ SCHOOL SECTION



**KEY:**

- BULK SAMPLE WITH LEAD < 1.0 MG/CM2 by XRF
- BULK SAMPLE WITH LEAD > 1.0 MG/CM2 by XRF INDICATING PRESENCE OF LEAD CONTENT



NORTHEAST TEST CONSULTANTS

NTC JOB #12423-2011

DRAWING DATE: 2-8-2011  
MF

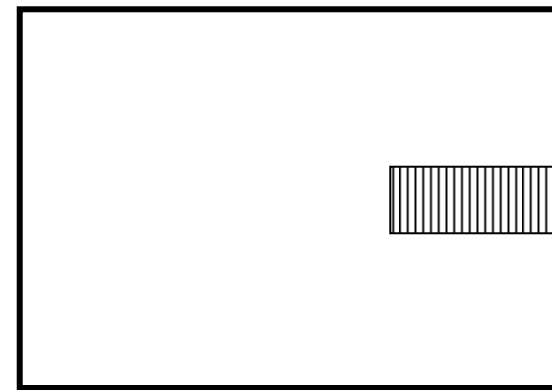
DRAWING NOT TO SCALE



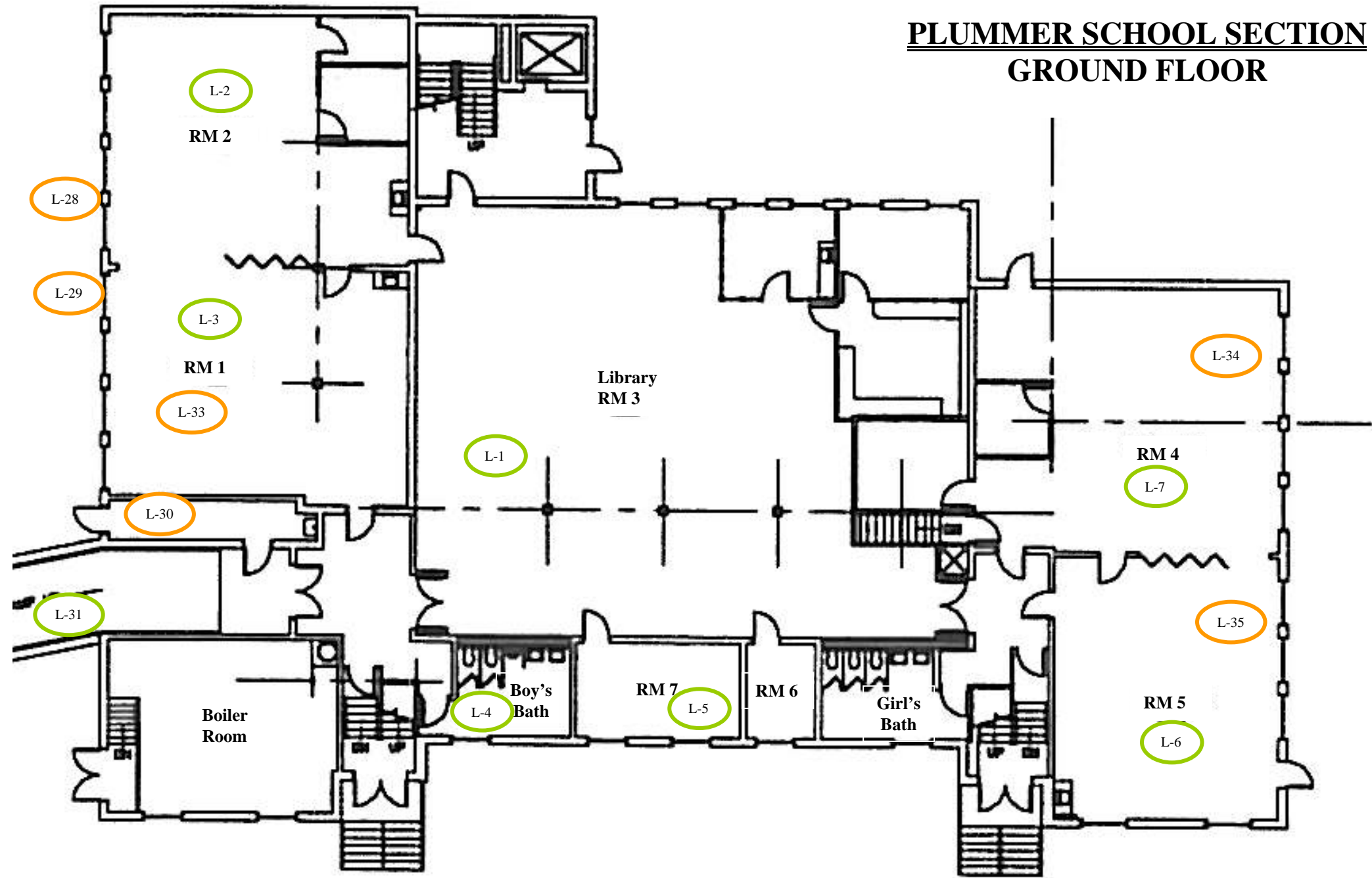
# LIMITED LEAD-BASED PAINT DETERMINATION

PLUMMER-MOTZ SCHOOL; 192 MIDDLE ROAD; FALMOUTH, MAINE



## PLUMMER SCHOOL SECTION GROUND FLOOR



**BASEMENT  
MECHANICAL  
ROOM**



**KEY:**

-  BULK SAMPLE WITH LEAD < 1.0 MG/CM2 by XRF
-  BULK SAMPLE WITH LEAD > 1.0 MG/CM2 by XRF INDICATING PRESENCE OF LEAD CONTENT



**NORTHEAST TEST CONSULTANTS**

NTC JOB #12423-2011

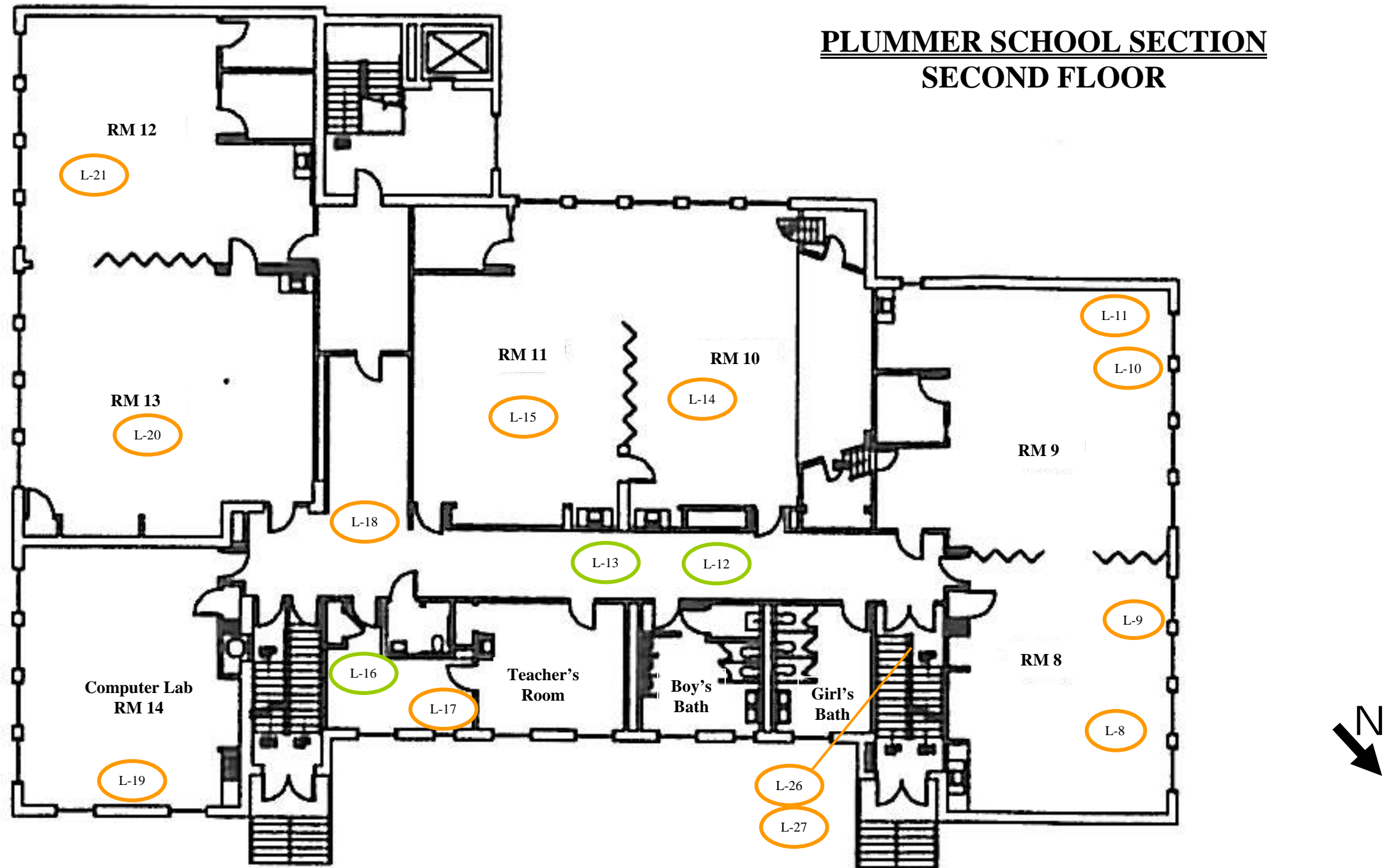
DRAWING DATE: 2-8-2011  
MF

DRAWING NOT TO SCALE

# LIMITED LEAD-BASED PAINT DETERMINATION

PLUMMER-MOTZ SCHOOL; 192 MIDDLE ROAD; FALMOUTH, MAINE

## PLUMMER SCHOOL SECTION SECOND FLOOR



### KEY:

- BULK SAMPLE WITH LEAD  $< 1.0 \text{ MG/CM}^2$  by XRF
- BULK SAMPLE WITH LEAD  $> 1.0 \text{ MG/CM}^2$  by XRF INDICATING PRESENCE OF LEAD CONTENT



NORTHEAST TEST CONSULTANTS

NTC JOB #12423-2011

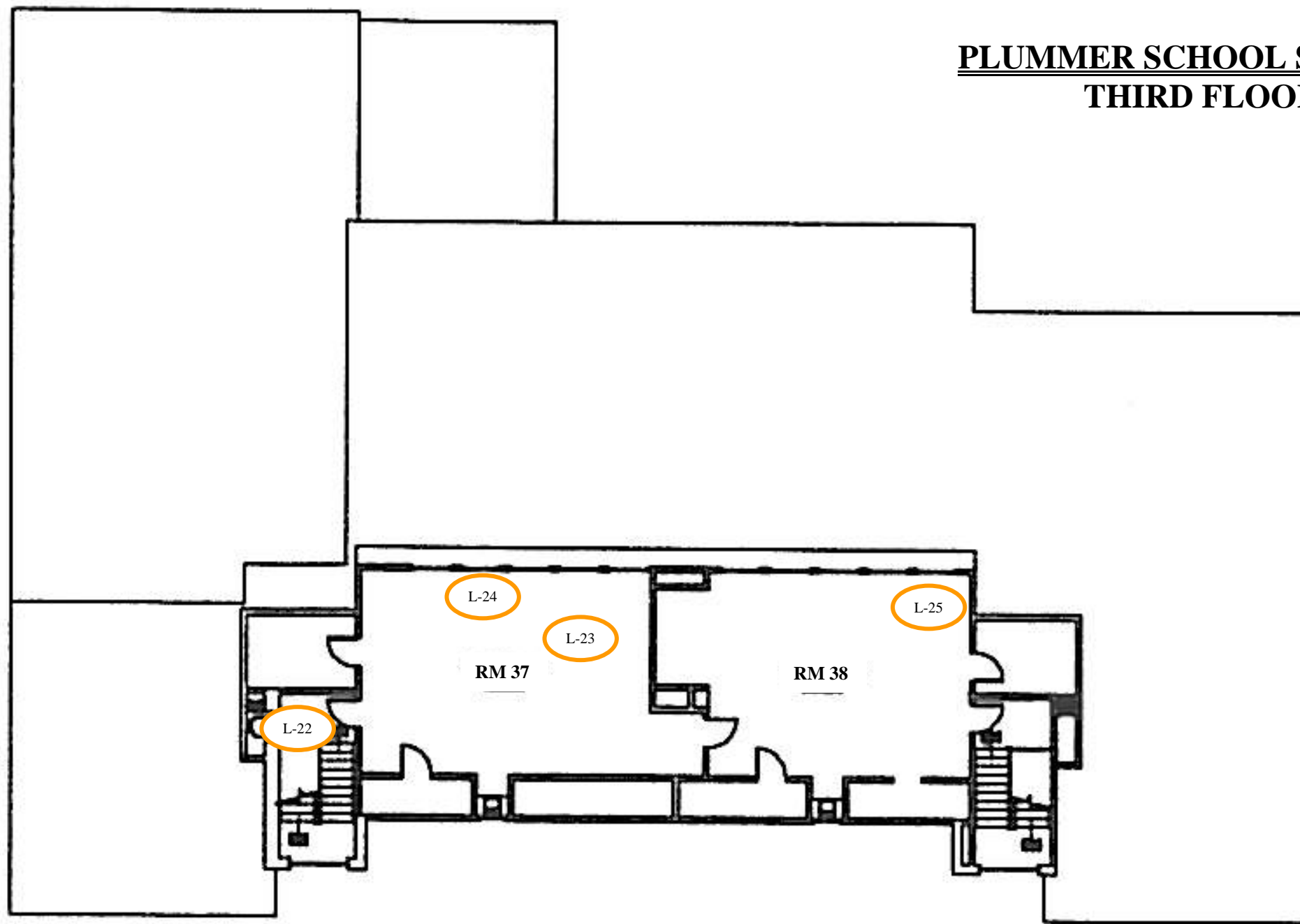
DRAWING DATE: 2-8-2011  
MF

DRAWING NOT TO SCALE

# LIMITED ASBESTOS MATERIALS SURVEY

PLUMMER-MOTZ SCHOOL; 192 MIDDLE ROAD; FALMOUTH, MAINE

## PLUMMER SCHOOL SECTION THIRD FLOOR



**KEY:**



BULK SAMPLE WITH LEAD < 1.0 MG/CM2 by XRF



BULK SAMPLE WITH LEAD > 1.0 MG/CM2 by XRF  
INDICATING PRESENCE OF LEAD CONTENT



NORTHEAST TEST CONSULTANTS

NTC JOB #12423-2011

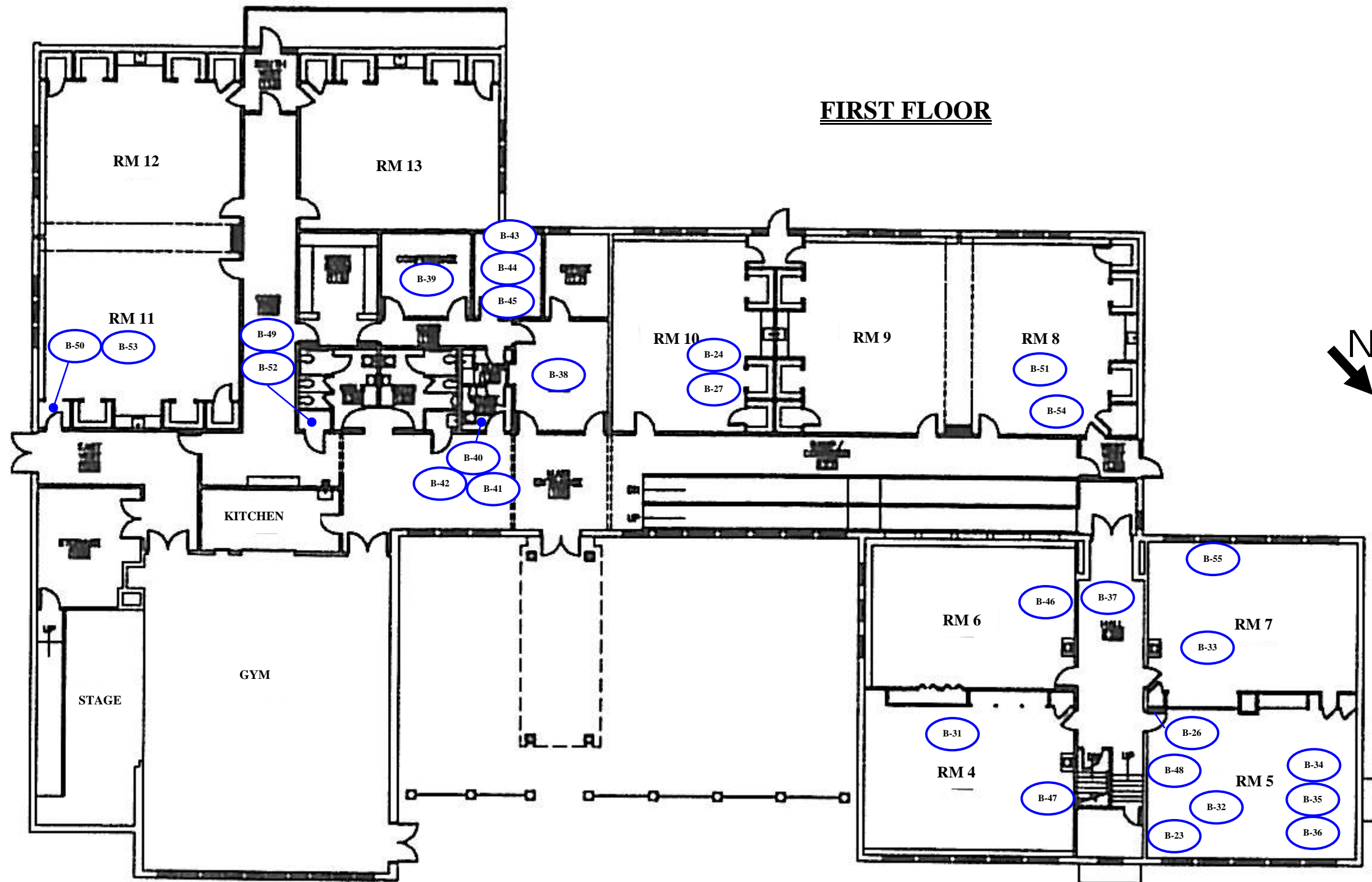
DRAWING DATE: 2-8-2011  
MF

DRAWING NOT TO SCALE



# LIMITED ASBESTOS MATERIALS SURVEY

LUNT SCHOOL; 74 LUNT ROAD; FALMOUTH, MAINE



**KEY:**

- B-** (red circle) BULK SAMPLES POSITIVE for ASBESTOS
- B-** (blue circle) BULK SAMPLES NEGATIVE for ASBESTOS

**NTC** NORTHEAST TEST CONSULTANTS

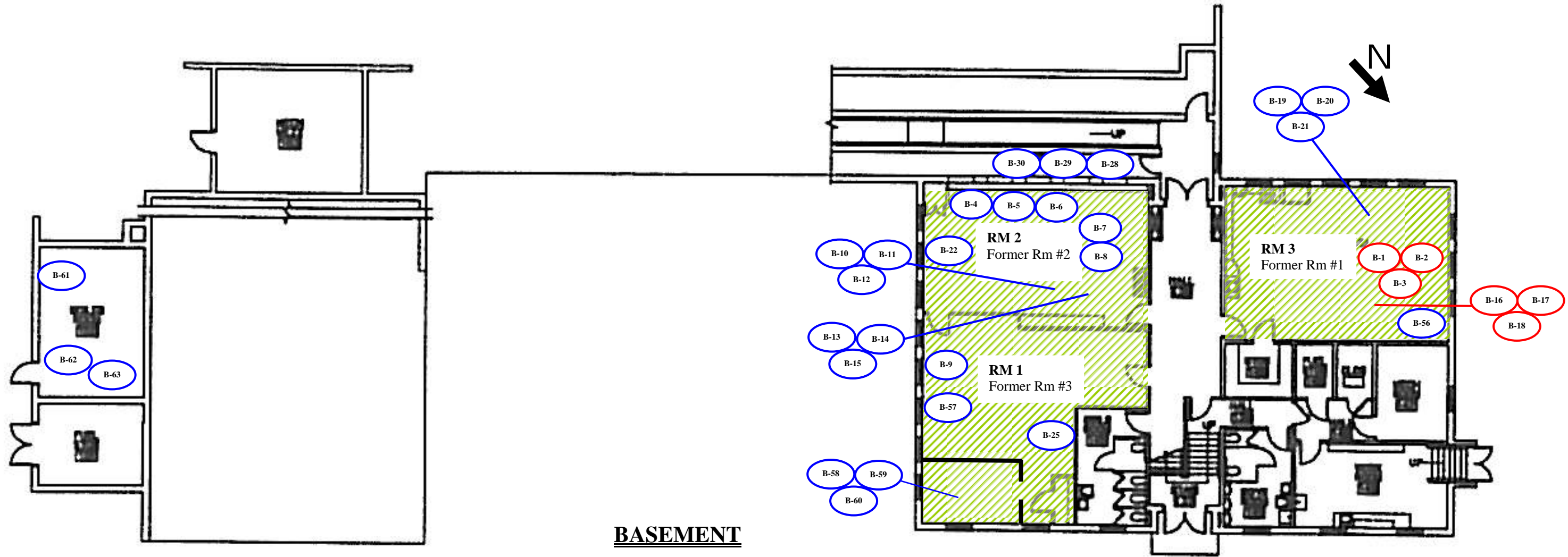
NTC JOB #12423-2011B

DRAWING DATE: 2-9-2011 MF


DRAWING NOT TO SCALE


# LIMITED ASBESTOS MATERIALS SURVEY


## LUNT SCHOOL; 74 LUNT ROAD; FALMOUTH, MAINE




**KEY:**

 ASBESTOS FLOOR TILE 9"X 9" BLACK/GREEN PATCHWORK & ASBESTOS BLACK MASTIC (Under Carpeting and/or 12"x 12" Non-Asbestos Floor Tiles) [Approx. 2,360 square feet]

 B- BULK SAMPLES POSITIVE for ASBESTOS

 B- BULK SAMPLES NEGATIVE for ASBESTOS

 **NORTHEAST TEST CONSULTANTS**

NTC JOB #12423-2011B

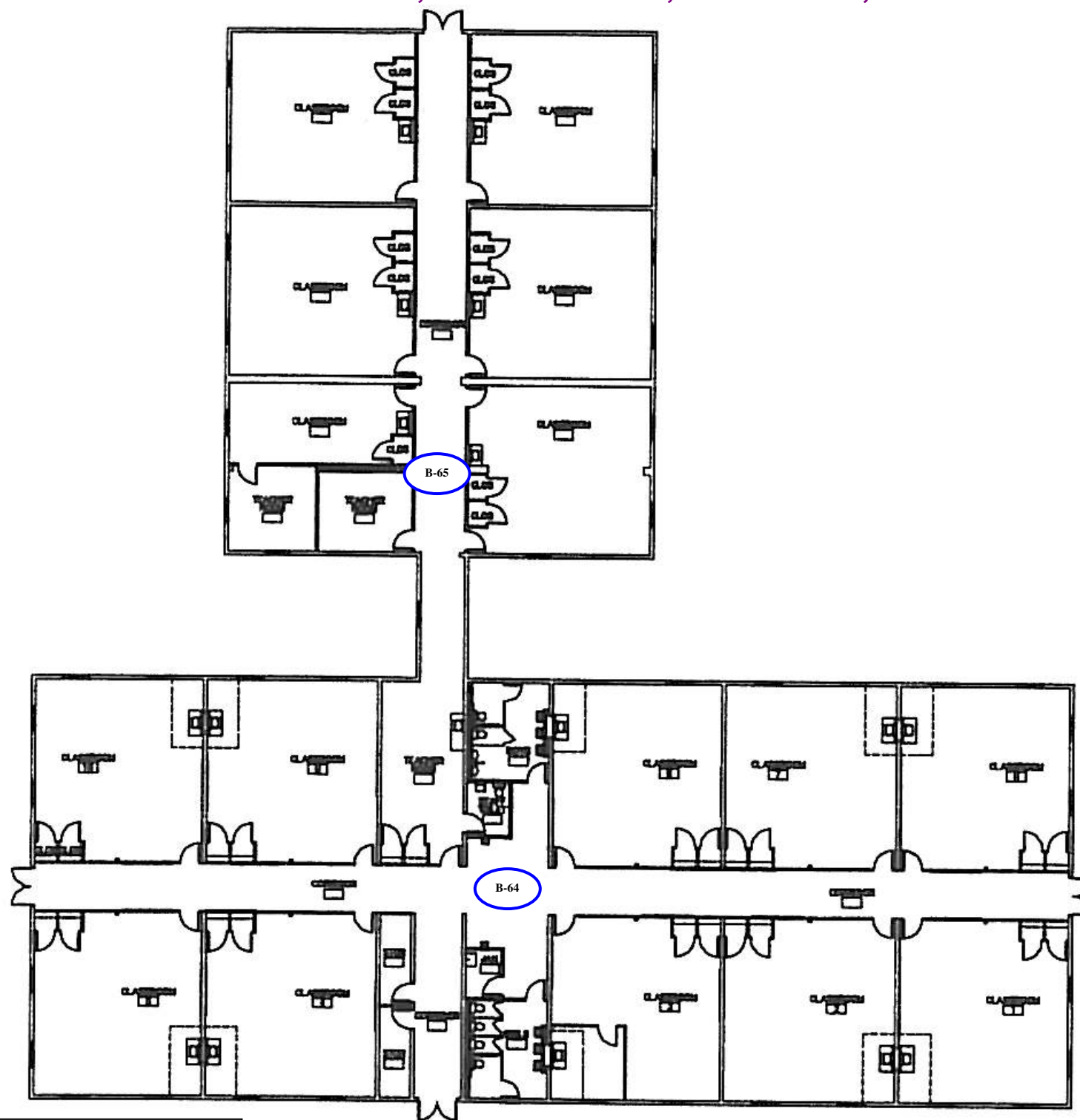
DRAWING DATE: 2-9-2011 MF

DRAWING NOT TO SCALE



# LIMITED ASBESTOS MATERIALS SURVEY

LUNT SCHOOL; 74 LUNT ROAD; FALMOUTH, MAINE

PORTABLES



**KEY:**

-  B- BULK SAMPLES POSITIVE for ASBESTOS
-  B- BULK SAMPLES NEGATIVE for ASBESTOS



NORTHEAST TEST CONSULTANTS

NTC JOB #12423-2011B

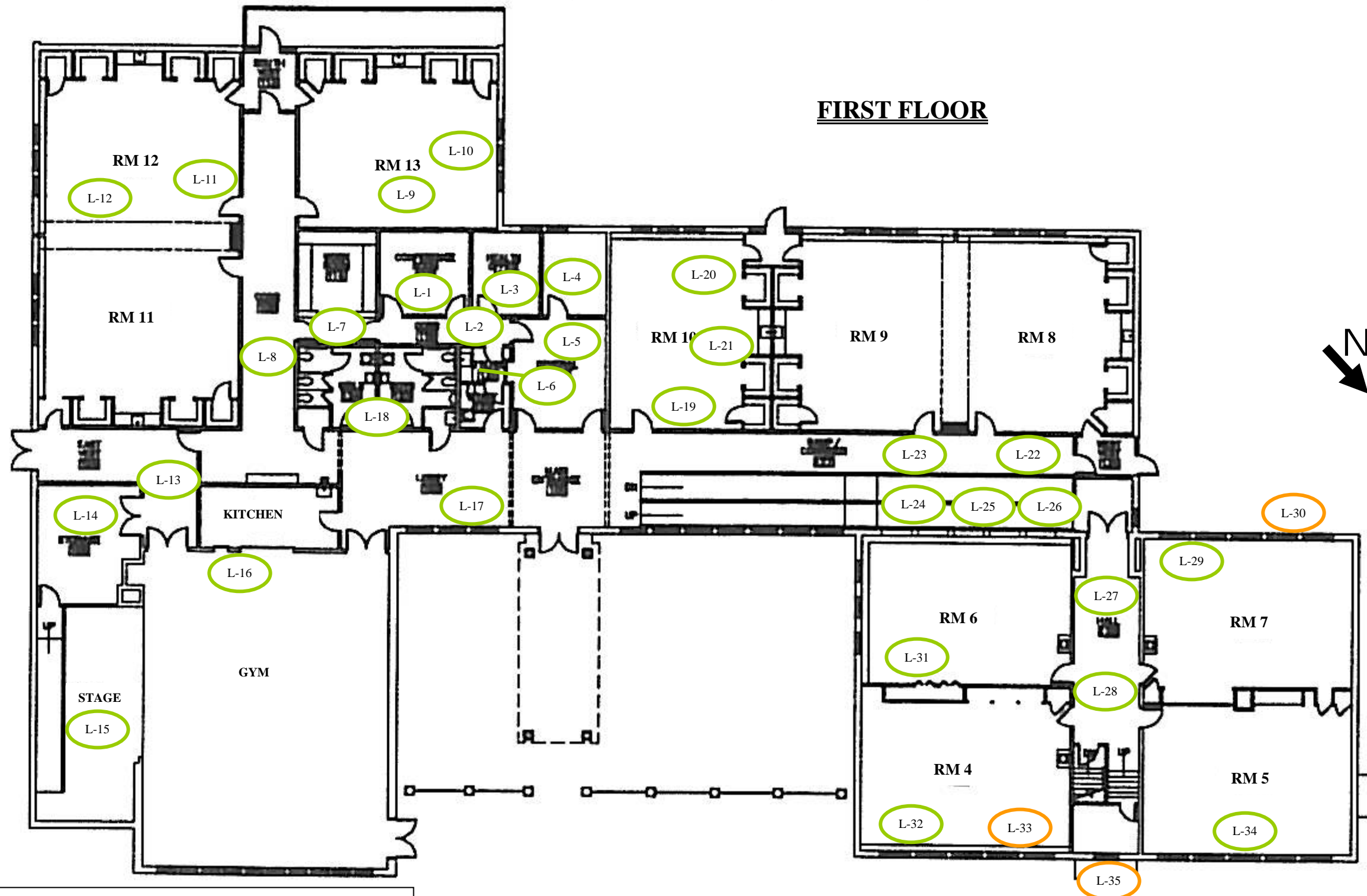
DRAWING DATE: 2-9-2011  
MF

DRAWING NOT TO SCALE




# LIMITED LEAD-BASED PAINT DETERMINATION

LUNT SCHOOL; 74 LUNT ROAD; FALMOUTH, MAINE



**KEY:**

- L- BULK SAMPLE WITH LEAD < 1.0 MG/CM2 by XRF
- L- BULK SAMPLE WITH LEAD > 1.0 MG/CM2 by XRF INDICATING PRESENCE OF LEAD CONTENT

 **NORTHEAST TEST CONSULTANTS**

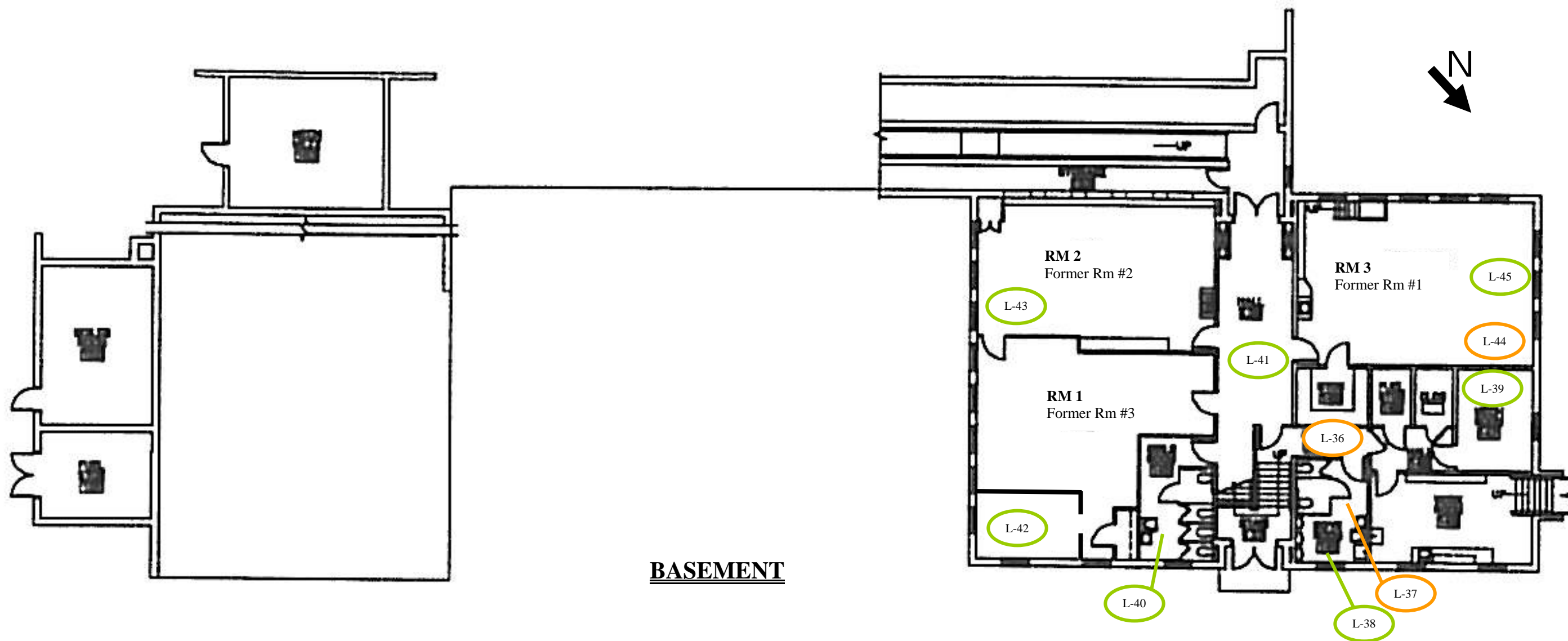
NTC JOB #12423-2011

DRAWING DATE: 2-9-2011  
JMB

DRAWING NOT TO SCALE

# LIMITED LEAD-BASED PAINT DETERMINATION

LUNT SCHOOL; 74 LUNT ROAD; FALMOUTH, MAINE



**KEY:**



BULK SAMPLE WITH LEAD < 1.0 MG/CM2 by XRF



BULK SAMPLE WITH LEAD > 1.0 MG/CM2 by XRF  
INDICATING PRESENCE OF LEAD CONTENT



NORTHEAST TEST CONSULTANTS

NTC JOB #12423-2011

DRAWING DATE: 2-9-2011

JMB

DRAWING NOT TO SCALE