

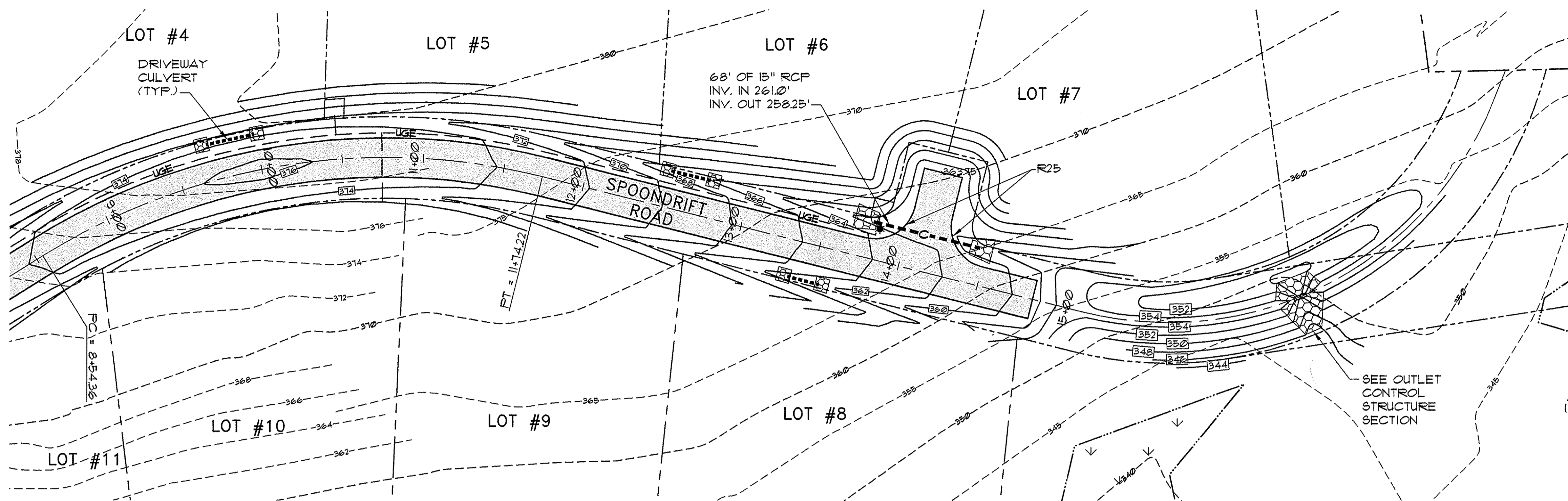
**LEGEND**

**EXISTING**

- PROPERTY LINE
- ABUTTERS PROPERTY
- EDGE OF PAVEMENT
- CONTOURS
- BUILDING
- WETLAND
- OHE --- OVERHEAD ELECTRIC
- UTILITY POLE

**DESIGNED**

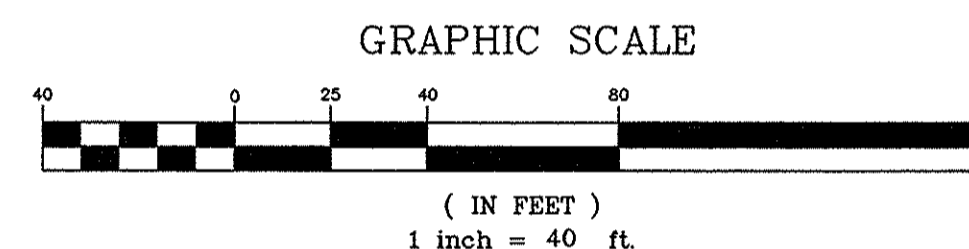
- LOT LINE
- CONSERVATION BUFFER
- CMP TRANSFORMER
- EASEMENT
- EDGE OF PAVEMENT
- CONTOURS
- UGE --- UNDERGROUND ELECTRIC
- C --- CULVERT
- DRIVEWAY CULVERT
- CENTERLINE
- SPOT GRADE
- RIPRAP
- LIGHT POLE



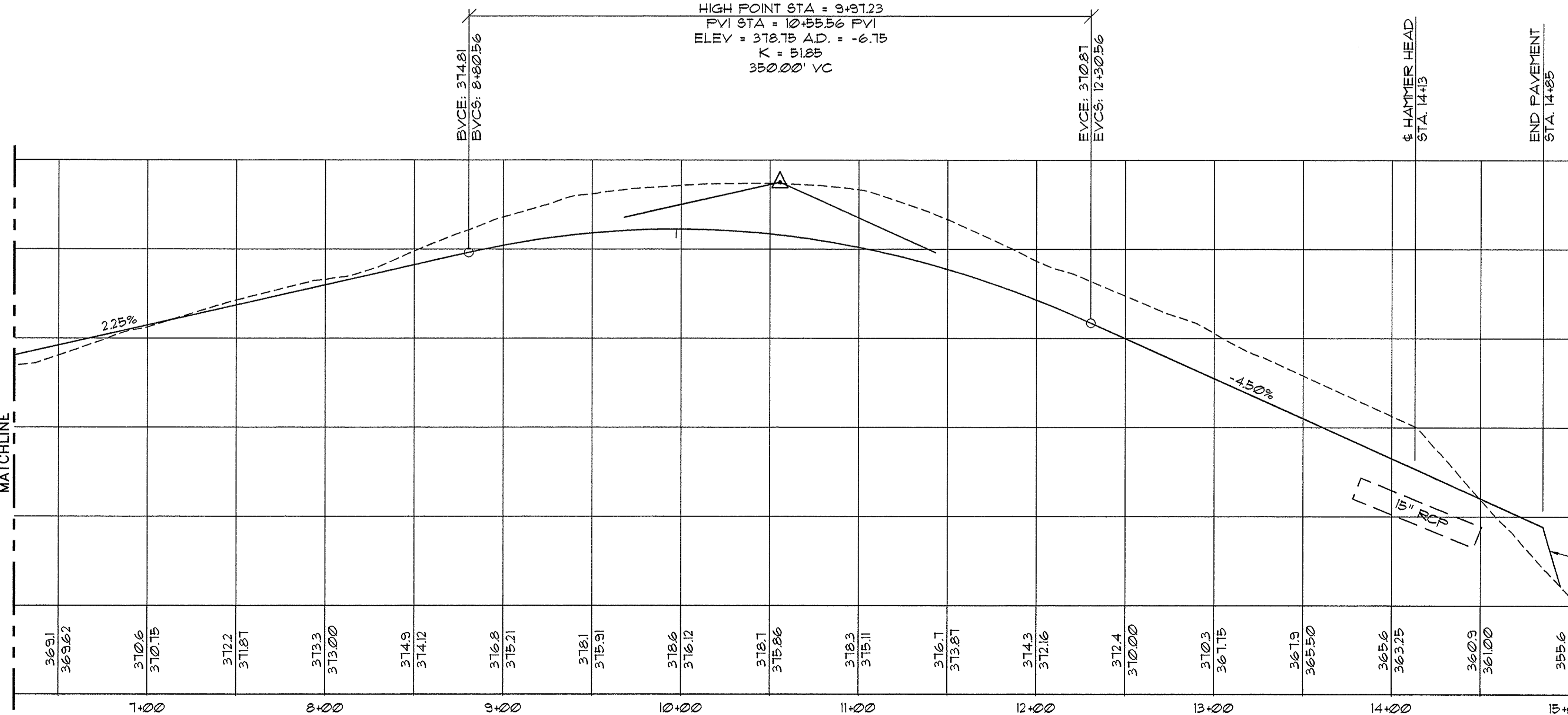
**NOTE:**  
1. DRIVEWAY CULVERTS  
12" HDPE FOR LOTS: 4 & 8  
15" HDPE FOR LOTS: 6 & 11

**ROAD PLAN**

SCALE: 1"=40'

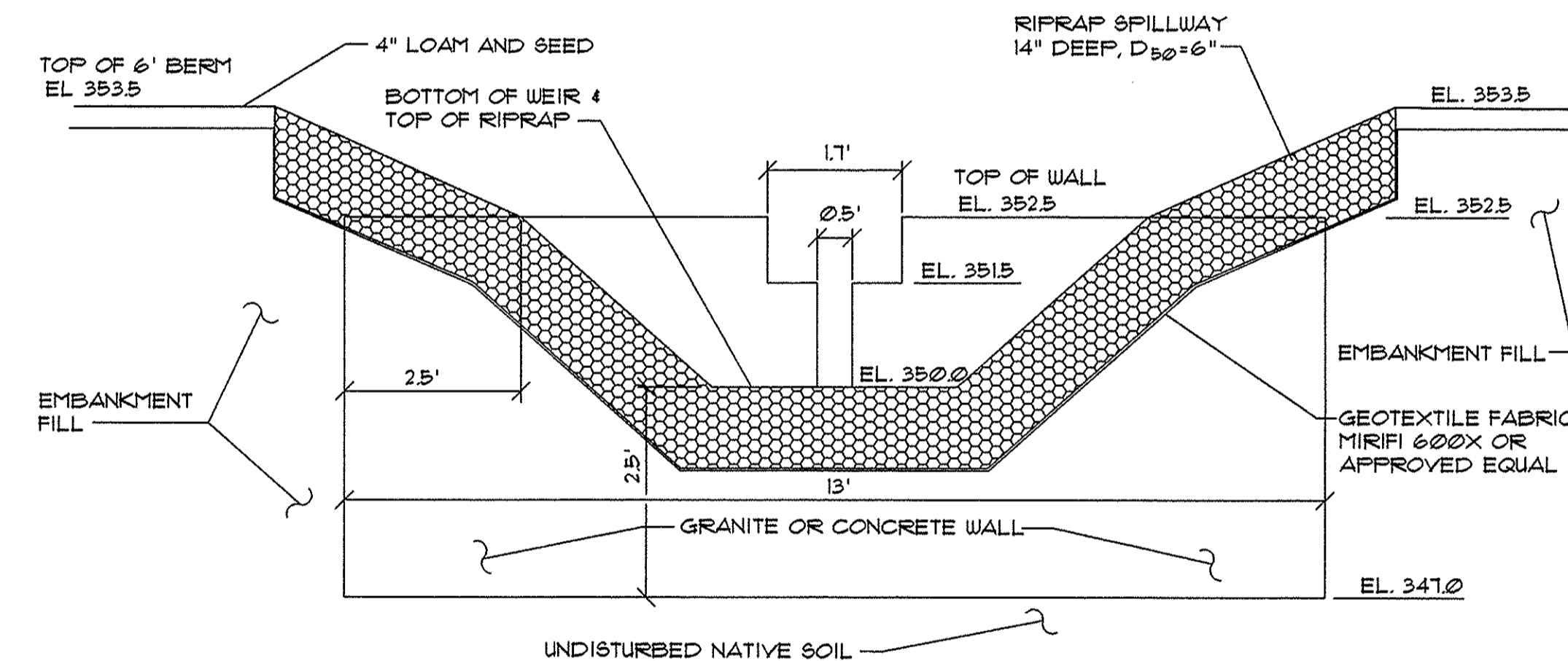


HIGH POINT ELEV = 376.12  
HIGH POINT STA = 9+97.23  
FVI STA = 10+55.56 FVI  
ELEV = 378.75 A.D. = -6.75  
K = 51.85  
350.00' VC



**ROAD PROFILE VIEW**

SCALE: HORIZ: 1"=40'  
VERT: 1"=4'



**WEIR CONSTRUCTION NOTES:**

1. INSTALL 2' THICK GRANITE OR CONCRETE WEIR AS SHOWN ON PLAN. MORTAR GRANITE JOINTS.
2. WALL SIDES AND BOTTOM TO BE EMBEDDED MINIMUM 1' INTO EMBANKMENT BEYOND RIPRAP.

**OUTLET CONTROL STRUCTURE SECTION**

NOT TO SCALE

RECORD DRAWING BASED ON PERIODIC FIELD OBSERVATIONS BY STEVE S. WALKER, PINKHAM & GREER CONSULTING ENGINEERS

REV.	DATE	DESCRIPTION
1	1-08-10	PREPARE RECORD DRAWING FOR TOWN

**PINKHAM & GREER**  
JEFFREY SOULE  
SCARBOROUGH, MAINE  
SPOONDRIFT ROAD  
BODKIN FARMS, FALMOUTH, MAINE  
PLAN & ROAD PROFILE  
STA. 6+25 TO 15+0

SCALE: AS SHOWN	DRN BY: NRA/SSW/RJS
DATE: JANUARY 8, 2010	DESG BY: TSG
PROJECT: 03144	CHK BY: TSG

