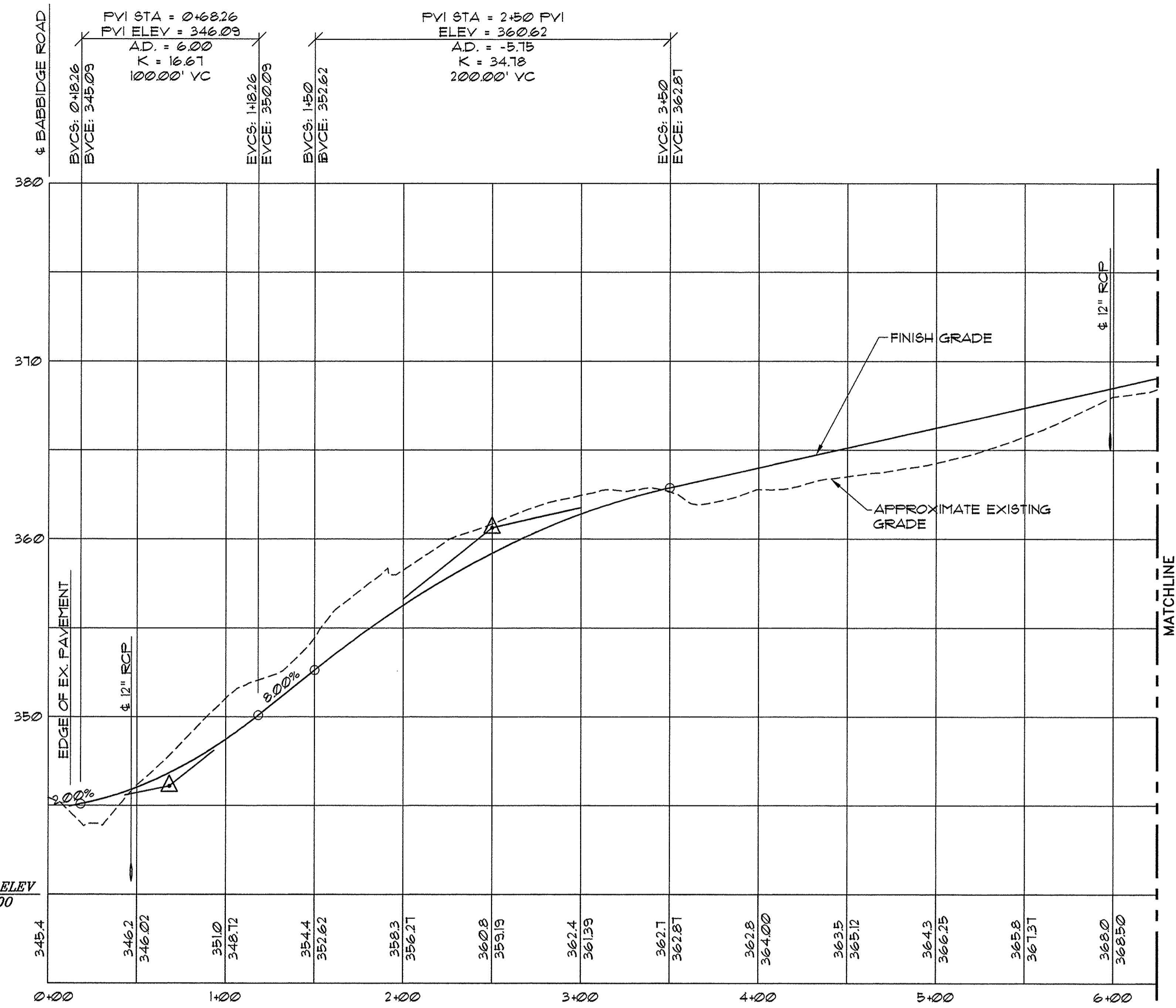


TYPICAL ROAD SECTION

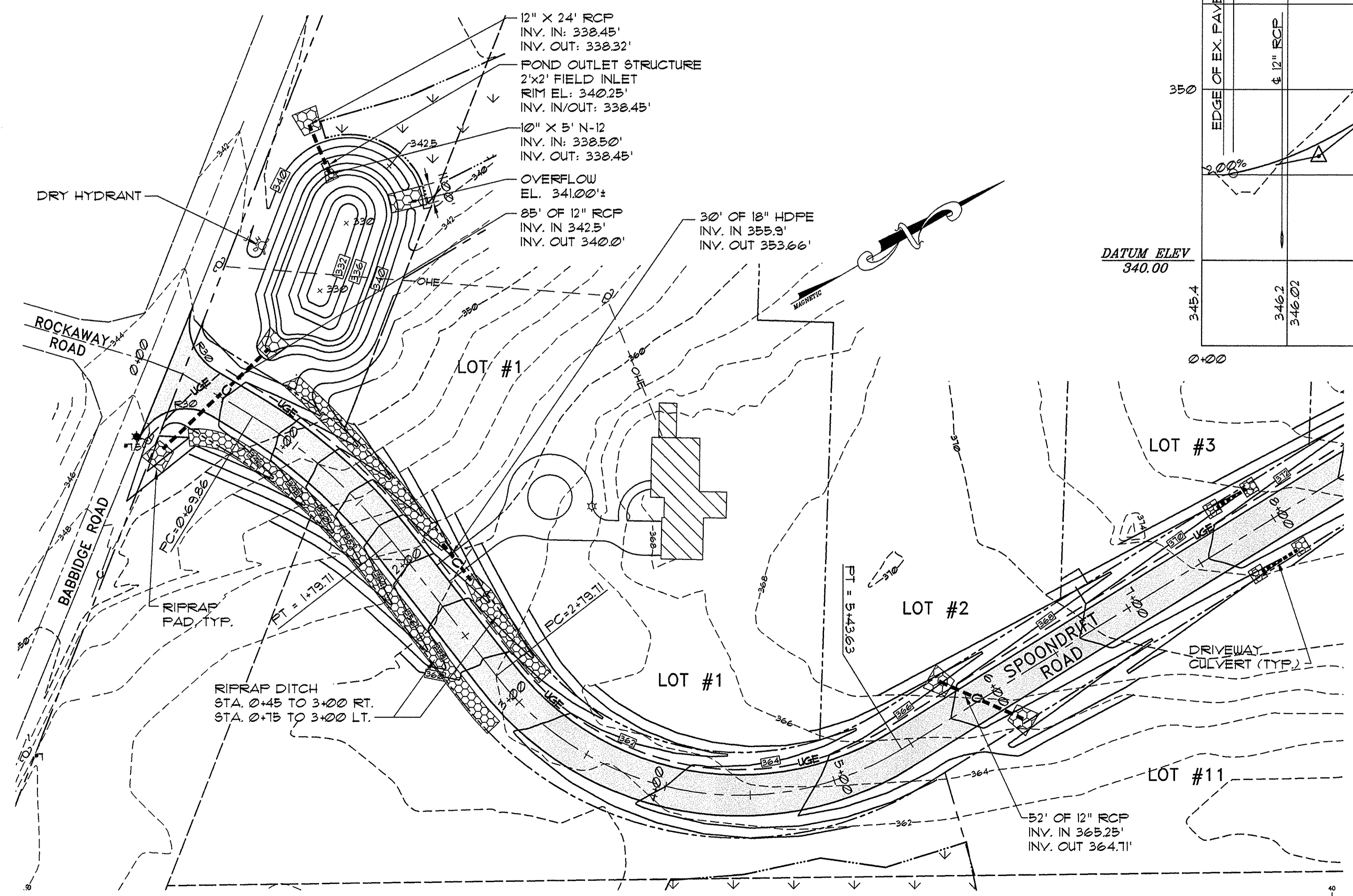
NOT TO SCALE

- LEGEND**
- EXISTING**
- PROPERTY LINE
 - ADJUTERS PROPERTY
 - EDGE OF PAVEMENT
 - CONTOURS
 - BUILDING
 - WETLAND
 - OHE OVERHEAD ELECTRIC UTILITY POLE
- DESIGNED**
- LOT LINE
 - CONSERVATION BUFFER
 - CMP TRANSFORMER
 - EASEMENT
 - EDGE OF PAVEMENT
 - CONTOURS
 - UNDERGROUND ELECTRIC
 - CULVERT
 - DRIVEWAY CULVERT
 - CENTERLINE
 - SPOT GRADE
 - RIPRAP
 - LIGHT POLE



ROAD PROFILE VIEW

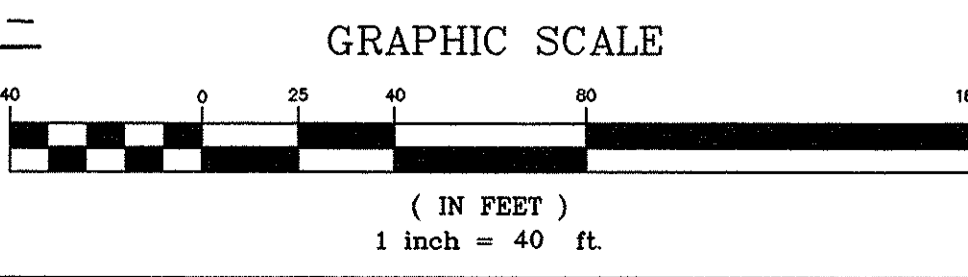
SCALE: HORIZ: 1"=40'
VERT: 1"=4'



ROAD PLAN

SCALE: 1"=40'

- NOTES:**
- ROAD TO BE SUPERELEVATED FROM STA. 2+15 TO 5+50 WITH A 25' TRANSITION
 - DRIVEWAY CULVERT
12" HDPE FOR LOT: 3
15" HDPE FOR LOT: 11
18" HDPE FOR LOT: 1



RECORD DRAWING BASED ON PERIODIC FIELD OBSERVATIONS BY STEVE S. WALKER, PINKHAM & GREER CONSULTING ENGINEERS

REV.	DATE	DESCRIPTION
1	1-08-10	PREPARE RECORD DRAWING FOR TOWN

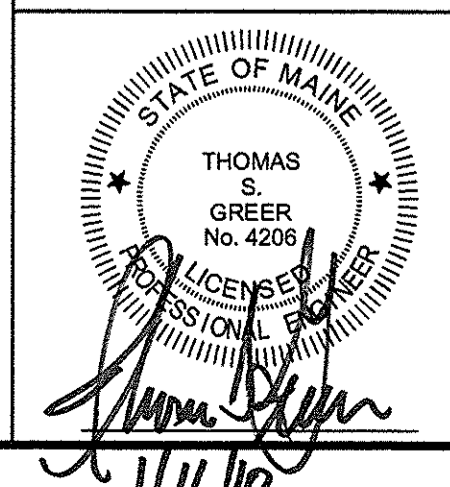
JEFFREY SOULE
SCARBOROUGH, MAINE

PINKHAM & GREER
CONSULTING ENGINEERS, INC.
FALMOUTH, MAINE

SPONDRIFF ROAD
BODKIN FARMS, FALMOUTH, MAINE

PLAN & ROAD PROFILE
STA. 0+00 TO 6+25

SCALE: AS SHOWN DRN BY: NRA/SSW/RJS
DATE: JANUARY 8, 2010 DESG BY: TSG
PROJECT: 03144 CHK BY: TSG



FILE SCALE: 1"=1' PLOT DATE: JANUARY 8, 2010 CAD FILE: 03144