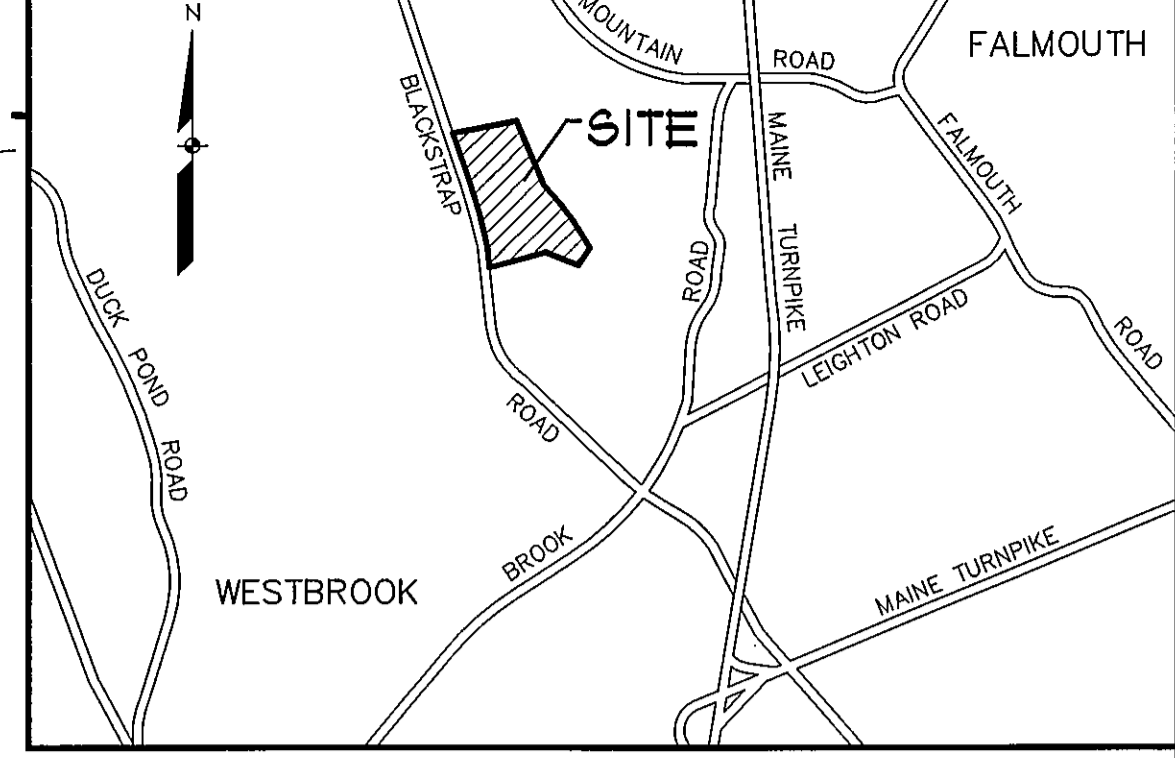
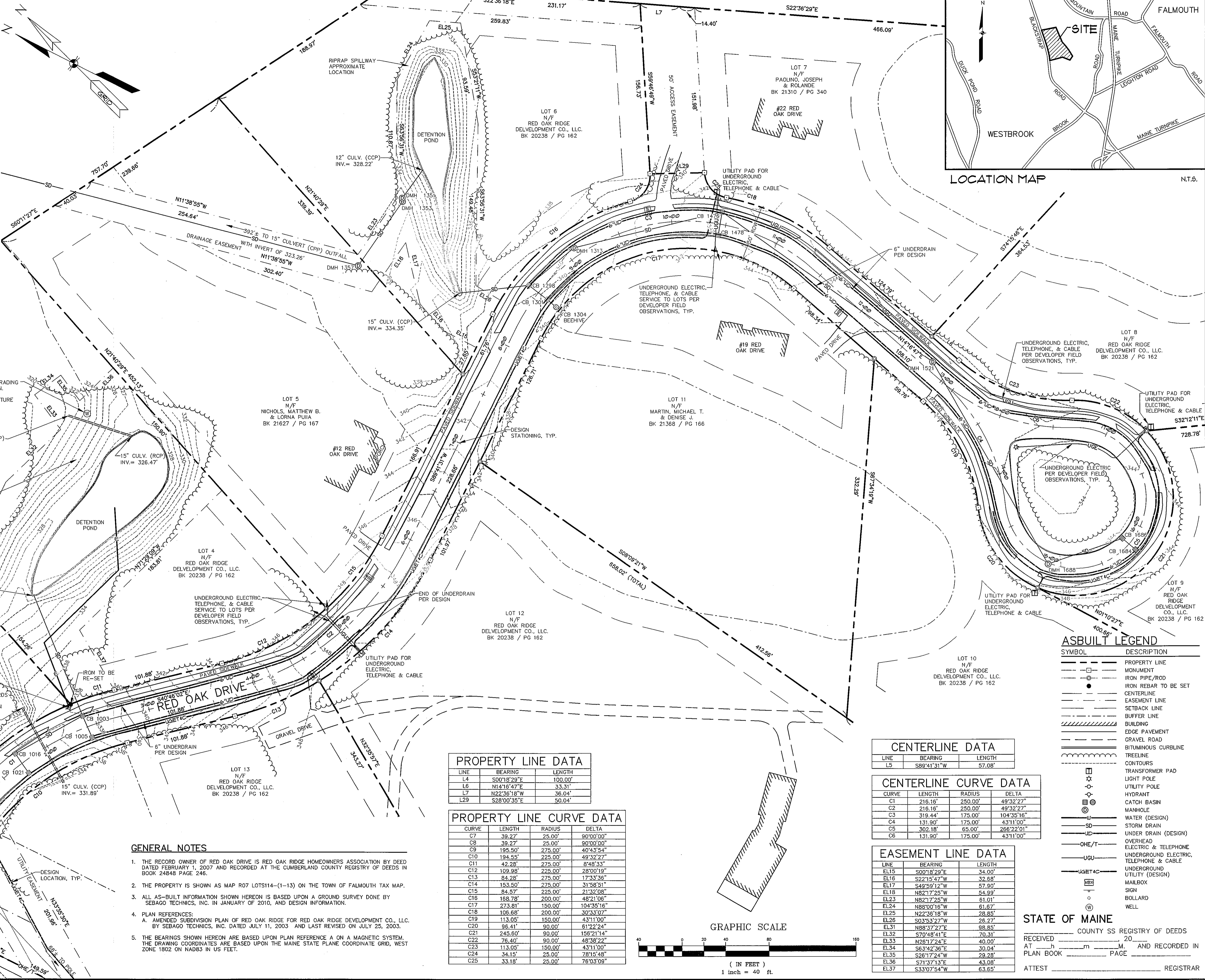


### UTILITY STRUCTURE CHART

STRUCTURE TYPE	STRUCTURE #	RM ELEVATION	INVERT ELEVATION	IV/OUT	OTHER STRUCTURE # OR DIRECTION OR (12.00' NORTH)	SIZE (INCHES)
CB	1003	337.36	332.66	0	(4.00)	6" CPP
			330.06	0	(7.00)	12" CPP
			330.06	0	(10.00)	12" CPP
			329.76	0	(13.00)	12" CPP
CB	1005	337.46	332.86	0	(4.00)	6" CPP
			330.46	0	(1.00)	12" CPP
CB	1016	336.23	330.63	0	(4.00)	12" CPP
			330.63	0	(1.00)	12" CPP
CB	1021	336.21	331.11	0	(1.00)	12" CPP
CB	1298	339.81	333.71	0	(3.00)	12" CPP
			334.81	0	(3.00)	6" CPP
			333.51	0	(6.00)	15" CPP
			333.51	0	(9.00)	18" CPP
CB	1301	339.88	334.38	0	(5.00)	6" CPP
			333.58	0	(6.00)	12" CPP
			333.53	0	(12.00)	18" CPP
CBR	1304	339.17	333.67	0	(12.00)	12" CPP
DMH	1313	340.07	333.97	0	(4.00)	12" CPP
			333.87	0	(9.00)	12" CPP
			333.87	0	(9.00)	12" CPP
OCS-DMH	1351	336.08	328.03	0	(3.00)	15" CPP
			328.08	0	0	SUMP
			333.43	0	0	FOR WALL
OCS-DMH	1353	336.18	332.13	OPEN	(3.00)	6" PVC
			328.03	0	(6.00)	15" CPP
DMH	1357	335.84	327.89	0	(12.00)	15" CPP
			327.59	0	(11.00)	15" CPP
DMH	1313	340.07	333.97	0	(4.00)	12" CPP
			333.87	0	(9.00)	12" CPP
CB	1476	341.95	338.3	0	(11.00)	6" CPP
			338.3	0	(5.00)	6" CPP
			338.6	0	(6.00)	12" CPP
			338.6	0	(7.00)	12" CPP
CB	1478	342.03	336.73	0	(5.00)	6" CPP
			337.03	0	(11.00)	6" CPP
			336.03	0	(2.00)	6" CPP
DMH	1521	345.37	336.82	0	(7.00)	12" CPP
CB	1684	343.24	338.72	0	(12.00)	12" CPP
			338.72	0	(9.00)	6" CPP
			338.64	0	(12.00)	12" CPP
CB	1686	343.38	336.38	0	(6.00)	12" CPP
			339.29	0	(10.00)	12" CPP
DMH	1688	344.07	338.17	0	(4.00)	12" CPP
			338.07	0	(1.00)	12" CPP

**PIPE MATERIAL LEGEND**  
 CPP = CORRUGATED PLASTIC PIPE  
 RCP = REINFORCED CONCRETE PIPE  
 HPDE = HIGH DENSITY POLY ETHYLENE  
 NOTE:  
 ALL CPP GREATER THAN 6" APPEARS TO BE HPDE PIPING.



STATE OF MAINE  
 REGISTERED PROFESSIONAL ENGINEER  
 MATTHEW W. EK  
 No. 2117  
 License  
 LINDSAY S. MATHIAS  
 No. 2117  
 License  
 LINDSAY S. MATHIAS  
 No. 2117  
 License

ISSUED TO TOWN FOR REVIEW  
 ISSUED TO CLIENT FOR REVIEW

REV.	BY:	DATE:	STATUS:
A	MW/E	02-10-10	ISSUED TO TOWN FOR REVIEW
B	MW/E	02-05-10	ISSUED TO CLIENT FOR REVIEW

THIS PLAN SHALL NOT BE MODIFIED WITHOUT WRITTEN PERMISSION FROM SEBAGO TECHNICS, INC. ANY ALTERATIONS, AUTHORIZED OR OTHERWISE, SHALL BE AT THE USER'S SOLE RISK AND WITHOUT LIABILITY TO SEBAGO TECHNICS, INC.

**Sebago Technics**  
 Engineering Expertise You Can Build On.  
 One Chocod Street  
 Westbrook, ME 04091-1399  
 Tel (207) 686-0277  
 www.sebagotech.com

PROJECT NO. 00522EC  
 DRAWN: MW/E  
 CHECK: MW/E  
 DESIGN: MW/E  
 FIELD BOOK: 616A

**AS-BUILT PLAN**  
 OF:  
 RED OAK RIDGE SUBDIVISION  
 RED OAK DRIVE  
 FALMOUTH, MAINE  
 FOR RECORD OWNER:  
 RED OAK RIDGE HOMEOWNERS ASSOCIATION  
 7 RED OAK DRIVE  
 FALMOUTH, MAINE 04105

RECEIVED \_\_\_\_\_ COUNTY SS REGISTRY OF DEEDS  
 DATED FEBRUARY 1, 2007 AND RECORDED AT THE CUMBERLAND COUNTY REGISTRY OF DEEDS IN BOOK 2484B PAGE 246.

DATE: 01-27-10  
 SCALE: 1"=40'

SHEET 1 OF 2

**PROPERTY LINE DATA**

LINE	BEARING	LENGTH
L4	S00°18'29"E	100.00'
L6	N41°15'47"E	33.31'
L7	N22°36'18"W	36.04'
L29	S28°00'35"E	90.04'

**PROPERTY LINE CURVE DATA**

CURVE	LENGTH	RADIUS	DELTA
C7	39.27'	25.00'	90°00'00"
C8	39.27'	25.00'	90°00'00"
C9	195.50'	275.00'	40°43'54"
C10	194.55'	225.00'	49°32'27"
C11	42.28'	275.00'	8°48'33"
C12	109.98'	225.00'	28°00'19"
C13	84.28'	275.00'	17°33'36"
C14	153.50'	275.00'	31°58'51"
C15	84.57'	225.00'	21°32'08"
C16	188.78'	200.00'	48°21'06"
C17	273.81'	150.00'	104°35'16"
C18	108.68'	200.00'	30°33'07"
C19	113.05'	150.00'	43°11'00"
C20	96.41'	90.00'	61°22'24"
C21	245.60'	90.00'	156°21'14"
C22	76.40'	90.00'	49°38'22"
C23	113.05'	150.00'	43°11'00"
C24	34.15'	25.00'	78°15'48"
C25	33.18'	25.00'	76°03'09"

**CENTERLINE DATA**

LINE	BEARING	LENGTH
L5	S89°41'31"W	57.08'

**CENTERLINE CURVE DATA**

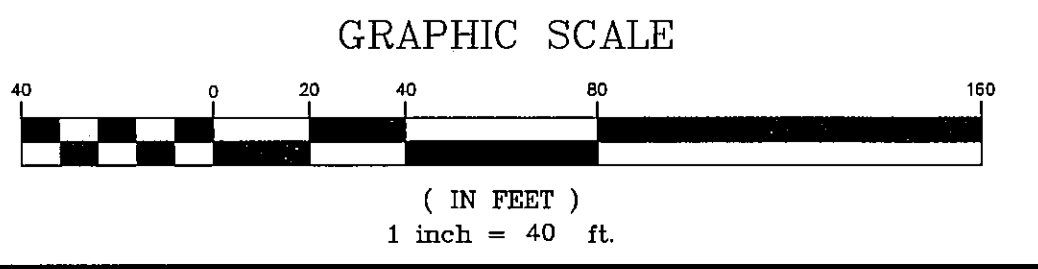
CURVE	LENGTH	RADIUS	DELTA
C1	216.16'	250.00'	49°32'27"
C2	216.16'	250.00'	49°32'27"
C3	319.44'	175.00'	104°35'16"
C4	131.90'	175.00'	43°11'00"
C5	302.18'	65.00'	266°22'01"
C6	131.90'	175.00'	43°11'00"

**EASEMENT LINE DATA**

LINE	BEARING	LENGTH
EL15	S00°18'29"E	34.00'
EL16	S22°15'47"W	32.68'
EL17	S49°59'12"W	57.90'
EL18	N82°17'25"W	54.99'
EL23	N82°17'25"W	61.01'
EL24	N89°00'18"W	61.67'
EL25	N22°36'18"W	28.85'
EL26	S03°53'27"W	26.27'
EL31	N88°37'27"E	98.85'
EL32	S70°48'41"E	70.31'
EL33	N26°17'24"E	40.00'
EL34	S63°42'36"E	39.04'
EL35	S26°17'24"W	28.21'
EL36	S71°37'13"E	43.08'
EL37	S33°07'54"W	63.65'

**ASBUILT LEGEND**

SYMBOL	DESCRIPTION
---	PROPERTY LINE
- - - -	MONUMENT
---○---	IRON PIPE/ROD
●	IRON REBAR TO BE SET
---	CENTERLINE
- - - -	EASEMENT LINE
---	SETBACK LINE
---	BUFFER LINE
---	BUILDING
---	EDGE PAVEMENT
---	GRAVEL ROAD
---	BITUMINOUS CURBLINE
---	TREELINE
---	CONTOURS
---	TRANSFORMER PAD
---	LIGHT POLE
---	UTILITY POLE
---	HYDRANT
---	CATCH BASIN
---	MANHOLE
---	WATER (DESIGN)
---	STORM DRAIN
---	UNDER DRAIN (DESIGN)
---	OVERHEAD ELECTRIC & TELEPHONE
---	UNDERGROUND ELECTRIC, TELEPHONE & CABLE
---	UNDERGROUND UTILITY (DESIGN)
---	MAILBOX
---	SIGN
---	BOLLARD
---	WELL



- GENERAL NOTES**
- THE RECORD OWNER OF RED OAK DRIVE IS RED OAK RIDGE HOMEOWNERS ASSOCIATION BY DEED DATED FEBRUARY 1, 2007 AND RECORDED AT THE CUMBERLAND COUNTY REGISTRY OF DEEDS IN BOOK 2484B PAGE 246.
  - THE PROPERTY IS SHOWN AS MAP R07 LOTS114-(1-13) ON THE TOWN OF FALMOUTH TAX MAP.
  - ALL AS-BUILT INFORMATION SHOWN HEREON IS BASED UPON A GROUND SURVEY DONE BY SEBAGO TECHNICS, INC. IN JANUARY OF 2010, AND DESIGN INFORMATION.
  - PLAN REFERENCES:  
 A. AMENDED SUBDIVISION PLAN OF RED OAK RIDGE FOR RED OAK RIDGE DEVELOPMENT CO., LLC. BY SEBAGO TECHNICS, INC. DATED JULY 11, 2003 AND LAST REVISED ON JULY 25, 2003.
  - THE BEARINGS SHOWN HEREON ARE BASED UPON PLAN REFERENCE A ON A MAGNETIC SYSTEM. THE DRAWING COORDINATES ARE BASED UPON THE MAINE STATE PLANE COORDINATE GRID, WEST ZONE 1802 ON NAD83 IN US FEET.