

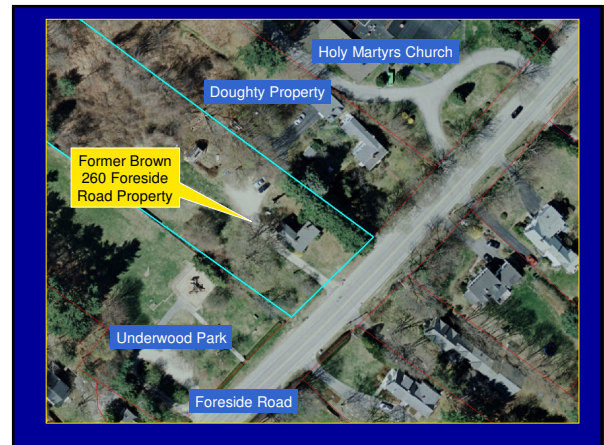
  
**COMMUNITY DISCUSSION**  
**Former Brown Property, Foreside Road**

**Monday, September 21, 2009, 6:30 - 8:30 PM**





## Zoning = Residential A ("RA")

Permitted Structures and Uses

1. Accessory Building & Uses
2. Farming
3. Forestry
4. Municipal Buildings & Uses
5. Single Family Detached Dwellings
6. Tier I Personal Wireless Service Facilities
7. Churches
8. Congregate Housing
9. Health Institutions.
10. Home Occupations
11. Libraries
12. Marinas
13. Multiplexes
14. Museums
15. Private Clubs
16. Private Schools
17. Amateur Radio Towers
18. Public Utilities
19. Bed and Breakfast Establishments
20. Elderly Boarding Home
21. Outdoor Eating Areas

Conditional Uses

1. Accessory Dwelling Units
2. Cemeteries
3. Day Care Centers
4. Day Care Homes

### RA Dimensional Standards

	Minimum Lot Size		Max. Lot Coverage	Min. net residential area per dwelling unit (sq ft)	Min. site size (acres)
	Lot Area (sq ft)	Lot Width (ft)			
All Uses	--	--	20%	--	--
Cemeteries	--	300	--	--	10
Day Care Centers	--	200	--	--	2
Churches	--	300	--	--	5
Congregate Housing	--	300	--	7,500	5
Health Institute	--	300	--	--	5
Multiplexes	--	200	--	15,000	2
Private Clubs	--	200	--	--	3
Private Schools	--	200	--	--	3
Single Family Detached & Other Uses	20,000	125	--	20,000	--

### Falmouth Anchorage

*"... the largest anchorage north of Marblehead, MA."*

*"... experience the beauty and unique character of Casco Bay and the Maine coast."*

Quotes from www.handyboatservice.com

## 2009 Anchorage Access \*

Town Landing	317 moorings
Handy Boat Service	317
Portland Yacht Club	335
<u>Other Private Access</u>	<u>197</u>
<b>Total Anchorage Access</b>	<b>1166 moorings</b>



Mooring waiting list: 112  
(incl. 76 residents)

\* Source: Falmouth Harbormaster

## Available Mooring Holder Parking



Handy Boat Service: 165 \*  
(1 space/1.9 moorings)



Portland Yacht Club: 85 \*  
(1 space/3.9 moorings)



Town Landing: 73  
(1 space/4.3 moorings)

\* Source: 2008 Falmouth Anchorage Evaluation Report

## Town Landing Parking



## Market Parking



## Underwood Parking



## Town Landing Parking

### Parking Supply

"Dock" parking lot	28
"Market" lot	22
Town Landing Road	5
Johnson Road	4
Route 88, at Underwood Park	5
Route 88, near TL Market	5
Underwood Park	4
<b>73 spaces available</b>	

### Parking Demand

317 moorings (2009), 1 space/4 moorings	79
Non-boater parking (assume 20% of available)	15
<b>94 spaces needed</b>	

**21 min. additional parking required**

