



# The Tidewater Farm Regional Learning Center Campaign: *A Collaboration for Excellence*

## Project Concept

To create an innovative public-private partnership to fund and construct a readily accessible, centrally located distance learning center in southern Maine. The Regional Learning Center will serve as an agriculturally-based training site to foster increased understanding and awareness of sustainable agricultural practices and methods, as well as promote sustainable communities and living. To be located on a 35 acre managed conservation easement in Falmouth, the Center will vastly improve outreach capabilities for the University of Maine Cooperative Extension, provide practical opportunities for collaborative partnerships with local schools and non-profit organizations having similar missions as UMaine Extension, and strengthen the delivery of programs for UMaine Extension faculty and support staff through a new and spacious state-of-the-art facility that will incorporate sustainable design principles and technologies to reduce energy consumption and operating costs.



**Conceptual Site Plan**



**New Regional Learning Center**

## Project Objectives

The capital campaign for the Tidewater Farm Regional Learning Center will accomplish several important goals:

- Raise **\$1.5 million** in new donor funds to augment a **\$400,000** lead gift from the University of Maine Cooperative Extension to construct the new Regional Learning Center at Tidewater Farm.
- Increase the ability of UMaine Extension to deliver new educational programs that contribute to sustainable living and sustainable communities.
- Engage area stakeholders to increase collaboration and support of activities involving education, community based learning, agriculture and marine research.
- Manage conservation easement activities through the new Tidewater Foundation.
- Explore and encourage increased collaborations with local non-profits by seeking opportunities to promote organic agriculture, grow demonstration crops, establish local farmer's market at the Farm, and increase public awareness and outreach within the southern Maine community.

With a collaborative public-private partnership now in place, a major capital campaign is underway to raise the resources necessary to make this vision a reality.

## Collaborating Partners

- Cumberland County Extension Association
- Tidewater Conservation Foundation
- University of Maine Cooperative Extension

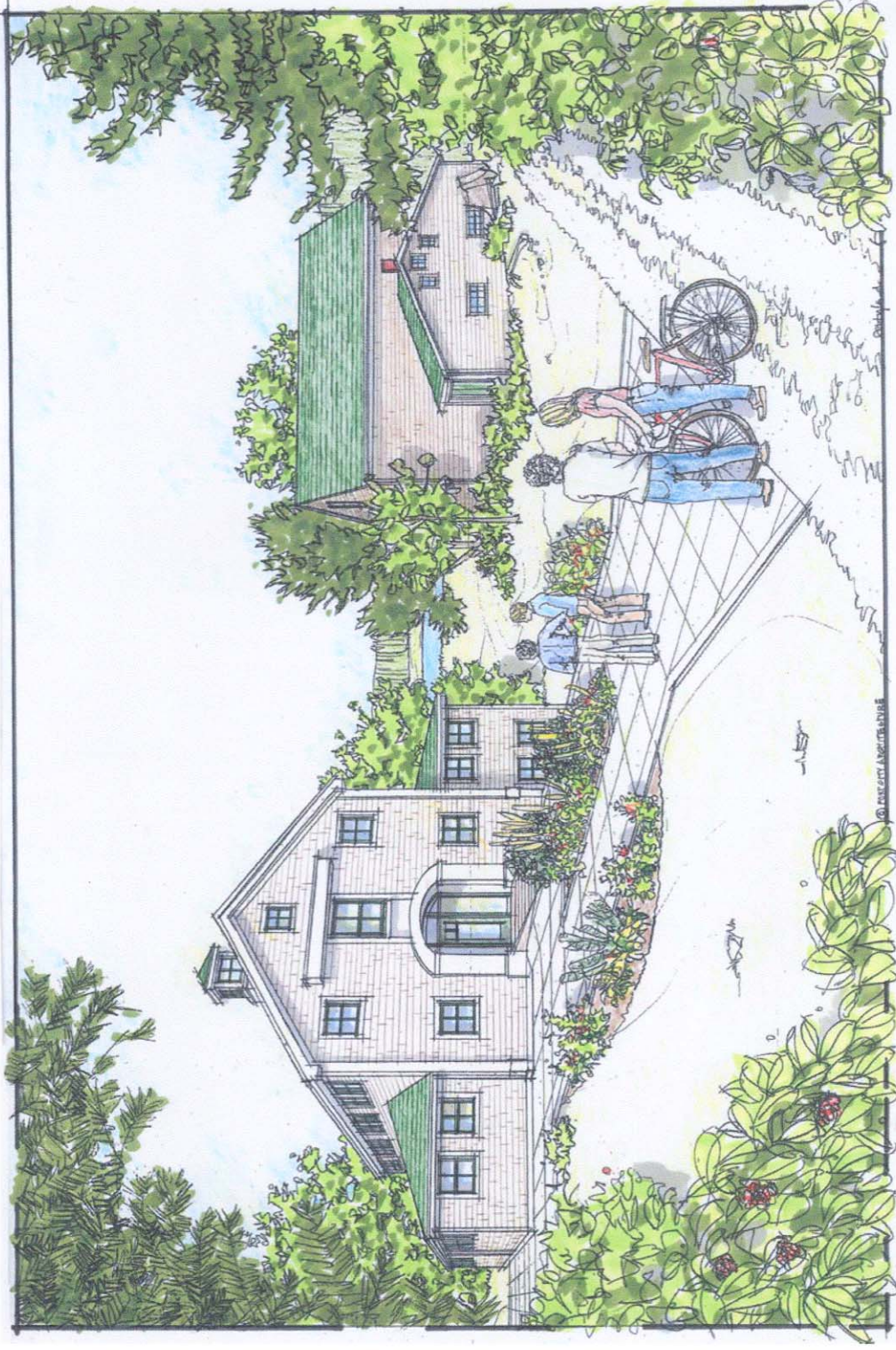


**Proposed Building Elevations**



# TIDEWATER FARMS

A REGIONAL LEARNING CENTER



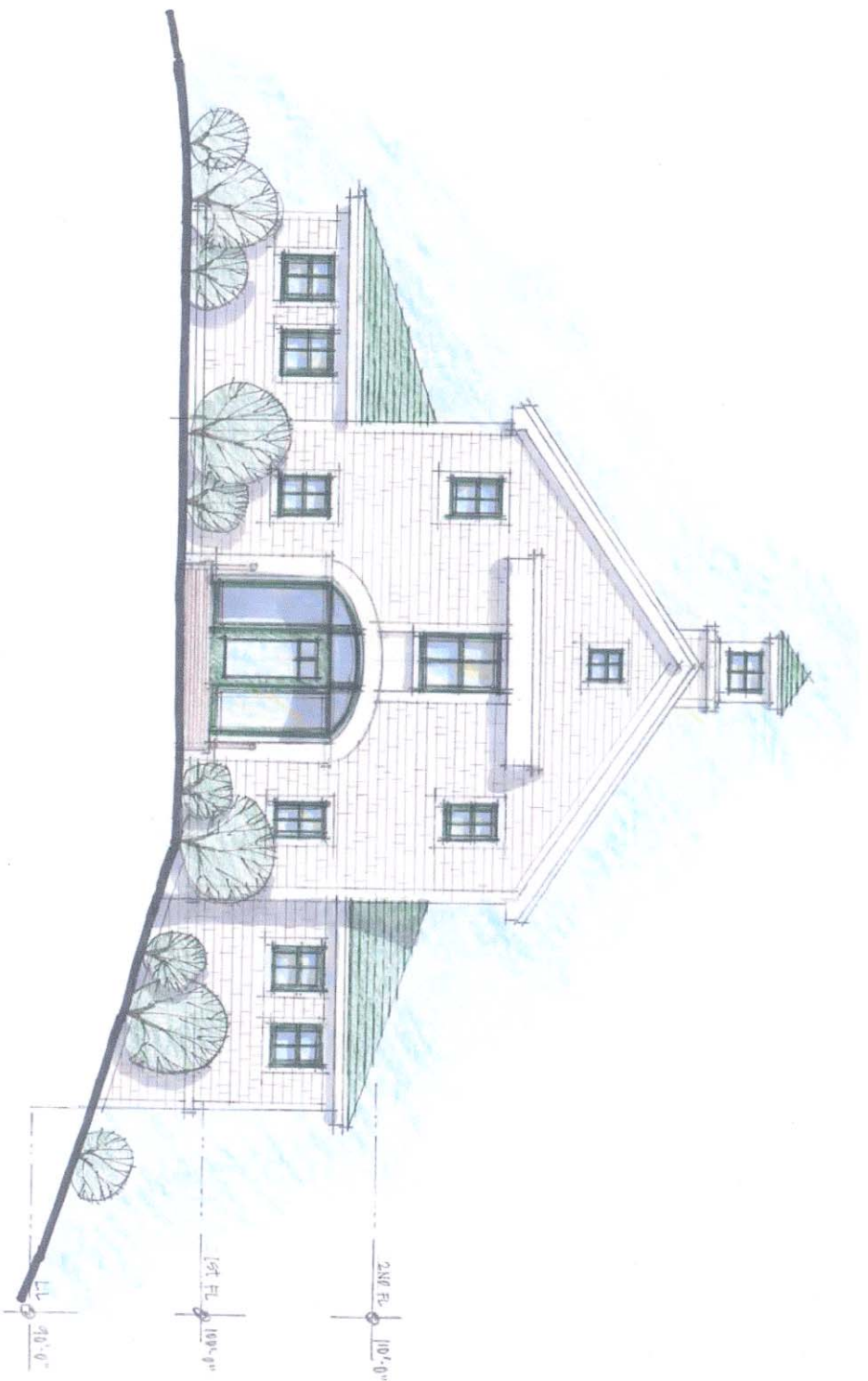
PROPOSED FACILITY FOR CUMBERLAND  
COUNTY COOPERATIVE EXTENSION



PORT CITY  
ARCHITECTURE  
[www.portcityarch.com](http://www.portcityarch.com)

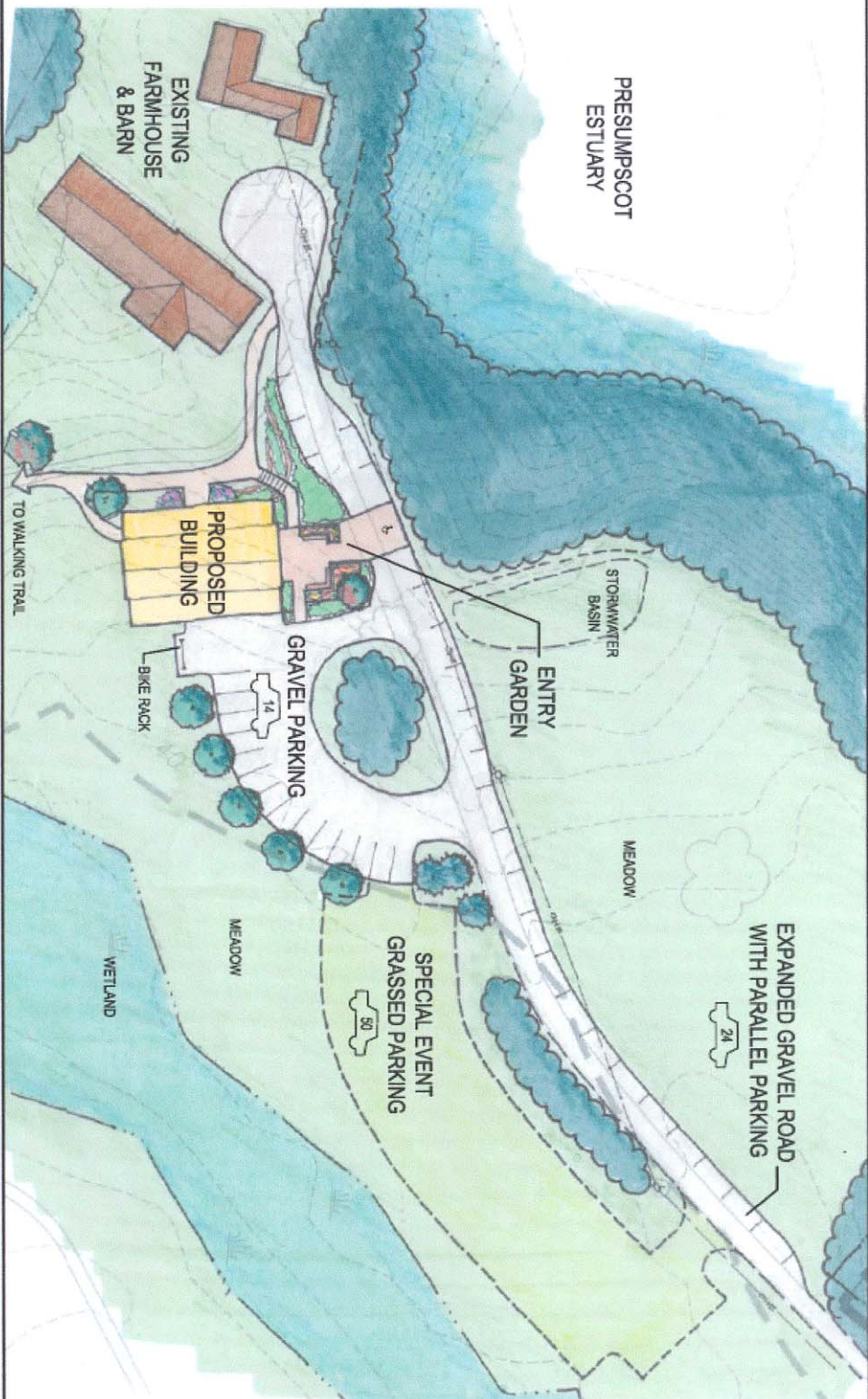
# TIDEWATER FARMS

## A REGIONAL LEARNING CENTER



FRONT ELEVATION





GRAPHIC SCALE



## CONCEPTUAL SITE PLAN

Learning Resource Center  
Tidewater Farm - Falmouth, Maine  
SEPTEMBER 2006 SHEET 1 OF 1



**DeLUCA-HOFFMAN ASSOCIATES, INC.**  
Consulting Engineers  
778 Main Street, Suite 8  
South Portland, Maine 04106  
(207) 775-1121