



Town of Enfield

Planning Board
74 Lockehaven Road
Enfield, New Hampshire 03748
VOICE 603-632-4067 * ext 5427 FAX 603-632-7391
EMAIL sosgood@enfield.nh.us

ENFIELD PLANNING BOARD MEETING AGENDA November 18, 2015 - 7:00 PM **Revised Nov 13, 2015**

- I. CALL MEETING TO ORDER
- II. APPROVAL OF MINUTES – Oct. 28, 2015
- III. SELECTMEN'S REPORT
- IV. CITIZENS FORUM
- V. PUBLIC HEARING
 - 1) Boundary Line Adjustment 431 & 447 Methodist Hill Rd between lots 2-27 and 2-27-1
 - 2) Public Hearing for a Town Warrant Article regarding a change to the Zoning Regulations regarding solar energy.
 - 3) Public hearing to consider changes to the Enfield Subdivision Regulations
- VI. Conceptual Hearing**
 - 1) Revised Parking at Greeley House**
- VII. BUSINESS DISCUSSIONS
 - 1) Discussion on Engineering Review on Enfield Street Design Classification
 - 2) Sign off on JB Autoworx and Tire SPR conditions
 - 3) Sign off on Berube BLA Conditions
- VIII. COMMUNICATION
- IX. INFORMATIONAL ITEMS
- X. NEXT MEETING
 - a. Regular Planning Board Meeting –December 9, 2015
- XI. ADJOURNMENT

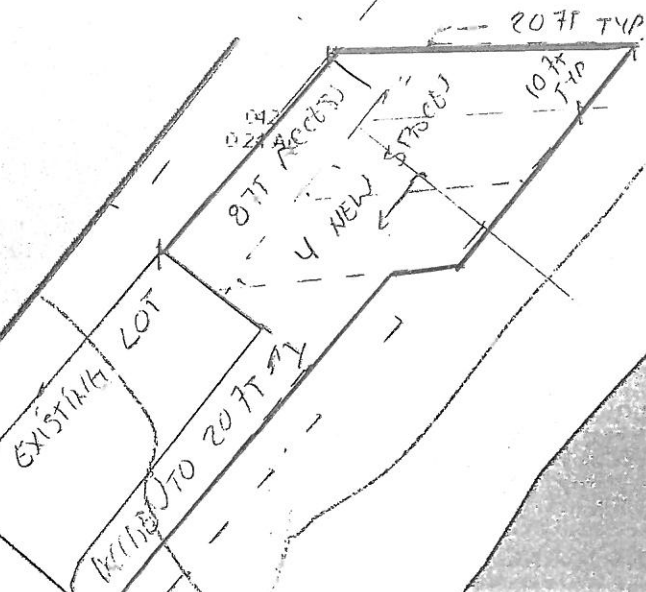
9-1-2015 d/f

045
0.308 Ac

041
0.232 Ac

MAIN

CHAIN LINK
FENCE LINE
↓



PARKING CONCEPT
DSU 9/3/15

780.696



Greely House Revised Site Plan
Enfield, NH
 1 Inch = 20 Feet
 September 01, 2015



Data shown on this map is provided for planning and informational purposes only. The municipality and CAI Technologies are not responsible for any use for other purposes or misuse or misrepresentation of this map.

www.cai-tech.com
CAI Technologies

GEOPAVE® STABILIZED AGGREGATE

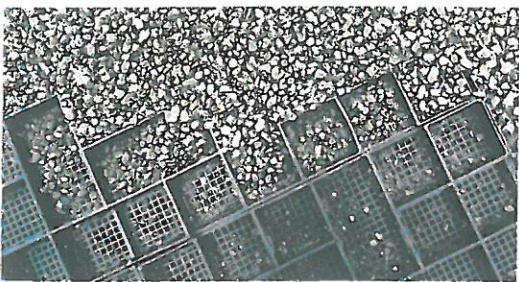


■ STABILIZED AGGREGATE PAVEMENTS

The **GEOPAVE® Porous Pavement System** offers an economical way to confine and stabilize open-graded aggregate for highly-porous pavements. This system reduces stormwater runoff, stores stormwater on-site naturally and is a low-cost, durable option with low maintenance.

■ STRUCTURAL FRAMEWORK

GEOPAVE® units hold open-graded base course (OGBC) in place through a unique herringbone cell pattern and monolithic mesh bottom. Using beam discontinuity through use of the herringbone pattern and unique "mouse holes", the GEOPAVE® system was developed specifically for gravel infill and is proven not to lift up like some aggregate paver systems.



GEOPAVE® Key Applications

- Emergency & Utility Access Lanes
- Porous Roadways & Parking Areas
- Road Shoulders
- Trails & Pedestrian Walkways
- Golf Cart Pathways, Medians, Shoulders
- Barrier-Free ADA Access



■ GEOPAVE® ADVANTAGES

GEOPAVE® pavements are designed for maximum load transfer and support, resistance to traffic stresses, maximum infill stabilization and stormwater storage.

- Performs to an H-20 loading with minimal base.
- Reduces overall installation costs by requiring far less depth of base than lighter-weight or rolled systems.
- Resists movement or breakage from vehicle turning stresses and torsional loads.
- Benefits of integral mesh-bottom:
 - Stronger than glued-on fabric solutions
 - Prevents "lifting" effect of granular fill migration
 - Creates "snowshoe effect", spreads loads

