

LIST OF DRAWINGS

	MECHANICAL
00.0 COVER SHEET	
Civil	SK-H1 HVAC - FIRST FLOOR
C1.1 SITE PLAN	SK-H2 HVAC - SECOND FLOOR
	SK-H3 HVAC - ROOF/ATTIC
ARCHITECTURAL	ELECTRICAL
A2.1 FLOOR AND ROOF PLANS	SK-E1 ELECTRICAL POWER AND COMMUNICATIONS SITE PLAN
A3.1 EXTERIOR ELEVATIONS	SK-E2 ELECTRICAL FLOOR PLAN - POWER/SECURITY
A3.2 BUILDING AND WALL SECTIONS	
STRUCTURAL	
SK-S1 FOUNDATIONS	
SK-S2 SECOND FLOOR FRAMING	
SK-S3 ROOF FRAMING	
SK-S4 BUILDING SECTION	
SK-SW1 WATERFRONT PLAN	
PLUMBING	
SK-P1 PLUMBING FIRST FLOOR	
SK-P2 PLUMBING SECOND FLOOR	

USCG PROJECT No. 01-3441233
BWA PROJECT No. 2914C

MENEMSHA BOATHOUSE REPLACEMENT

US Coast Guard Station Menemsha
Martha's Vineyard MA, 02139

OWNERS:
**UNITED STATES COAST GUARD
SHORE MAINTENANCE COMMAND
915 SECOND AVENUE, ROOM 2664
SEATTLE WA, 98174**

ARCHITECT:
BAKER / WOHL ARCHITECTS
132 LINCOLN ST. # 4
BOSTON, MA 02111
TEL: 617 . 350 . 7420
FAX: 617 . 350 . 5383



MECHANICAL, ELECTRICAL
AND STRUCTURAL
ENGINEERING:

FAY SPOFFORD & THORNDIKE
5 BURLINGTON WOODS
BURLINGTON, MA 01803
TEL: 781.221.1000
FAX: 781.229.1115

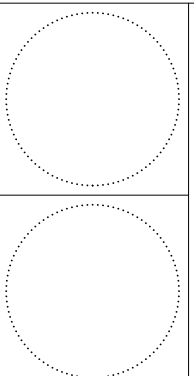
CIVIL ENGINEERING:

LANGAN ENGINEERING & ENVIRONMENTAL SERVICES
555 LONG WHARF DRIVE
NEW HAVEN, CT 06511
TEL: 203.562.5771
FAX: 203.789.6142

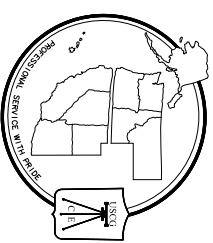
DATE: **16 SEPTEMBER 2011**

**15% CONSTRUCTION DRAWINGS
NOT ISSUED FOR CONSTRUCTION**

CONSULTANTS



UNITED STATES COAST GUARD
FACILITIES DESIGN AND
CONSTRUCTION CENTER



DETACHMENT SEATTLE
915 SECOND AVENUE, ROOM 2664
SEATTLE, WASHINGTON 98174-1011

ISSUE	MARK	DATE	DESCRIPTION

A/E PROJECT NO.:
CAD FILE NAME: 2914C - AX.XX Cover Sheet.dwg
DESIGNED BY: JT
DRAWN BY: JT
EDITED BY: CDB
CHECKED BY: CDB
SCALE: AS NOTED (0-size)

SHEET TITLE
**BOATHOUSE REPLACEMENT
MENEMSHA
MARTHA'S VINEYARD MA**

ARCHITECTURAL
COVER SHEET

REVIEWED BY: REVIEWED BY: REVIEWED BY:

PROJECT EIC DISCIPLINE TECH DIRECTOR

DATE: 16 Sep 2011

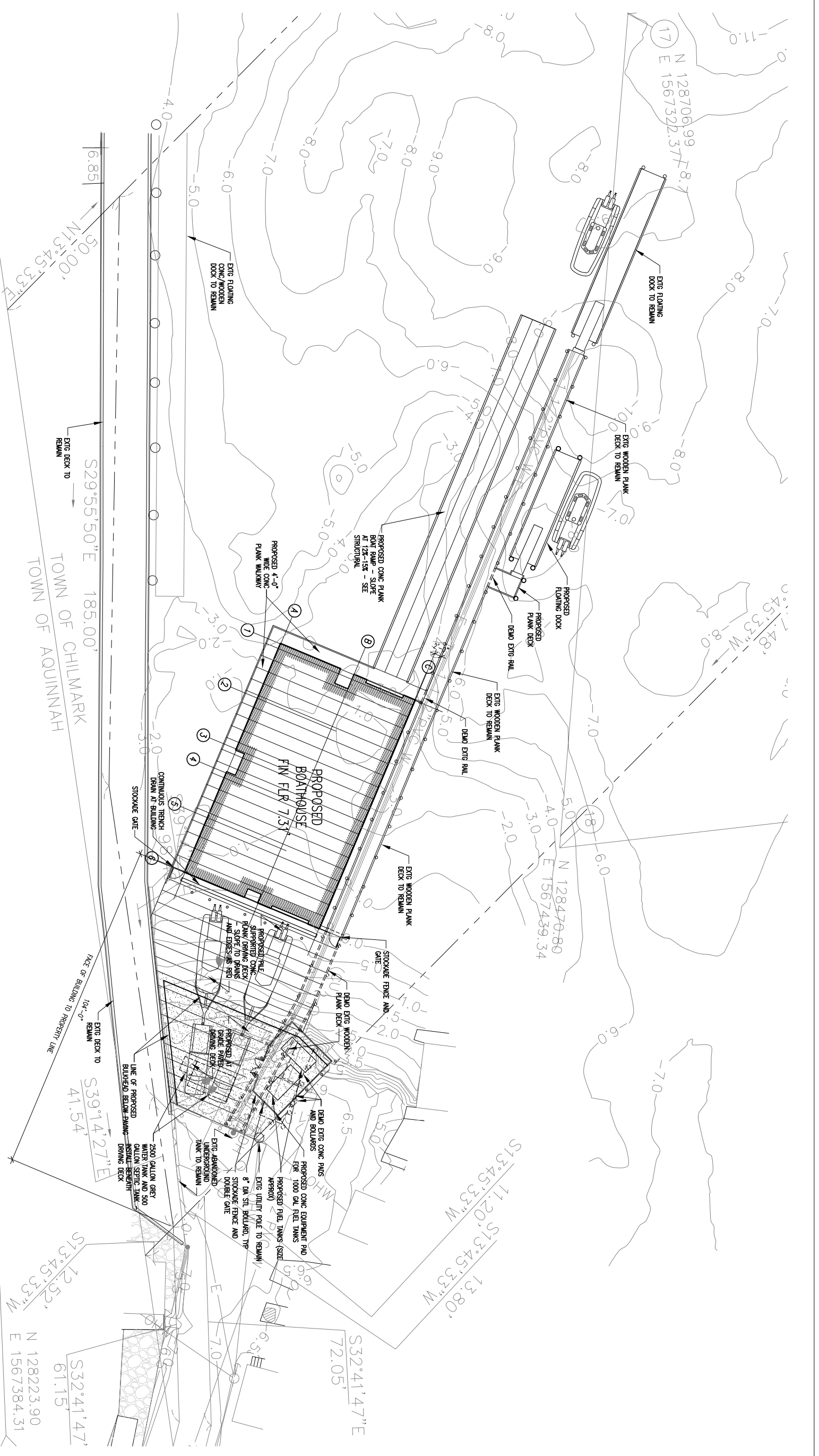
TEAM LEADER

PROJECT NUMBER DRAWING NUMBER

01 - 3441233 G0.0

DISCIPLINE/SHT NO SHEET n OF N

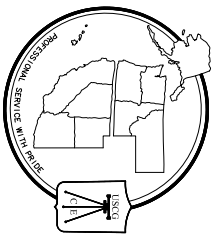
D00 SHEET n OF N



1 SITE PLAN
SCALE: 1/16" = 1'-0"

CONSULTANTS

UNITED STATES COAST GUARD
FACILITIES DESIGN AND
CONSTRUCTION CENTER



DETACHMENT SEATTLE
915 SECOND AVENUE, ROOM 2664
SEATTLE, WASHINGTON 98174-1011

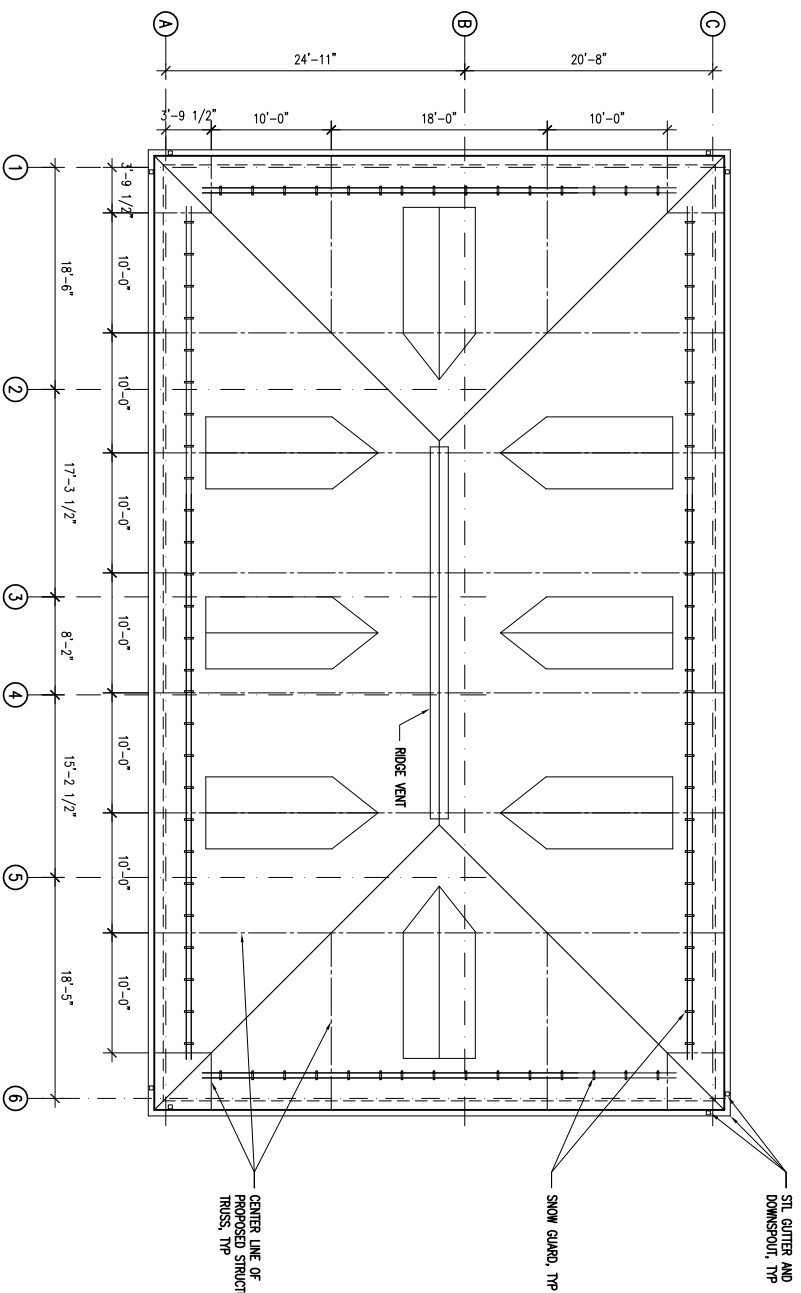
MARK	DATE	DESCRIPTION

A/E PROJECT NO:
CAD FILE NAME: 2914C - C1.1 Site Plan.dwg
DESIGNED BY: JT/TM
DRAWN BY: JT/TM
EDITED BY: CDB
CHECKED BY: CDB
SCALE: AS NOTED (0-size)
SHEET TITLE
BOATHOUSE REPLACEMENT
MENEMSHA
MARTHAS VINEYARD MA

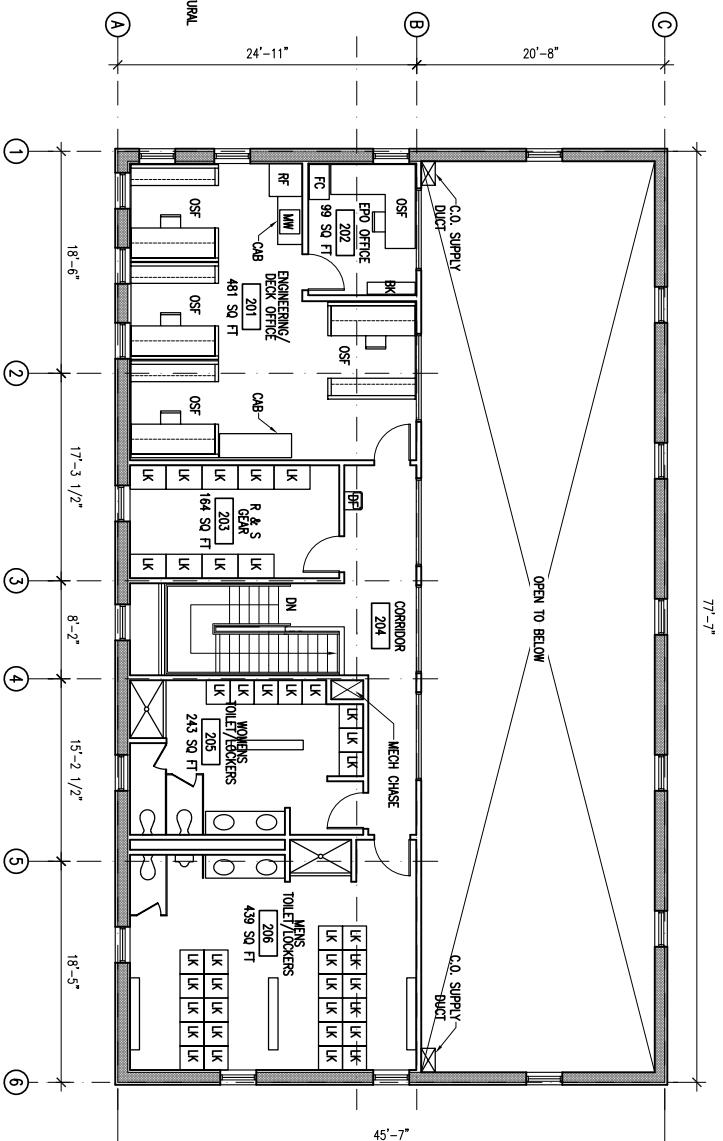
CIVIL
SITE PLAN

REVIEWED BY:	REVIEWED BY:	REVIEWED BY:
PROJECT EIC	DISCIPLINE	TECH DIRECTOR
TEAM LEADER	DATE	
PROJECT NUMBER	DRAWING NUMBER	
01-3441233	C1.1	
DISCIPLINE/SHT NO	SHEET	OF N
D00	n	N





3 ROOF PLAN
SCALE: 1/8"=1'-0"



2 SECOND FLOOR PLAN
SCALE: 1/8"=1'-0"

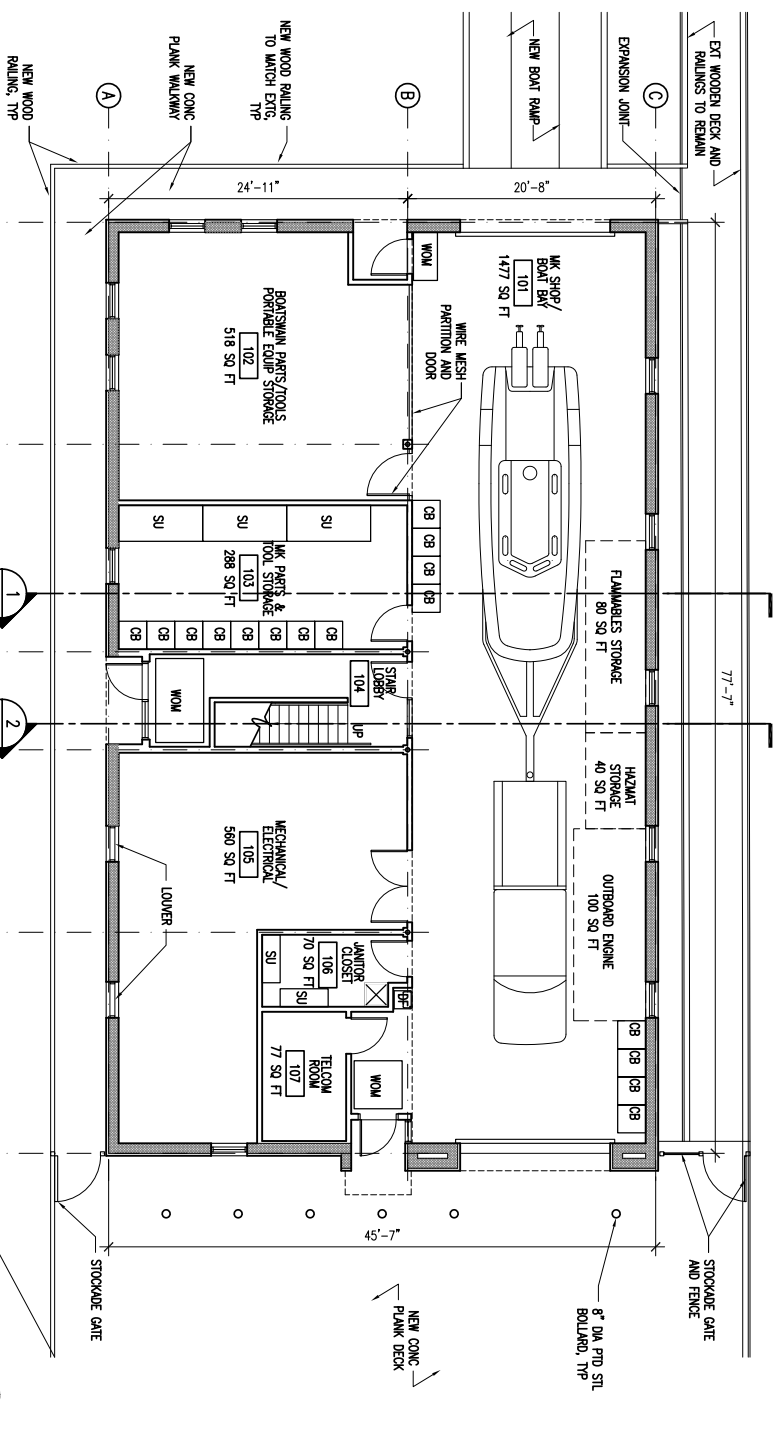
MEMENSHA BOATHOUSE				
ROOM #	SPACE NAME	REQUIRED (NET SQ FT)	PROPOSED (NET SQ FT)	DIFFERENCE (NET SQ FT)
101	MK SHIP	600 SQ FT		
101	BOAT BAY	600 SQ FT		
101	OUTBOARD ENGINE TEST	100 SQ FT	1477 SQ FT	+ 57 SQ FT
101	FLAMMABLES STORAGE	80 SQ FT		
101	HAZARD STORAGE	40 SQ FT		
102	BOATSMAN PARTS/TOOLS	300 SQ FT	518 SQ FT	- 32 SQ FT
102	PORTABLE EQUIPMENT STORAGE	250 SQ FT		
103	MK PARTS AND TOOL STORAGE	300 SQ FT	288 SQ FT	- 12 SQ FT
105	MECHANICAL/ELECTRICAL ROOM	190 SQ FT	560 SQ FT	+ 370 SQ FT
106	JUNIOR CLOSET	60 SQ FT	70 SQ FT	+ 10 SQ FT
107	TELECOMMUNICATIONS (TELCOM) ROOM	77 SQ FT	77 SQ FT	0 SQ FT
FIRST FLOOR NET AREA		2,597 SQ FT	2,990 SQ FT	+ 393 SQ FT

SECOND FLOOR				
SPACE NAME	REQUIRED (NET SQ FT)	PROPOSED (NET SQ FT)	DIFFERENCE (NET SQ FT)	
ENGINEERING/DECK OFFICE	480 SQ FT	481 SQ FT	+ 1 SQ FT	
EPO OFFICE	75 SQ FT	99 SQ FT	+ 24 SQ FT	
RESERVE AND SURVIVAL (R&S) GEAR	150 SQ FT	164 SQ FT	+ 14 SQ FT	
WET ROOM LOCKERS (M&F)	450 SQ FT	682 SQ FT	+ 32 SQ FT	
WET ROOM TOILETS (M&F)	200 SQ FT			
SECOND FLOOR NET AREA		1,355 SQ FT	1,423 SQ FT	+ 71 SQ FT

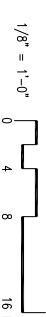
BUILDING TOTALS			
SECOND FLOOR NET AREA	3,952 SQ FT	4,413 SQ FT	+ 464 SQ FT

LEGEND

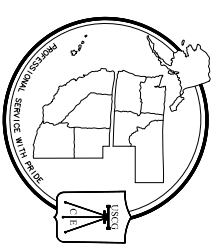
- CB - STORAGE CABINET
- SU - SEATING UNIT
- MW - MESS TABLE
- MW - MESSWAVE
- RF - REFRIGERATOR
- BK - BOOKSHELF
- FC - FILE CABINET
- OSF - OFFICE SYSTEMS FURNITURE
- CB8 - CABINET
- LK - LOCKER
- LF - DRINKING FOUNTAIN



1 FIRST FLOOR PLAN
SCALE: 1/8"=1'-0"



UNITED STATES COAST GUARD
FACILITIES DESIGN AND
CONSTRUCTION CENTER



DETACHMENT SEATTLE
915 SECOND AVENUE, ROOM 2664
SEATTLE, WASHINGTON 98174-1011

MARK	DATE	DESCRIPTION

A/E PROJECT NO.:
CAD FILE NAME: 2914C - A2.1 Floor Plans.dwg
DESIGNED BY: JT
DRAWN BY: JT
EDITED BY: CDB
CHECKED BY: CDB

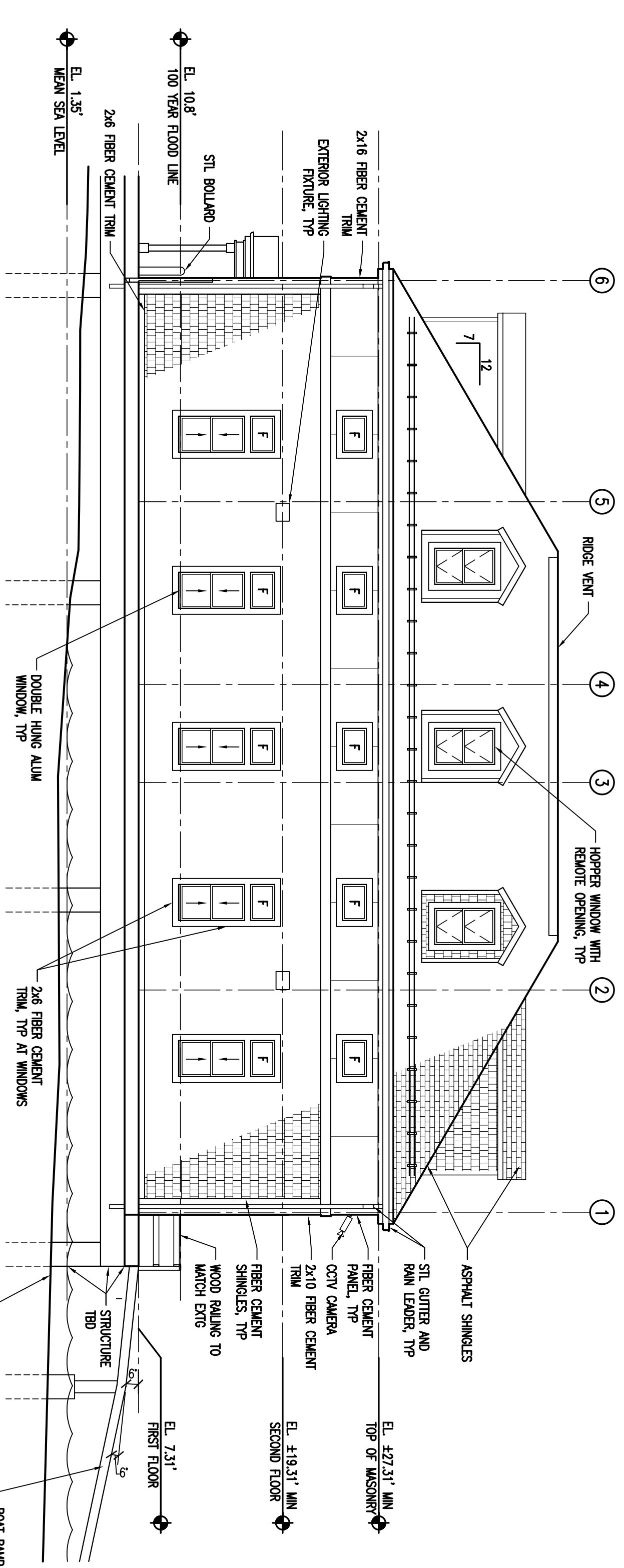
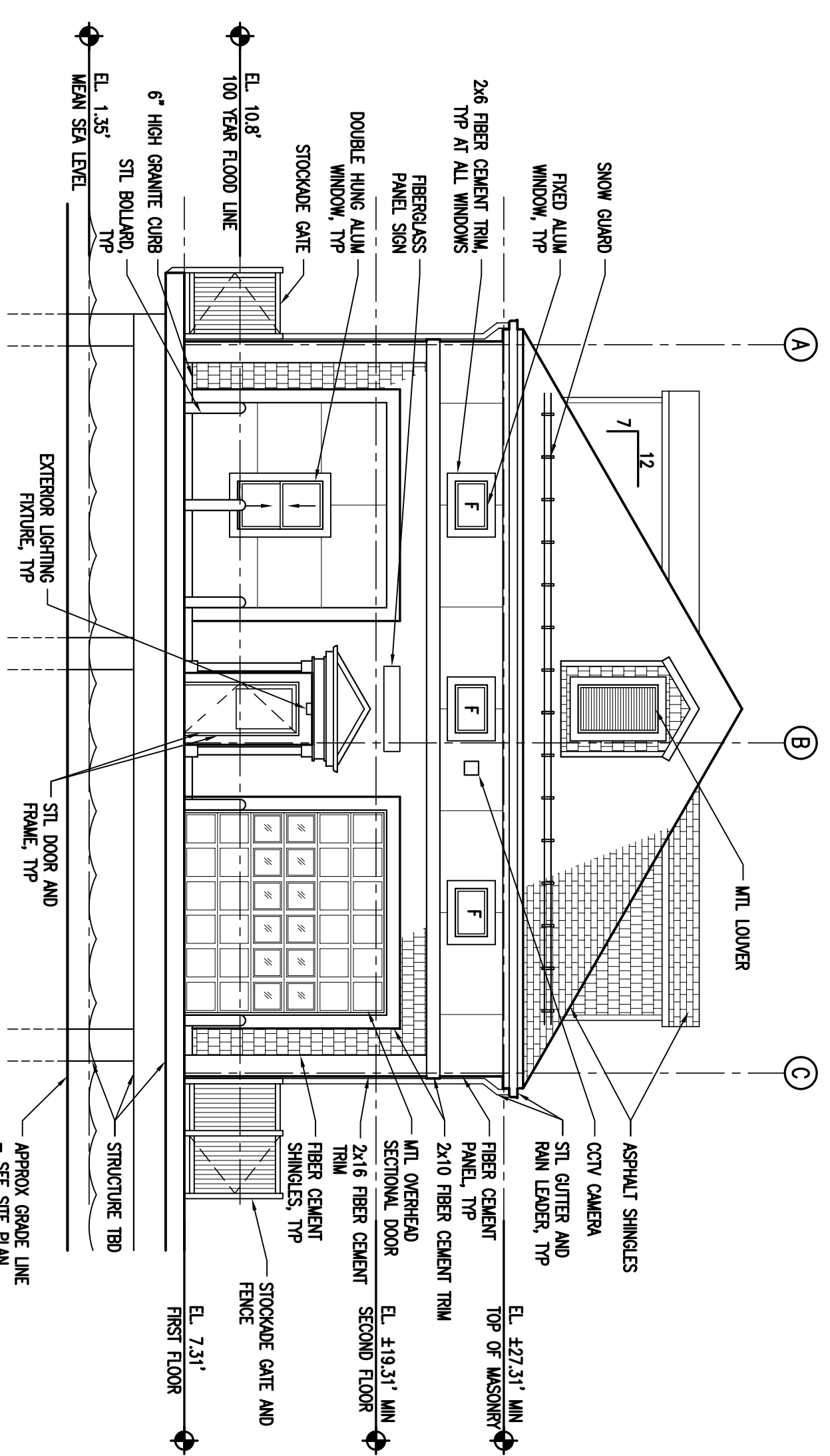
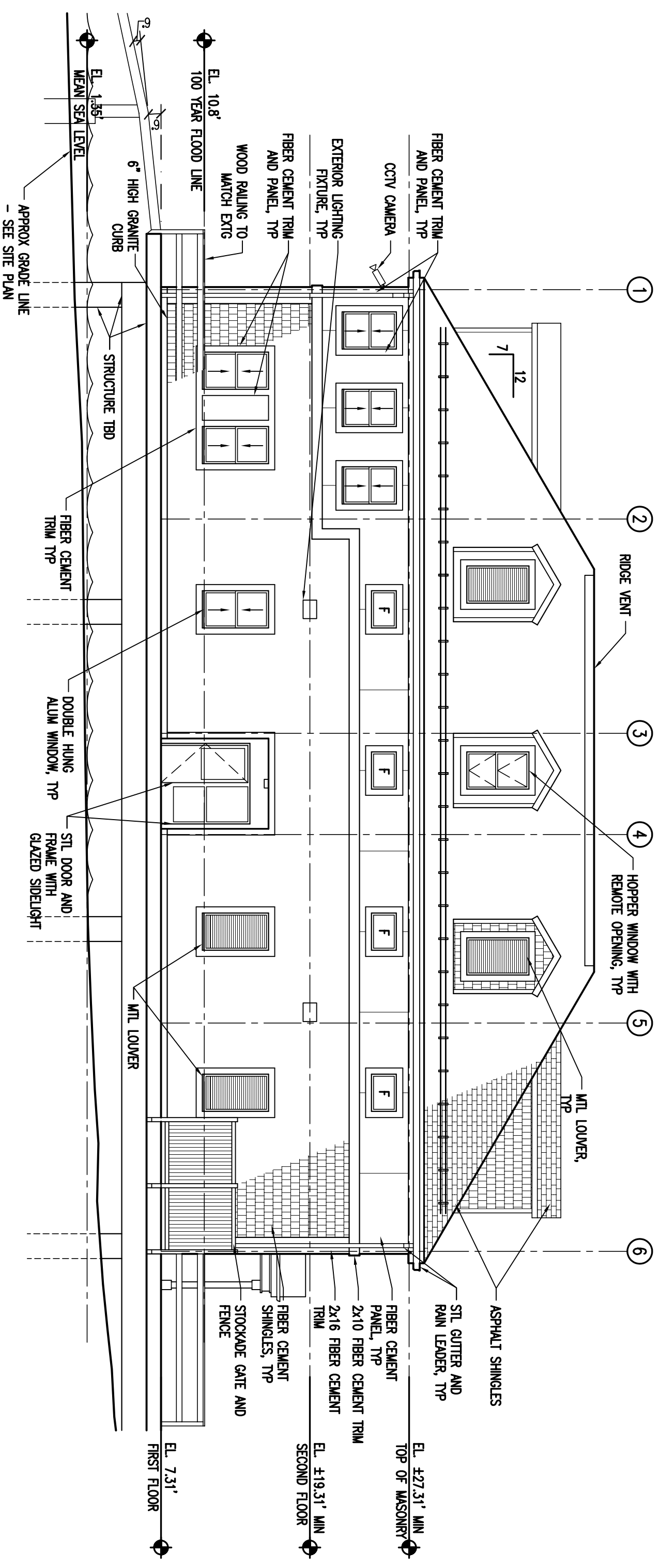
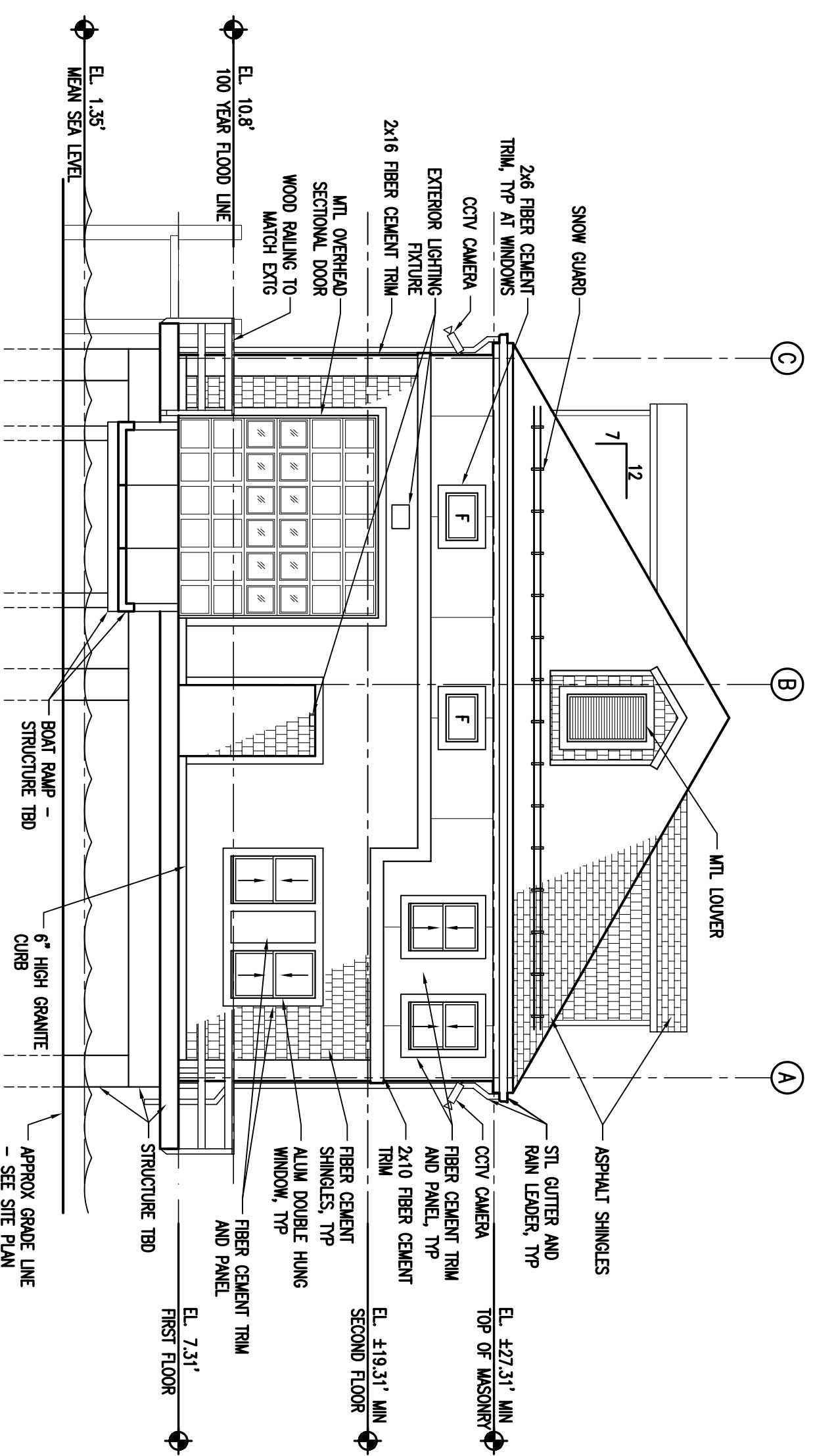
SCALE: AS NOTED (0-size)
SHEET TITLE
BOATHOUSE REPLACEMENT
MEMENSHA
MARTHA'S VINEYARD MA

ARCHITECTURAL
FLOOR AND ROOF PLANS

REVIEWED BY:	REVIEWED BY:	REVIEWED BY:
PROJECT EIC	DISCIPLINE	TECH DIRECTOR

TEAM LEADER	DATE
PROJECT NUMBER	16 Sep 2011
DRAWING NUMBER	

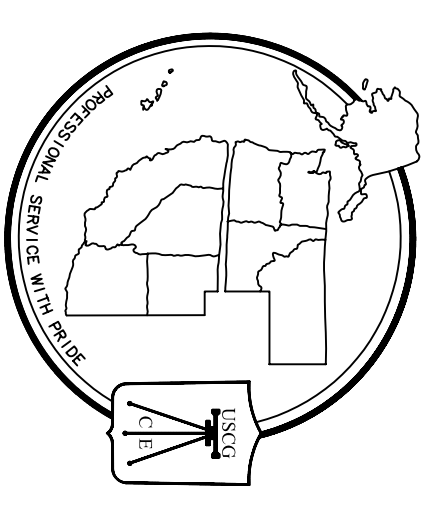
DISCIPLINE/SHT NO	SHEET n OF N
01-3441233	A2.1
D00	



SHEET NOTES

1. EXTERIOR FIBER CEMENT SHINGLES, FIBER CEMENT TRIM, AND FIBER CEMENT PANELS ARE TO BE WHITE
2. EXTERIOR ASPHALT ROOFING SHINGLES ARE TO BE RED

CONSULTANTS	



DETACHMENT SEATTLE
915 SECOND AVENUE, ROOM 2664
SEATTLE, WASHINGTON 98174-1011

ISSUE	DATE	DESCRIPTION

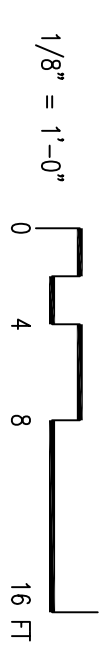
A/E PROJECT NO.:
CAD FILE NAME: 2914C - A3.1 Elevations.dwg
DESIGNED BY: JT
DRAWN BY: JT
EDITED BY: CDB
CHECKED BY: CDB

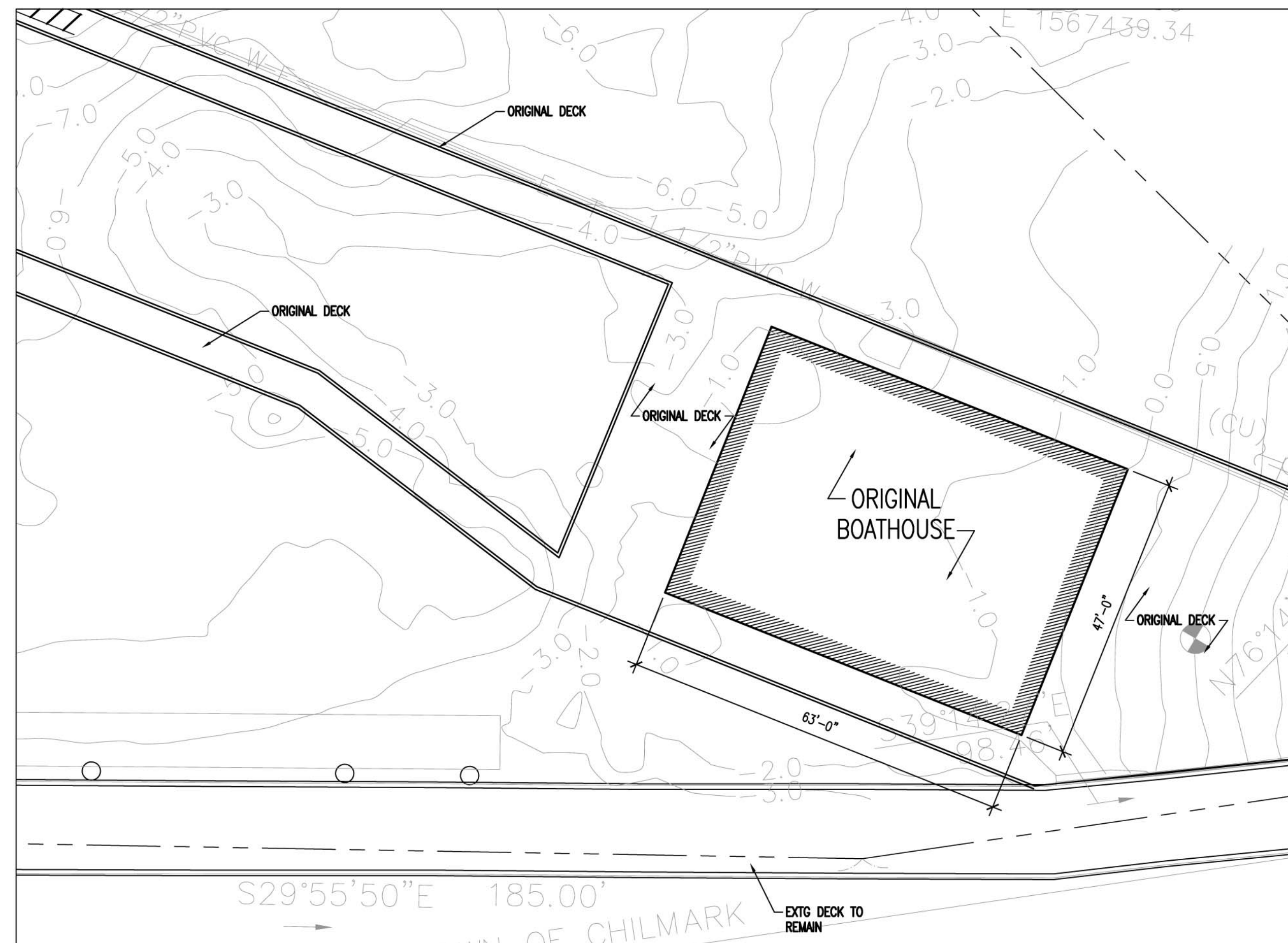
SCALE: AS NOTED (0-size)
SHEET TITLE
BOATHOUSE REPLACEMENT
MENEMSHA
MARTHA'S VINEYARD
MA

ARCHITECTURAL
EXTERIOR ELEVATIONS

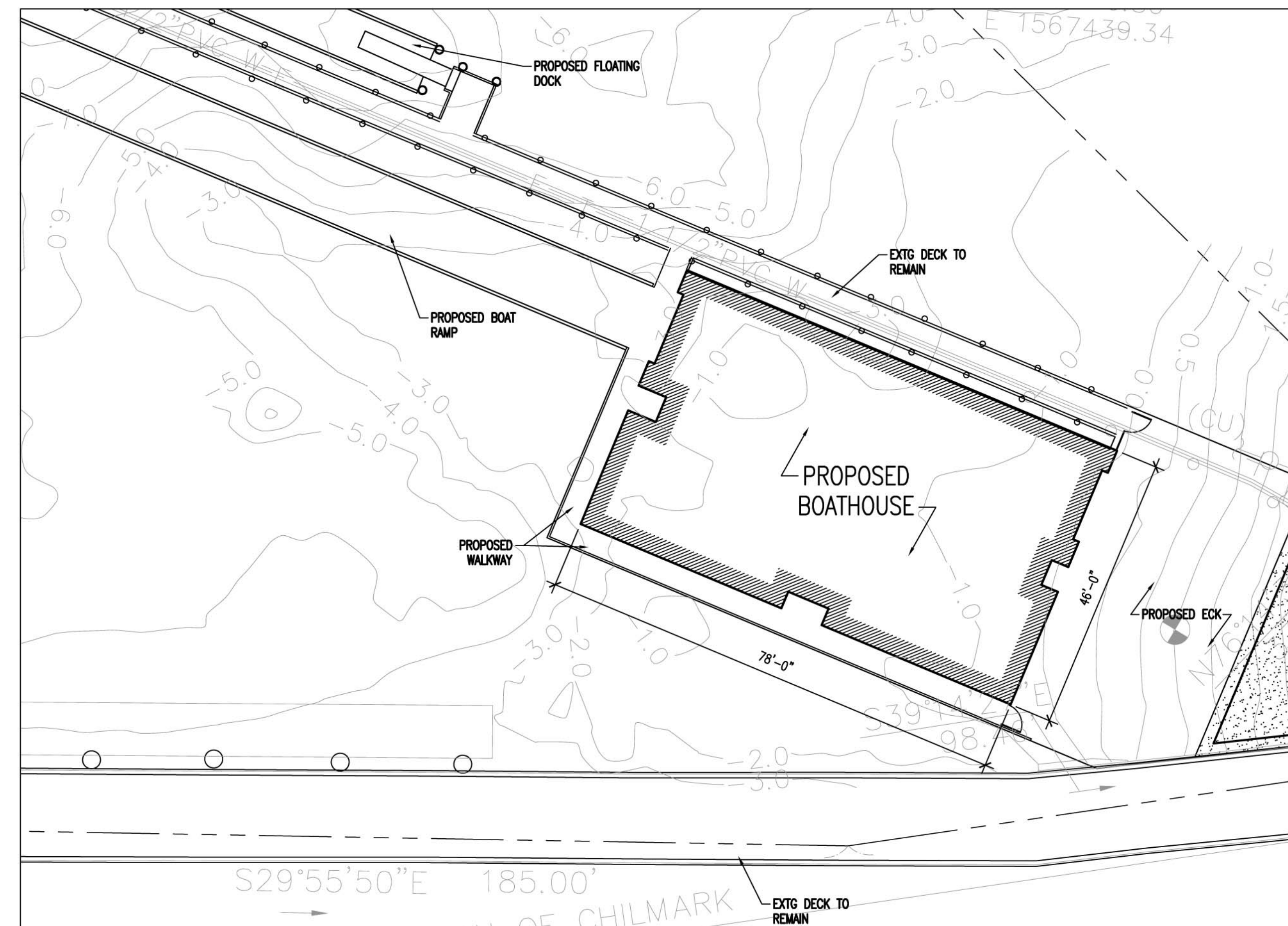
REVIEWED BY:	REVIEWED BY:	REVIEWED BY:
PROJECT EIC	DISCIPLINE	TECH DIRECTOR
		28 Sep 2011
TEAM LEADER	DATE	
PROJECT NUMBER	DRAWING NUMBER	

01-3441233	A3.1
DISCIPLINE/SHT NO	SHEET n OF N
D00	

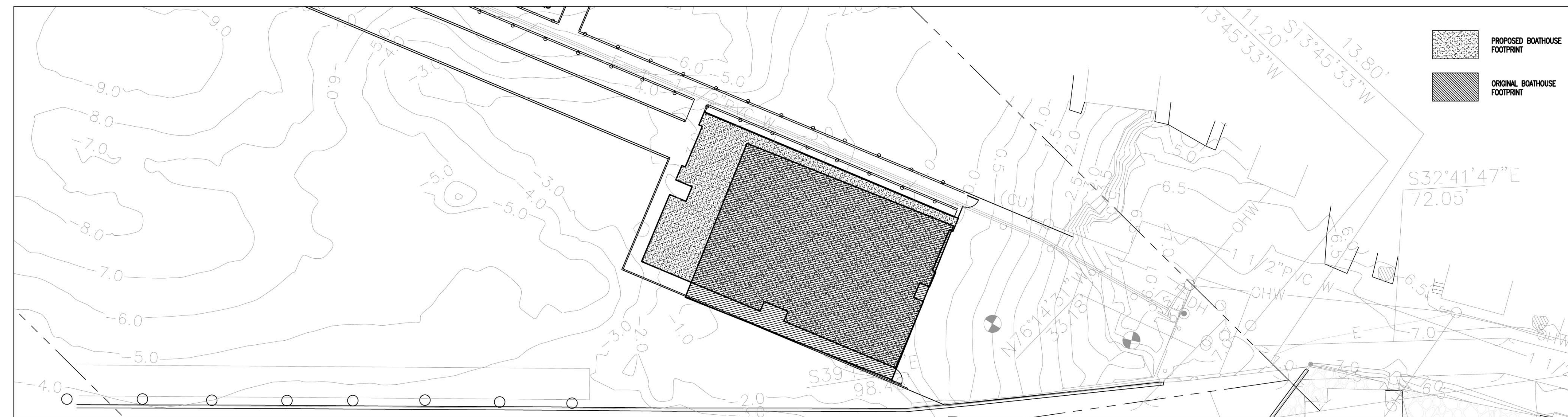




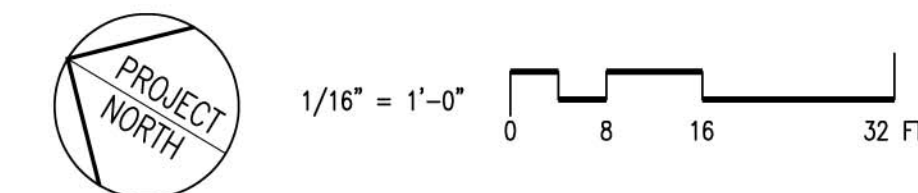
2 ORIGINAL SITE PLAN
SCALE: 1/16" = 1'-0"

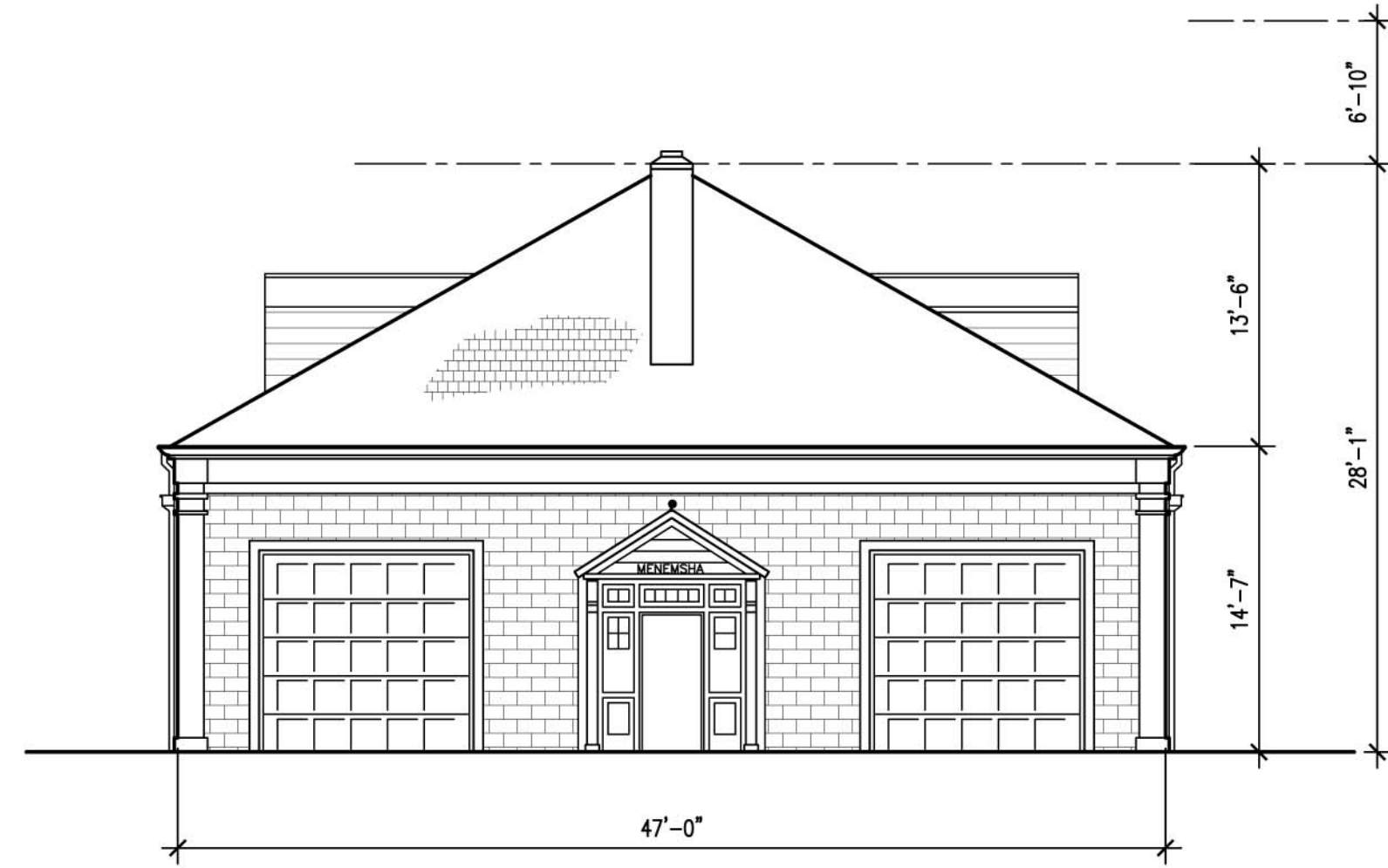


1 PROPOSED SITE PLAN
SCALE: 1/16" = 1'-0"



2 ORIGINAL/PROPOSED OVERLAY
SCALE: 1/16" = 1'-0"

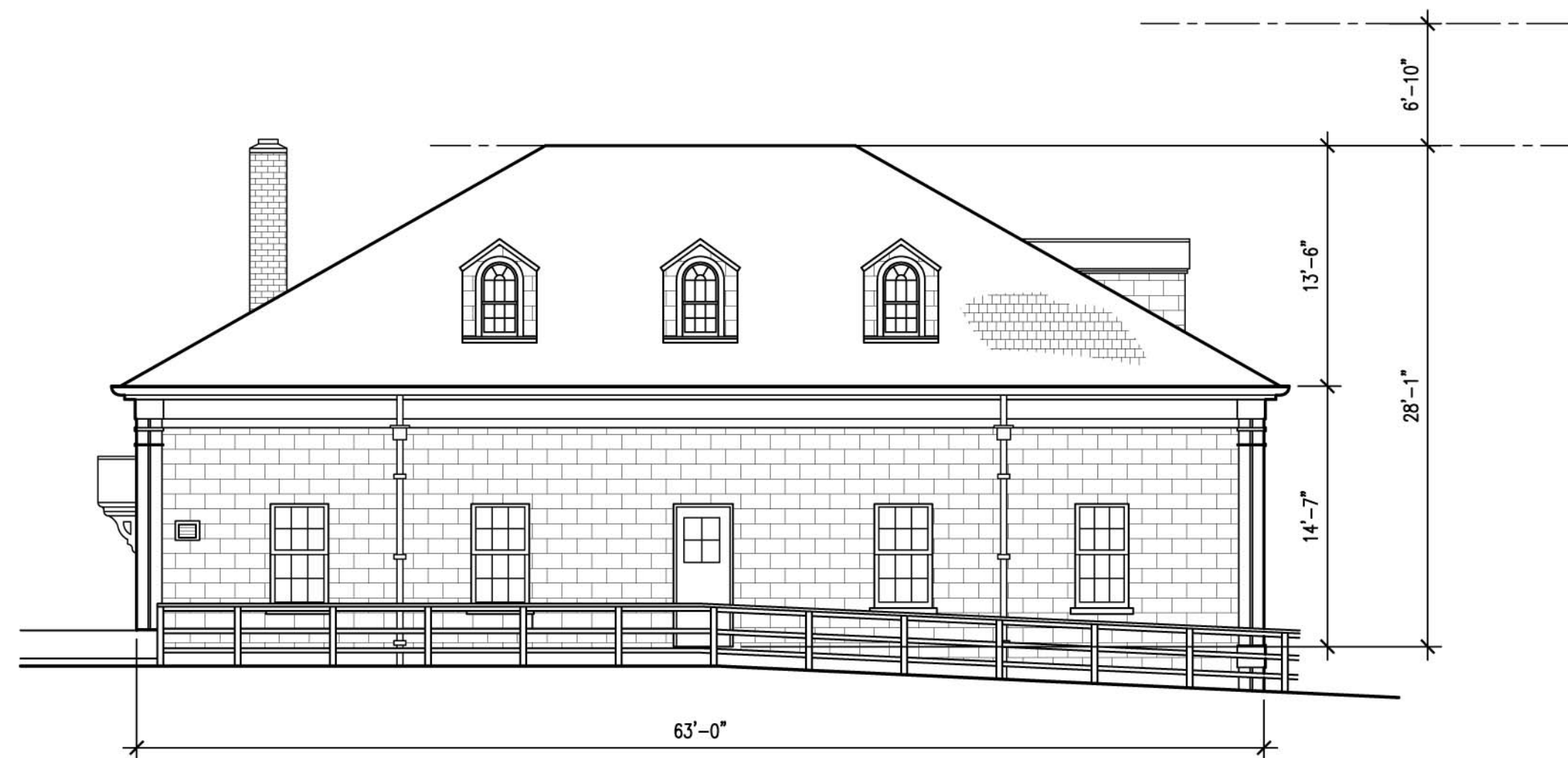




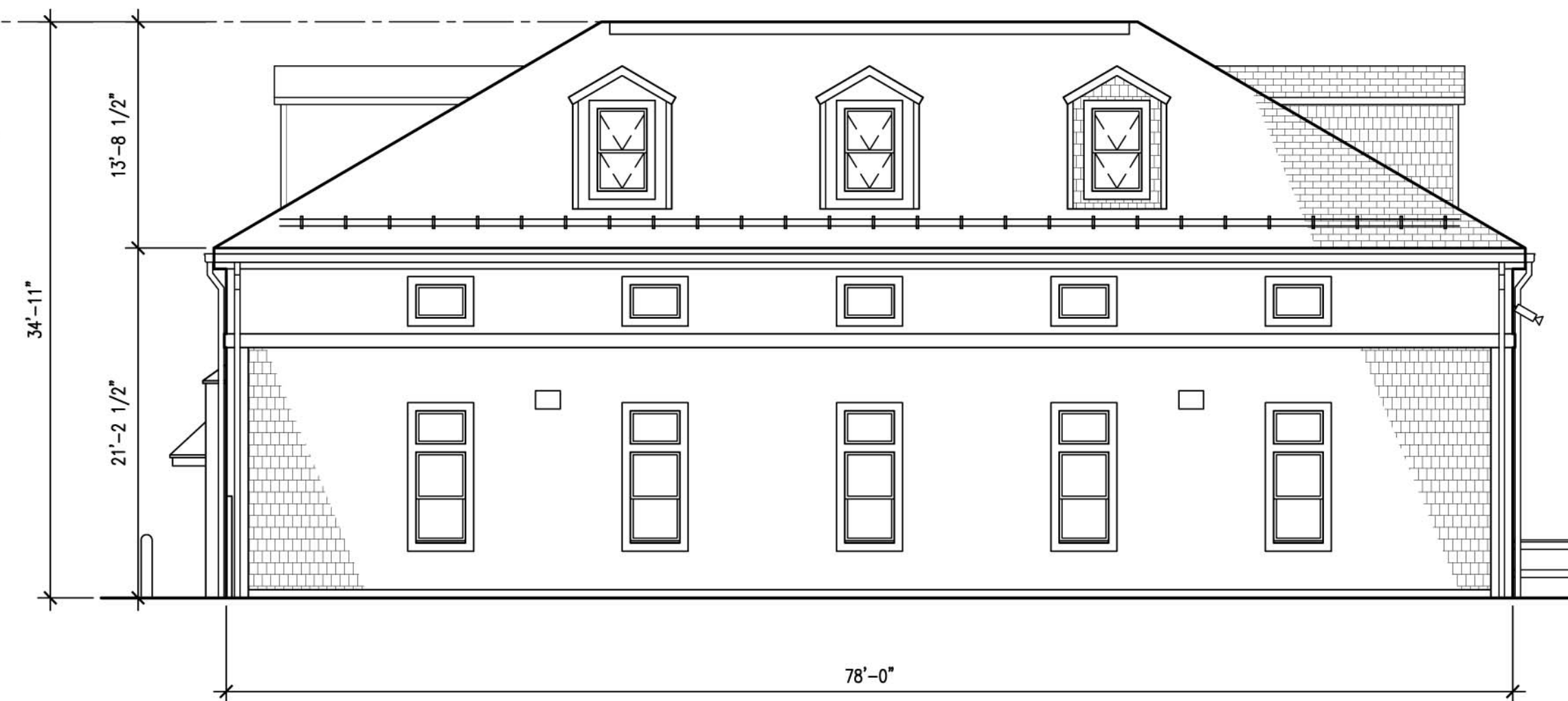
4 ORIGINAL SOUTH ELEVATION
SCALE: 1/8"=1'-0"



3 PROPOSED SOUTH ELEVATION
SCALE: 1/8"=1'-0"



2 ORIGINAL EAST ELEVATION
SCALE: 1/8"=1'-0"



1 PROPOSED EAST ELEVATION
SCALE: 1/8"=1'-0"

