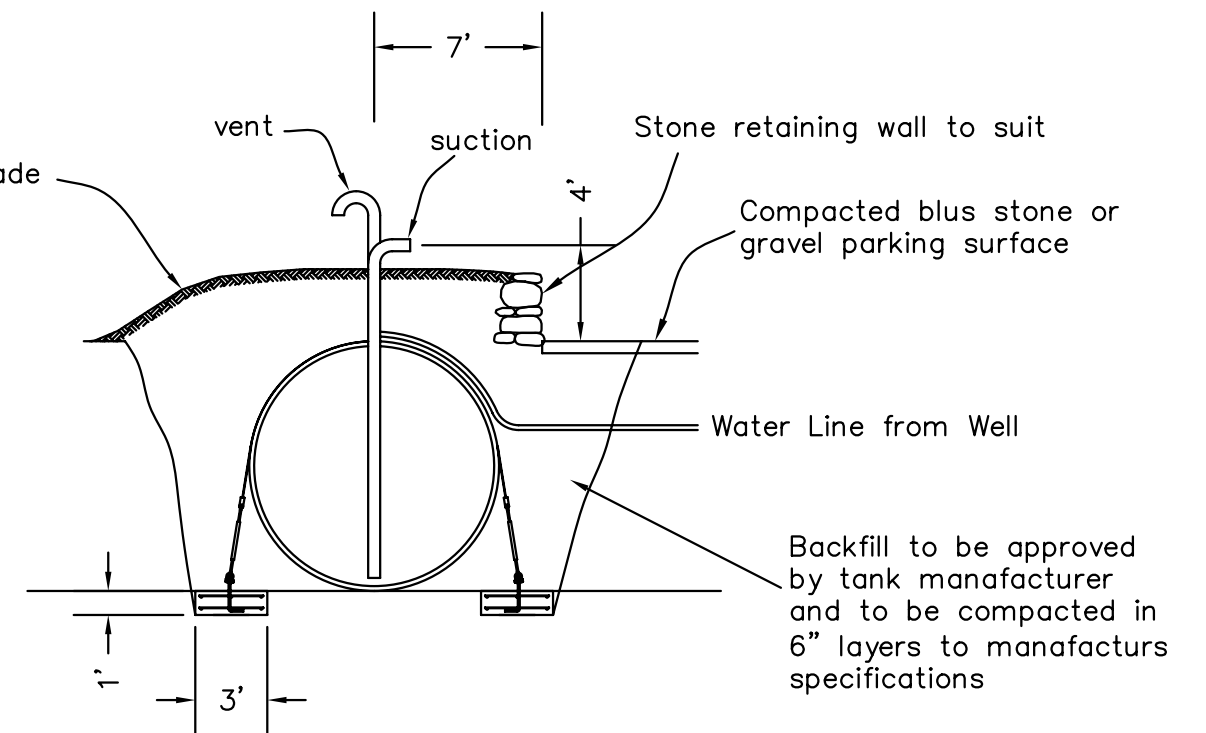
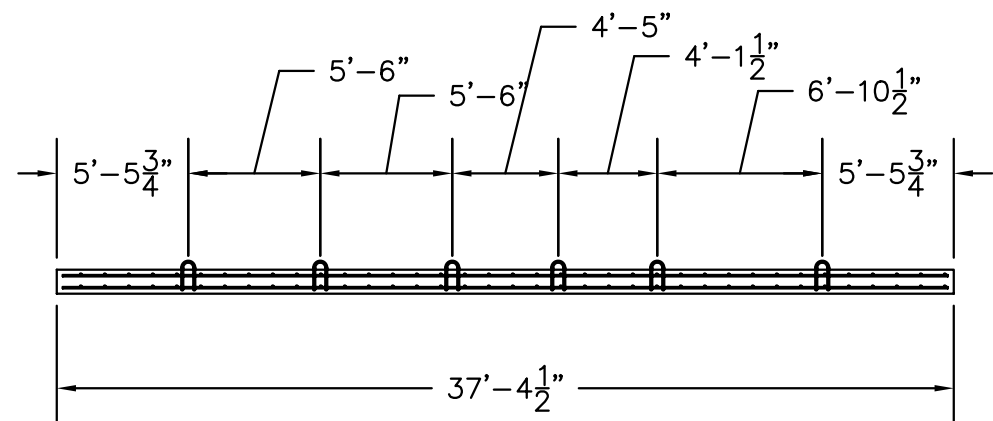


PROFILE



CROSS SECTION

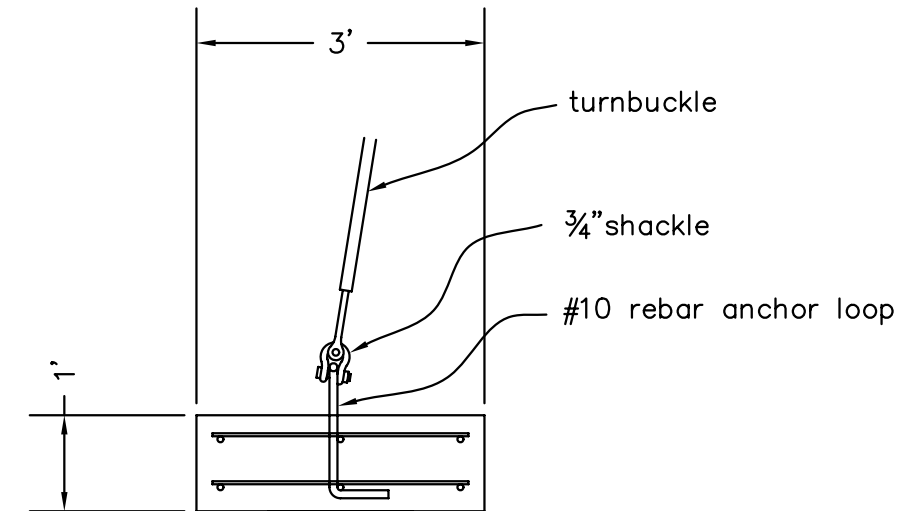
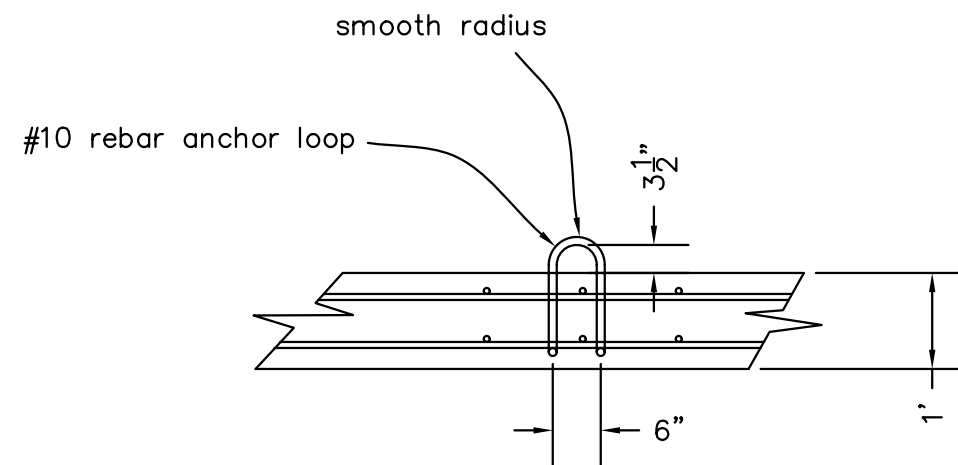


DEADMAN BEAM ANCHOR LOCATIONS

Notes:
The top of the deadman beam is to be at the same elevation as the bottom of the tank.
The tank installation must be done according to the installation instructions provided by the manufacturer.

MIDDLE LINE FIRE TANK

1" = 8'



longitudinal reinforcing steel
 3-#6 bars on top
 3-#6 bars on bottom

transverse steel
 #6 bars 12" on center
 top and bottom

DETAIL OF REINFORCED DEADMAN BEAM

1" = 2'