



**SPECIAL BOARD OF SELECTMEN MEETING**  
**MINUTES**  
**FEBRUARY 14, 2013 – 6:00 P.M.**  
**BROOKFIELD HIGH SCHOOL MEDIA CENTER**

**CALL TO ORDER & PLEDGE OF ALLEGIANCE:** Selectman Howard Lasser called the meeting to order at 6:00 p.m.

**PRESENT: Board of Selectmen:** Howard Lasser, Selectman; George Walker, Selectman; **Board of Finance:** Chairman Jerry Friedrich, Irv Agard, Phil Kurtz, Ron Jaffe; Jennifer Tomaino and Robin Appleby. **Board of Education:** Chairman Ray DiStephan, Jane Miller, Susan Queenan; and Superintendent of Schools Anthony Bivona, Dr. Genie Slone, Assistant Superintendent; Charles Manos, Director of Special Services; Art Colley Director of Technology Operations and School Principals, and members of the public.

**ABSENT:** First Selectman William R. Davidson

**2013/2014 TOWN BUDGET WORKSHOP:** The Board of Education presented their 2013/14 Budget to the Board of Selectmen and Board of Finance. Discussion followed the presentation.

**ADJOURN:** Howard Lasser made motion to adjourn at 7:44 p.m., seconded by George Walker. Motion carried unanimously.

---

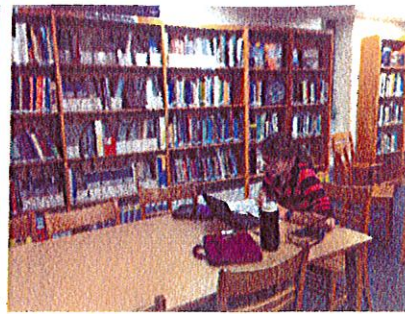
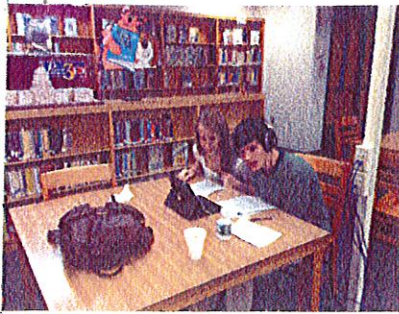
William R. Davidson  
First Selectman

---

Howard Lasser  
Selectman

---

George F. Walker  
Selectman



Middle School students interact with students in Seville, Spain



## Brookfield Board of Education Budget Proposal 2013-2014

In order to provide students with a high quality educational program, this budget will...

- ❖ Extend World Language into Kindergarten & Grade 1 (Spanish) and Mandarin in Grades 7 & high school
- ❖ Personalize instruction by adhering to class size guidelines to address each student's unique needs
- ❖ Integrate Common Core State Standards into Language Arts, Math and World Language curricula
- ❖ Integrate 21st century skills into teaching and learning to ensure students are college & career ready
- ❖ Provide social, emotional and academic support to secondary students

### Certified Staffing in the Proposal

Spanish Teacher.....	CES: 1.00 FTE
Mandarin Teacher .....	WMS/BHS 1.00 FTE
Special Education Teacher .....	BHS 1.00 FTE
Social Worker.....	WMS 1.00 FTE
Total.....	4.00 FTE

FTE=full time equivalent

### Important Dates

**Public Hearing**  
Tuesday  
April 9, 2013  
7:30 P.M.  
BHS Auditorium

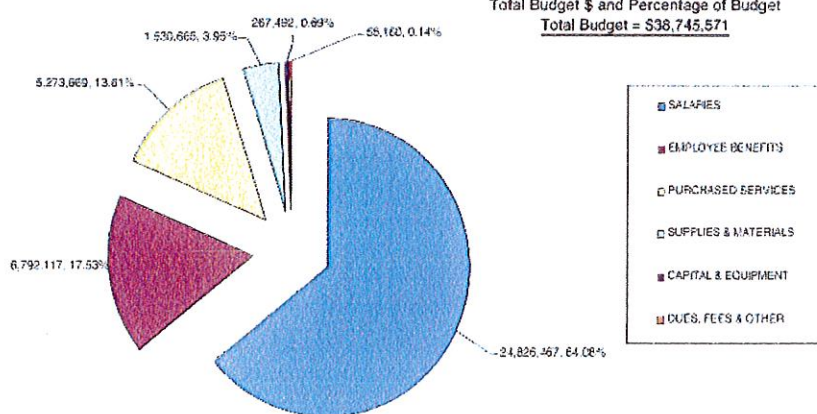
**Annual Town Meeting**  
Tuesday  
May 7, 2013  
BHS Auditorium

**Town Referendum**  
Tuesday  
May 21, 2013  
Projected date

### Stay informed about the budget...

- Sign-up for district E-News at <http://www.brookfield.k12.ct.us/subsite/dist/page/district-information-e-news-1312>
- Access budget information on the district website under "Quick Links" on the main page or go to <http://www.brookfield.k12.ct.us/subsite/dist/page/district-budget-1070>

2013-14 BOE Budget by Super Object  
Total Budget \$ and Percentage of Budget  
Total Budget = \$38,745,571



**The 2013-2014 budget proposal of \$38,745,571  
represents an increase of \$1,709,571 or a 4.62% increase versus the 2012-13 budget.**

# World Language Program Improvements in the Budget proposal

## Program Improvements:

- Add a Kindergarten & Grade 1 Spanish Program, including a Spanish Teacher, Resources and Curriculum Development
- Begin a Mandarin Program in Grade 7 and at the high school, including a Mandarin Teacher, Resources and Curriculum Development
- Curriculum Development and professional Development for current World Language staff to improve our program.

## Academic Drivers:

- “Develop, refine and integrate the World Language Program to ensure that it is challenging to all students at all levels of learning.” from BPS Strategic Plan 2010-2015.
- Goal of our World Language Program is to have all students **proficient** in another language other than English.
- World languages and cultural literacy is a fundamental 21st Century Skill integrating the Common Core State Standards in the teaching of a World Language.
- Foreign language study in the early grades is associated with students’ higher performance in basic skills.
- Learning a second language at an early age can help to develop students’ cognitive flexibility or creative thinking skills.
- When language instruction begins early in a child’s academic career, the child has more time to develop true proficiency in the target language.

## Additional Budget Priorities

### Technology

- At Brookfield High School, continue Phase III of the district’s multi-year tablet initiative which provides all incoming freshman with an iPad for instructional use.
- For Grades K-8, continue with Phase II of the implementation of K-8 classroom-based technology learning centers focused on literacy skills across all content areas as required by the Common Core State Standards (CCSS). These centers will consist of a minimum of six (6) tablet devices, to be used for small group and individualized instruction and will be installed in all Kindergarten, 2nd grade and 5th grade classrooms.

### Pupil Personnel Services

For 2013-14 the Outside Professional Services and Out of District Tuition line items for Special Education will decrease by \$50,430 vs. 2012-13.

### District-wide Initiatives

This budget also requests a total of \$87,230 of funding for curriculum design and professional development for the implementation of the Common Core State Standards, Smarter Balance Assessments, World Languages, and the new mandated teacher and administrator evaluations systems.

### Health Benefits

- Collaborative cost containment efforts between our bargaining units, district administration and the Board of Education continue to provide positive results.
- As part of the negotiated contract settlement with the Brookfield Administrators Association (BAA), all certified administrators will be moving to a high deductible health plan on July 1st, 2013 and all 318 district employees who utilize our health benefit programs will be on consumer based health care plans.
- For 2013-14, health benefit costs are slated to increase by 9.54% or \$468,069.

### Employee Pension

- During 2012-13, the Boards of Selectmen, Finance and Education all signed on to an agreement to fully fund the Annual Required Contribution (ARC) for the town’s pension plan for non-certified staff. As a result, the pension contribution line item has increased by \$100,000 for a total of \$400,000.
- Since 2010-11, the Board of Education’s contribution to the pension has increased by \$261,471.