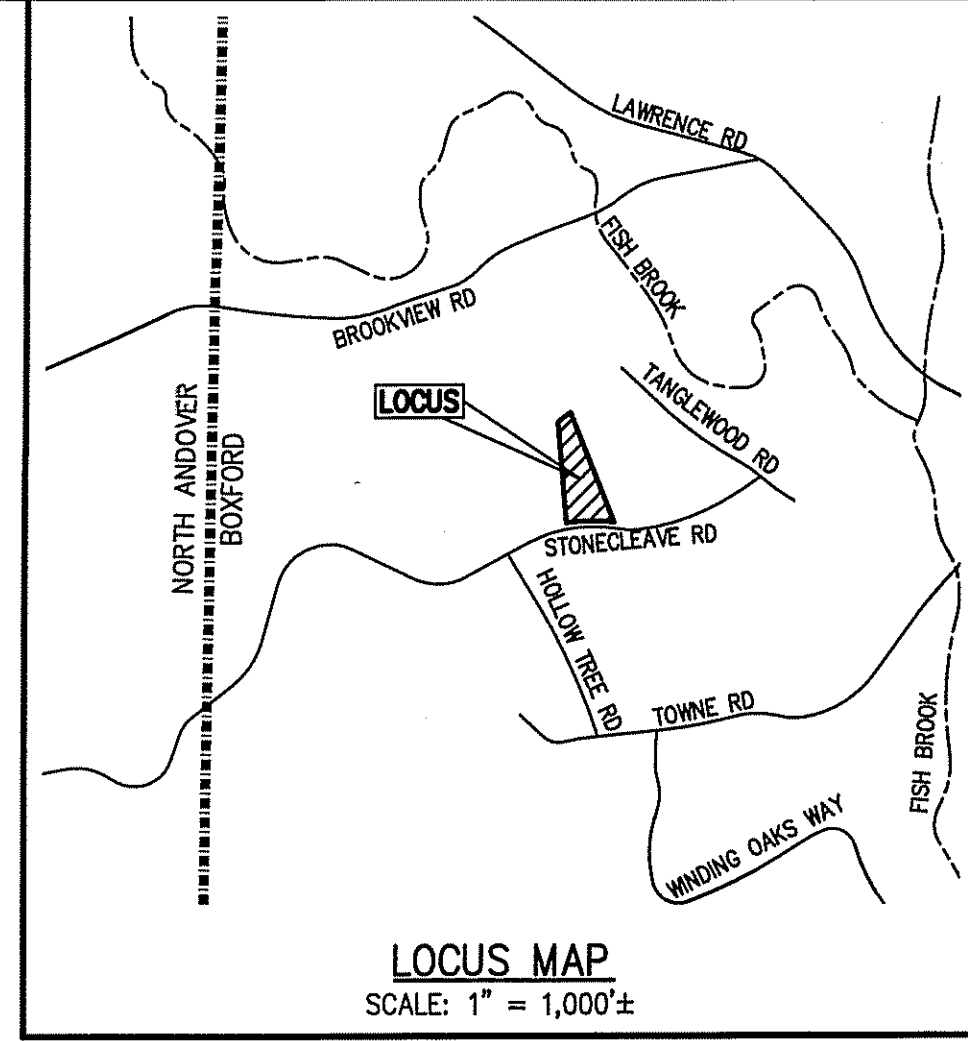
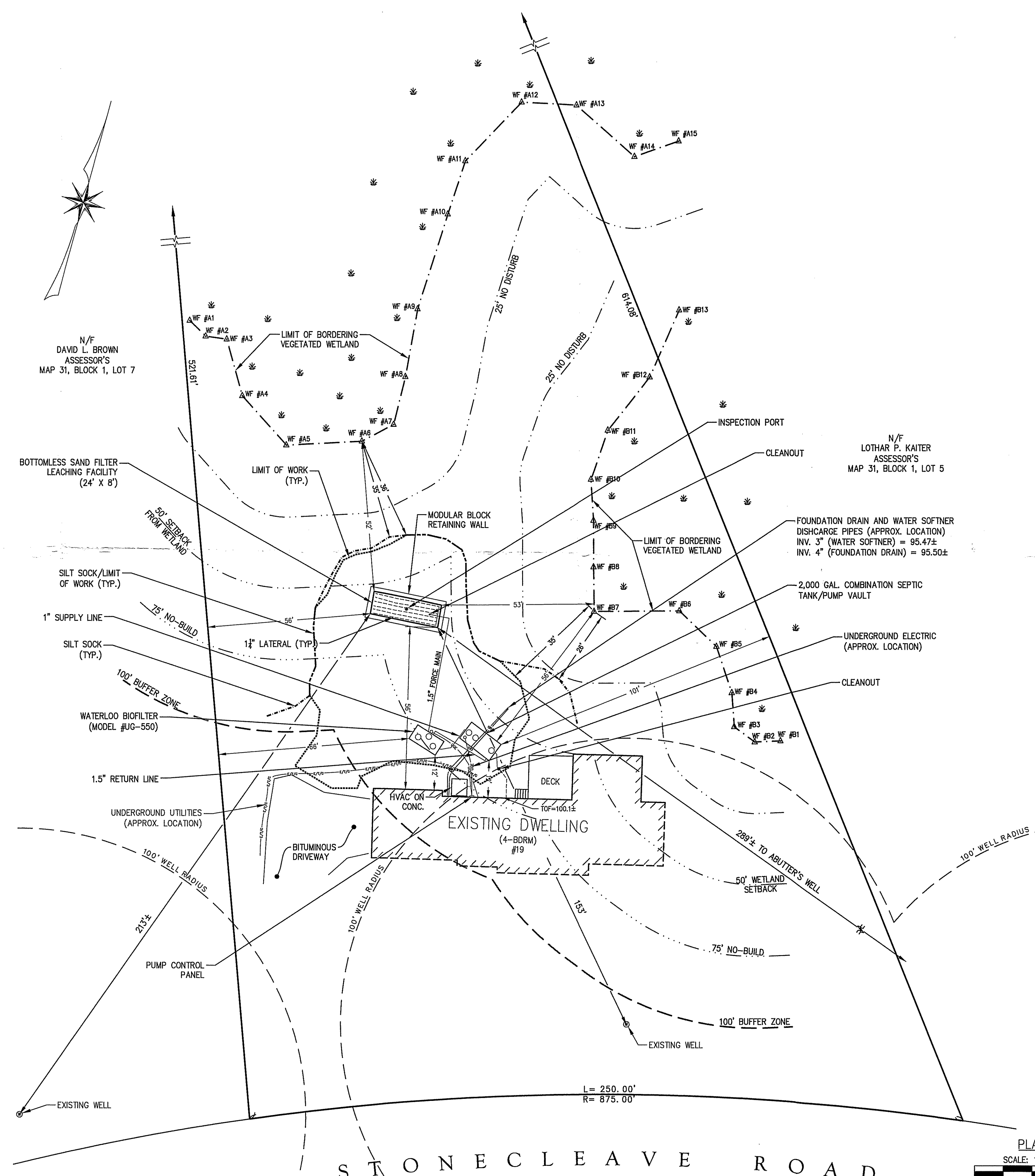
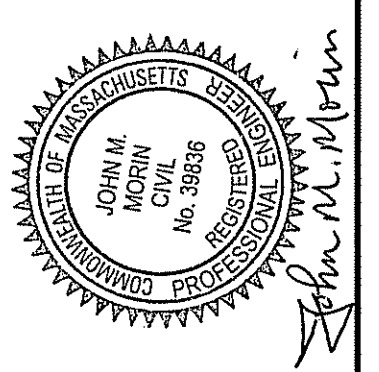


LEGEND:

BORDERING VEGETATED WETLANDS	---
25' NO DISTURB	---
50' WETLAND SETBACK	---
75' NO BUILD	---
100' BUFFER ZONE	---
WETLAND FLAG	△ WF #A15
LIMIT OF WORK	---
SILT SOCK	---
LIMIT OF WORK/SILT SOCK	---



The Morin-Cameron GROUP, INC.
 CIVIL ENGINEERS | ENVIRONMENTAL CONSULTANTS
 LAND SURVEYORS | LAND USE PLANNERS
 P. 978.777.5838, F. 978.777.3488, W. WWW.MORINCAMERON.COM



REVISIONS

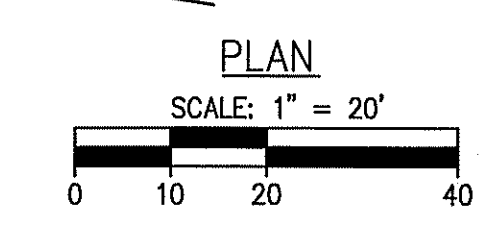
NO.	DESCRIPTION	DATE

NOTES:

- THIS PLAN HAS BEEN PREPARED TO ACCOMPANY A REQUEST FOR A CERTIFICATE OF COMPLIANCE TO THE BOXFORD CONSERVATION COMMISSION UNDER DEP FILE NUMBER #114-1232 DATED SEPTEMBER 6, 2016.
- AN AS-BUILT FIELD SURVEY WAS COMPLETED IN NOVEMBER 2016 BY THE MORIN-CAMERON GROUP, INC.

SITE PLAN OF LAND AS-BUILT
 IN
BOXFORD, MASSACHUSETTS
19 STONECLEAVE ROAD
 (ASSESSOR'S MAP 31, BLOCK 1, LOT 6)
 PREPARED FOR
SERENA CAPERONIS

DRAWING NO. **CCAB - 3464**
 SHEET NO. **1 OF 1**



STONECLEAVE ROAD

N/F
DAVID L. BROWN
ASSESSOR'S
MAP 31, BLOCK 1, LOT 7

N/F
LOTHAR P. KAITER
ASSESSOR'S
MAP 31, BLOCK 1, LOT 5

L = 250.00'
R = 875.00'