

LEGEND

TBC TO BE CUT

VERTICAL DATUM: N.A.V.D. 1988

WETLAND FLAGGING: WETLAND CONSULTING SERVICES (SEPT. 2016)

NOTES FOR PARKING AREA:

1. REMOVE 22" BIRCH, 10" ELM, & 6" DEAD TREE.
2. REMOVE DISCARDED METAL TRASH.
3. FILL IN AREA TO ELEVATION 160' WITH GRAVEL.
4. INSTALL HANDICAP SIGN BY PARKING SPACE INDICATED.

DATE	REVISION	BY	REASON
07/28/16	INITIAL RELEASE	TEC	SUPPLEMENTAL MEASUREMENTS
08/18/16	CHANGED PIPE GATE DIMENSION TO 18'-0"	TEC	PROBLEM LOG ENTRY 288
		TEC	FIELD
			2

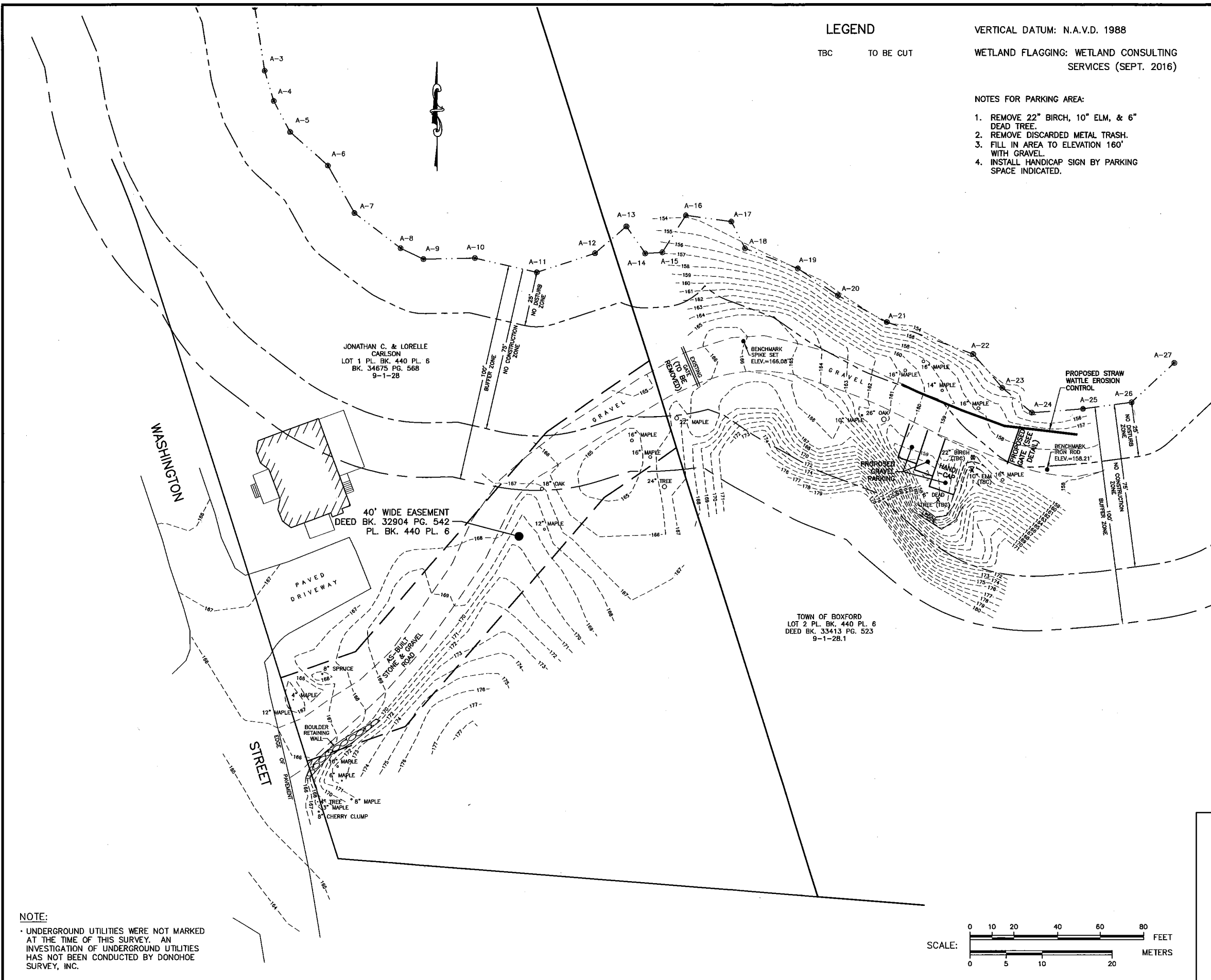
DETAIL 1
ELEVATION DETAIL AT TOP

DETAIL 2

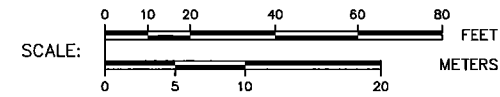
NOTES:

1. ALL GATE STEEL PIPES SHALL BE IN ACCORDANCE WITH ASTM A-304. PLATES SHALL BE ASTM A-36.
2. ALL STEEL PIPES SHALL BE PRIMED WITH ZINC-CHROMIUM PRIMER AND FINISHED WITH AN APPROVED "GOLD SAFETY YELLOW" TOP COAT COMPATIBLE WITH THE PRIMER AND FOR EXTENDED EXPOSURE.
3. REFLECTIVE SHALL BE SPACED AT 3 FEET ALONG THE LENGTH OF THE CROSSWALK AND BRACE.
4. BACKFILL AT POSTS TO BE COMPACTED.

TRANSMISSION LINE STANDARDS	REVIEWED BY: JLC	nationalgrid
R.O.W. GATES AND FENCES	APPROVED BY: MSB	
PIPE GATE (NEW ENGLAND)	SCALE: NTS	
	SHEET: 1 OF 5	
	PROJECT: SP.06.01.301	SP.06.01.301.103



NOTE:
 * UNDERGROUND UTILITIES WERE NOT MARKED AT THE TIME OF THIS SURVEY. AN INVESTIGATION OF UNDERGROUND UTILITIES HAS NOT BEEN CONDUCTED BY DONOHOE SURVEY, INC.



**PROPOSED PARKING PLAN
 IN
 BOXFORD, MA**

PREPARED FOR
TOWN OF BOXFORD

SCALE: 1" = 20' NOVEMBER 2, 2016
DONOHOE SURVEY, INC.
 363 BOSTON ST. TOPSFIELD, MA
 (978) 887-6161