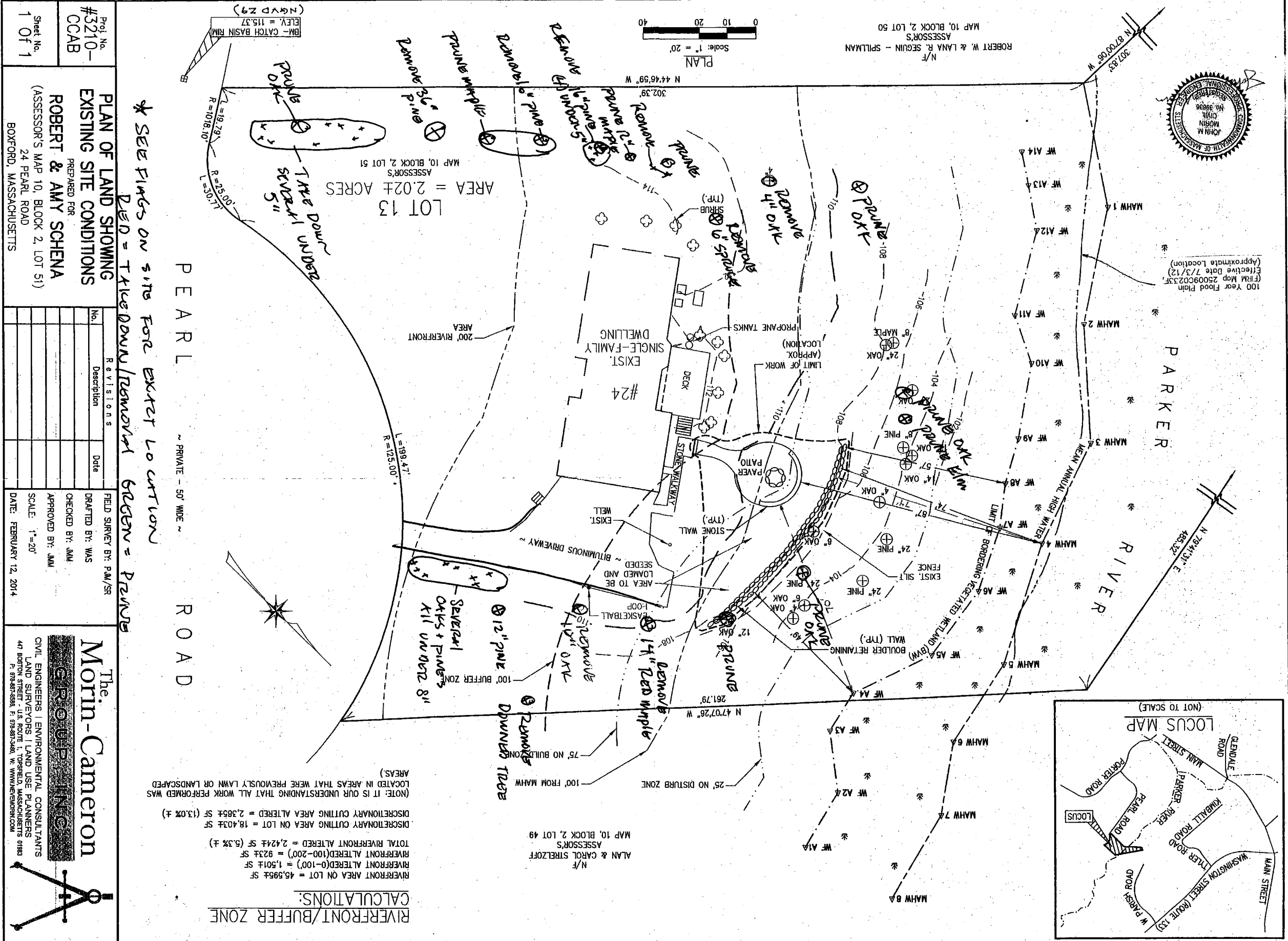
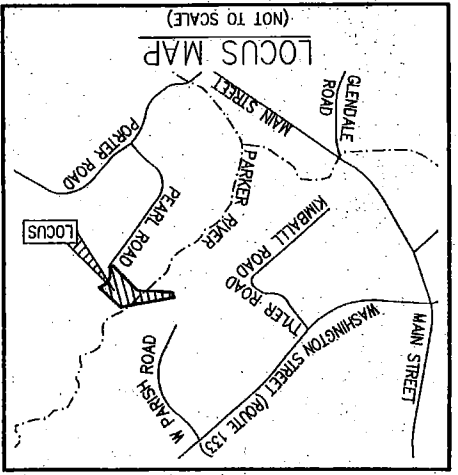


11/1/2016

# Tree Cutting Plan



**RIVERFRONT/BUFFER ZONE CALCULATIONS:**  
 RIVERFRONT AREA ON LOT = 45,595± SF  
 RIVERFRONT ALTERED(0-100') = 1,501± SF  
 RIVERFRONT ALTERED(100-200') = 923± SF  
 TOTAL RIVERFRONT ALTERED = 2,424± SF (5.3% F.)  
 DISCRETIONARY CUTTING AREA ALTERED = 2,365± SF (13.0% F.)  
 (NOTE: IT IS OUR UNDERSTANDING THAT ALL WORK PERFORMED WAS LOCATED IN AREAS THAT WERE PREVIOUSLY LAWN OR LANDSCAPED AREAS.)

Prof. No. #3210-CCAB  
 PLAN OF LAND SHOWING EXISTING SITE CONDITIONS  
 PREPARED FOR ROBERT & AMY SCHEMA (ASSESSOR'S MAP 10, BLOCK 2, LOT 51)  
 24 PEARL ROAD BOXFORD, MASSACHUSETTS

No.	Description	Date

FIELD SURVEY BY: PAM/SR  
 DRAFTED BY: WAS  
 CHECKED BY: JMM  
 APPROVED BY: JMM  
 SCALE: 1"=20'  
 DATE: FEBRUARY 12, 2014

The Morin-Cameron Group, Inc.  
 CIVIL ENGINEERS | ENVIRONMENTAL CONSULTANTS  
 LAND SURVEYORS | LAND USE PLANNERS  
 47 BOSTON STREET - U.S. ROUTE 1, TOPSFIELD, MASSACHUSETTS 01888  
 P: 978-897-3588 F: 978-897-3488 W: WWW.MORINCAMERON.COM