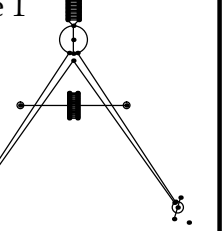




Huntress Associates, Inc.  
Landscape Architecture & Land Planning  
17 Tewksbury Street, Andover MA 01810  
978.470.8882 470.8890 fax

The Neve-Morin Group, Inc.

Engineers - Surveyors - Land Use Planners  
447 Old Boston Road - US Route 1  
Topsfield, Massachusetts 01983



Project:  
**HAYNES LAND  
Recreation Fields**

**Boxford, Massachusetts**

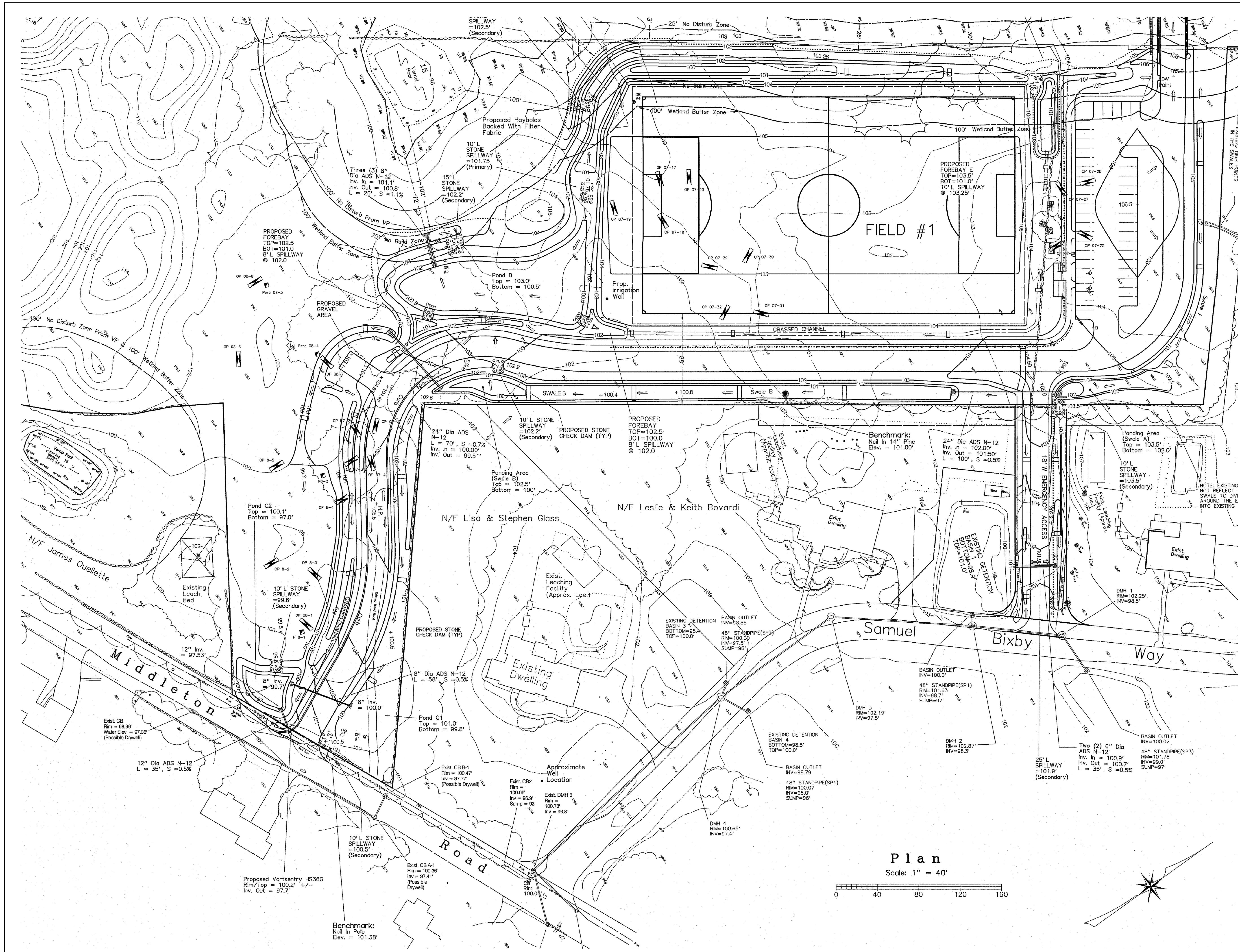
Drawing Title:

**Grading & Drainage  
As-Built Plan  
Phase Two**

Revision	Date

Scale: AS NOTED	Drawing No. <b>AB 2.0</b>
Date: 5.27.16	
Job: 00-107	
File: PR-AB2.0	
Drawn: CCH	
Checked: --	



**Plan**

Scale: 1" = 40'

