

Kenneth Rohr  
20B Stiles Pond Rd.  
W. Boxford, MA  
01885  
978-352-7865

July 28, 2015

Conservation Commission  
Town of Boxford  
7A Spofford Rd.  
Boxford, MA 01921

Re: Determination of Negligible Impact, File 114-1171

I am applying to remove three trees on our property, within the buffer zone of Stiles Pond:

- 1) A storm last winter knocked a large tree completely down onto the ground.
- 2) That tree damaged another, smaller tree when it fell.
- 3) When we applied for tree removal to rebuild a portion of our house, I did not realize that there is an additional tree whose trunk bends up over the top of the new structure, so it was not marked for removal in our original plan submitted to the Conservation Commission, Boxford File 114-1171. The trees marked with an "X" are those originally approved for removal. I am concerned about the safety of the house because of the way it curves.

I'd like to have the these three additional trees removed. They are marked in green on the drawing.

Thanks,

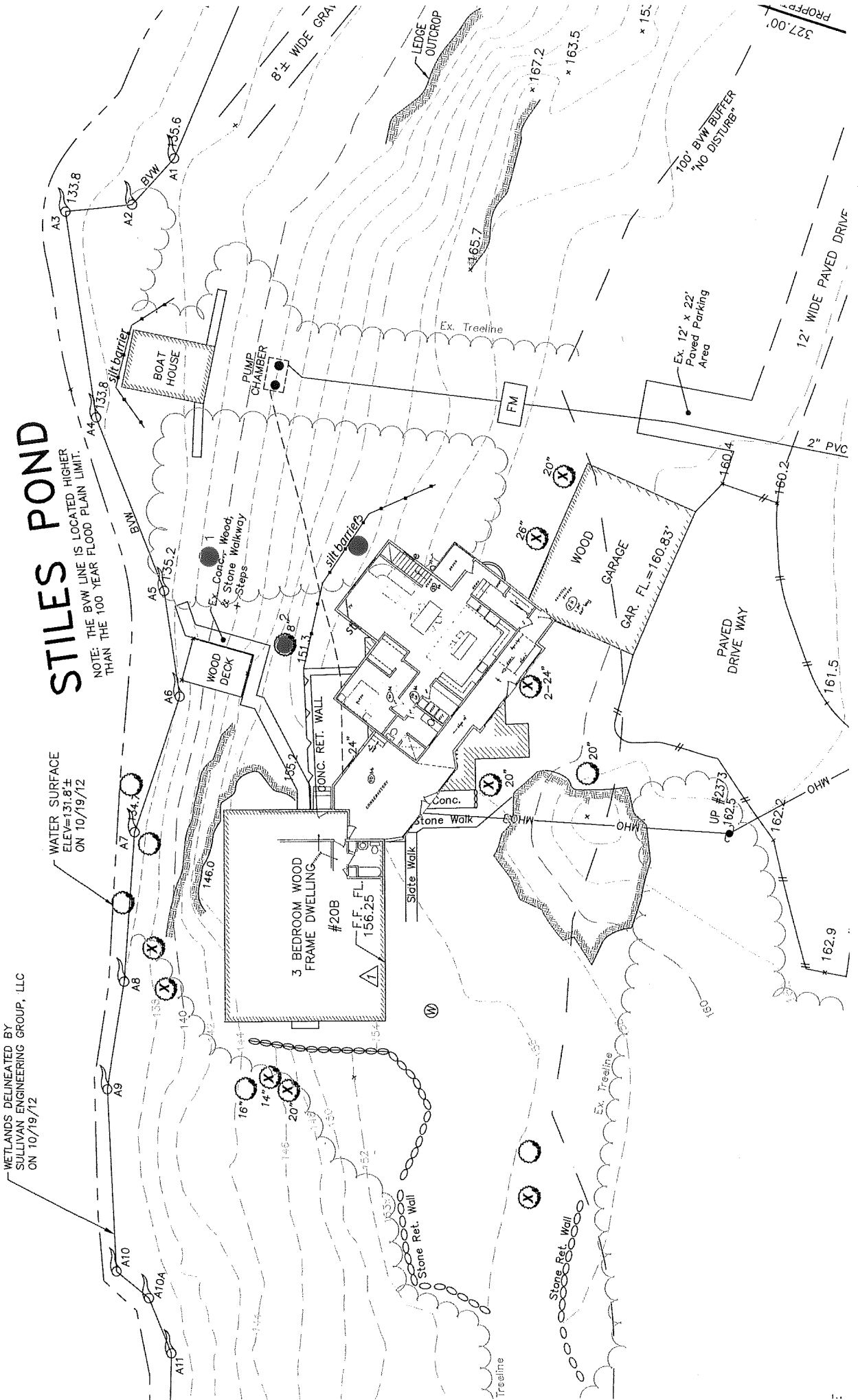
Kenneth Rohr

METLANDS DELINEATED BY  
SULLIVAN ENGINEERING GROUP, LLC  
ON 10/19/12

# STILES POND

WATER SURFACE  
ELEV.=131.8'±  
ON 10/19/12

NOTE: THE BWL LINE IS LOCATED HIGHER  
THAN THE 100 YEAR FLOOD PLAIN LIMIT.



PROFF...  
327.00'

100' BWL BUFFER  
"NO DISTURB"

Ex. 12' x 22'  
Paved Parking  
Area

PAVED  
DRIVE WAY

Stone Ret. Wall

Ex. Treeline

Ex. Treeline

8'± WIDE GRAV

BWL

BWL

BWL

BWL

BWL

BWL

BWL

BWL

BWL

BWL

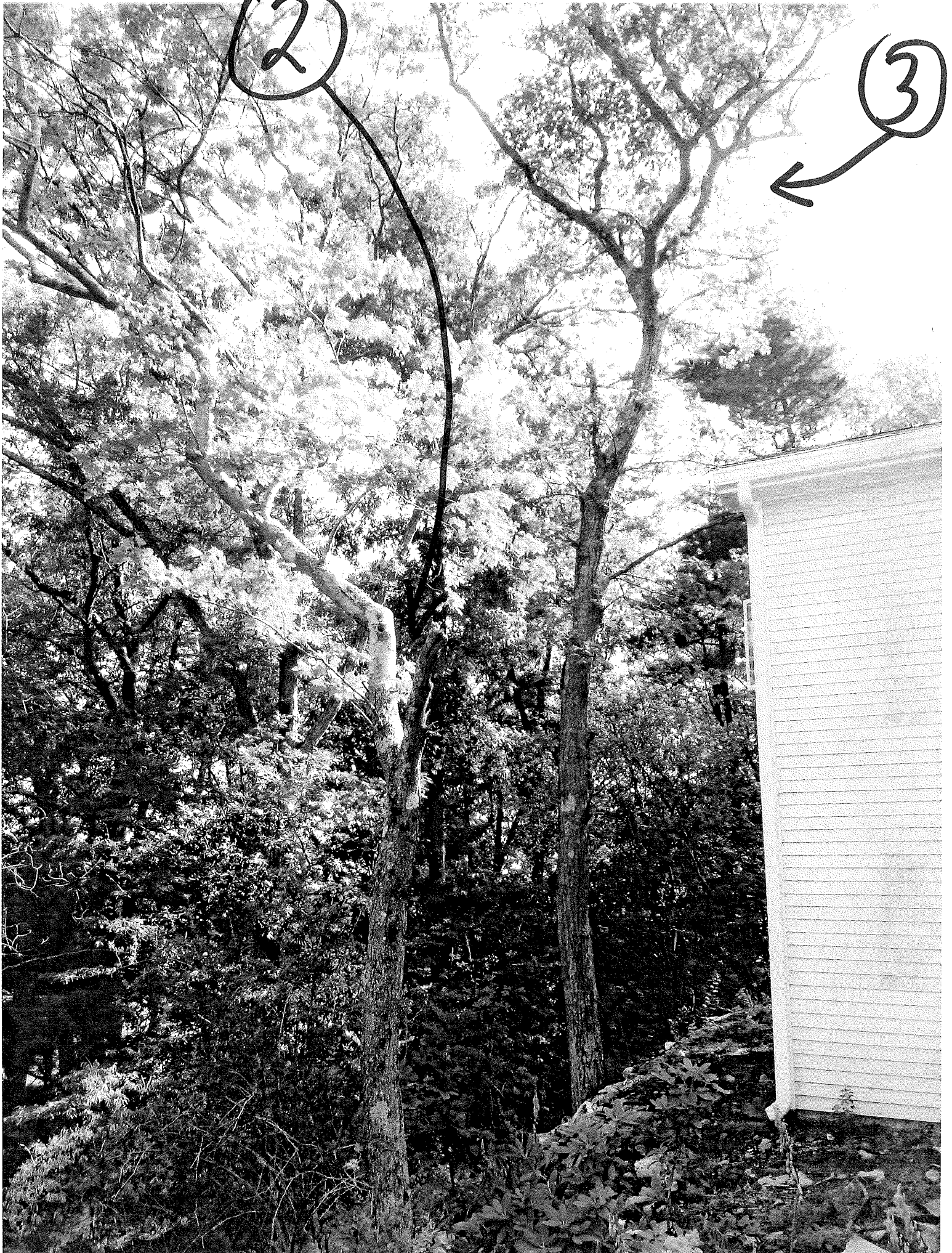
BWL

BWL



1





②

③