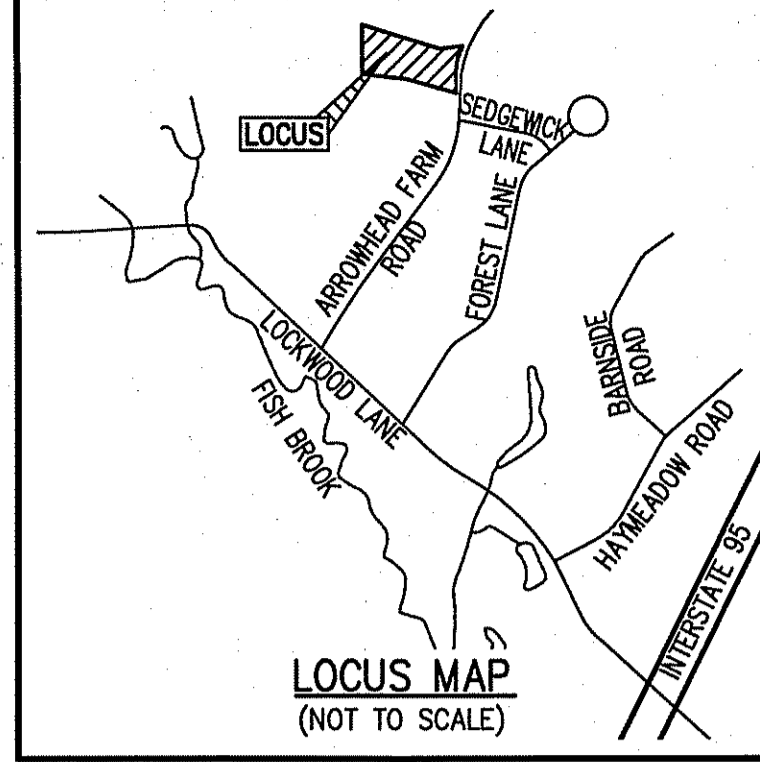


RECORD OWNER:

- 30 ARROWHEAD FARM ROAD (ASSESSOR'S MAP 37, BLOCK 1, LOT 31) - KAREN M. WINTHER (TRUSTEE OF THE 30 ARROWHEAD FARM ROAD NOMINEE TRUST), RECORDED AT THE SOUTHERN ESSEX REGISTRY OF DEEDS PAGE 30718, PAGE 442.

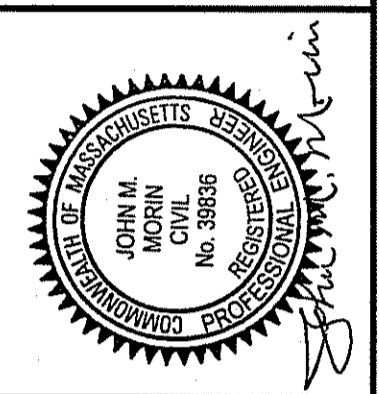
- NOTES:**
- WETLANDS DELINEATED BY DEROSA ENVIRONMENTAL CONSULTING, INC. ON SEPTEMBER 5, 2014.
 - EXISTING CONDITIONS SURVEY COMPLETED BY THE MORIN-CAMERON GROUP, INC. ON SEPTEMBER 23, 2014.
 - PROPERTY LINE INFORMATION COMPILED FROM "DEFINITIVE SUBDIVISION PLAN OF LAND IN BOXFORD, MASS., FOR ARROWHEAD FARM", RECORDED WITH THE SOUTHERN ESSEX REGISTRY OF DEEDS, PLAN BOOK 220, PLAN 63, AND AN ON GROUND SURVEY AND SHOULD BE CONSIDERED APPROXIMATE.
 - ELEVATIONS SHOWN HEREON ARE BASED ON AN ASSUMED DATUM.



The Morin-Cameron GROUP, INC.

CIVIL ENGINEERS | ENVIRONMENTAL CONSULTANTS
 LAND SURVEYORS | LAND USE PLANNERS

47 BOSTON STREET - U.S. ROUTE 1, TOPSFIELD, MASSACHUSETTS 01883
 P: 978-871-5586, F: 978-871-5861, W: WWW.MORINCAMERON.COM



SURVEY BY: PJM/SR
DRAFTED BY: WAS
CHECKED BY: JMM
APPROVED BY: JMM
SCALE: 1" = 20'
DATE: MAY 11, 2015

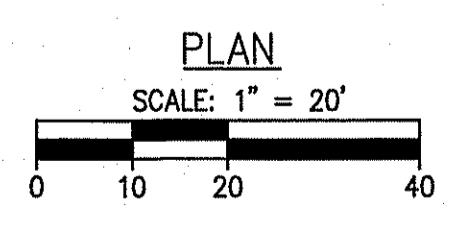
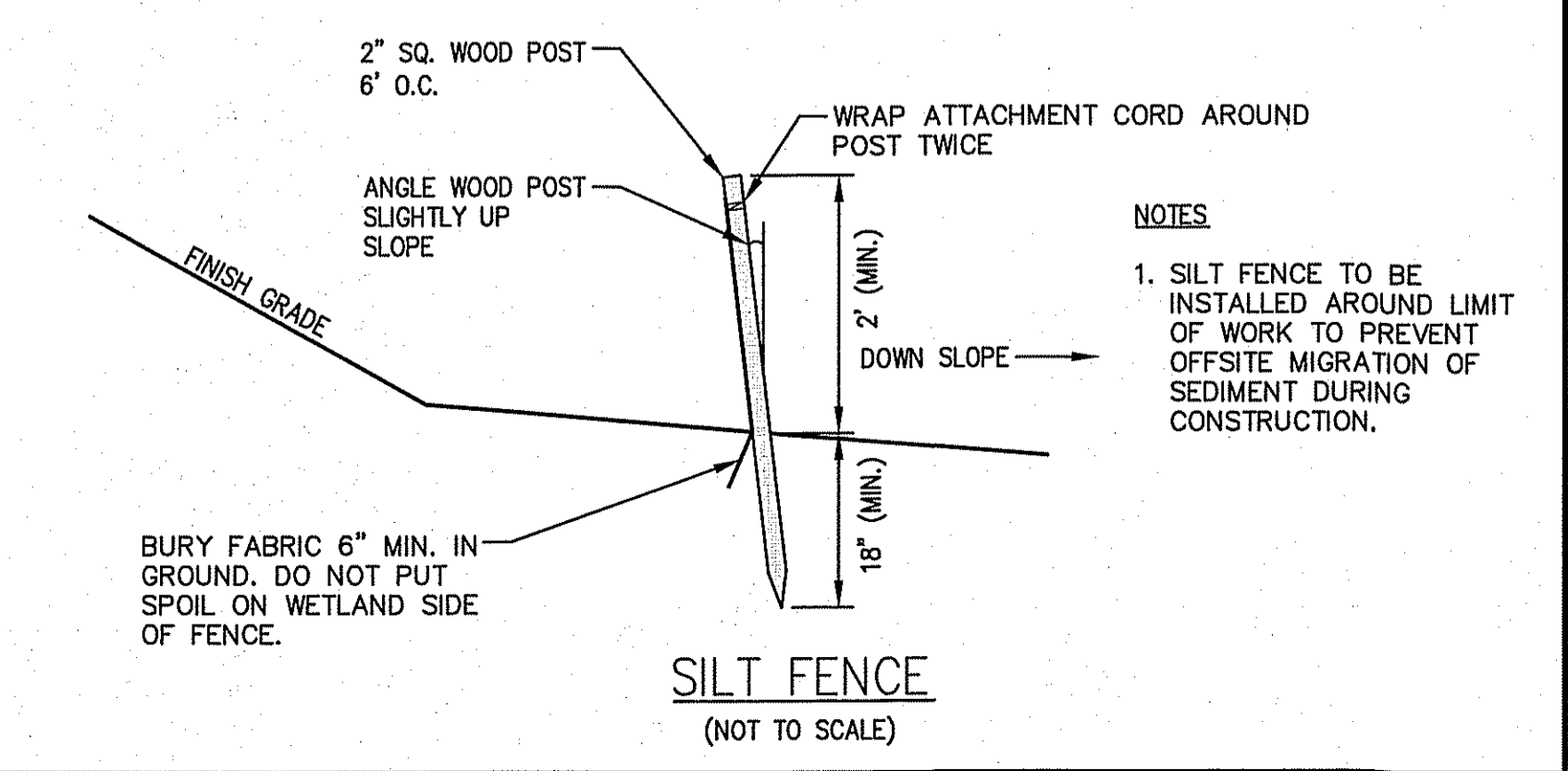
NO.	DESCRIPTION	DATE

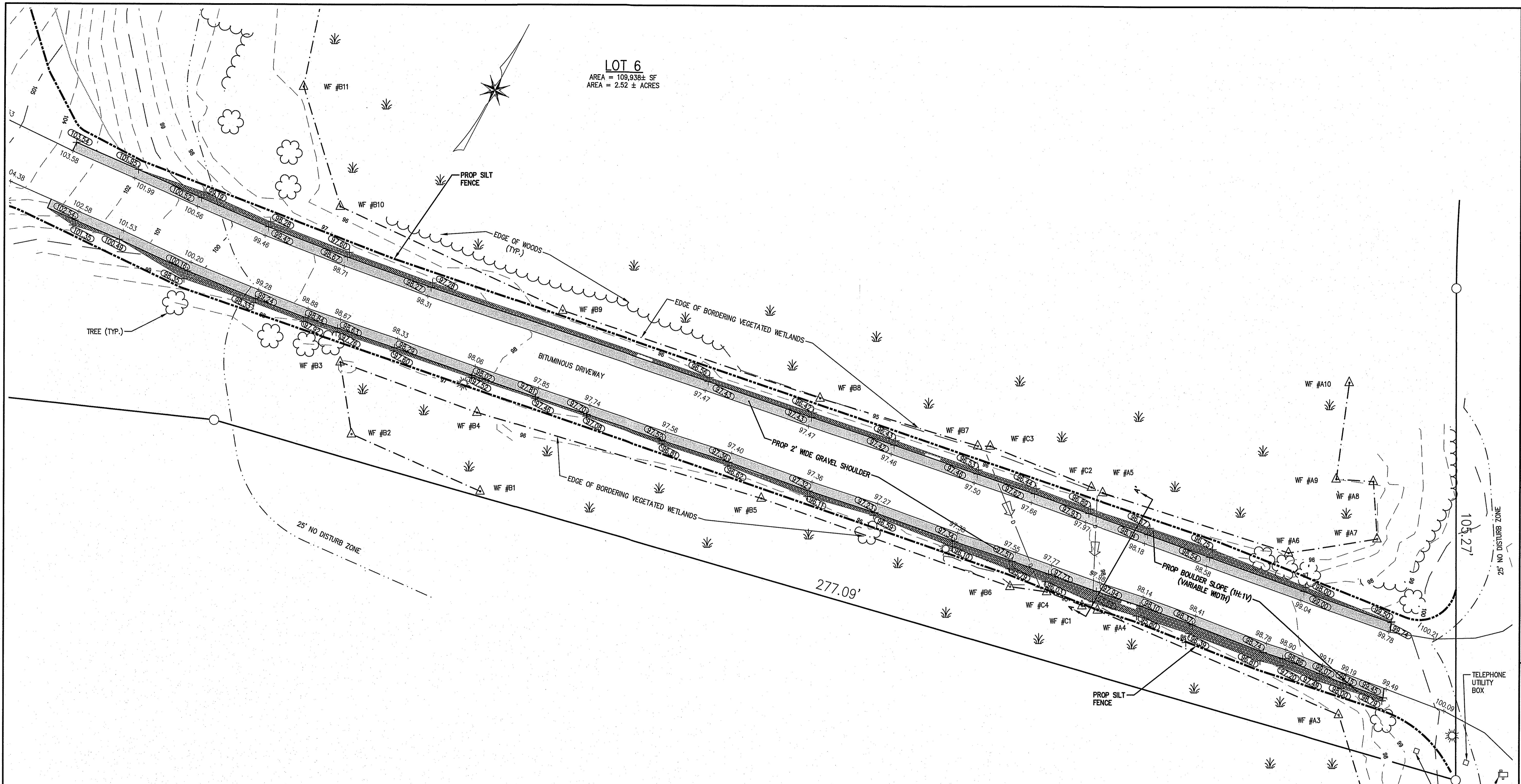
SITE PLAN OF LAND
30 ARROWHEAD FARM ROAD
 (ASSESSOR'S MAP 37, BLOCK 1, LOT 31)
 BOXFORD, MASSACHUSETTS

PREPARED FOR:
BARRY CARNES

LEGEND

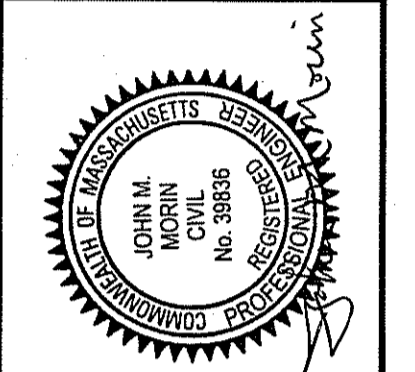
EXISTING GRADE		+90.8
FINISH GRADE		90.2
EDGE OF WETLAND		
25' NO DISTURB ZONE		
50' NO BUILD ZONE		
100' WETLAND BUFFER ZONE		
WETLAND FLAG		WF B14
SILT SOCK		





LOT 6
 AREA = 109,938± SF
 AREA = 2.52 ± ACRES

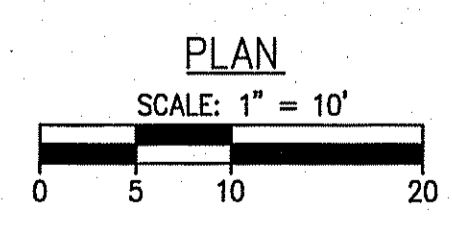
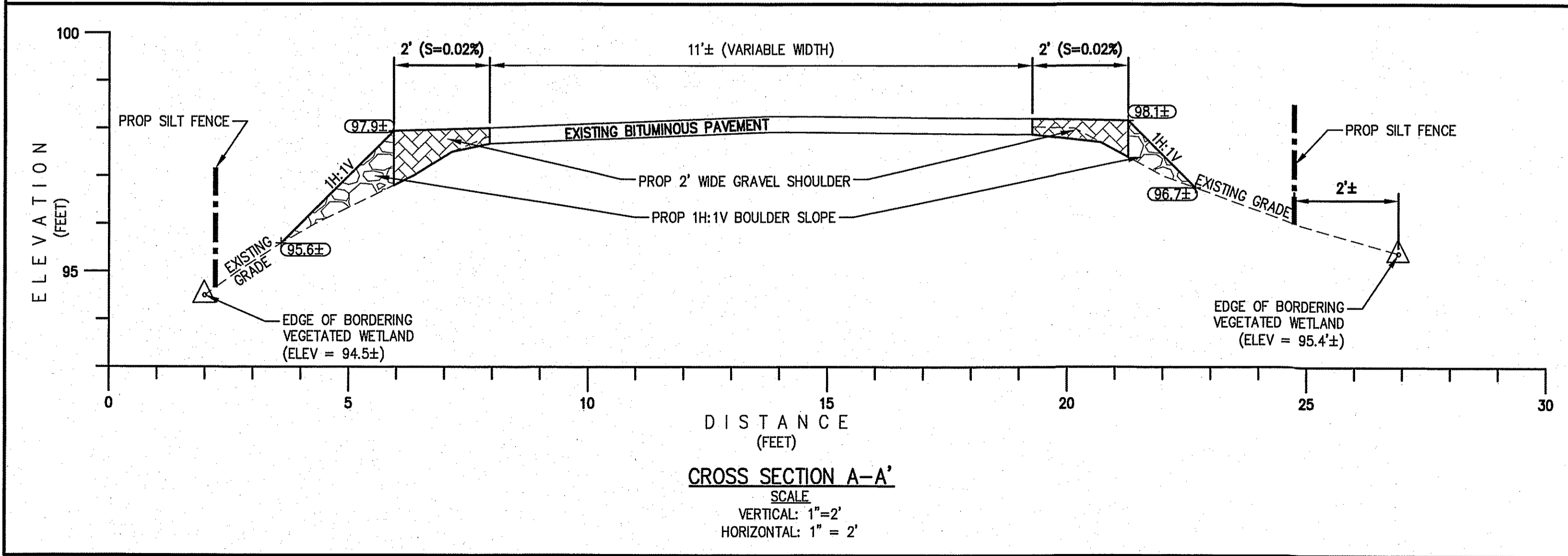
The
Morin-Cameron
GROUP, INC.
 CIVIL ENGINEERS | ENVIRONMENTAL CONSULTANTS
 LAND SURVEYORS | LAND USE PLANNERS
 47 BOSTON STREET - U.S. ROUTE 1, TOPSFIELD, MASSACHUSETTS 01863
 P: 978-897-8586 F: 978-897-8586 W: WWW.MORINCAMERON.COM



SURVEY BY: P.W./S.R.
 DRAFTED BY: WAS
 CHECKED BY: JMM
 APPROVED BY: JMM
 SCALE: AS NOTED
 DATE: MAY 11, 2015

NO.	REVISIONS	DESCRIPTION	DATE

SITE PLAN OF LAND
30 ARROWHEAD FARM ROAD
 (ASSESSOR'S MAP 37, BLOCK 1, LOT 31)
BOXFORD, MASSACHUSETTS
 PREPARED FOR:
BARRY CARNES



SDP
 DRAWING NO.
2 OF 2