

Plan of Land
In
Boxford, Mass.
Showing

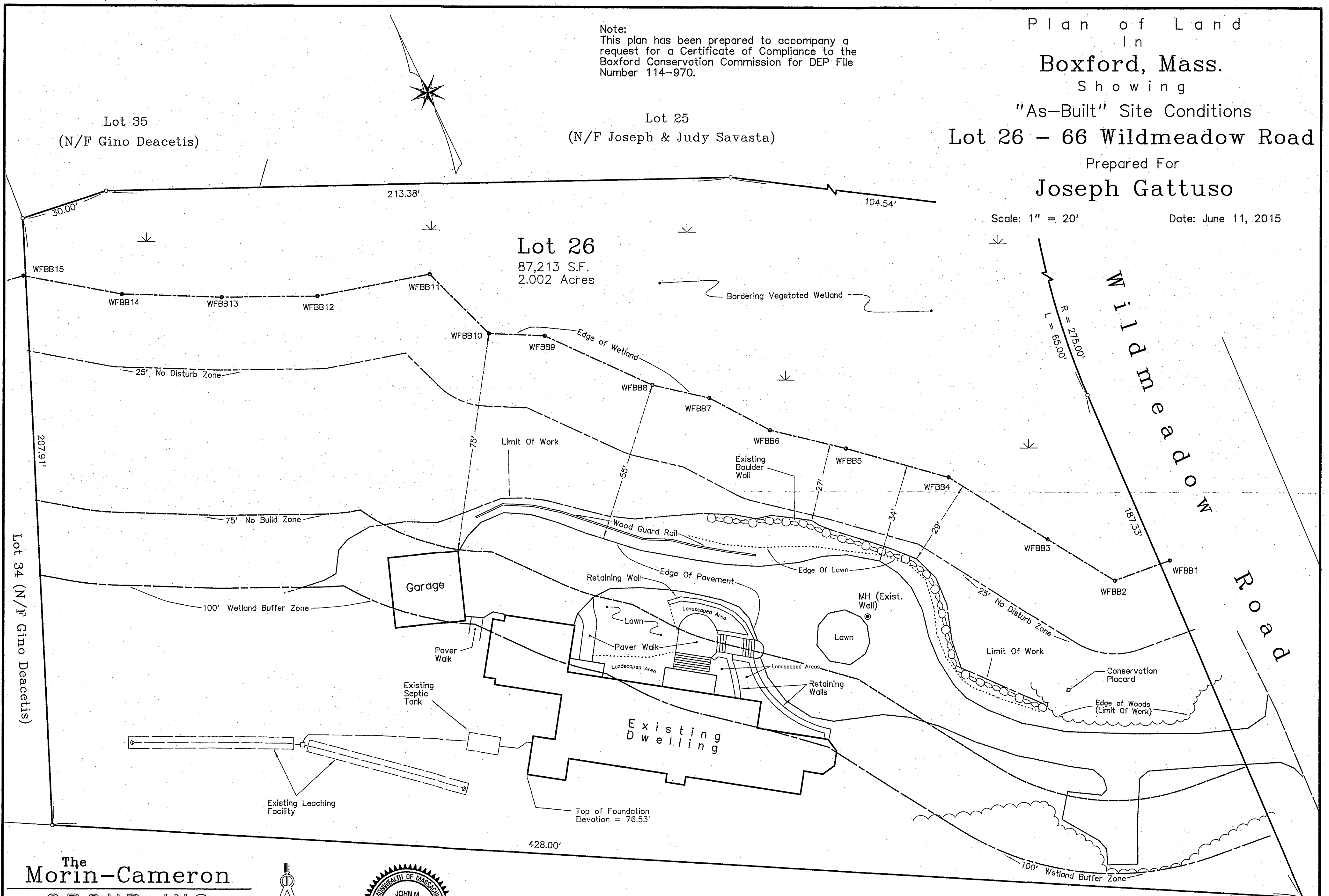
"As-Built" Site Conditions
Lot 26 - 66 Wildmeadow Road

Prepared For
Joseph Gattuso

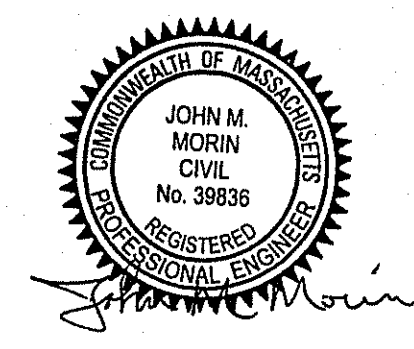
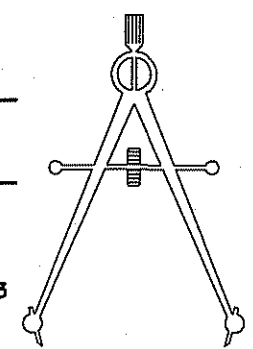
Note:
This plan has been prepared to accompany a
request for a Certificate of Compliance to the
Boxford Conservation Commission for DEP File
Number 114-970.

Scale: 1" = 20'

Date: June 11, 2015



The Morin-Cameron GROUP, INC.
CIVIL ENGINEERS | ENVIRONMENTAL CONSULTANTS
LAND SURVEYORS | LAND USE PLANNERS
447 BOSTON STREET - U.S. ROUTE 1, TOPSFIELD, MASSACHUSETTS 01983
P: 978-887-8586, F: 978-887-3480, W: WWW.MORINCAMERON.COM



Lot 27
(N/F John & Catherine Fisher)