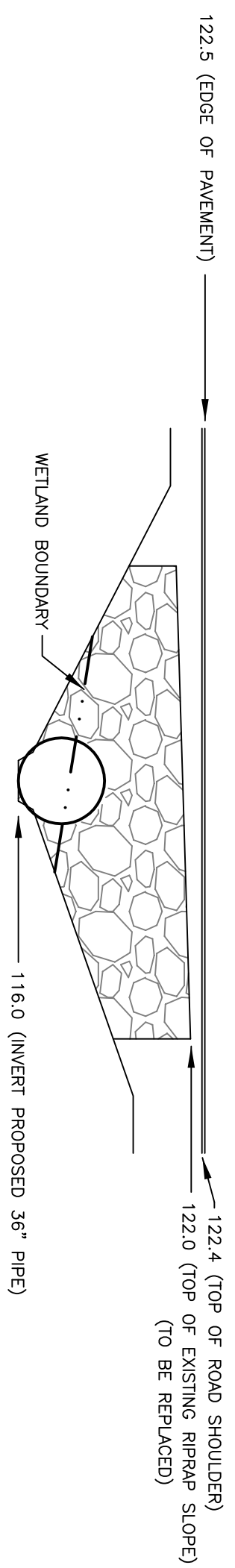
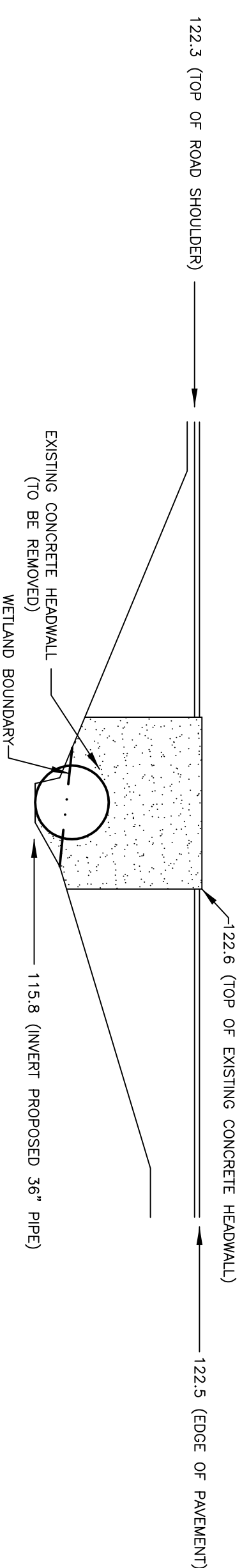


CROSS SECTION OF INLET  
(1"=3')



CROSS SECTION OF OUTLET  
(1"=3')

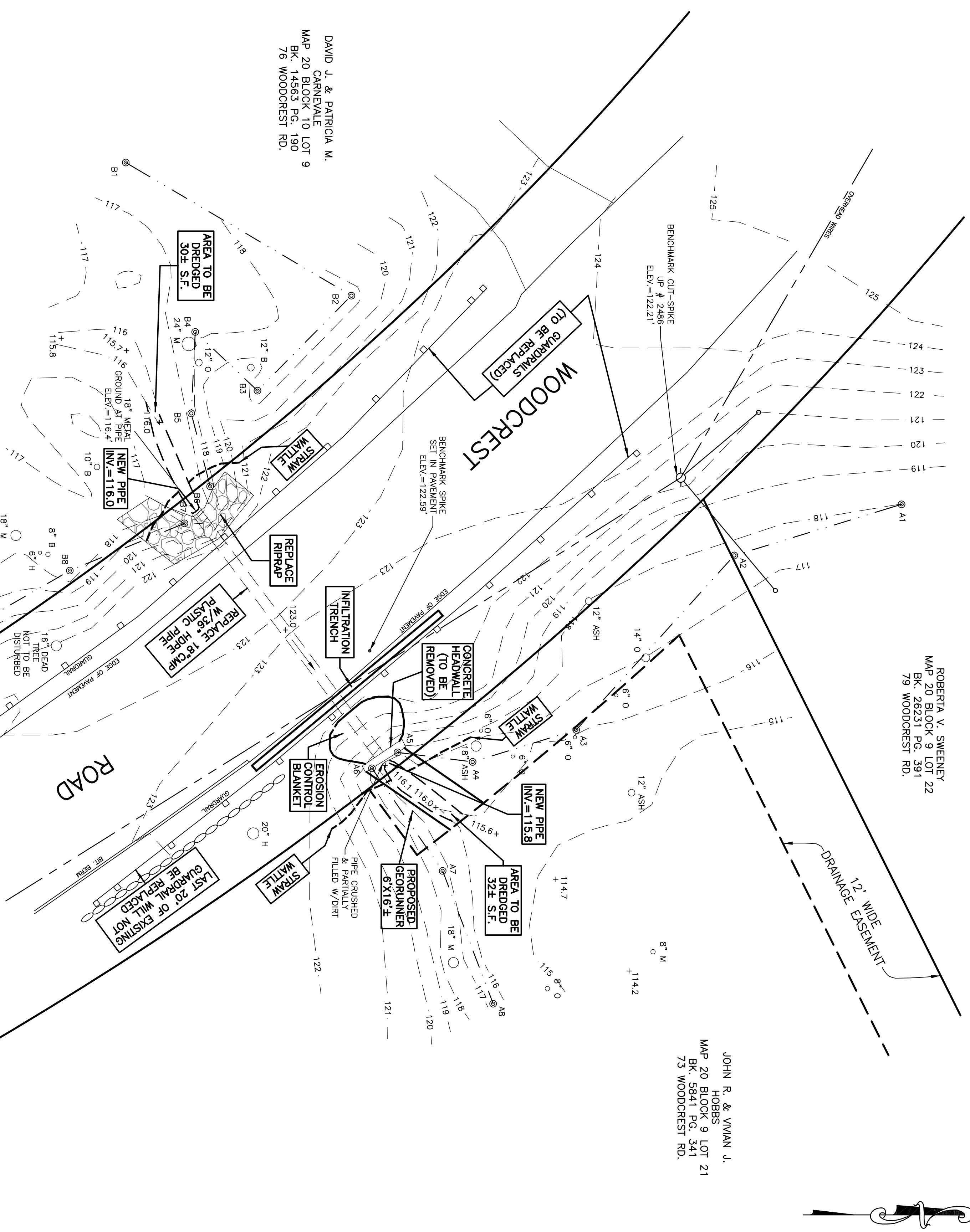
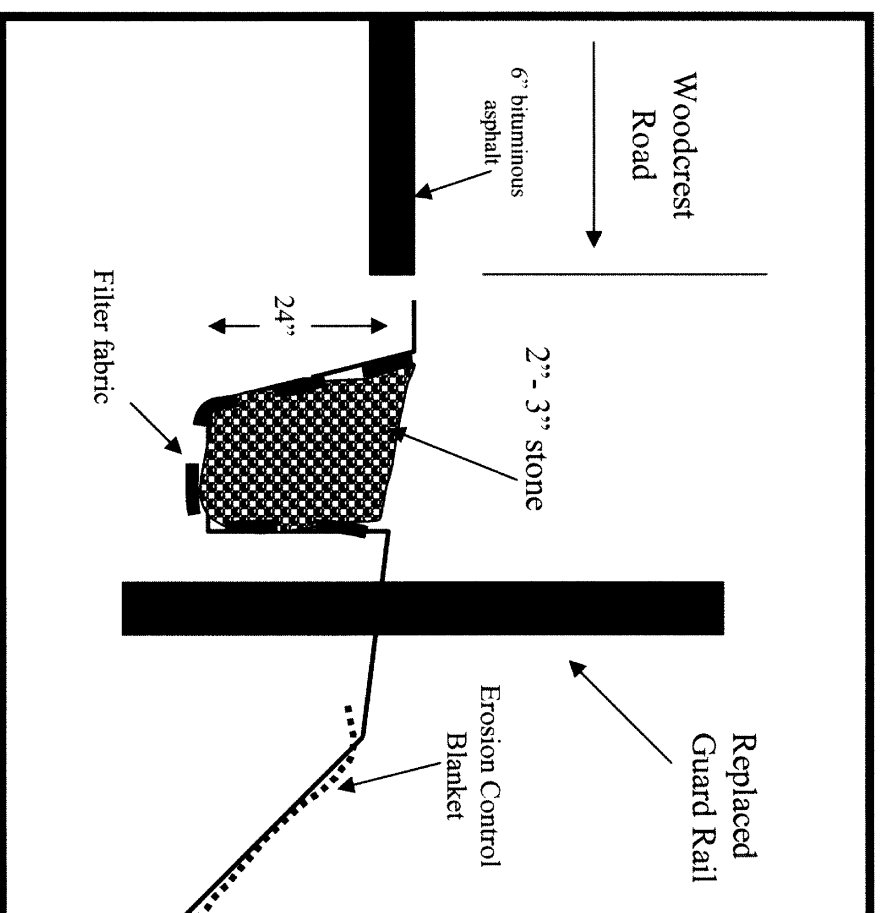


Construction Sequence

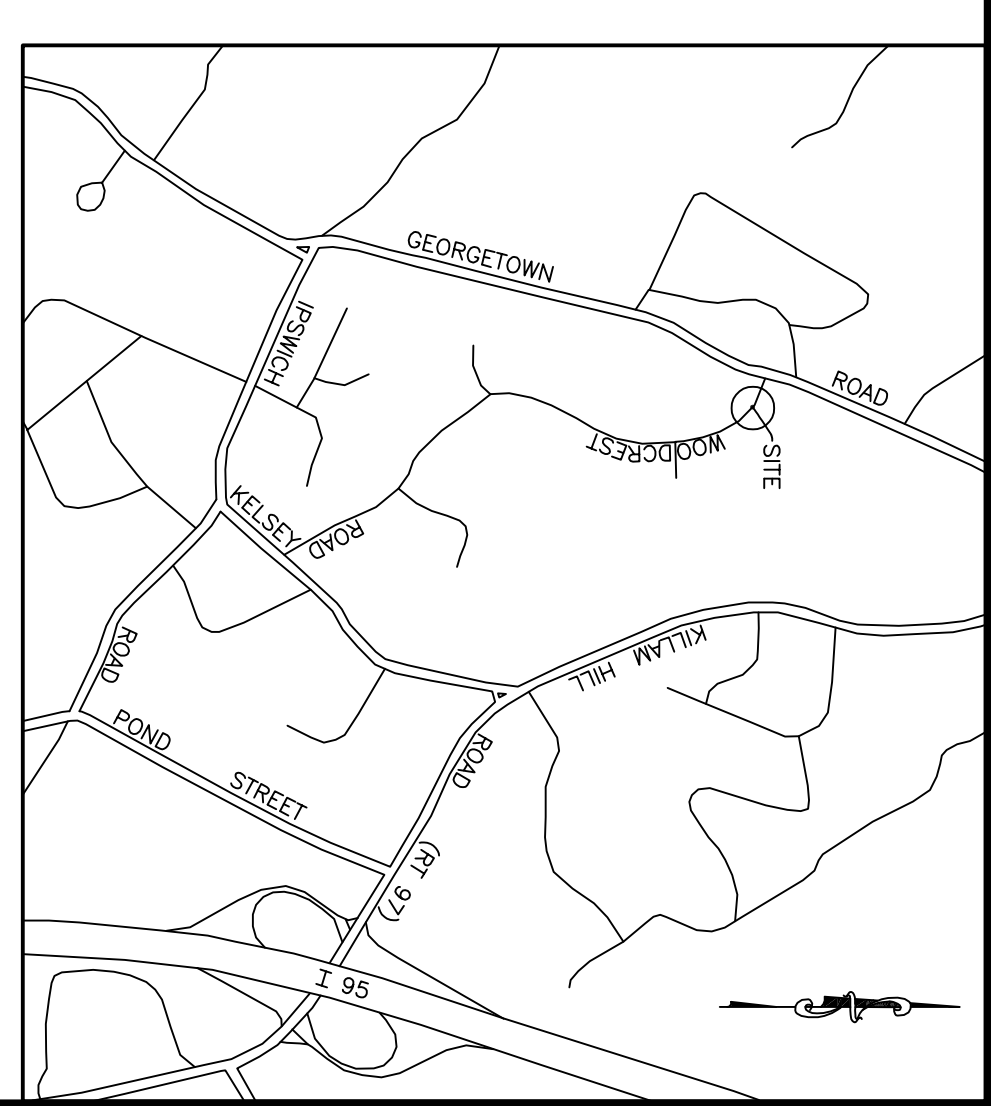
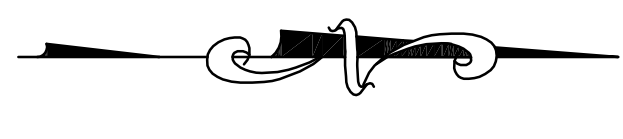
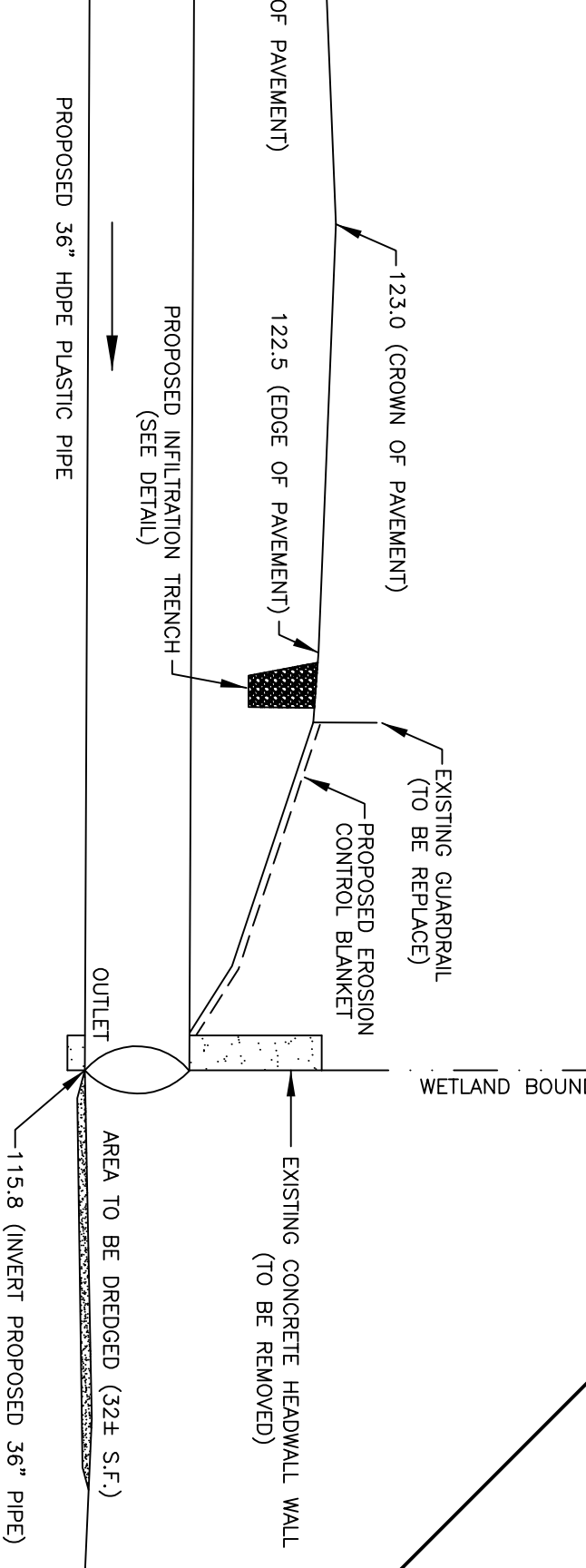
- 1-Work to be conducted during mid to late Summer 2015. The road will be blocked off and traffic detoured during construction. Construction to take 2 to 4 days. The road will remain blocked to traffic during this effort.
- 2-Cut and remove existing guard rail and any woody vegetation within the project area. Do not cut large dead tree on inlet side of road.
- 3-Install erosion control (straw wattle) around the inlet and outlet of the culvert.
- 4-Knock down and remove concrete headwall on the outlet side of road.
- 5-Cut asphalt across section of road where culvert is to be replaced.
- 6-Remove cut asphalt and excavate road base material to expose and remove culvert. Soil to be temporarily stockpiled along edge of trench.
- 7-Dredge and remove accumulated sediment from wetland along both sides of the road.
- 8-Install new 36" HDPE culvert and backfill.
- 9-Replace stone riprap on inlet side of culvert.
- 10-Install 6" x 16' geotexture below outlet, spread loam over geotexture to fill gaps and seed with wetland seed mix.
- 11-Spread 6" of loam along outlet side of road, seed with Conservation seed mix and cover with erosion control blanket.
- 12-Construct infiltration trench on outlet side of road (see detail on plan).
- 13-Install guard rail along both sides of road.
- 14-Repair disturb section of road.
- 15-When road slopes are stable, remove straw wattles.

End Construction Sequence

Infiltration Trench Detail  
(not to scale)



CROSS SECTION OF STREET  
(1"=5')



LOCUS MAP  
SCALE: 1" = 1400'

REFERENCES:

- PLANS - PL. BK. 90 PL. 87
- WETLAND FLAGS: ROBERT PROKOP (DEC. 2014)
- VERTICAL DATUM: N.A.V.D. 1988

TREE ABBREVIATIONS

- A APPLE
- T TREE
- H HEMLOCK
- M MAPLE
- P PINE
- O OAK
- B BIRCH

LEGEND

- BIT. BITUMINOUS
- ELEV. ELEVATION
- INV. INVERT

SITE PLAN  
IN

BOXFORD, MA

PREPARED FOR  
**TOWN OF BOXFORD**  
REV. 4/29/15, 6/8/15  
MARCH 6, 2015  
**DONHOE SURVEY, INC.**  
363 BOSTON ST.  
TOPSFIELD, MA  
(978) 887-6161



NOTE:  
• UNDERGROUND UTILITIES WERE NOT MARKED AT THE TIME OF THIS SURVEY. AN INVESTIGATION OF UNDERGROUND UTILITIES HAS NOT BEEN CONDUCTED BY DONHOE SURVEY, INC.