

GEORUNNER® SURFACE FLOW PROTECTION

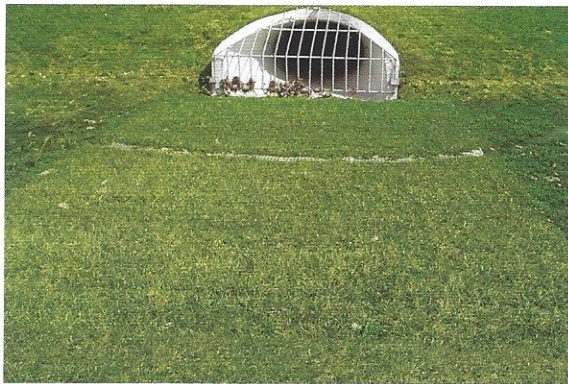


SOIL STABILIZATION

GEORUNNER® Flow Protection Mats are a low-cost solution for protecting embankments from scour and the erosive effects caused by water flow.

■ PROTECTS HIGH IMPACT AREAS

The series of lightweight, durable mats protects surfaces from intermittent and concentrated surface flows, water fluctuations and light wave action. They offer resistance to shear stresses and protect more efficiently than typical vegetation or rip-rap systems.



GEORUNNER® Key Applications

- Culvert Outfalls
- Stormwater Channels
- Containment Ponds
- Swales & Drainage Ditches
- Shoreline Embankments
- Spillways, Down Chutes & Drop Structures
- Parking Lot Point Discharges



■ GEORUNNER® ADVANTAGES

- Effective in areas where erosion control blankets and turf reinforcement mats alone are not sufficient.
- Open mesh design promotes dense grass growth, increases system stability, reduces visibility and blends naturally with its environment.
- Mats are fully secured unit-to-unit, creating a fully integrated, flush surface, versus shingling found in other products.
- Anchored with industry-standard components to resist pull-out caused from saturated soils. A pneumatic driver allows quick driving of anchors, reduces worker fatigue.
- When anchored, the flexible system allows full contact with ground over landscape contours.
- Fully anchored system can be driven on by mowing or other lawn maintenance equipment.

